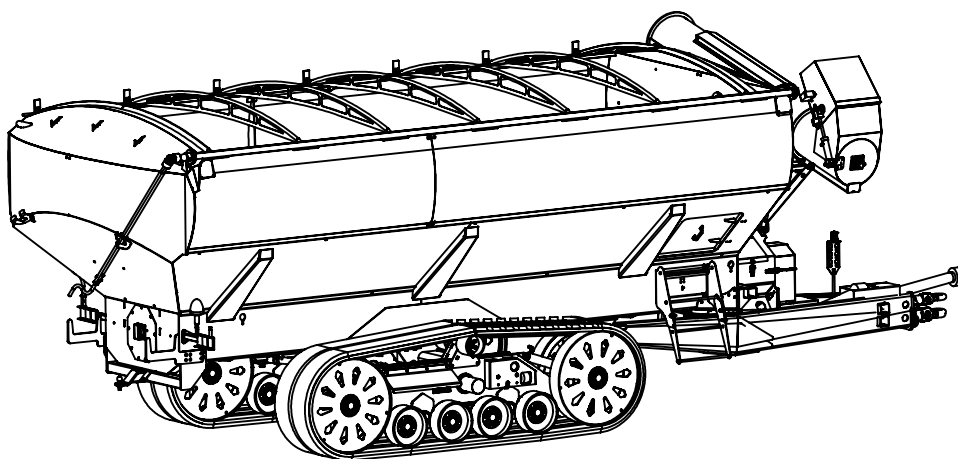
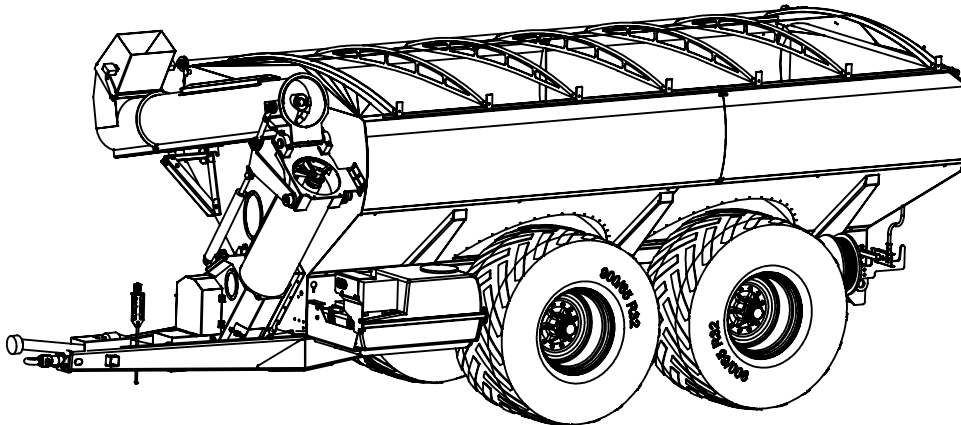
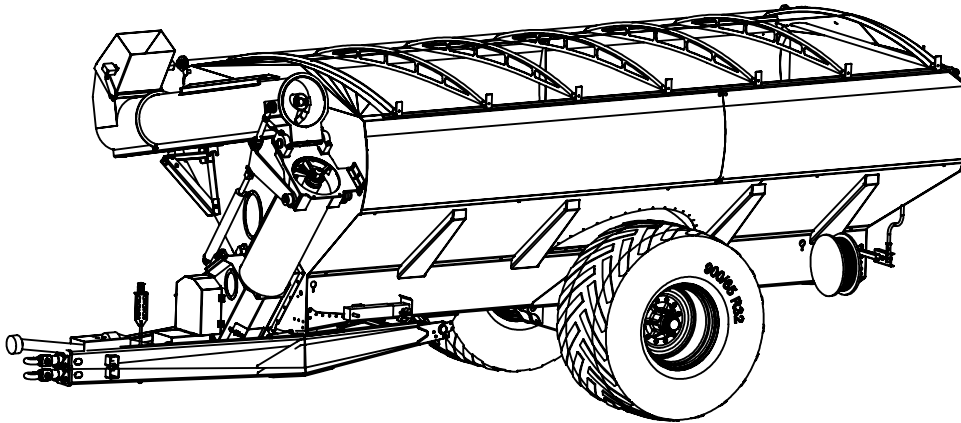


DAVIMAC CHASER BIN PARTS LIST

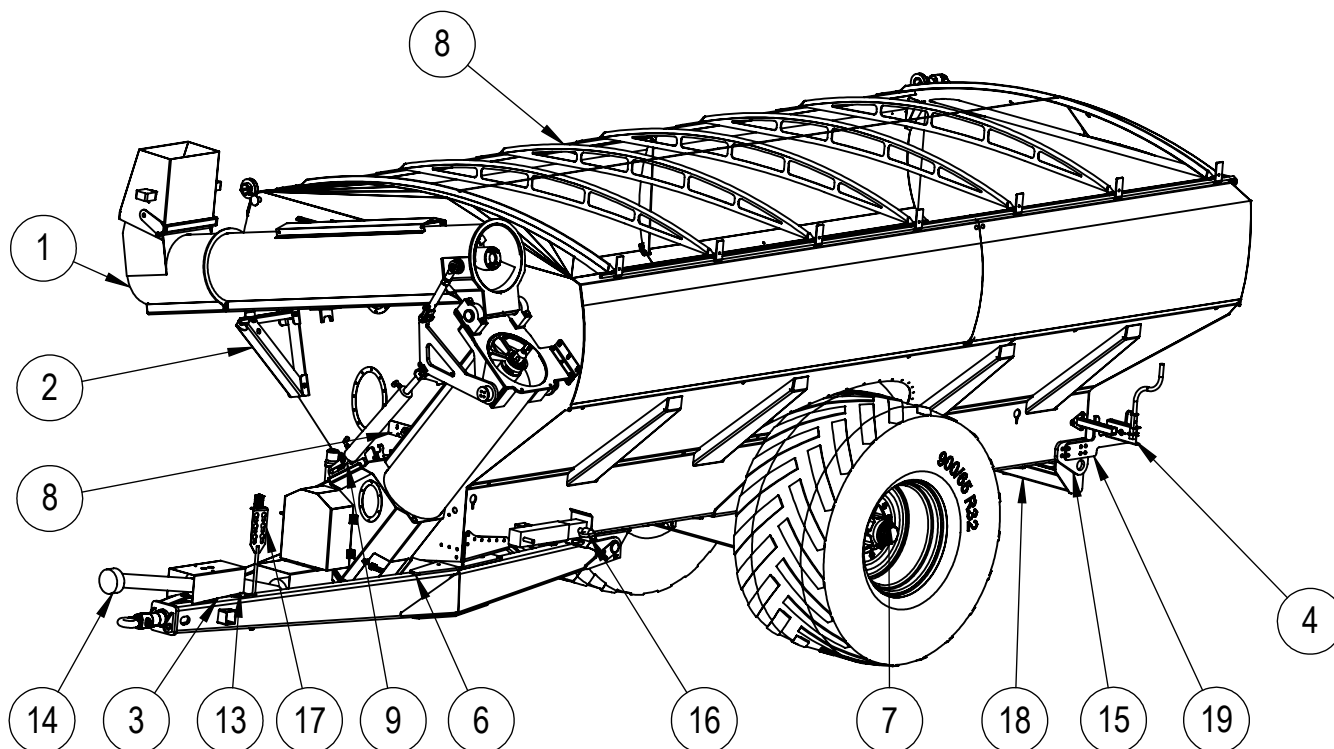


FROM : CB16718 TO CB17418

DAVIMAC
MANUFACTURING

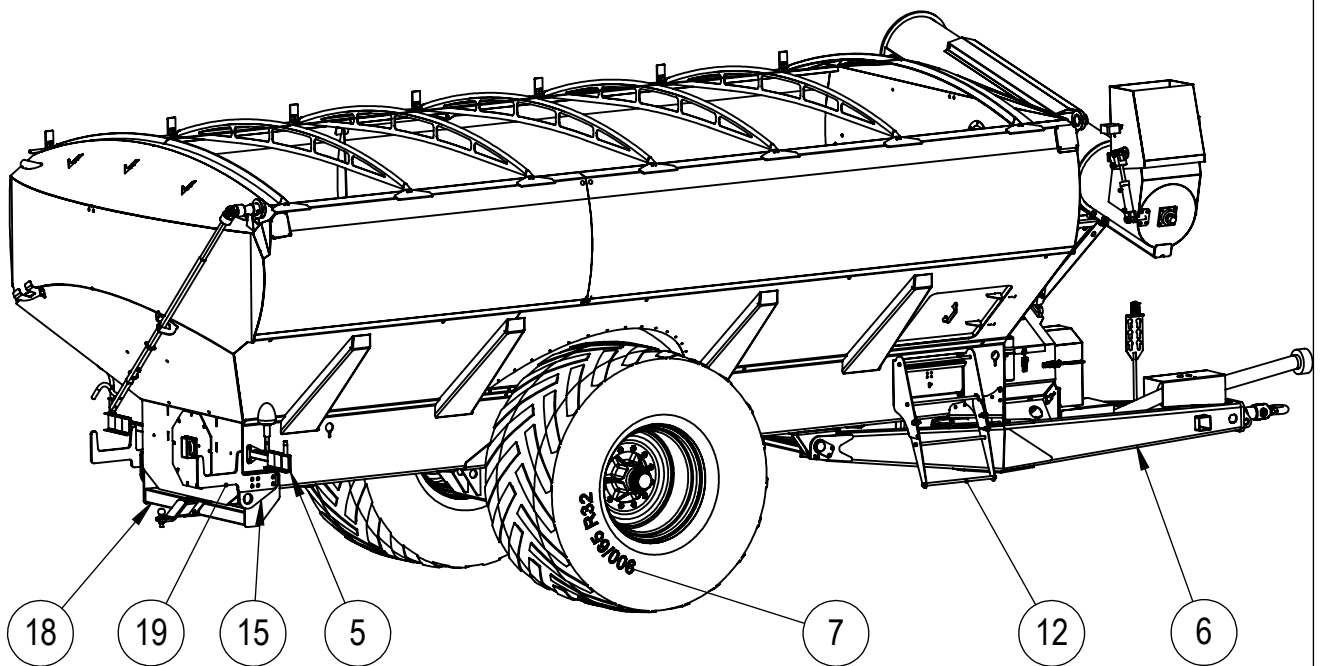
DAVIMAC PTY LTD
55 WELINGTON STREET
MOLONG NSW

CHASER BIN - RIGHT



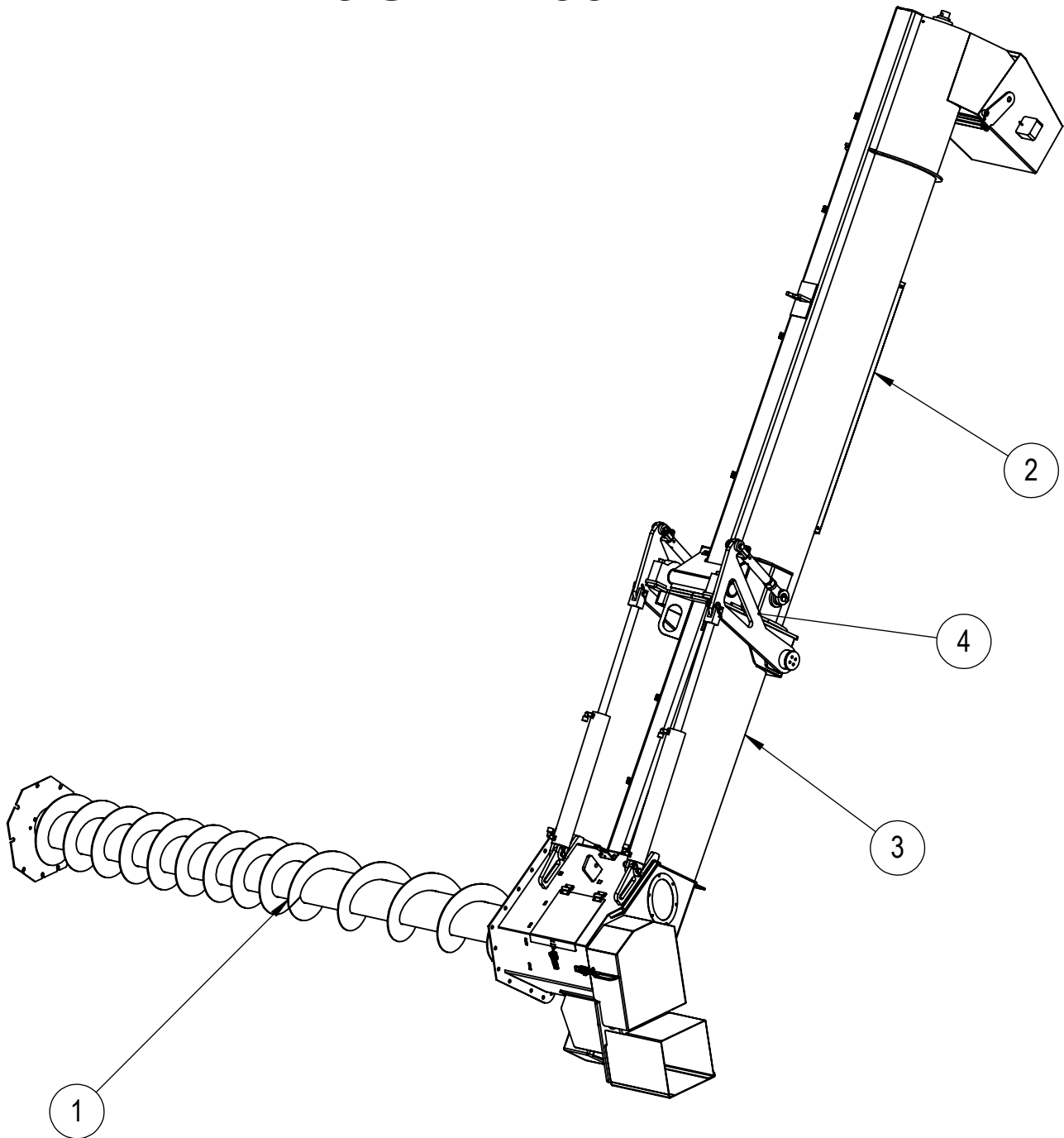
ITEM NO.	PART NUMBER	DESCRIPTION	QTY	PAGE
1	3131003	AUGER ASSEMBLY	1	4-13
2	3107040	STANDARD AUGER SUPPORT	1	14
3	0207306 0207307	PTO CONNECTOR HYDRAULIC DRIVE	1	15
4	0219002	TAIL LIGHT ASSEMBLY LH	1	16
5	0219005	TAIL LIGHT ASSEMBLY RH	1	16
6	680-2027 680-2028	18 AND 25 TON HITCH 30 AND 35 TON HITCH	1	17-18
7	3104006	AXLE	1	19-23
8	3105030	BIN ASSEMBLY	1	24-25
9	3131018	HYDRAULIC HOSES	1	26-31
10	3119001	BIN WIRING DIAGRAM	1	39-44
11	202-0099	PLASTIC DOCK HOLDER	1	-
12	680-2108	ACCESS STEPS CHASEER BIN	1	-
13	680-4170	REAR PTO SHAFT	1	-
14	680-4171	FRONT PTO SHAFT	1	-
15	0202029-09	REAR TOW LUG	2	-
16	0217001	CHASER BIN JACK	1	-
17	0220055	POGO STICK BOLTED ASSEMBLY	1	-
18	3103001	LIGHT DUTY REAR TOW BARE	1	-
19	3105030-06	REAR CHAIN BRACKET	2	-

CHASER BIN - LEFT



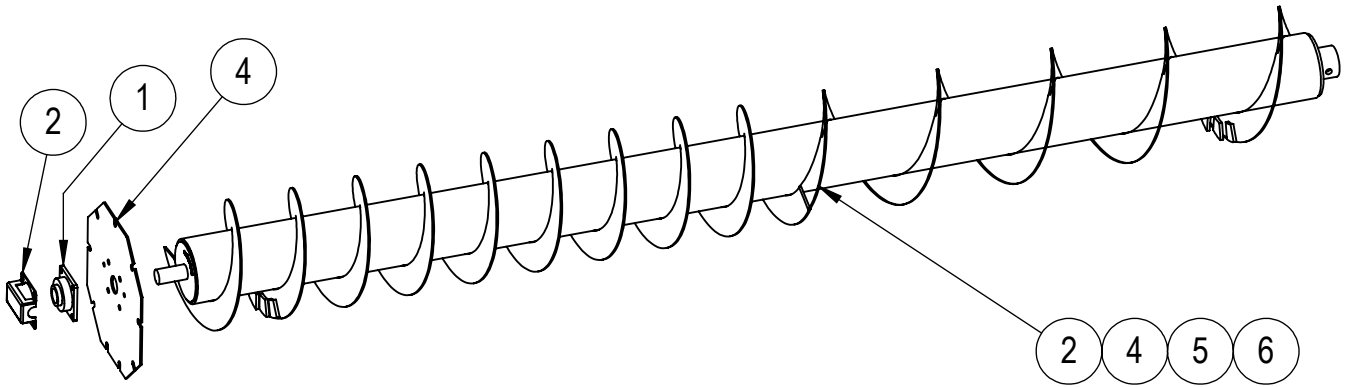
ITEM NO.	PART NUMBER	DESCRIPTION	QTY	PAGE
1	3131003	AUGER ASSEMBLY	1	4-13
2	3107040	STANDARD AUGER SUPPORT	1	14
3	0207306 0207307	PTO CONNECTOR HYDRAULIC DRIVE	1	15
4	0219002	TAIL LIGHT ASSEMBLY LH	1	16
5	0219005	TAIL LIGHT ASSEMBLY RH	1	16
6	680-2027 680-2028	18 AND 25 TON HITCH 30 AND 35 TON HITCH	1	17-18
7	3104006	AXLE	1	19-23
8	3105030	BIN ASSEMBLY	1	24-25
9	3131018	HYDRAULIC HOSES	1	26-31
10	3119001	BIN WIRING DIAGRAM	1	39-44
11	202-0099	PLASTIC DOCK HOLDER	1	-
12	680-2108	ACCESS STEPS CHASEER BIN	1	-
13	680-4170	REAR PTO SHAFT	1	-
14	680-4171	FRONT PTO SHAFT	1	-
15	0202029-09	REAR TOW LUG	2	-
16	0217001	CHASER BIN JACK	1	-
17	0220055	POGO STICK BOLTED ASSEMBLY	1	-
18	3103001	LIGHT DUTY REAR TOW BARE	1	-
19	3105030-06	REAR CHAIN BRACKET	2	-

AUGER ASSEMBLY



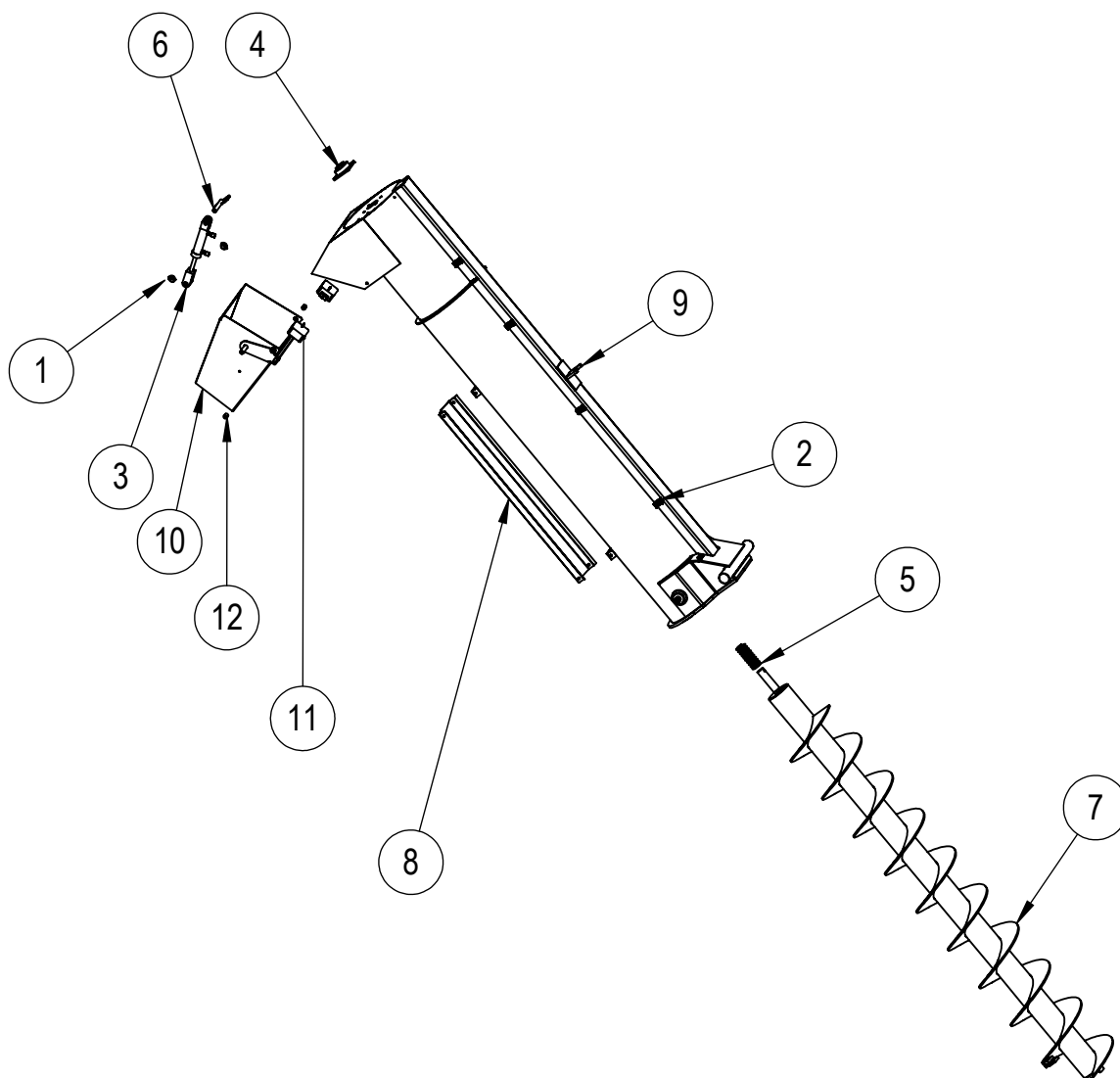
ITEM NO.	PART NUMBER	DESCRIPTION	QTY	PAGE
1	3131004	CROSS AUGER	1	5
2	3131005	UPPER VERTICAL AUGER ASSEMBLY	1	6
3	3131006	LOWER AUGER AND ATTACHMENTS	1	7-8
4	3131022	CHASER BIN AUGER LINKAGE	1	9

CROSS AUGER



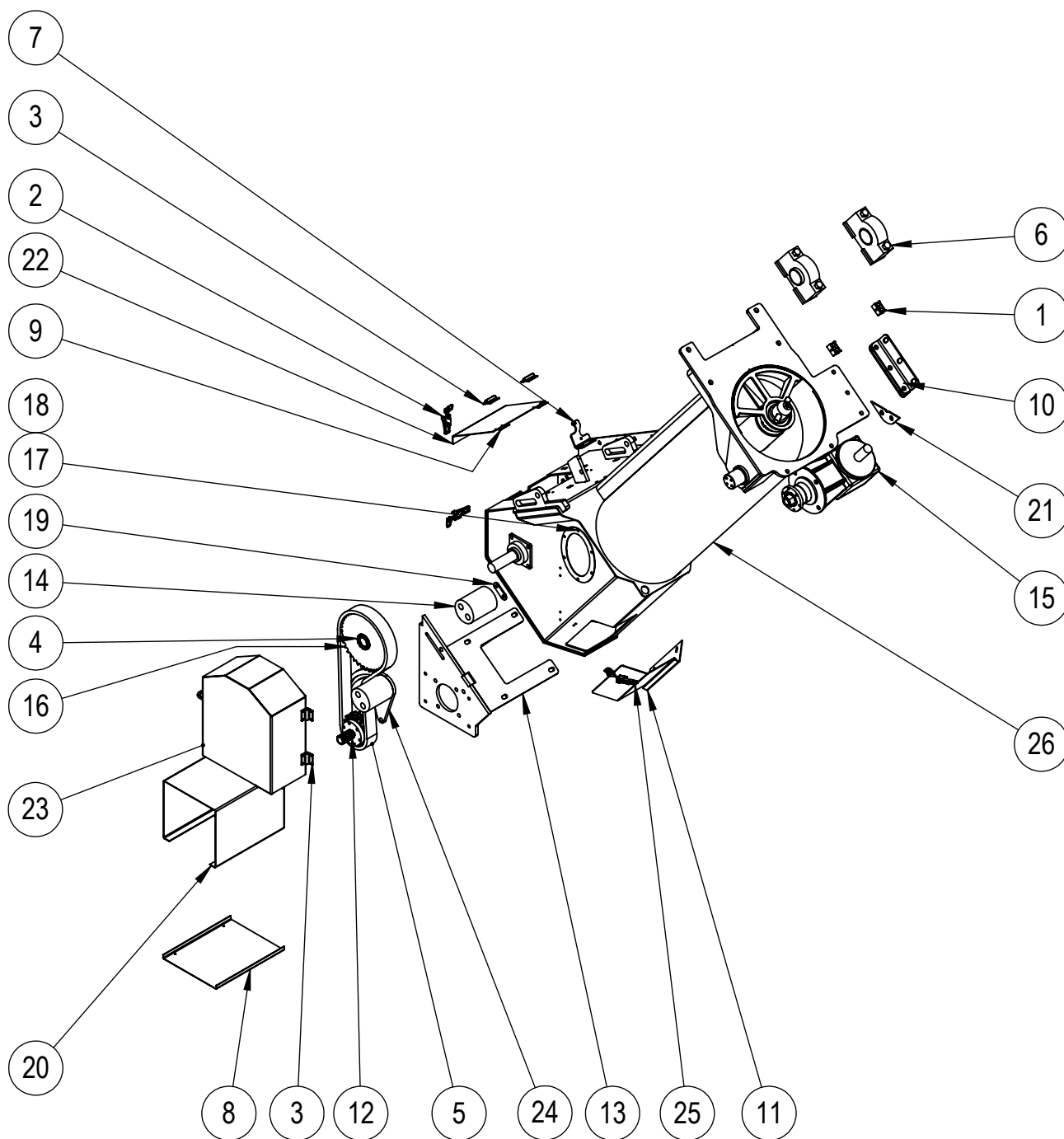
ITEM NO.	PART NUMBER	DESCRIPTION	QTY.	PAGE
1	456-2010	FLANGE BEARING UCF210	1	-
2	0207020-05	SHAFT PROTECTION COVER	1	-
3	0207308	30 TON CROSS AUGER ASSEMBLY	1	-
4	0207308-04	AUGER END PLATE	1	-
5	0207310	25 TON CROSS AUGER ASSEMBLY	1	-
5	0207311	18 TON CROSS AUGER ASSEMBLY	1	-
7	0207312	35 TON CROSS AUGER ASSEMBLY	1	-

UPPER VERTICAL AUGER ASSEMBLY



ITEM NO.	PART NUMBER	DESCRIPTION	QTY	PAGE
1	140-0037	LYNCH PIN 6MM 32MM	2	-
2	154-4303	PIPE CLAMP	4	-
3	202-0119	UPPER AUGER CYLINDER	1	-
4	456-2010	FLANGE BEARING UCF210	1	-
5	680-4151	UPPER AUGER SPRING	1	-
6	0207030	SPOUT CYLINDER LUG	1	-
7	0207222	UPPER VERTICAL AUGER	1	-
8	0207300-04	AUGER GUARD	1	-
9	0207317	UPPER VERTICAL AUGER BODY	1	-
10	0207318	SPOUT WELDED ASSEMBLY	1	-
11	0219001	48W 300 LUM3NS 16 LED FLOOD WORK LIGHT	2	-
12	0220006-02	SPACER	2	-

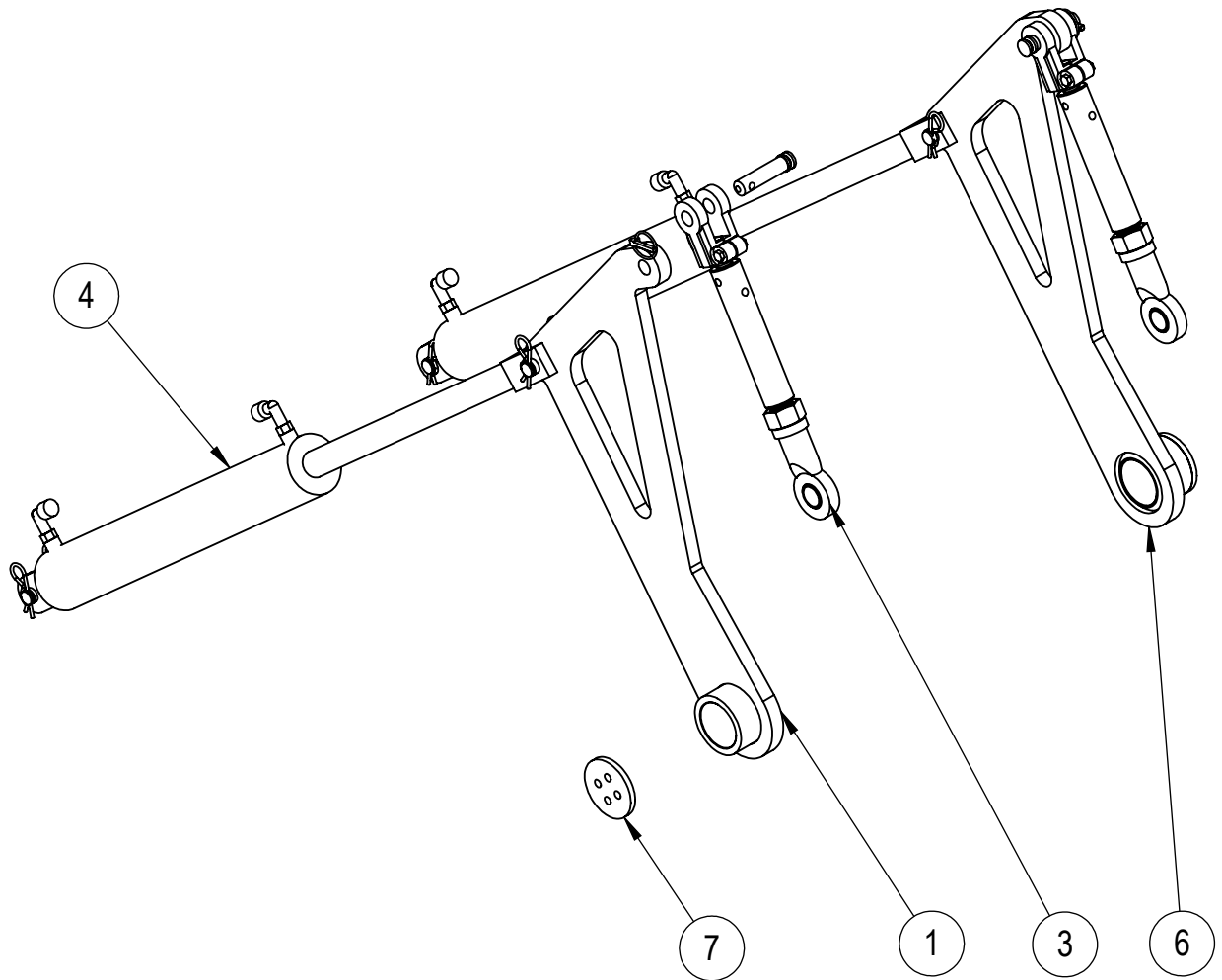
LOWER AUGER AND ATTACHMENTS



MATERIAL LIST FOR LOWER AUGER AND ATTACHMENTS

ITEM NO.	PART NUMBER	DESCRIPTION	QTY	PAGE
1	154-4303	PIPE CLAMP	2	-
2	202-0029	LARGE LATCH SH 28	2	-
3	202-0087	HINGE – BUTT	4	-
4	202-0098	LOCKING ASSEMBLY Z6-50X80	1	-
5	202-0142	CHAIN 16B-2, DUPLEX	1	-
6	680-2121	PILLOW BLOCK	2	-
7	0207020-02	HYDRAULIC REGULATOR MOUNTING BRACKET	1	-
8	0207020-04	CHAIN PROTECTION COVER LID	1	-
9	0207020-10	HINGE SPACER	2	-
10	0207021-09	MOUNTING PLATE	2	-
11	0207021-13	DOOR MOUNTING PLATE	1	-
12	0207024	DRIVE SPROCKET ASSEMBLY	1	-
13	0207025	GEARBOX MOUNTING WELDED ASSEMBLY	1	-
14	0207034-01	NYLON RH DISCHARGE	1	-
15	0207077	GEARBOX	1	10
16	0207087	TOP VERTICAL DRIVE SPROCKET	1	-
17	0207136	WINDOW PERSPEX 6MM THICK (AUGER)	1	-
18	0207200-05	WINDOW HOLDING RING	2	-
19	0207200-07	RH DISCHARGE CHAIN TENSIONER BACK PLATE	1	-
20	0207300-01	CHAIN PROTECTION COVER	1	-
21	0207300-02	REAR AUGER COVER PLATE	1	-
22	0207300-03	INSPECTION HATCH	1	-
23	0207304	UPPER CHAIN COVER	1	-
24	0207305	LH DISCHARGE CHAIN TENSIONER ASSEMBLY	1	10
25	0207309	INSPECTION DOOR ASSEMBLY	1	-
26	0207402	LOWER VERTICAL AUGER ASSEMBLY	1	11

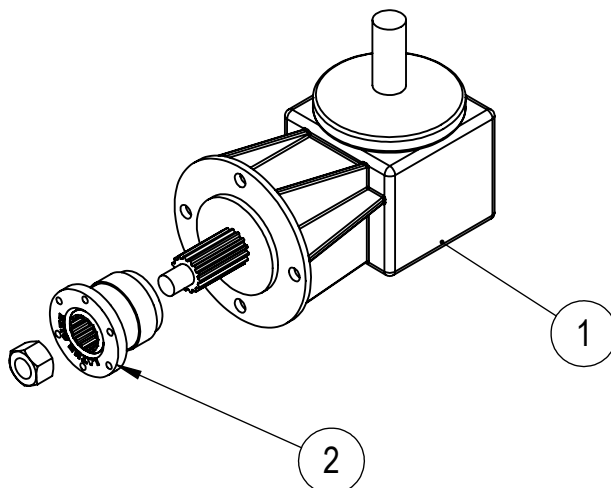
HYDRAULIC CYLINDER 24"



FOR SERIAL NUMBERS CB 14717 TO CB14917, CB15417, CB15517 AND CB15717AND LATER

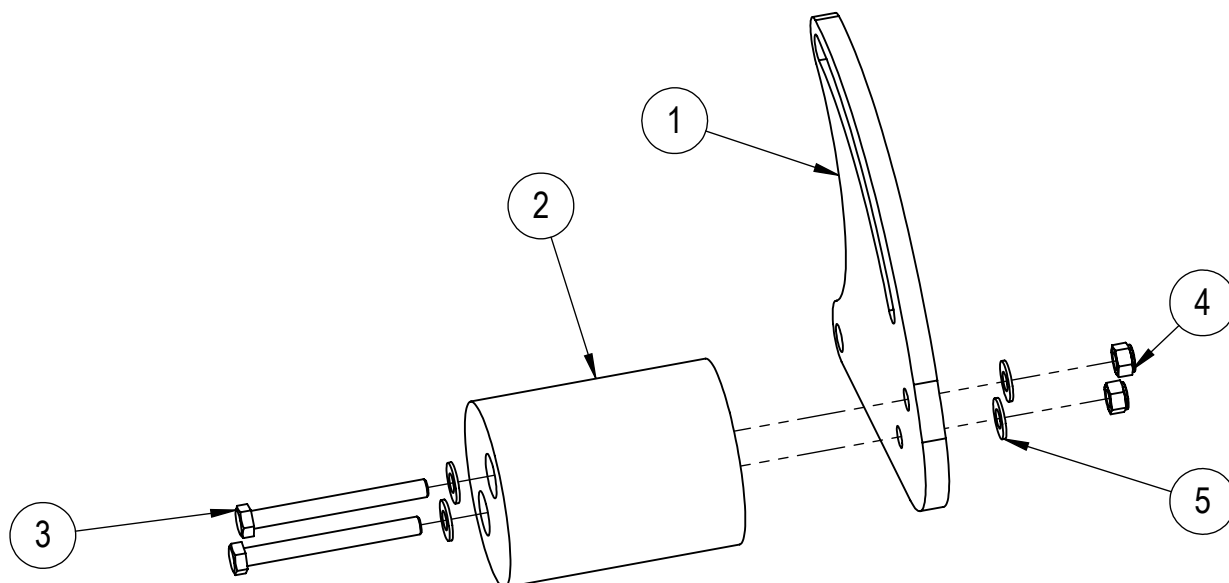
ITEM NO.	PART NUMBER	DESCRIPTION	QTY	PAGE
1	0207414	AUGER LEVER	1	
2	140-4039	PIN CLEVIS 1" 76mm CAT2	2	
3	0207315	AUGER ADJUSTABLE LINKAGE	2	12
4	202-0102	HYDRAULIC CYLINDER 2.5"BORE X 24" STROKE	2	
5	140-0039	LINCH PIN 11mm 32mm	2	
6	0207415	AUGER LEVER	1	
7	0207300-06	HOLDING PLATE	2	

GEARBOX



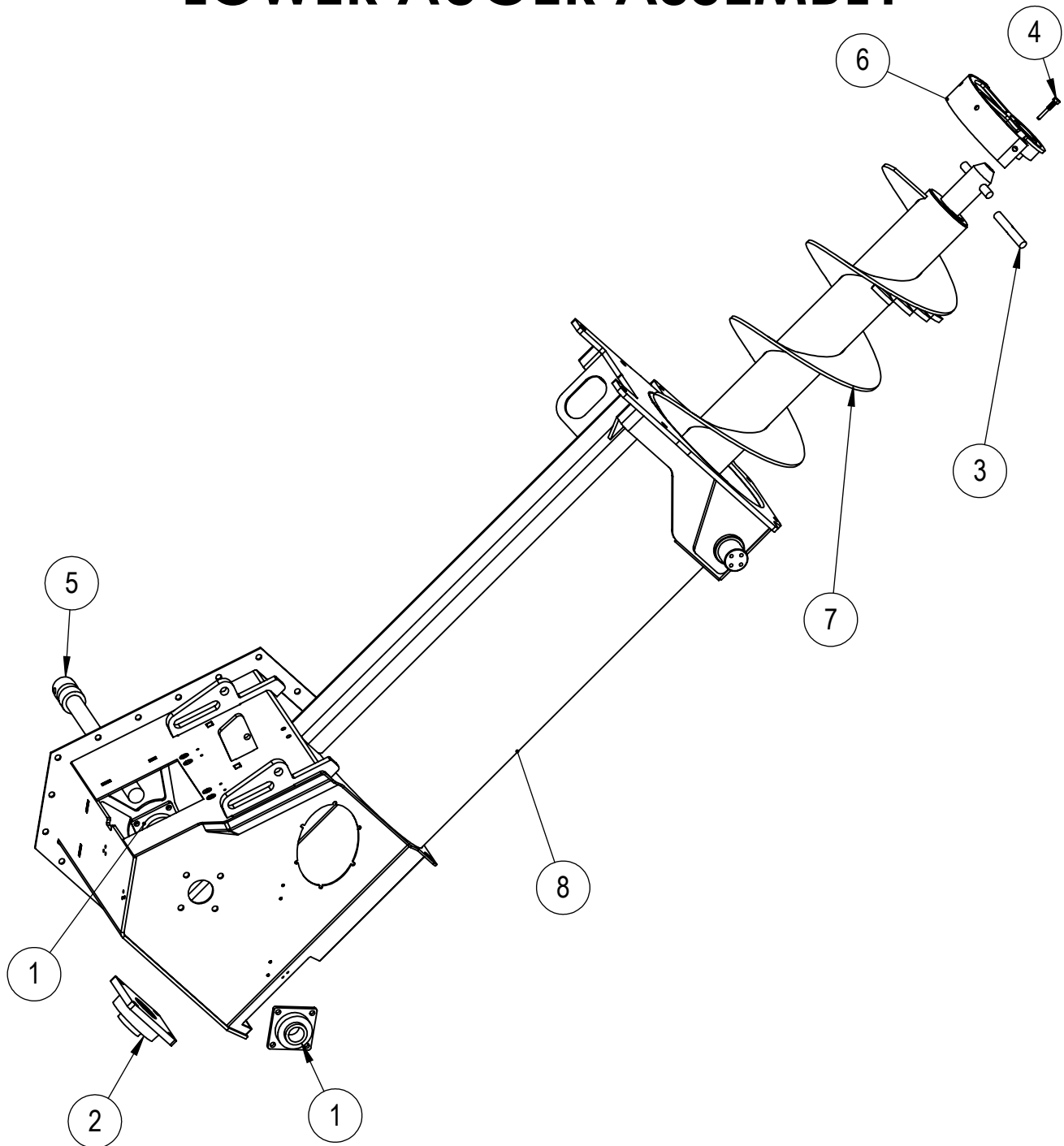
ITEM NO.	PART NUMBER	DESCRIPTION	QTY	PAGE
1	680-4130	100HP GEAR BOX ONLY NO HUB	1	-
2	0207313	GEARBOX DRIVE SLEEVE ASSEMBLY	1	-
3	680-4128	NUT	1	-

CHAIN TENSIONER ASSEMBLY



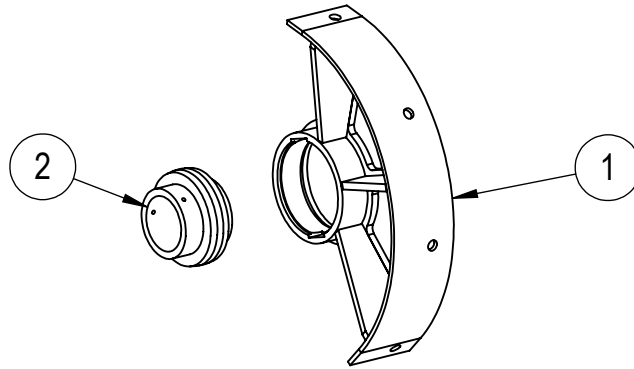
ITEM NO.	DESCRIPTION	QTY	PART NUMBER	PAGE
1	DRIVE CHAIN TENSIONER PLATE	1	0207305-01	-
2	NYLON	1	0207034-01	-
3	M12 x 120 HEX BOLT ZINC GR8.8	2	133-4116	-
4	M12 HEX NYLOCK NUT ZINC PLATED GR 8.8	2	134-4016	-
5	WASHER FLAT M12	4	135-3012	-

LOWER AUGER ASSEMBLY



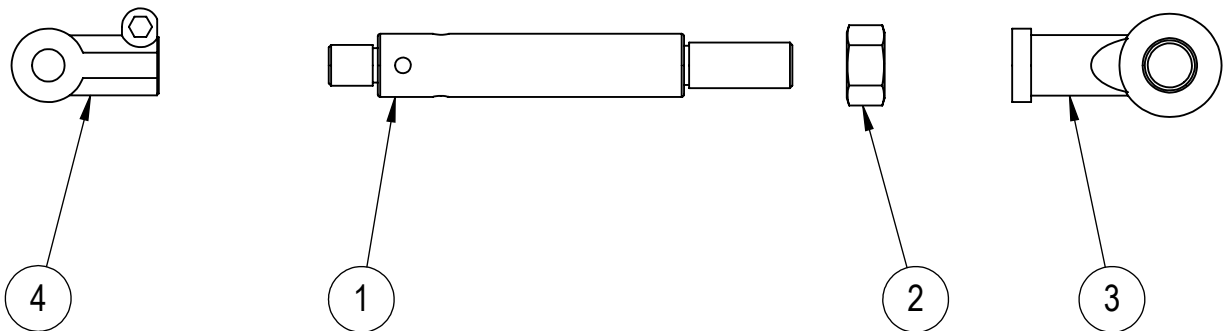
ITEM NO.	PART NUMBER	DESCRIPTION	QTY	PAGE
1	456-2010	FLANGE BEARING UCF210	2	
2	680-2035	FLANGE BEARING UCF 313	1	
3	0207026-06	DRIVE PIN	1	
4	0207090	LOCATING PIN	1	
5	0207095	AUGER DRIVE SHAFT	1	
6	0207135	AUGER CENTRALISING DEVICE	1	
7	0207206	LOWER VERTICAL AUGER	1	
8	0207303 0207403	LOWER VERTICAL AUGER BODY	1	

AUGER CENTRALISING DEVICE



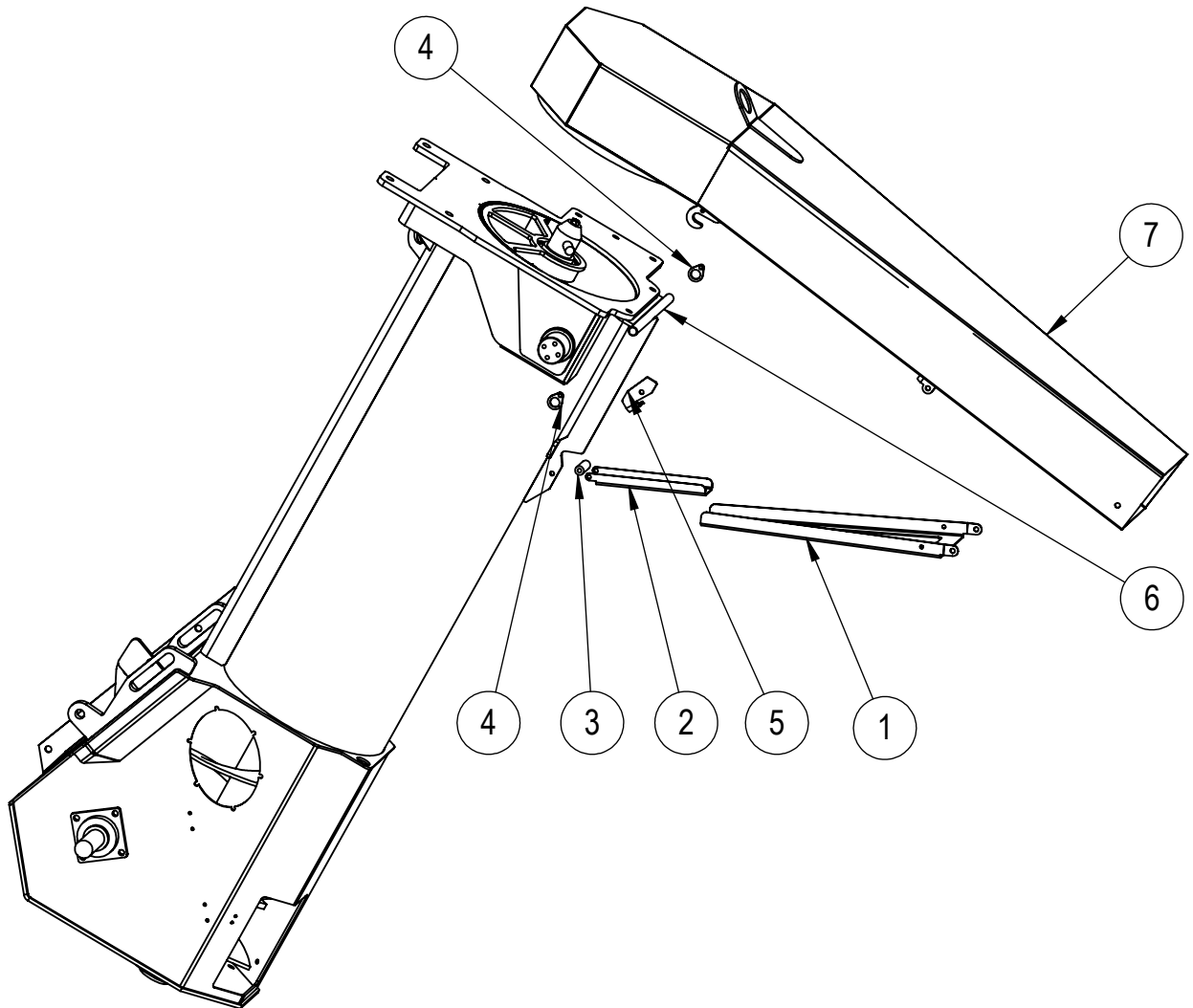
ITEM NO.	PART NUMBER	DESCRIPTION	QTY	PAGE
1	0207320	CENTRALISING DEVICE WELDED ASSEMBLY	1	-
2	202-0044	BEARING UC215	1	-

AUGER ADJUSTABLE LINKAGE



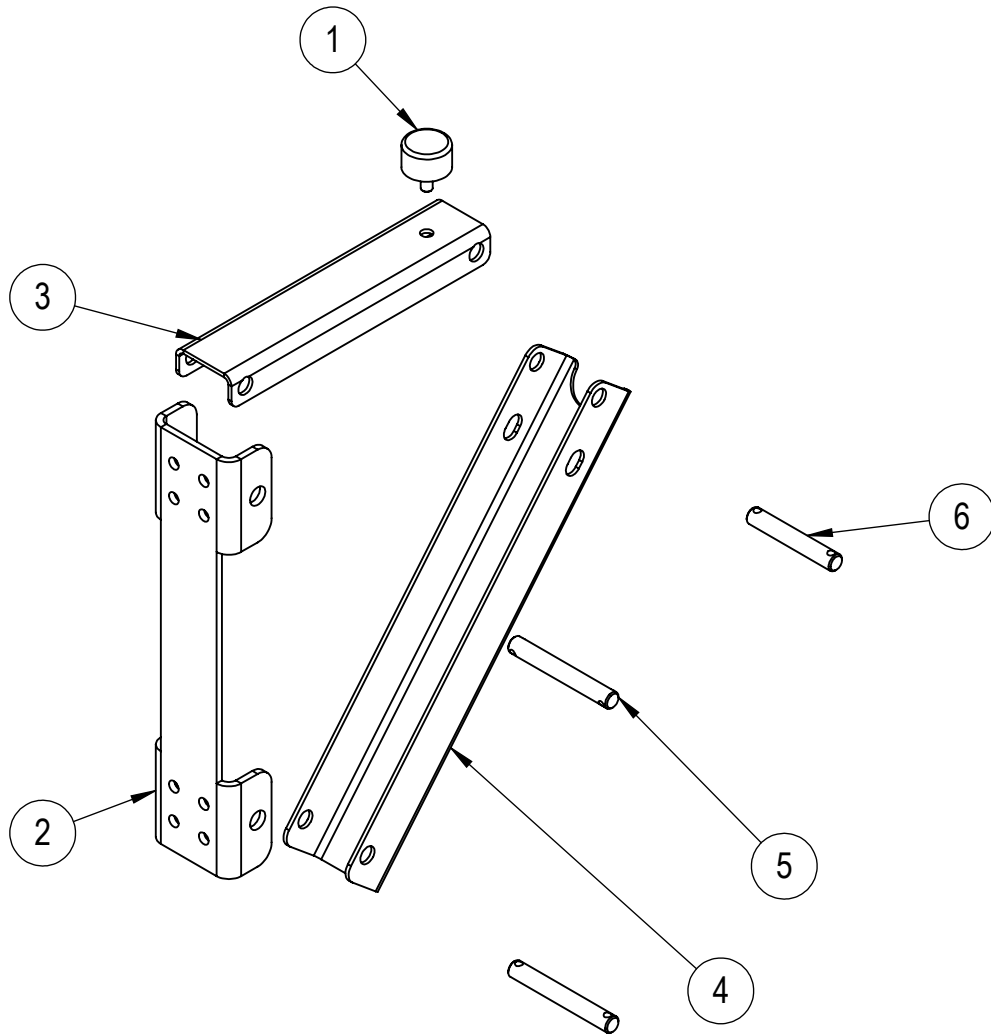
ITEM NO.	PART NUMBER	DESCRIPTION	QTY	PAGE
1	0207315-01	PART FOR ADJUSTABLE LINKAGE	1	-
2	202-0127	M36 LH NUT	1	-
3	202-0082	METRIC FEMALE NARROW RODENDS LH	1	-
4	202-0028	CLEVIS ROD END	1	-

HOPPER SPOUT



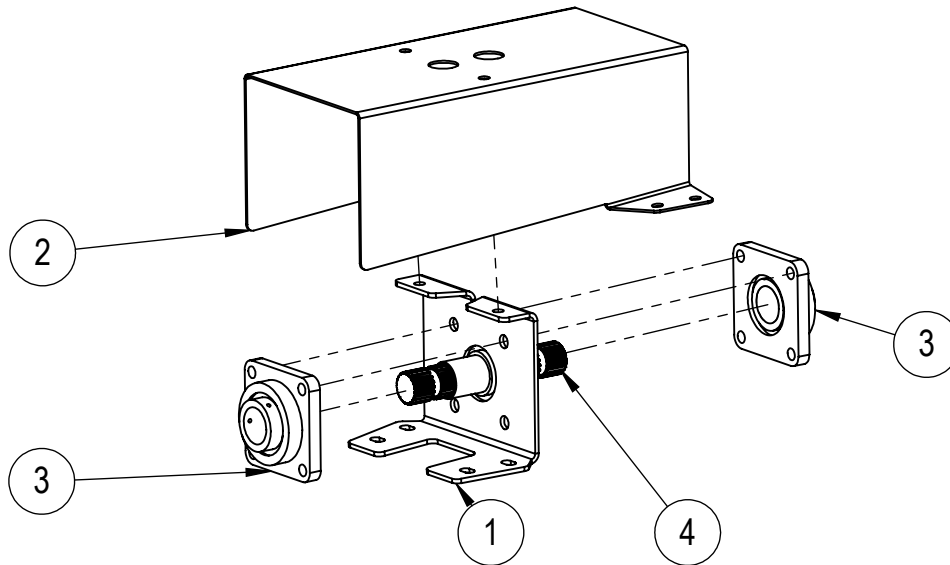
ITEM NO.	PART NUMBER	DESCRIPTION	QTY	PAGE
1	0228001-01	OUTER STAY ARM	1	-
2	0228001-02	INNER STAY ARM	1	-
3	0228001-03	PLASTIC BUSH	1	-
4	0228001-04	STAY ARM MOUNTING BRACKET	2	-
5	0228001-06	CATCH	1	-
6	0228002	SPOUT MOUNTING BRACKET	1	-
7	0228003	HOPPER SPOUT	1	-

STANDARED AUGER SUPPORT



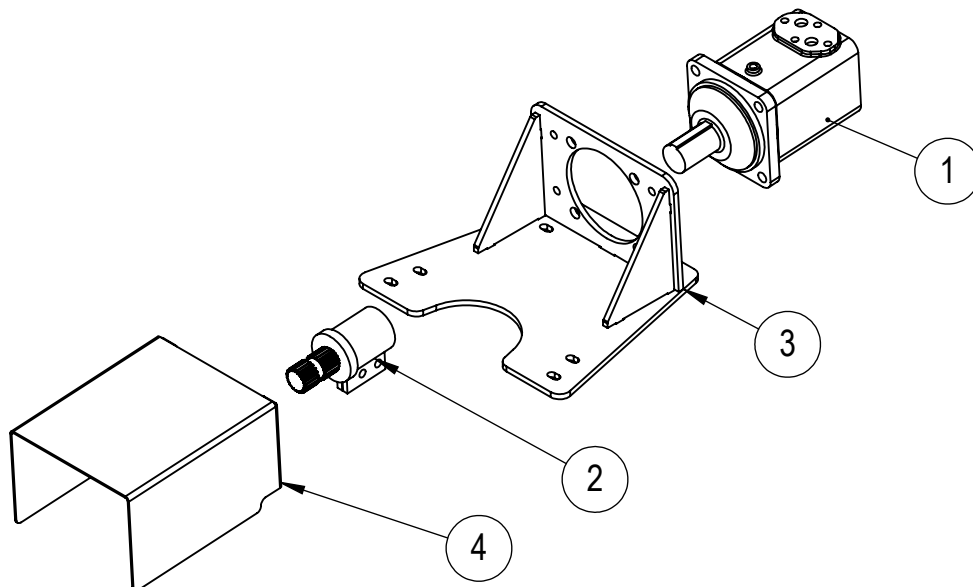
ITEM NO.	PART NUMBER	DESCRIPTION	QTY	PAGE
1	202-0116	RUBBER STOP	1	
2	3107040-01	VERTICAL SUPPORT	1	
3	3107040-02	HORIZONTAL SUPPORT	1	
4	3107040-03	BRACE	1	
5	3107040-04	AUGER SUPPORT PIN	2	
6	3107040-05	AUGER SUPPORT PIN	1	

PTO CONNECTOR



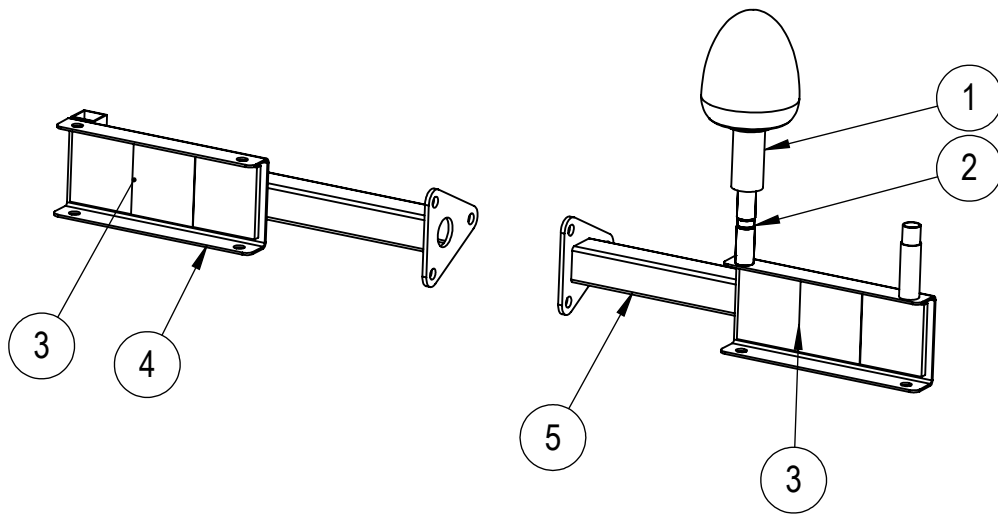
ITEM NO.	PART NUMBER	DESCRIPTION	QTY	PAGE
1	0207306-01	PTO HOUSING	1	
2	0207306-02	PTO GUARD	1	
3	456-2010	FLANGE BEARING UCF210	2	
4	680-3039	PTO DRIVE SPLINE	1	

HYDRAULIC DRIVE



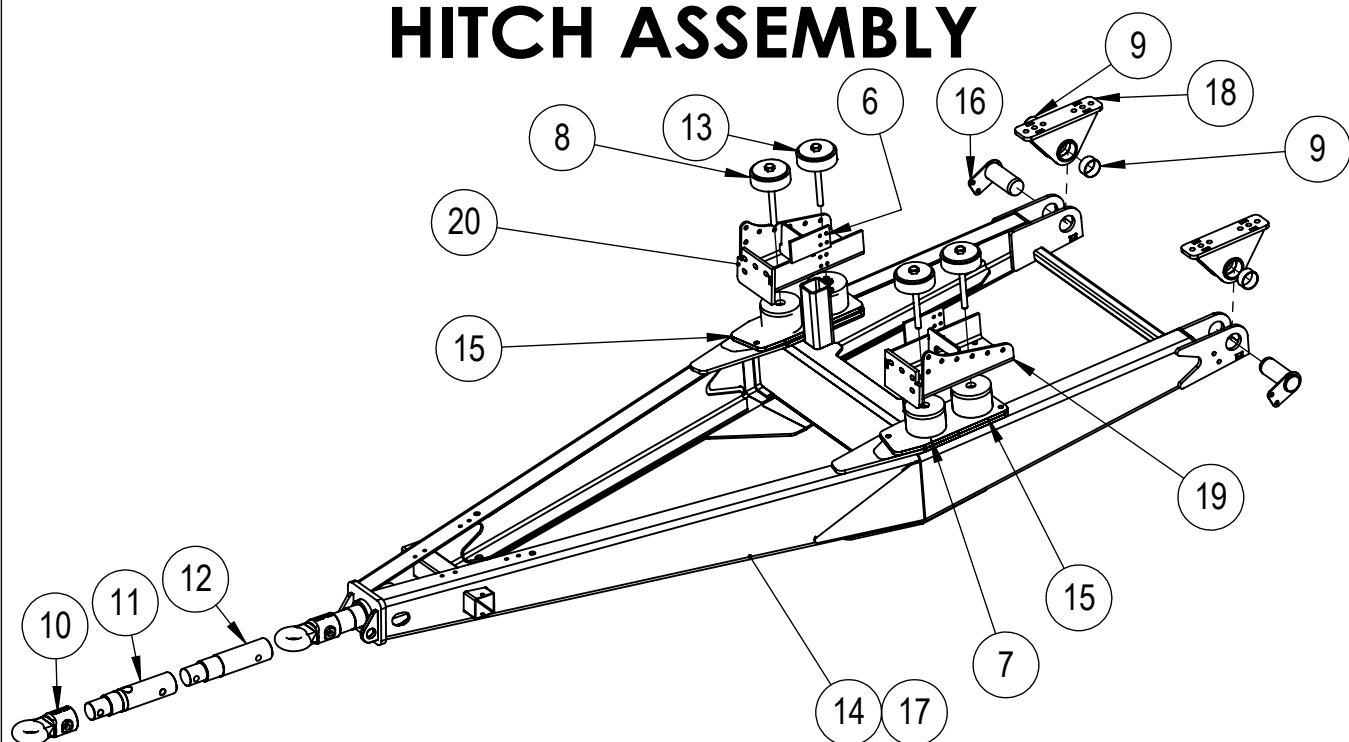
ITEM NO.	PART NUMBER	DESCRIPTION	QTY	PAGE
1	680-4041	HYDRAULIC MOTOR MV 400C	1	
2	0207092	HYD DRIVE SPLINE ASSEMBLY	1	
3	0207093	HYDRAULIC MOTOR MOUNTING ASSEMBLY	1	
4	0207091-07	PTO PROTECTION COVER	1	

TAIL LIGHT ASSEMBLY



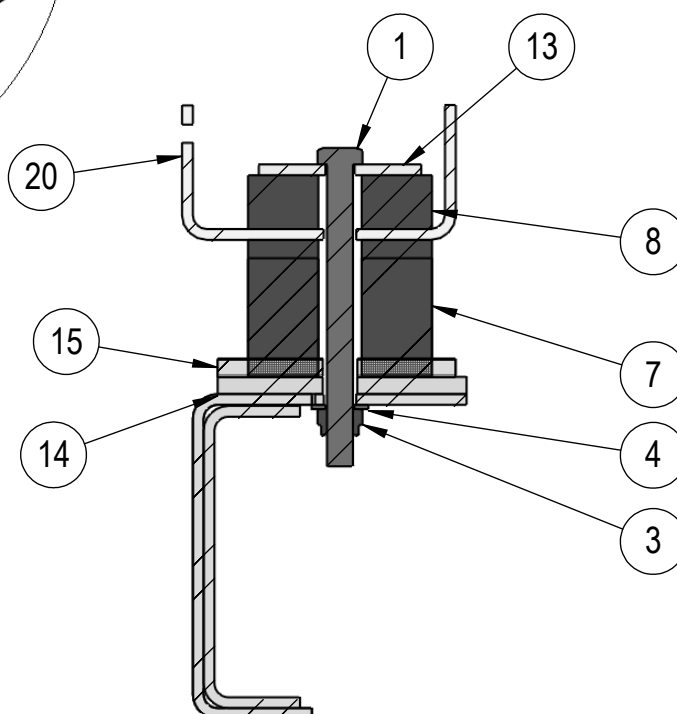
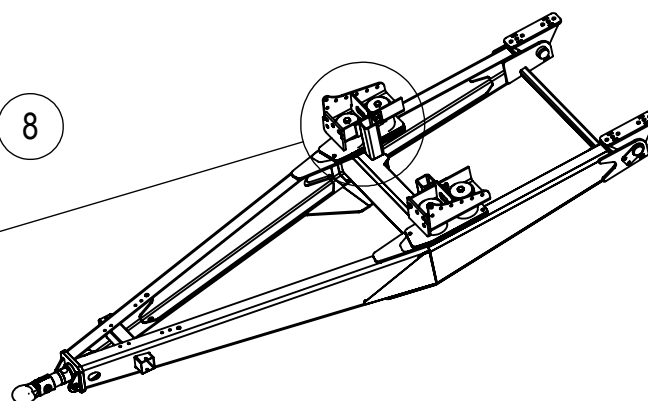
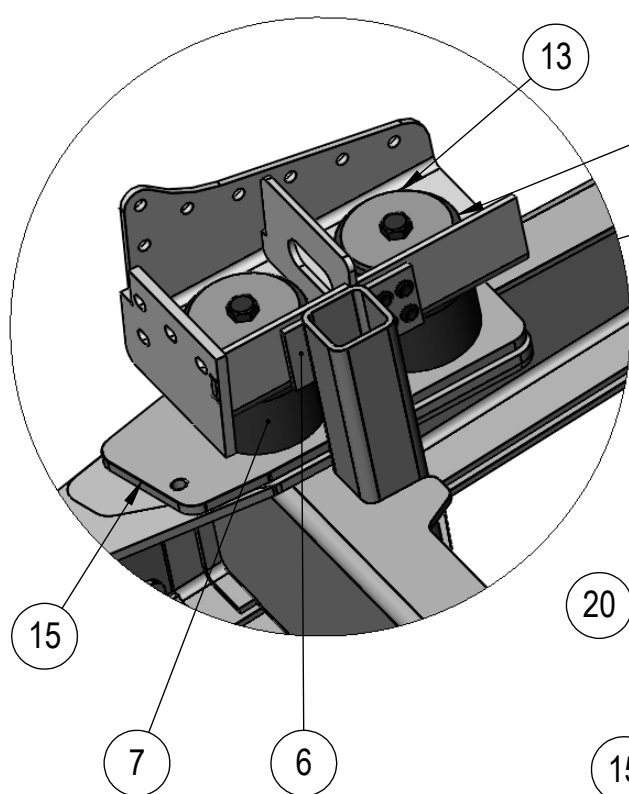
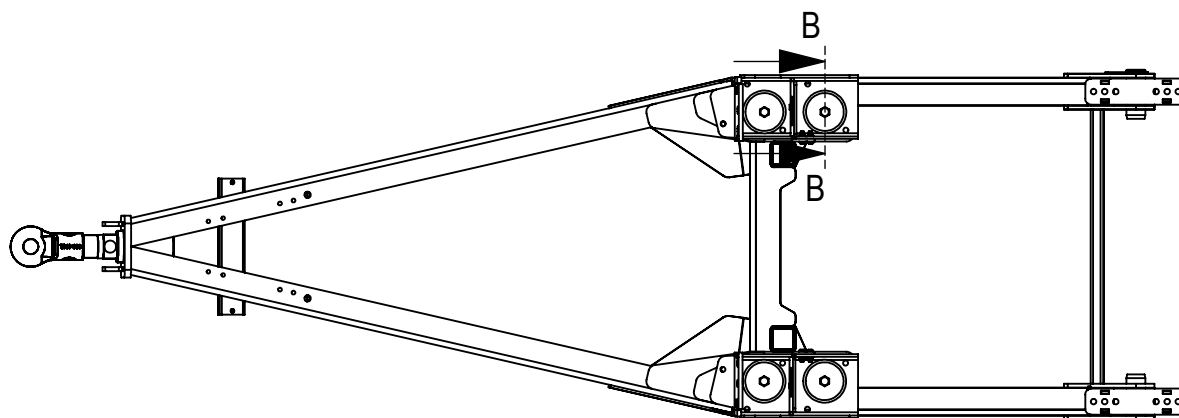
ITEM NO.	PART NUMBER	DESCRIPTION	QTY	PAGE
1	202-0112	FLEXIBLE POLE MOUNTED BEACON	1	-
2	202-0114	MOUNTING SOCKET	1	
3	202-0135	REFLECTORS	2	-
4	0219007	TAIL LIGHT WELDED ASSEMBLY LH	1	-
5	0219008	TAIL LIGHT WELDED ASSEMBLY RH	1	-

HITCH ASSEMBLY



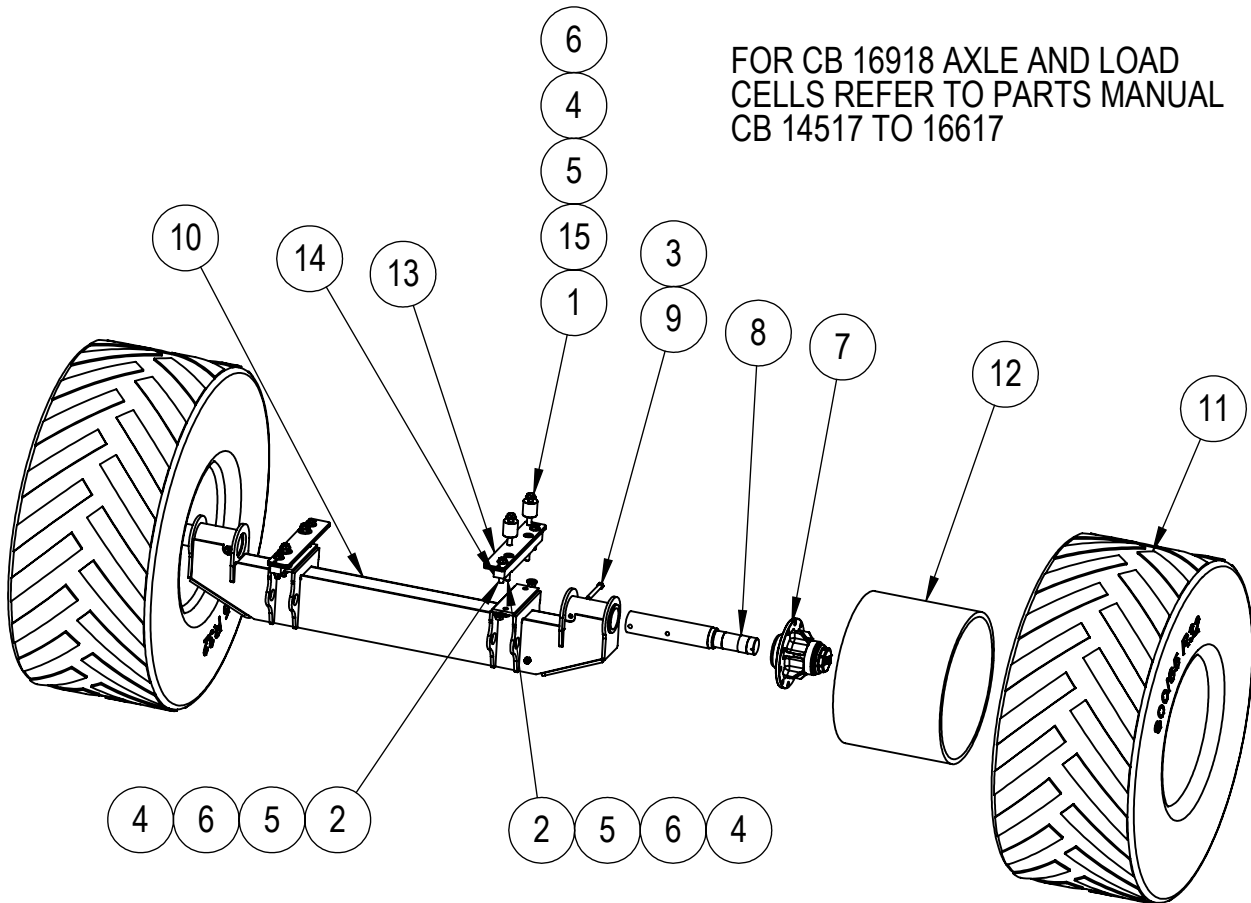
ITEM NO.	PART NUMBER	DESCRIPTION	QTY	PAGE
1	133-4118	M24 x 280 HEX BOLT ZINC GR8.8	4	-
2	133-4134	M12 x 40 HEX FLANGE BOLT ZINC GR 8.8	8	-
3	134-4042	M24 HEX NYLOCK NUT GR 8.8 ZINC PLATED	4	-
4	135-3023	FLAT WASHER M24	4	-
5	202-0053	M12 HEX NUT ZINC FLANGE GR 8.8	8	-
6	202-0109	BLACK NYLON WEAR PLATE	2	-
7	202-0110	110mm RUBBER CUSHION	2/4	-
8	202-0111	50mm RUBBER CUSHION	2/4	-
9	202-0130	BUSH ID 75, OD 80, Length 40	4	-
10	680-4042	TOW HITCH SWIVEL TOW EYE 30T	1	-
11	680-4100	LOAD CELL HITCH	1	-
12	680-4107	TOW SHANK	1	-
13	0202020-01	RUBBER HITCH SUSPENSION PLATE	2/4	-
14	3102002	18 AND 25 TON HITCH 30 AND 35 TON HITCH	1	-
15	3102002-19	30 AND 35 TON SPACER FOR RUBBER CUSHION	2	-
16	3102005	HINGE PIN	2	-
17	3102006	18 AND 25 TON HITCH	1	-
18	3102007	HINGE BRACKET WELDED ASSEMBLY	2	-
19	3105076	LH 30 AND 35 TON RUBBER CUSHION STOP	1	-
20	3105077	RH 30 AND 35 TON RUBBER CUSHION STOP	1	-

HITCH DETAILS



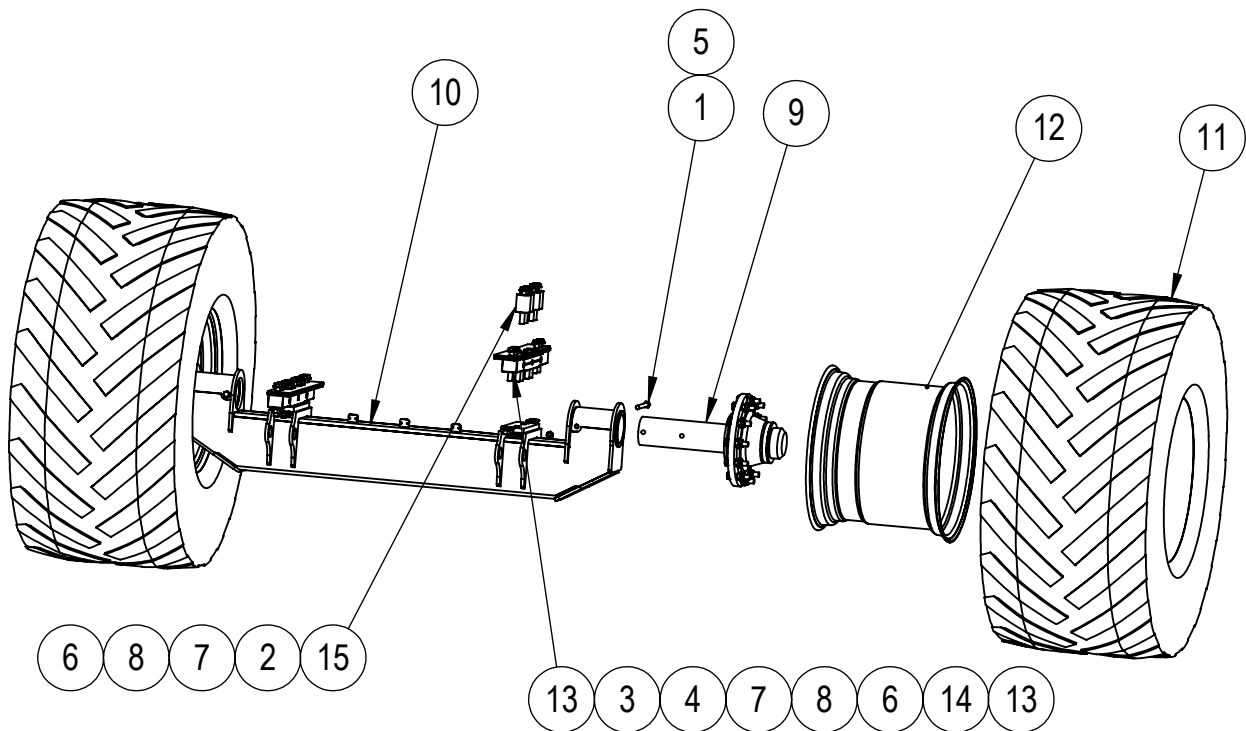
18 AND 25 TON AXLE

FOR CB 16918 AXLE AND LOAD
CELLS REFER TO PARTS MANUAL
CB 14517 TO 16617



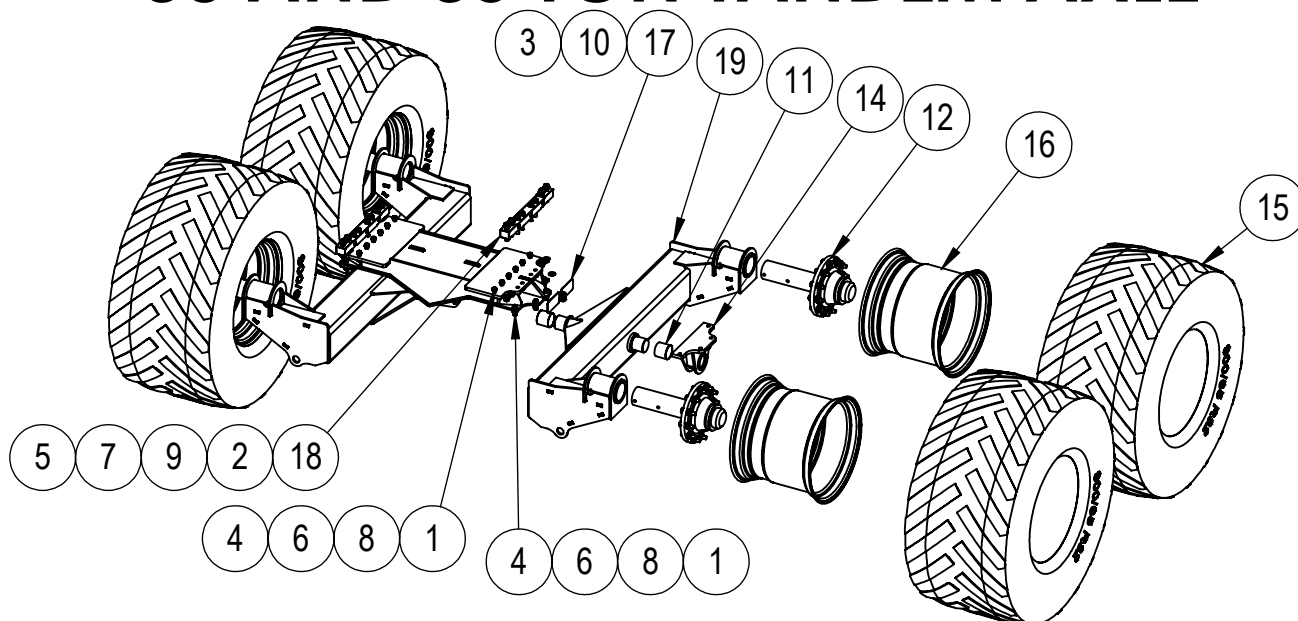
ITEM NO.	PART NUMBER	DESCRIPTION	LOAD CELL / QTY.	NO CELL / QTY.	PAGE
1	133-4165	M24 x 160 HEX BOLT ZINC GR8.8	-	4	-
2	133-4166	M24 x 120 HEX BOLT ZINC GR8.8	8	-	-
3	134-1046	M20 HEX NYLOCK NUT ZINC PLATED GR 8.8	2	2	-
4	134-4041	M24x1.5 HEX NUT GR8.8 FINE THREAD	8	4	-
5	135-3023	FLAT WASHER M24	16	8	-
6	135-3042	SPRING WASHER M24	8	4	-
7	139-2074	10 STUD HUB	2	2	22
8	139-3251	18 AND 25 TON STUB AXLE 3m	2	2	-
9	202-0077	M20 x 180 HEX FLANGE BOLT ZINC GR 8.8	2	2	-
10	680-3042	18T AND 25T SINGEL AXLE	1	1	-
11	680-4094 680-4095 680-4096	30.5x32 18 PLY BIAS TYRE 800/65 BIAS TYRE 900/60 BIAS TYRE	2	2	-
12	680-4097	WHEEL-10 STUD, DW2732, WHITE, ZERO OFFSET, 36mm SPHERICAL WHEEL NUTS USED	2	2	-
13	680-4273	SPACERS FOR 18 AND 25 TON	4	4	-
14	680-4274	J601 LOAD CELL	2	-	-
15	680-4285	LOAD CELL REPLACEMENT BLOCK	-	4	-

30 TON SINGLE AXLE



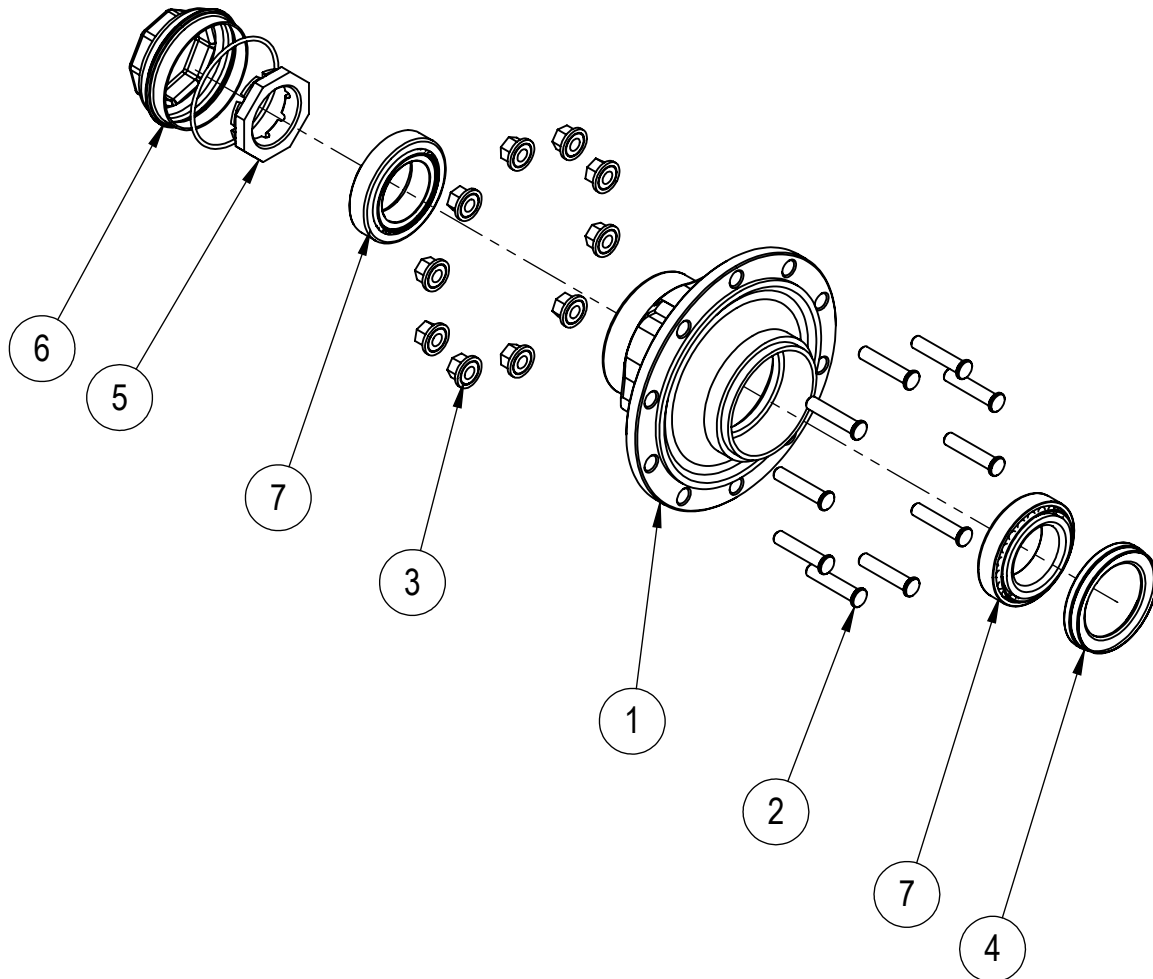
ITEM NO.	PART NUMBER	DESCRIPTION	LOAD CELL / QTY.	NO CELL / QTY.	PAGE
1	133-4108	M20 x 210 HEX BOLT ZINC GR8.8	2	2	-
2	133-4164	M24 x 180 HEX BOLT ZINC GR8.8	-	8	-
3	133-4165	M24 x 160 HEX BOLT ZINC GR8.8	8	-	-
4	133-4167	M24 x 130 HEX BOLT ZINC GR8.8	8	-	-
5	134-1046	M20 HEX NYLOCK NUT ZINC PLATED GR 8.8	2	2	-
6	134-4043	M24 HEX NUT GR 8.8	16	8	-
7	135-3023	FLAT WASHER M24	32	16	-
8	135-3042	SPRING WASHER M24	16	8	-
9	202-0138	STUB AXLE, 150 SERIES, 12 STUD 034.936.010, TITAN	2	2	23
10	680-3041	30 TON SINGLE AXLE	1	1	-
11	680-4096	900/60 R32 BIAS TYRE	2	2	-
12	680-4098	WHEEL-12 STUD, DW2732, WHITE, ZERO OFFSET, FLAT FACE WHEEL NUTS USED	2	2	-
13	680-4239	J750 LOAD CELL	2	-	-
14	680-4249	SPACER FOR 30 TON	4	-	-
15	680-4286	LOAD CELL REPLACEMENT BLOCK	-	8	-

30 AND 35 TON TANDEM AXLE



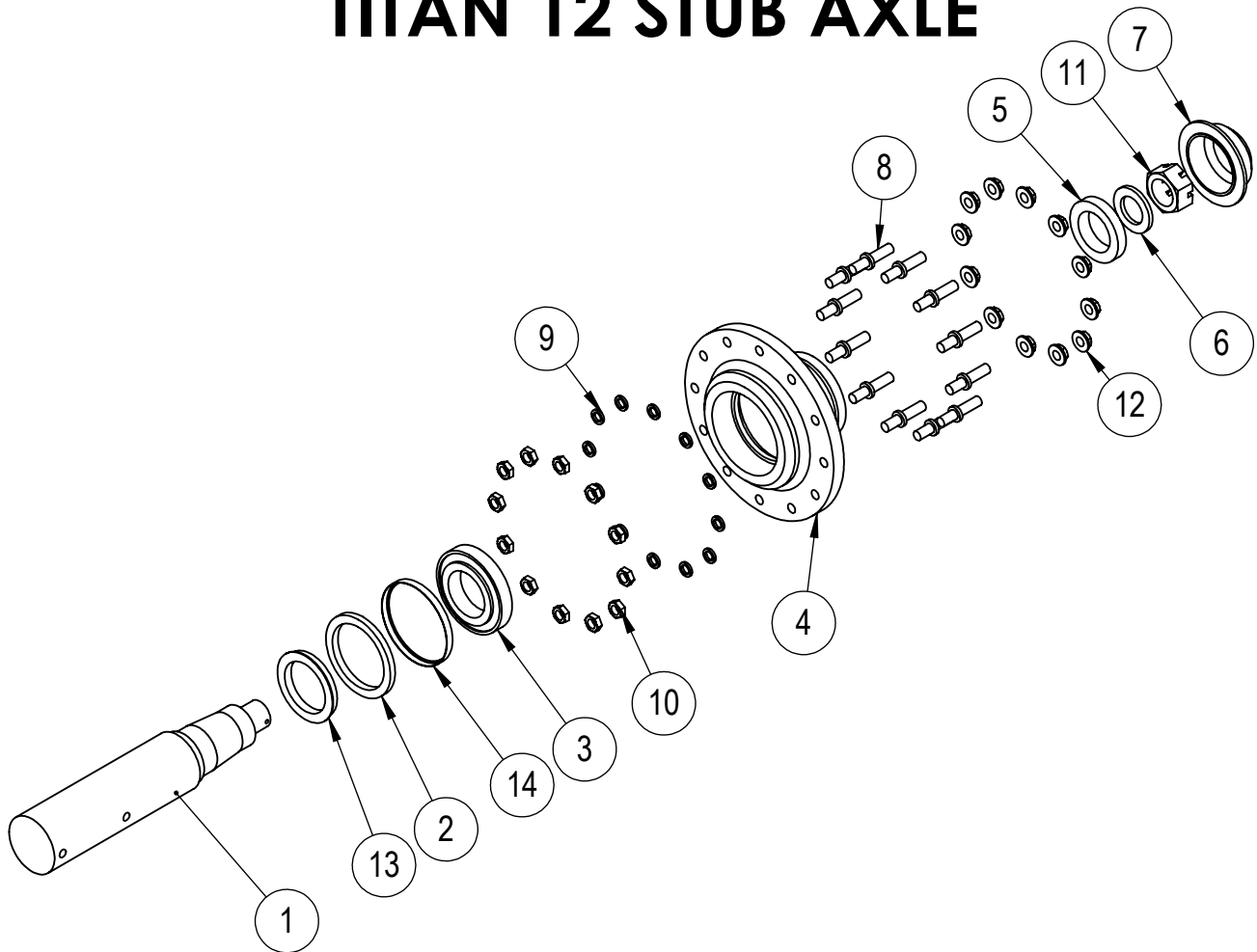
ITEM NO.	PART NUMBER	DESCRIPTION	LOAD CELL / QTY.	NO CELL / QTY.	PAGE
1	133-4073	M20 x 75 HEX BOLT ZINC GR8.8	8	20	
2	133-4112	M24 x 140 HEX BOLT ZINC GR8.8	16	-	
3	133-4135	M12 x 60 HEX FLANGE BOLT ZINC GR 8.8	2	2	
4	134-1045	M20 HEX NUT ZINC PLATED GR 8.8	8	20	
5	134-4043	M24 HEX NUT GR 8.8	16	-	
6	135-1015	SPRING WASHER M20	8	20	
7	135-3023	FLAT WASHER M24	25	1	
8	135-3040	WASHER FLAT M20	16	40	
9	135-3042	SPRING WASHER M24	24	-	
10	202-0053	M12 HEX NUT ZINC FLANGE GR 8.8	2	2	
11	202-0129	BUSH ID 110, OD 115, LENGTH 100	4	4	
12	202-0138	STUB AXLE, 150 SERIES, 12 STUD 034.936.010, TITAN	4	4	22
13	680-3045	TANDEM AXLES CENTER MOUNTING	1	1	
14	680-3046	DUAL AXLE SIDE MOUNTING	2	2	
15	680-4096	900/60 R32 BIAS TYRE	4	4	
16	680-4098	WHEEL-12 STUD, DW2732, WHITE, ZERO OFFSET, FLAT FACE WHEEL NUTS USED	4	4	
17	680-4099	BOLT COVER	4	4	
18	680-4239	J750 LOAD CELL	2	-	
19	3104008	TANDEM AXLES WELDED ASSEMBLY	2	2	

10 STUB HUB



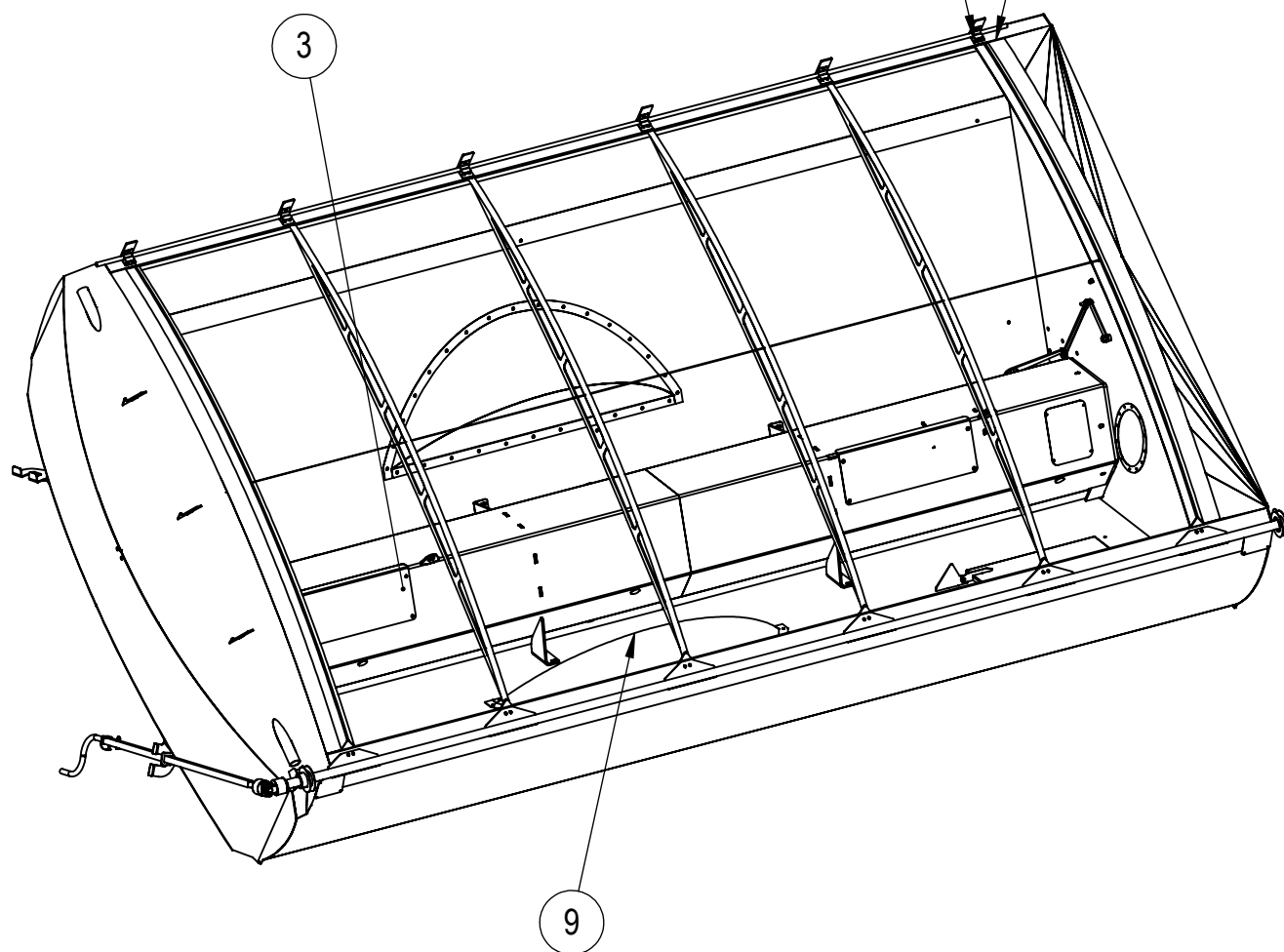
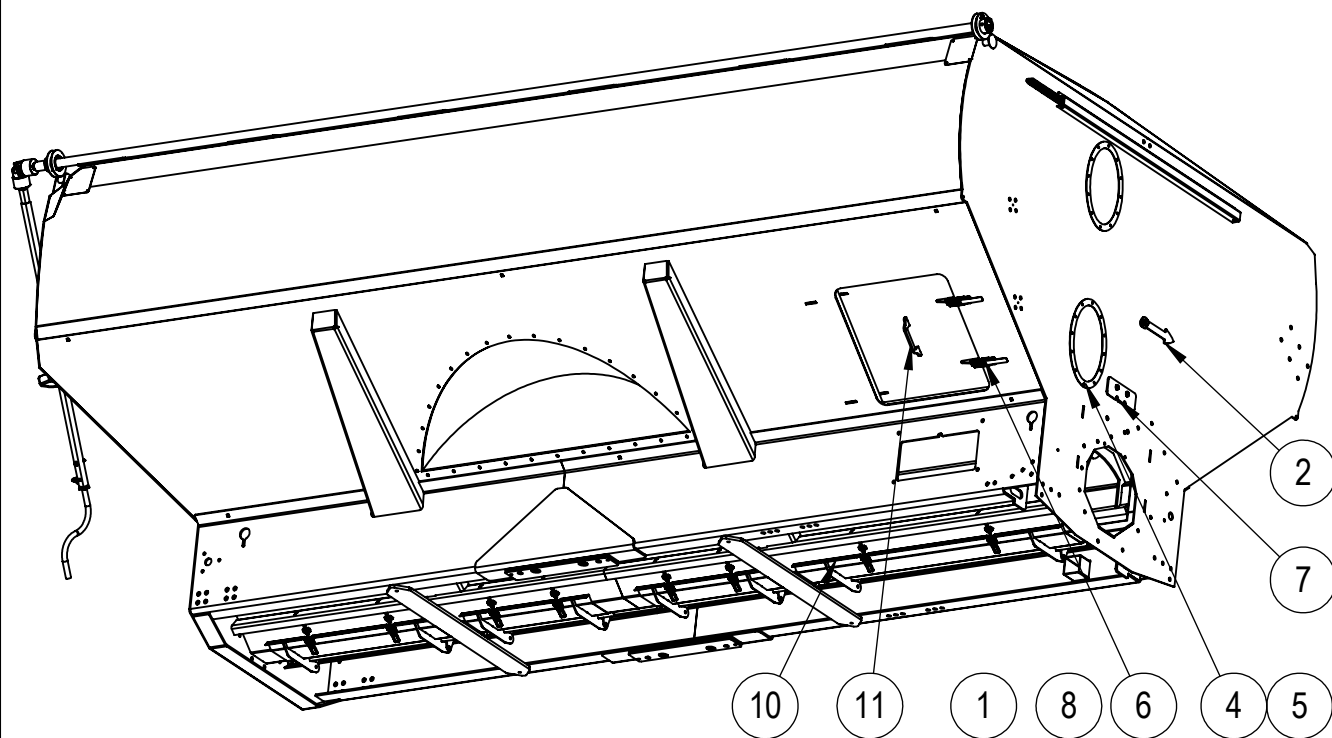
ITEM NO.	PART NUMBER	DESCRIPTION	QTY	PAGE
1	139-3230	10 STUD HUB	1	-
2	139-3232	WHEEL STUD M22x94 FINE TREAD	10	-
3	139-3233	WHEEL NUT M22 FINE TREAD, FLAT FACE 10 STUD	10	-
4	139-3234	SEAL	1	-
5	139-3235	10 STUB HUB CASTLE NUT	1	-
6	139-3236	HUB CAP	1	-
7	139-3238	10 STUD HUB BEARING CUP AND CONE	2	-
8	139-3250	O-RING ID 151.7 DIA 5.3	1	-

TITAN 12 STUB AXLE



ITEM NO.	PART NUMBER	DESCRIPTION	QTY	PAGE
1	139-4227	TITAN STUB AXLE FOR 034.936.010	1	-
2	139-4228	SEAL	1	-
3	139-4229	150 SERIES BEARING 30224 SKF	1	-
4	139-4230	150-12 HUB M/C AND DRILLED	1	-
5	139-4231	150 SERIES BEARING 32021 SKF	1	-
6	139-4232	150 SERIES WASHER	1	-
7	139-4233	DUST CAP 150 SERIES BOLT ON	1	-
8	139-4234	WHEEL STUD M24 x 2.0 x 122 T/S 150 SERIES	12	-
9	139-4235	WASHER SPRING M24	12	-
10	139-4236	NUT NYLOCK M24 X 2 GR 8	12	-
11	139-4237	NUT SLOTTED M70 X 2 ANDYS T/S 150 SERIES	1	-
12	134-4104	WHEEL NUT M24 x 2 C/W CAPTIVE ROTATING FLAT WASHER	12	-
13	139-4238	SEAL RING 150 SERIES 135 x 170.5 x 180 x 20.5	1	-
14	139-4239	WEAR RING 150 SERIES T/S SEAL 215 X 170 X 15	1	-

BIN ASSEMBLY



BIN ASSEMBLY MATERIAL LIST

ITEM NO.	PART NUMBER	DESCRIPTION	QTY	PAGE
1	202-0131	TARP INSTALLATION	1	32-36
2	680-2106	CHASER BIN POINTER ASSEMBLY	1	37
3	3131019	GRAIN CONTROL DOORS	1	38
4	202-0074	WINDOW PERSPEX 6MM THICK (BIN)	2	-
5	680-4091	WINDOW SURROUND	4	-
6	680-4092	SPRING LATCH PIN SH-246	2	-
7	0205068	HYDRAULIC HOSE CLAMP PLATE	1	-
8	3105026	BIN WELDED ASSEMBLY	1	-
9	3105037	WHEEL ARCH WELDED ASSEMBLY	2	-
10	3105055	GRAIN DUMP DOORS	A/R	-
11	3114001	ACCESS DOOR WELDED ASSEMBLY	1	-

HOSE LIST FOR HYDRAULIC DRIVE

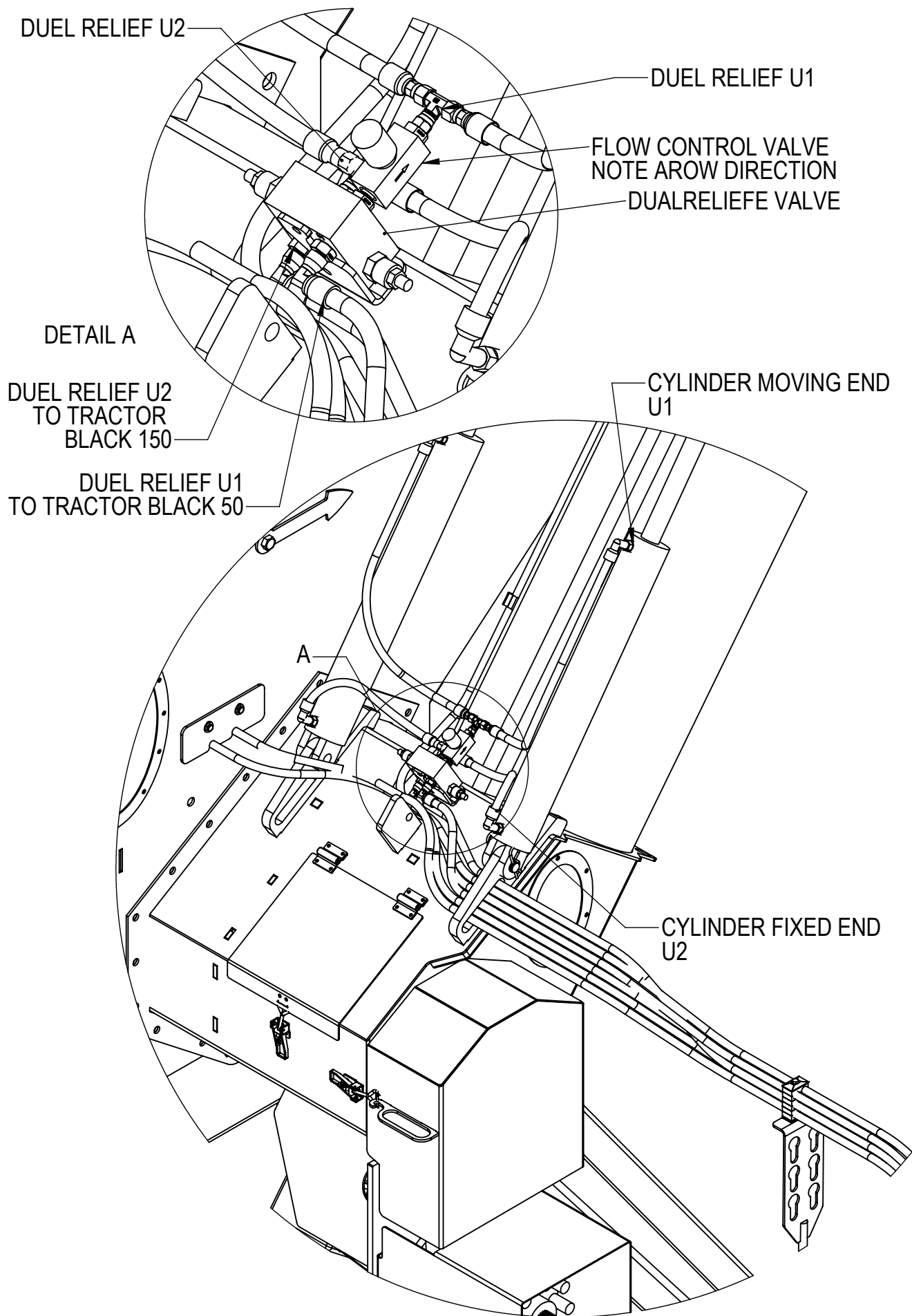
ITEM NO.	PART NUMBER	DESCRIPTION	QTY.	HOSE SIZE	FITTING END	Length	END 1	END 2
1	3131018-01	DUMP LINE TRACTOR TO HYDRAULIC MOTOR B	1	HYDRAULIC HOSE 1"	1 5/16 JIC FEMALE	1750	B	B
2	3131018-02	PRESSURE LINE TRACTOR TO HYDRAULIC MOTOR A	1	HYDRAULIC HOSE 1"	1 5/16 JIC FEMALE	1750	A	A
3	3131018-03	TWIN REMOTE COUPLING	1	HYDRAULIC HOSE 3/4"	1 1/16 JIC FEMALE	1000		
4	3131018-04	DRAIN LINE	1	10mm HOSE	FEMALE SWAGE COUPLING 3/4-16	1950		

HOSE LIST FOR BIN

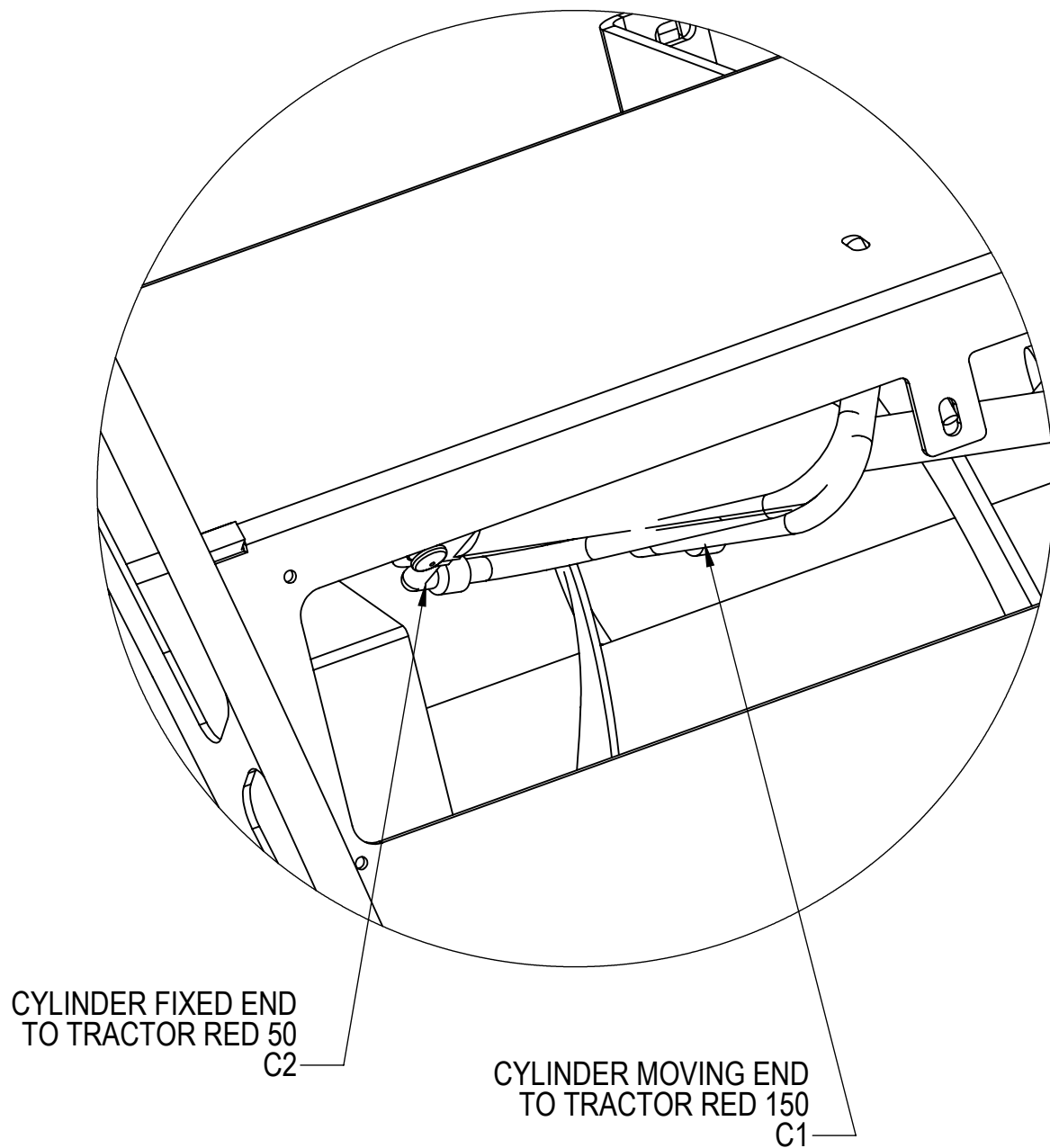
ISO COUPLING TO GO ON ALL HOSE WRAPPED ENDS

ITEM NO.	PART NUMBER	DESCRIPTION	QTY	HOSE SIZE	FITTING END	Length	END 1	END 2
1	3131009-06	TRACTOR TO DUEL RELIEF U1	1	HYDRAULIC HOSE 1/4"	9/16 JIC FEMALE	3720	BLACK 50	U1
2	3131009-05	TRACTOR TO DUEL RELIEF U2	1	HYDRAULIC HOSE 1/4"	9/16 JIC FEMALE	3720	BLACK 150	U2
3	3131009-04	DUAL RELIEF U2 TO CYLINDER FIXED END	2	HYDRAULIC HOSE 1/4"	9/16 JIC FEMALE	400	U2	U2
4	3131009-03	DUAL RELIEF U1 TO CYLINDER MOVING END	2	HYDRAULIC HOSE 1/4"	9/16 JIC FEMALE	650	U1	U1
5	3131009-02	TRACTOR TO SPOUT CYLINDER FIXED END	1	HYDRAULIC HOSE 1/4"	9/16 JIC FEMALE	9780	YELLOW 50	D2
6	3131009-01	TRACTOR TO SPOUT CYLINDER MOVING END	1	HYDRAULIC HOSE 1/4"	9/16 JIC FEMALE	9780	YELLOW 150	D1
7	3131017-01	TRACTOR TO GRAIN GAT CYLINDER MOVING END	1	HYDRAULIC HOSE 1/4"	9/16 JIC FEMALE	5850	RED 150	C1
8	3131017-02	TRACTOR TO GRAIN GAT CYLINDER FIXED END	1	HYDRAULIC HOSE 1/4"	9/16 JIC FEMALE	5850	RED 50	C2

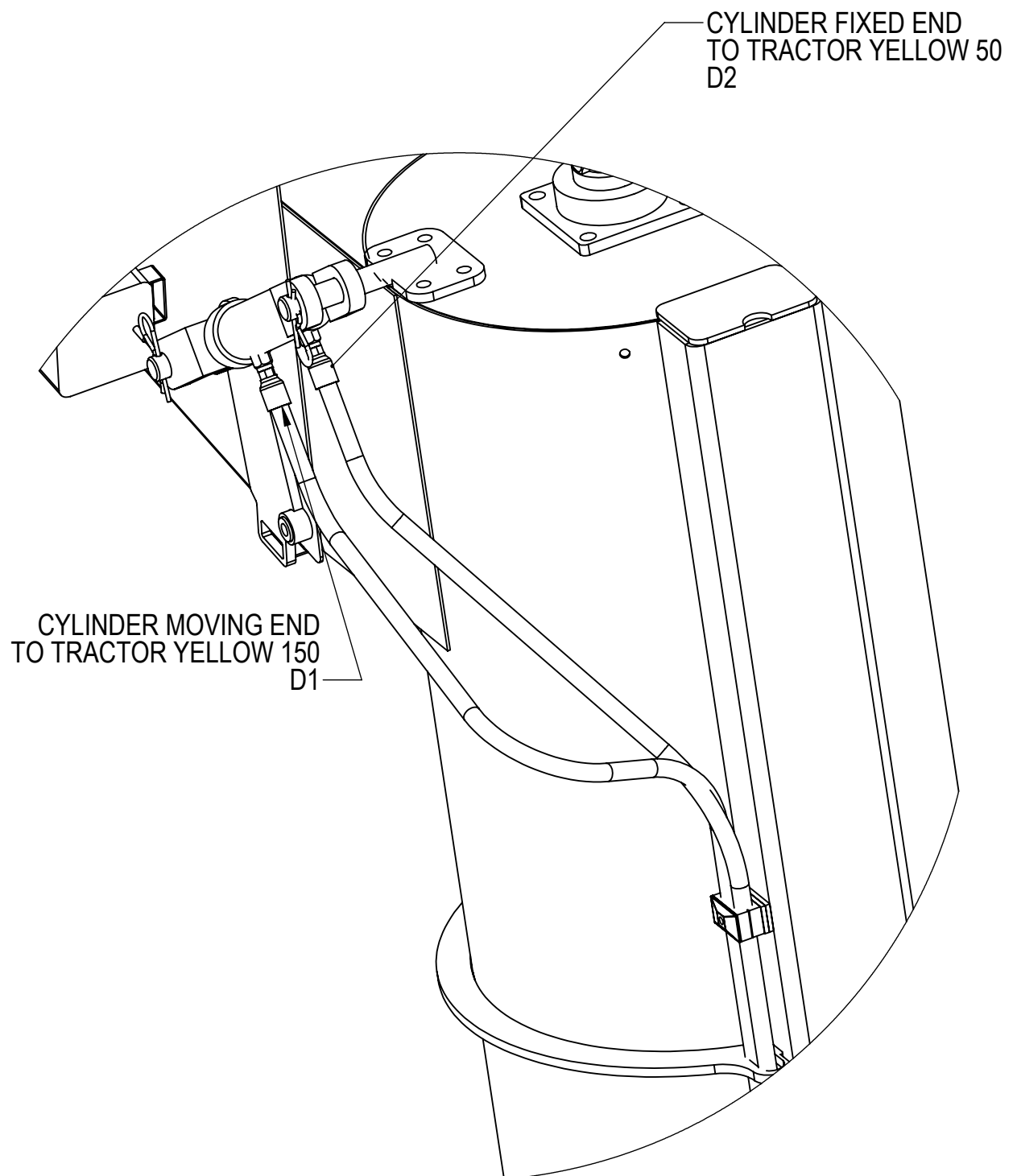
AUGER FOLD PIPING



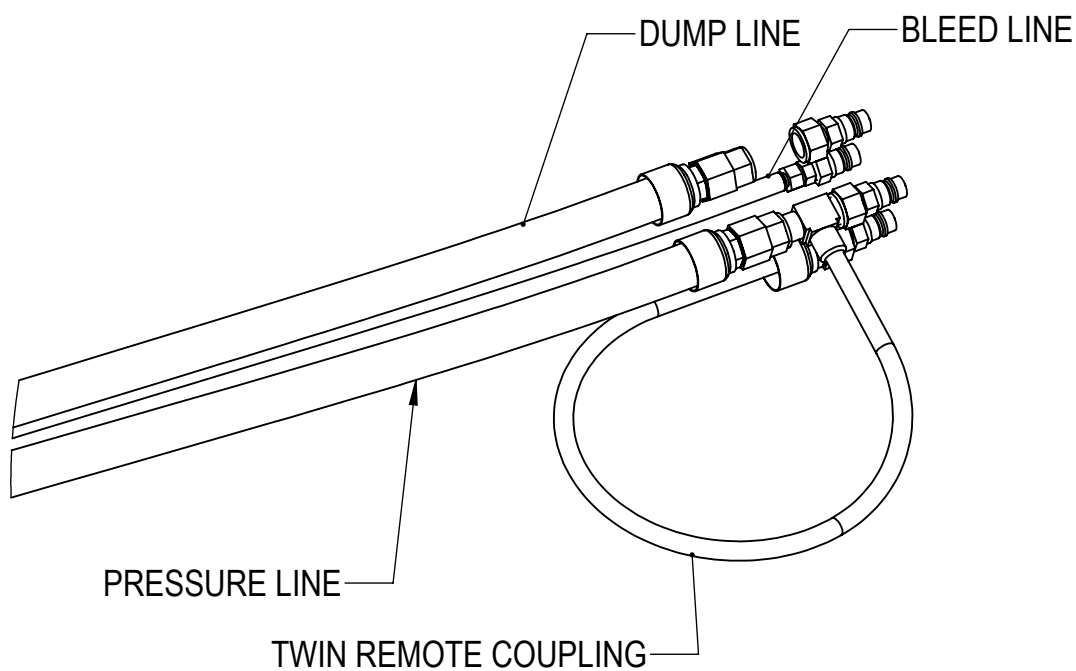
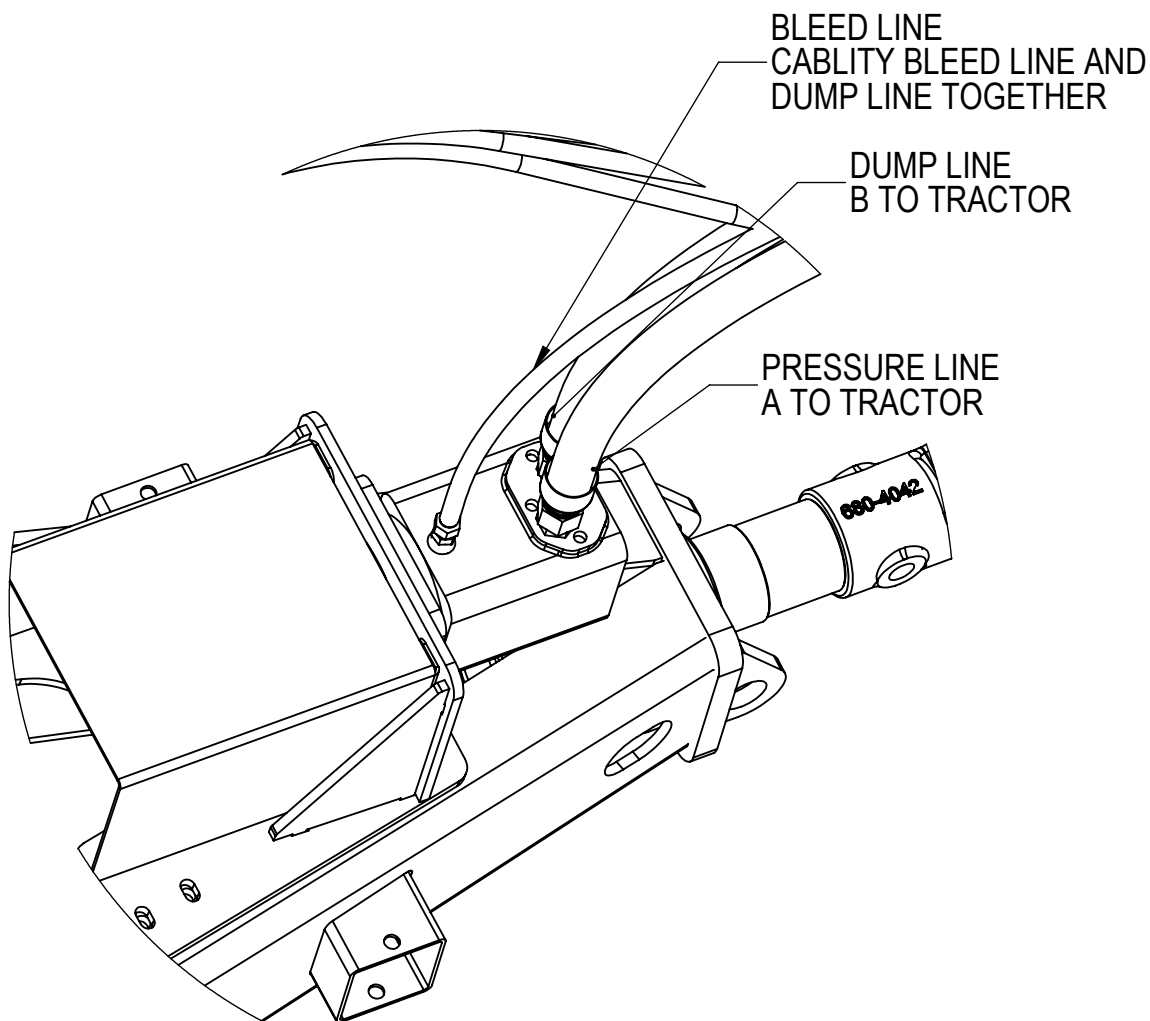
GRAIN CONTROL FLOW PIPING



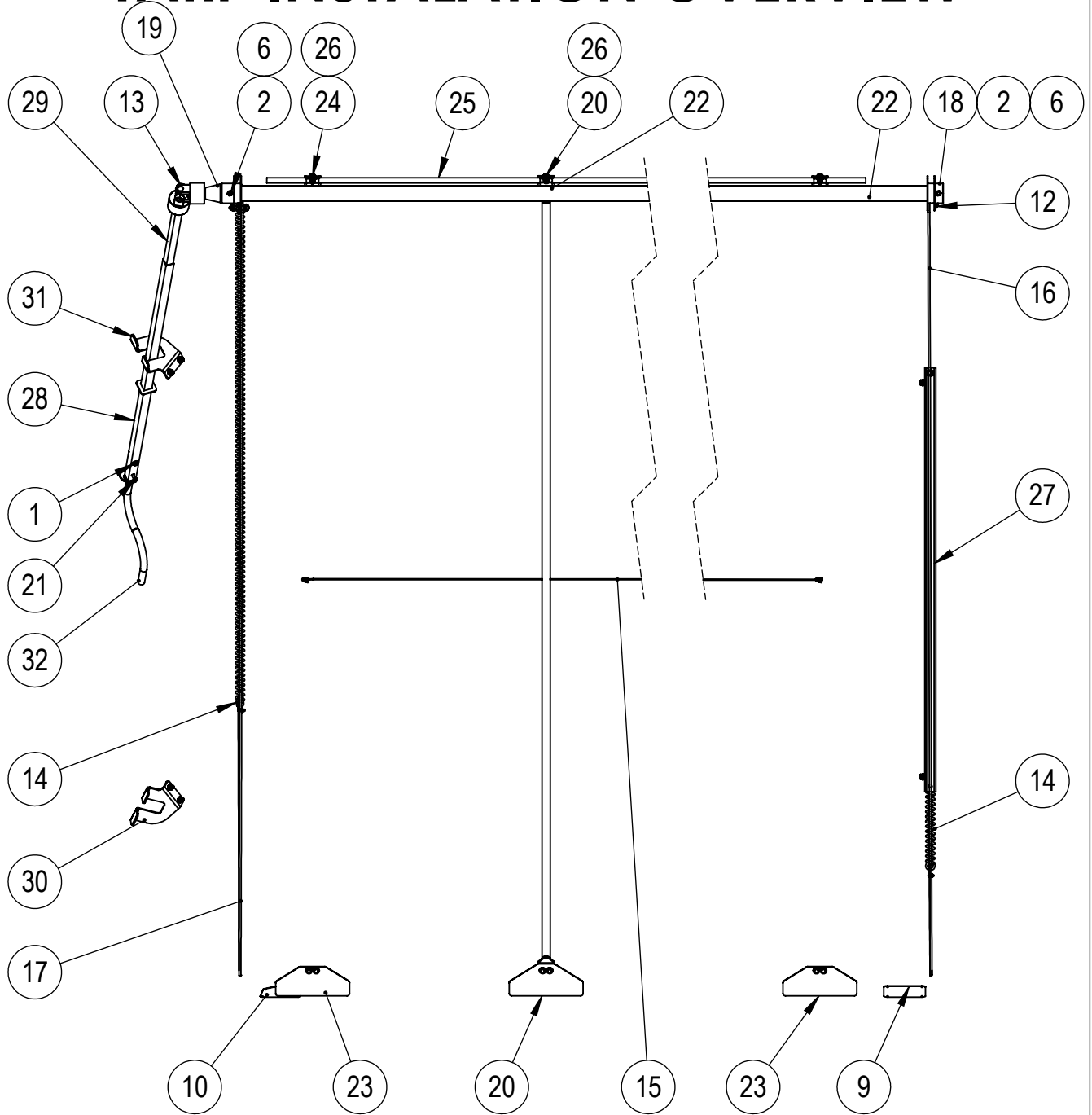
SPOUT CONTROL PIPING



HYDRAULIC CONTROL PIPING



TARP INSTALLATION OVERVIEW



TARP MATERIAL LIST

ITEM NO.	PART NUMBER	DESCRIPTION	QTY	PAGE
1	133-4041	M10 x 60 HEX BOLT ZINC GR8.8	1	
2	133-4109	M12 x 100 HEX BOLT ZINC GR8.8	2	
3	133-4133	M12 x 30 HEX FLANGE BOLT ZINC GR 8.8	34	
4	134-0050	M10 HEX NYLOCK NUT ZINC PLATED GR 8.8	1	
5	134-0057	WASHER FLAT M10	2	
6	134-4016	M12 HEX NYLOCK NUT ZINC PLATED GR 8.8	4	
7	135-3012	WASHER FLAT M12	4	
8	202-0053	M12 HEX NUT ZINC FLANGE GR 8.8	36	
9	202-0072	ROLL TARP STOP FRONT STAINLESS	1	
10	202-0073	ROLL TARP STOP BACK STAINLESS	1	
11	202-0081	M12 x 80 HEX BOLT ZINC GR8.8	2	
12	202-0096	4mm WIRE ROPE CLAMP	6	
13	202-0107	UNI JOINT QUICK RELEASE 21 SPLINE	1	
14	202-0108	TARP SPRING 20633B	2	
15	202-0146	4mm WIRE SUPPORT ROPE	7	
16	202-0146	4mm WIRE TENSION ROPE	6	
17	202-0146	4mm WIRE TENSION ROPE	6	
18	680-2054	TARP ROLL END	1	
19	680-4078	TARP ROLL SPIGOT	1	
20	680-4080	TARP SUPPORT BOW	4	
21	680-4084	SHAFT LOCKING PIN	1	
22	680-4200	25T TARP ROLL PIPE	1	
23	680-4205	PLATE	2	
24	0215002-01	TARP CATCHER	2	
25	0215002-02	TARP RETAINING ROD	1	
26	0215002-03	TARP CLAMP	6	
27	0215009-02	SPRING COVER	1	
28	0215010	TARP HANDEL PART 2	1	
29	0215012		1	
30	0215013-01	TARP ROLLER HANDEL HOLDER RH	1	
31	0215013-02	TARP ROLLER HANDEL HOLDER LH	1	
32	0215021	REMOVABLE TARP HANDLE	1	

TARP INSTALLATION FRONT

This diagram illustrates the front view of a tarp installation, showing the main tarp body and various components that attach to it. The components are numbered as follows:

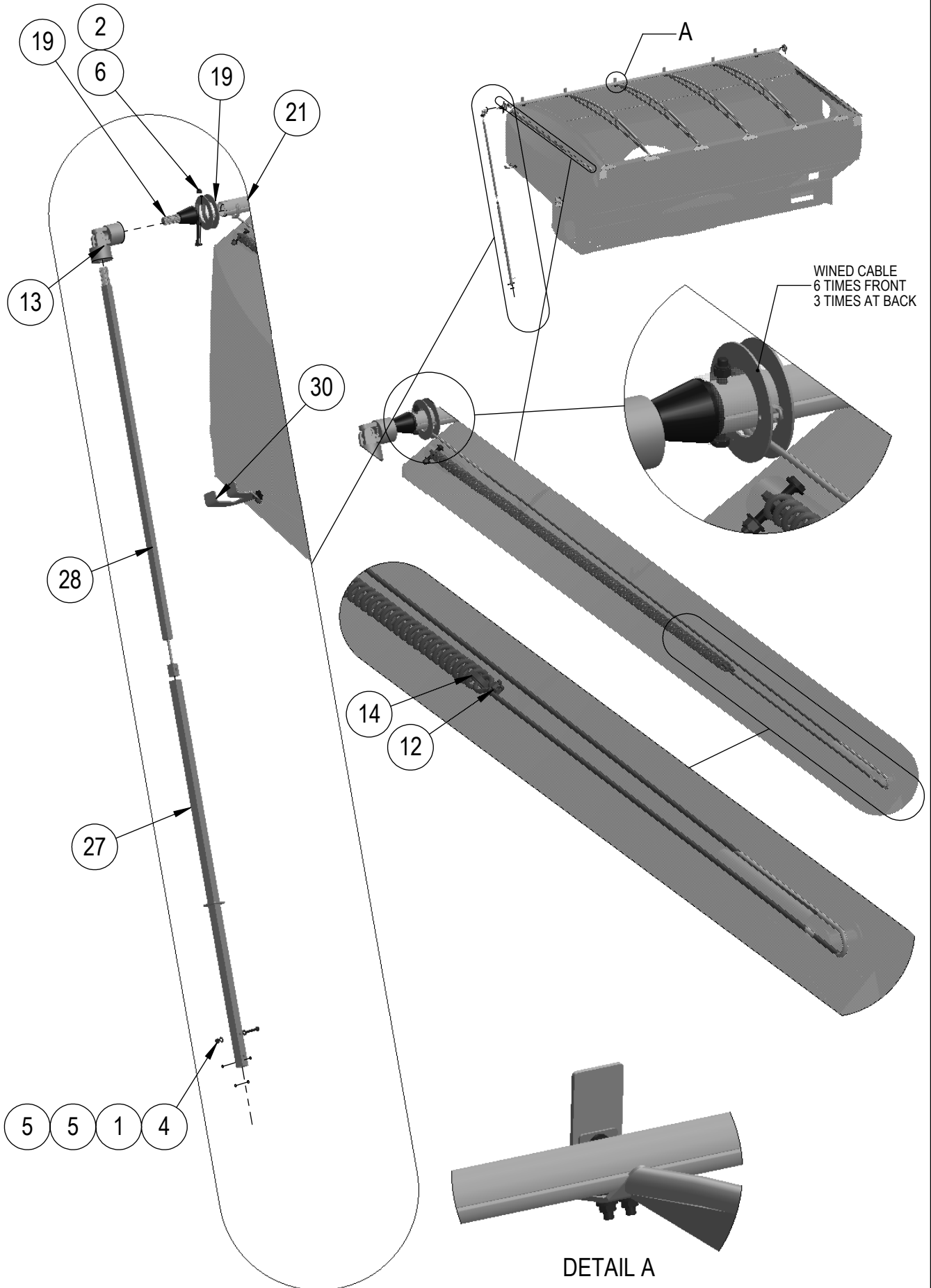
- 1: Tarp body
- 2: Cable clamp
- 6: Cable clamp
- 12: Cable clamp
- 15: Cable clamp
- 14: Cable clamp
- 18: Cable clamp
- 22: Cable clamp
- 27: Cable clamp

Additional components shown in detail include:

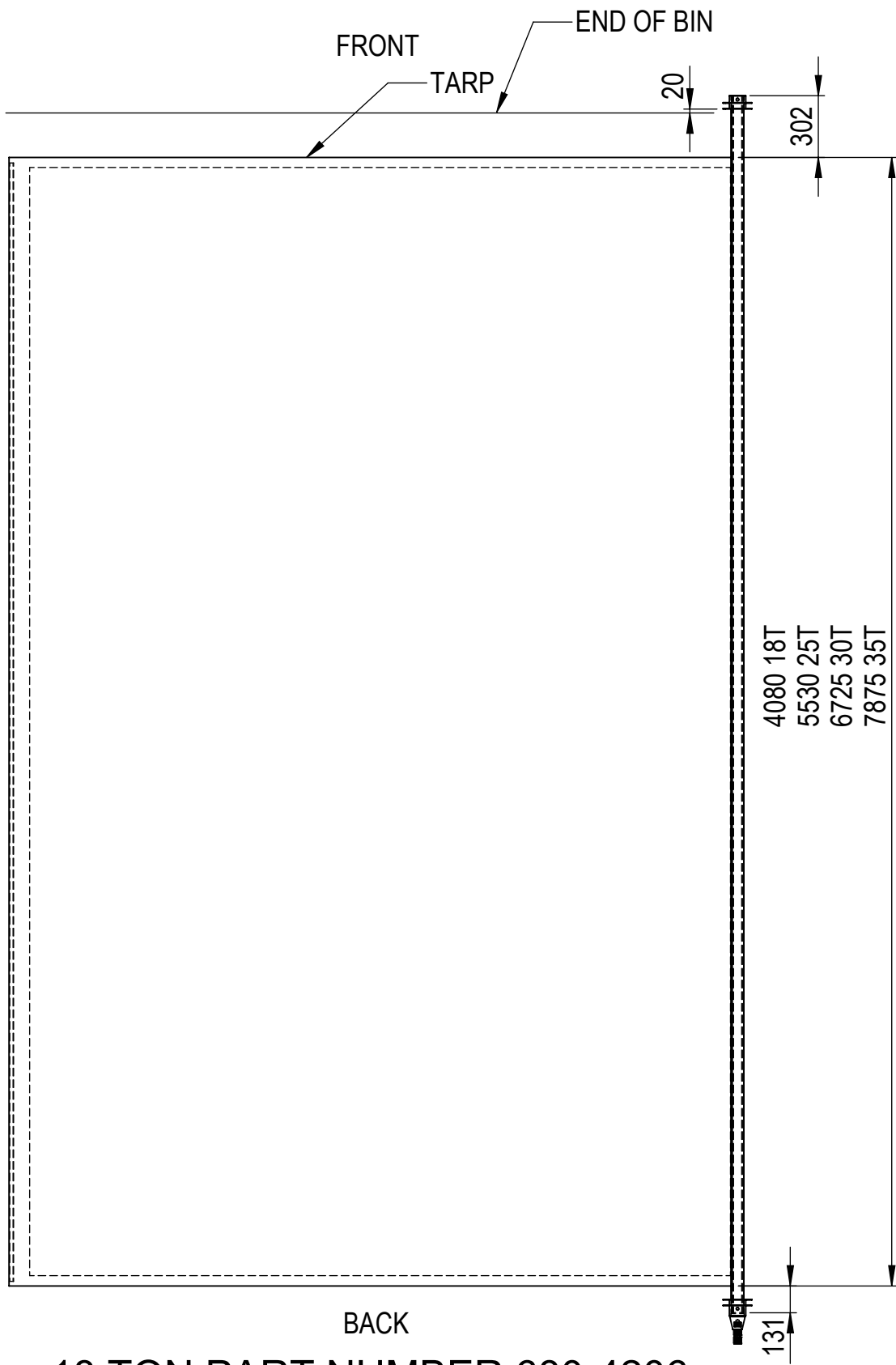
- Wined cable (6 times front, 3 times at back)
- Wined cable (6 times front, 3 times at back)
- Wined cable (6 times front, 3 times at back)

The diagram shows the tarp body with a series of cables running along its length. The cables are attached to the tarp body using cable clamps (1, 2, 6, 12, 15, 14, 18, 22, 27). The cables are also attached to the tarp body using a wined cable (6 times front, 3 times at back). The diagram shows the tarp body with a series of cables running along its length. The cables are attached to the tarp body using cable clamps (1, 2, 6, 12, 15, 14, 18, 22, 27). The cables are also attached to the tarp body using a wined cable (6 times front, 3 times at back).

TARP INSTALLATION BACK

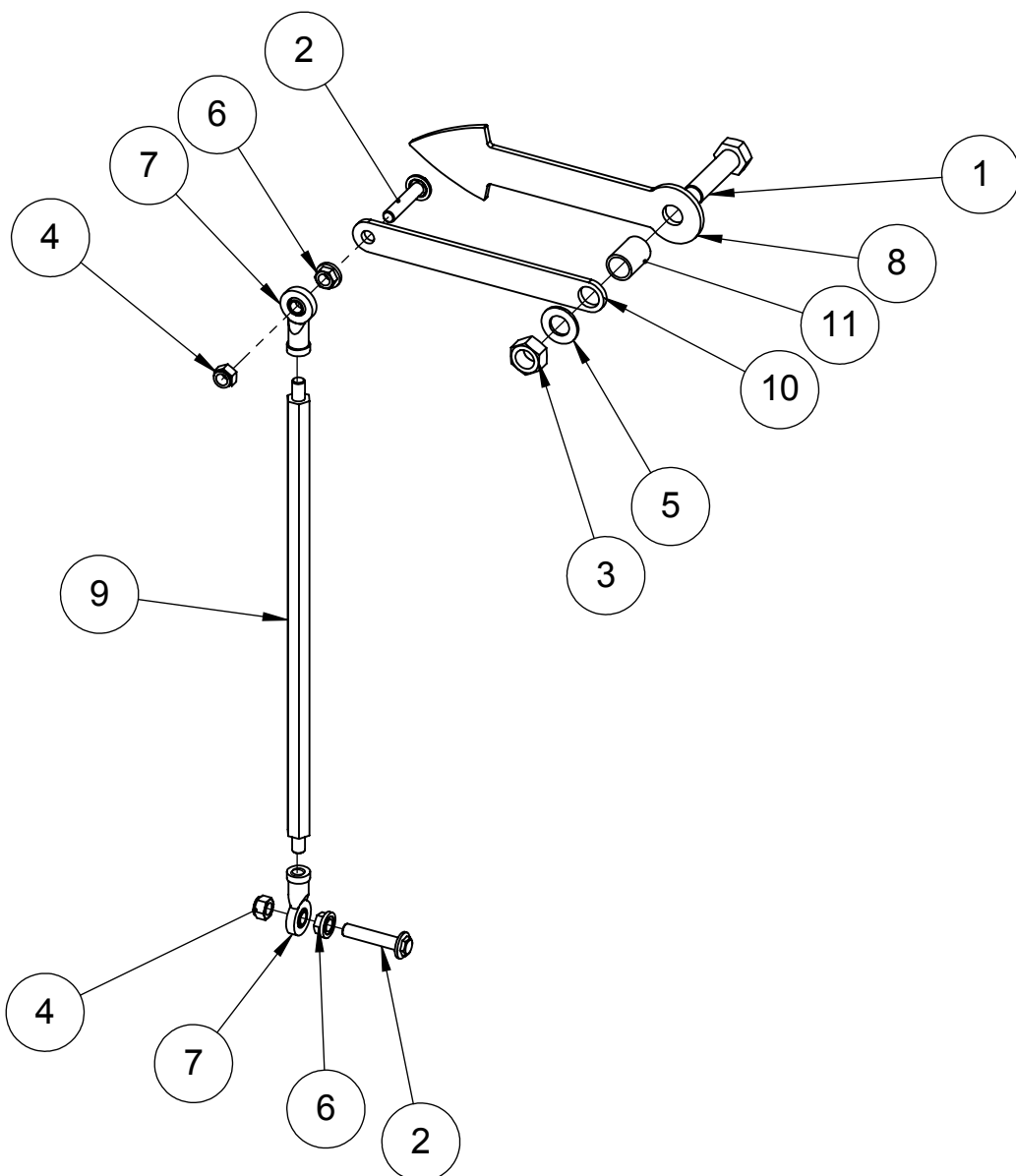


TARP ASSEMBLY



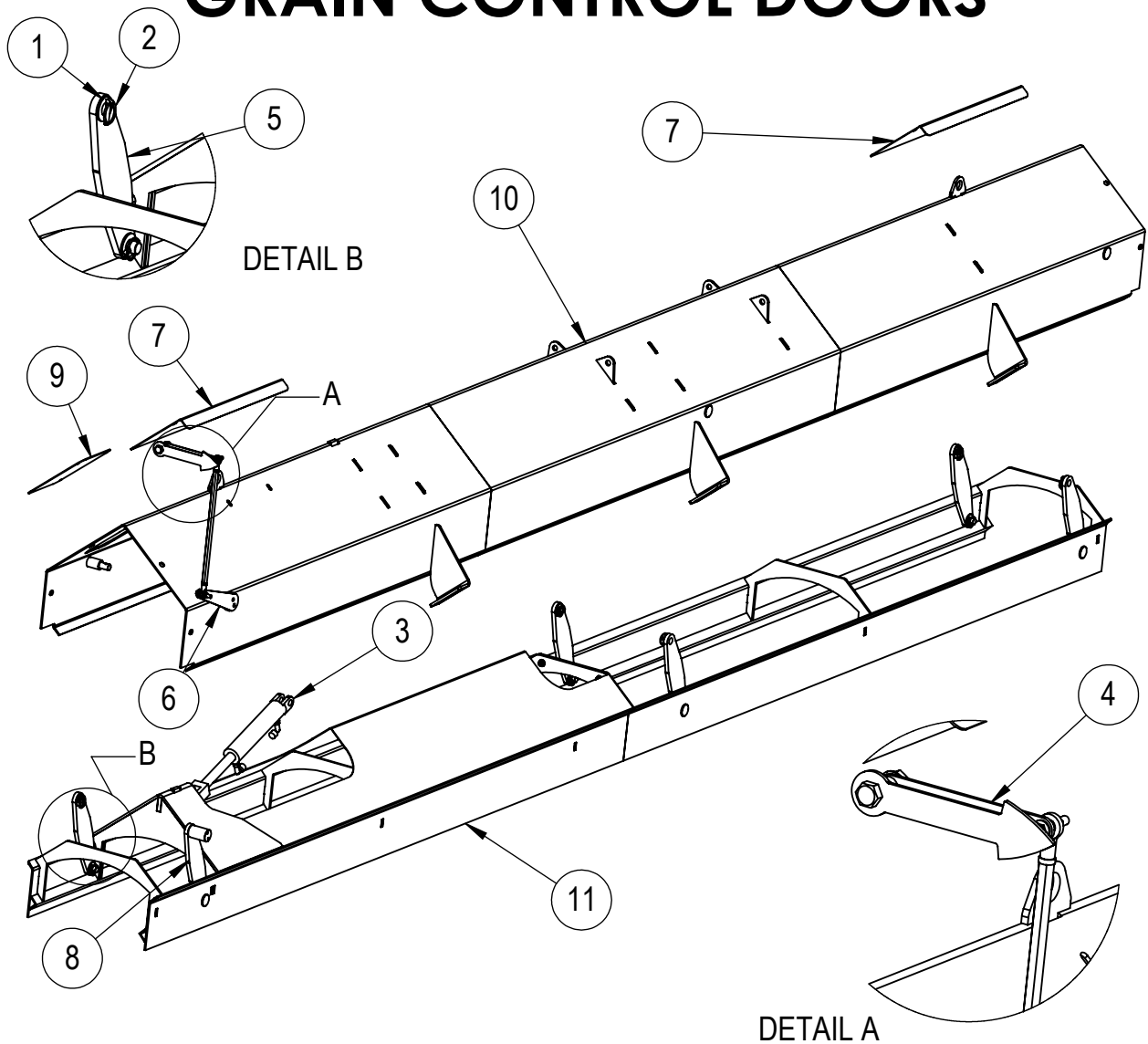
- 18 TON PART NUMBER 680-4206
- 25 TON PART NUMBER 680-4207
- 30 TON PART NUMBER 680-4208
- 35 TON PART NUMBER 680-4209

POINTER ASSEMBLY



ITEM NO.	PART NUMBER	DESCRIPTION	QTY	PAGE
1	133-4073	M20 x 75 HEX BOLT ZINC GR8.8	1	
2	133-4135	M12 x 60 HEX FLANGE BOLT ZINC GR 8.8	2	
3	134-1045	M20 HEX NUT ZINC PLATED GR 8.8	1	
4	134-4016	M12 HEX NYLOCK NUT ZINC PLATED GR 8.8	2	
5	135-3040	WASHER FLAT M20	1	
6	202-0053	M12 HEX NUT ZINC FLANGE GR 8.8	2	
7	202-0083	ROD END METRIC FEMALE NARROW RH M12x12ID	2	
8	680-4043	POINTER	1	
9	680-4046	HEX BAR	1	
10	680-4089	POINTER LINK PLATE	1	
11	680-4090	SPACER	1	

GRAIN CONTROL DOORS



ITEM NO.	PART NUMBER	DESCRIPTION	QTY	PAGE
1	135-3023	FLAT WASHER M24	11	-
2	140-0039	LINCH PIN 11mm 32mm	11	-
3	202-0118	HYD CYLINDER 2.5" x 8"	1	-
4	680-2106	POINTER ASSEMBLY	1	37
5	0214073-01	ARM	5	-
6	0214080-02	POINTER ARM	1	-
7	0214080-03	INSPECTION DOOR	2	-
8	0214081	ARM ASSEMBLY	1	-
9	0214111-01	INSPECTION COVER	1	-
10	0214112	GRAIN CONTROL HOOD	1	-
11	0214113	GRAIN CONTROL DOORS	1	-

BIN WIRING DIAGRAM

HITCH &
WORK LIGHT LOOM
2 CORE 1020mm
2 CORE 7300mm
5 CORE 5300mm

WORK LIGHT AND PLUG

WORK LIGHT AND PLUG

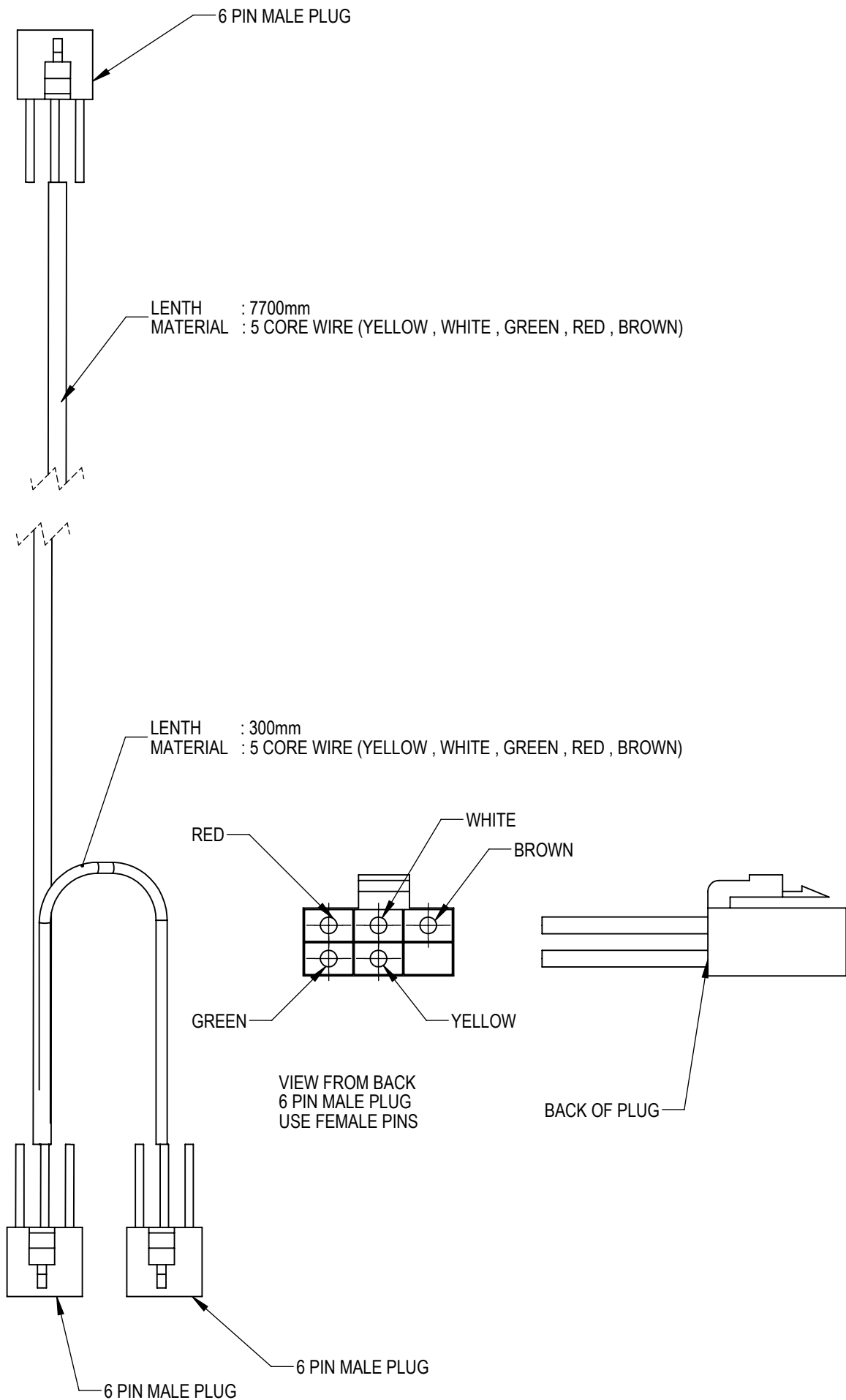
BIN LOOM
5 CORE 7700mm
5 CORE 300mm

LEFT BLINKER LOOM

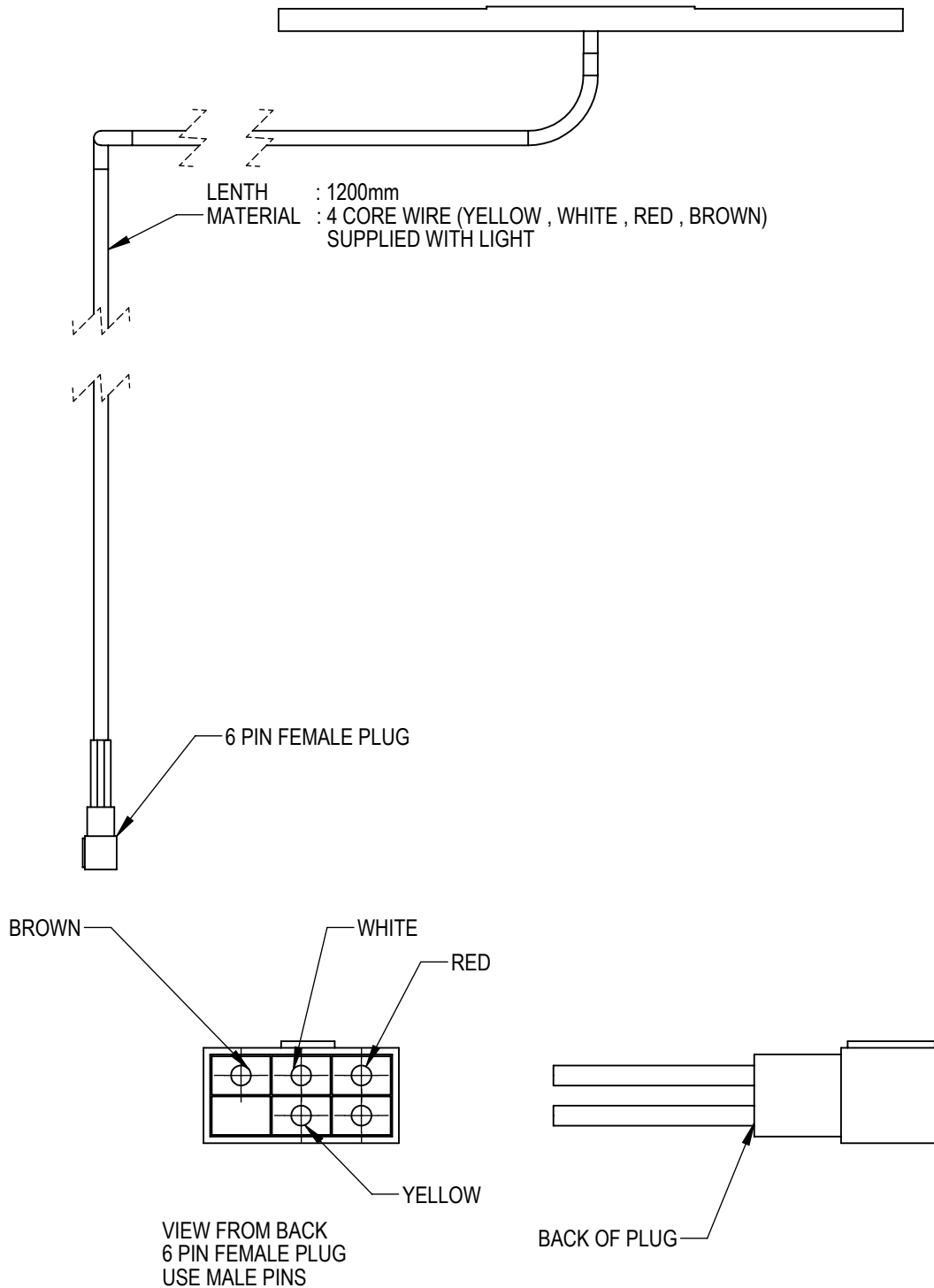
ATTENTION:
BLACK WIRE MUST BE CONECTED
TO EART TERMINAL ON REVOLVING
LIGHT TERMINAL

RIGHT BLINKER &
REVOLVING LIGHT LOOM
2 CORE 2700mm
5 CORE 2300MM

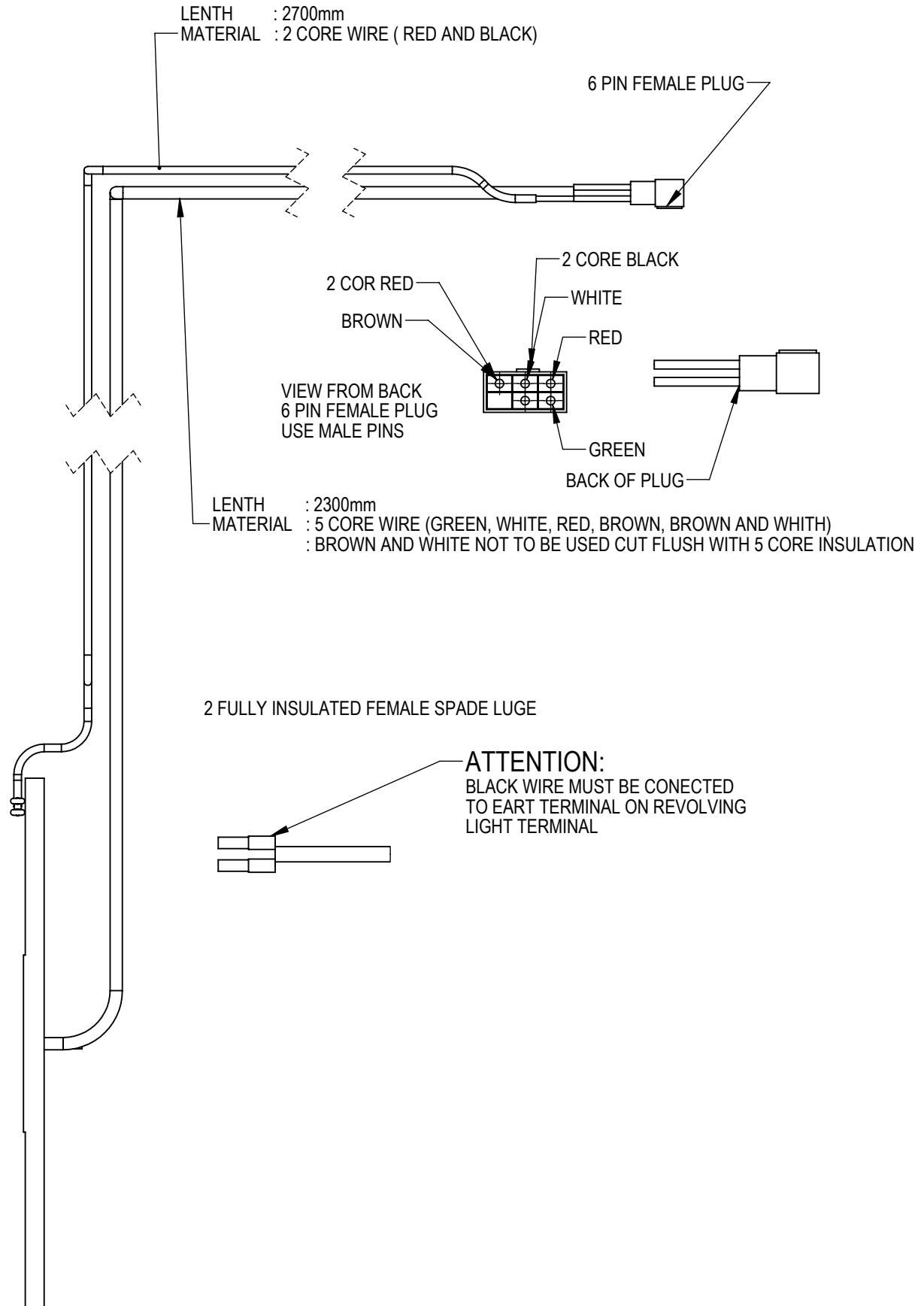
BIN LOOM



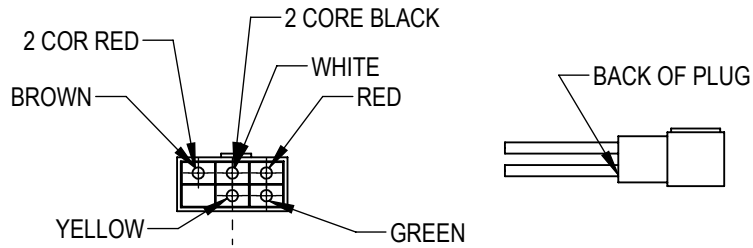
LEFT BLINKER LOOM



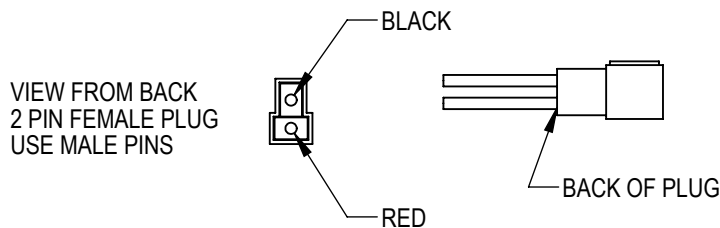
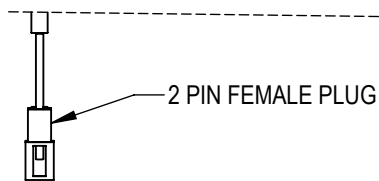
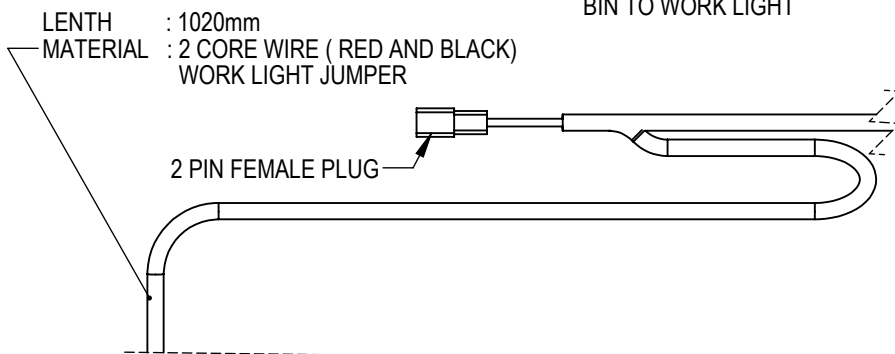
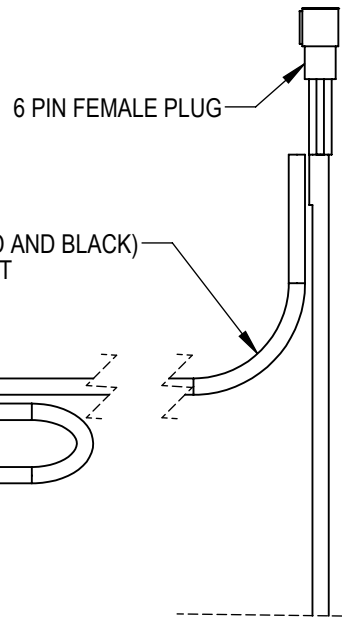
RIGHT BLINKER & REVOLVING LOOM



HITCH & WORK LIGHTS LOOM

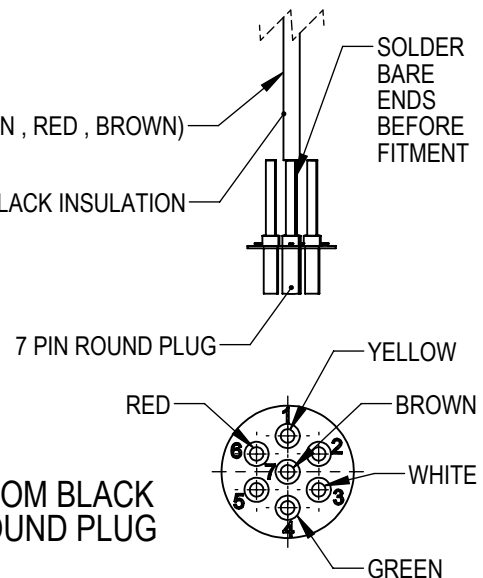


VIEW FROM BACK
6 PIN FEMALE PLUG
USE MALE PINS

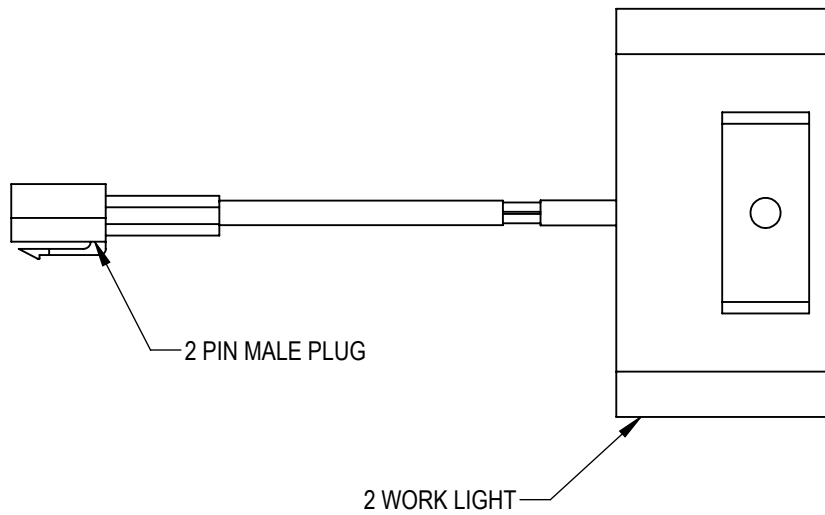


LENTH : 5300mm
MATERIAL : 5 CORE WIRE (YELLOW , WHITE , GREEN , RED , BROWN)
TRACTOR TO BIN WIRE

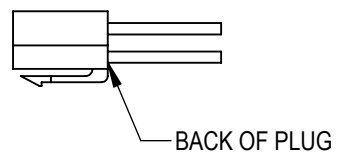
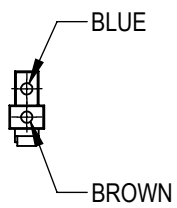
STRIP 30mm OF BLACK INSULATION



WORK LIGHT AND PLUG



VIEW FROM BACK
2 PIN MALE PLUG
USE FEMALE PINS

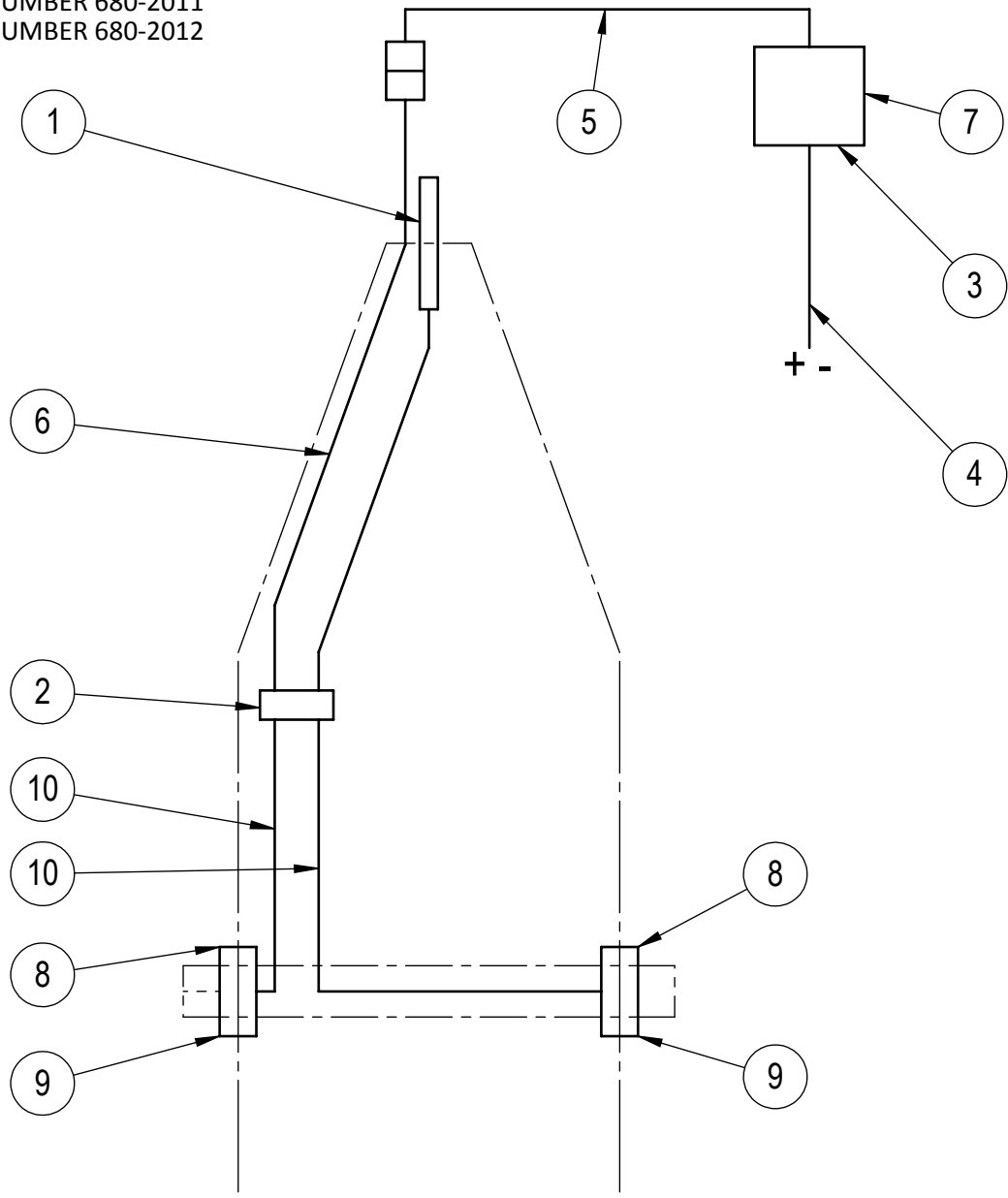


LOAD CELL DIAGRAM

NOTE:

18 & 25 TON KIT NUMBER 680-2011

30 & 35 TON KIT NUMBER 680-2012



ITEM NO.	PART NUMBER	DESCRIPTION	18 & 25 TON QTY	30 & 35 TON QTY
1	680-4100	LOAD CELL -3.75 SB-16' (3.0 HITCH)	1	1
2	680-4101	J-BOX LEVER-NUT 4 PT	1	1
3	680-4102	GT400 SER-IND	1	1
4	680-4103	CABLE POWER 15FT 4-WIRE	1	1
5	680-4104	CABLE -J-BOX EXT 30FT	1	1
6	680-4105	CABLE J-BOX 30'	1	1
7	680-4106	BRKT-ROBO IND MTD	1	1
8	680-4274	J601 LOAD CELL	2	-
9	680-4239	J750 LOAD CELL	-	2
10	680-4290	LOAD CELL TO J-BOX WIRE 6.8 METER	2	2