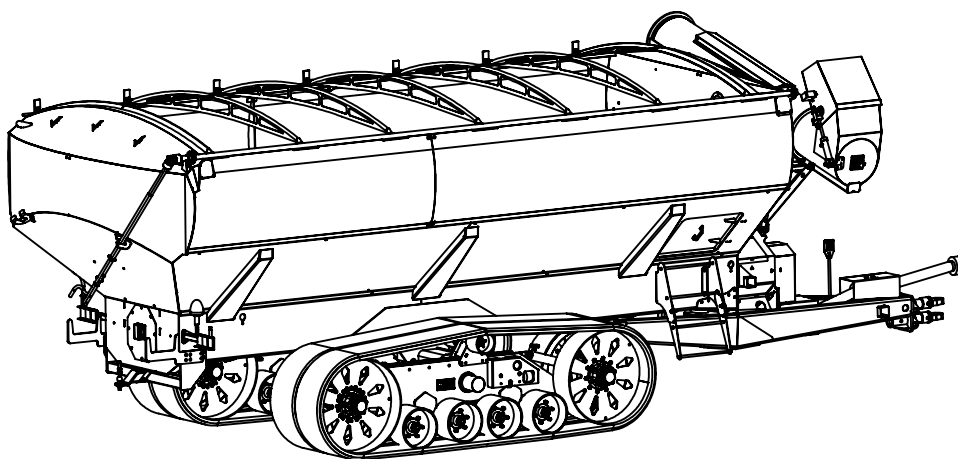
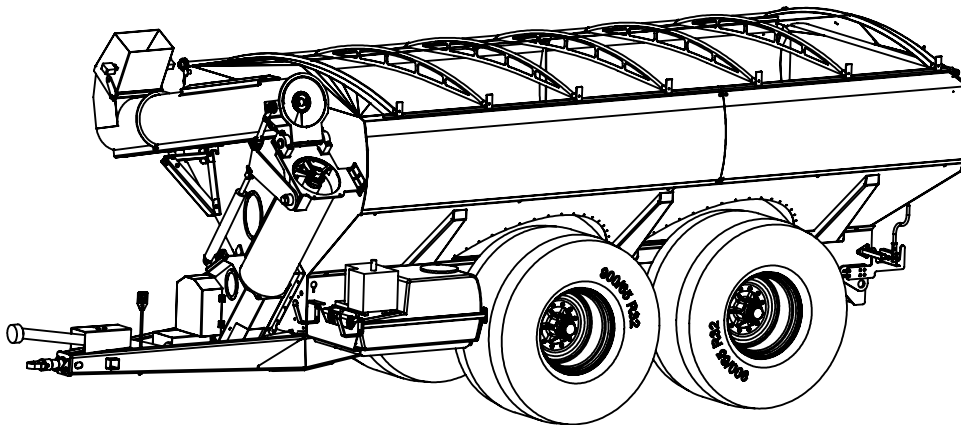
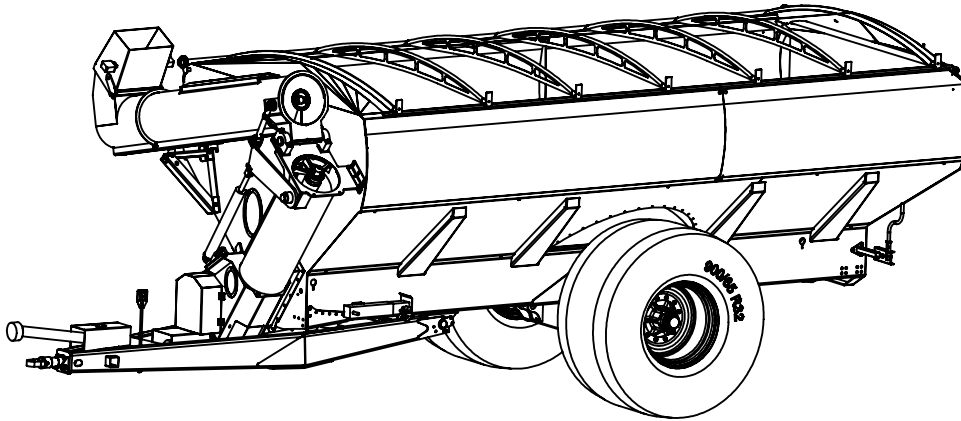


DAVIMAC CHASER BIN PARTS LIST

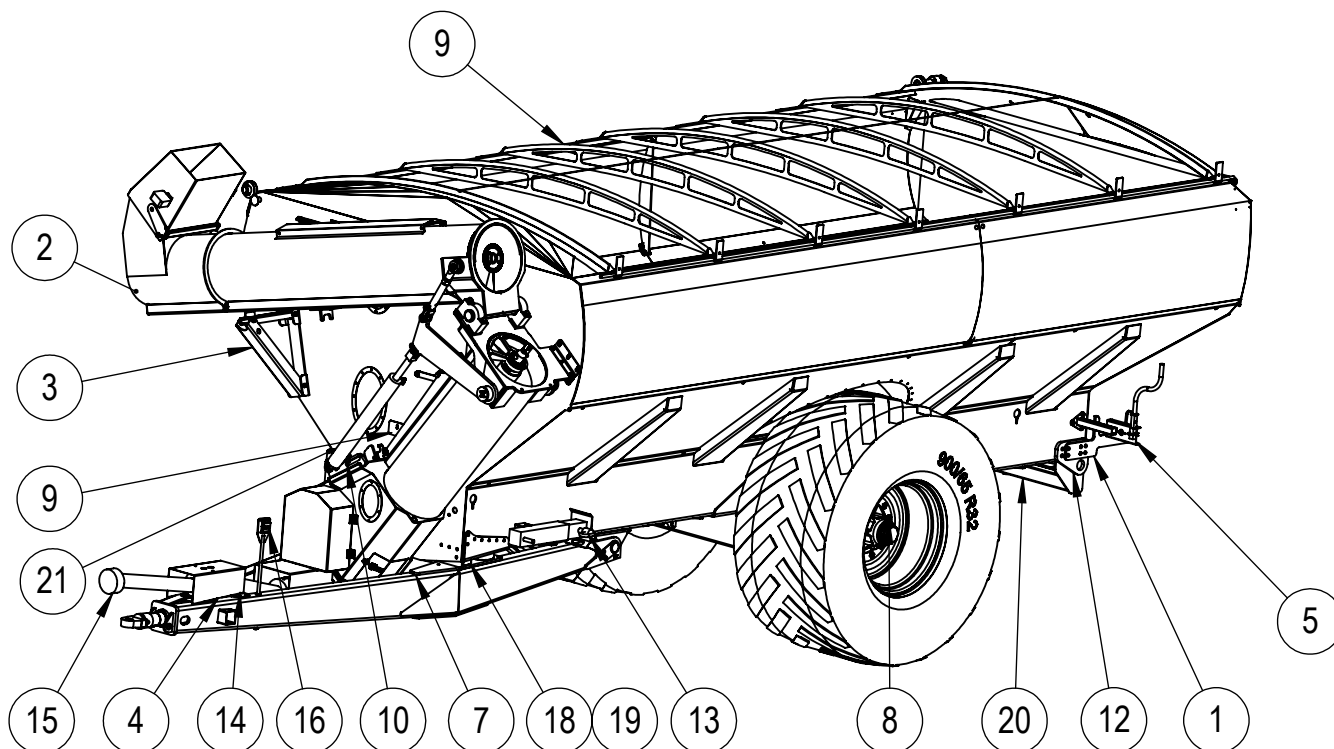


FROM : CB14517 TO CB16617

DAVIMAC
MANUFACTURING

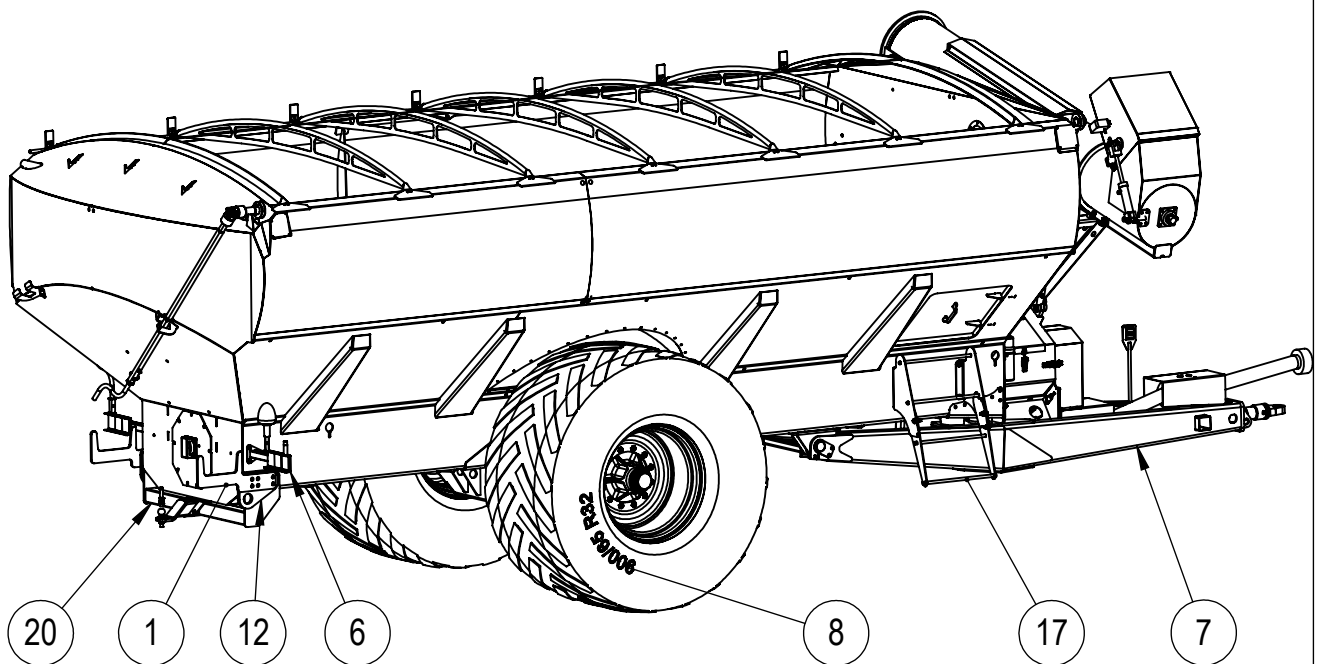
DAVIMAC PTY LTD
55 WELINGTON STREET
MOLONG NSW

CHASER BIN - RIGHT



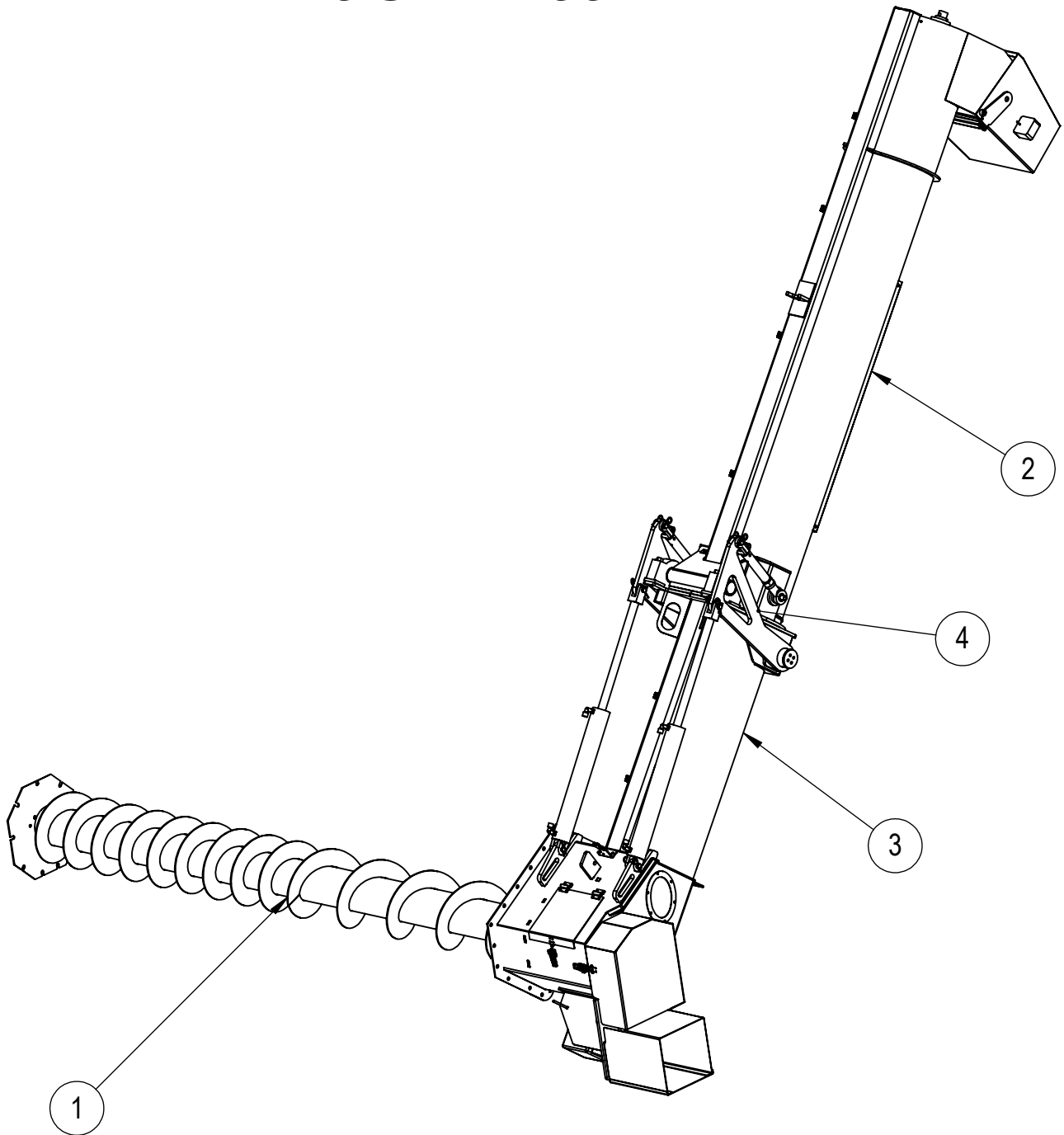
ITEM NO.	PART NUMBER	DESCRIPTION	QTY	PAGE
1	3105030-06	REAR CHAIN BRACKET	2	
2	0207300	AUGER ASSEMBLY	1	4-14
3	3107040	STANDARD AUGER SUPPORT	1	15
4	0207306 0207307	PTO CONNECTOR HYDRAULIC DRIVE	1	16
5	0219002	TAIL LIGHT ASSEMBLY LH	1	17
6	0219005	TAIL LIGHT ASSEMBLY RH	1	17
7	3102002	HITCH ASSEMBLY	1	18-19
8	3104006	AXLE	1	20-24
9	3105030	BIN ASSEMBLY	1	25-26
10	3131018	HYDRAULIC HOSES	1	27-32
11	3119001	BIN WIRING DIAGRAM	1	39-43
12	0202029-09	REAR TOW LUG	2	-
13	0217001	JACK STAND - B9696	1	-
14	0220022	REAR PTO SHAFT	1	-
15	0220031	FRONT PTO SHAFT	1	-
16	0220055	POGO STICK BOLTED ASSEMBLY	1	-
17	0220056	STEP BOLTED ASSEMBLY	1	-
18	0220062-01	110mm RUBBER CUSHION	4	-
19	0220062-02	50mm RUBBER CUSHION	4	-
20	3103001	LIGHT DUTY REAR TOW BARE	1	-
21	202-0099	PLASTIC DOCK HOLDER	1	-

CHASER BIN - LEFT



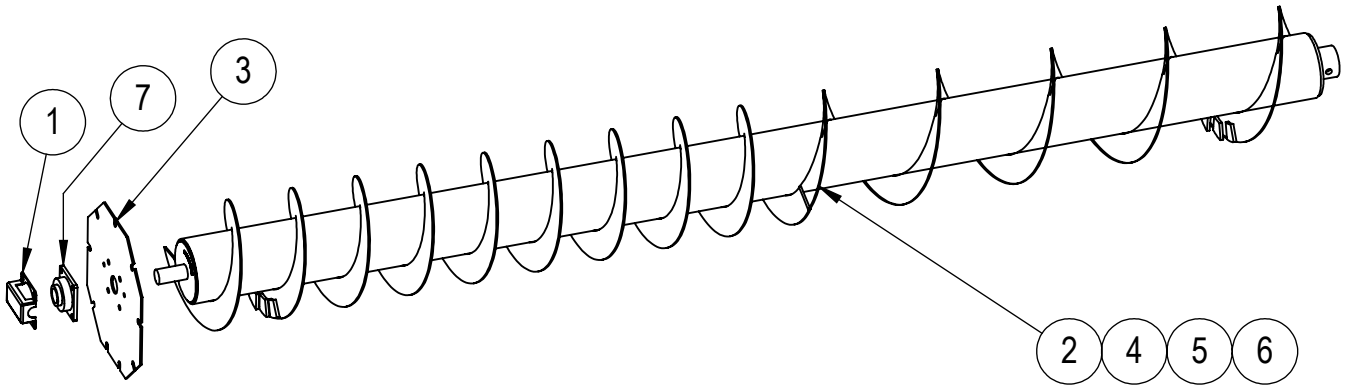
ITEM NO.	PART NUMBER	DESCRIPTION	QTY	PAGE
1	3105030-06	REAR CHAIN BRACKET	2	
2	0207300	AUGER ASSEMBLY	1	4-14
3	3107040	STANDARD AUGER SUPPORT	1	15
4	0207306 0207307	PTO CONNECTOR HYDRAULIC DRIVE	1	16
5	0219002	TAIL LIGHT ASSEMBLY LH	1	17
6	0219005	TAIL LIGHT ASSEMBLY RH	1	17
7	3102002	HITCH ASSEMBLY	1	18-19
8	3104006	AXLE	1	20-24
9	3105030	BIN ASSEMBLY	1	25-26
10	3131018	HYDRAULIC HOSES	1	27-32
11	3119001	BIN WIRING DIAGRAM	1	39-44
12	0202029-09	REAR TOW LUG	2	-
13	0217001	JACK STAND - B9696	1	-
14	0220022	REAR PTO SHAFT	1	-
15	0220031	FRONT PTO SHAFT	1	-
16	0220055	POGO STICK BOLTED ASSEMBLY	1	-
17	0220056	STEP BOLTED ASSEMBLY	1	-
18	0220062-01	110mm RUBBER CUSHION	4	-
19	0220062-02	50mm RUBBER CUSHION	4	-
20	3103001	LIGHT DUTY REAR TOW BARE	1	-
21	202-0099	PLASTIC DOCK HOLDER	1	-

AUGER ASSEMBLY



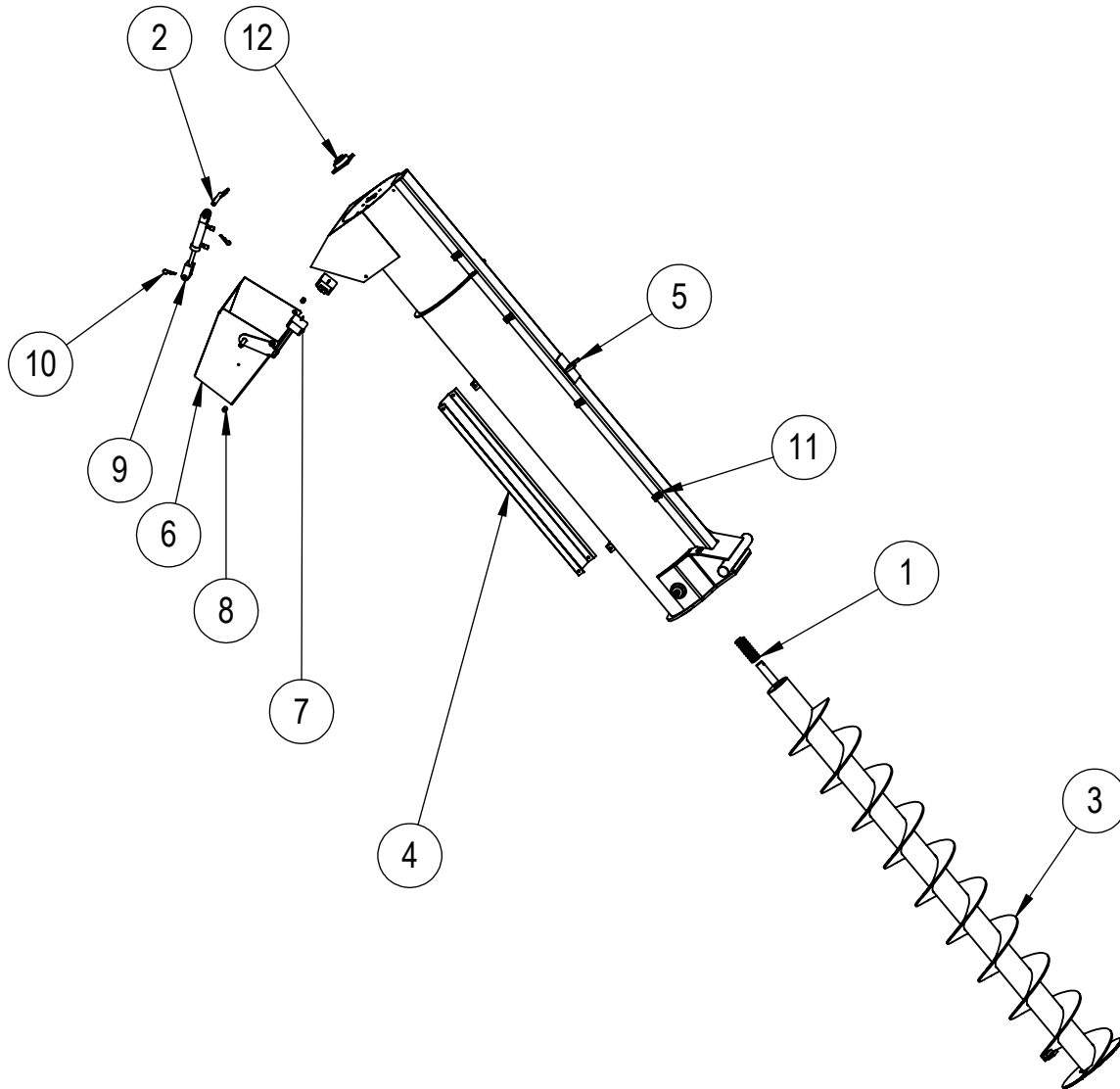
ITEM NO.	PART NUMBER	DESCRIPTION	QTY	PAGE
1	3131004	CROSS AUGER	1	5
2	3131005	UPPER AUGER ASSEMBLY	1	6
3	3131006	LOWER AUGER AND ATTACHMENTS	1	7-8
4	3131022	HYDRAULIC CYLINDER	1	9-10

CROSS AUGER



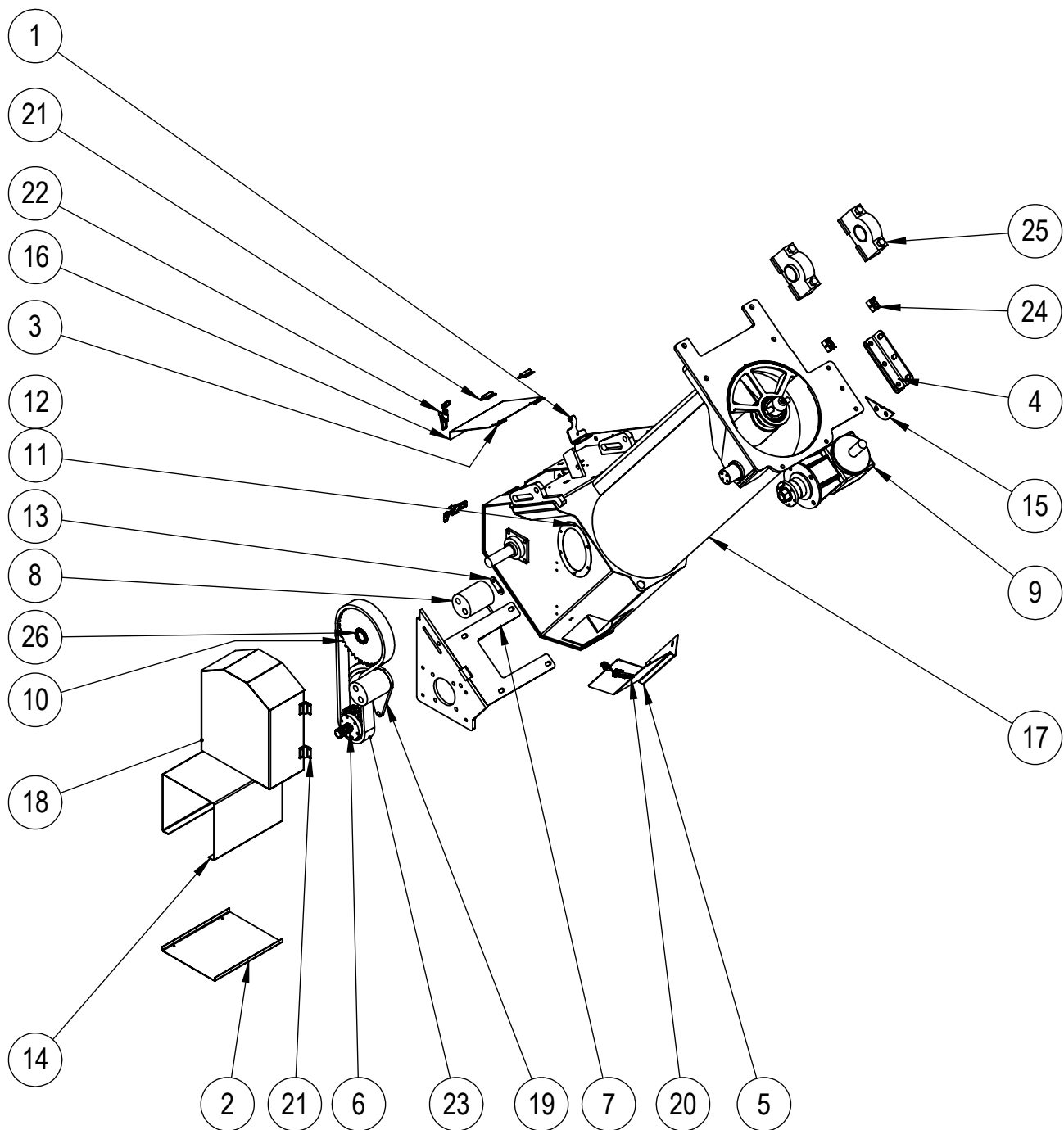
ITEM NO.	PART NUMBER	DESCRIPTION	QTY.	PAGE
1	0207020-05	SHAFT PROTECTION COVER	1	-
2	0207308	30 TON CROSS AUGER ASSEMBLY	1	-
3	0207308-04	AUGER END PLATE	1	-
4	0207310	25 TON CROSS AUGER ASSEMBLY	1	-
5	0207311	18 TON CROSS AUGER ASSEMBLY	1	-
6	0207312	35 TON CROSS AUGER ASSEMBLY	1	-
7	UCF210	UCF210	1	-

UPPER AUGER ASSEMBLY



ITEM NO.	PART NUMBER	DESCRIPTION	QTY	PAGE
1	0207019-08	UPPER AUGER SPRING	1	-
2	0207030	UPPER CYLINDER LUG	1	-
3	0207222	UPPER AUGER STANDARD	1	-
4	0207300-04	AUGER GUARD	1	-
5	0207317	UPPER AUGER BODY	1	-
6	0207318	SPOUT WELDED ASSEMBLY	1	-
7	0219001	48W 300 LUM3NS 16 LED FLOOD WORK LIGHT	2	-
8	0220006-02	SPACER	2	-
9	2101002	UPPER AUGER CYLINDER	1	-
10	2509002-02	4mm R CLIP	2	-
11	RCD-15	PIPE CLAMP	4	-
12	UCF210	UCF210	1	-

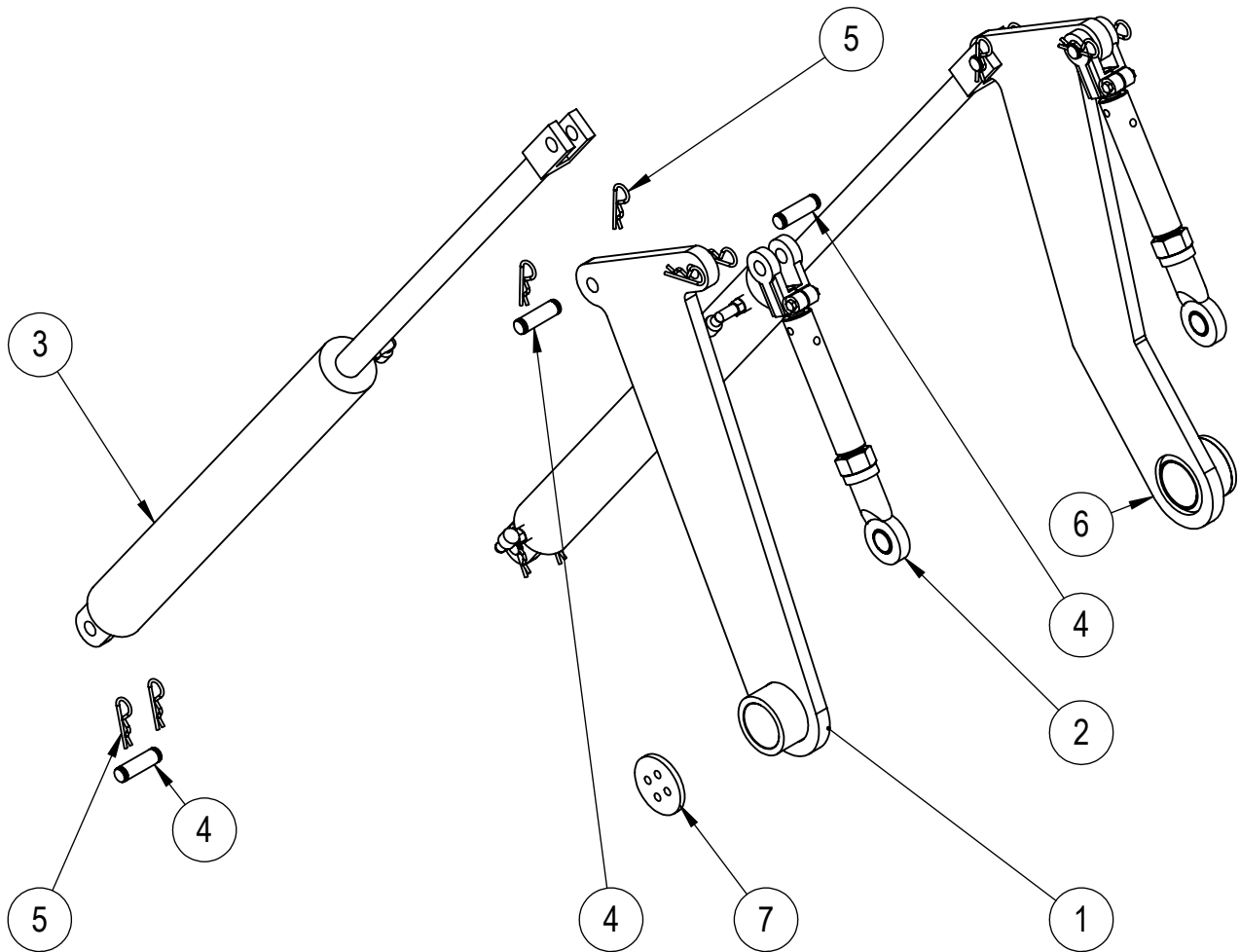
LOWER AUGER AND ATTACHMENTS



MATERIAL LIST FOR LOWER AUGER AND ATTACHMENTS

ITEM NO.	PART NUMBER	DESCRIPTION	QTY	PAGE
1	0207020-02	HYDRAULIC REGULATOR MOUNTING BRACKET	1	-
2	0207020-04	CHAIN PROTECTION COVER LID	1	-
3	0207020-10	HINGE SPACER	2	-
4	0207021-09	MOUNTING PLATE	2	-
5	0207021-13	DOOR MOUNTING PLATE	1	-
6	0207024	DRIVE SPROCKET ASSEMBLY	1	-
7	0207025	GEARBOX MOUNTING WELDED ASSEMBLY	1	-
8	0207034-01	NYLON RH DISCHARGE	1	-
9	0207077	GEARBOX	1	11
10	0207087	SPROCKET MACHINING	1	-
11	0207136	WINDOW PERSPEX 6MM THICK (AUGER)	1	-
12	0207200-05	WINDOW HOLDING RING	2	-
13	0207200-07	RH DISCHARGE CHAIN TENSIONER BACK PLATE	1	-
14	0207300-01	CHAIN PROTECTION COVER	1	-
15	0207300-02	REAR AUGER COVER PLATE	1	-
16	0207300-03	INSPECTION HATCH	1	-
17	0207402	LOWER AUGER ASSEMBLY	1	12
18	0207304	UPPER CHAIN COVER	1	-
19	0207305	LH DISCHARGE CHAIN TENSIONER ASSEMBLY	1	11
20	0207309	INSPECTION DOOR ASSEMBLY	1	-
21	2501001	HINGE – BUTT	4	-
22	2510001	LARGE LATCH SH 28	2	-
23	HKK 16B-2	CHAIN 1876 Lg	1	-
24	RCD-15	PIPE CLAMP	2	-
25	UCSBX15	PILLOW BLOCK	2	-
26	Z6-50X80	Z6 SERIES LOCKING ASSEMBLY	1	-

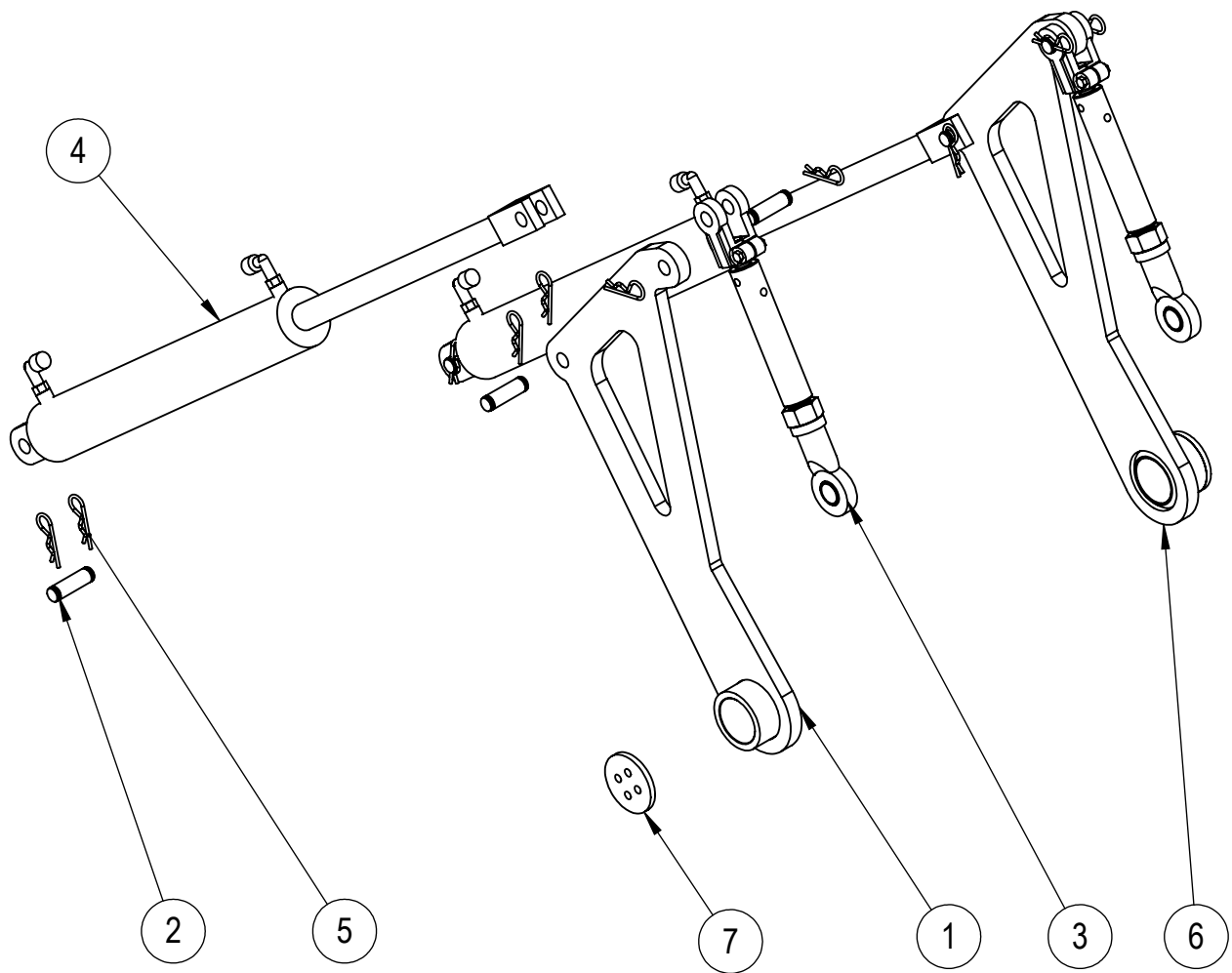
HYDRAULIC CYLINDER 30"



FOR SERIAL NUMBERS CB 14517, CB14617, CB15017 TO CB15317 AND CB15617

ITEM NO.	PART NUMBER	DESCRIPTION	QTY	PAGE
1	0207314	AUGER LEVER	1	-
2	0207315	AUGER ADJUSTABLE LINKAGE	2	13
3	2101019	HYDRAULIC CYLINDER 3"BORE X 30" STROKE TYPE B	2	-
4	2508003	PIN HYD CYL - DIA 25.4mm	6	-
5	2509002-03	5mm R CLIP	12	-
6	0207321	AUGER LEVER	1	
7	0207300-06		2	

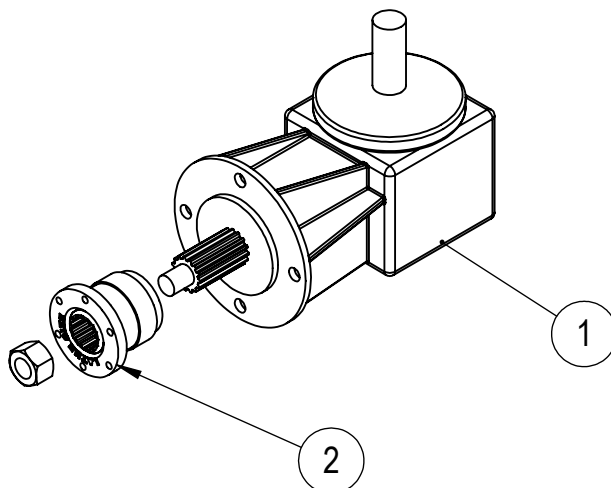
HYDRAULIC CYLINDER 24"



FOR SERIAL NUMBERS CB 14717 TO CB14917, CB15417, CB15517 AND CB15717AND LATER

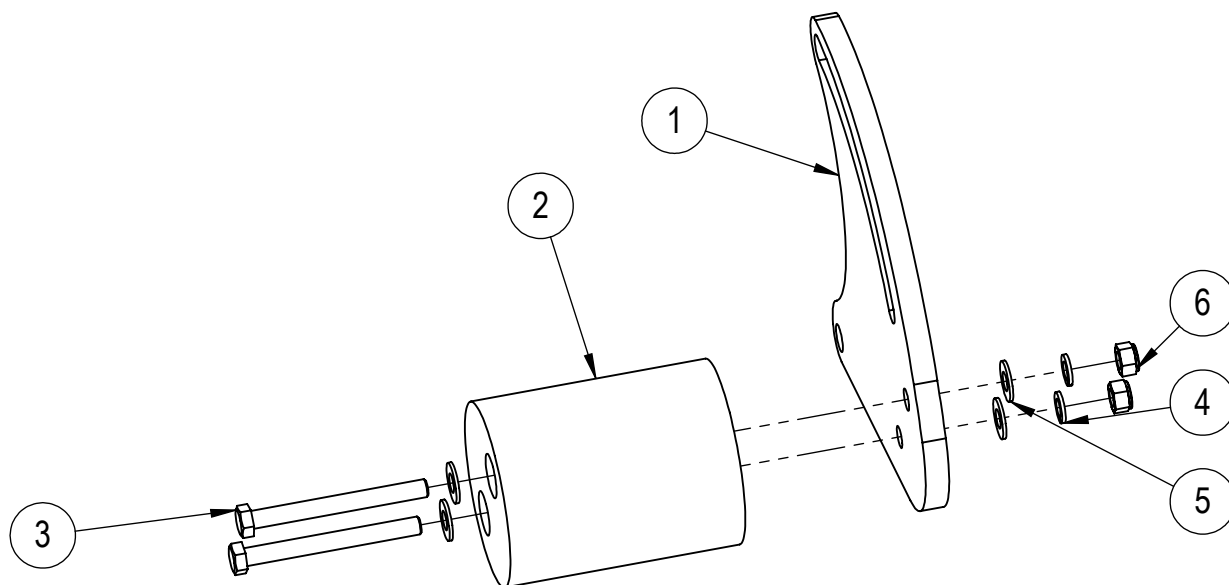
ITEM NO.	PART NUMBER	DESCRIPTION	QTY	PAGE
1	0207414	AUGER LEVER	1	
2	2508003	PIN HYD CYL - DIA 25.4mm	6	
3	0207315	AUGER ADJUSTABLE LINKAGE	2	13
4	2101003	HYDRAULIC CYLINDER 2.5"BORE X 24" STROKE	2	
5	2509002-03	5mm R CLIP	12	
6	0207415	AUGER LEVER	1	
7	0207300-06		2	

GEARBOX



ITEM NO.	PART NUMBER	DESCRIPTION	QTY	PAGE
1	2410001	GEARBOX KIT	1	-
2	0207313	GEARBOX DRIVE SLEEVE ASSY	1	-
3	2410001-01	NUT	1	

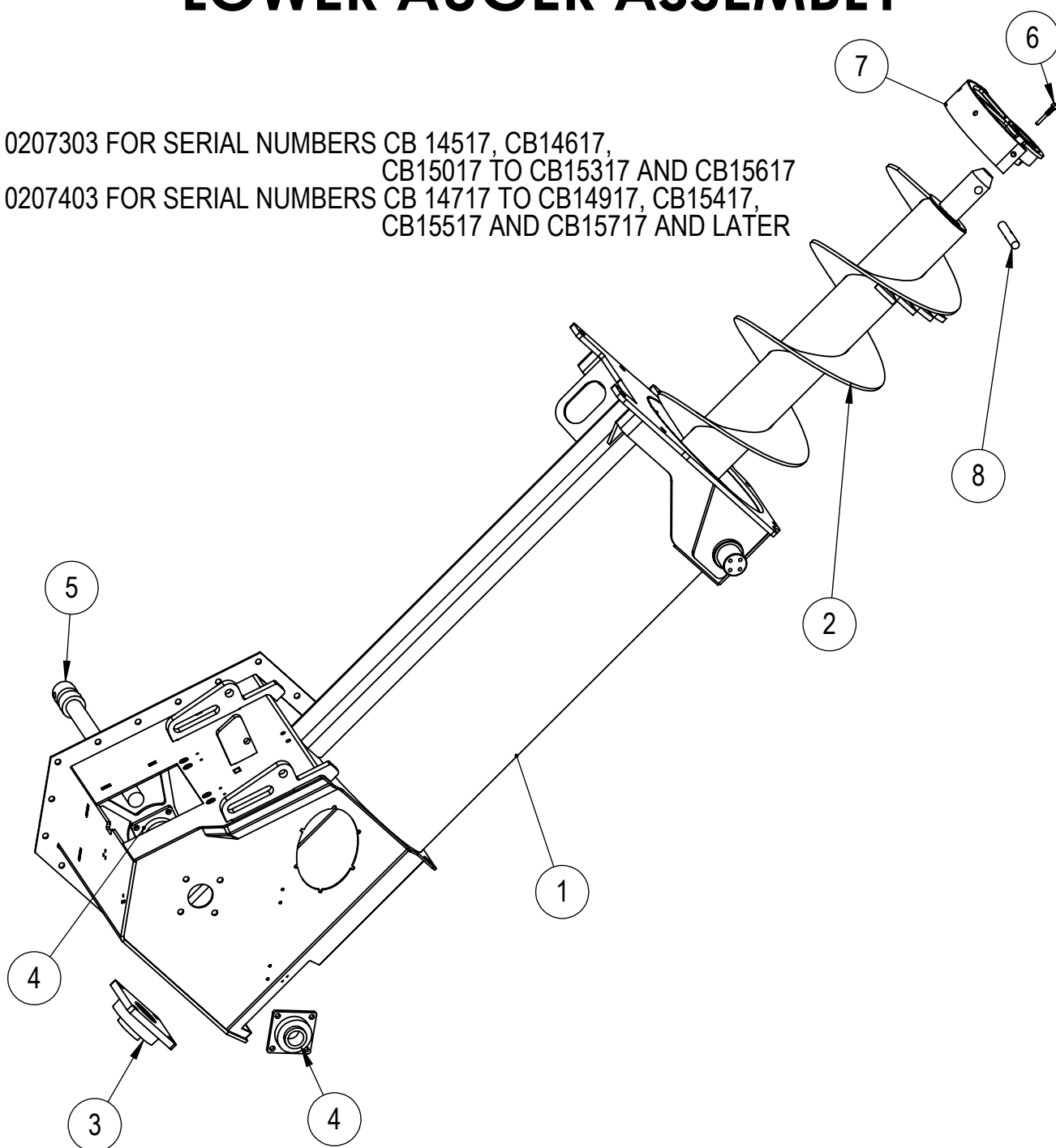
CHAIN TENSIONER ASSEMBLY



ITEM NO.	DESCRIPTION	QTY	PART NUMBER	PAGE
1	DRIVE CHAIN TENSIONER PLATE	1	0207305-01	-
2	NYLON	1	0207034-01	-
3	M12 x 120 BOLT GRAD 8.8 ZINC PLATED	2	1012244601	-
4	M12 SPRING WASHER ZINC PLATED	2	4012000000	-
5	M12 FLAT WASHER ZINC PLATED	4	3012000000	-
6	M12 HEX NYLOCK NUT ZINC PLATED	2	5012004601	-

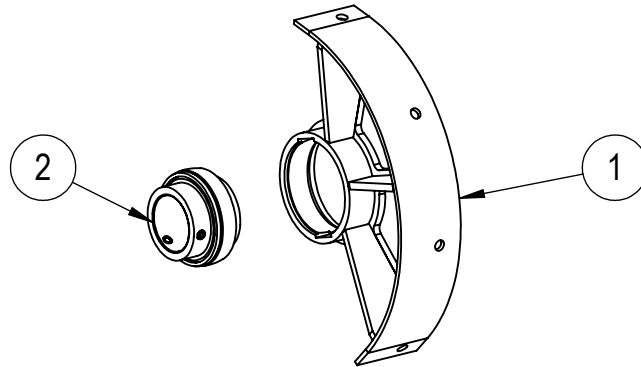
LOWER AUGER ASSEMBLY

0207303 FOR SERIAL NUMBERS CB 14517, CB14617,
CB15017 TO CB15317 AND CB15617
0207403 FOR SERIAL NUMBERS CB 14717 TO CB14917, CB15417,
CB15517 AND CB15717 AND LATER



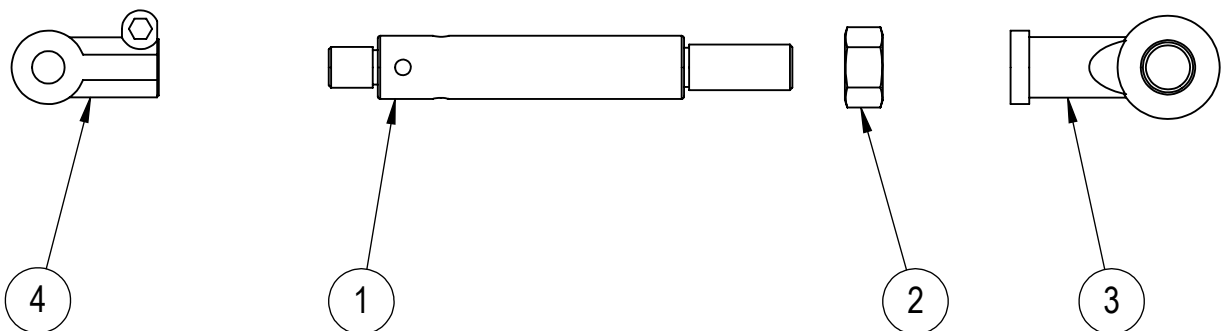
ITEM NO.	PART NUMBER	DESCRIPTION	QTY	PAGE
1	0207303 0207403	LOWER AUGER BODY	1	
2	0207206	LOWER AUGER	1	
3	2601009	FLANGE BEARING UCF 313	1	
4	UCF210	UCF210	2	
5	0207095	AUGER DRIVE SHAFT WELDED ASSEMBLY	1	
6	0207090	LOCATING PIN	1	
7	0207135	AUGER CENTRALISING DEVICE	1	
8	0207026-06	DRIVE PIN	1	

AUGER CENTRALISING DEVICE



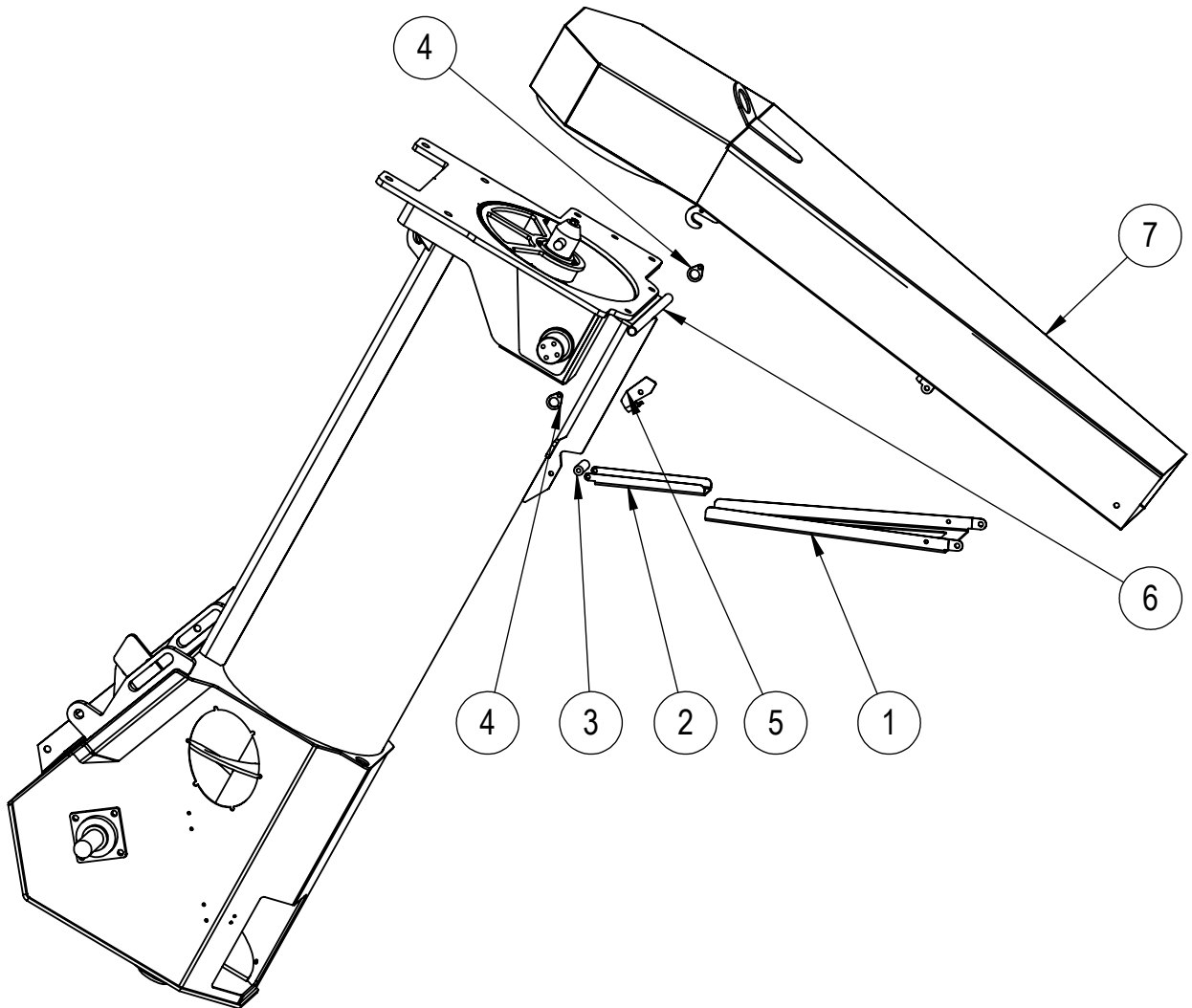
ITEM NO.	PART NUMBER	DESCRIPTION	QTY	PAGE
1	0207320	CENTRALISING DEVICE WELDED ASSEMBLY	1	-
2	BEARING UC215	BEARING	1	-

AUGER ADJUSTABLE LINKAGE



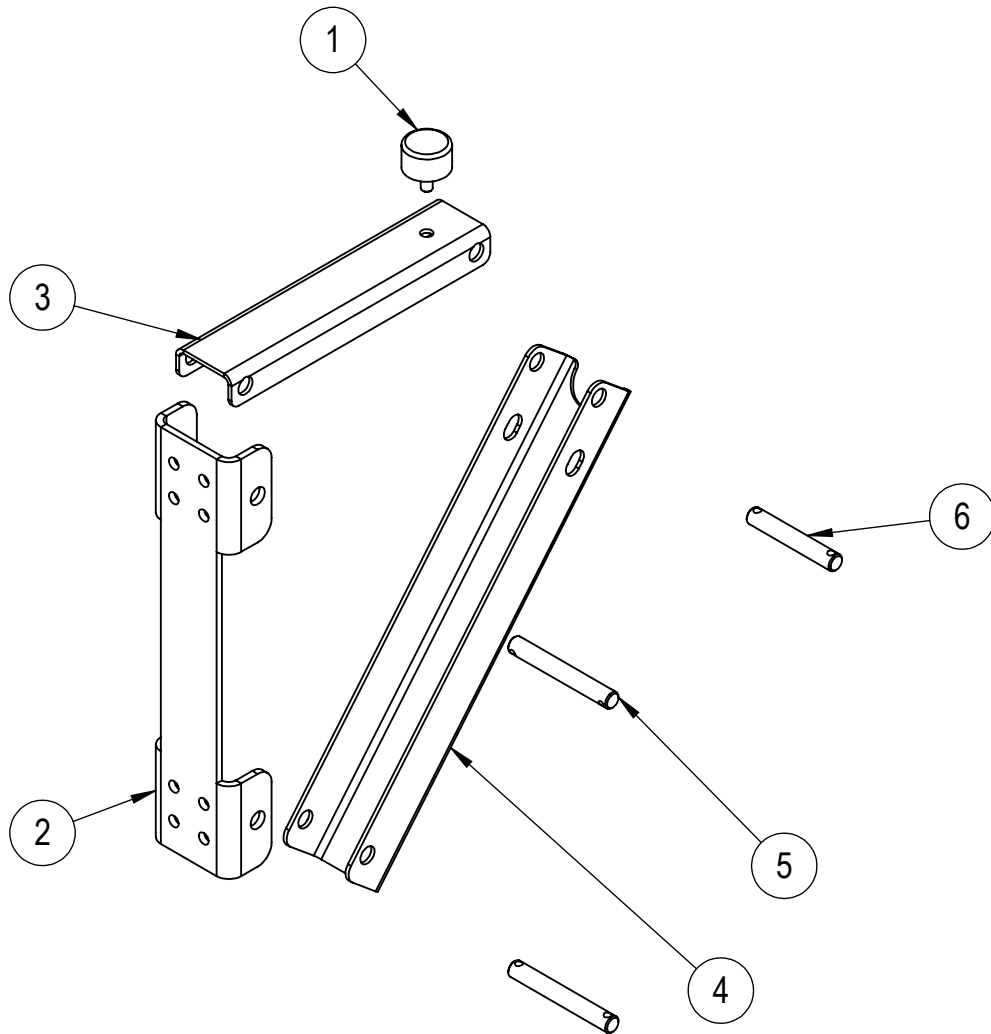
ITEM NO.	PART NUMBER	DESCRIPTION	QTY	PAGE
1	0207315-01	PART FOR ADJUSTABLE LINKAGE	1	-
2	4029011-04	M36 LH NUT	1	-
3	SI35ET	METRIC FEMALE NARROW RODENDS SET	1	-
4	CLEVIS ROD END	CLEVIS ROD END	1	-

HOPPER SPOUT



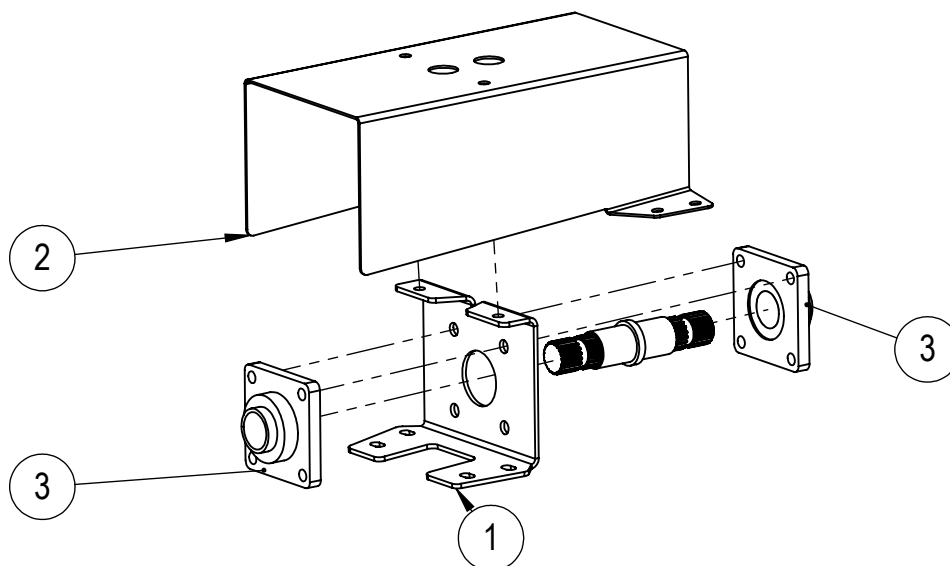
ITEM NO.	PART NUMBER	DESCRIPTION	QTY	PAGE
1	0228001-01	OUTER STAY ARM	1	-
2	0228001-02	INNER STAY ARM	1	-
3	0228001-03	PLASTIC BUSH	1	-
4	0228001-04	STAY ARM MOUNTING BRACKET	2	-
5	0228001-06	CATCH	1	-
6	0228002	SPOUT MOUNTING BRACKET	1	-
7	0228003	HOPPER SPOUT	1	-

STANDARED AUGER SUPPORT



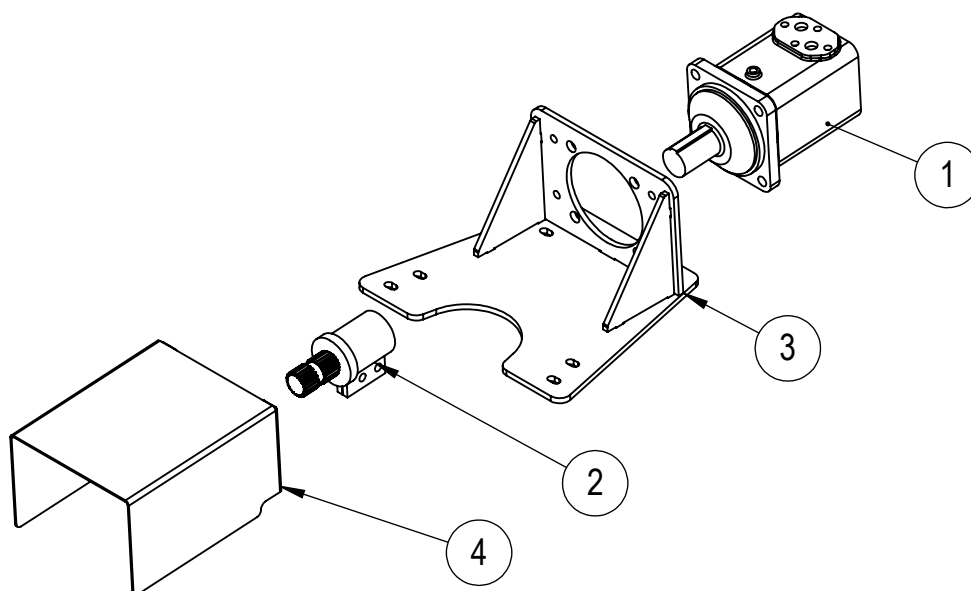
ITEM NO.	PART NUMBER	DESCRIPTION	QTY	PAGE
1	0207214-04	RUBBER STOP	1	
2	3107040-01	VERTICAL SUPPORT	1	
3	3107040-02	HORIZONTAL SUPPORT	1	
4	3107040-03	BRACE	1	
5	3107040-04	AUGER SUPPORT PIN	2	
6	3107040-05	AUGER SUPPORT PIN	1	

PTO CONNECTOR



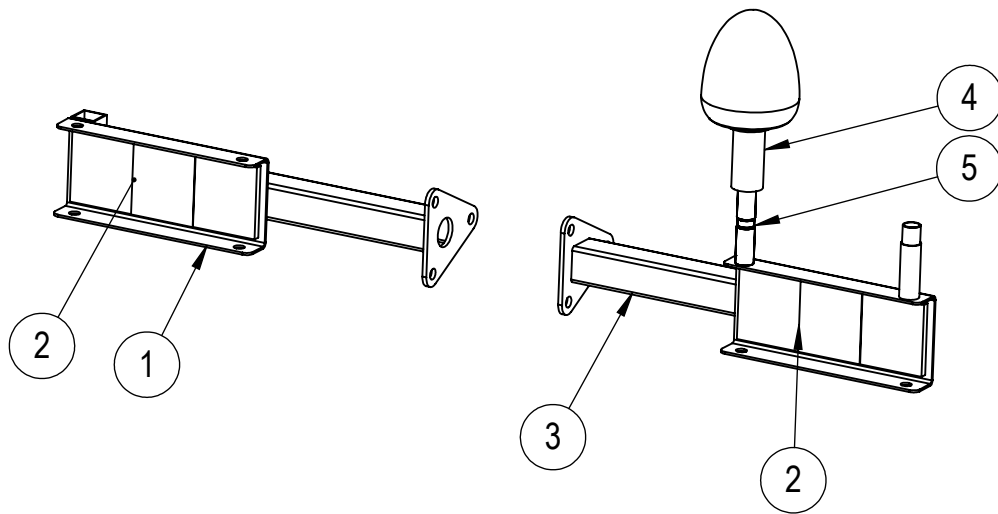
ITEM NO.	PART NUMBER	DESCRIPTION	QTY	PAGE
1	0207306-01	PTO HOUSING	1	
2	0207306-02	PTO GUARD	1	
3	2601002	BEARING – UCF210	2	
4	0207033-04	PTO SPLINE SHAFT	1	

HYDRAULIC DRIVE



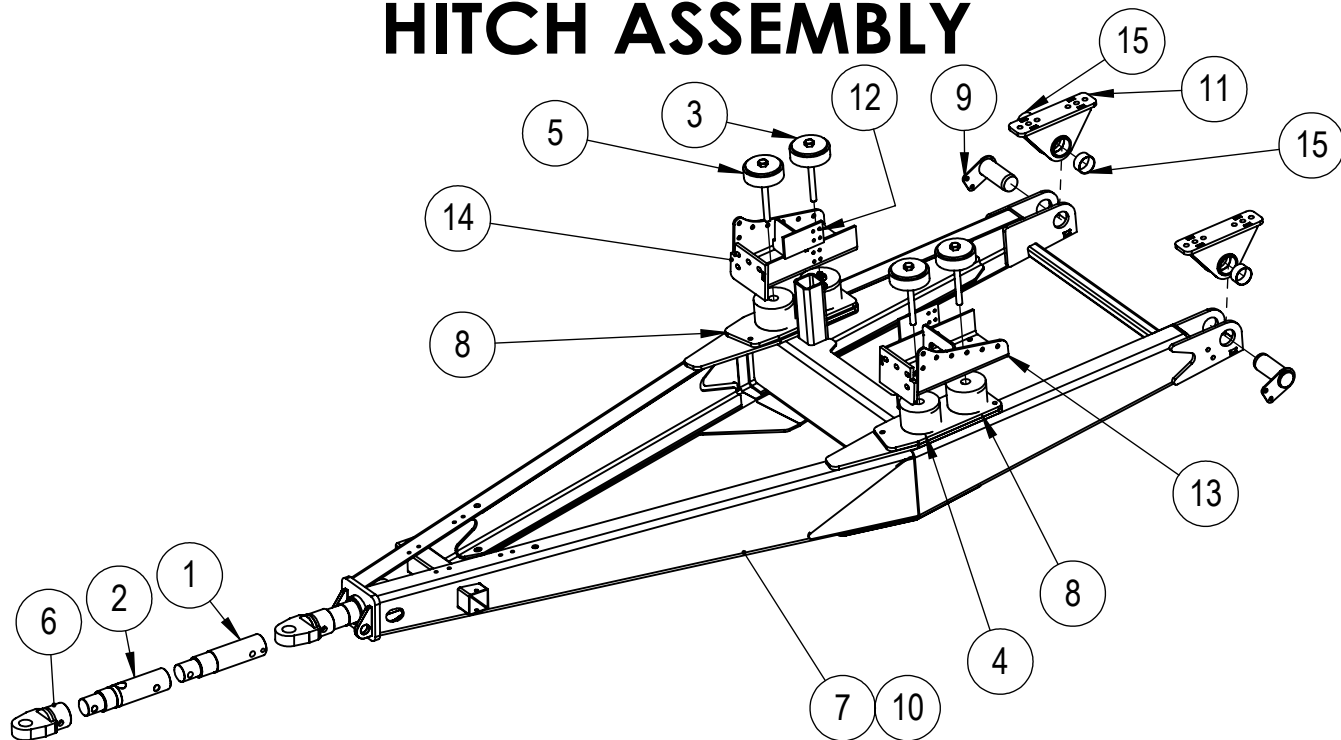
ITEM NO.	PART NUMBER	DESCRIPTION	QTY	PAGE
1	MV 400C	HYDRAULIC MOTOR MV 400C	1	
2	0207092	SPLINE ASSEMBLY	1	
3	0207093	HYDRAULIC MOTOR MOUNTING ASSEMBLY	1	
4	0207091-07	PTO PROTECTION COVER	1	

TAIL LIGHT ASSEMBLY



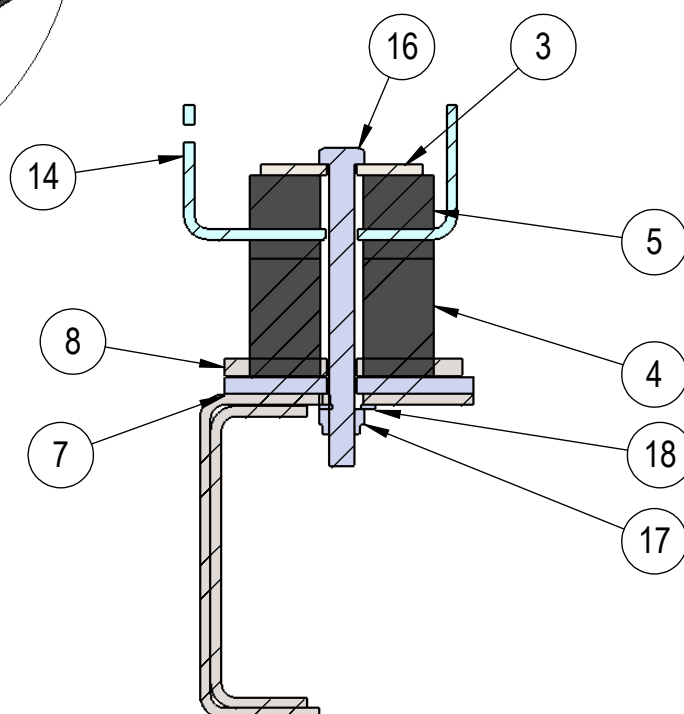
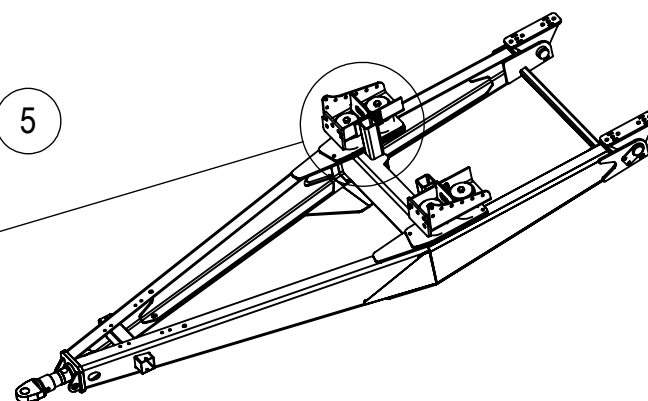
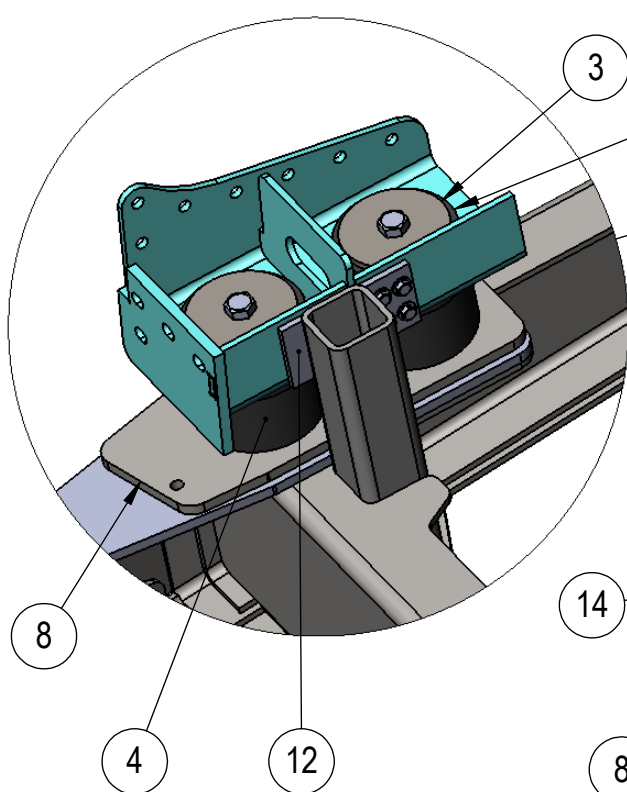
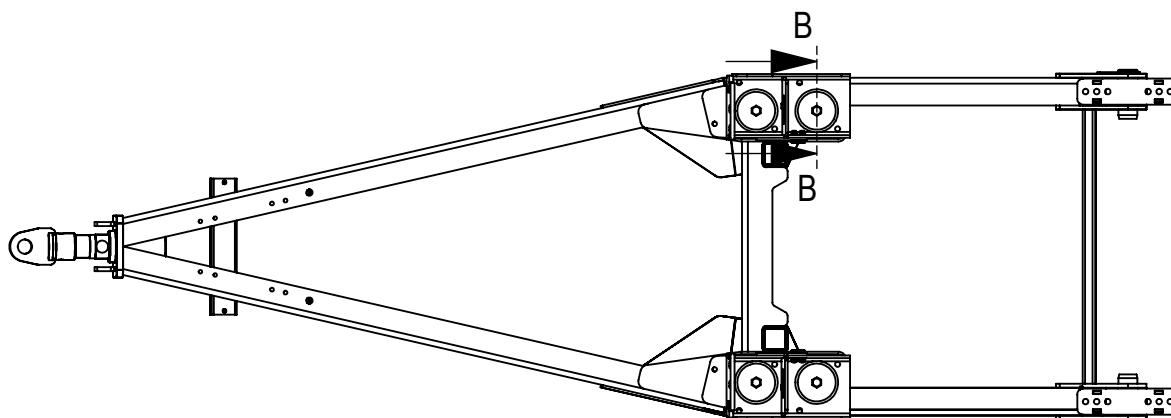
ITEM NO.	PART NUMBER	DESCRIPTION	QTY	PAGE
1	0219007	TAIL LIGHT WELDED ASSEMBLY LH	1	-
2	23-001	REFLECTORS	2	-
3	0219008	TAIL LIGHT WELDED ASSEMBLY RH	1	-
4	23-003	FLEXIBLE POLE MOUNTED BEACON	1	-
5	23-005	MOUNTING SOCKET	1	

HITCH ASSEMBLY

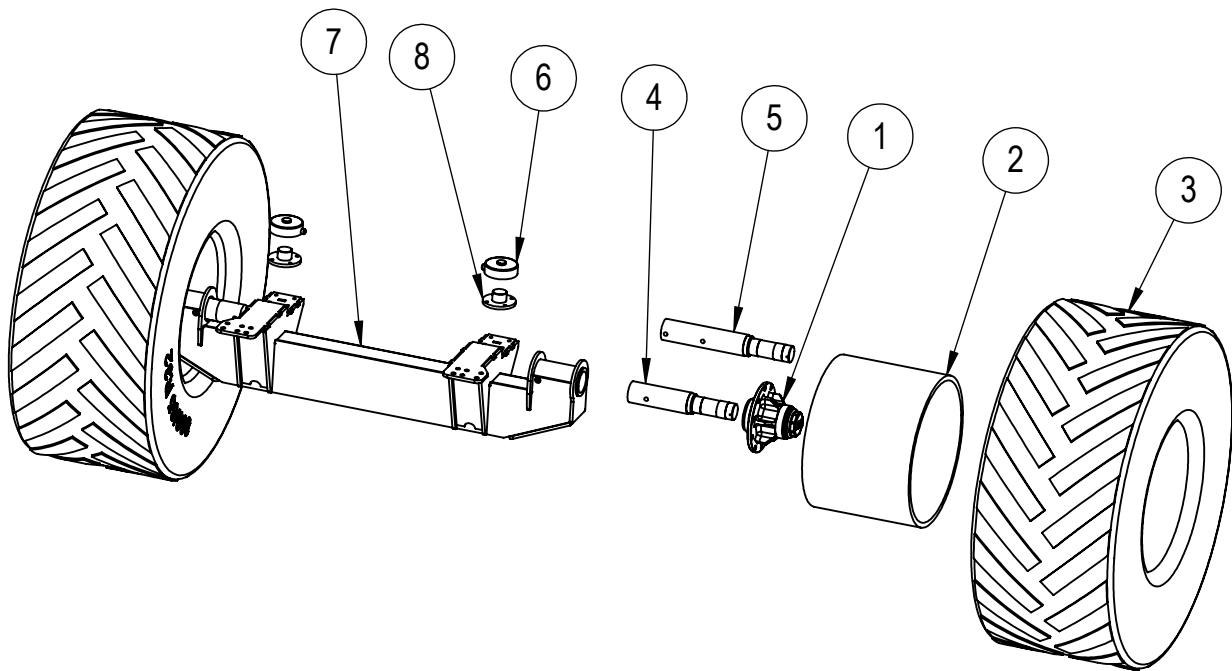


ITEM NO.	PART NUMBER	DESCRIPTION	QTY	PAGE
1	0202009-01	TOW SHANK	1	-
2	0202009-10	LOAD CELL	1	-
3	0202020-01	RUBBER HITCH SUSPENSION PLATE	2/4	-
4	0220062-01	110mm RUBBER CUSHION	2/4	-
5	0220062-02	50mm RUBBER CUSHION	2/4	-
6	0231040	TOW EYES	1	-
7	3102002	30 AND 35 TON HITCH	1	-
8	3102002-19	30 AND 35 TON SPACER FOR RUBBER CUSHION	2	-
9	3102005	HINGE PIN	2	-
10	3102006	18 AND 25 TON HITCH	1	-
11	3102007	HINGE BRACKET WELDED ASSEMBLY	2	-
12	3105026-11	BLACK NYLON WEAR PLATE	2	-
13	3105076	LH 30 AND 35 TON RUBBER CUSHION STOP	1	-
14	3105077	RH 30 AND 35 TON RUBBER CUSHION STOP	1	-
15	GSM-7580-40	BUSH	4	-
16	1024568801	M24 x 280 BOLT GRADE 8.8 ZINC PLATED	4	
17	5024008801	M24 HEX NYLOCK NUT GRADE 8.8 ZINC PLATED	4	
18	3024000000	M24 FLAT WASHER ZINC PLATED	4	
19	1012084601	M12 x 40 BOLT GRAD 8.8 ZINC PLATED	8	
20	5012004601	M12 HEX NYLOCK NUT ZINC PLATED	8	
21	3012000000	M12 FLAT WASHER ZINC PLATED	16	

HITCH DETAILS

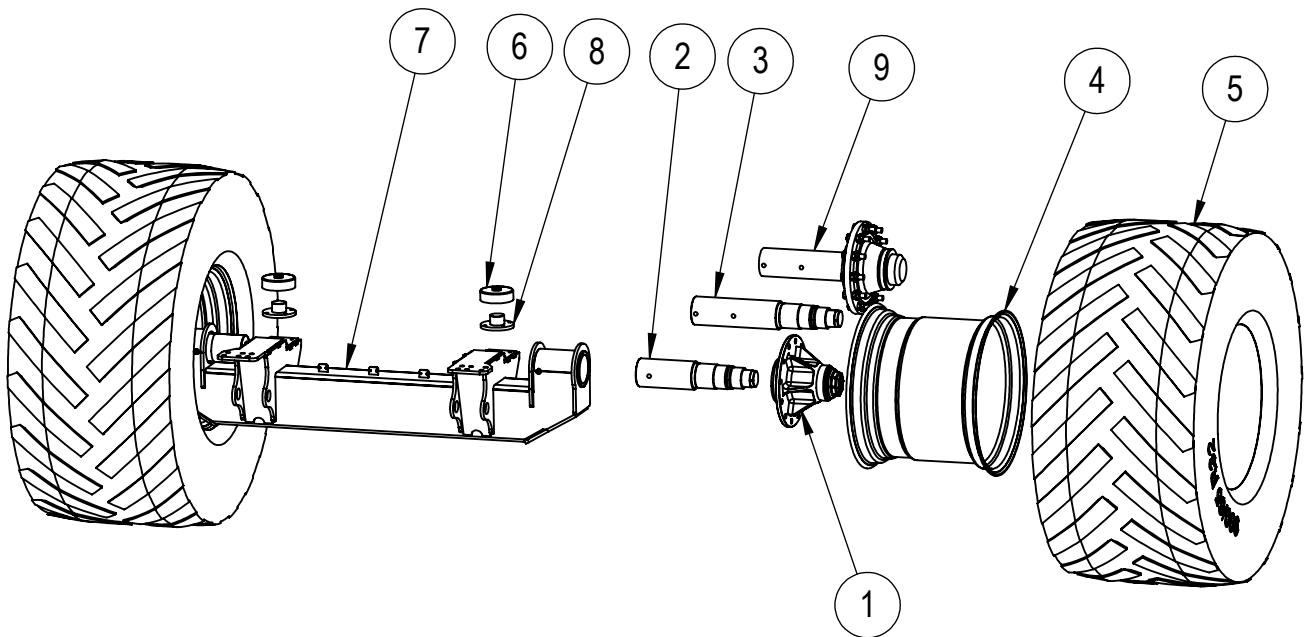


18 AND 25 TON AXLE



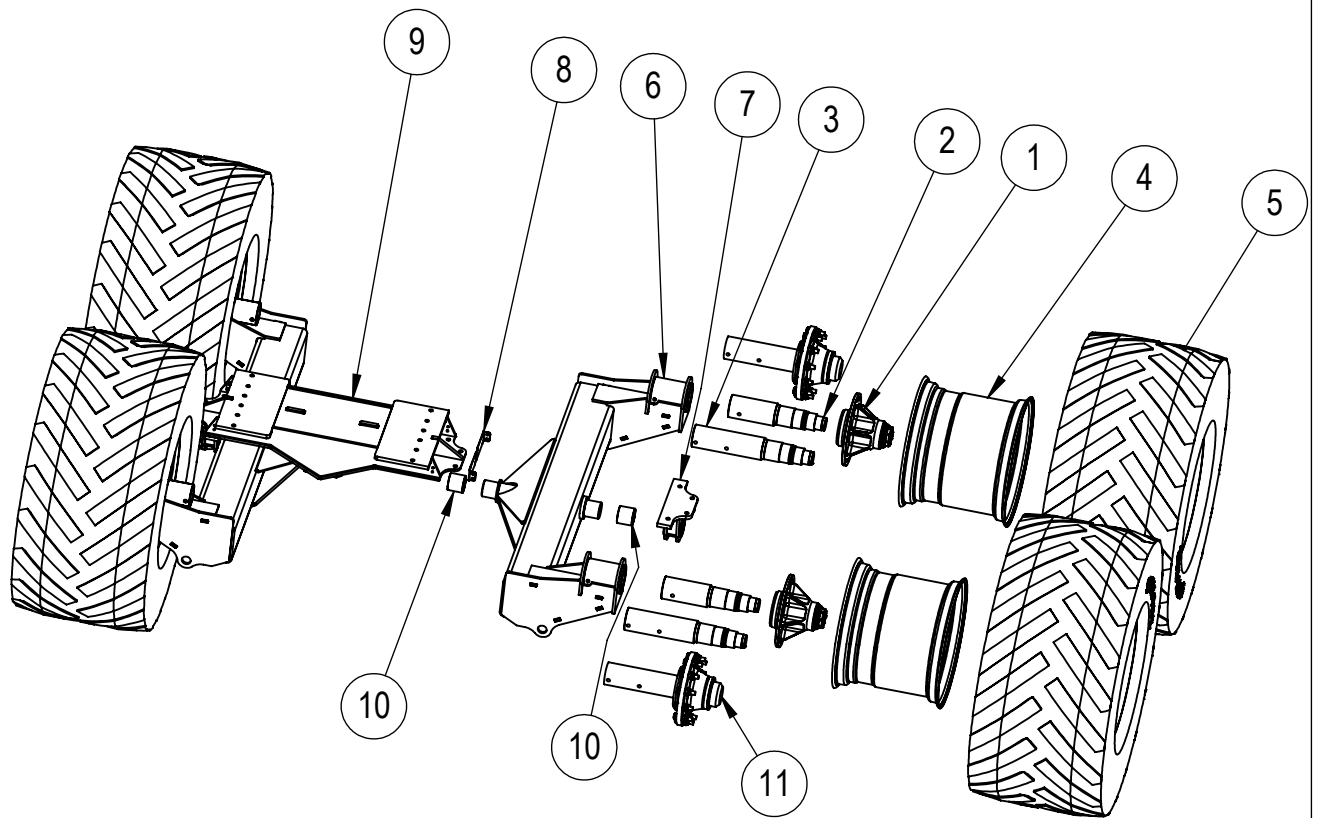
ITEM NO.	PART NUMBER	DESCRIPTION	QTY.	PAGE
1	0231007	10 STUD HUB	2	21
2	2201002-32R	RIM	2	-
3	2202009	800mm TYRE	2	-
4	2203020-01	18 AND 25 TON STUB AXLE STANDARD	2	-
5	2203020-01	18 AND 25 TON STUB AXLE 3m	2	-
6	2526007	LOAD CELL MT703 T50	2	-
7	3104002	30 TON AXLE FOR WHEELS	1	-
8	3104013	LOAD CELL REPLACEMENT SPACER	2	-

30 TON SINGLE AXLE



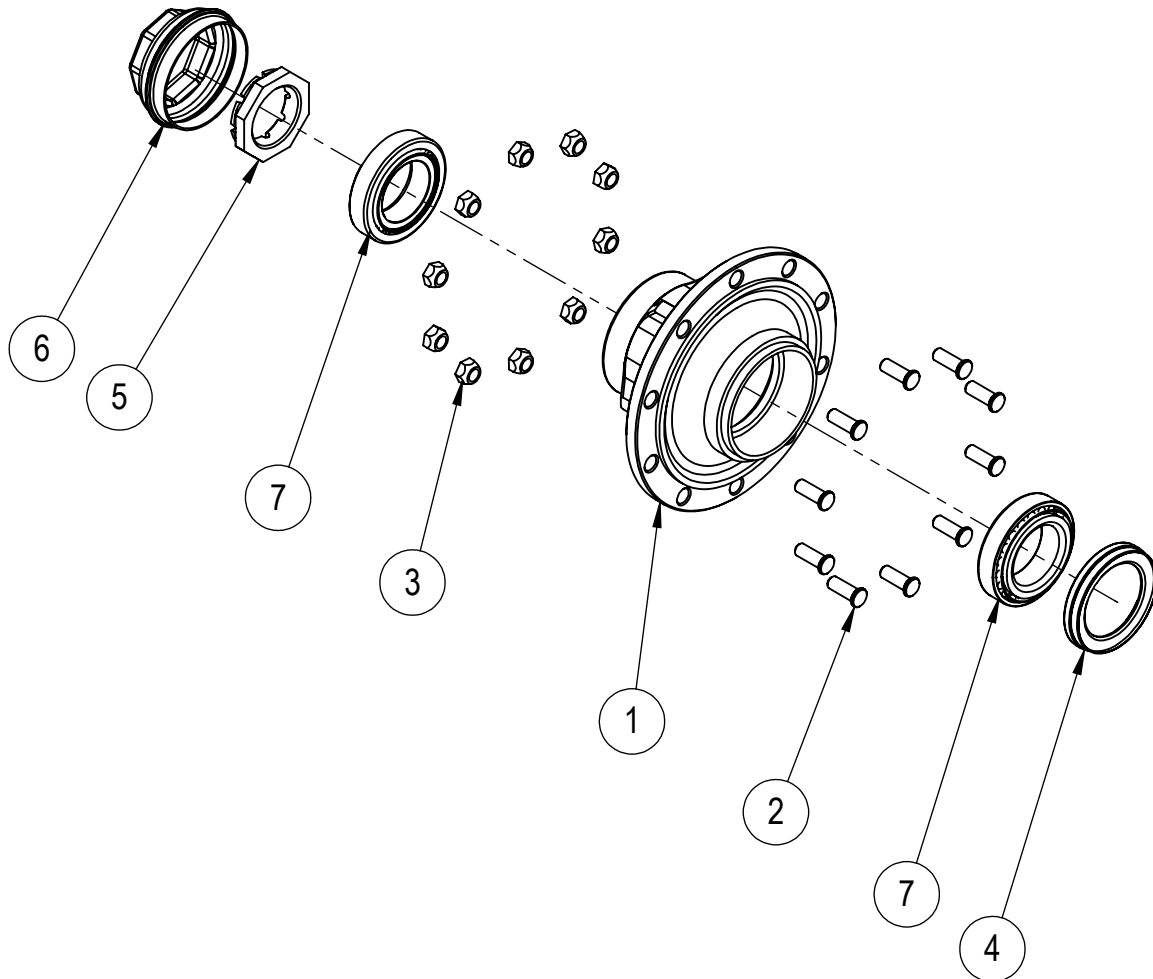
ITEM NO.	PART NUMBER	DESCRIPTION	QTY	PAGE
1	0231009	ADR 12 STUD HUB	2	24
2	0231025-01	30/35 TON STUB AXLE STANDARD FOR ADR HUB	2	-
3	0231025-02	30/35 TON STUB AXLE 3m FOR ADR HUB	2	-
4	2201007_32R	RIM	2	-
5	2202004	900mm TYRE	2	-
6	2526007	LOAD CELL MT703 T50	2	-
7	3104007	30 TON AXLE FOR WHEELS	1	-
8	3104013	LOAD CELL REPLACEMENT SPACER	2	-
9	202-0138	STUB AXLE, 150 SERIES, 12 STUD 034.936.010, TITAN	2	24

30 AND 35 TON TANDEM AXLE



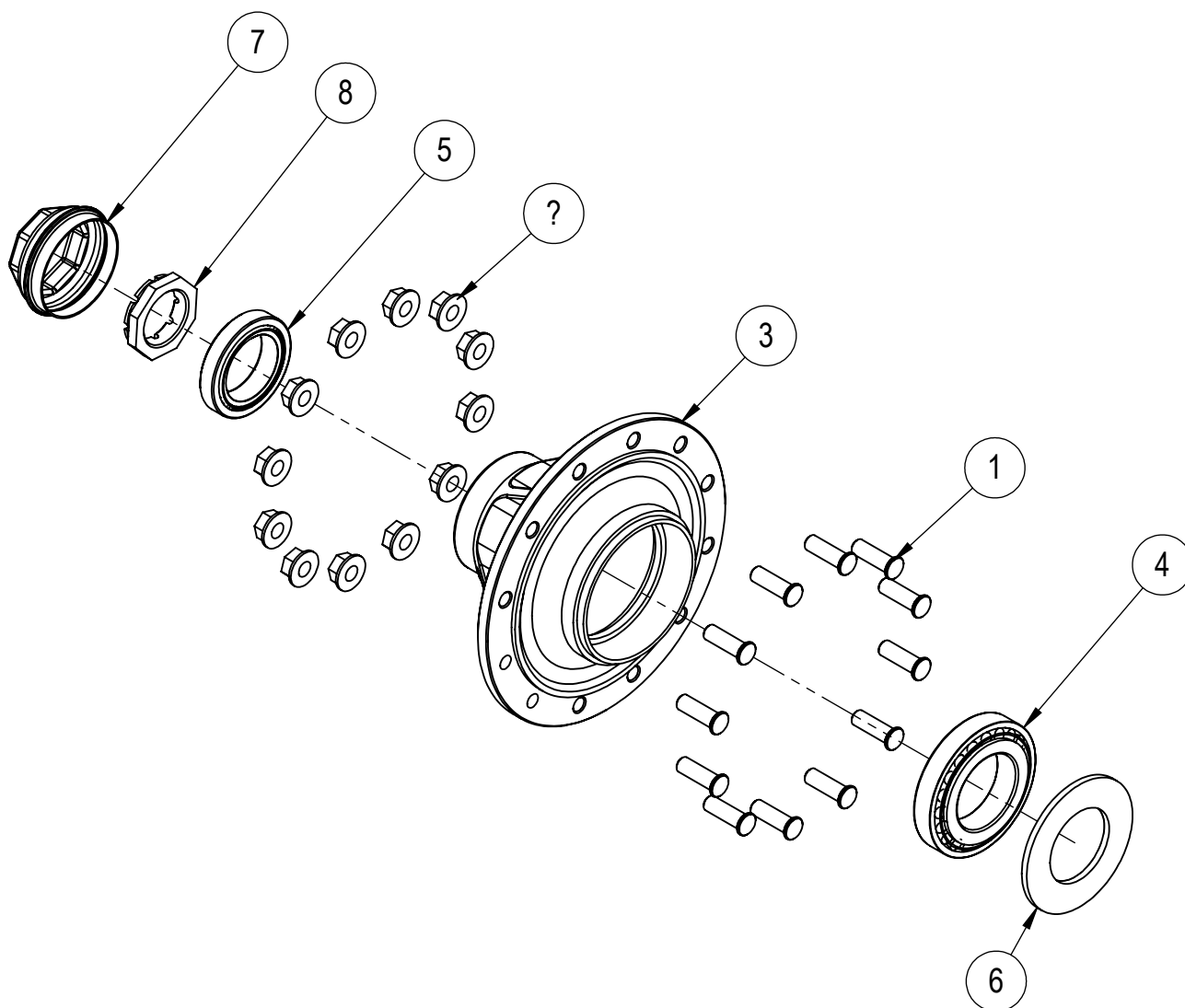
ITEM NO.	PART NUMBER	DESCRIPTION	QTY	PAGE
1	0231009	ADR 12 STUD HUB	4	24
2	0231025-01	30/35 TON STUB AXLE STANDARD FOR ADR HUB	4	-
3	0231025-02	30/35 TON STUB AXLE 3m FOR ADR HUB	4	-
4	2201007_32R	RIM	4	-
5	2202004	900mm TYRE	4	-
6	3104008	TANDEM AXLES WELDED ASSEMBLY	2	-
7	3104009	DUAL AXLE SIDE MOUNTING	2	-
8	3104010-01	BOLT COVER	4	-
9	3104012	TANDEM AXLE CENTER MOUNTING	1	-
10	GSM-110115- 100	ID110xOD115x100LG	4	-
11	202-0138	STUB AXLE, 150 SERIES, 12 STUD 034.936.010, TITAN	4	24

10 STUB HUB



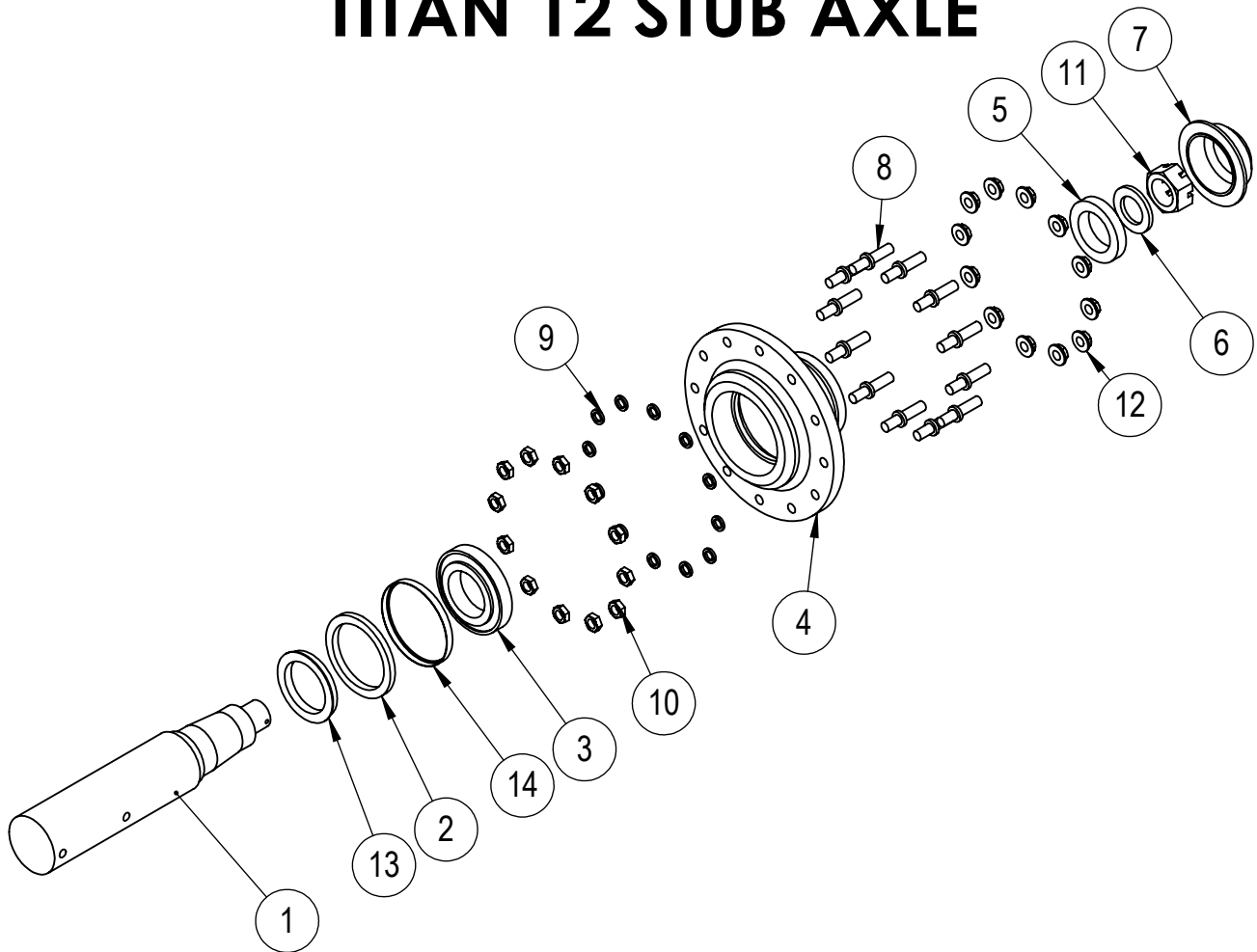
ITEM NO.	PART NUMBER	DESCRIPTION	QTY	PAGE
1	2203006-03	STANDARD HUB	1	-
2	2203006-04	STANDARD STUD	10	-
3	2203006-05	WHEEL NUT	10	-
4	2203006-06	SEAL	1	-
5	2203006-07	CROW NUT	1	-
6	2203006-08	HUB CAP	1	-
7	2203006-09	BEARING	2	-

ADR 12 STUB HUB



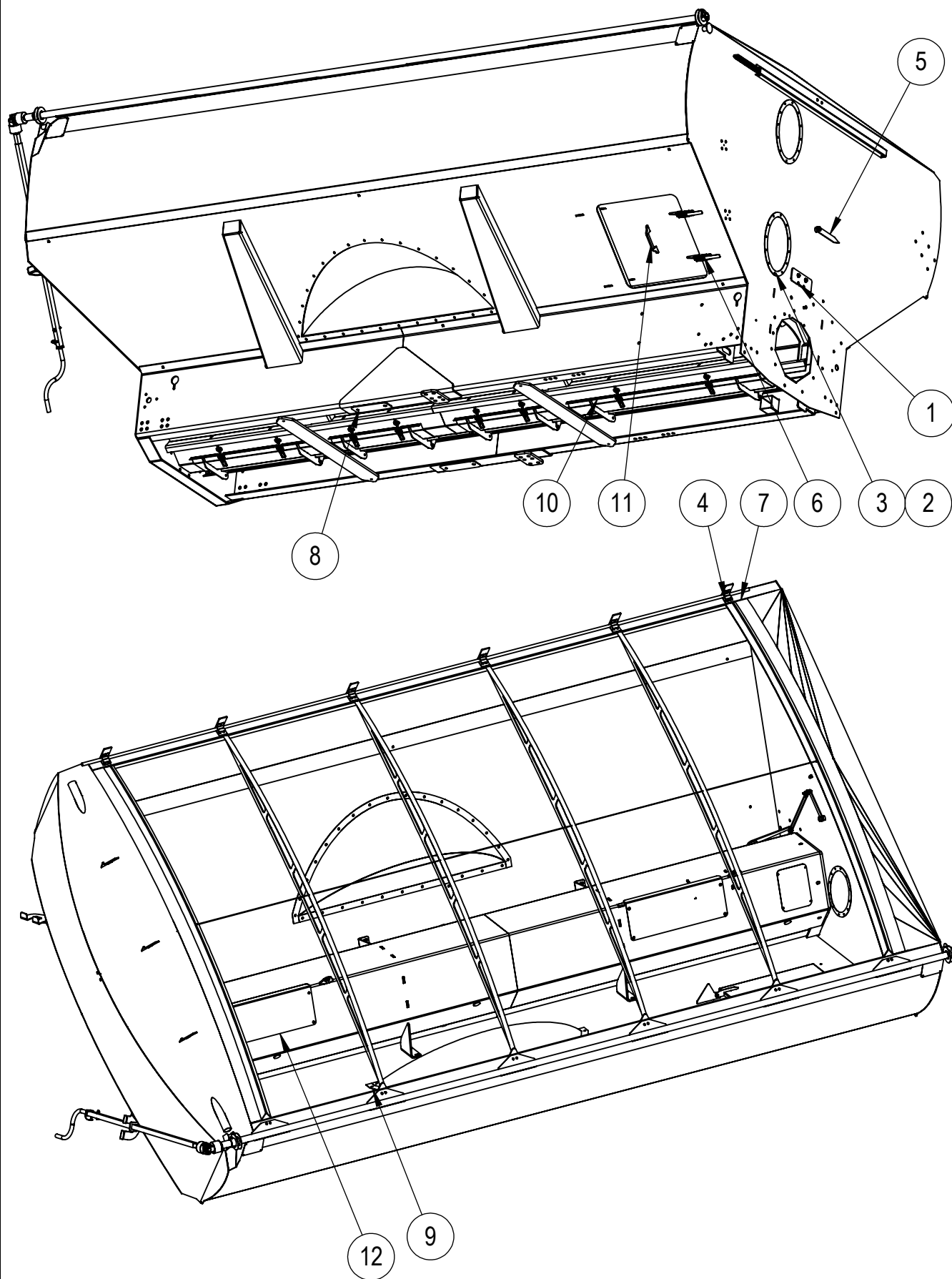
ITEM NO.	PART NUMBER	DESCRIPTION	QTY	PAGE
1	2203007-04	STUD	12	-
2	2203007-05	WHEEL NUT WITH CAPTIVE ROTATING WASHER M24x2	12	-
3	2203007-02	HUB	1	-
4	2203018	BEARING	1	-
5	2203019	BEARING	1	-
6	2203021	SEAL	1	-
7	2203007-03	HUB CAP	1	-
8	2203027-02	CROWN NUT	1	-

TITAN 12 STUB AXLE



ITEM NO.	PART NUMBER	DESCRIPTION	QTY	PAGE
1	139-4227	TITAN STUB AXLE FOR 034.936.010	1	-
2	139-4228	SEAL	1	-
3	139-4229	150 SERIES BEARING 30224 SKF	1	-
4	139-4230	150-12 HUB M/C AND DRILLED	1	-
5	139-4231	150 SERIES BEARING 32021 SKF	1	-
6	139-4232	150 SERIES WASHER	1	-
7	139-4233	DUST CAP 150 SERIES BOLT ON	1	-
8	139-4234	WHEEL STUD M24 x 2.0 x 122 T/S 150 SERIES	12	-
9	139-4235	WASHER SPRING M24	12	-
10	139-4236	NUT NYLOCK M24 X 2 GR 8	12	-
11	139-4237	NUT SLOTTED M70 X 2 ANDYS T/S 150 SERIES	1	-
12	134-4104	WHEEL NUT M24 x 2 C/W CAPTIVE ROTATING FLAT WASHER	12	-
13	139-4238	SEAL RING 150 SERIES 135 x 170.5 x 180 x 20.5	1	-
14	139-4239	WEAR RING 150 SERIES T/S SEAL 215 X 170 X 15	1	-

BIN ASSEMBLY



BIN ASSEMBLY MATERIAL LIST

ITEM NO.	PART NUMBER	DESCRIPTION	QTY	PAGE
1	0205068	HYDRAULIC HOSE CLAMP PLATE	1	-
2	0205087-01	WINDOW SURROUND	4	-
3	0205087-02	WINDOW PERSPEX 6MM THICK (BIN)	2	-
4	0215014	TARP INSTALLATION	1	33-38
5	0218001	POINTER ASSEMBLY	1	-
6	2510002	UTE LATCHES	2	-
7	3105026	BIN WELDED ASSEMBLY	1	-
8	3105030-03	LOAD CELL WEAR PLATE	2	-
9	3105037	WHEEL ARCH WELDED ASSEMBLY	2	-
10	3105055	GRAIN DUMP DOORS	A/R	-
11	3114001	ACCESS DOOR WELDED ASSEMBLY	1	-
12	3131019	GRAIN CONTROL DOORS	1	38

HOSE LIST FOR HYDRAULIC DRIVE

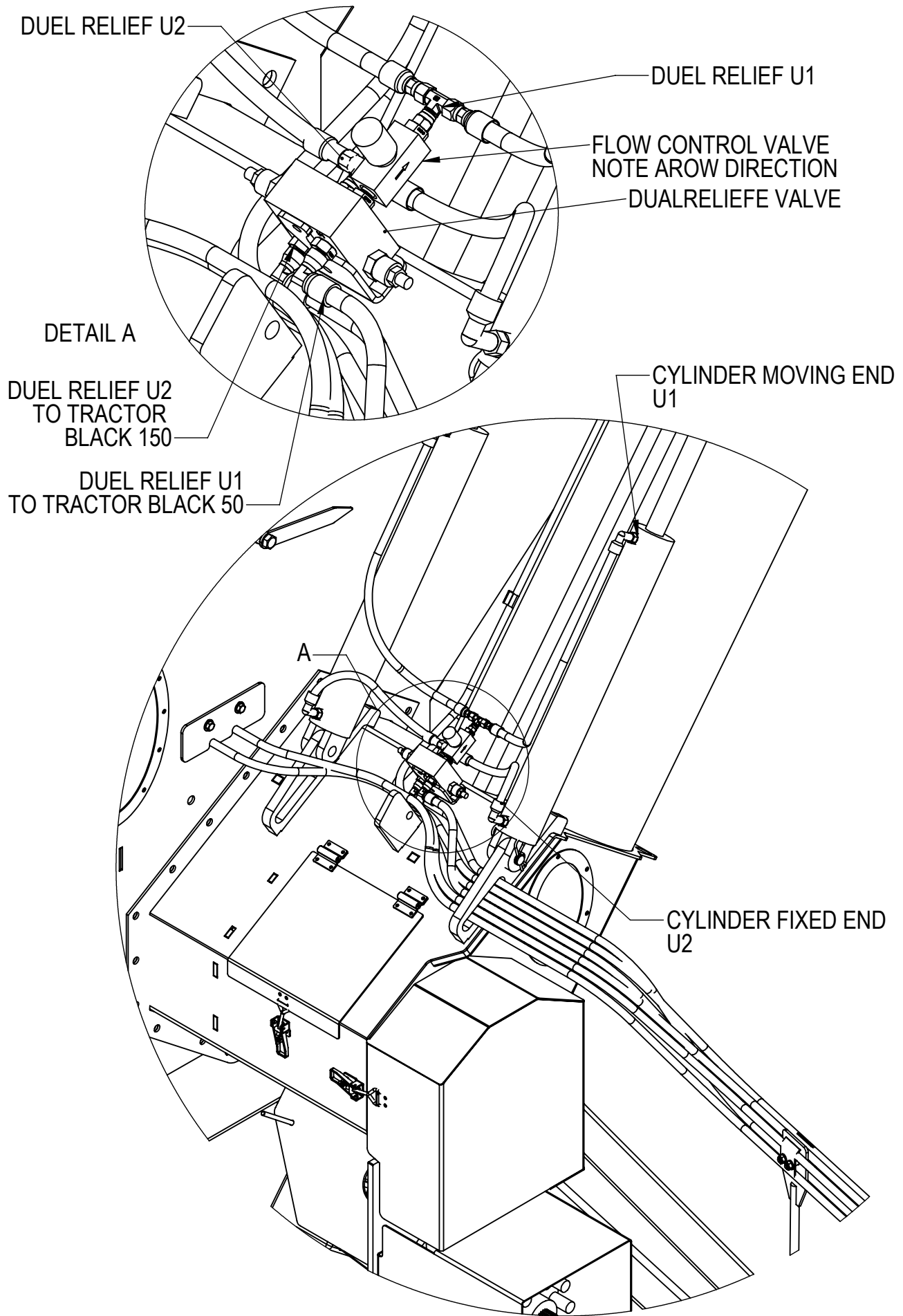
ITEM NO.	PART NUMBER	DESCRIPTION	QTY.	HOSE SIZE	FITTING END	Length	END 1	END 2
1	3131018-01	DUMP LINE TRACTOR TO HYDRAULIC MOTOR	1	HYDRAULIC HOSE 1"	1 5/16 JIC FEMALE	1865	B	B
2	3131018-02	TRACTOR TO GRAIN GAT CYLINDER FIXED END	1	HYDRAULIC HOSE 1"	1 5/16 JIC FEMALE	1890	A	A
3	3131018-03	TWIN REMOTE COUPLING	1	HYDRAULIC HOSE 3/4"	1 1/16 JIC FEMALE	1000		
4	3131018-04	DRAIN LINE	1	10mm HOSE	FEMALE SWAGE COUPLING 3/4-16	2120		

HOSE LIST FOR BIN

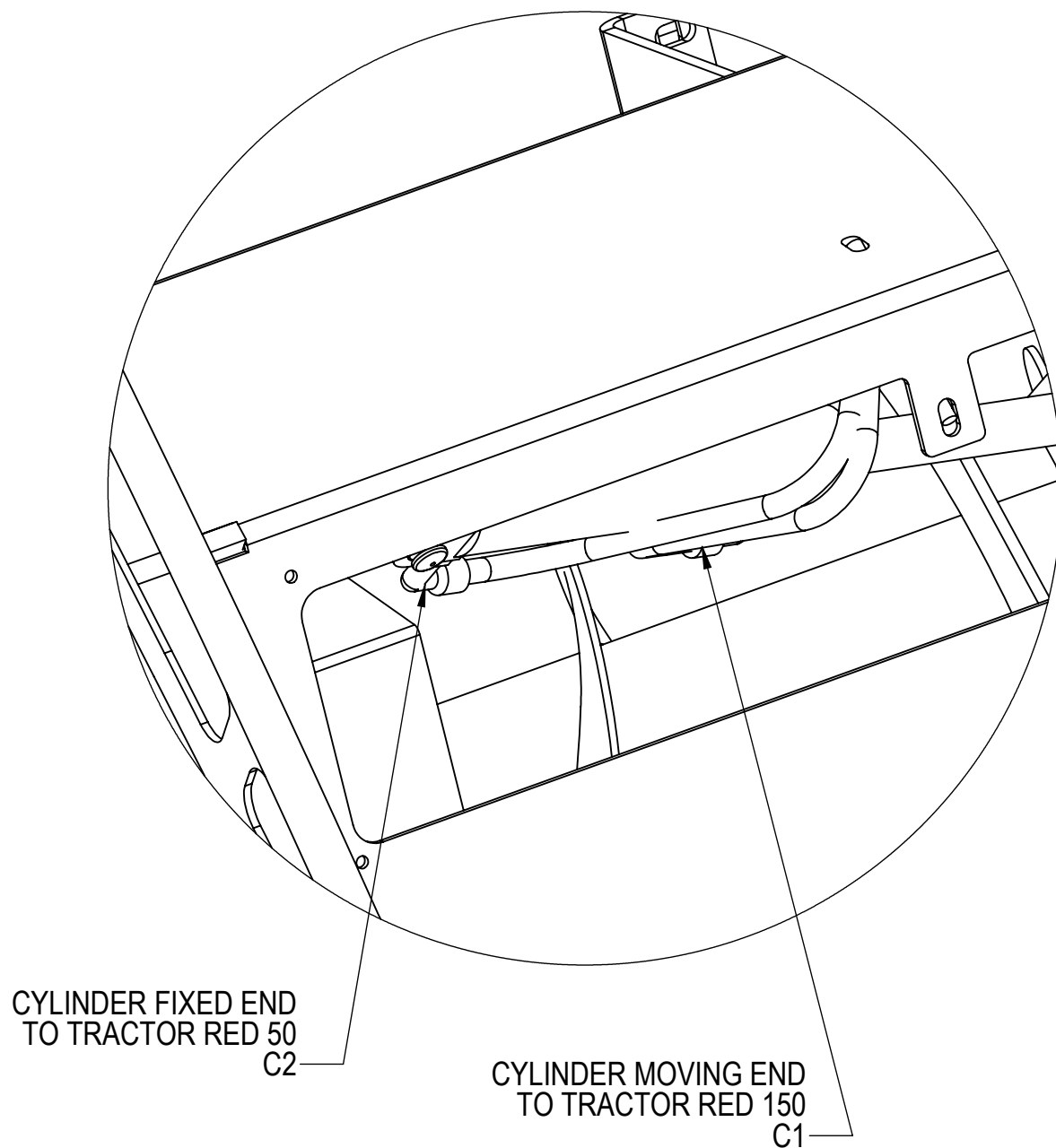
ISO COUPLING TO GO ON ALL HOSE WRAPPED ENDS

ITEM NO.	PART NUMBER	DESCRIPTION	QTY	HOSE SIZE	FITTING END	Length	END 1	END 2
1	3131009-06	TRACTOR TO DUEL RELIEF U1	1	HYDRAULIC HOSE 1/4"	9/16 JIC FEMALE	4000	BLACK 50	U1
2	3131009-05	TRACTOR TO DUEL RELIEF U2	1	HYDRAULIC HOSE 1/4"	9/16 JIC FEMALE	4000	BLACK 150	U2
3	3131009-04	DUAL RELIEF U2 TO CYLINDER FIXED END	2	HYDRAULIC HOSE 1/4"	9/16 JIC FEMALE	400	U2	U2
4	3131009-03	DUAL RELIEF U1 TO CYLINDER MOVING END	2	HYDRAULIC HOSE 1/4"	9/16 JIC FEMALE	650	U1	U1
5	3131009-02	TRACTOR TO SPOUT CYLINDER FIXED END	1	HYDRAULIC HOSE 1/4"	9/16 JIC FEMALE	9580	YELLOW 50	D2
6	3131009-01	TRACTOR TO SPOUT CYLINDER MOVING END	1	HYDRAULIC HOSE 1/4"	9/16 JIC FEMALE	9580	YELLOW 150	D1
7	3131017-01	TRACTOR TO GRAIN GAT CYLINDER MOVING END	1	HYDRAULIC HOSE 1/4"	9/16 JIC FEMALE	5850	RED 150	C1
8	3131017-02	TRACTOR TO GRAIN GAT CYLINDER FIXED END	1	HYDRAULIC HOSE 1/4"	9/16 JIC FEMALE	5850	RED 50	C2

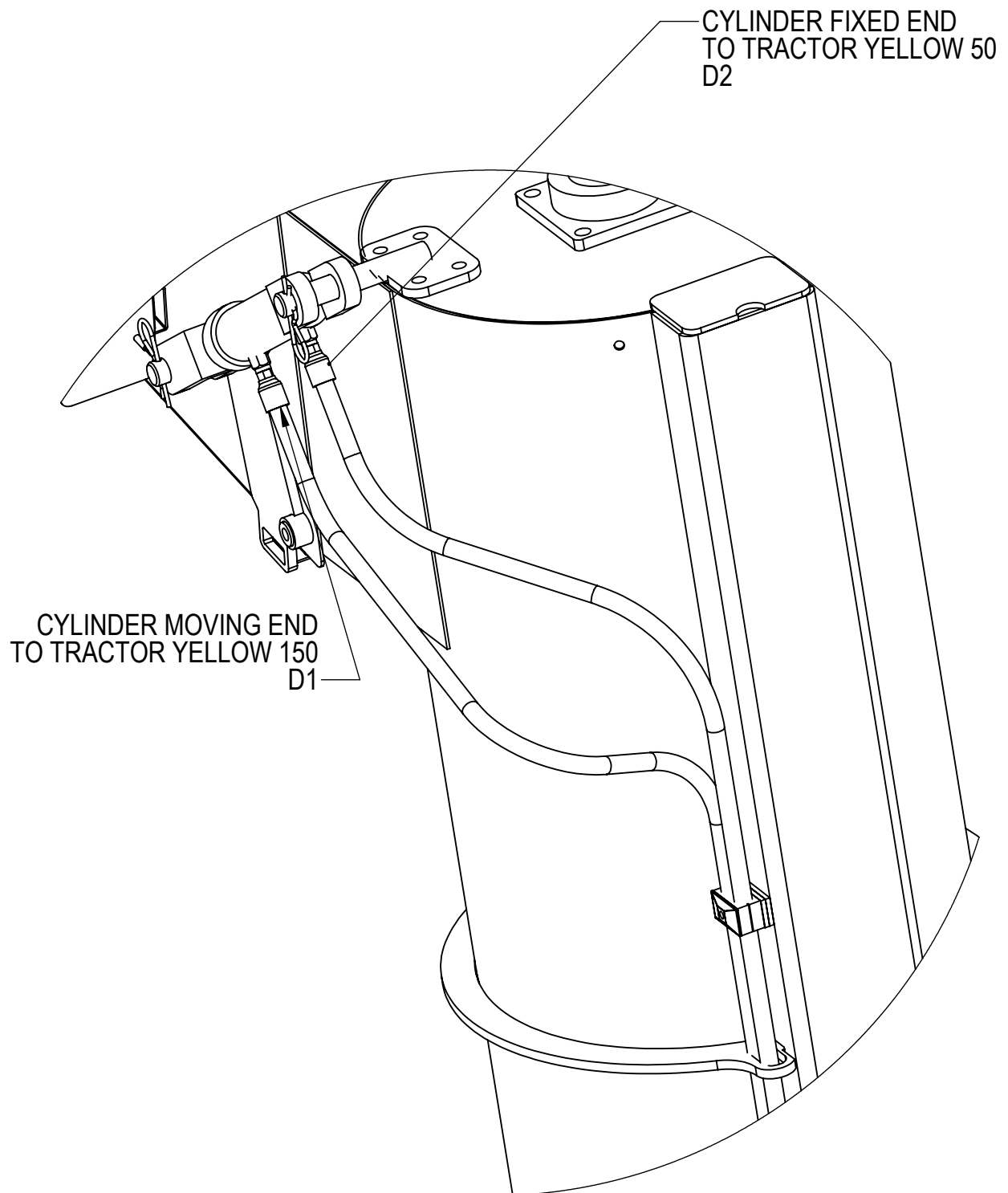
AUGER FOLD PIPING



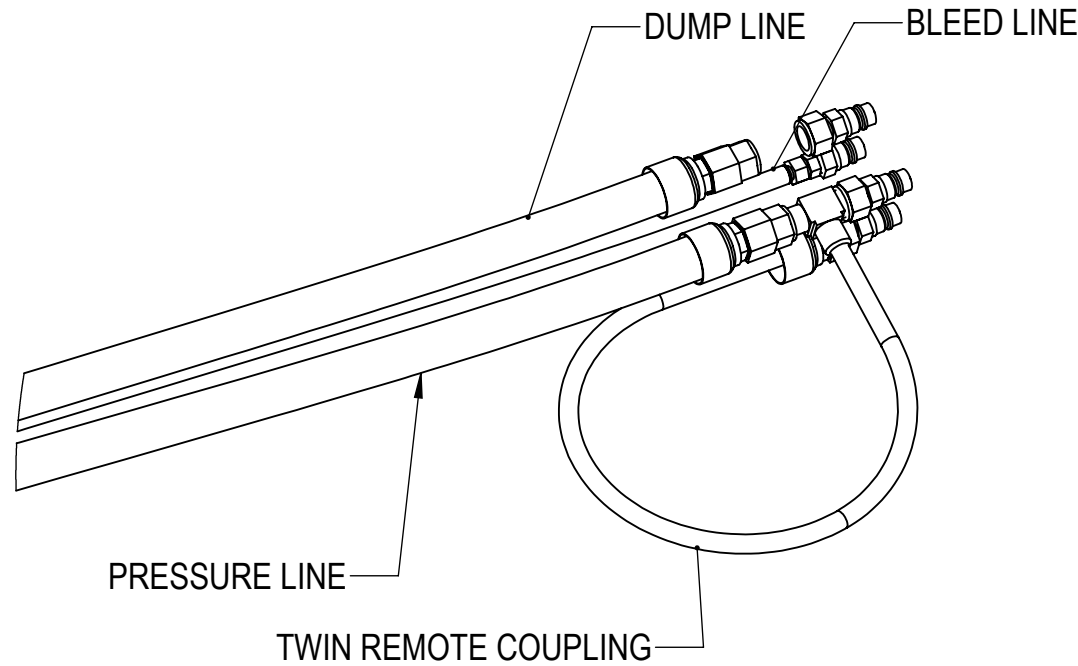
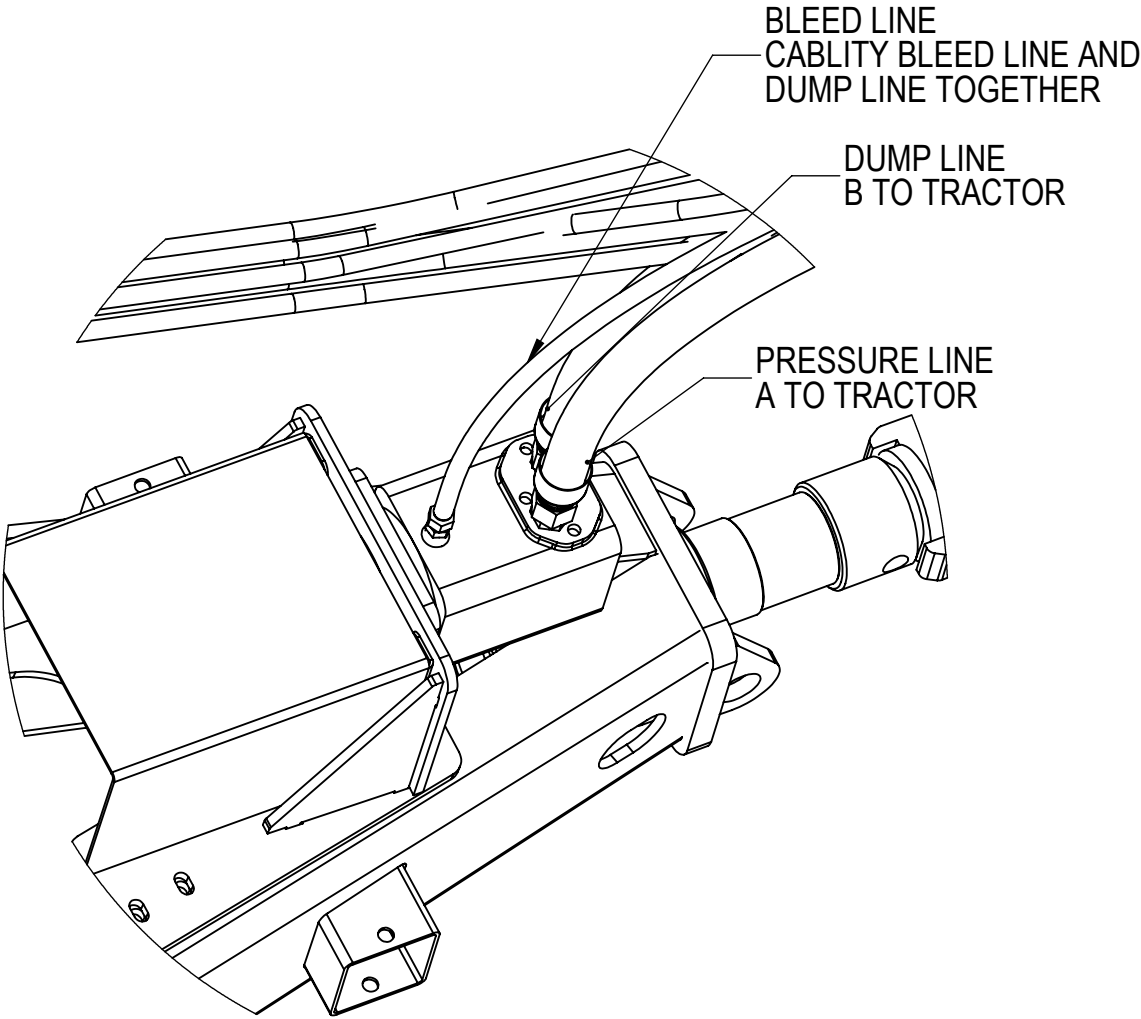
GRAIN CONTROL FLOW PIPING



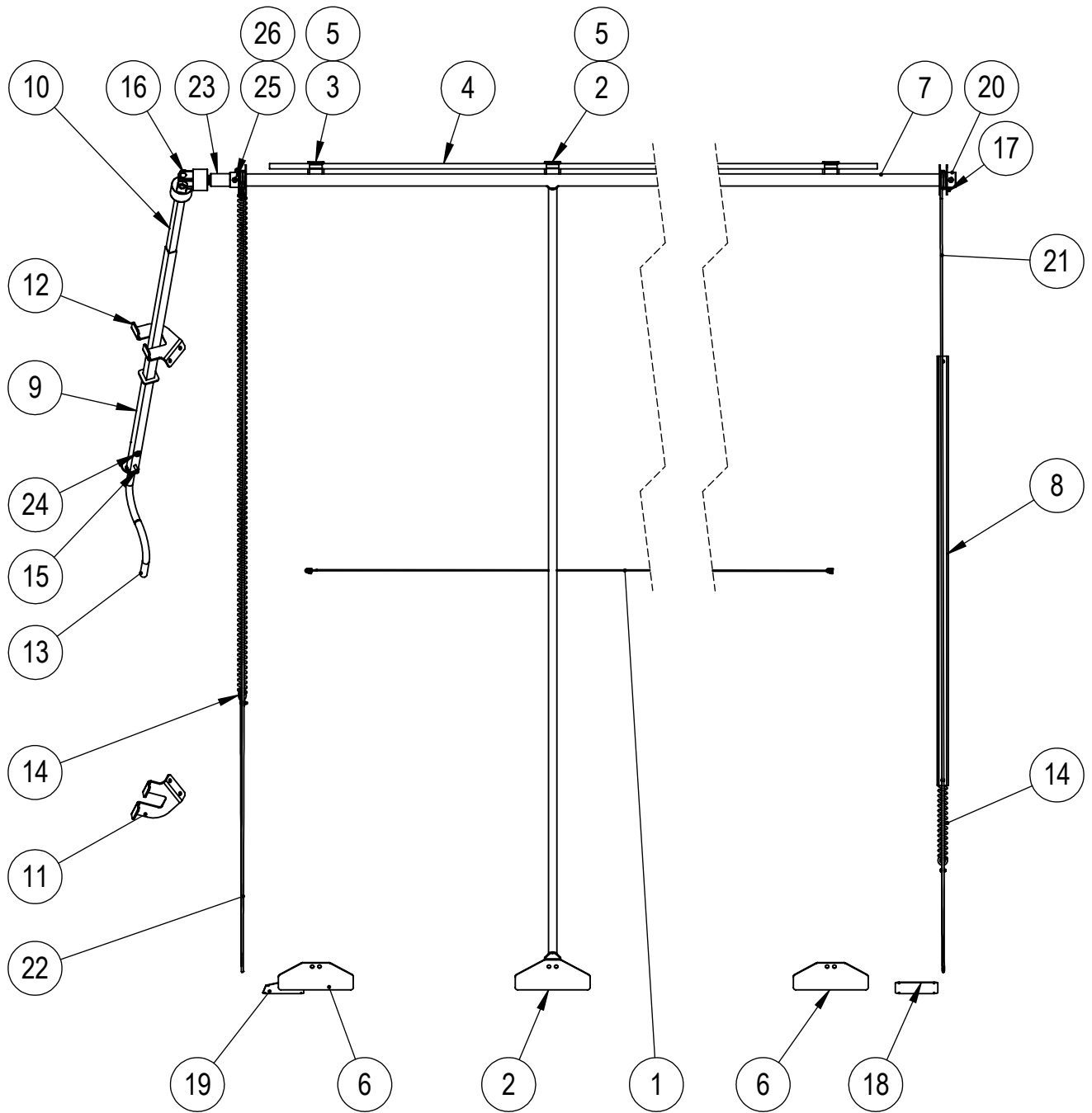
SPOUT CONTROL PIPING



HYDRAULIC CONTROL PIPING



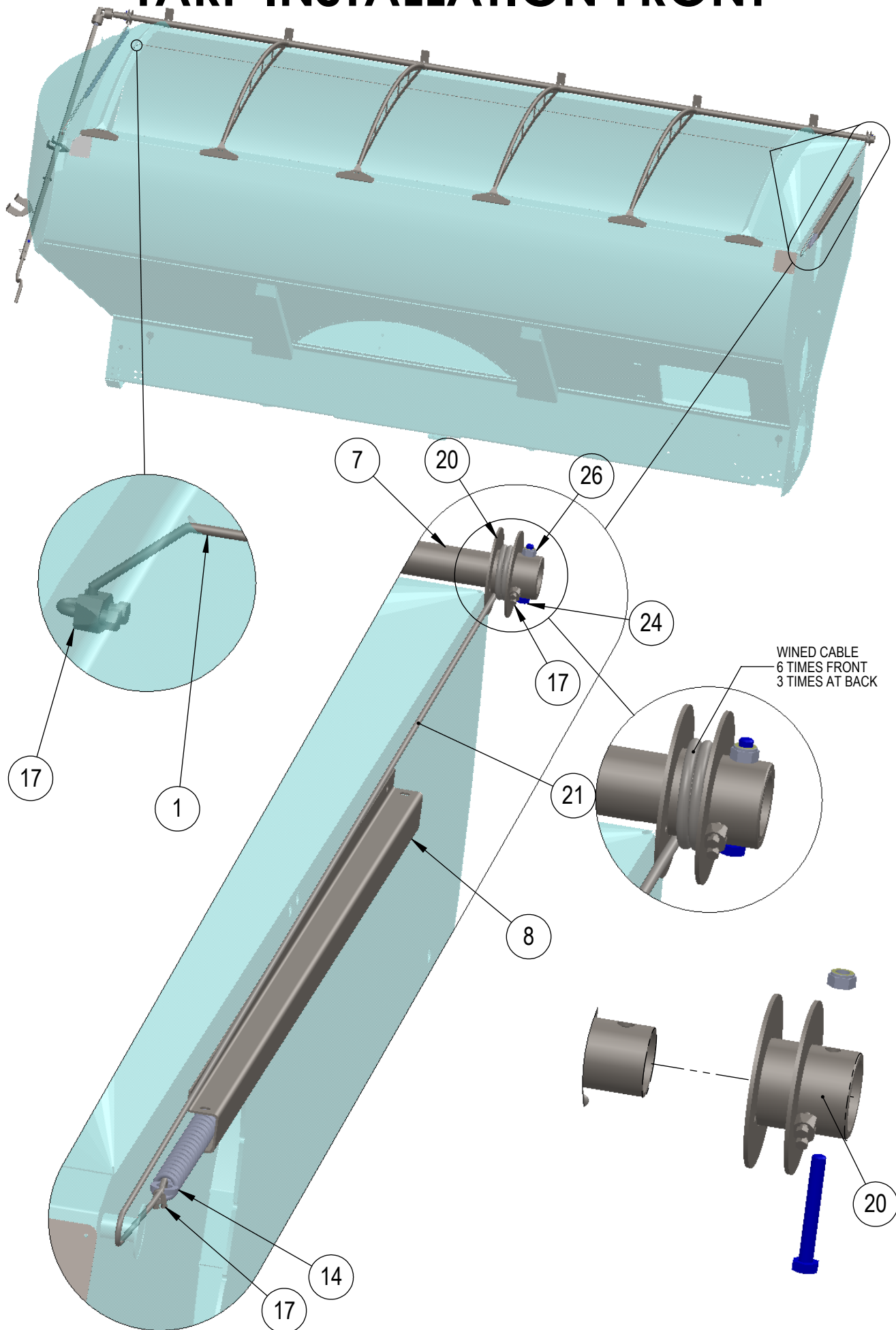
TARP INSTALLATION OVERVIEW



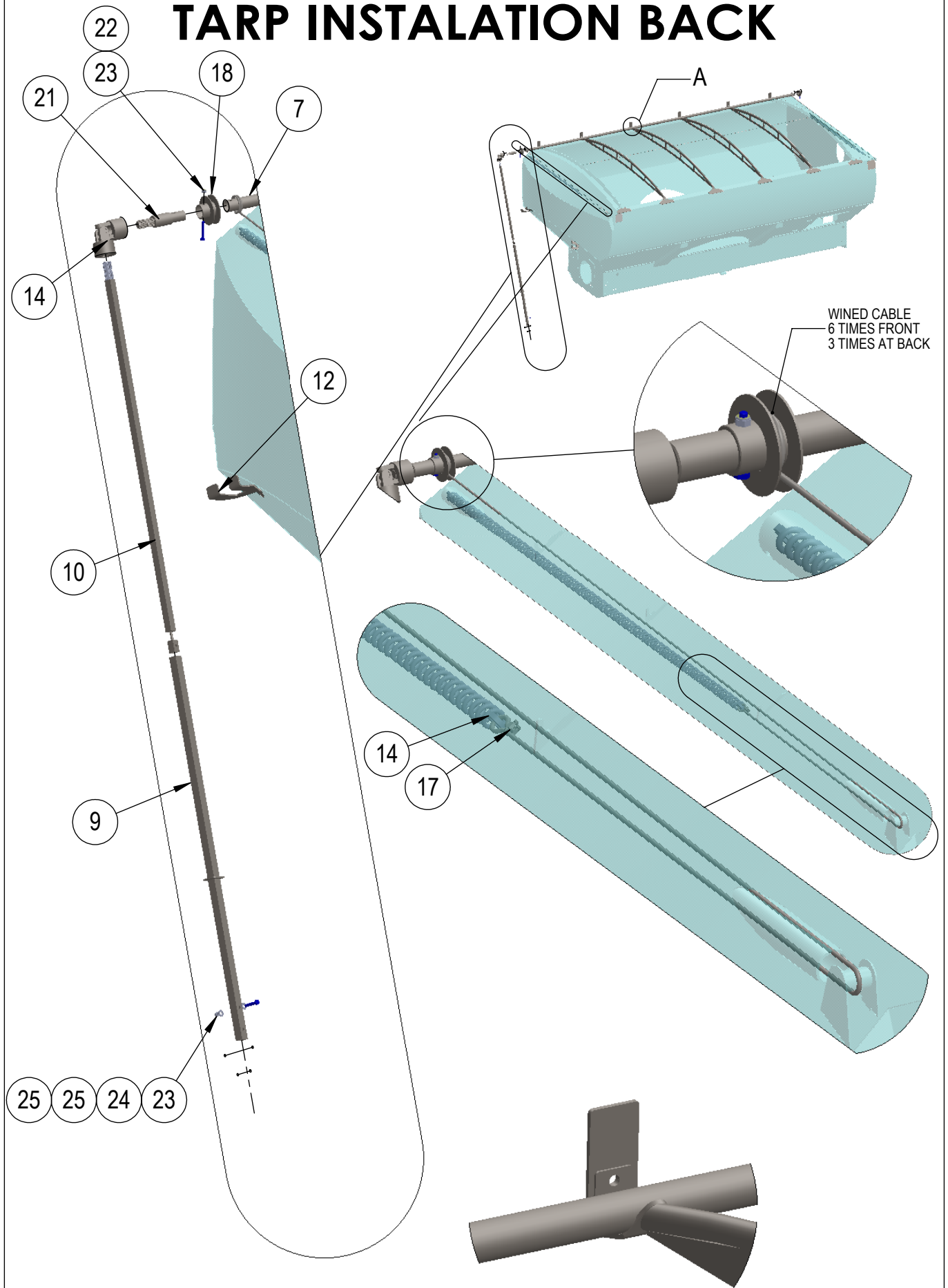
TARP MATERIAL LIST

ITEM NO.	PART NUMBER	DESCRIPTION	QTY	PAGE
1	0205060-25	4mm WIRE ROPE ASSEMBLY	1	
2	0215001	TARP SUPPORT BOW	4	
3	0215002-01	TARP CATCHER	2	
4	0215002-02	TARP RETAINING ROD	1	
5	0215002-03	TARP CLAMP	6	
6	0215002-04	PLATE	2	
7	0215004-05	TARP ROLL PIPE	1	
8	0215009-01	SPRING COVER	1	
9	0215010	TARP HANDEL PART 2	1	
10	0215012	TARP HANDEL PART 1	1	
11	0215013-01	TARP ROLLER HANDEL HOLDER RH	1	
12	0215013-02	TARP ROLLER HANDEL HOLDER LH	1	
13	0215021	REMOVABLE TARP HANDLE	1	
14	0220024	TARP SPRING	2	
15	2508006	SHAFT LOCKING PIN	1	
16	2513001	TARP UNIVERSAL JOINT	1	
17	2527001	4mm WIRE ROPE GRIP	6	
18	3105030-04	STAINLESS STEEL PROTECTION PLATE	1	
19	3105030-05	STAINLESS STEEL PROTECTION PLATE	1	
20	3115010	TARP ROLL END	2	
21	3131020-01	4mm DIA 6m LONG WIRE TENSION ROPE	1	
22	3131020-02	4mm DIA 6m LONG WIRE TENSION ROPE	1	
23	3131021	TARP ROLL SPIGOT	1	
24	1010124601	M10 x 60 BOLT GRADE 4.6 ZINC PLATED	1	
25	1010154601	M10 x 75 BOLT GRADE 4.6 ZINC PLATED	2	
26	5010004601	M10 HEX NYLOCK NUT ZINC PLATED	3	
27	3012000000	M12 FLAT WASHER ZINC PLATED	2	

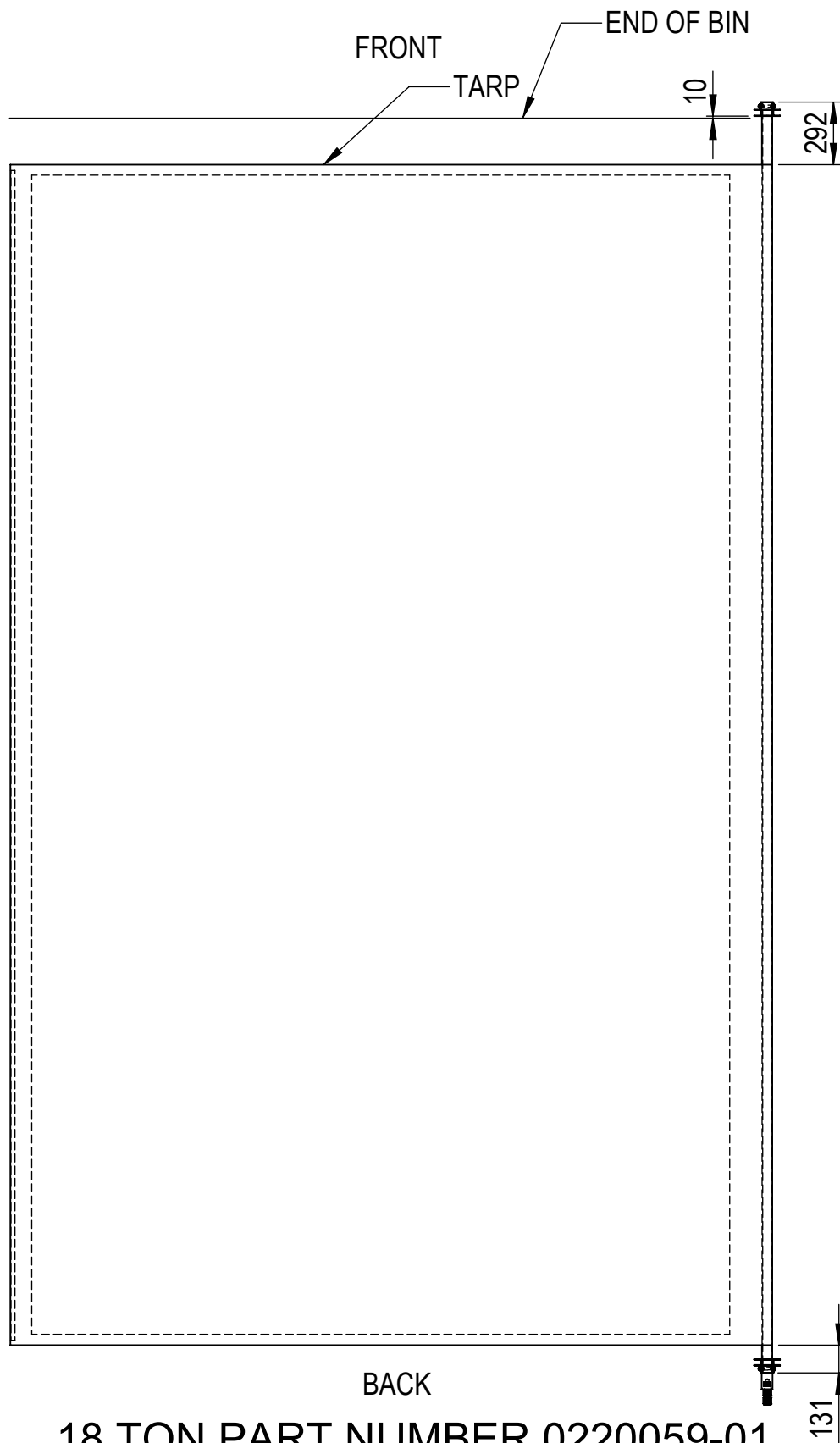
TARP INSTALLATION FRONT



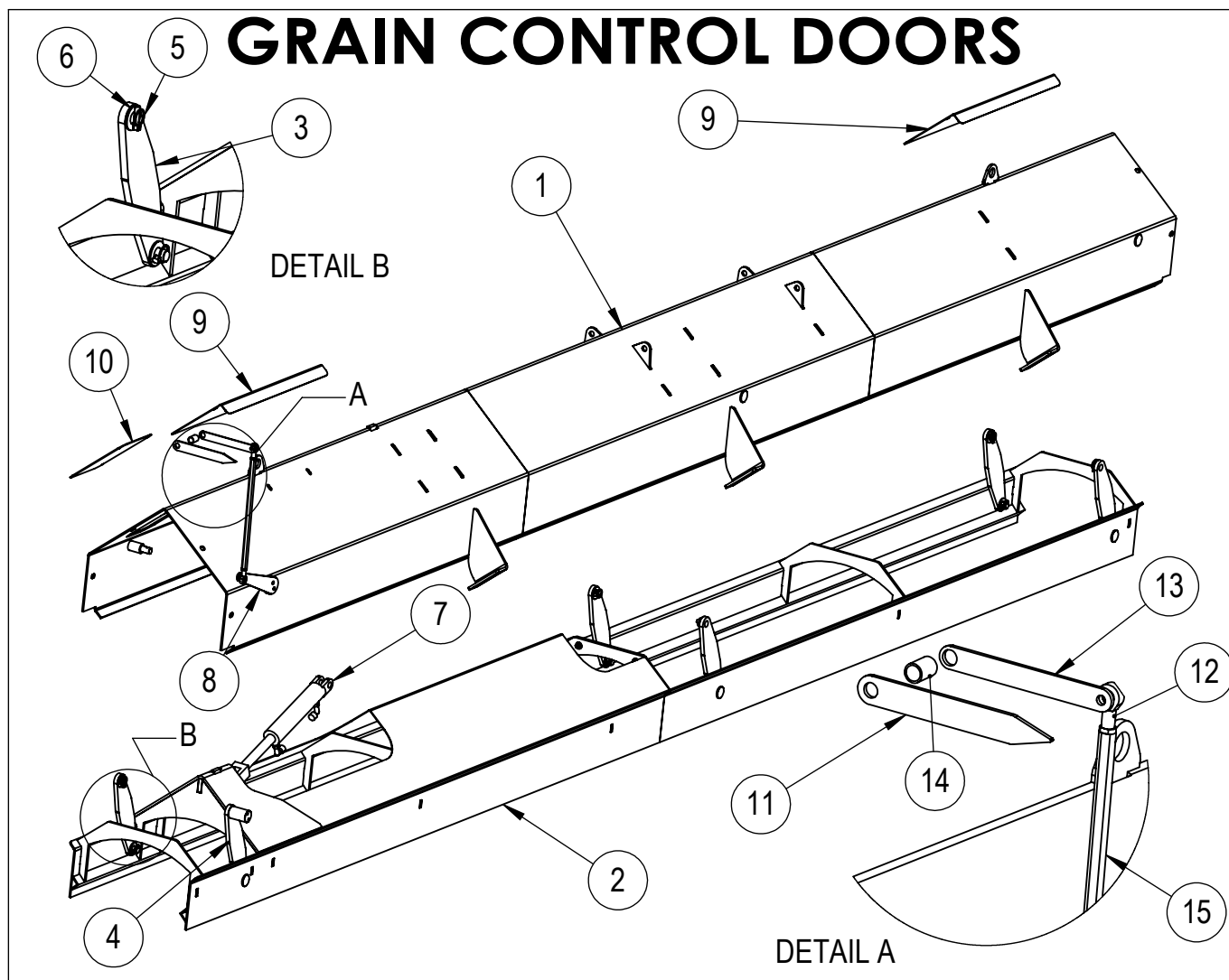
TARP INSTALLATION BACK



TARP ASSEMBLY

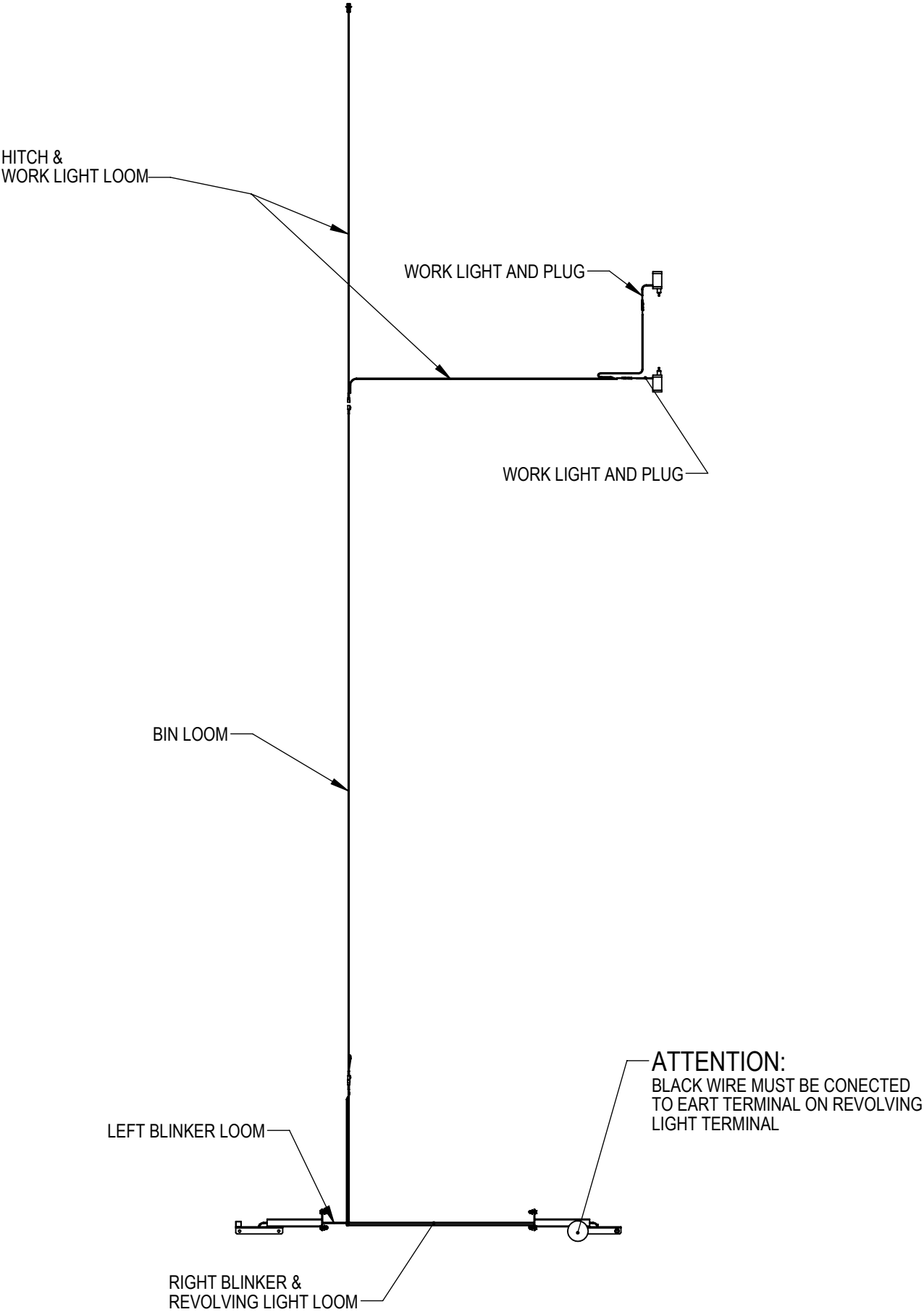


18 TON PART NUMBER 0220059-01
25 TON PART NUMBER 0220059-02
30 TON PART NUMBER 0220059-03
35 TON PART NUMBER 0220059-04

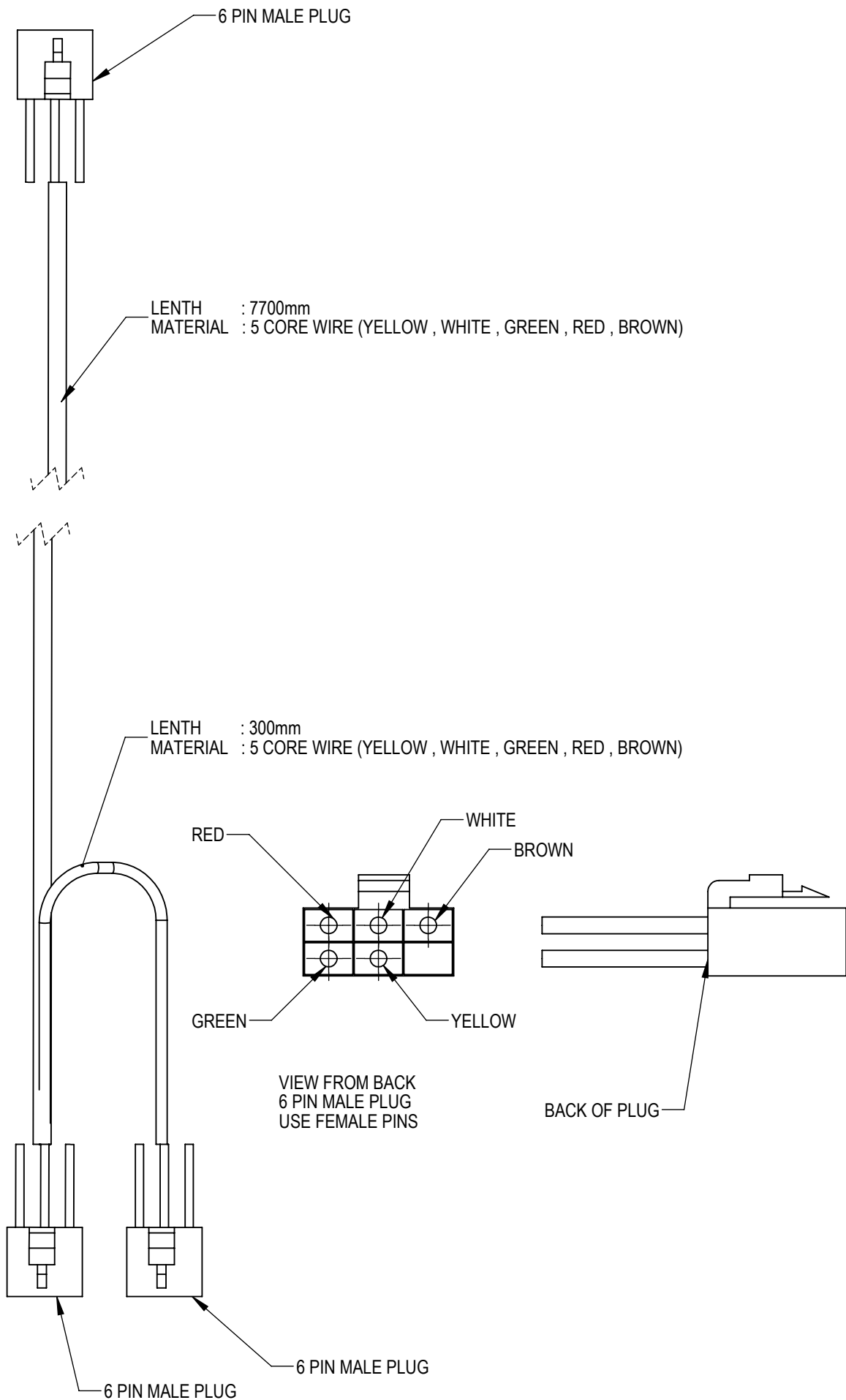


ITEM NO.	PART NUMBER	DESCRIPTION	QTY	PAGE
1	0214112	GRAIN CONTROL HOOD	1	-
2	0214113	GRAIN CONTROL DOORS	1	-
3	0214073-01	ARM	5	-
4	0214081	ARM ASSEMBLY	1	-
5	1211324601	DIA 11 LINCH PIN-B6	11	-
6	3024000000	M24 FLAT WASHER ZINC PLATED	11	-
7	2101016	GRAIN CONTROL HYDRAULIC CYLINDER	1	-
8	0214080-02	POINTER ARM	1	-
9	0214080-03	INSPECTION DOOR	2	-
10	0214111-01	INSPECTION COVER	1	-
11	0218001-01	POINTER	1	-
12	2603001	METRIC FEMALE NARROW RODEND M12 (SI12C)	2	-
13	0218001-02	POINTER LINK PLATE	1	-
14	0218002-01	SPACER	1	-
15	0214082-01	HEX BAR	1	-

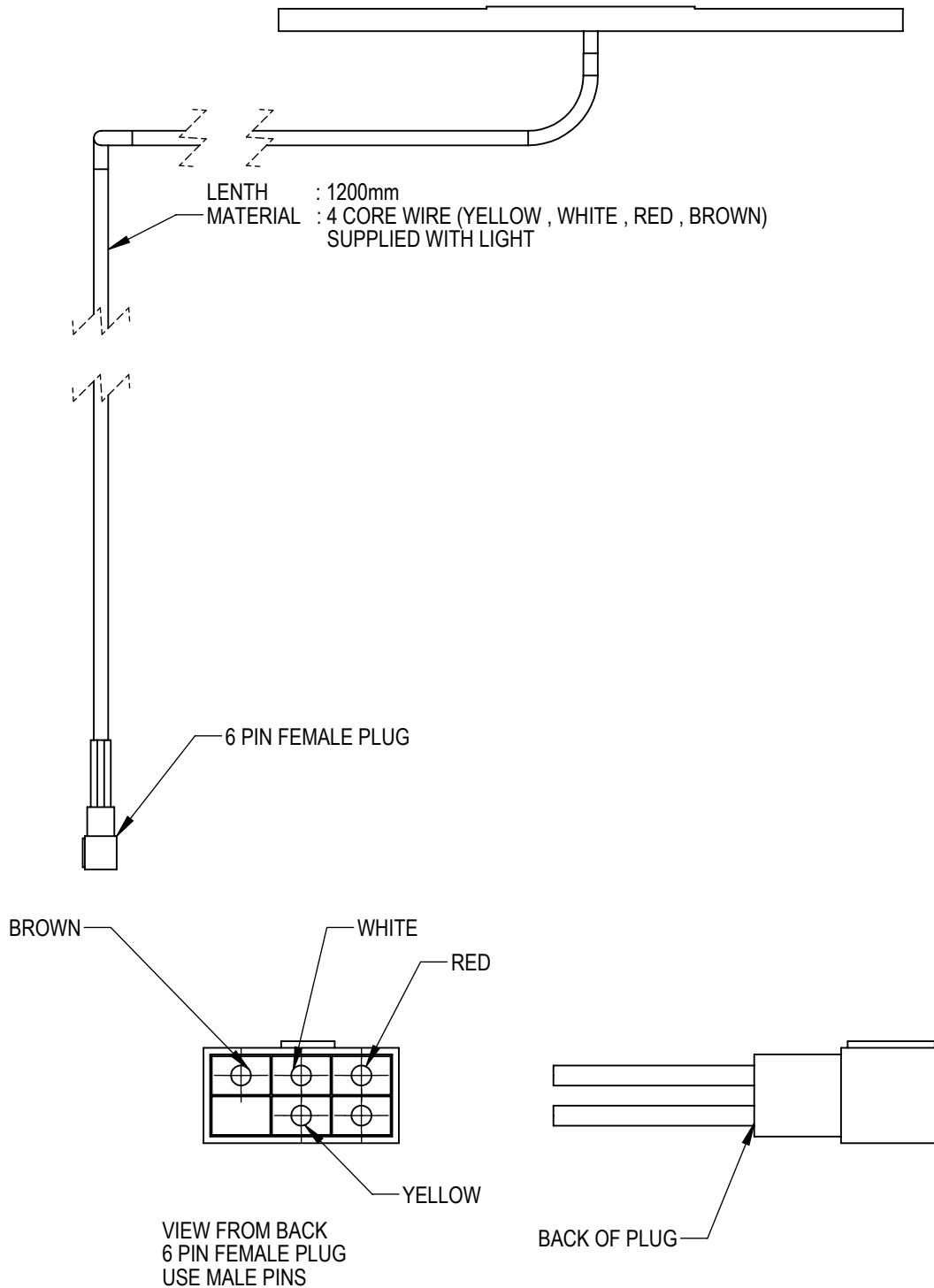
BIN WIRING DIAGRAM



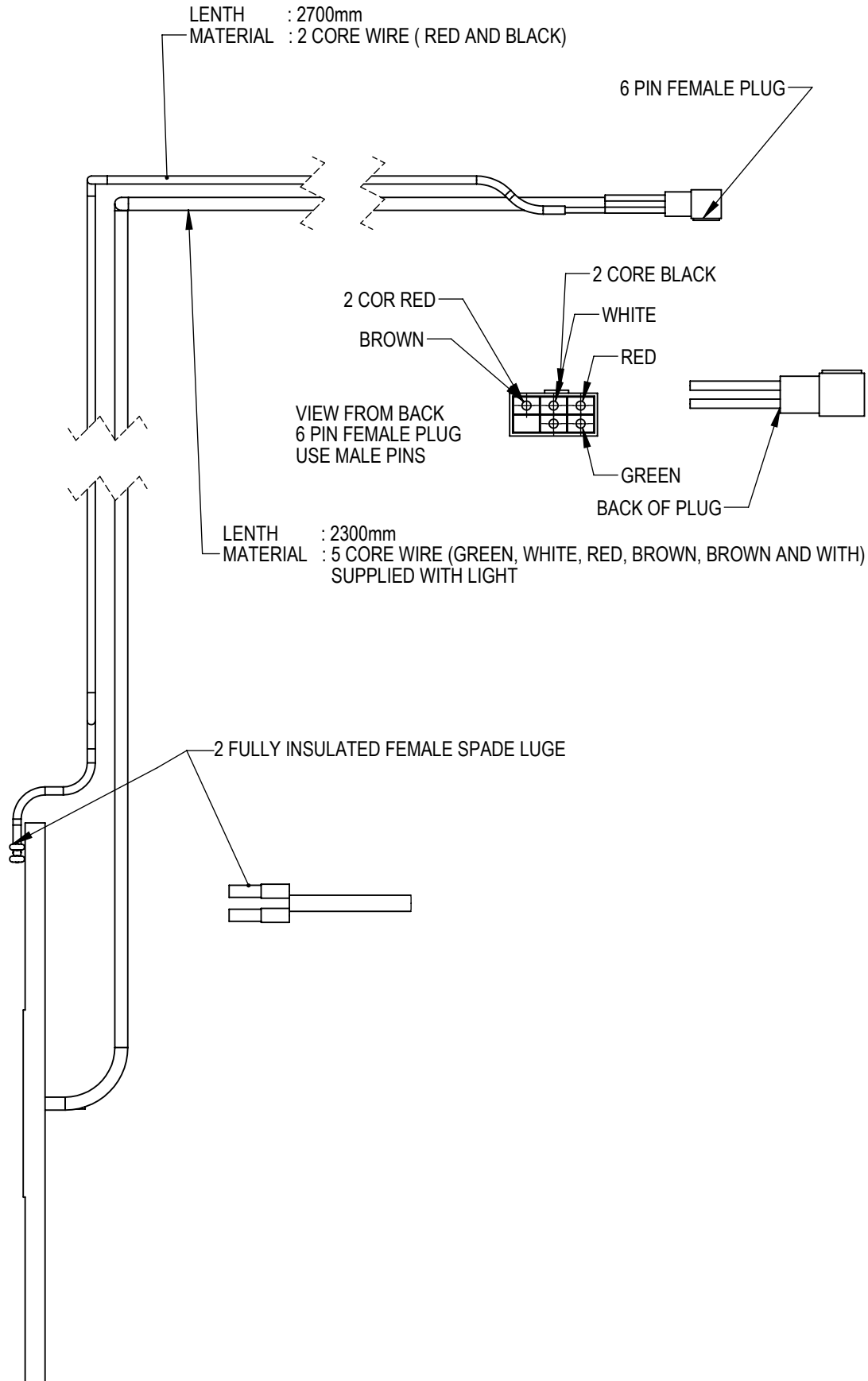
BIN LOOM



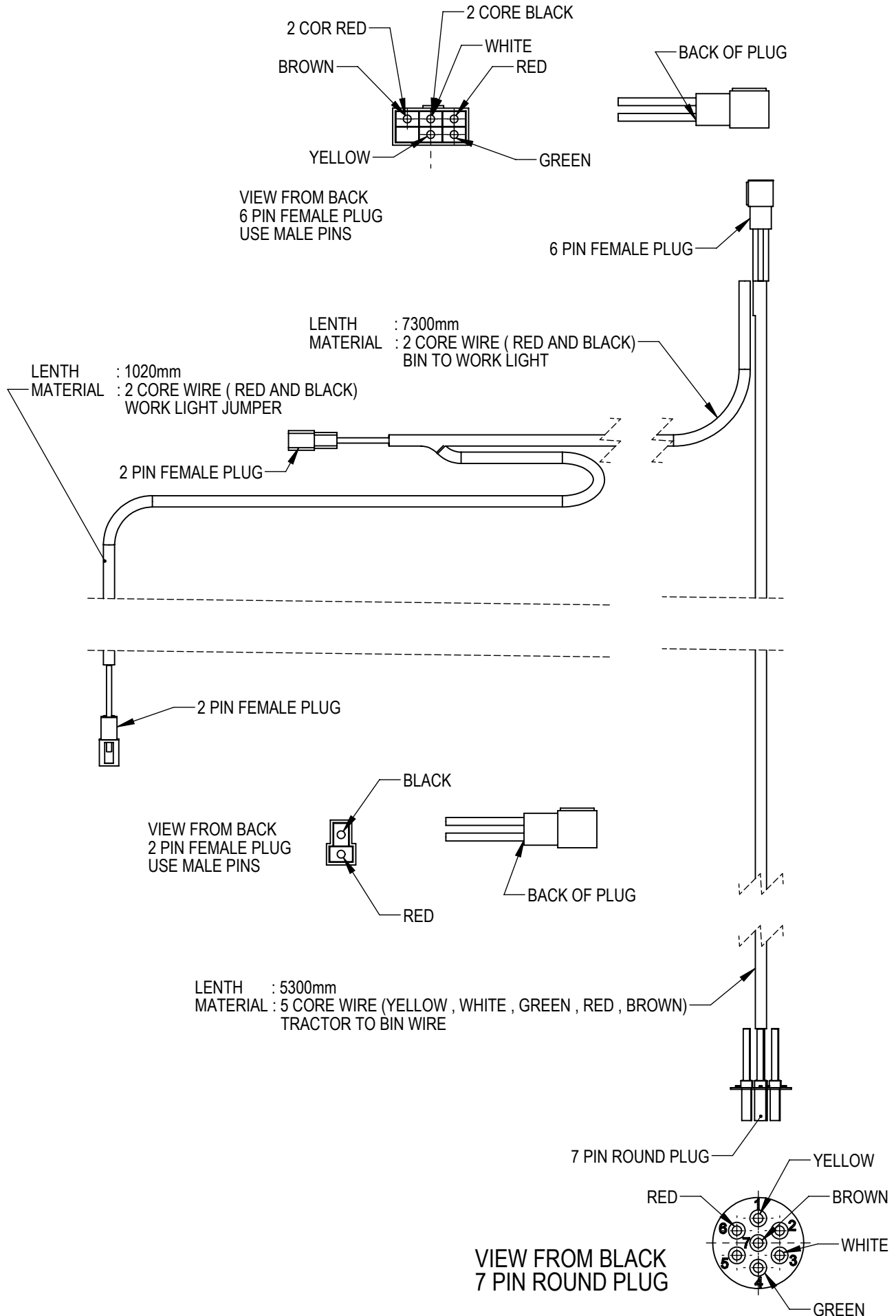
LEFT BLINKER LOOM



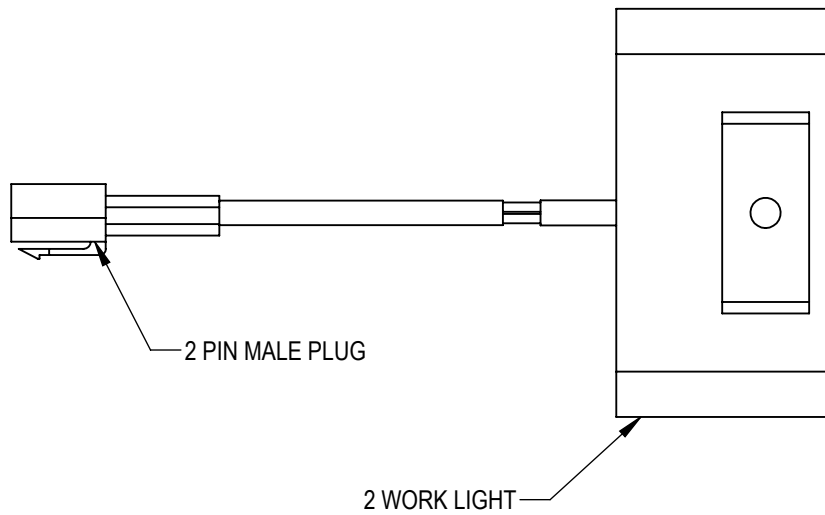
RIGHT BLINKER & REVOLVING LOOM



HITCH & WORK LIGHTS LOOM



WORK LIGHT AND PLUG



VIEW FROM BACK
2 PIN MALE PLUG
USE FEMALE PINS

