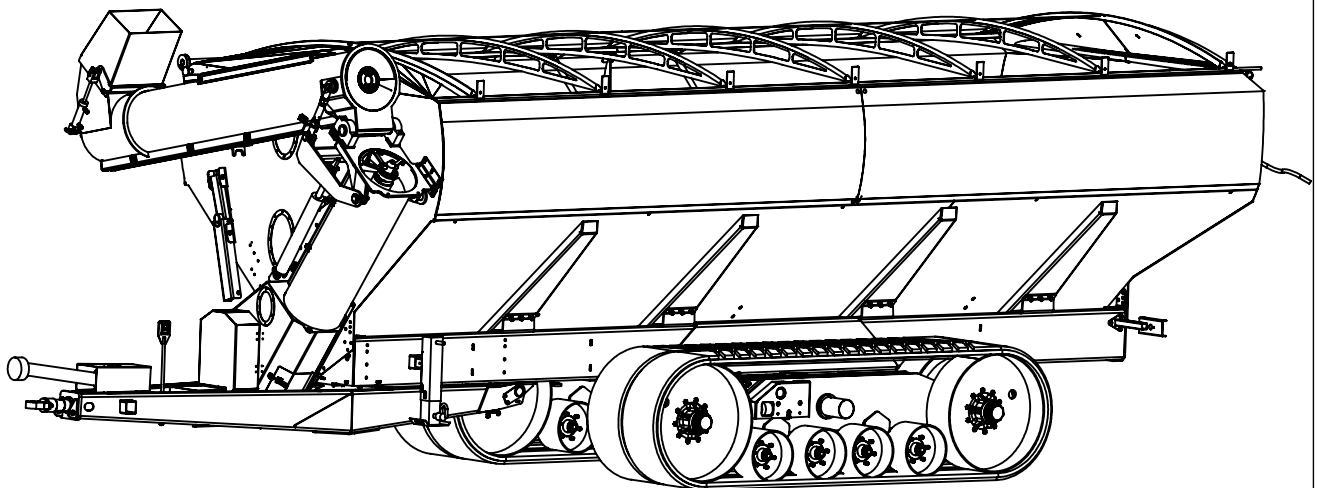
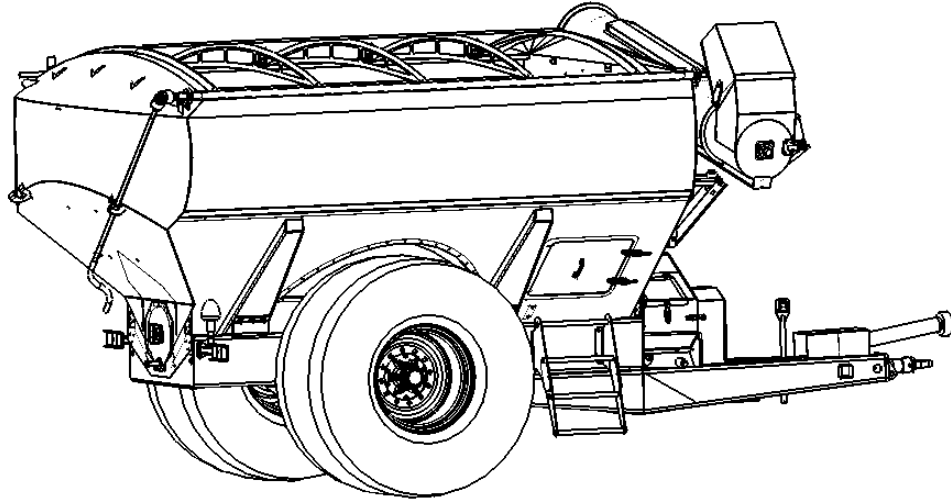


# DAVIMAC CHASER BIN PARTS LIST

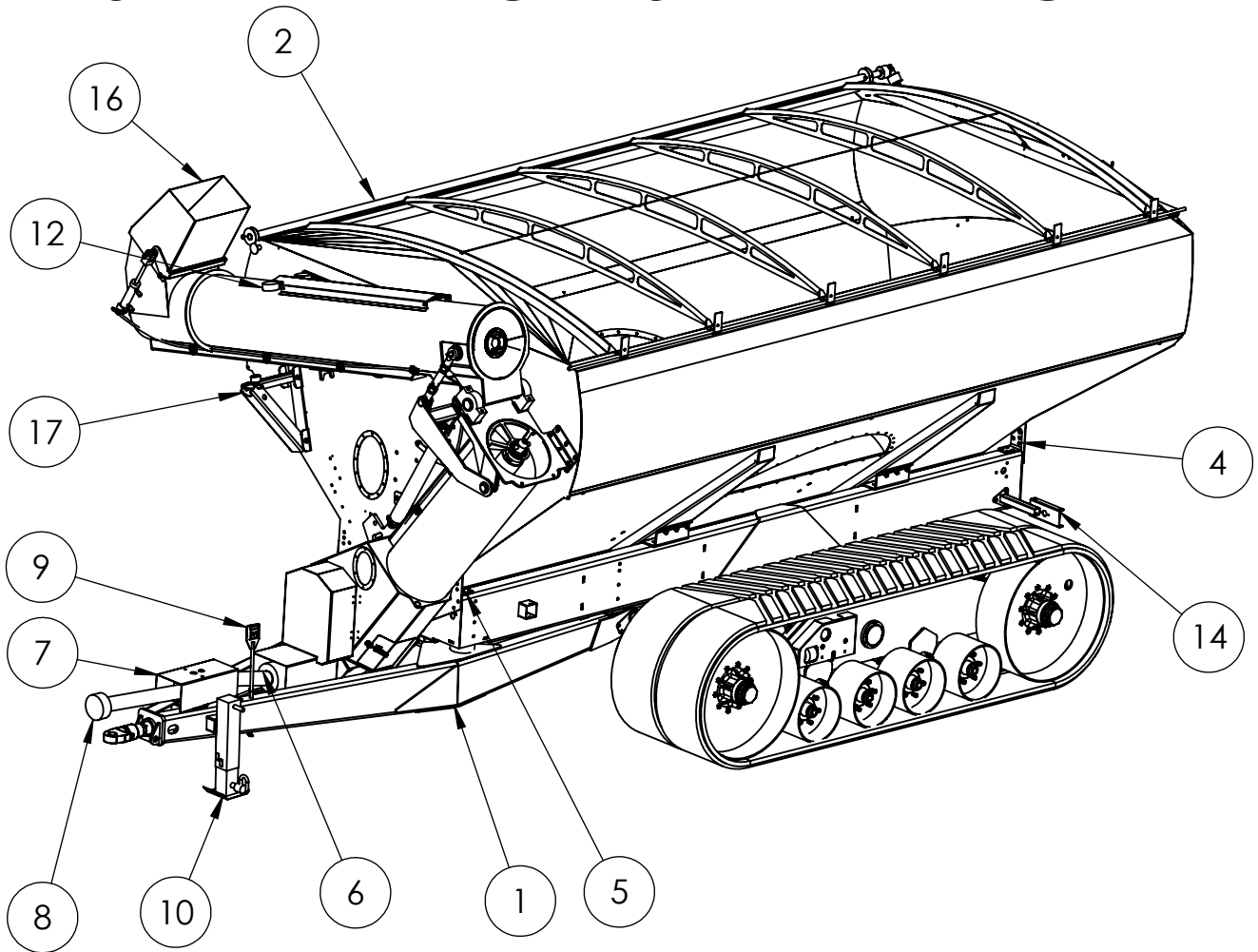


**FROM: 12016 CB TO 14416**

**DAVIMAC**  
MANUFACTURING

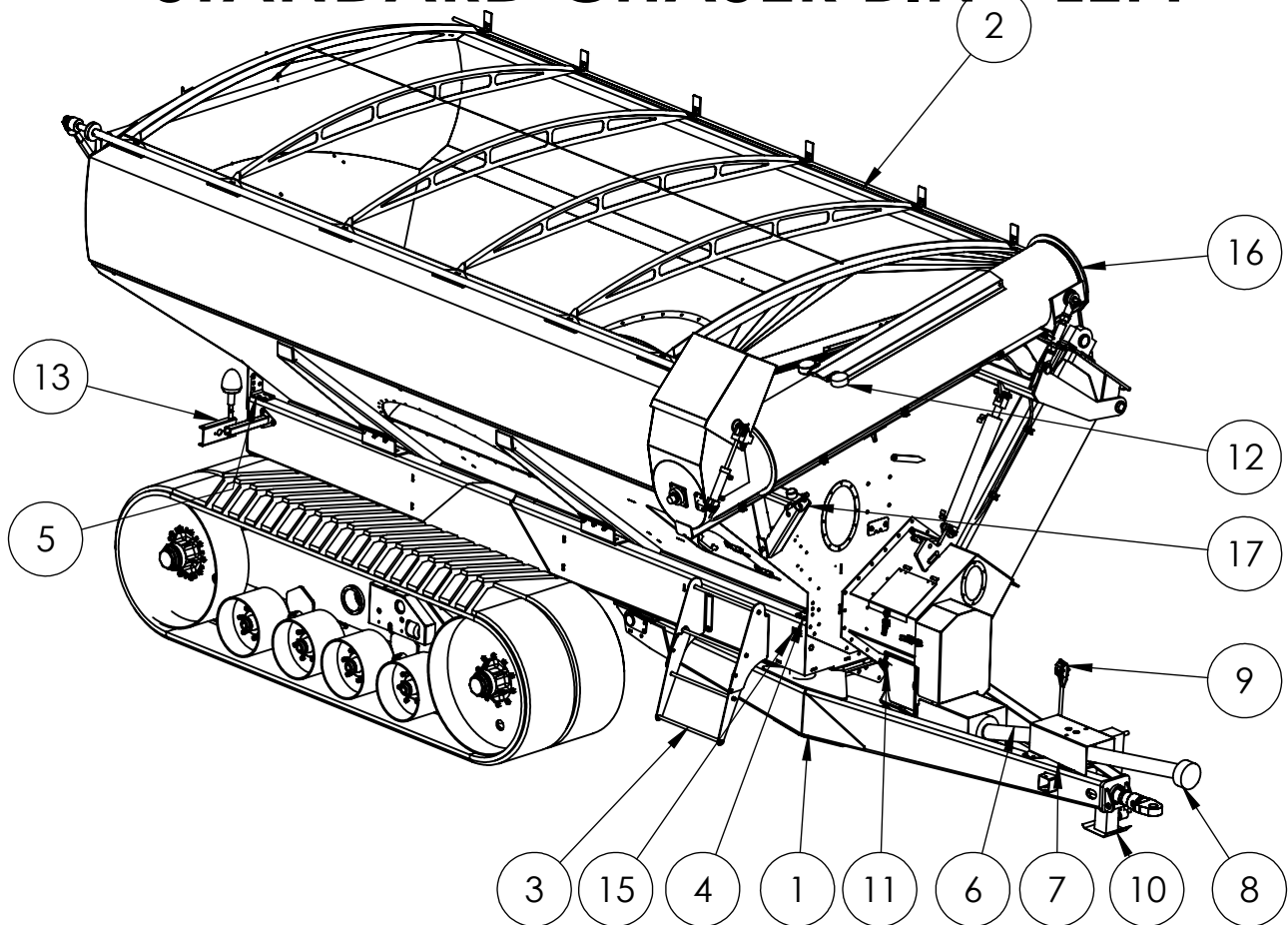
DAVIMAC PTY LTD  
55 WELINGTON STREET  
MOLONG NSW

# STANDARD CHASER BIN - RIGHT



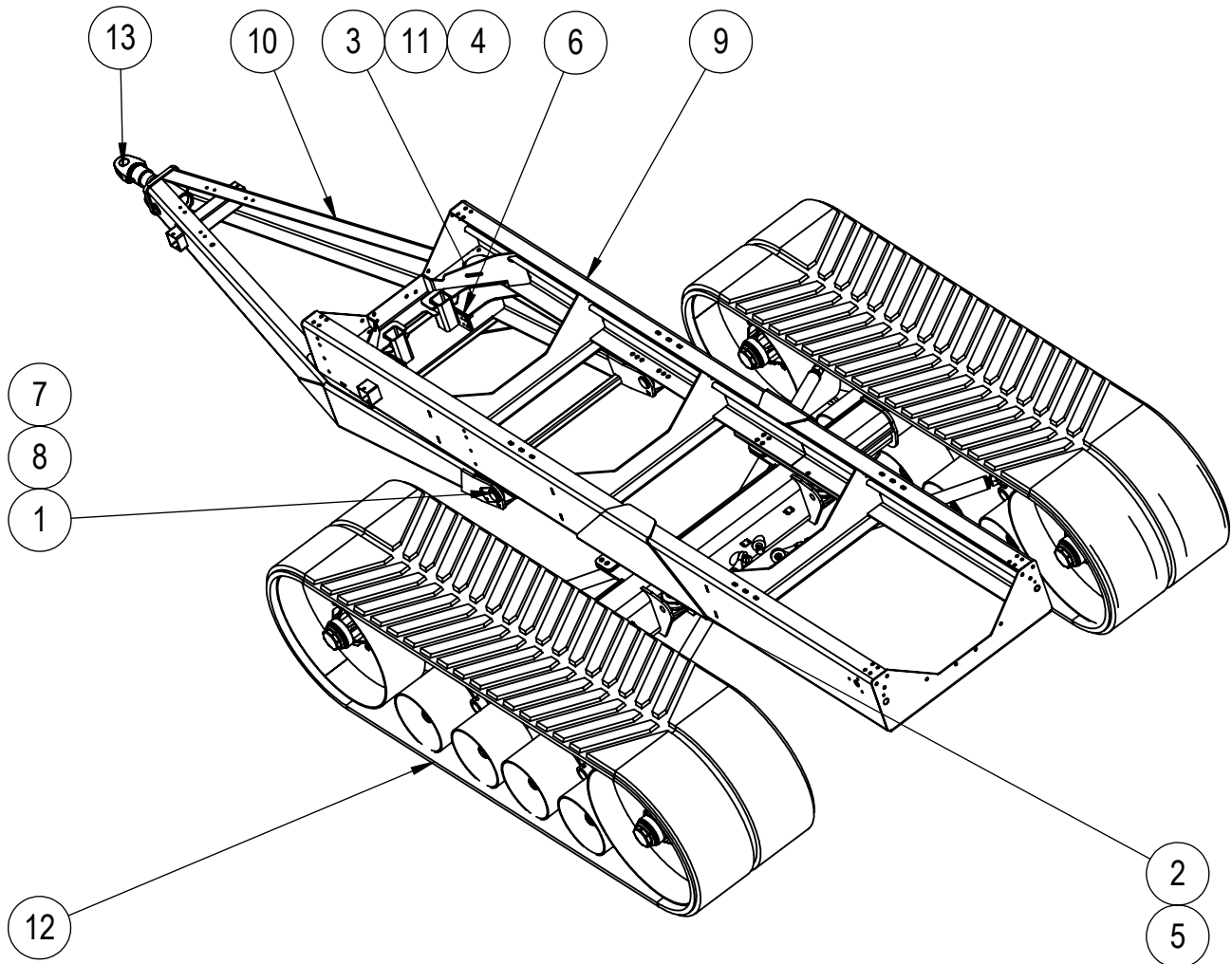
ITEM NO.	PART NUMBER	DESCRIPTION	QTY	PAGE
1	0231003	CHASSIS	1	3-11
2	0231018	BIN ASSEMBLY	1	12-13
3	0220056	STEP BOLTED ASSEMBLY	1	-
4	0220052-01	BIN TO CHASSIS MOUNTING ANGLE TYPE 1	2	-
5	0220052-02	BIN TO CHASSIS MOUNTING ANGLE TYPE 2	2	-
6	0220022	REAR PTO SHAFT	1	-
7	0207033 0207091	PTO CONNECTOR HYDRAULIC DRIVE	1	23
8	0220031	FRONT PTO SHAFT	1	-
9	0220055	POGO STICK BOLTED ASSEMBLY	1	-
10	0217001	JACK STAND - B9696	1	-
12	0219001	LED FLOOD WORK LIGHT	2	-
13	0219005	TAIL LIGHT ASSEMBLY RH	1	24
14	0219002	TAIL LIGHT ASSEMBLY LH	1	24
16	0207200	AUGER ASSEMBLY	1	14-23
17	0207214	STANDARD AUGER SUPPORT	1	25
18	0231037	SCRAPER ASSEMBLY	1	26
19	0205082	GRAIN DUMP DOORS	2	27

# STANDARD CHASER BIN - LEFT



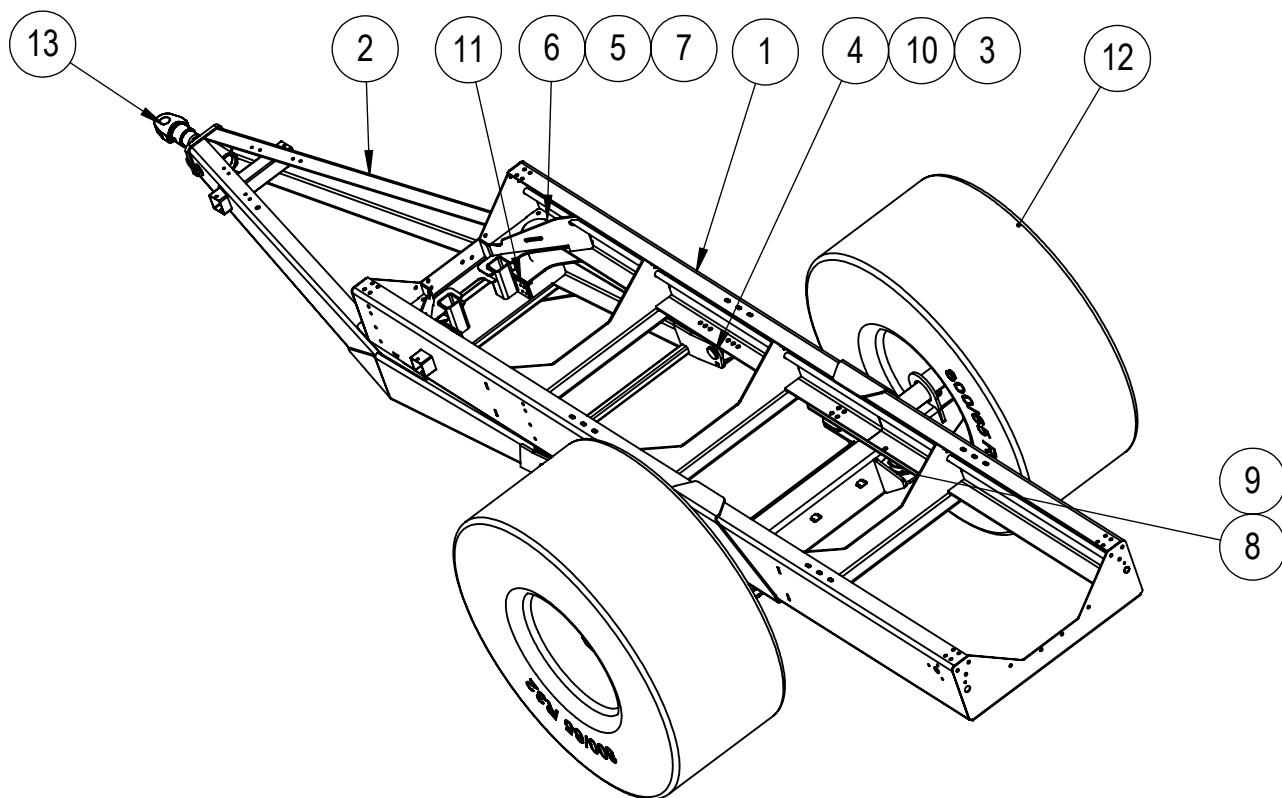
ITEM NO.	PART NUMBER	DESCRIPTION	QTY	PAGE
1	0231003	CHASSIS	1	3-11
2	0231018	BIN ASSEMBLY	1	12-13
3	0220056	STEP BOLTED ASSEMBLY	1	-
4	0220052-01	BIN TO CHASSIS MOUNTING ANGLE TYPE 1	2	-
5	0220052-02	BIN TO CHASSIS MOUNTING ANGLE TYPE 2	2	-
6	0220022	REAR PTO SHAFT	1	-
7	0207033 0207091	PTO CONNECTOR HYDRAULIC DRIVE	1	23
8	0220031	FRONT PTO SHAFT	1	-
9	0220055	POGO STICK BOLTED ASSEMBLY	1	-
10	0217001	JACK STAND - B9696	1	-
11	0208001	WEEL SOCKET	1	-
12	0219001	LED FLOOD WORK LIGHT	2	-
13	0219005	TAIL LIGHT ASSEMBLY RH	1	24
14	0219002	TAIL LIGHT ASSEMBLY LH	1	24
15	0220060	DAVIMAC SERIAL TAG	1	
16	0207200	AUGER ASSEMBLY	1	14-23
17	0207214	STANDARD AUGER SUPPORT	1	25
18	0231037	SCRAPER ASSEMBLY	1	26
19	0205082	GRAIN DUMP DOORS	2	27

# CHASSIS WITH TRACKS



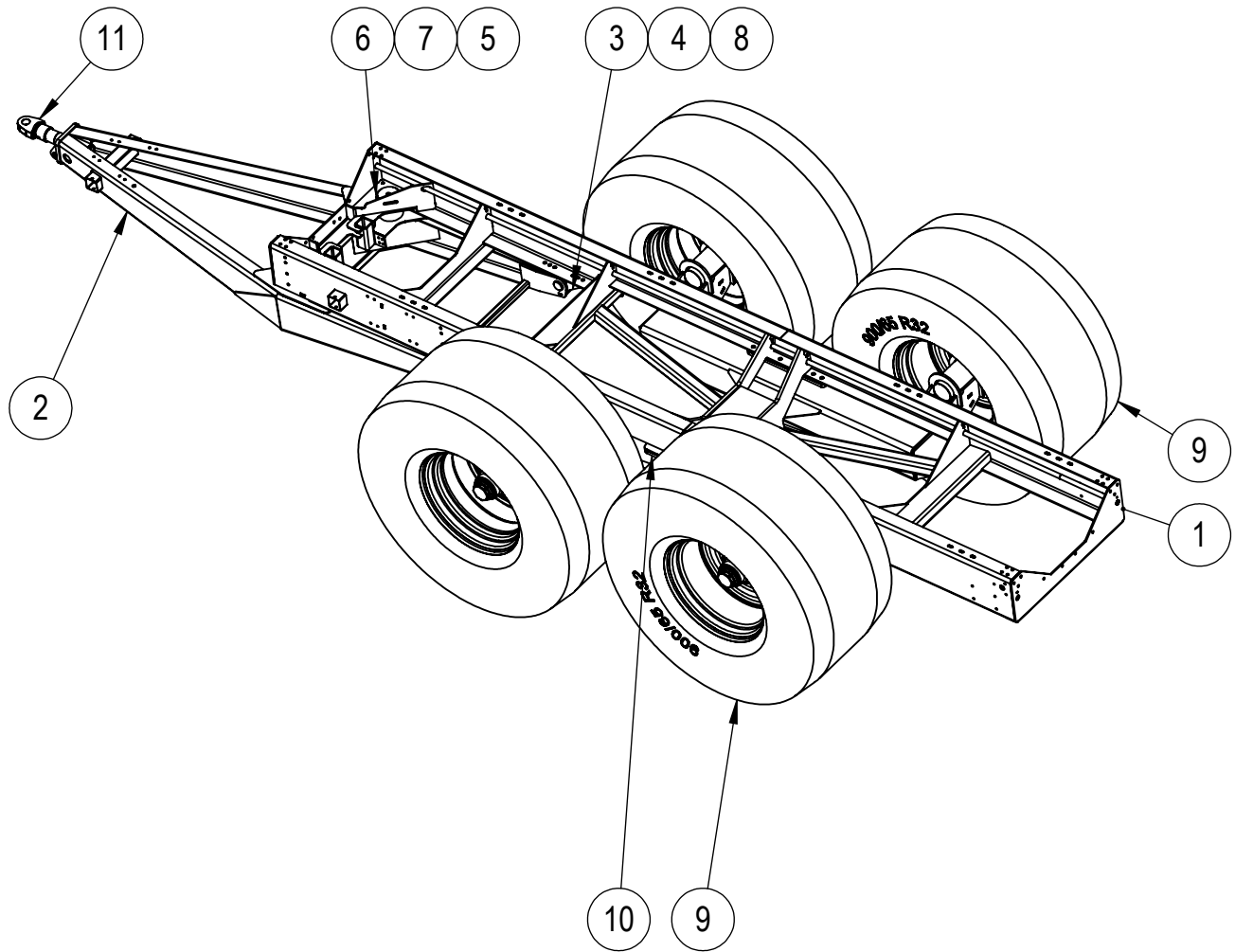
ITEM NO.	PART NUMBER	DESCRIPTION	QTY	PAGE
1	GSM-7580-40	BUSH	4	-
2	2526007	LOAD CELL MT703 T50	2	-
3	0220062-02	50mm RUBBER CUSHION	2	-
4	0220062-01	110mm RUBBER CUSHION	2	-
5	0204034	LOAD CELL REPLACEMENT SPACER	2	-
6	0202033-01	NYLON WEAR PLATE	2	-
7	0202035	HINGE PIN	2	-
8	0202023	HINGE BRACKET WELDED ASSEMBLY	2	-
9	0202022	CHASSIS	1	-
10	0202021	HITCH	1	-
11	0202020-01	RUBBER HITCH SUSPENSION PLATE	2	-
12	0231004	TRACK AND AXEL ASSEMBLY	1	REFER TO TRACK SPARE PARTS
13	0202009	STANDARD TOW SWIVEL	1	6

# CHASSIS WITH WHEELS



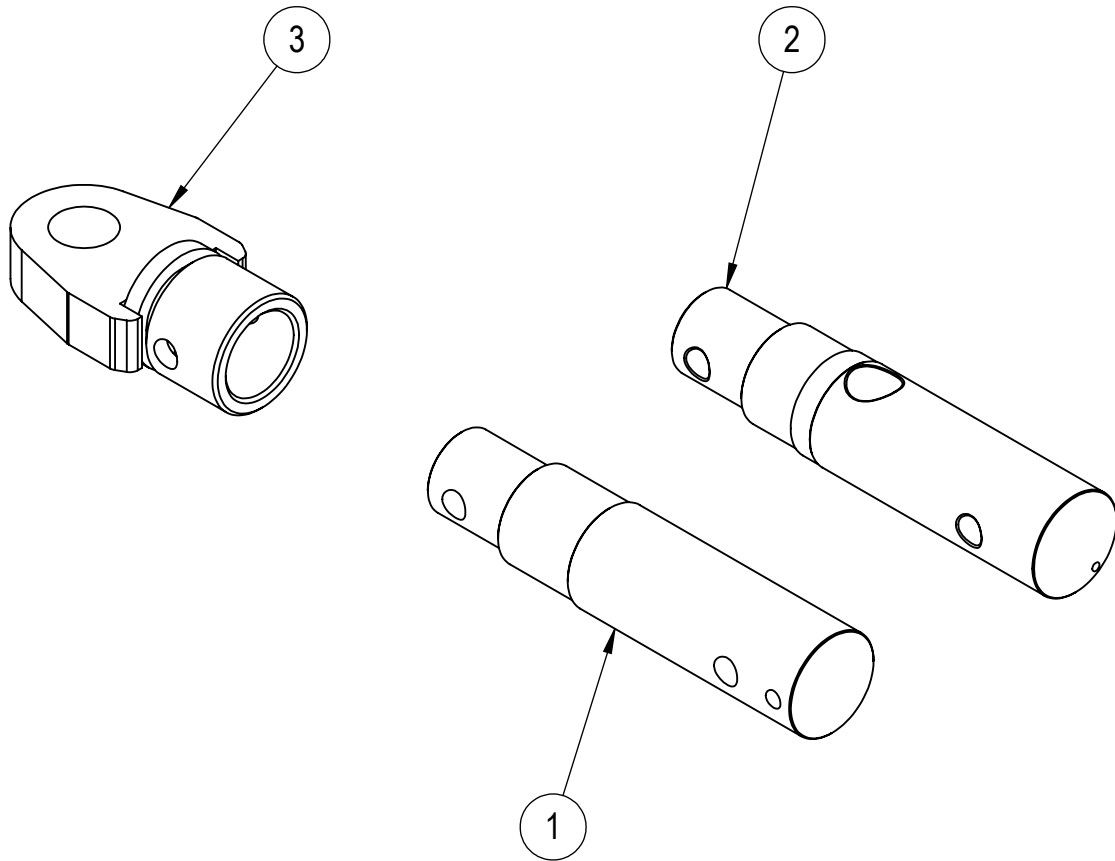
ITEM NO.	PART NUMBER	DESCRIPTION	QTY	PAGE
1	0202022	CHASSIS	1	-
2	0202021	HITCH	1	-
3	0202023	HINGE BRACKET WELDED ASSEMBLY	2	-
4	0202035	HINGE PIN	2	-
5	0220062-01	110mm RUBBER CUSHION	2	-
6	0220062-02	50mm RUBBER CUSHION	2	-
7	0202020-01	RUBBER HITCH SUSPENSION PLATE	2	-
8	2526007	LOAD CELL MT703 T50	2	-
9	0204034	LOAD CELL REPLACEMENT SPACER	2	-
10	GSM-7580-40	BUSH	4	-
11	0202033-01	NYLON WEAR PLATE	2	-
12	0231006	WHEEL AND AXEL ASSEMBLY	1	7
13	0202009	STANDARD TOW SWIVEL	1	6

# CHASSIS WITH DUAL WHEELS



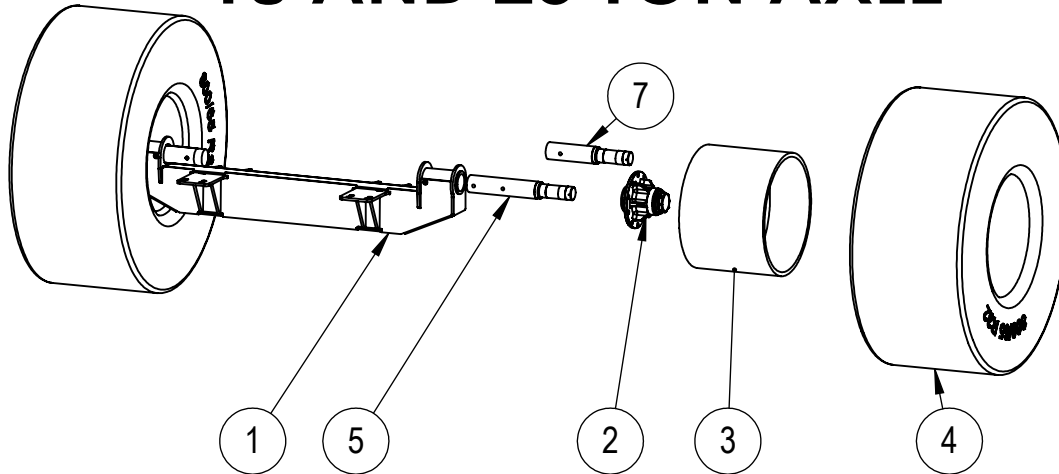
ITEM NO.	PART NUMBER	DESCRIPTION	QTY	PAGE
1	0202038	CHASSIS	1	
2	0202021	HITCH	1	
3	0202023	HINGE BRACKET WELDED ASSEMBLY	2	
4	0202035	HINGE PIN	2	
5	0220062-01	110mm RUBBER CUSHION	2	
6	0220062-02	50mm RUBBER CUSHION	2	
7	0202020-01	RUBBER HITCH SUSPENSION PLATE	2	
8	GSM-7580-60	BUSH	4	
9	0204049	DUAL AXLE ASSEMBLY	2	8
10	0204043	DUAL AXLE MOUNTING	2	
11	0202009	HITCH PULL ASSEMBLY	1	6

# TOW SWIVEL



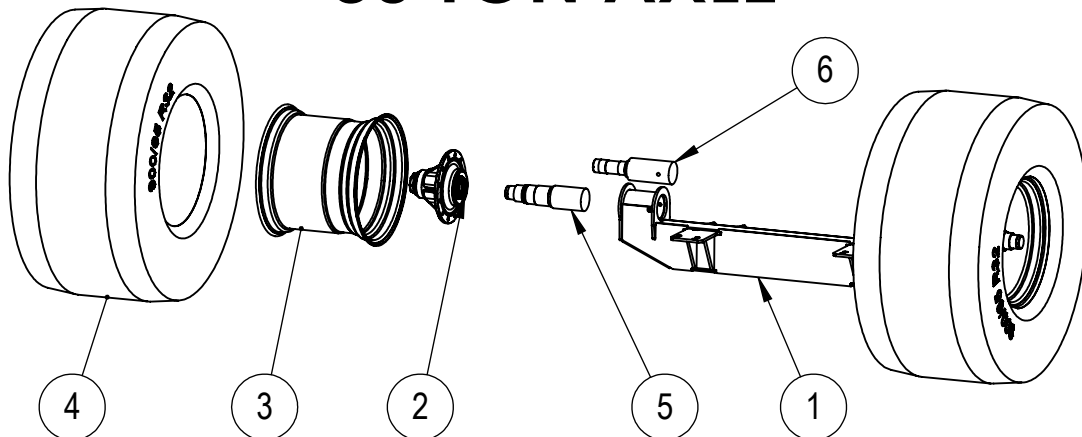
ITEM NO.	PART NUMBER	DESCRIPTION	QTY	PAGE
1	0202009-01	TOW SHANK	1	
2	0202009-10	LOAD CELL	1	
3	0231040	TOW EYES	1	

# 18 AND 25 TON AXLE



ITEM NO.	PART NUMBER	DESCRIPTION	20 TON QTY	18TON QTY	PAGE
1	0204033	18 AND 25 TON AXLE	1	1	
2	0231007	10 STUD HUB	2	2	9
3	2201002-32R	RIM	2	2	
4	2202009	800mm TYRE	2	-	
5	2203020-01	18 AND 25 TON STUB AXLE 3m	2	2	
6	2202006	30.5 TYRE	-	2	
7	2203020-01	18 AND 25 TON STUB AXLE STANDARD	2	2	

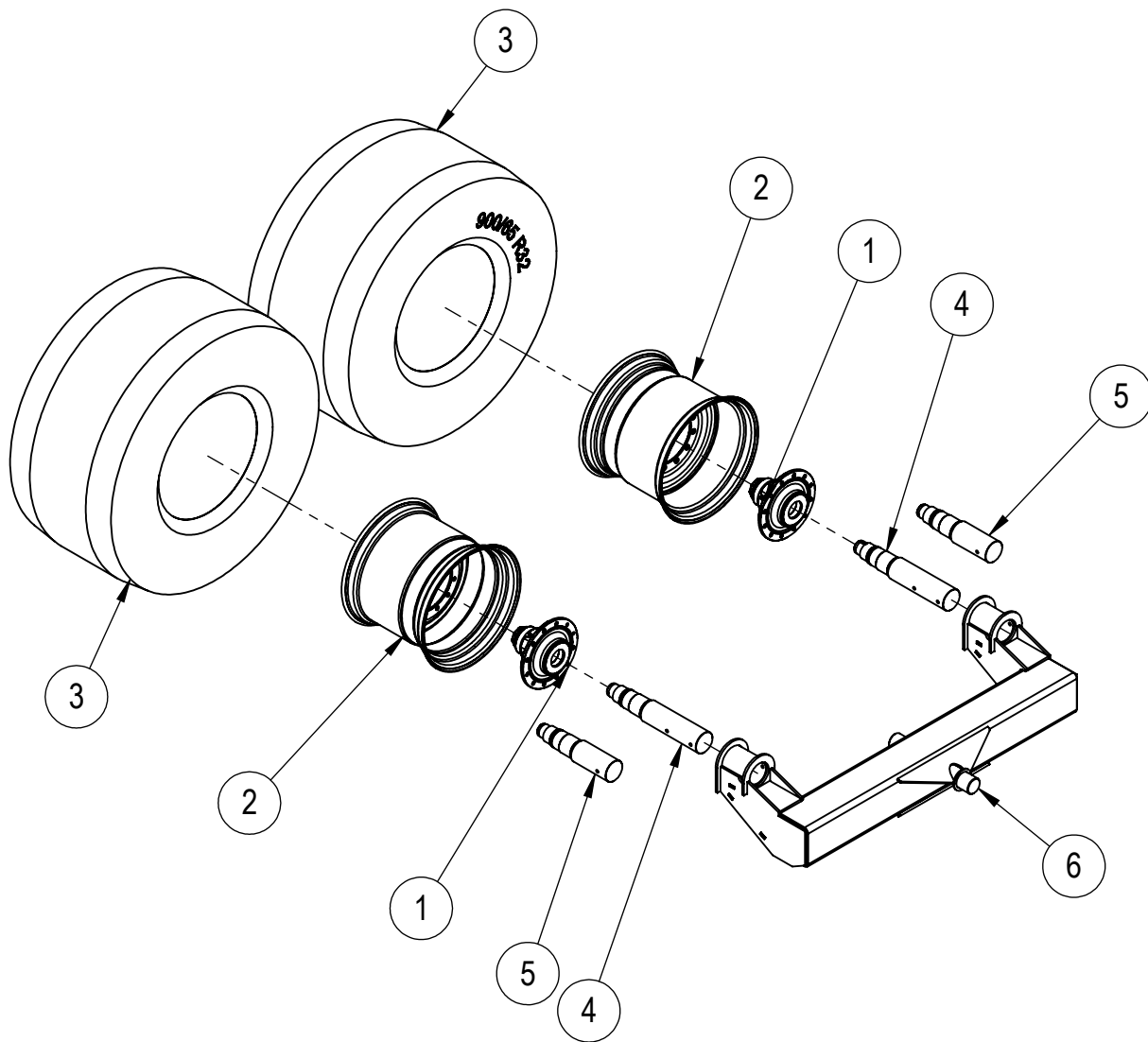
# 30 TON AXLE



ITEM NO.	PART NUMBER	DESCRIPTION	QTY	PAGE
1	0204036	30 TON AXLE FOR WHEELS	1	-
2	0231009	12 STUD HUB	2	10
3	2201007_32R	RIM	2	-
4	2202004	900mm TYRE	2	-
5	2203008-01	30 TON STUB AXLE 3m	2	-
6	0231008-01	30 TON STUB AXLE STANDARD	2	

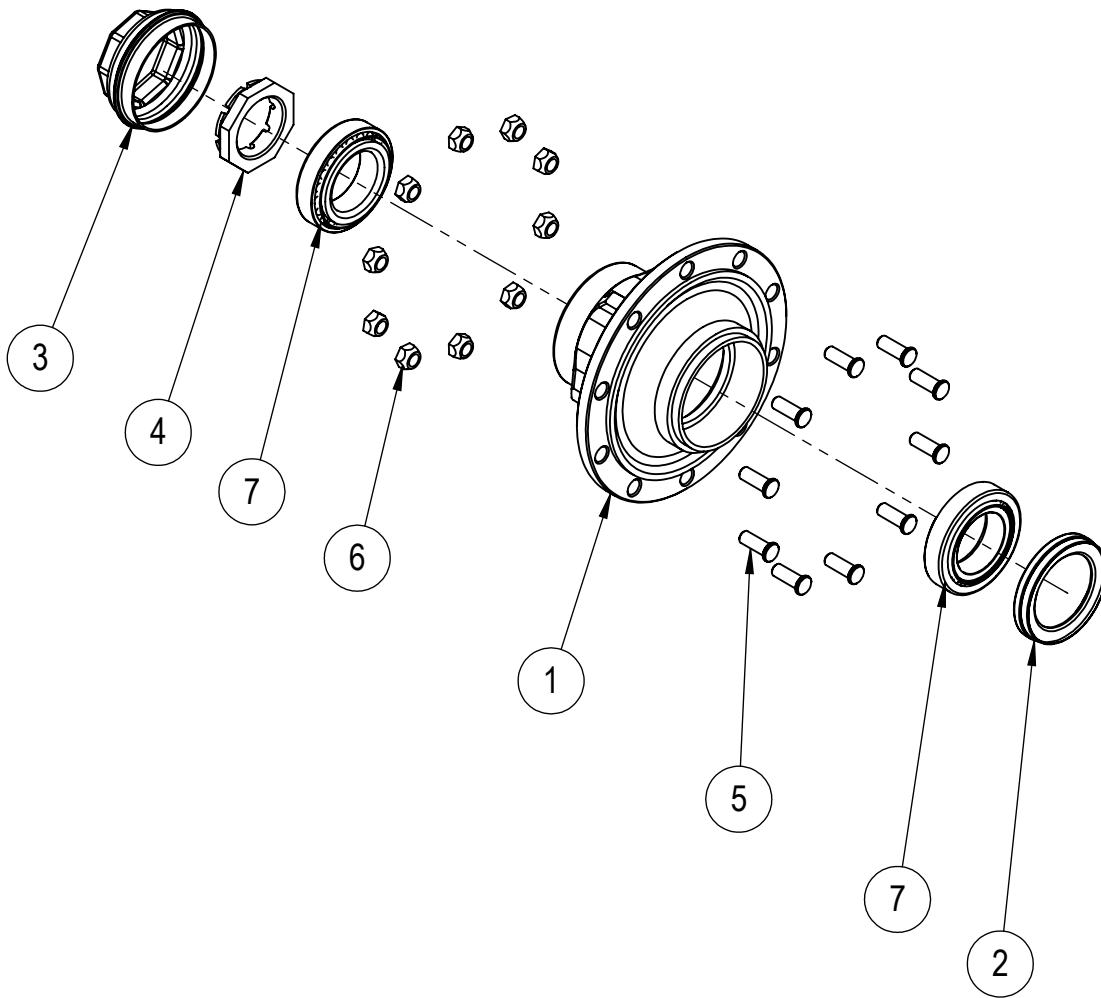


# DUAL AXLE



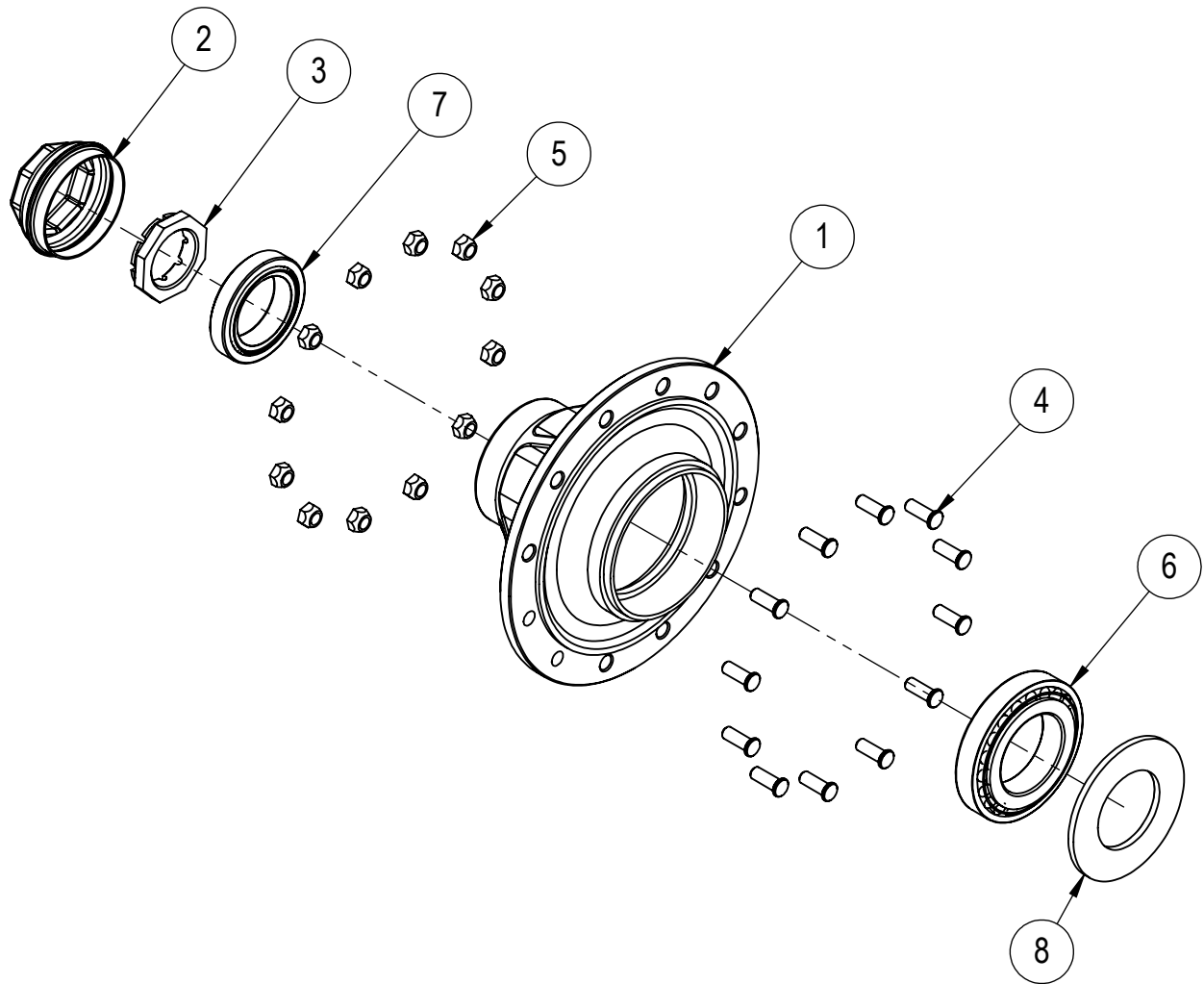
ITEM NO.	PART NUMBER	DESCRIPTION	QTY	PAGE
1	0231009	12 STUD HUB	2	10
2	2201007_32R	RIM	2	
3	2202004	900mm TYRE	2	
4	0231025-02	30/35 TON STUB AXLE 3m	2	
5	0231025-01	30/35 TON STUB AXLE STANDARD	2	
6	0204050	DUAL AXLES WELDED ASSEMBLY	1	

# 10 STUD HUB



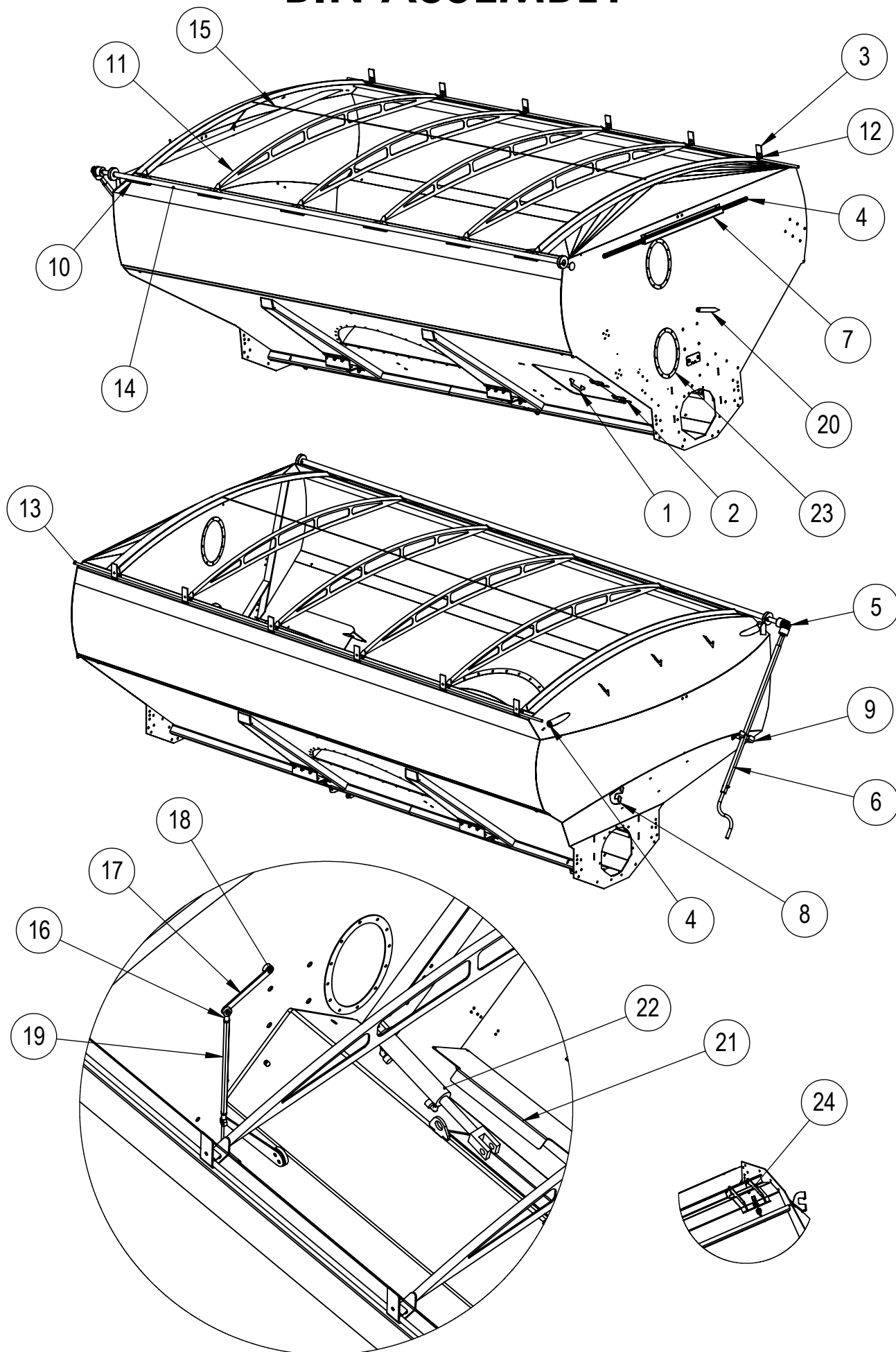
ITEM NO.	PART NUMBER	DESCRIPTION	QTY	PAGE
1	2203006-03	STANDARD HUB	1	
2	2203006-06	SEAL	1	
3	2203006-08	HUB CAP	1	
4	2203006-07	CROW NUT	1	
5	2203006-04	STANDARD STUD	10	
6	2203006-05	WHEEL NUT	10	
7	2203006-09	BEARING	2	

# 12 STUD HUB



ITEM NO.	PART NUMBER	DESCRIPTION	QTY	PAGE
1	2203007-02	HUB	1	
2	2203027-01	HUB CAP	1	
3	2203027-02	CROWN NUT	1	
4	2203006-04	STANDARD STUD	12	
5	2203006-05	WHEEL NUT	12	
6	2203018	BEARING	1	
7	2203019	BEARING	1	
8	2203021	SEAL	1	

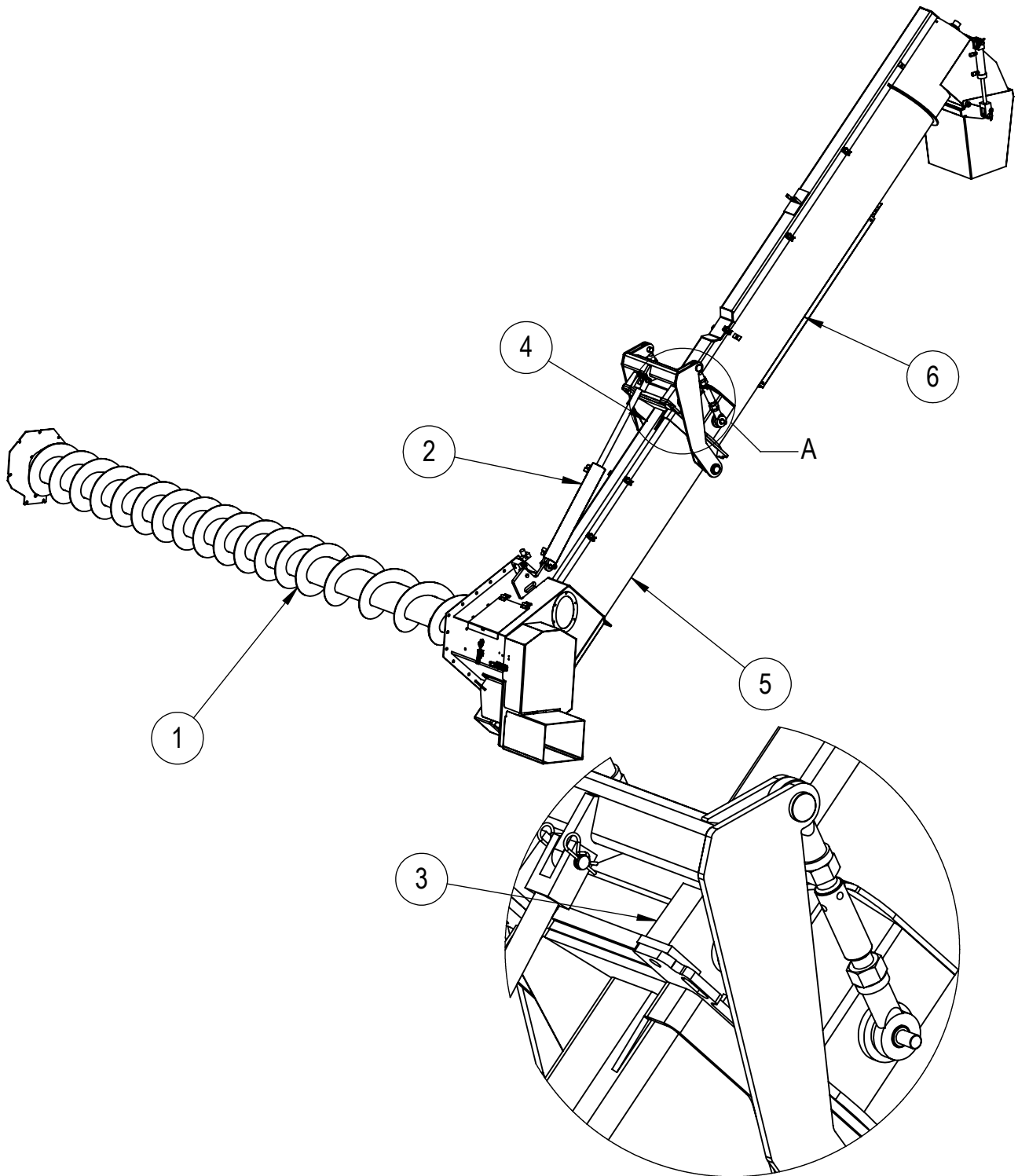
# BIN ASSEMBLY



# BIN ASSEMBLY PARTS LIST

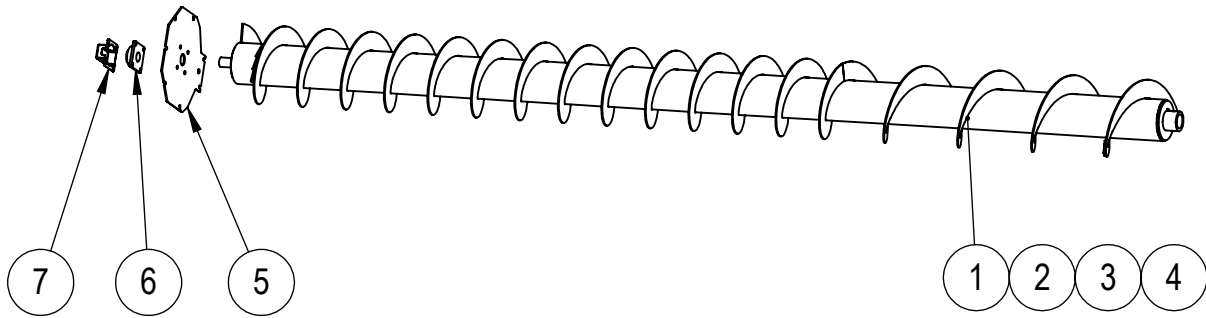
ITEM NO.	PART NUMBER	DESCRIPTION	QTY	PAGE
1	0214028	ACCESS DOOR WELDED ASSEMBLY	1	-
2	2510002	UTE LATCHES	2	-
3	0215002-01	TARP CATCHER	2	-
4	0220024	TARP SPRING	2	-
5	2513001	TARP UNIVERSAL JOINT	1	-
6	0215006	TARP ROLLER HANDLE	1	-
7	0215009-01	SPRING COVER	1	-
8	0215013-02	TARP ROLLER HANDLE HOLDER LH	1	-
9	0215013-01	TARP ROLLER HANDLE HOLDER RH	1	-
10	0215002-04	PLATE	2	-
11	0215001	TARP SUPPORT BRACE	4	-
12	0215002-03	TARP CLAMP	6	-
13	0215002-02	TARP RETAINING ROD	1	-
14	0215003	TARP ROLL	1	-
15	0205060-25	4mm WIRE ROPE ASSEMBLY	1	-
16	2603001	METRIC FEMALE NARROW RODEND M12 (S112C)	2	-
17	0218001-02	POINTER LINK PLATE	1	-
18	0218002-01	SPACER	1	-
19	0214082-01	HEX BAR	1	-
20	0218001-01	POINTER	1	-
21	0214080-03	INSPECTION DOOR	1	-
22	0231021	GRAIN FLOW DOOR HYDRAULIC RAM	1	-
23	0205087	WINDOW AND FRAME ASSEMBLY	2	-
24	0205082	GRAIN DUMP DOORS	2	-

# AUGER ASSEMBLY



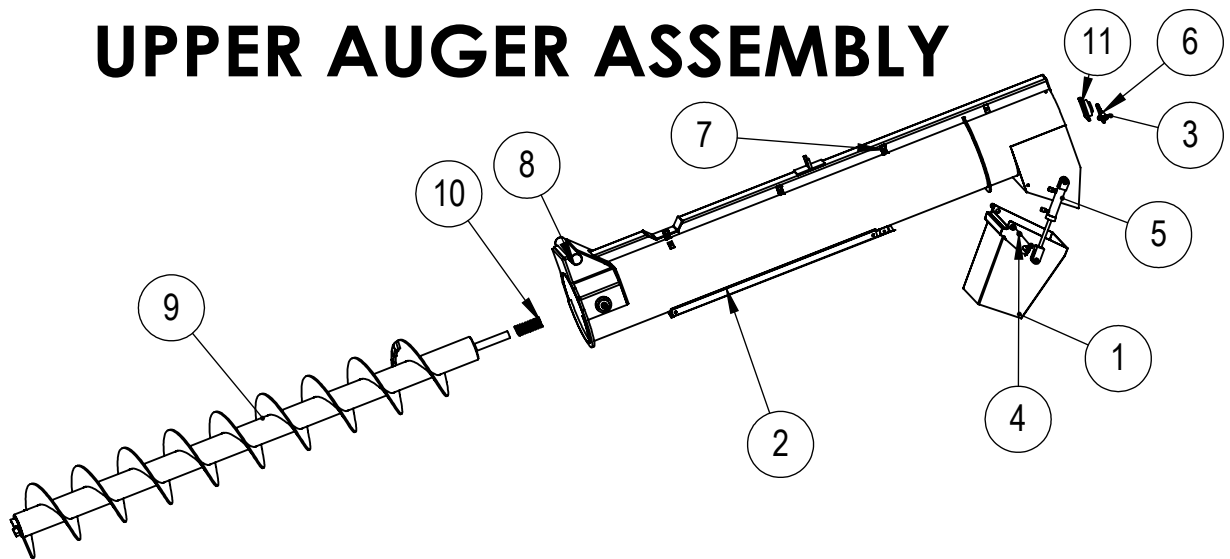
ITEM NO.	PART NUMBER	DESCRIPTION	QTY	PAGE
1	0231011	CROSS AUGER	1	14
2	0231031	HYDRAULIC CYLINDER ASSEMBLY	1	17
3	UCSBX15	PILLOW BLOCK	2	-
4	0207021-09	MOUNTING PLATE	1	-
5	0231028	LOWER AUGER AND ATTACHMENTS	1	15
6	0231029	UPPER AUGER ASSEMBLY	1	14

# CROSS AUGER



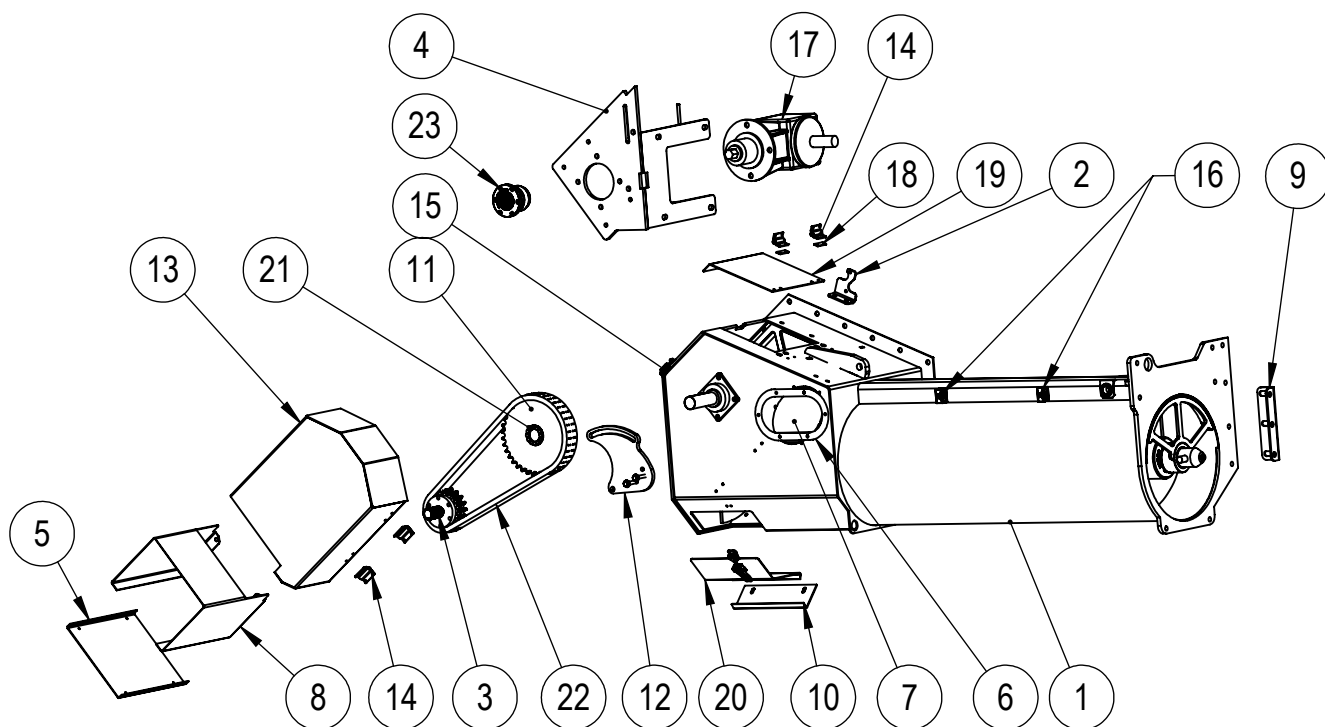
ITEM NO.	PART NUMBER	DESCRIPTION	QTY	PAGE
1	0207086	35 TON CROSS AUGER ASSEMBLY	1	-
2	0207081	30TON CROSS AUGER ASSEMBLY	1	-
3	0207023	25 TON CROSS AUGER ASSEMBLY	1	-
4	0207079	18 TON CROSS AUGER ASSEMBLY	1	-
5	0207020-03	AUGER END PLATE	1	-
6	UCF210	UCF210	1	-
7	0207020-05	SHAFT PROTECTION COVER	1	-

# UPPER AUGER ASSEMBLY



ITEM NO.	PART NUMBER	DESCRIPTION	QTY	PAGE
1	0207224	SPOUT WELDED ASSEMBLY	1	-
2	0207020-08	AUGER GUARD	1	-
3	2509002-02	4mm R CLIP	2	-
4	0220006-02	SPACER	2	-
5	2101002	HYDRAULIC CYLINDER B3085	1	-
6	0207030	UPPER CYLINDER LUG	1	-
7	RCD-15	PIPE CLAMP	3	-
8	0207202	UPPER AUGER BODY	1	-
9	0207222	UPPER AUGER STANDARD	1	-
10	0207019-08	UPPER AUGER SPRING	1	-
11	UCF210	FLANGE BEARING UCF210	1	-

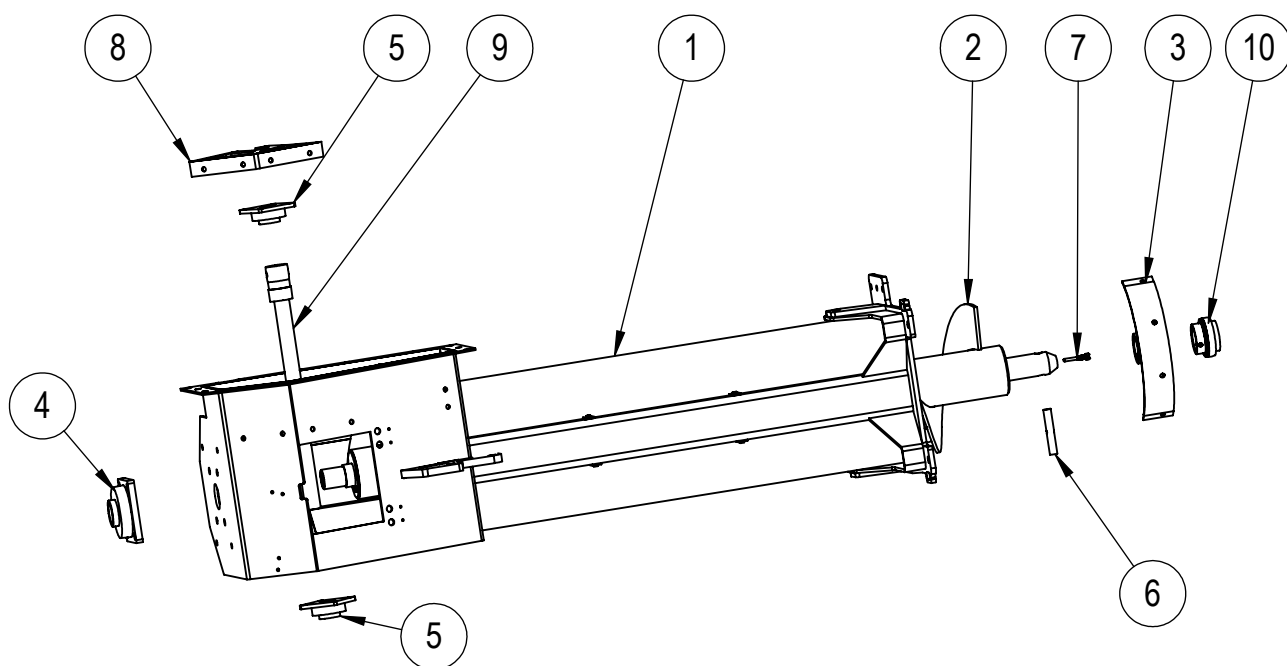
# LOWER AUGER AND ATTACHMENTS



ITEM NO.	PART NUMBER	DESCRIPTION	QTY	PAGE
1	0231016	LOWER AUGER ASSEMBLY	1	
2	0207020-02	HYDRAULIC REGULATOR MOUNTING BRACKET	1	-
3	0207024	DRIVE SPROCKET ASSEMBLY	1	-
4	0207025	GEARBOX MOUNTING WELDED ASSEMBLY	1	-
5	0207020-04	CHAIN PROTECTION COVER LID	1	-
6	0207020-06	WINDOW HOLDING RING	2	-
7	0207078	WINDOW PERSPEX 6MM THICK (AUGER)	1	-
8	0207020-07	CHAIN PROTECTION COVER	1	-
9	0207021-09	MOUNTING PLATE	1	-
10	0207021-13	DOOR MOUNTING PLATE	1	-
11	0207087	SPROCKET MACHINING	1	-
12	0207034	CHAIN TENSIONER ASSEMBLY	1	-
13	0207035	UPPER CHAIN COVER	1	-
14	2501001	HINGE – BUTT	4	-
15	2510001	LARGE LATCH SH 28	2	-
16	RCD-15	PIPE CLAMP	2	-
17	0207077	GEARBOX	1	-
18	0207020-10	HINGE SPACER	2	-
19	0207021-07	INSPECTION HATCH	1	-
20	0207084	INSPECTION DOOR ASSEMBLY	1	-
21	Z6-50X80	Z6 SERIES LOCKING ASSEMBLY	1	-
22	0231012-01	CHAIN 1" PITCH 2 ROWS	1	-
23	0207313	GEARBOX DRIVE SLEEVE ASSY	1	

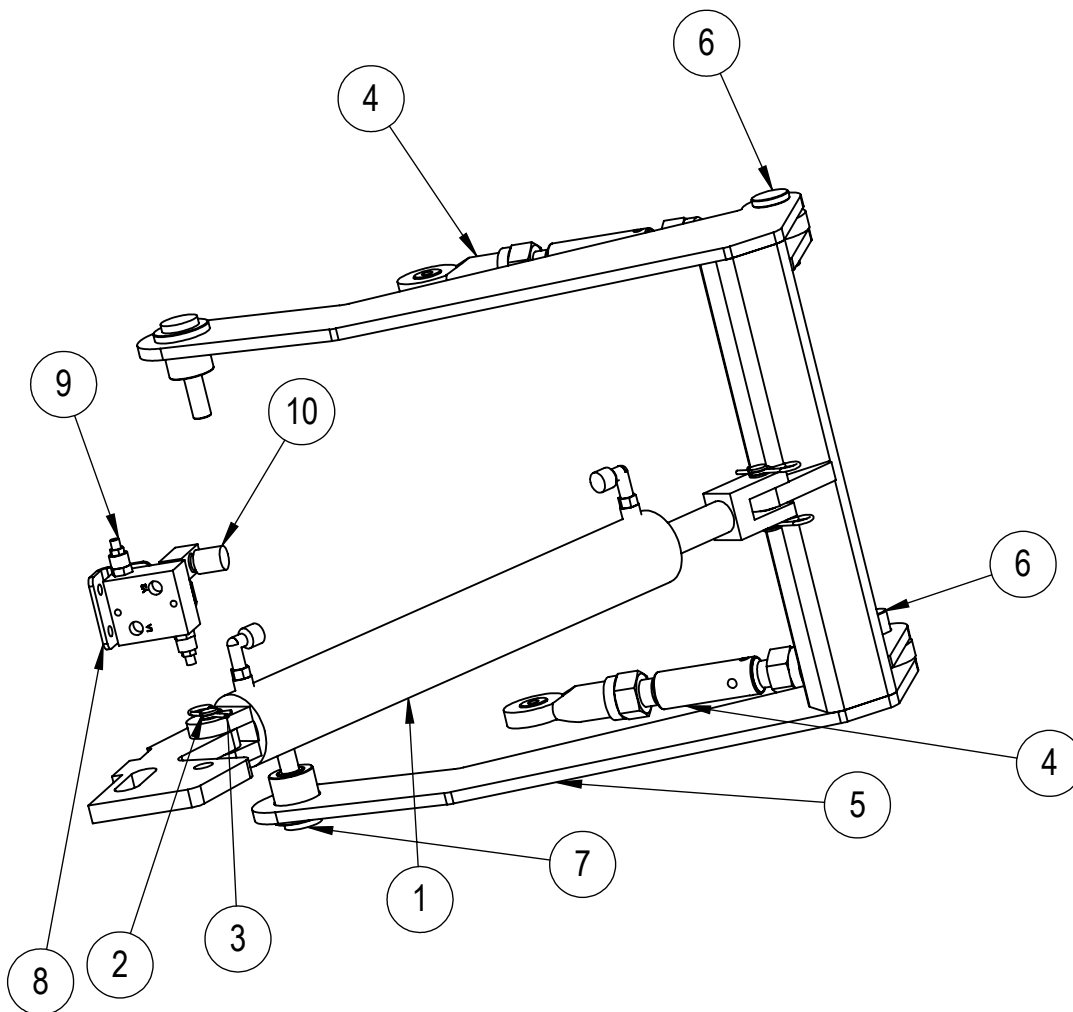


# LOWER AUGER ASSEMBLY



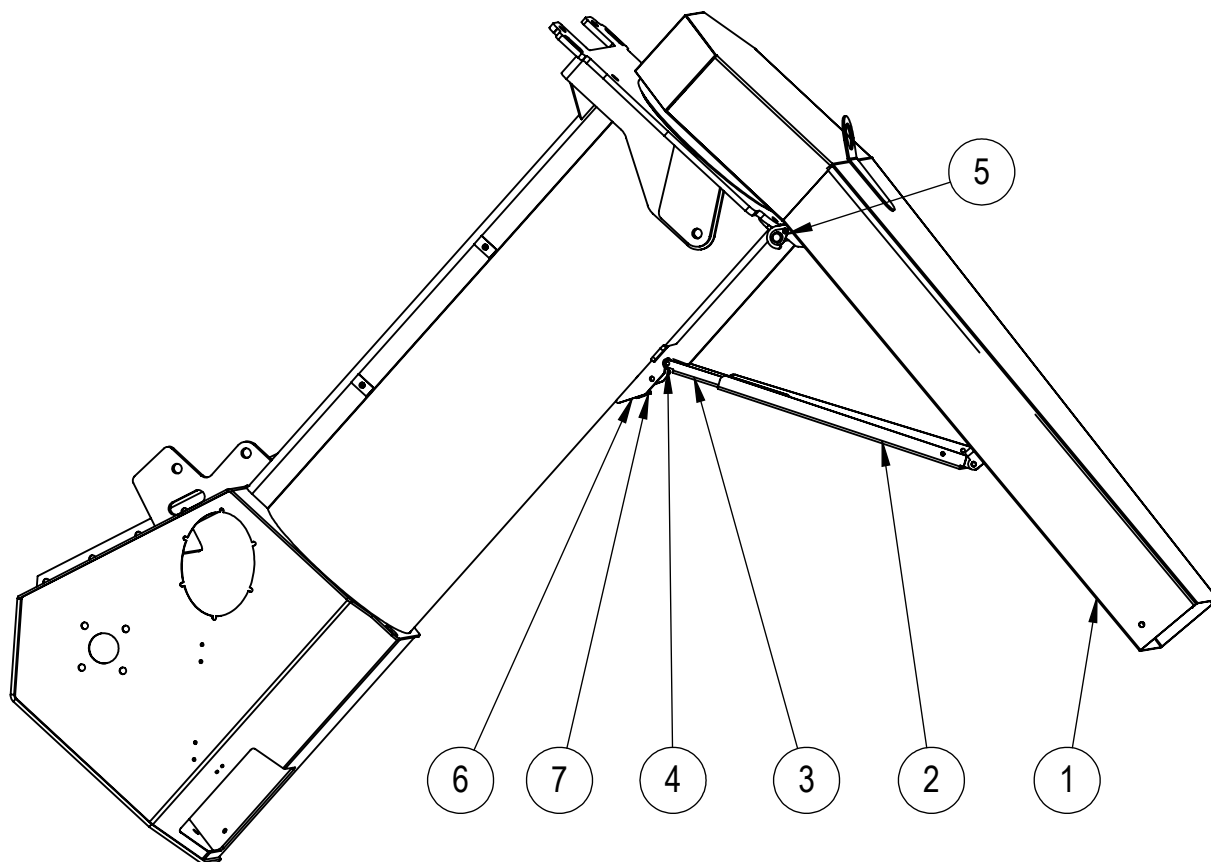
ITEM NO.	PART NUMBER	DESCRIPTION	QTY	PAGE
1	0207205	LOWER AUGER BODY	1	
2	0207206	LOWER AUGER	1	
3	0207135	AUGER CENTRALISING DEVICE	1	
4	2601009	FLANGE BEARING UCF 313	1	
5	UCF210	UCF210	2	
6	0207026-06	DRIVE PIN	1	
7	0207090	LOCATING PIN	1	
8	0207094	LOWER CENTRALISING DEVICE	1	
9	0207095	AUGER DRIVE SHAFT WELDED ASSEMBLY	1	
10	BEARING UC215-48	BEARING	1	

# HYDRAULIC CYLINDER ASSEMBLY



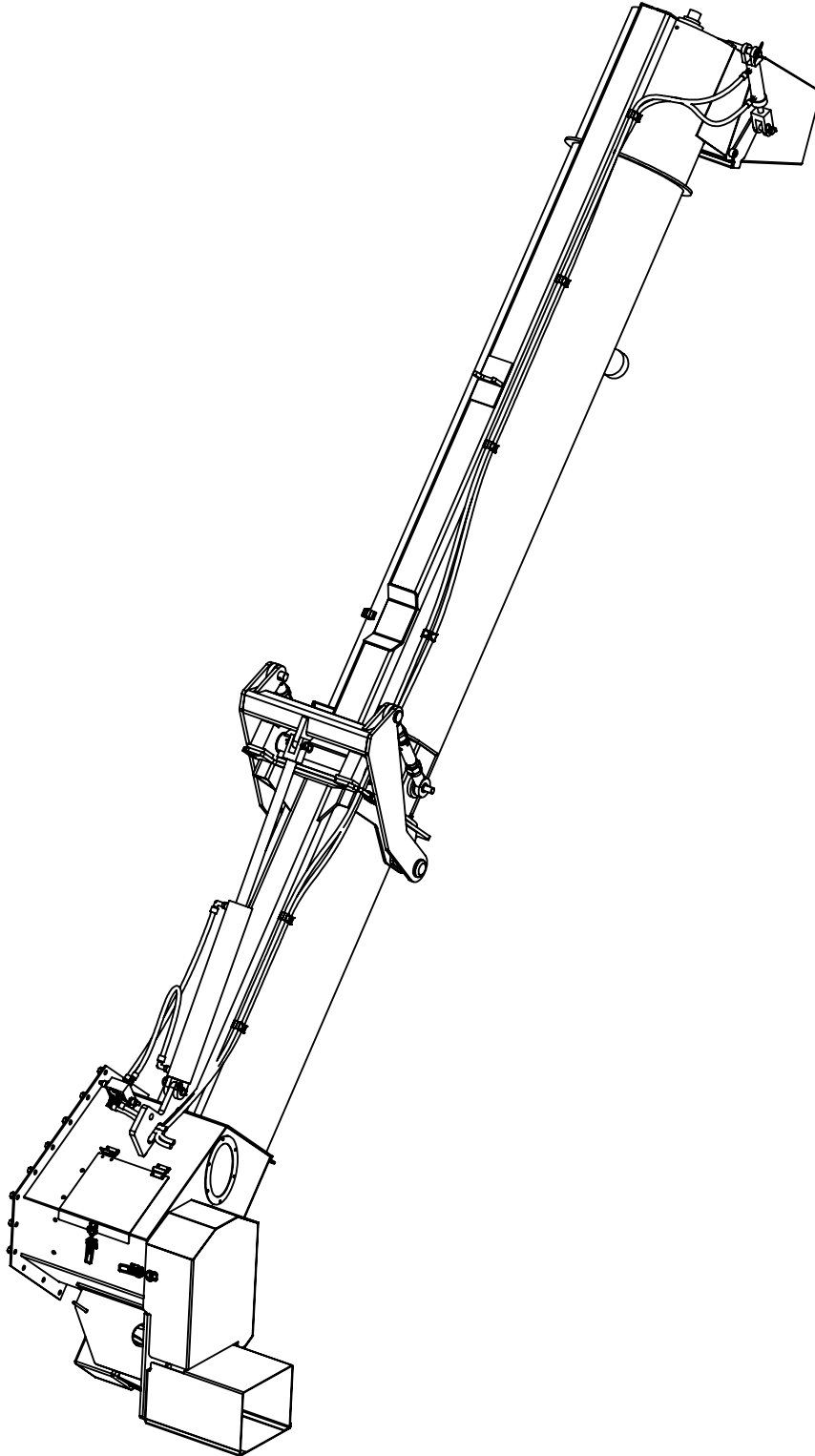
ITEM NO.	PART NUMBER	DESCRIPTION	QTY	PAGE
1	2101003 3x24	HYDRAULIC CYLINDER 3"BORE X 24" STROKE	1	
2	2508003	PIN HYD CYL - DIA 25.4mm	2	
3	2509002-03	5mm R CLIP	4	
4	0207208	AUGER ADJUSTABLE LINKAGE	2	
5	0207207	AUGER LEVER	1	
6	0207200-02	AUGER LINKAGE PIN	2	
7	0207200-01	AUGER LEVER PIN	2	
8	0207020-02	HYDRAULIC REGULATOR MOUNTING BRACKET	1	
9	0231031-02	DUAL RELIEF VALVE	1	
10	0231031-01	FLOW CONTROL VALVE	1	

# OPTIONAL AUGER ATTACHMENTS

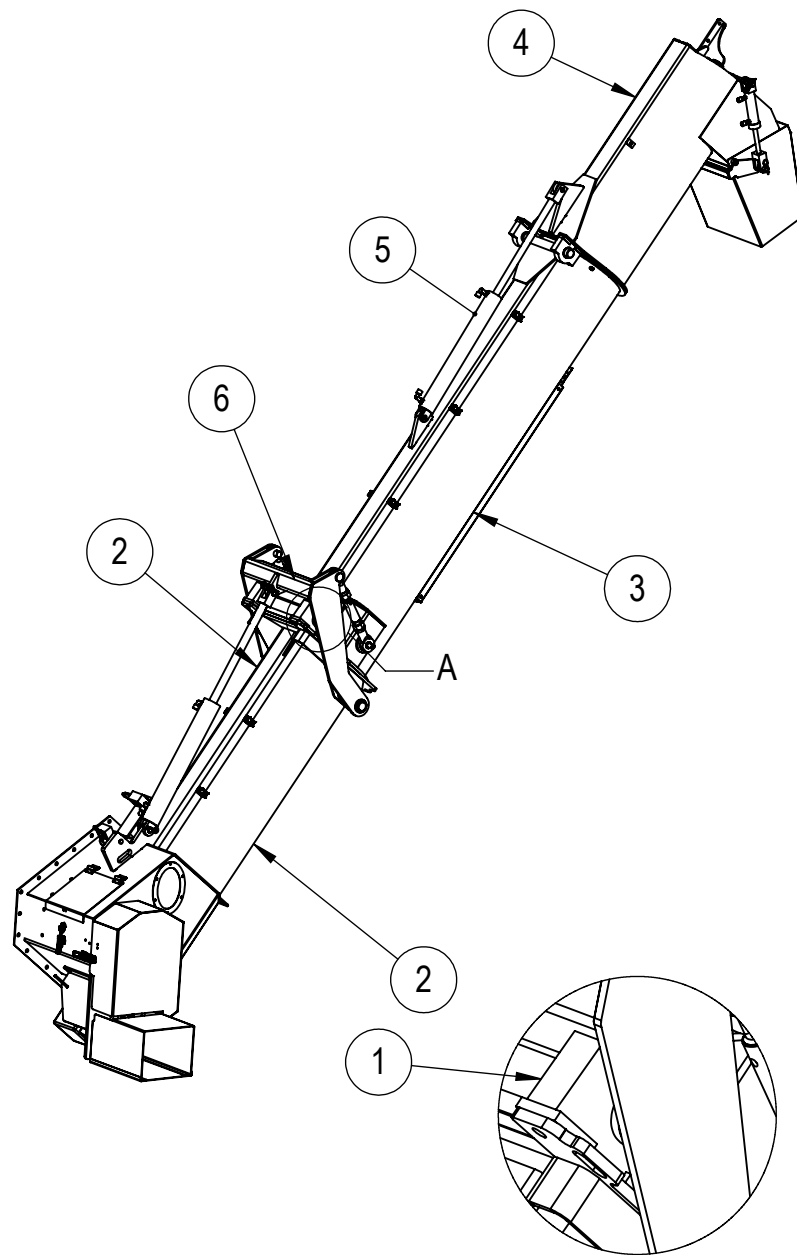


ITEM NO.	PART NUMBER	DESCRIPTION	QTY	PAGE
1	0228003	HOPPER SPOUT	1	-
2	0228001-01	OUTER STAY ARM	1	-
3	0228001-02	INNER STAY ARM	1	-
4	0228001-03	PLASTIC BUSH	1	-
5	0228001-04	STAY ARM MOUNTING BRACKET	2	-
6	0228002	SPOUT MOUNTING BRACKET	1	-
7	0228001-06	CATCH	1	-

# SINGLE FOLD HYDRAULIC PIPING

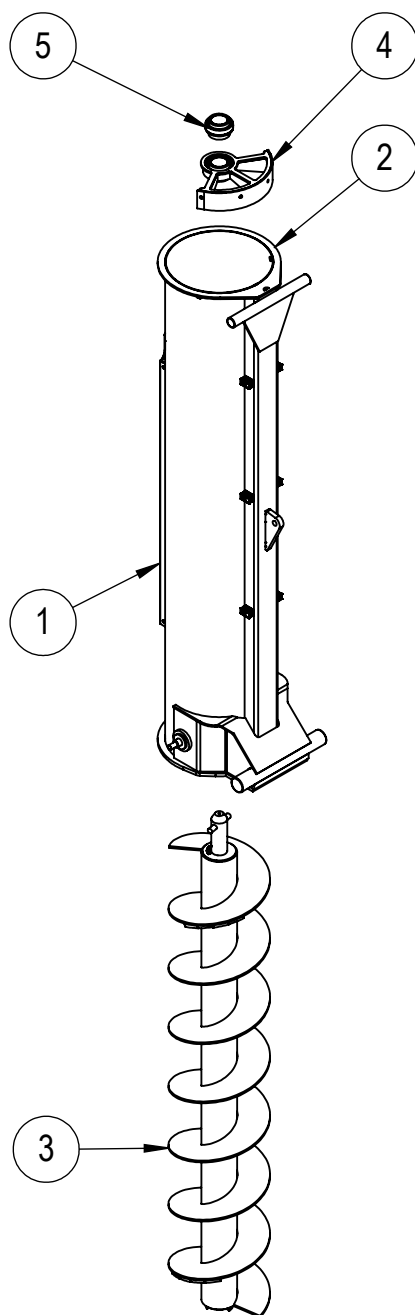


# OPTIONAL DUAL FOLD AUGER



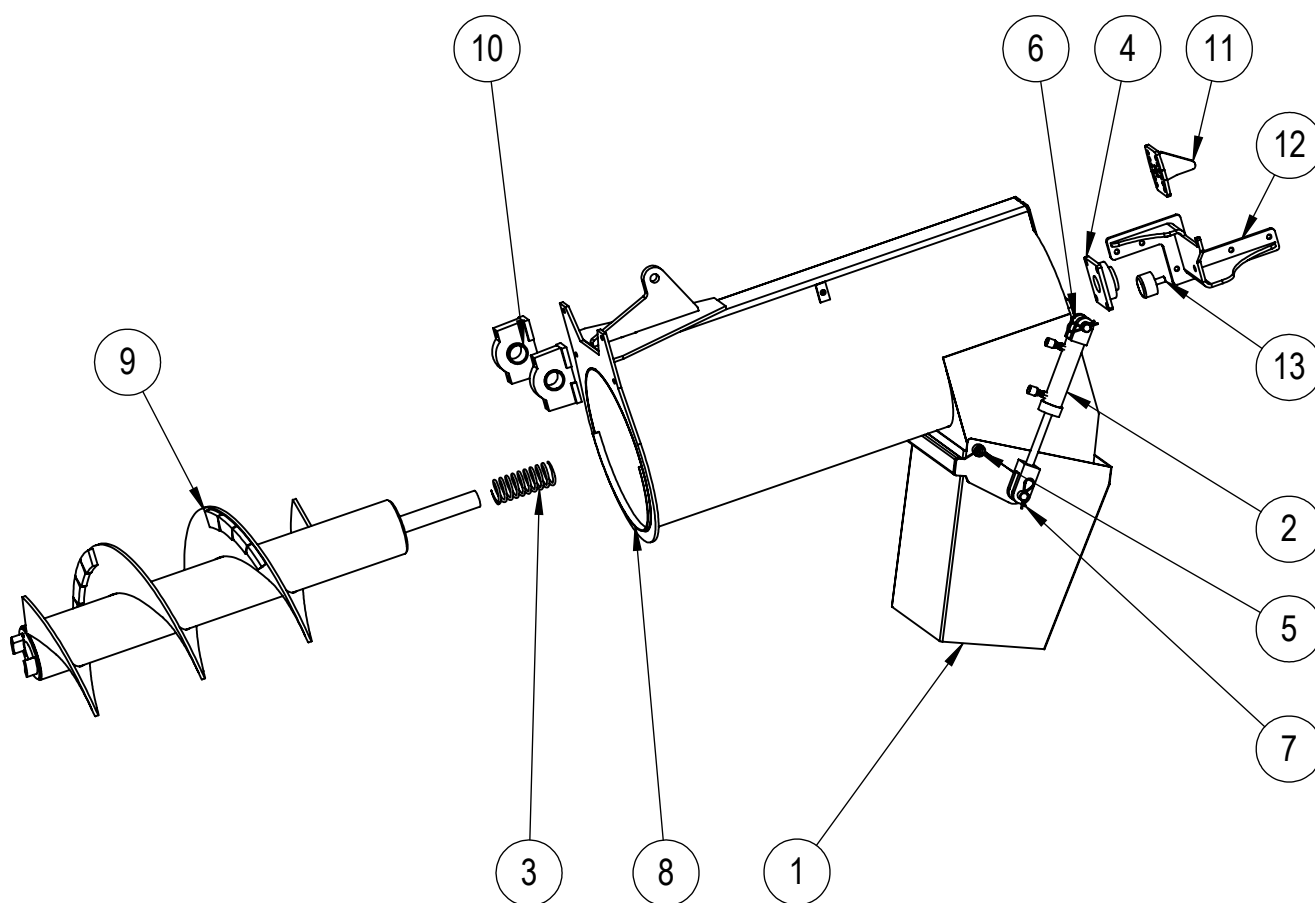
ITEM NO.	PART NUMBER	DESCRIPTION	QTY	PAGE
1	UCSBX15	PILLOW BLOCK	2	-
2	0231028	LOWER AUGER AND ATTACHMENTS	1	15
3	0231034	MID DUAL FOLD AUGER ASSEMBLY	1	20
4	0231035	UPPER DUAL FOLD AUGER	1	21
5	2001018	HYDRAULIC CYLINDER B3036	1	
6	0231041	HYDRAULIC CYLINDER ASSEMBLY	1	22

# DUAL FOLD MID AUGER ASSEMBLY



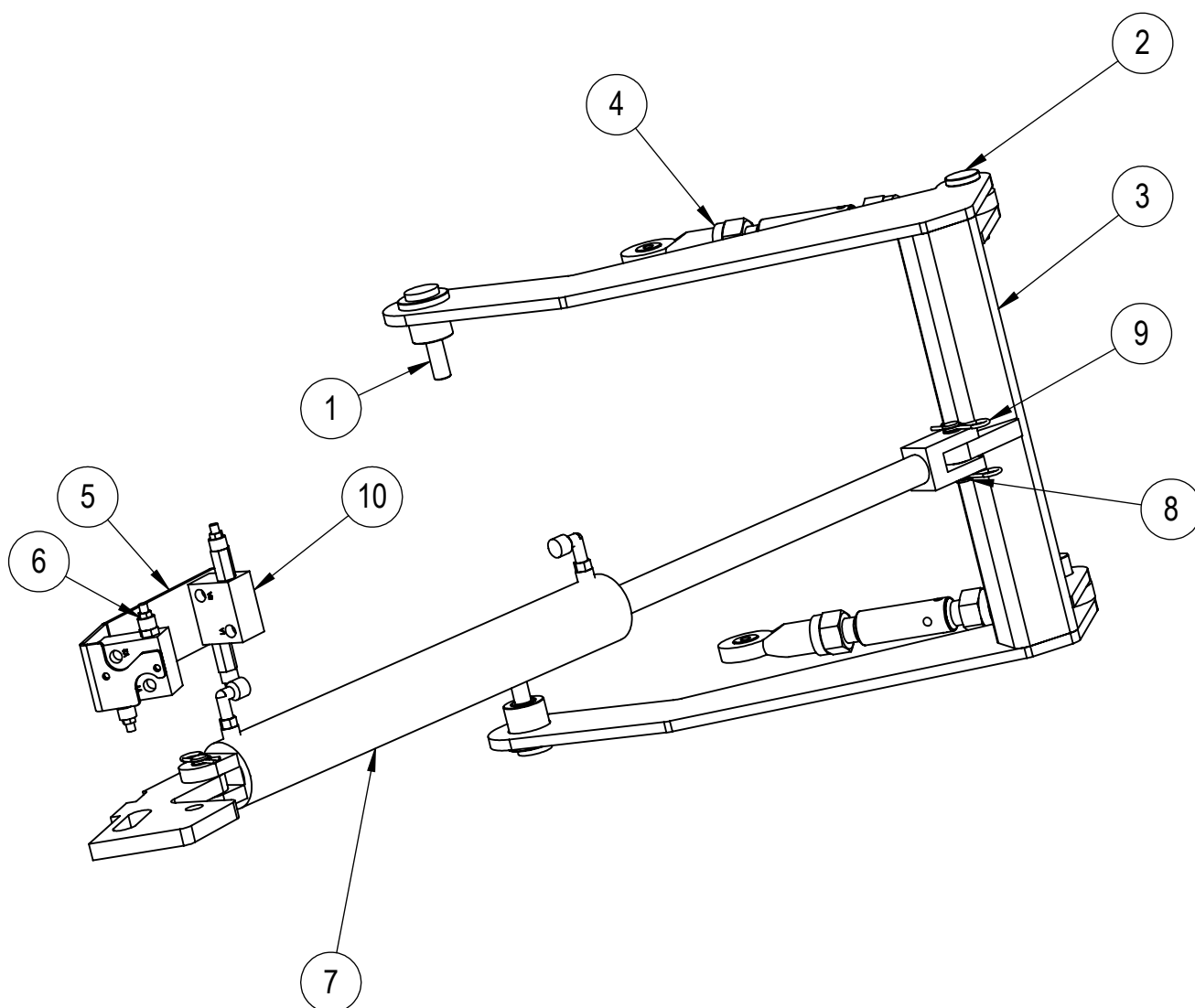
ITEM NO.	PART NUMBER	DESCRIPTION	QTY	PAGE
1	0207020-08	AUGER GUARD	1	-
2	0207218	DUAL FOLD MID AUGER BODY	1	-
3	0207219	DUAL FOLD MID AUGER	1	-
4	0207135	AUGER CENTRALISING DEVICE	1	
5	BEARING UC215-48	BEARING	1	

# DUAL FOLD UPPER AUGER



ITEM NO.	PART NUMBER	DESCRIPTION	QTY	PAGE
1	0207224	SPOUT WELDED ASSEMBLY	1	
2	2101002	UPPER AUGER CYLINDER	1	
3	0207019-08	UPPER AUGER SPRING	1	
4	UCF210	UCF210	1	
5	0220006-02	SPACER	2	
6	0207030	UPPER CYLINDER LUG	1	
7	2509002-02	4mm R CLIP	2	
8	0207212	DUAL FOLD UPPER AUGER BODY	1	
9	0207220	DUAL FOLD UPPER AUGER	1	
10	UCSBX10	PILLOW BLOCK	2	
11	0207221	AUGER STOP	1	
12	0207223	AUGER SUPPORT	1	
13	0207214-04	RUBBER STOP	1	

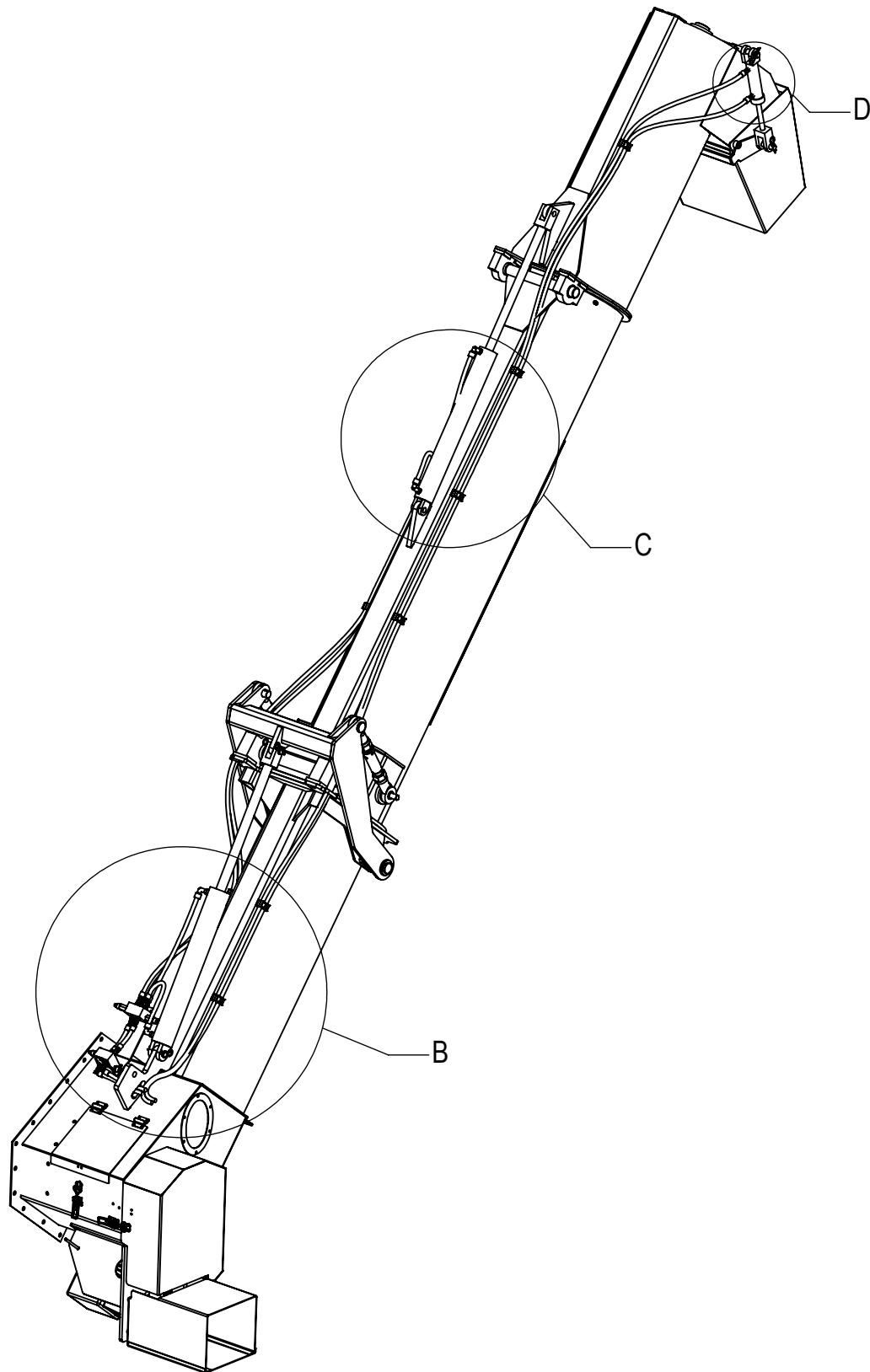
# HYDRAULIC CYLINDER ASSEMBLY



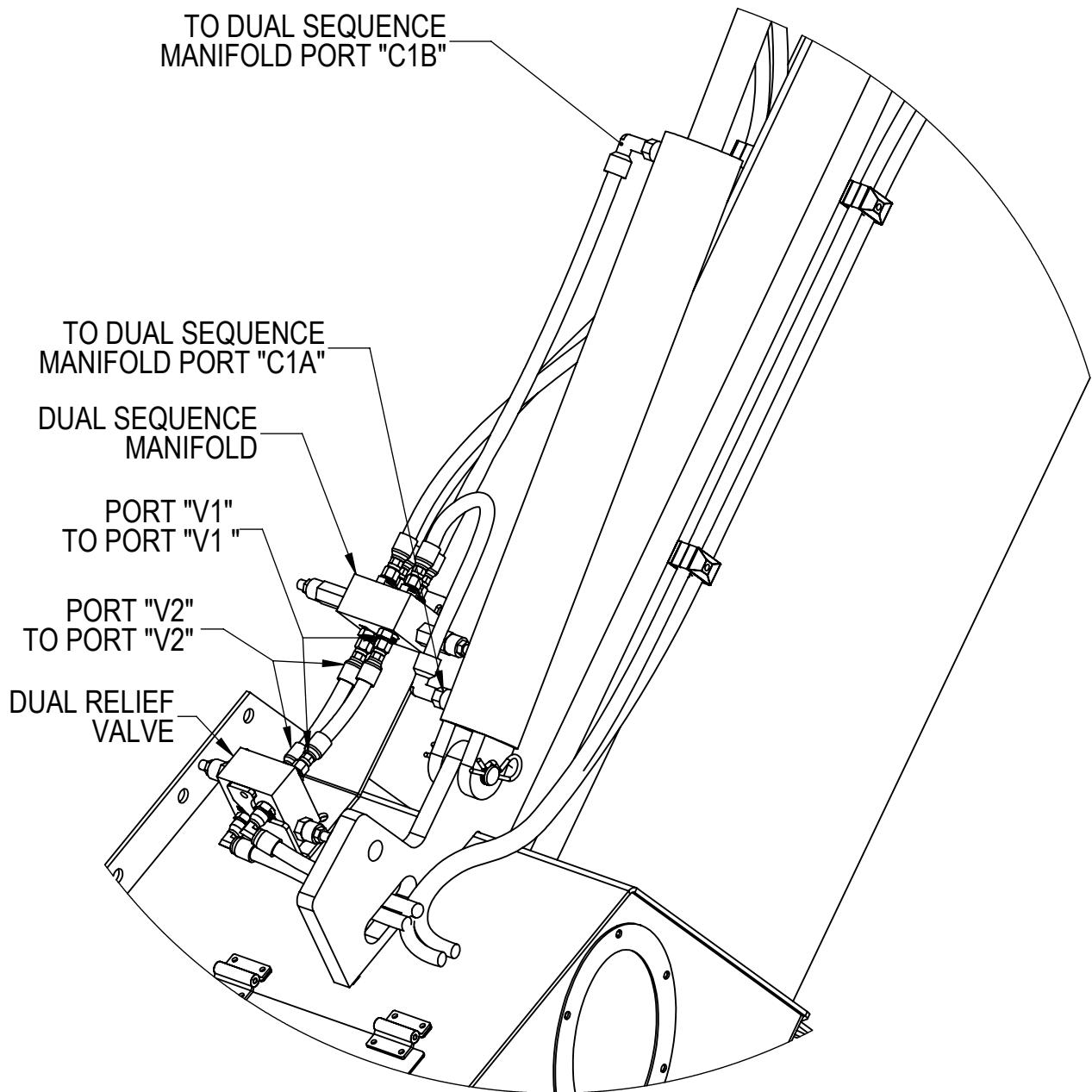
ITEM NO.	PART NUMBER	DESCRIPTION	QTY	PAGE
1	0207200-01	AUGER LEVER PIN	2	
2	0207200-02	AUGER LINKAGE PIN	2	
3	0207207	AUGER LEVER	1	
4	0207208	AUGER ADJUSTABLE LINKAGE	2	
5	0207216-01	HYDRAULIC REGULATOR MOUNTING BRACKET	1	
6	0231031-02	DUAL RELIEF VALVE	1	
7	2101003 3x24	HYDRAULIC CYLINDER 3"BORE X 24" STROKE	1	
8	2508003	PIN HYD CYL - DIA 25.4mm	2	
9	2509002-03	5mm R CLIP	4	
10	2104001	DUAL SEQUENCE MANIFOLD WITH 1/2" BSP PORTS	1	



# DAUL FOLD HYDRAULIC PIPING

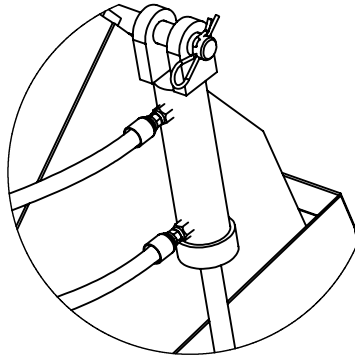


# DETAIL B



DETAIL B

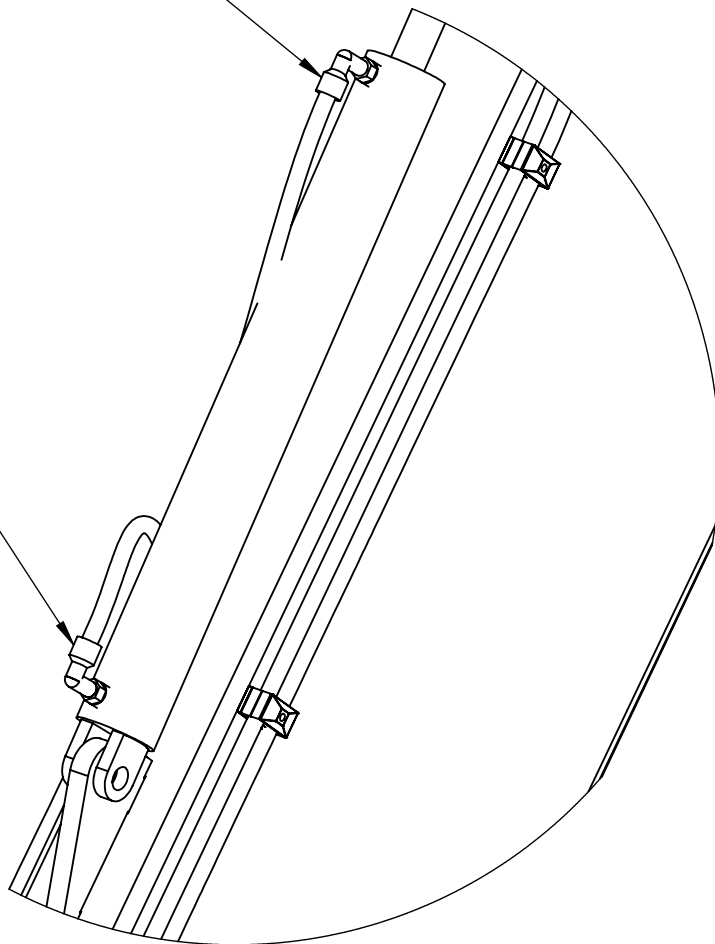
# DETAIL C AND D



DETAIL D

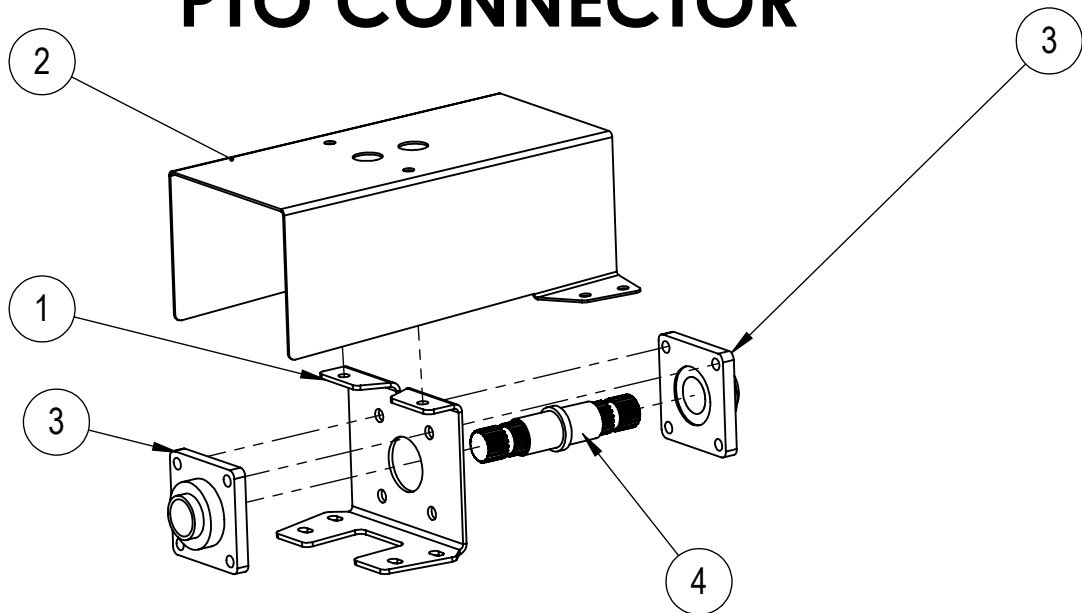
TO DUAL SEQUENCE  
MANIFOLD PORT "C2A"

TO DUAL SEQUENCE  
MANIFOLD PORT "C2B"



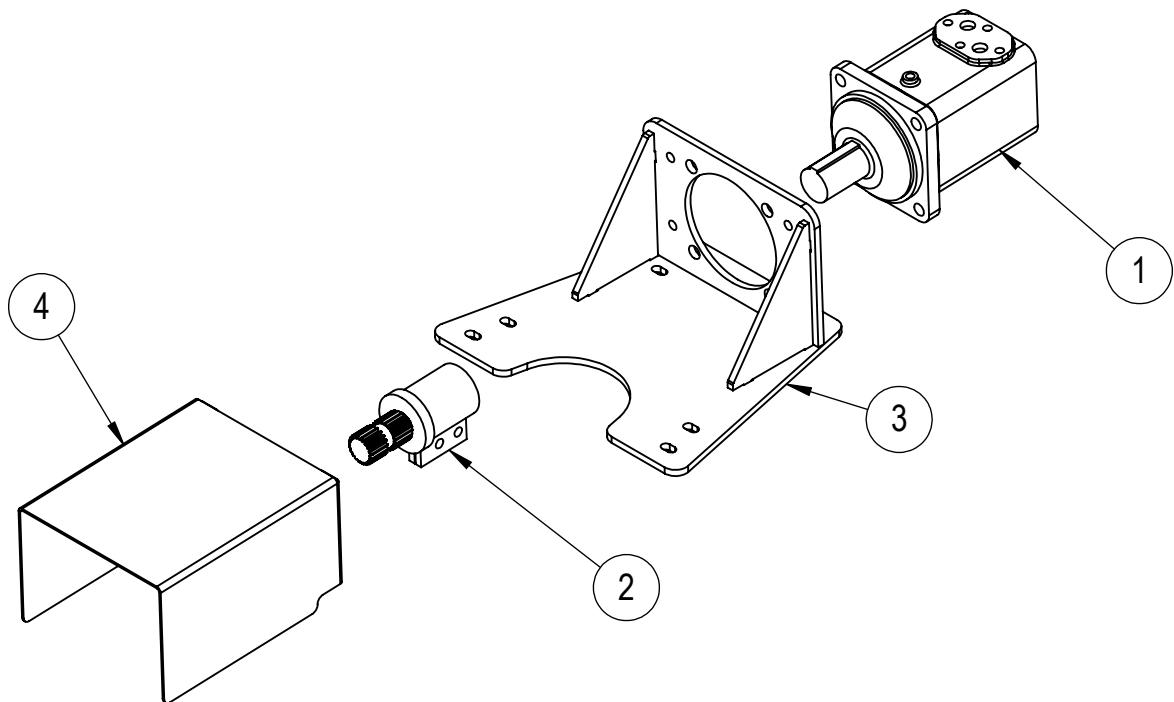
DETAIL C

# PTO CONNECTOR



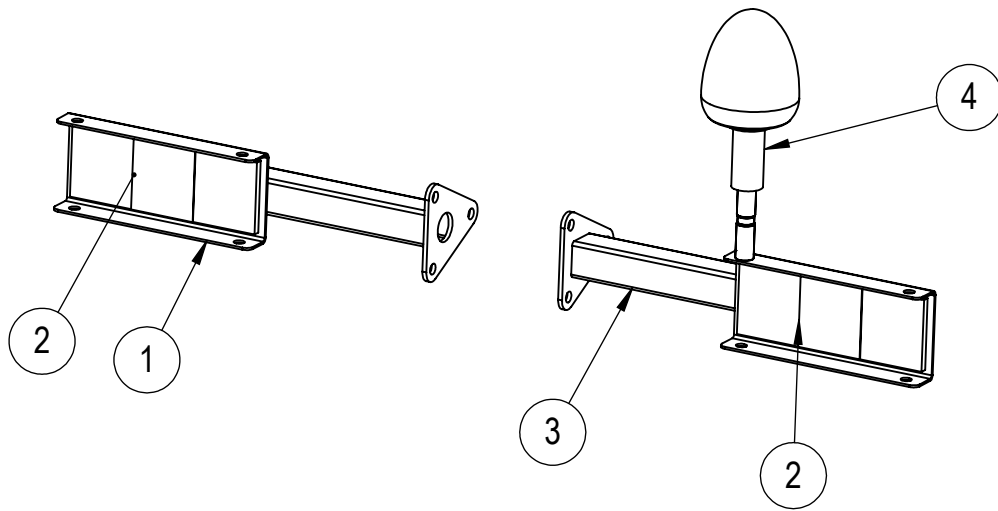
ITEM NO.	PART NUMBER	DESCRIPTION	QTY	PAGE
1	0207033-01	PTO HOUSING	1	-
2	0207033-02	PTO GUARD	1	-
3	2601002	BEARING – UCF210	2	-
4	0207033-04	PTO SPLINE SHAFT	1	-

# OPTION HYDRAULIC DRIVE



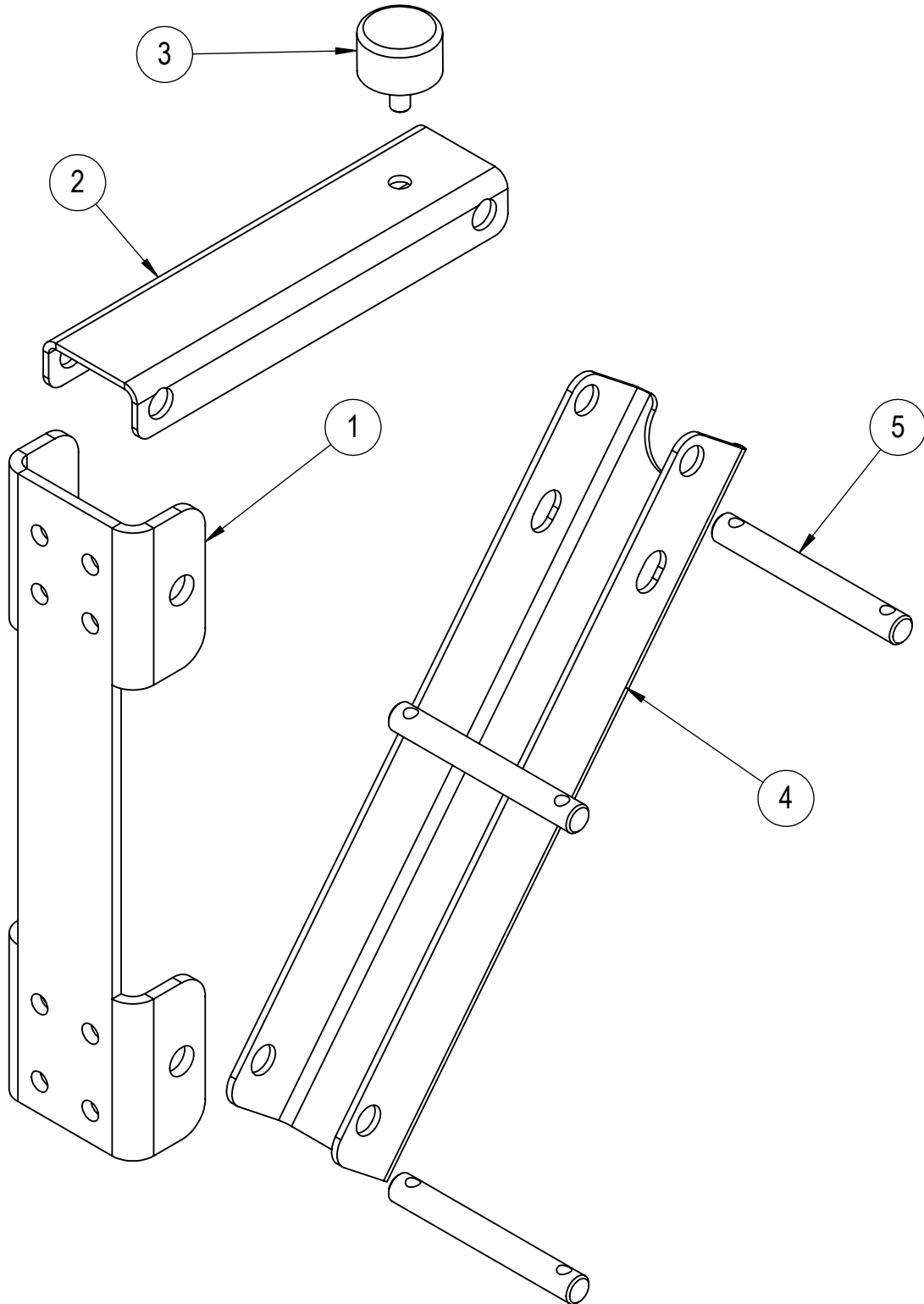
ITEM NO.	PART NUMBER	DESCRIPTION	QTY	PAGE
1	MV 400C	HYDRAULIC MOTOR MV 400C	1	
2	0207092	SPLINE ASSEMBLY	1	
3	0207093	HYDRAULIC MOTOR MOUNTING ASSEMBLY	1	
4	0207091-07	PTO PROTECTION COVER	1	

# TAIL LIGHT ASSEMBLY



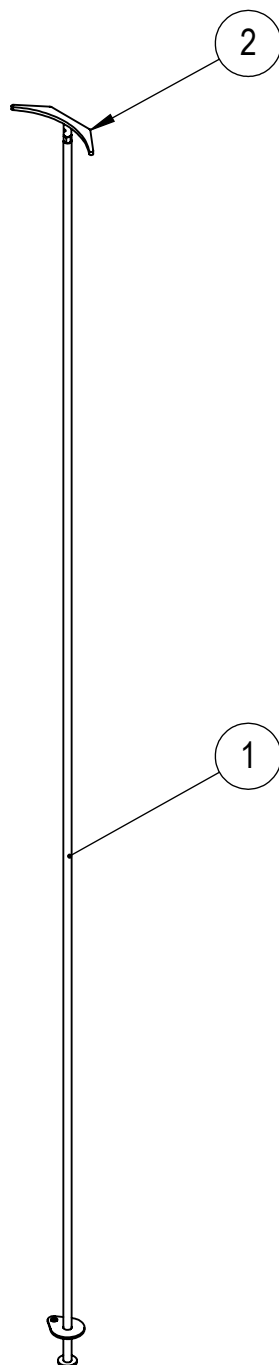
ITEM NO.	PART NUMBER	DESCRIPTION	QTY	PAGE
1	0219007	TAIL LIGHT WELDED ASSEMBLY LH	1	-
2	23-001	REFLECTORS	2	-
3	0219008	TAIL LIGHT WELDED ASSEMBLY RH	1	-
4	23-003	FLEXIBLE POLE MOUNTED BEACON	1	-

# AUGER SUPPORT



ITEM NO.	PART NUMBER	DESCRIPTION	QTY	PAGE
1	0207214-03	VERTICAL SUPPORT	1	
2	0207214-02	HORIZONTAL SUPPORT	1	
3	0207214-04	RUBBER STOP	1	
4	0207214-05	BRACE	1	
5	0207214-06	AUGER SUPPORT PIN	3	

# SCRAPER ASSEMBLY



ITEM NO.	PART NUMBER	DESCRIPTION	QTY	PAGE
1	0214022 0214021 0214023 0114024	GRAIN PUSH ROD 18 TON GRAIN PUSH ROD 25 TON GRAIN PUSH ROD 30 TON GRAIN PUSH ROD 35 TON	1	
2	0220064	GRAIN CLEAR OUT PLATE	1	