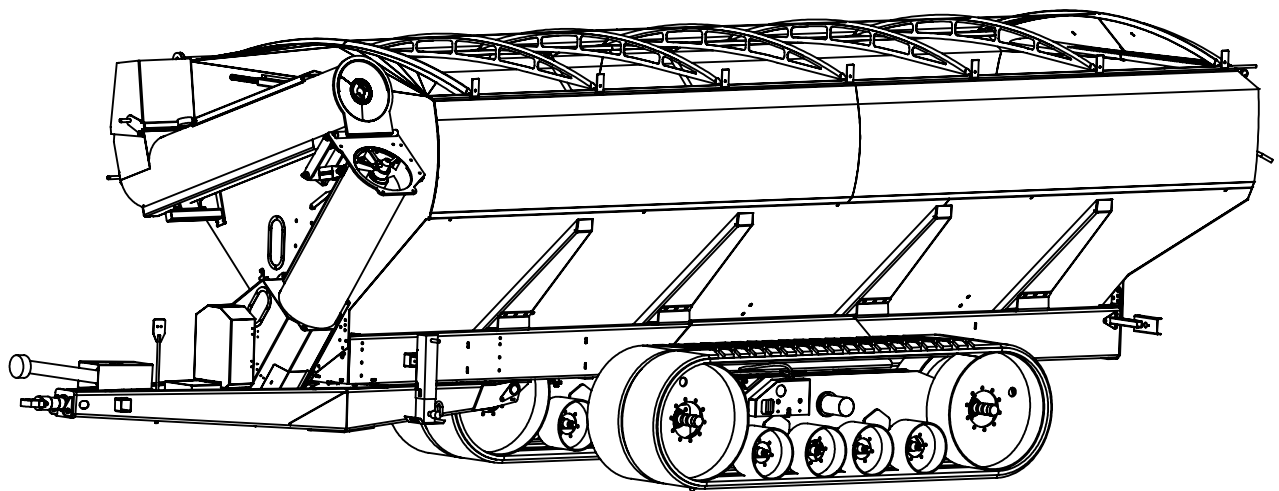
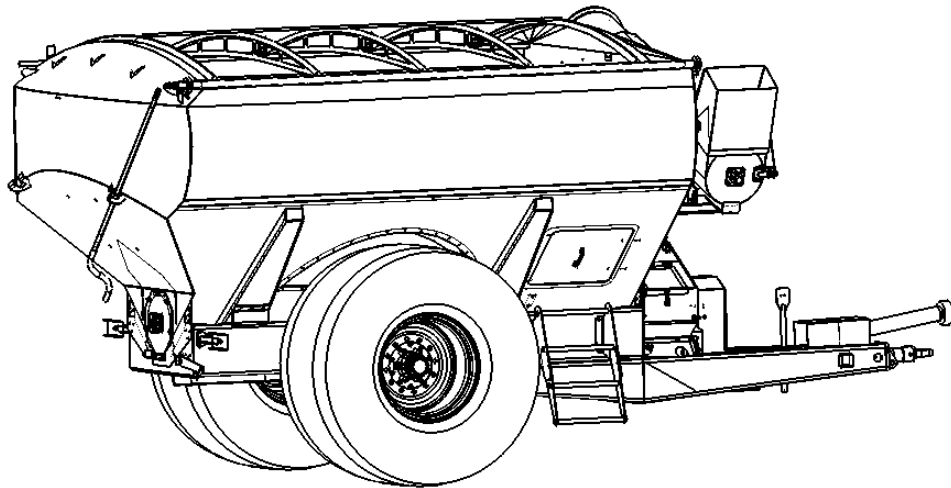


# DAVIMAC CHASER BIN PARTS LIST

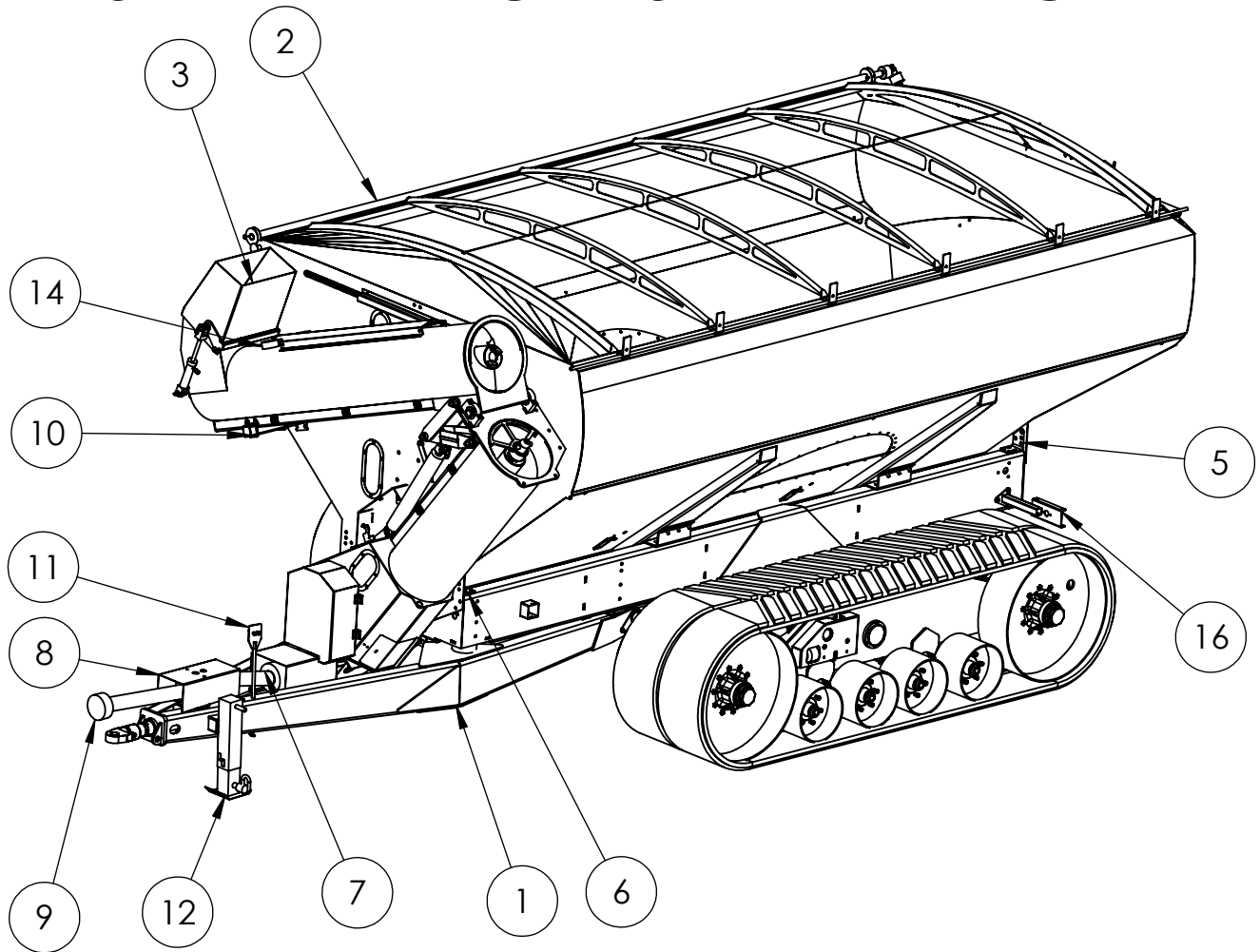


**FROM: 10115 CB TO 11915**

**DAVIMAC**  
MANUFACTURING

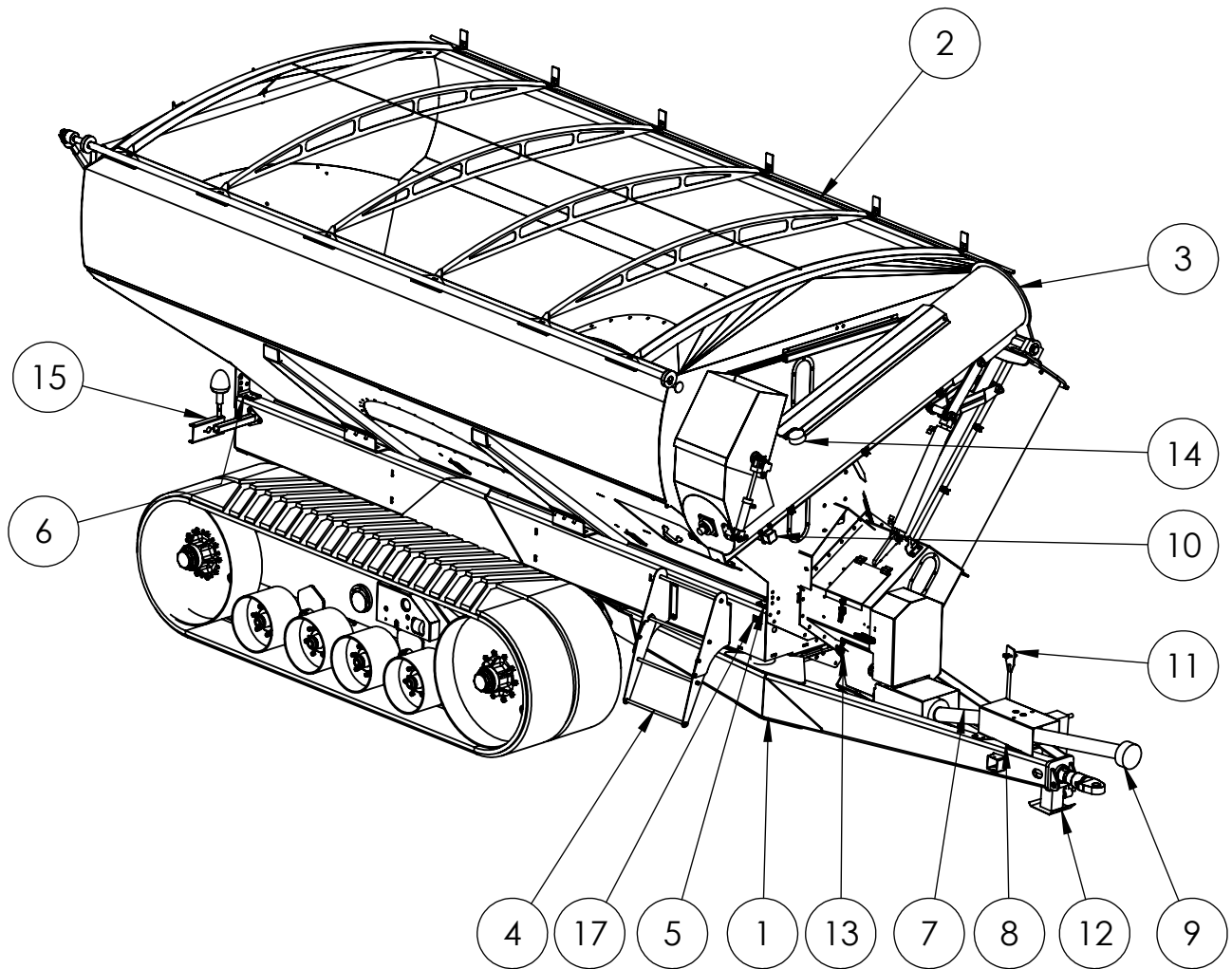
DAVIMAC PTY LTD  
55 WELINGTON STREET  
MOLONG NSW

# STANDARD CHASER BIN - RIGHT



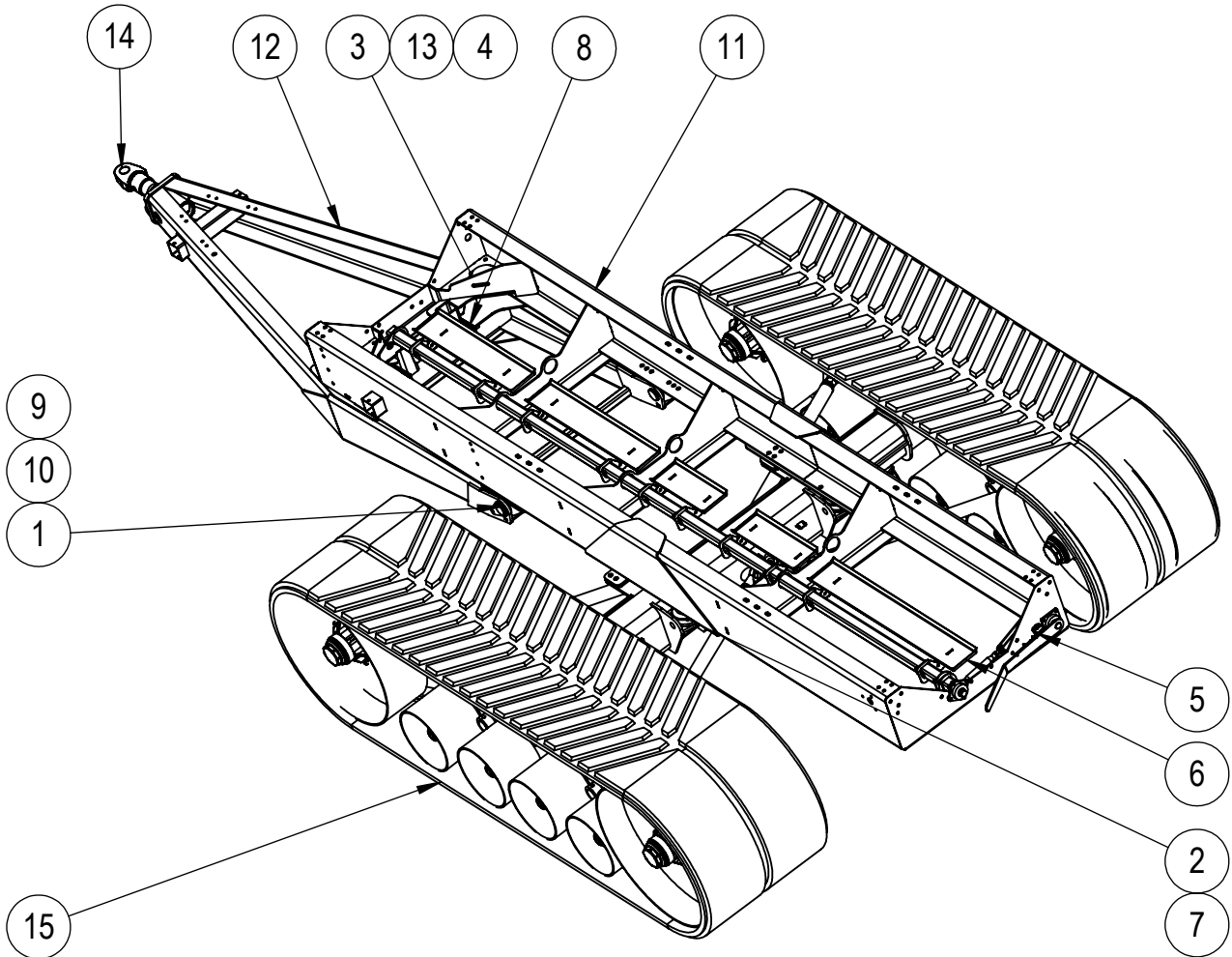
ITEM NO.	PART NUMBER	DESCRIPTION	QTY	PAGE
1	0231003	CHASSIS	1	3-8
2	0231018	BIN ASSEMBLY	1	9-10
3	0207020	AUGER ASSEMBLY	1	11-18
4	0220056	STEP BOLTED ASSEMBLY	1	-
5	0220052-01	BIN TO CHASSIS MOUNTING ANGLE TYPE 1	2	-
6	0220052-02	BIN TO CHASSIS MOUNTING ANGLE TYPE 2	2	-
7	0220022	REAR PTO SHAFT	1	-
8	0207033 0207091	PTO CONNECTOR HYDRAULIC DRIVE	1	17
9	0220031	FRONT PTO SHAFT	1	-
10	0207032	AUGER SUPPORT	1	18
11	0220055	POGO STICK BOLTED ASSEMBLY	1	-
12	0217001	JACK STAND - B9696	1	-
14	0219001	LED FLOOD WORK LIGHT	2	-
15	0219005	TAIL LIGHT ASSEMBLY RH	1	19
16	0219002	TAIL LIGHT ASSEMBLY LH	1	19

# STANDARD CHASER BIN - LEFT



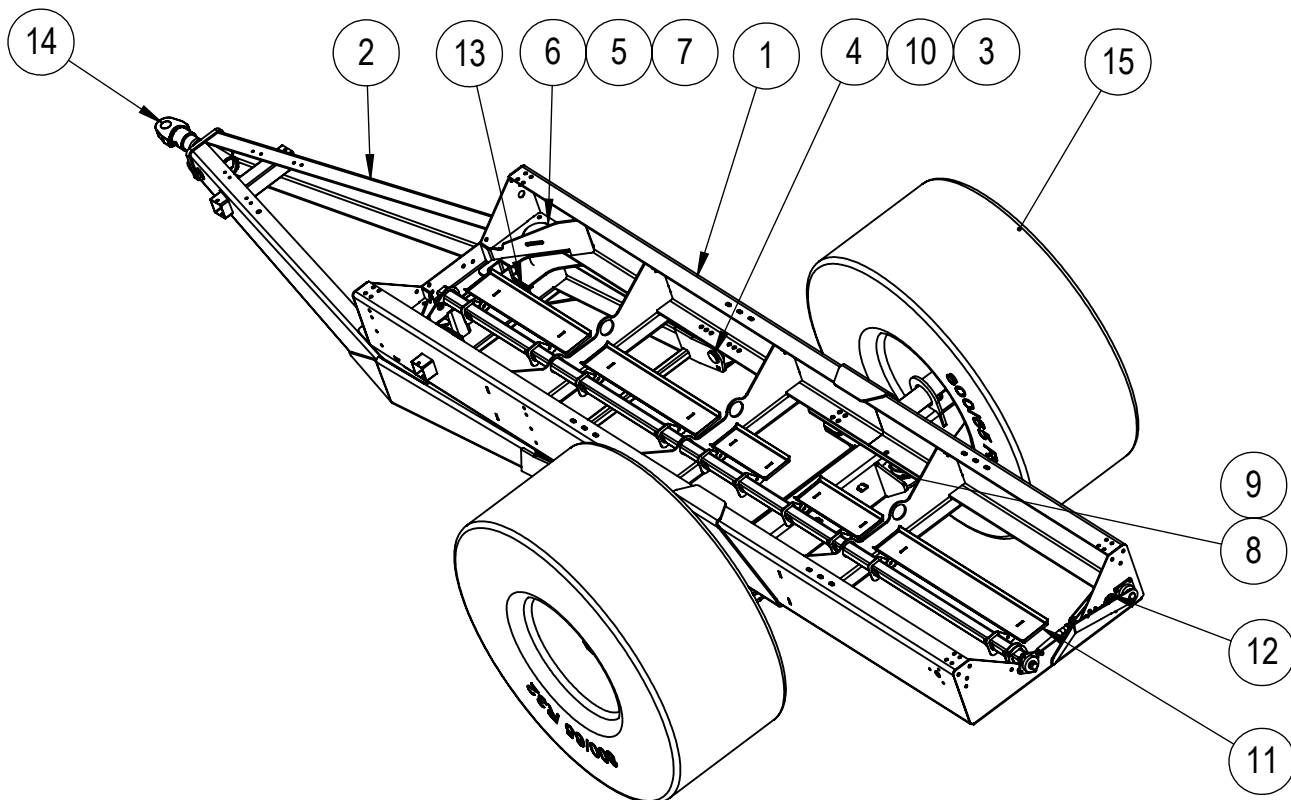
ITEM NO.	PART NUMBER	DESCRIPTION	QTY	PAGE
1	0231003	CHASSIS	1	3-8
2	0231018	BIN ASSEMBLY	1	9-10
3	0207020	AUGER ASSEMBLY	1	11-18
4	0220056	STEP BOLTED ASSEMBLY	1	-
5	0220052-01	BIN TO CHASSIS MOUNTING ANGLE TYPE 1	2	-
6	0220052-02	BIN TO CHASSIS MOUNTING ANGLE TYPE 2	2	-
7	0220022	REAR PTO SHAFT	1	-
8	0207033 0207091	PTO CONNECTOR HYDRAULIC DRIVE	1	17
9	0220031	FRONT PTO SHAFT	1	-
10	0207032	AUGER SUPPORT	1	18
11	0220055	POGO STICK BOLTED ASSEMBLY	1	-
12	0217001	JACK STAND - B9696	1	-
13	0208001	WEEL SOCKET	1	-
14	0219001	LED FLOOD WORK LIGHT	2	-
15	0219005	TAIL LIGHT ASSEMBLY RH	1	19
16	0219002	TAIL LIGHT ASSEMBLY LH	1	19
17	0220060	DAVIMAC SERIAL TAG	1	-

## CHASSIS WITH TRACKS



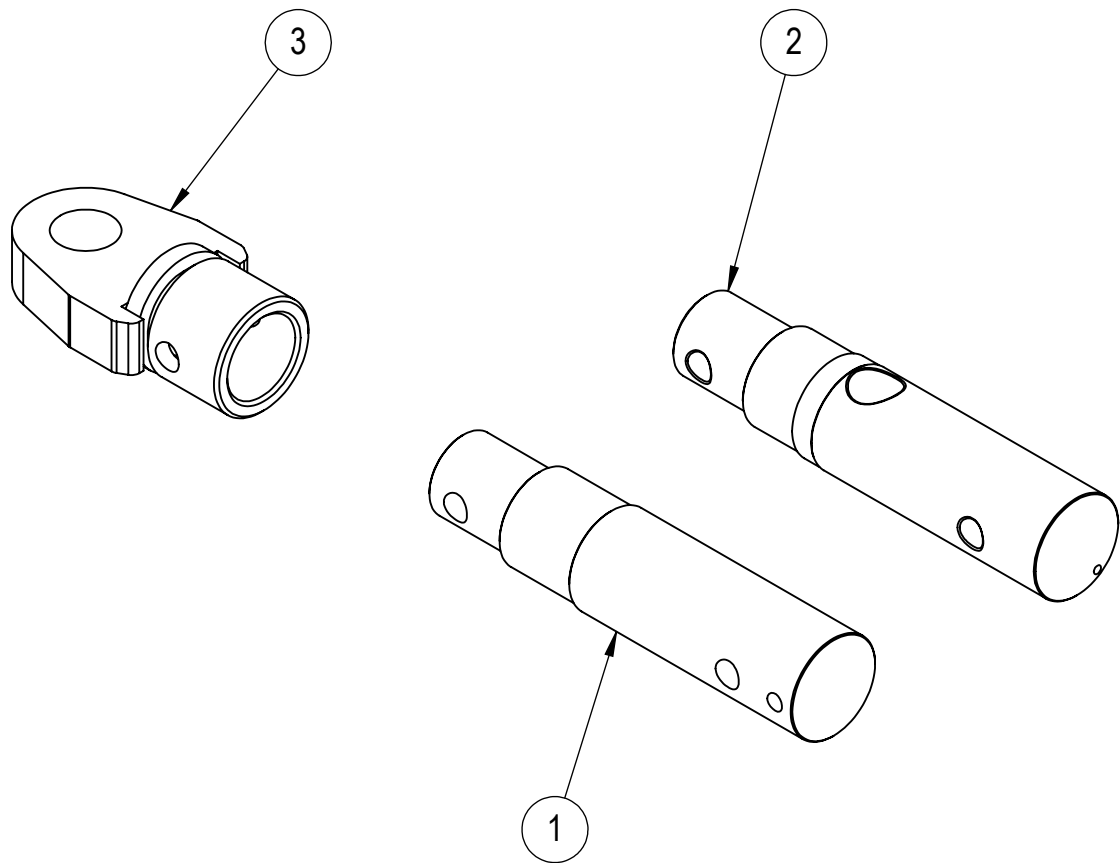
ITEM NO.	PART NUMBER	DESCRIPTION	QTY	PAGE
1	GSM-7580-40	BUSH	4	-
2	2526007	LOAD CELL MT703 T50	2	-
3	0220062-02	50mm RUBBER CUSHION	2	-
4	0220062-01	110mm RUBBER CUSHION	2	-
5	0214028-04	GRAIN DUMP DOOR CATCH	1	-
6	0214025	GRAIN DUMP DOORS	1	-
7	0204034	LOAD CELL REPLACEMENT SPACER	2	-
8	0202033-01	NYLON WEAR PLATE	2	-
9	0202024	HINGE PIN	2	-
10	0202023	HINGE BRACKET WELDED ASSEMBLY	2	-
11	0202022	CHASSIS	1	-
12	0202021	HITCH	1	-
13	0202020-01	RUBBER CUSHION PLATE	2	-
14	0202009-12	STANDARD TOW SWIVEL	1	6
15	0231004	TRACK AND AXEL ASSEMBLY	1	REFER TO TRACK SPARE PARTS

# CHASSIS WITH WHEELS



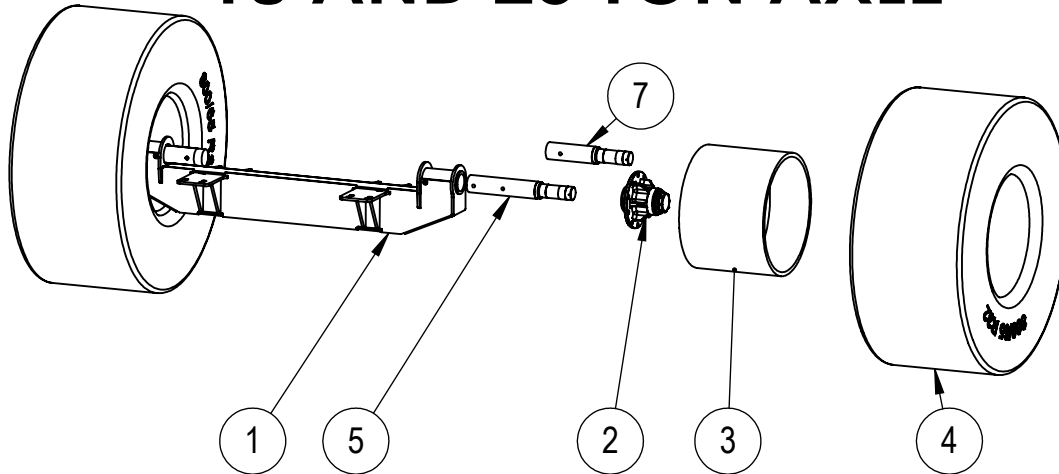
ITEM NO.	PART NUMBER	DESCRIPTION	QTY	PAGE
1	0202022	CHASSIS	1	-
2	0202021	HITCH	1	-
3	0202023	HINGE BRACKET WELDED ASSEMBLY	2	-
4	0202024	HINGE PIN	2	-
5	0220062-01	110mm RUBBER CUSHION	2	-
6	0220062-02	50mm RUBBER CUSHION	2	-
7	0202020-01	RUBBER CUSHION PLATE	2	-
8	2526007	LOAD CELL MT703 T50	2	-
9	0204034	LOAD CELL REPLACEMENT SPACER	2	-
10	GSM-7580-40	BUSH	4	-
11	0214025	GRAIN DUMP DOORS	1	-
12	0214028-04	GRAIN DUMP DOOR CATCH	1	-
13	0202033-01	NYLON WEAR PLATE	2	-
14	0202009-12	STANDARD TOW SWIVEL	1	5
15	0231006	WHEEL AND AXEL ASSEMBLY	1	6-8

# TOW SWIVEL



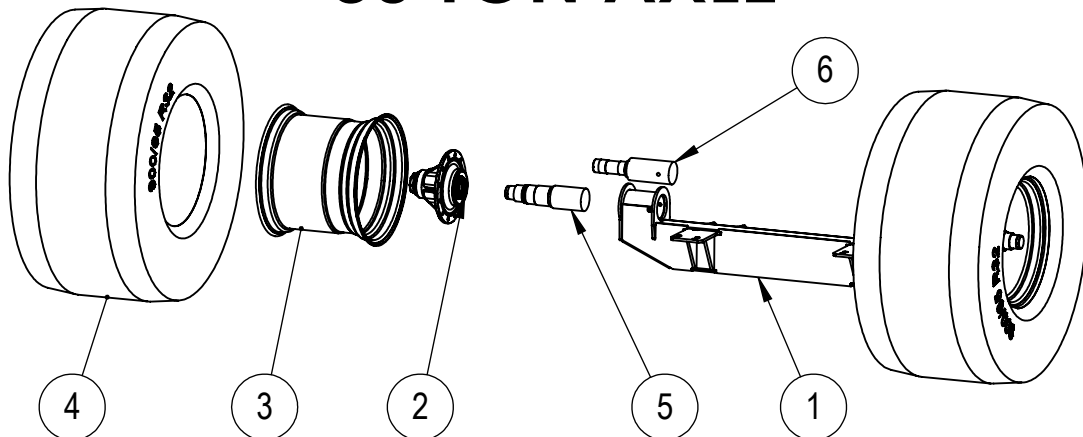
ITEM NO.	PART NUMBER	DESCRIPTION	QTY	PAGE
1	0202009-01	TOW SHANK	1	
2	0202009-10	LOAD CELL	1	
3	0231040	TOW EYES	1	

# 18 AND 25 TON AXLE



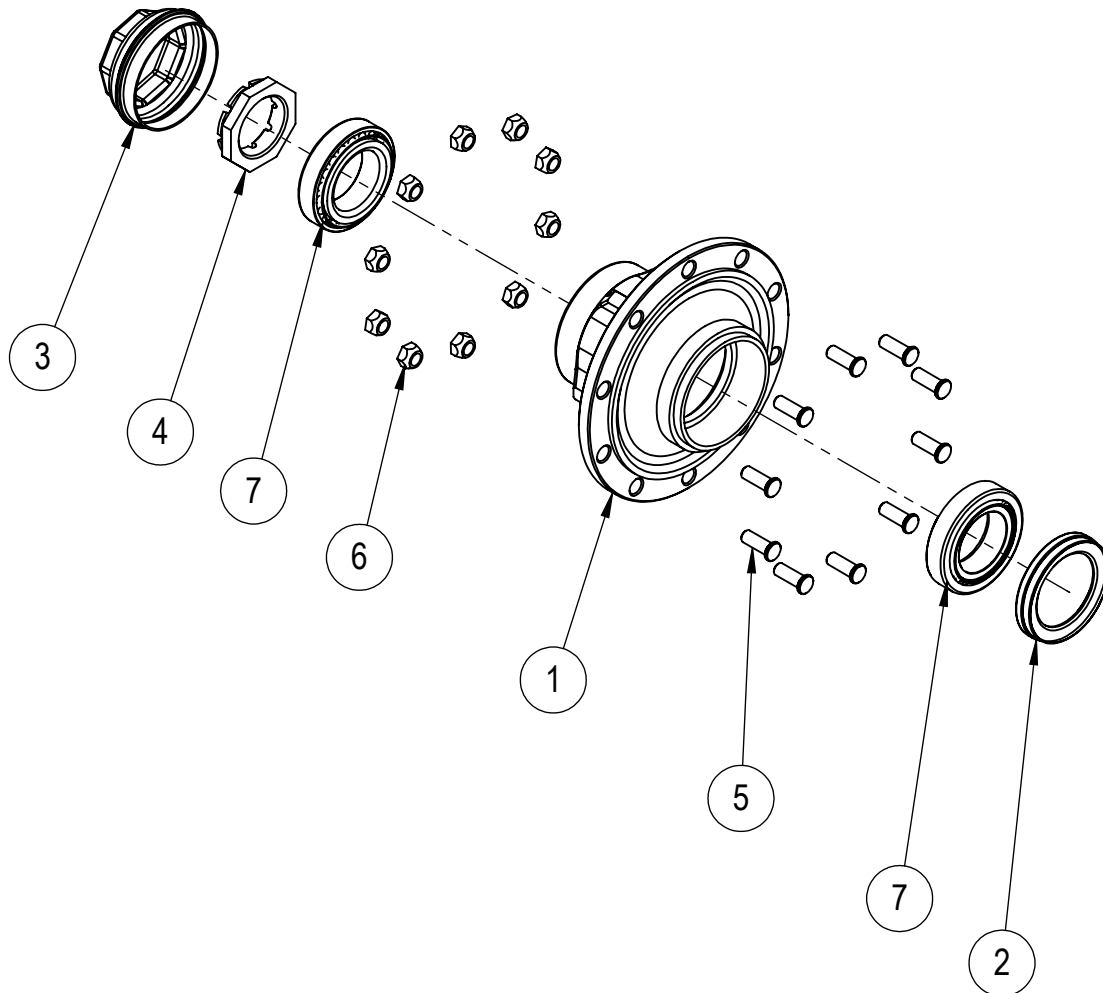
ITEM NO.	PART NUMBER	DESCRIPTION	20 TON QTY	18TON QTY	PAGE
1	0204033	18 AND 25 TON AXLE	1	1	
2	0231007	10 STUD HUB	2	2	7
3	2201002-32R	RIM	2	2	
4	2202009	800mm TYRE	2	-	
5	2203020-01	18 AND 25 TON STUB AXLE 3m	2	2	
6	2202006	30.5 TYRE	-	2	
7	2203020-01	18 AND 25 TON STUB AXLE STANDARD	2	2	

# 30 TON AXLE



ITEM NO.	PART NUMBER	DESCRIPTION	QTY	PAGE
1	0204036	30 TON AXLE FOR WHEELS	1	-
2	0231009	12 STUD HUB	2	8
3	2201007_32R	RIM	2	-
4	2202004	900mm TYRE	2	-
5	2203008-01	30 TON STUB AXLE 3m	2	-
6	0231008-01	30 TON STUB AXLE STANDARD	2	

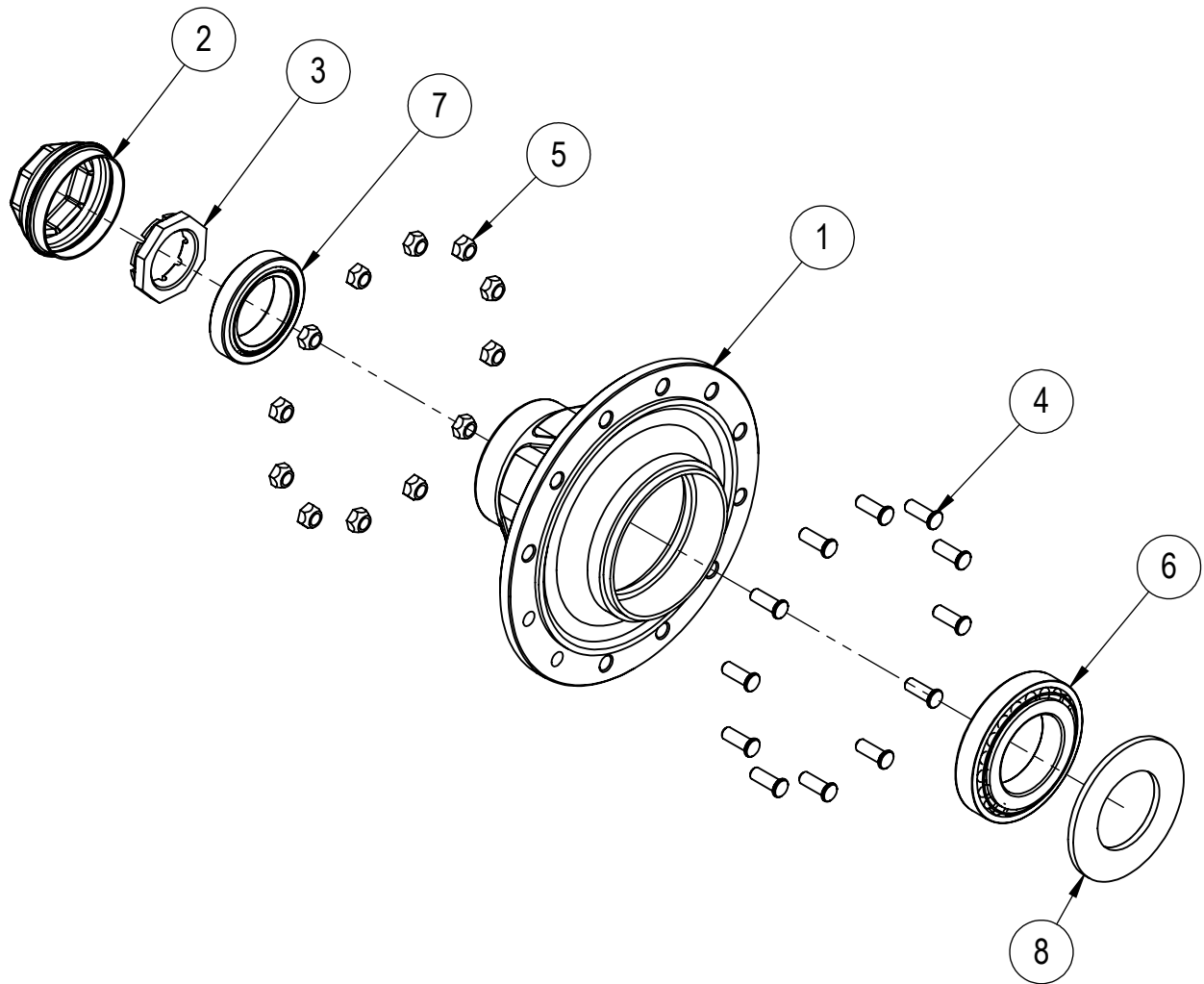
# 10 STUD HUB



ITEM NO.	PART NUMBER	DESCRIPTION	QTY	PAGE
1	2203006-03	10 STUD HUB	1	
2	2203006-06	SEAL	1	
3	2203006-08	HUB CAP	1	
4	2203006-07	CROW NUT	1	
5	2203006-04	STUD	10	
6	2203006-05	WHEEL NUT	10	
7	2203006-09	BEARING	2	

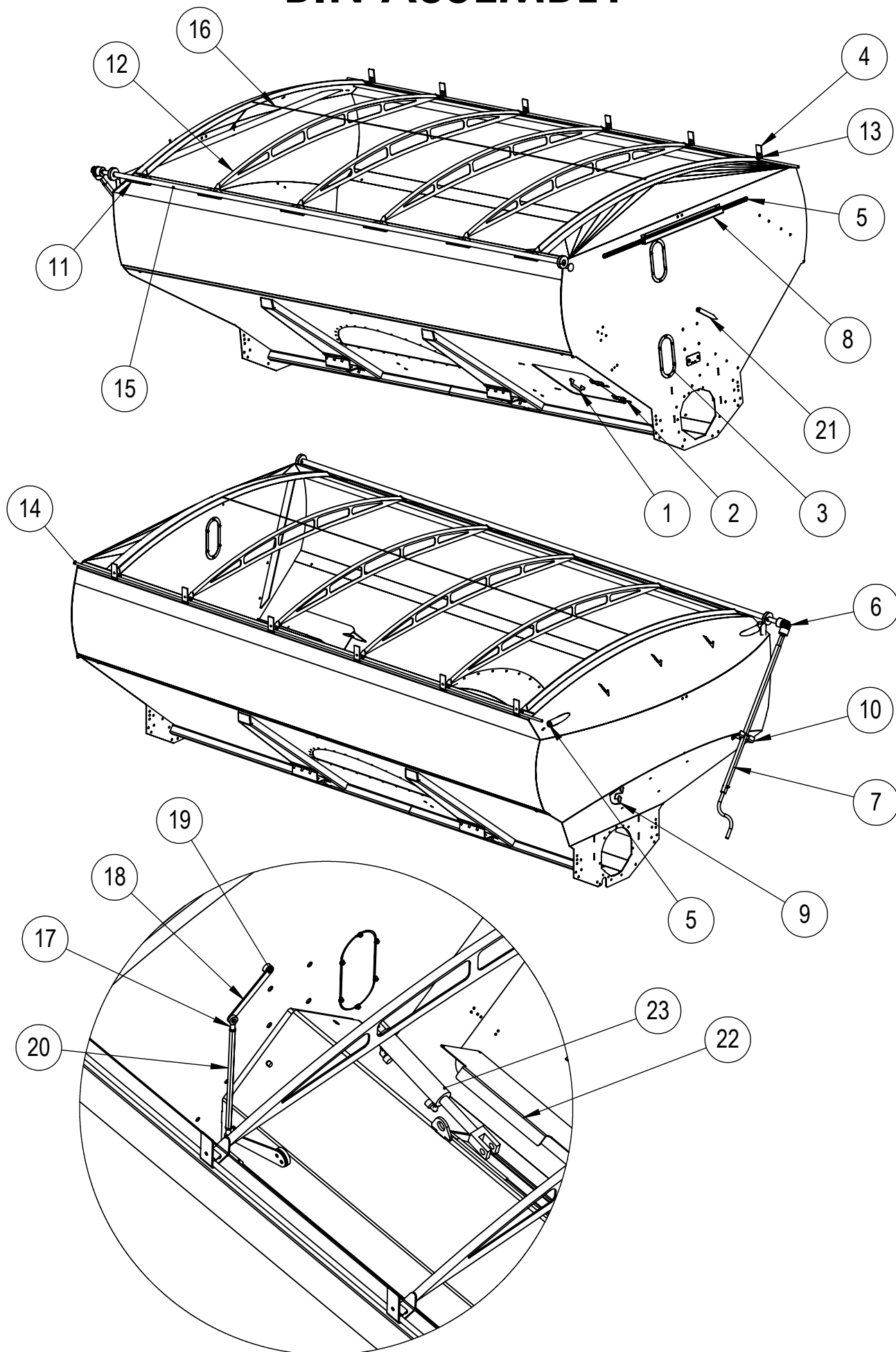


# 12 STUD HUB



ITEM NO.	PART NUMBER	DESCRIPTION	QTY	PAGE
1	2203007-02	HUB	1	
2	2203027-01	HUB CAP	1	
3	2203027-02	CROWN NUT	1	
4	2203006-04	STUD	12	
5	2203006-05	WHEEL NUT	12	
6	2203018	BEARING	1	
7	2203019	BEARING	1	
8	2203021	SEAL	1	

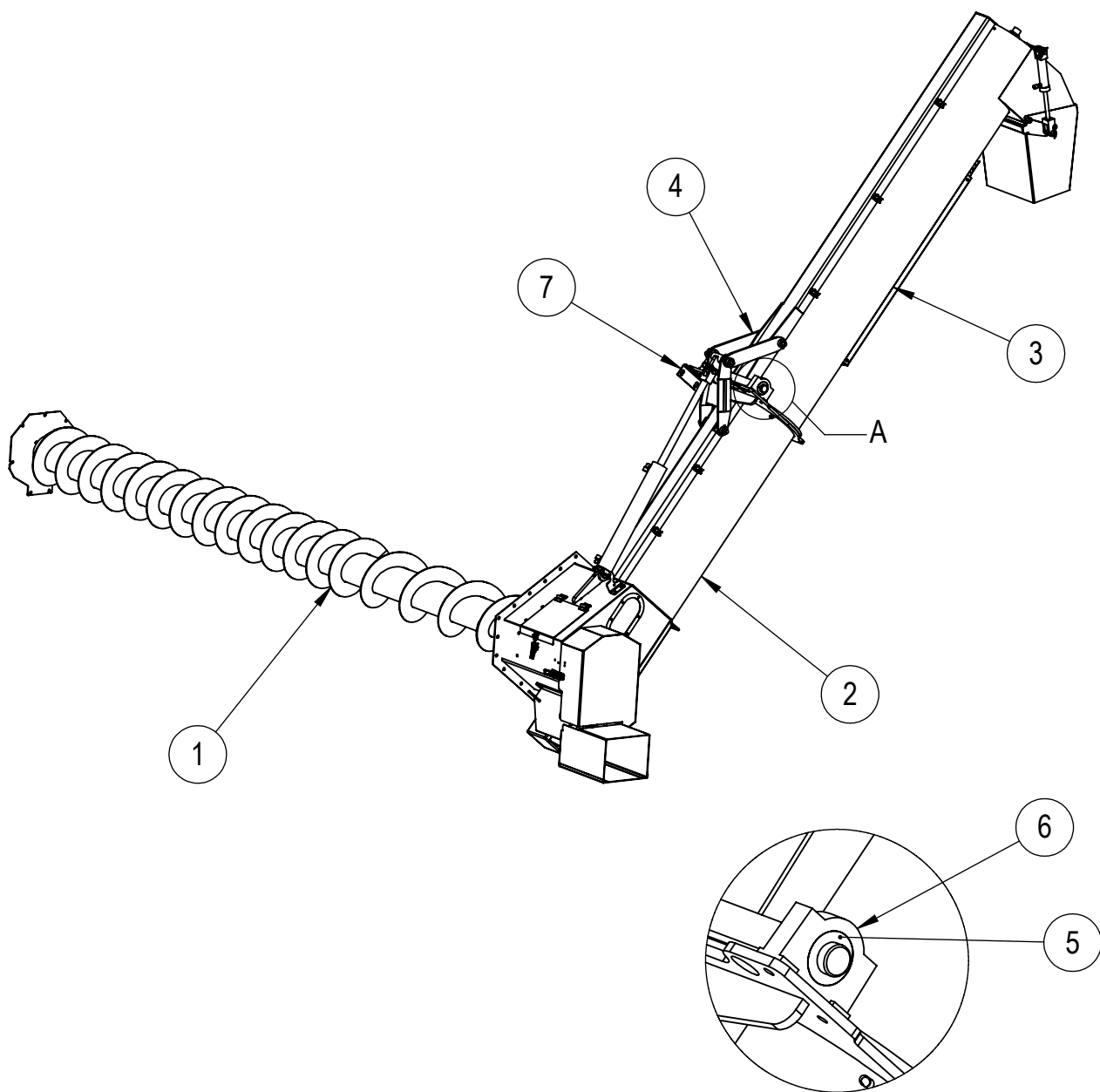
# BIN ASSEMBLY



# BIN ASSEMBLY PARTS LIST

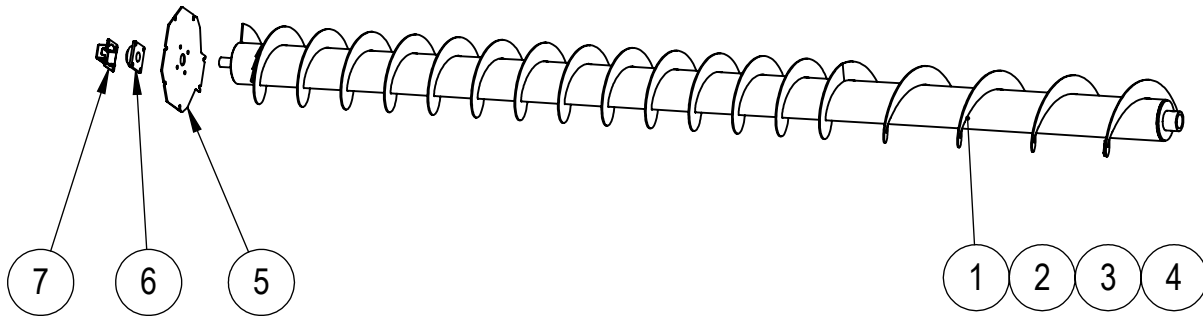
ITEM NO.	PART NUMBER	DESCRIPTION	QTY	PAGE
1	0214028	ACCESS DOOR WELDED ASSEMBLY	1	-
2	2510002	UTE LATCHES	2	-
3	0205067	WINDOW AND FRAME ASSEMBLY	2	-
4	0215002-01	TARP CATCHER	2	-
5	0220024	TARP SPRING	2	-
6	2513001	TARP UNIVERSAL JOINT	1	-
7	0215006	TARP ROLLER HANDLE	1	-
8	0215009-01	SPRING COVER	1	-
9	0215013-02	TARP ROLLER HANDLE HOLDER LH	1	-
10	0215013-01	TARP ROLLER HANDLE HOLDER RH	1	-
11	0215002-04	PLATE	2	-
12	0215001	TARP SUPPORT BRACE	4	-
13	0215002-03	TARP CLAMP	6	-
14	0215002-02	TARP RETAINING ROD	1	-
15	0215003	TARP ROLL	1	-
16	0205060-25	4mm WIRE ROPE ASSEMBLY	1	-
17	2603001	METRIC FEMALE NARROW RODEND M12 (SI12C)	2	-
18	0218001-02	POINTER LINK PLATE	1	-
19	0218002-01	SPACER	1	-
20	0214082-01	HEX BAR	1	-
21	0218001-01	POINTER	1	-
22	0214080-03	INSPECTION DOOR	1	-
23	0231021	GRAIN FLOW DOOR HYDRAULIC RAM	1	-

# AUGER ASSEMBLY



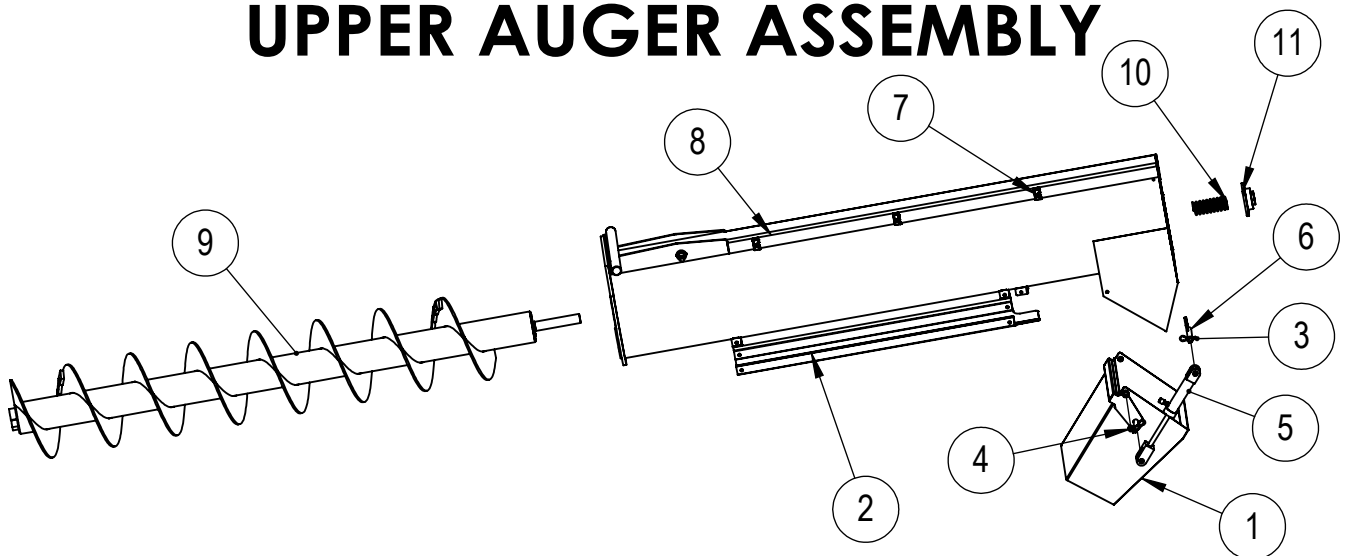
ITEM NO.	PART NUMBER	DESCRIPTION	QTY	PAGE
1	0231011	CROSS AUGER	1	
2	0231012	LOWER AUGER AND ATTACHMENTS	1	
3	0231013	UPPER AUGER ASSEMBLY	1	
4	0231014	HYDRAULIC CYLINDER ASSEMBLY	1	
5	UCX10 50mm	BEARING	2	-
6	SB211	HOUSING	2	-
7	0207021-09	MOUNTING PLATE	1	-

# CROSS AUGER



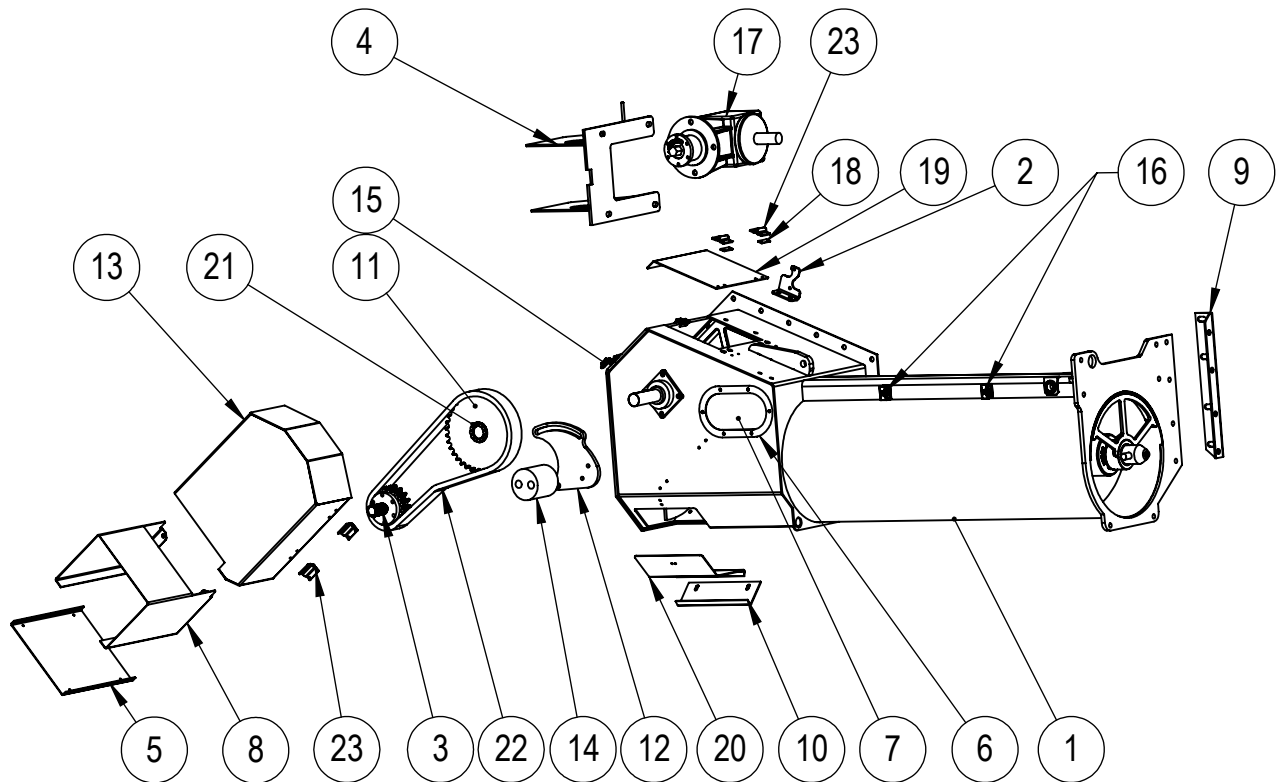
ITEM NO.	PART NUMBER	DESCRIPTION	QTY	PAGE
1	0207086	35 TON CROSS AUGER ASSEMBLY	1	-
2	0207081	30TON CROSS AUGER ASSEMBLY	1	-
3	0207023	25 TON CROSS AUGER ASSEMBLY	1	-
4	0207079	18 TON CROSS AUGER ASSEMBLY	1	-
5	0207020-03	AUGER END PLATE	1	-
6	UCF210	UCF210	1	-
7	0207020-05	SHAFT PROTECTION COVER	1	-

# UPPER AUGER ASSEMBLY



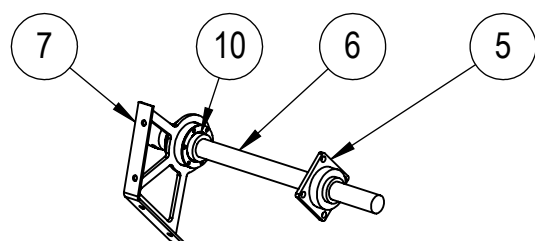
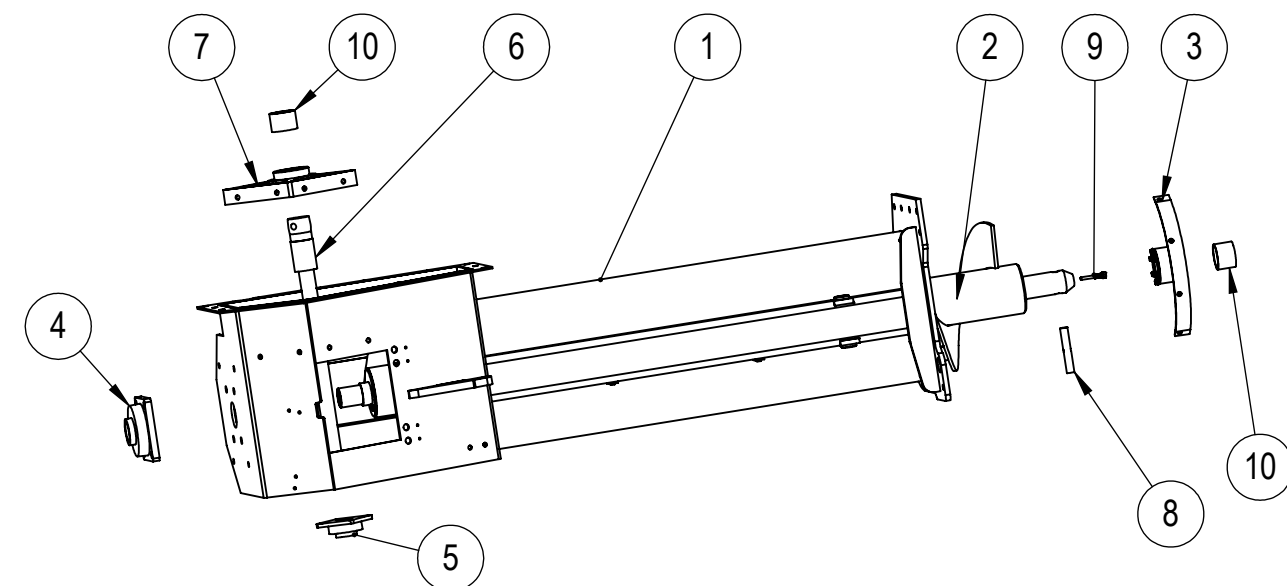
ITEM NO.	PART NUMBER	DESCRIPTION	QTY	PAGE
1	0207076	SPOUT WELDED ASSEMBLY	1	-
2	0207020-08	AUGER GUARD	1	-
3	2509002-02	4mm R CLIP	2	-
4	0220006-02	SPACER	2	-
5	2101002	HYDRAULIC CYLINDER B3085	1	-
6	0207030	UPPER CYLINDER LUG	1	-
7	RCD-15	PIPE CLAMP	3	-
8	0207022	UPPER AUGER BODY	1	-
9	0207027	UPPER AUGER	1	-
10	0207019-08	UPPER AUGER SPRING	1	-
11	UCF210	FLANGE BEARING UCF210	1	-

# LOWER AUGER AND ATTACHMENTS

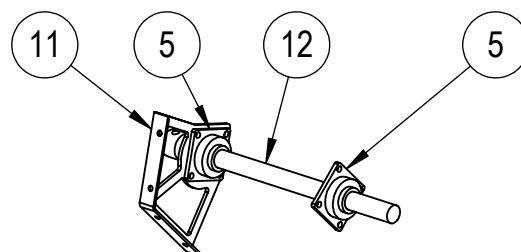


ITEM NO.	PART NUMBER	DESCRIPTION	QTY	PAGE
1	0231016	LOWER AUGER ASSEMBLY	1	
2	0207020-02	HYDRAULIC REGULATOR MOUNTING BRACKET	1	-
3	0207024	DRIVE SPROCKET ASSEMBLY	1	-
4	0207025	GEARBOX MOUNTING WELDED ASSEMBLY	1	-
5	0207020-04	CHAIN PROTECTION COVER LID	1	-
6	0207020-06	WINDOW HOLDING RING	2	-
7	0207078	WINDOW PERSPEX 6MM THICK (AUGER)	1	-
8	0207020-07	CHAIN PROTECTION COVER	1	-
9	0207021-09	MOUNTING PLATE	1	-
10	0207021-13	DOOR MOUNTING PLATE	1	-
11	0207087	SPROCKET MACHINING	1	-
12	0207034-02		1	-
13	0207035	UPPER CHAIN COVER	1	-
14	0207034-01		1	-
15	2510001	LARGE LATCH SH 28	2	-
16	RCD-15	PIPE CLAMP	2	-
17	0207077	GEARBOX	1	-
18	0207020-10	HINGE SPACER	2	-
19	0207021-07	INSPECTION HATCH	1	-
20	0207084	INSPECTION DOOR ASSEMBLY	1	-
21	Z6-50X80	Z6 SERIES LOCKING ASSEMBLY	1	-
22	0231012-01	CHAIN 1" PITCH 2 ROWS	1	-
23	2501001	HINGE – BUTT	4	

# LOWER AUGER ASSEMBLY



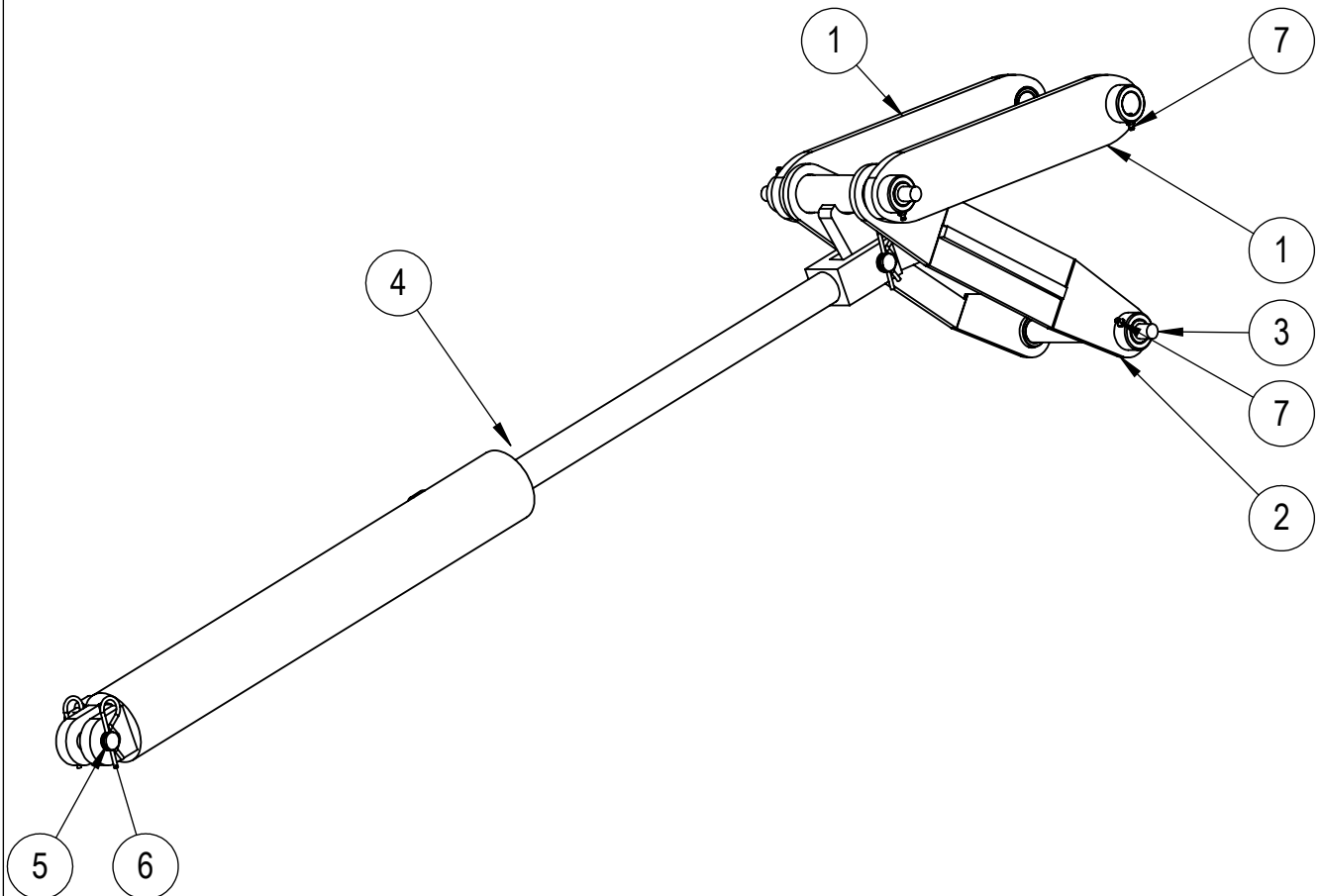
CHASER BINS WITH SERIAL NUMBER  
CB10115  
CB10215  
CB10415  
CB10515  
CB10715  
CB10815  
FITTED WITH THIS CENTRALISING  
CONFIRMATION



CHASER BINS WITH SERIAL NUMBER  
CB10315  
CB10615  
CB10915 AND LATER  
FITTED WITH THIS CENTRALISING  
CONFIRMATION

ITEM NO.	PART NUMBER	DESCRIPTION	QTY FOR CB10115, CB10215, CB10415, CB10515, CB10715, CB 10815	QTY FOR CB10315, CB10615,CB10915 AND LATER
1	0207021	LOWER AUGER BODY	1	1
2	0207026	LOWER AUGER	1	1
3	0207028	AUGER CENTRALISING DEVICE	1	1
4	2601009	FLANGE BEARING UCF 313	1	1
5	UCF210	FLANGE BEARING UCF 210	1	2
6	0207037	AUGER DRIVE SHAFT WELDED ASSEMBLY	1	-
7	0207036	LOWER CENTRALISING DEVICE	1	-
8	0207026-06	SHEAR PIN	1	1
9	0207090	LOCATING PIN	1	1
10	0207028-03	CRNTRALISING BUSH	2	1
11	0207094	LOWER CENTRALISING DEVICE	-	1
12	0207095	AUGER DRIVE SHAFT WELDED ASSEMBLY	-	1

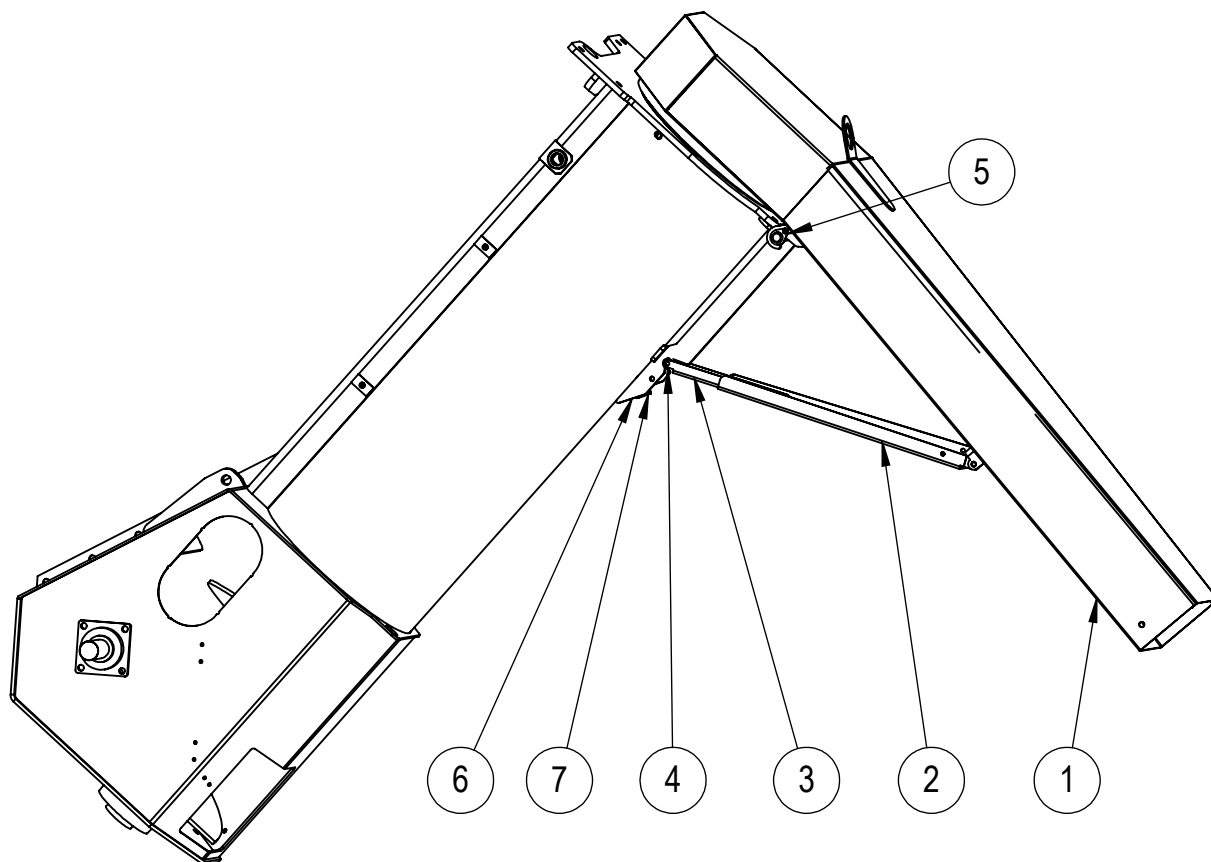
# HYDRAULIC CYLINDER ASSEMBLY



ITEM NO.	PART NUMBER	DESCRIPTION	QTY	PAGE
1	0207031	UPPER LINKAGE	2	-
2	0207029	LOWER LINKAGE	1	-
3	0207075-06	HINGE SHAFT	1	-
4	2101003 3x24	HYDRAULIC CYLINDER 3"BORE X 24" STROKE	1	-
5	2508003	PIN HYD CYL - DIA 25.4mm	2	-
6	2509002-03	5mm R CLIP	4	-
7	2525001	GREASE NIPPLE CGN29 1/8 BSP STRAIGHT	6	-

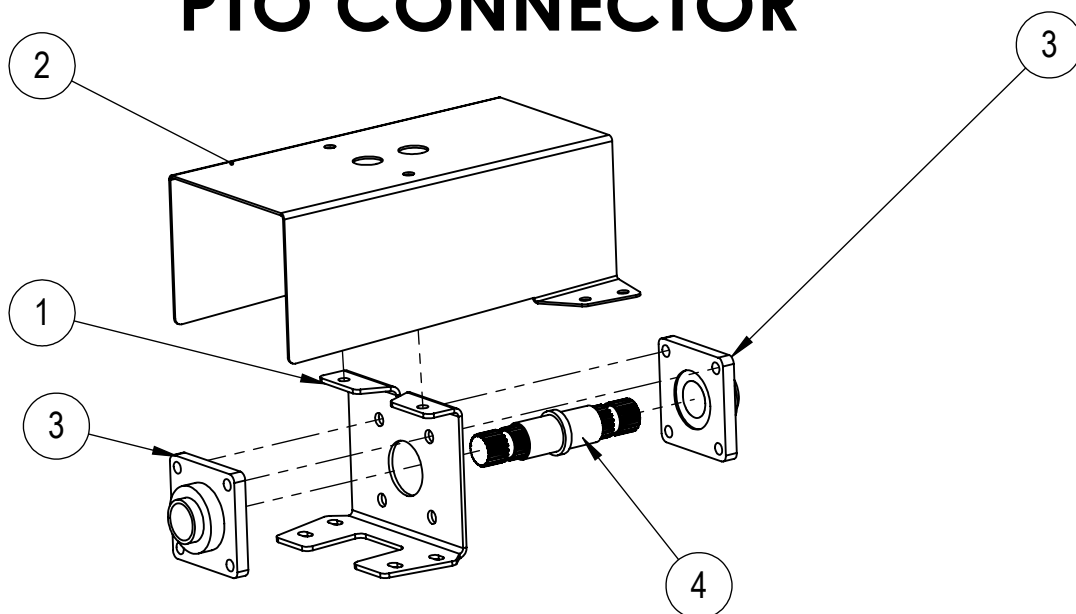


# OPTIONAL AUGER ATTACHMENTS



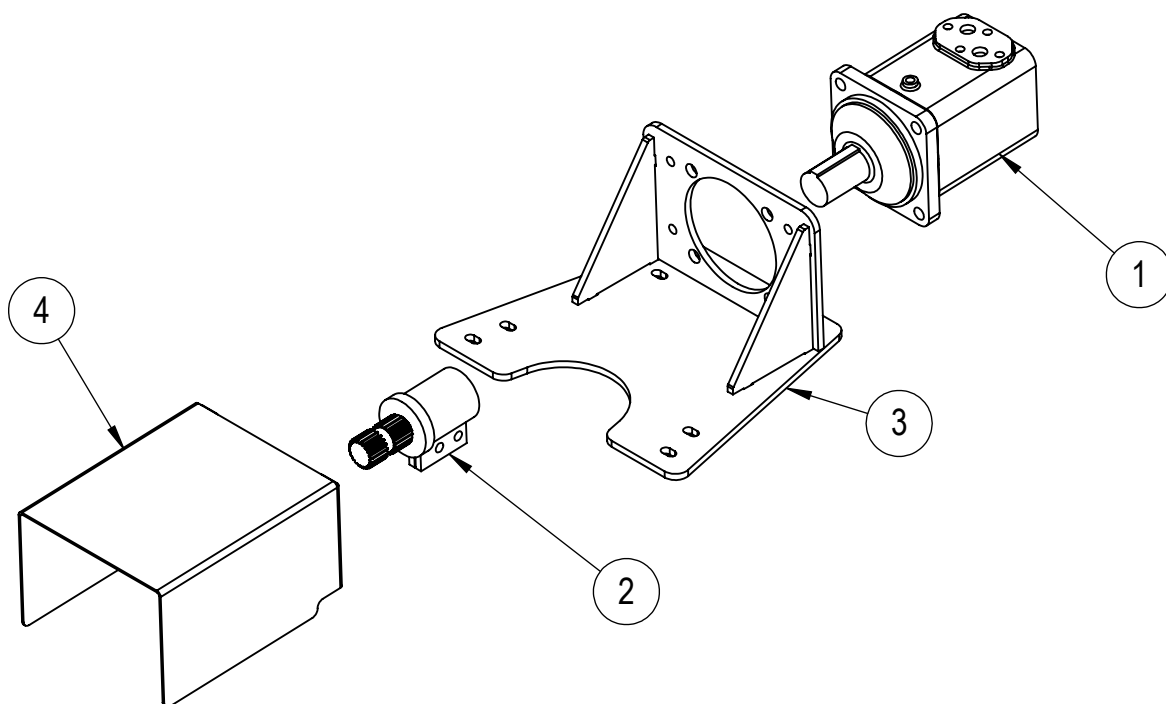
ITEM NO.	PART NUMBER	DESCRIPTION	QTY	PAGE
1	0228003	HOPPER SPOUT	1	-
2	0228001-01	OUTER STAY ARM	1	-
3	0228001-02	INNER STAY ARM	1	-
4	0228001-03	PLASTIC BUSH	1	-
5	0228001-04	STAY ARM MOUNTING BRACKET	2	-
6	0228002	SPOUT MOUNTING BRACKET	1	-
7	0228001-06	CATCH	1	-

## PTO CONNECTOR



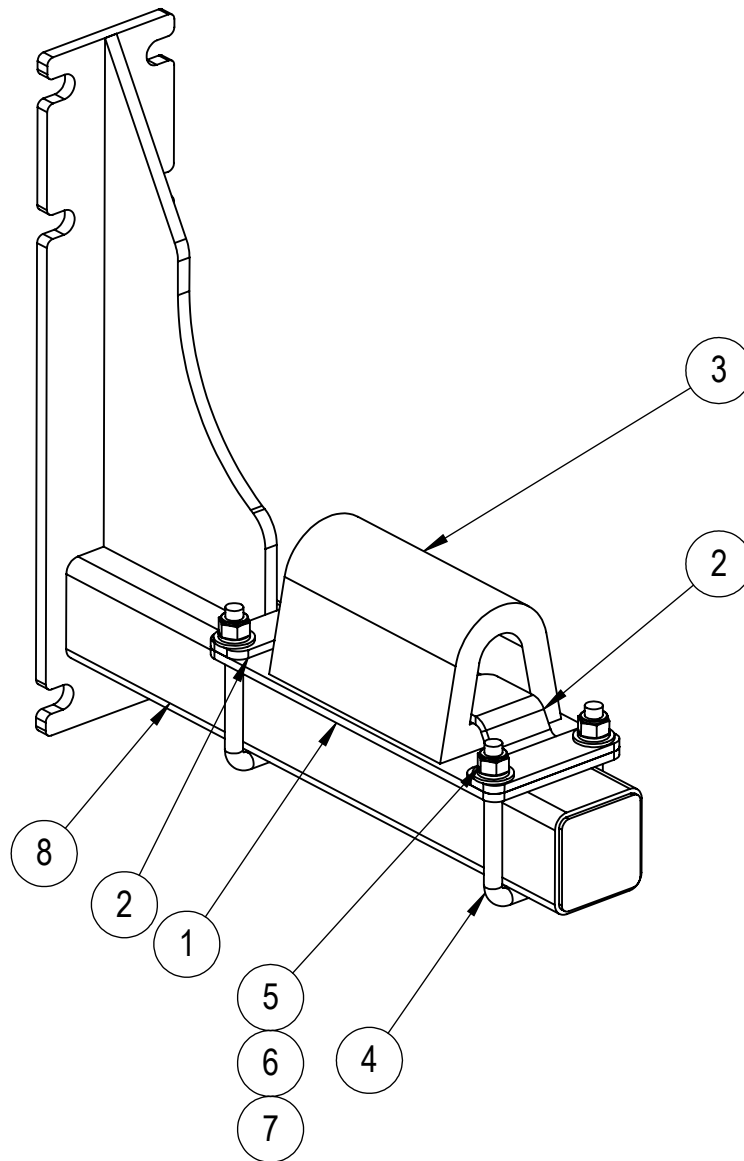
ITEM NO.	PART NUMBER	DESCRIPTION	QTY	PAGE
1	0207033-01	PTO HOUSING	1	-
2	0207033-02	PTO GUARD	1	-
3	2601002	BEARING – UCF210	2	-
4	0207033-04	PTO SPLINE SHAFT	1	-

## OPTION HYDRAULIC DRIVE



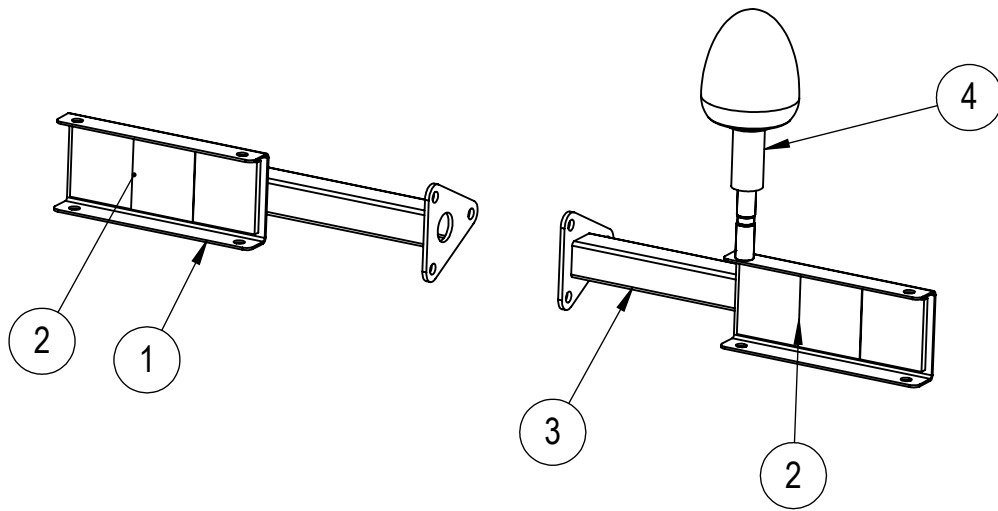
ITEM NO.	PART NUMBER	DESCRIPTION	QTY	PAGE
1	MV 400C	HYDRAULIC MOTOR MV 400C	1	
2	0207092	SPLINE ASSEMBLY	1	
3	0207093	HYDRAULIC MOTOR MOUNTING ASSEMBLY	1	
4	0207091-07	PTO PROTECTION COVER	1	

# AUGER SUPPORT



ITEM NO.	PART NUMBER	DESCRIPTION	QTY	PAGE
1	0207032-05	RUBBER SUPPORT PLATE	1	-
2	0207032-06	CLAMP FOR RUBBER	2	-
3	0220014	AUGER CATCH RUBBER	1	-
4	1212152201	U BOLT M12 x 75 ZINC PLATED	2	-
5	5012004601	M12 HEX NYLOCK NUT ZINC PLATED	4	-
6	4012004601	M12 SPRING WASHER ZINC PLATED	4	-
7	3012004601	M12 FLAT WASHER ZINC PLATED	4	-
8	0231025	AUGER SUPPORT FRAME	1	-

# TAIL LIGHT ASSEMBLY



ITEM NO.	PART NUMBER	DESCRIPTION	QTY	PAGE
1	0219007	TAIL LIGHT WELDED ASSEMBLY LH	1	-
2	23-001	REFLECTORS	2	-
3	0219008	TAIL LIGHT WELDED ASSEMBLY RH	1	-
4	23-003	FLEXIBLE POLE MOUNTED BEACON	1	-