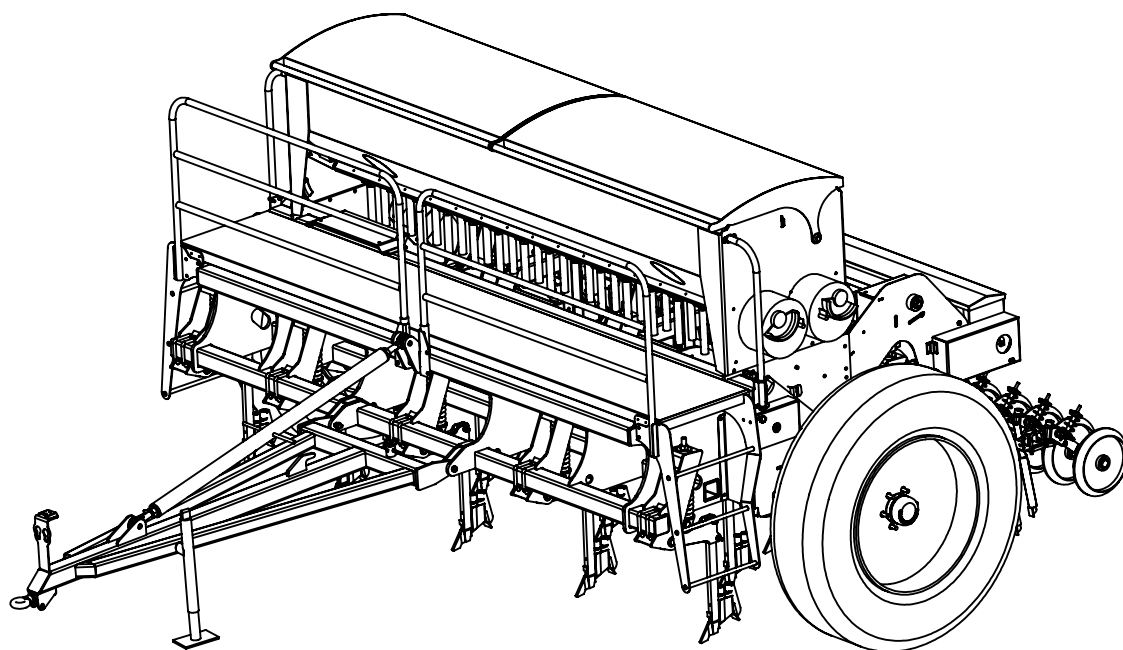
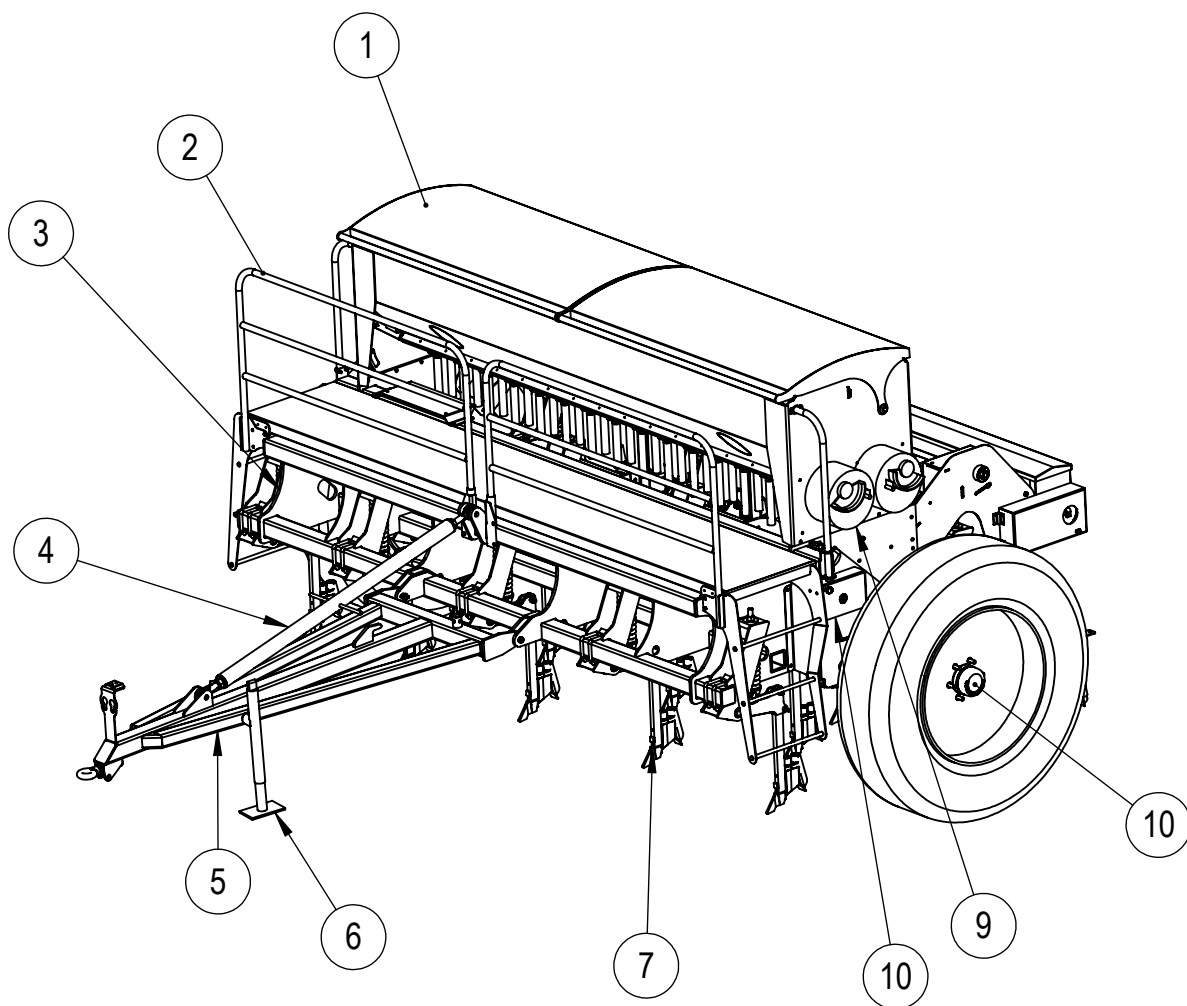


DAVIMAC 'TD' SEED DRILL PARTS LIST



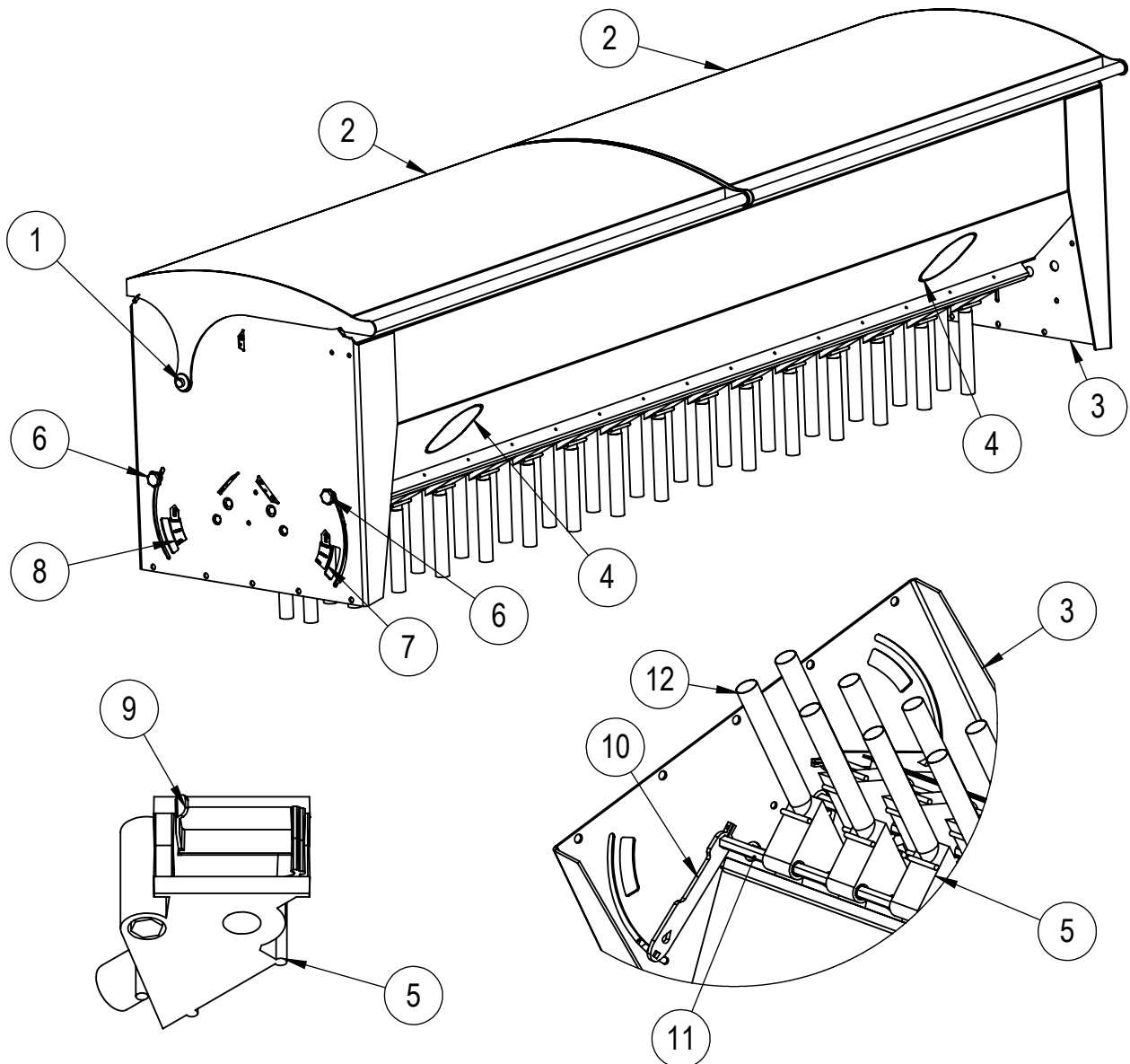
FROM: TD 1914
TO : CURRENT

STANDARD DRILL



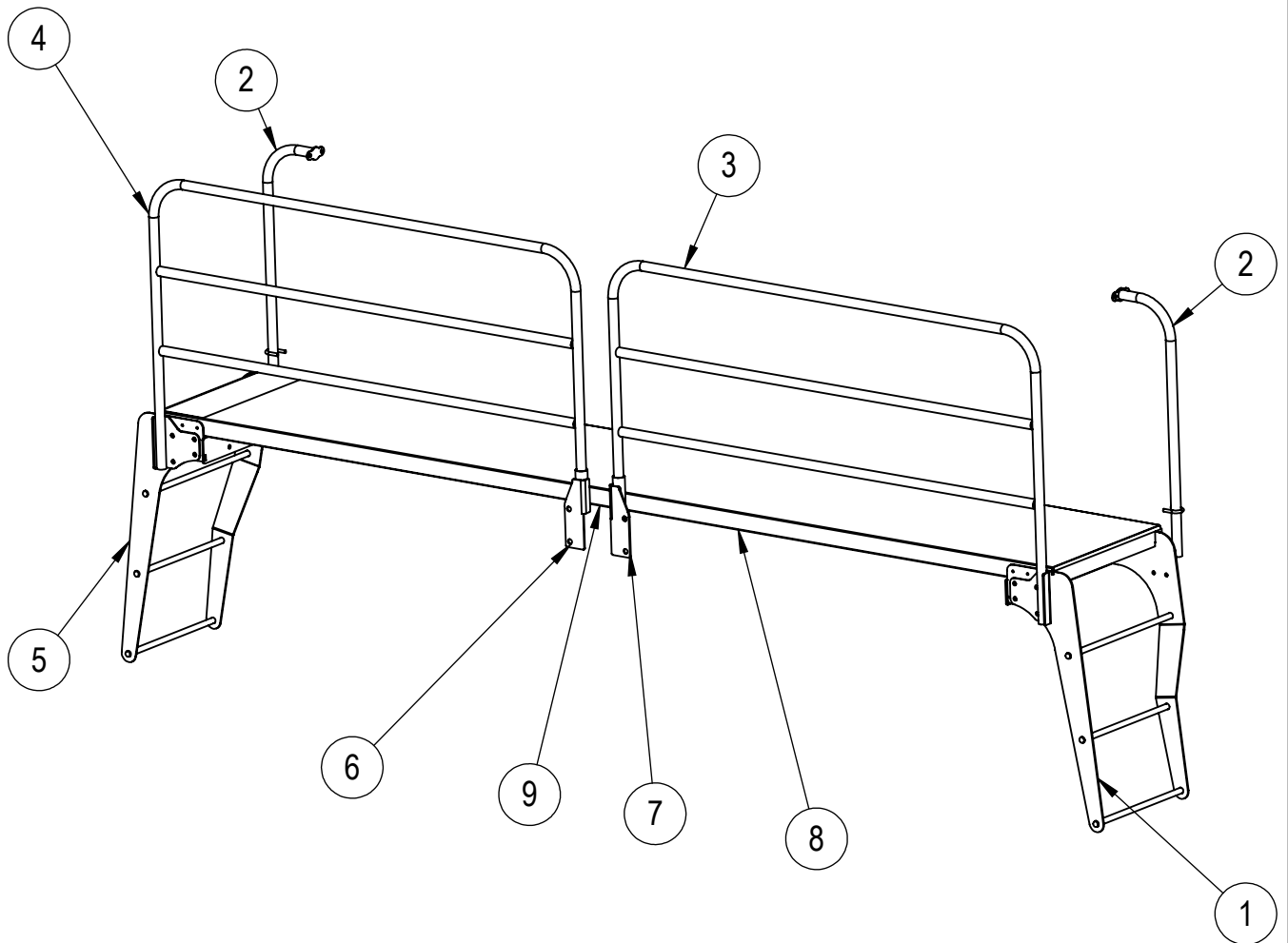
ITEM NO.	PART NUMBER	DESCRIPTION	QTY	PAGE
1	-	SEED BOX ASSEMBLY	1	3
2	-	PLATFORM ASSEMBLY	1	4
3	0102001	FRAME ASSY - TD DRILL	1	-
4	0120113	HITCH LEVELLING BAR	1	5
5	0103001	HITCH TD DRILL	1	5
6	0103004-04	JOCKEY LEG	1	-
7	-	TYNE ASSEMBLY	1	6-8
9	-	TD DRIVE KIT ASSEMBLY	1	11-15
10	-	TD AXLE ASSEMBLY	1	16
10	0107055	CHAIN COVERS	1	9-10

SEED BOX ASSEMBLY



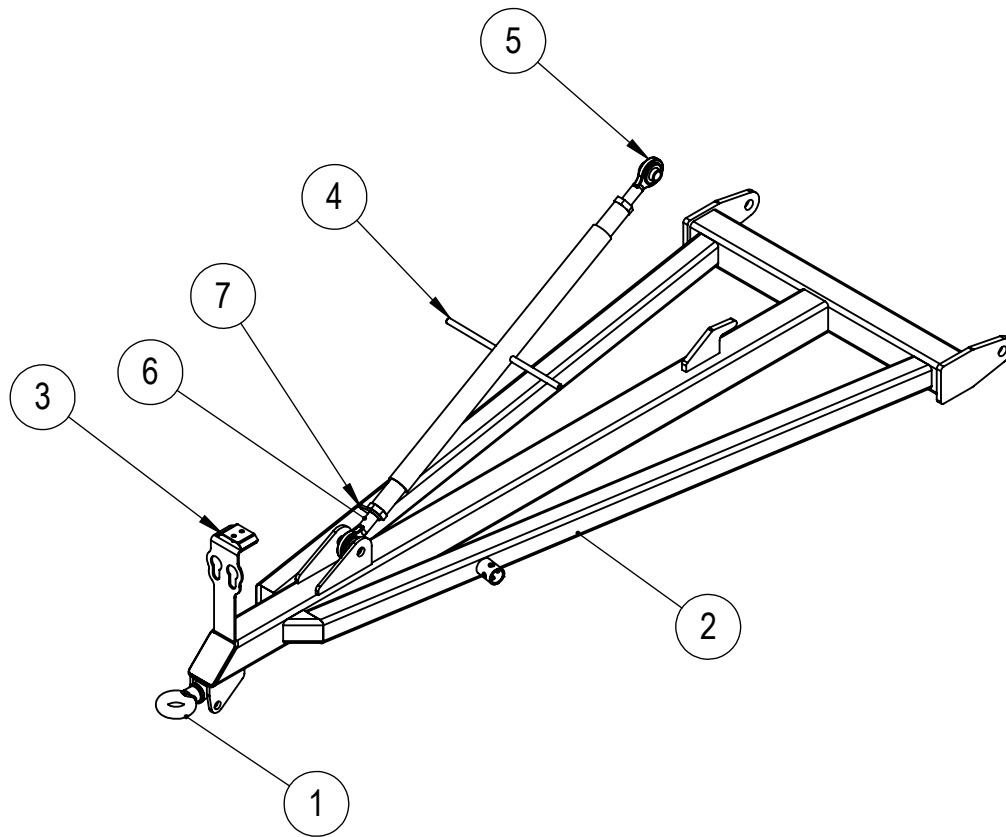
ITEM NO.	PART NUMBER	DESCRIPTION	QTY
1	0105018-06	DOOR HINGE PIN	2
2	0105019	LID	2
3	0105024-05	SEED BOX	1
4	0105014	WINDOW	2
5	1001001	FEED ROLLER	32 - 56
6	0107026-02	KNOB-BLACK SCREW	2
7	0105020-06	RH LABEL COARSE MEDIUM FINE	1
8	0105020-08	LH LABEL COARSE MEDIUM FINE	1
9	1001009	BLANKING PLATE	32 - 56
10	0107026-03	LEVER	2
11	0105024-05	HEXAGON BAR LENGTH TO BE SPECIFIED	4
12	0105024-06	38mm BARFLOW HOSE	LENGTH TO BE SPECIFIED

PLATFORM ASSEMBLY



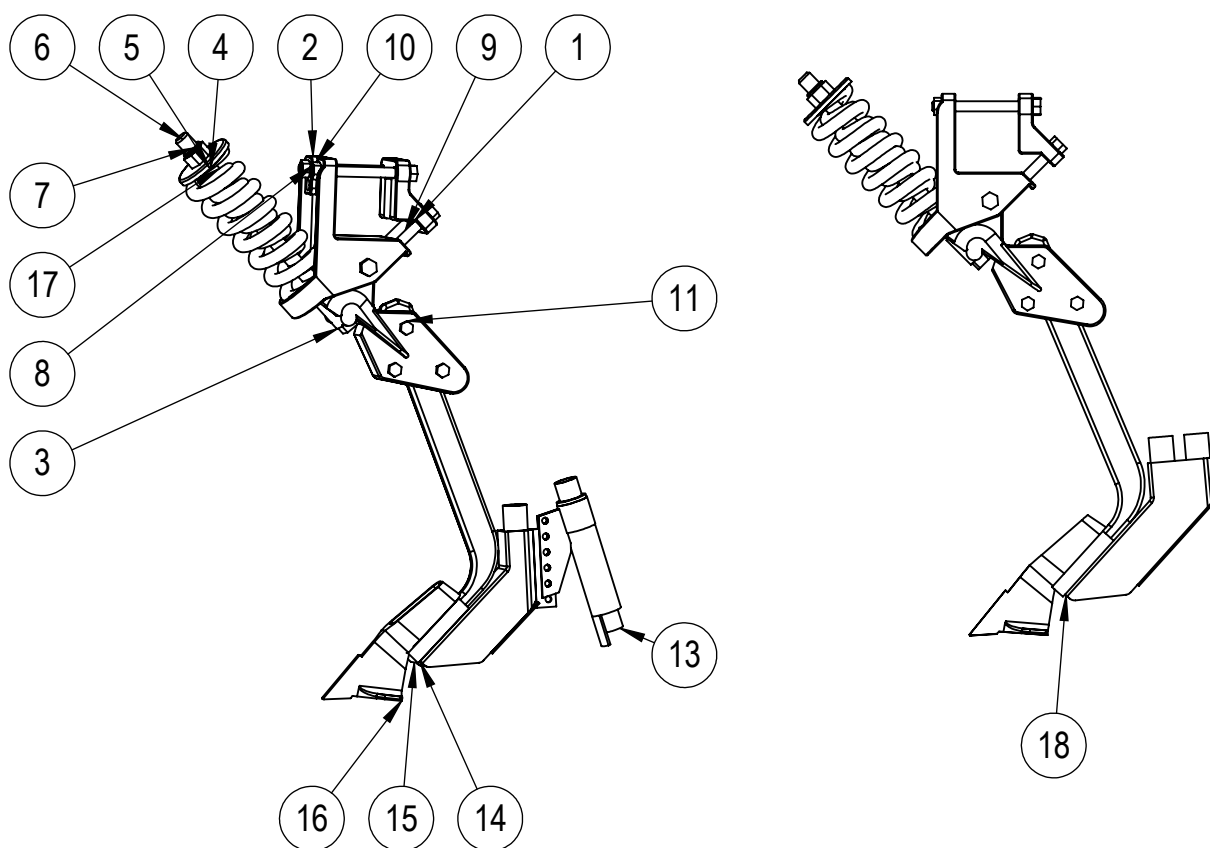
ITEM NO.	PART NUMBER	DESCRIPTION	QTY
1	0106029	STEPS RIGHT HAND TD DRILL	1
2	0106031	HANDRAIL SIDE	2
3	0106030	HANDRAIL MAIN TD DRILL RIGHT HAND	1
4	0106030LH	HANDRAIL MAIN TD DRILL LEFT HAND	1
5	0106029LH	STEPS LEFT HAND TD DRILL	1
6	0106032	HANDRAIL SUPPORT LEFT HAND	1
7	0106032	HANDRAIL SUPPORT RIGHT HAND	1
8	0106028-01	PLATFORM DECK	1
9	0106034-01	SUPPORT CHANNEL	1

HITCH TD DRILL



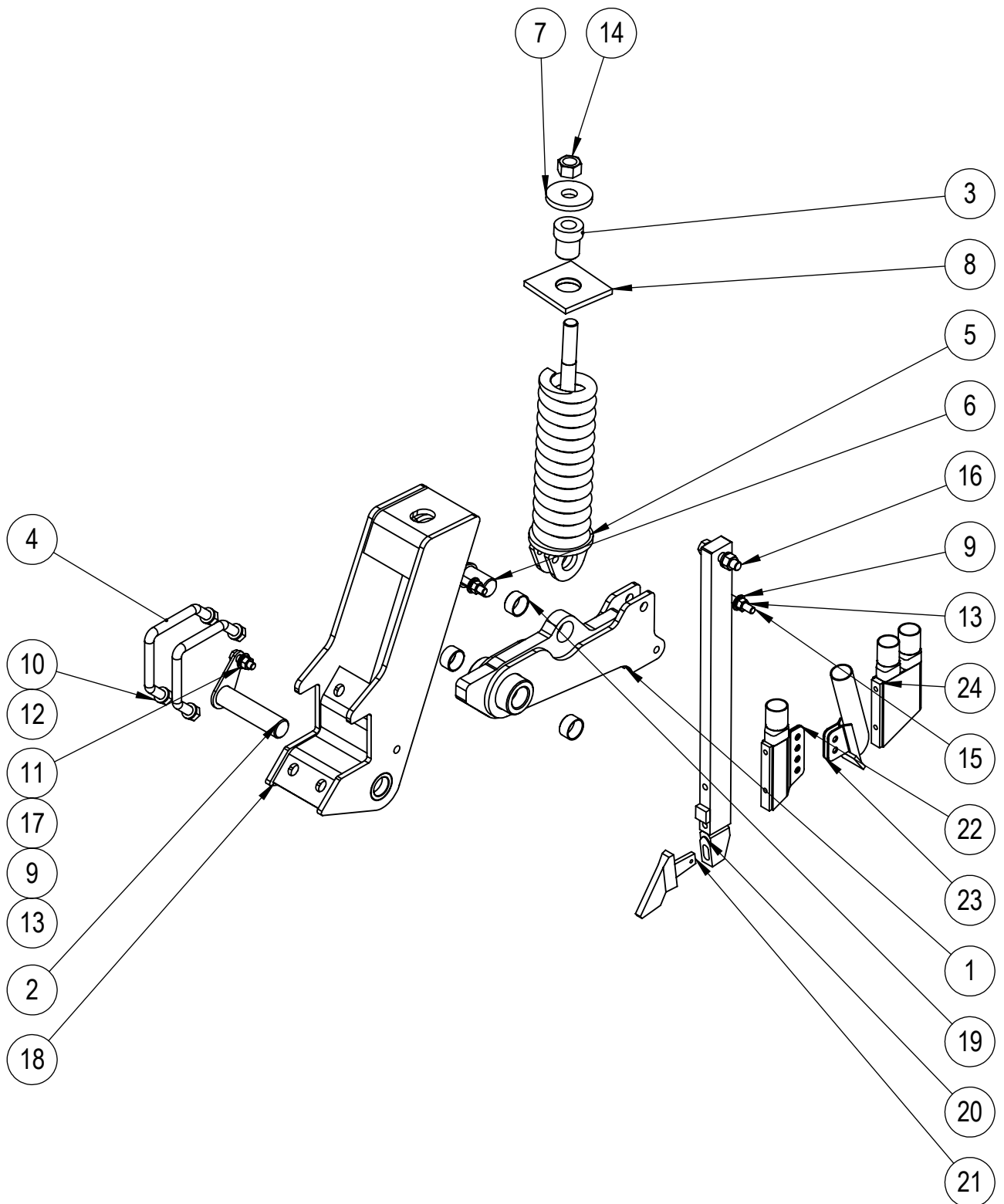
ITEM NO.	PART NUMBER	DESCRIPTION	PARTS LIST/QTY.
1	0103003-14	COUPLING	1
2	0103001-12	HITCH TD DRILL	1
3	0103004-07	HYDRAULIC HOSE CLAMP	1
4	0120123-01	HITCH LEVELLING BAR-BODY	1
5	0120073-02	END FOR TOP LINK LH	1
6	0120073-01	END FOR TOP LINK RH	1
7	0120074	1 1/4" LOCKING COLLAR	1

TYNE ASSEMBLY



ITEM NO.	PART NUMBER	DESCRIPTION	SINGLE SHOOT / QTY.	DUAL SHOOT / QTY
1	0120050	CLAMP - BRACKET	1	1
2	0120051	CLAMP - SPRINGBASE	1	1
3	0120052	SHANK ADAPTOR	1	1
4	0120054	COMPRESSION SPRING	1	1
5	0120055	98 DIA WASHER	1	1
6	0120056	M24 x 400 BOLT	1	1
7	0120057	M24 LOCKNUT	1	1
8	0120058	M16 x 160 BOLT	3	3
9	0120059	M16 x 100 BOLT	2	2
10	0120060	M16 NUT	3	3
11	0120061	M12 x 75 BOLT	3	3
12	0120062	M12 LOCKNUT	4	3
13	0120085	DUAL SHOOT BOOT OPTIONAL	1	-
14	0120122	SINGLE SHOOT BOOT - DUAL BOLT TYNE	1	-
15	0120053-DB	DUAL BOLT SHANK	1	1
16	0120080	DUAL BOLT POINT 50mm T	1	1
17	0120116	OPTIONAL INNER SPRING	1	1
18	0120121	DUAL SHOOT BOOT	-	1

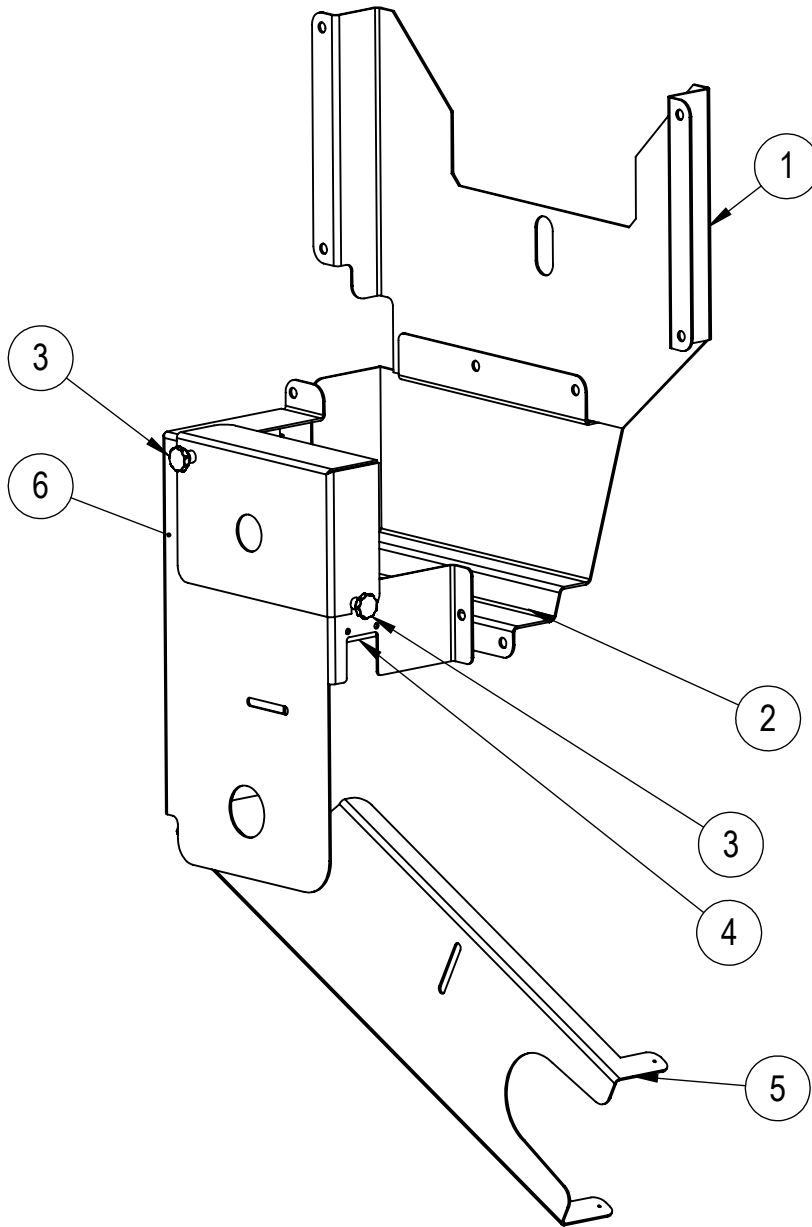
DAVIMAC TYNE ASSEMBLY



TYNE MATERIAL LIST

ITEM NO.	PART NUMBER	DESCRIPTION	DUAL SHOOT/QTY.	ADJUSTABLE DUAL SHOOT/QTY.
1	0112014	SHANK HOLDER	1	1
2	0112015	SHANK SWIVEL PIN	1	1
3	0112010-01	NYLON SLEEVE	1	1
4	1616322901	V-BOLT M16x157x144 ZINC PLATED	2	2
5	0112012	COMPRESION SPRING ASSEMBLY	1	1
6	0112016	SPRING SWIVEL PIN	1	1
7	0112010-04	10mm WASHER	1	1
8	0112010-05	SPRING ROCKER PLATE	1	1
9	3012004601	M12 FLAT WASHER ZINC PLATED	3	3
10	4016004601	M16 SPRING WASHER ZINC PLATED	5	5
11	4012004601	M12 SPRING WASHER ZINC PLATED	3	3
12	2016004601	M16 HEX NUT ZINC PLATED	5	5
13	2012004601	M12 HEX NUT ZINC PLATED	3	3
14	2024004601	M24 HEX NUT	1	1
15	1012164601	M12 x 80 BOLT GRAD 8.8 ZINC PLATED	2	2
16	1016158801	M16 x 75 BOLT GRADE 8.8 ZINC PLATED	1	1
17	1012084601	M12 x 40 BOLT GRAD 8.8 ZINC PLATED	1	1
18	0112017	SPRING HOLDER	1	1
19	GSM-3539-20	ID35xOD39x20Lg	3	3
20	0112018	SHANK	1	1
21	0112019	POINT	1	1
22	0112024	SINGLE SHOOT BOOT	-	1
23	0112023	SINGLE SEED TUBE SPRING TYNE	-	1
24	0112020	DUAL SEED TUBE SPRING TYNE	1	1

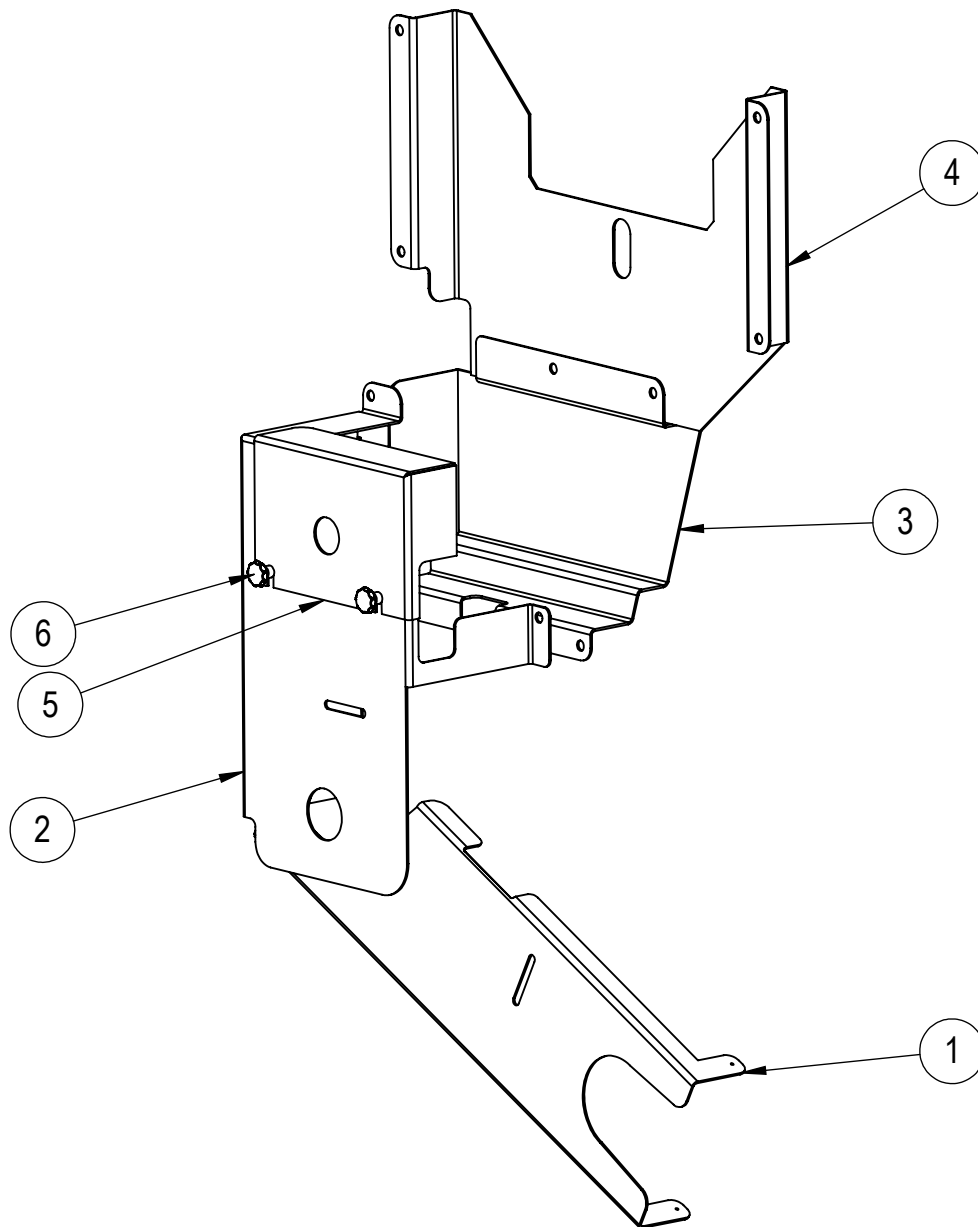
CHAIN GUARD ASSEMBLY



TD 1914
TO
TD 2616

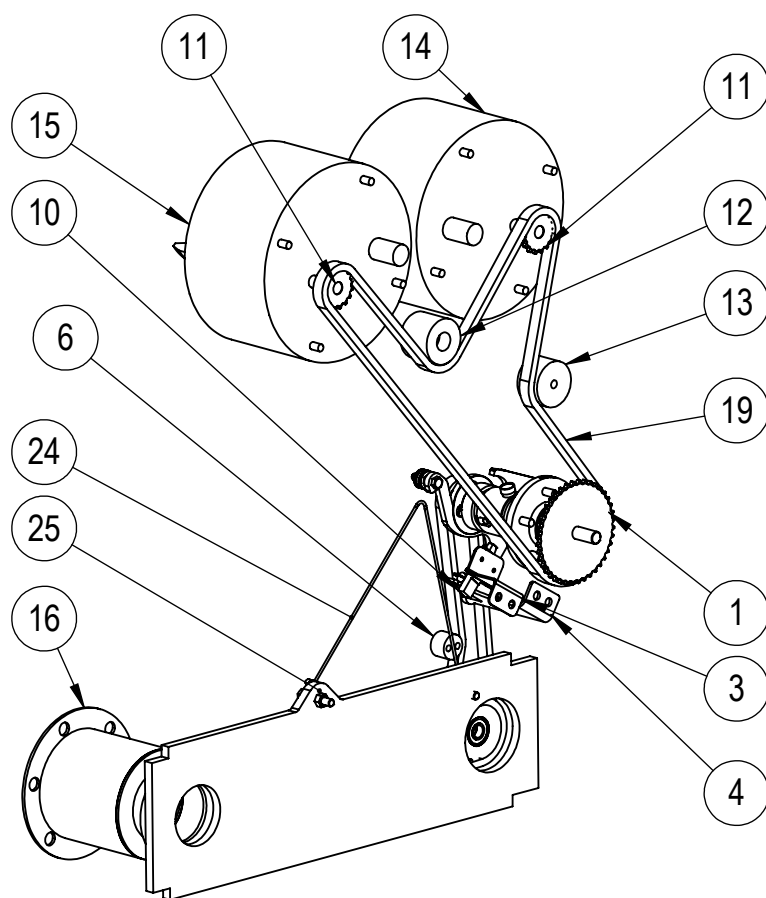
ITEM NO.	PART NUMBER	DESCRIPTION	QTY.
1	0107021-10	CHAIN COVER TD INNER TOP	1
2	0107046	CHAIN COVER TD INNER BOTTOM	1
3	2507001	KNOB - BLACK SCREW	2
4	0115001-03	NYLON WEAR PLATE	1
5	0107055-01-UP TO 2616	CHAIN COVER TD WHEEL	1
6	0107055-02	CHAIN COVER TD OUTER	1
7	0107055-03	CHAIN COVER TD OUTER	1

CHAIN GUARD FROM TD2716

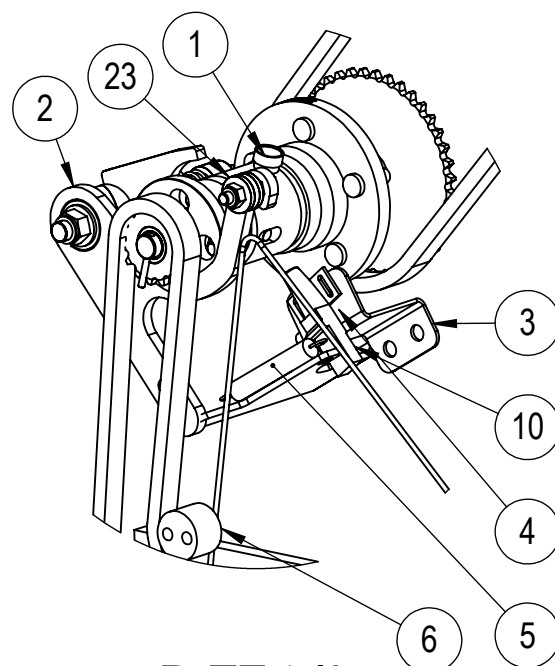
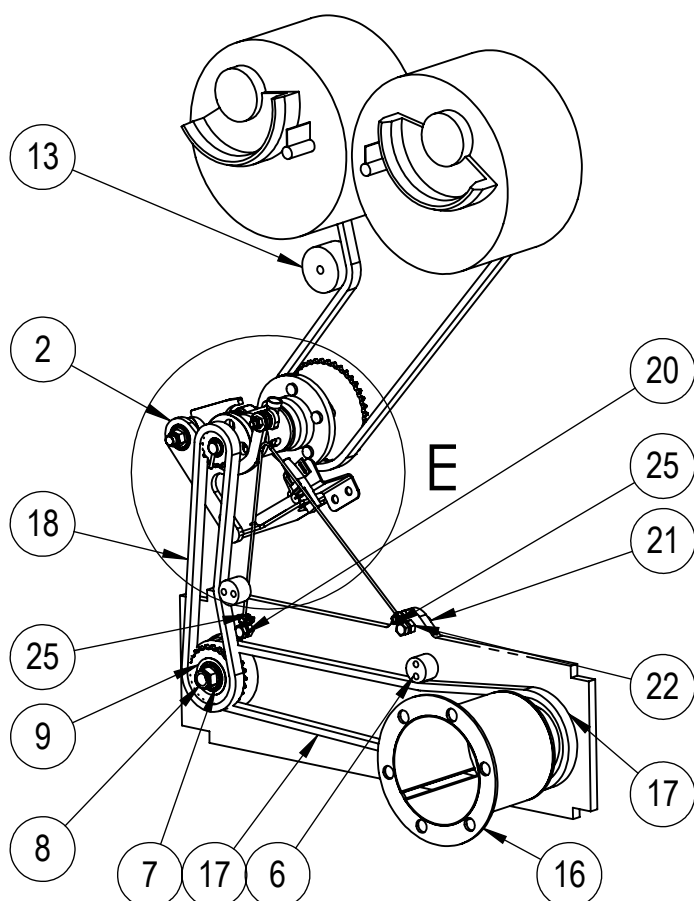


ITEM NO.	PART NUMBER	DESCRIPTION	QTY
1	0104021-01	CHAIN COVER TD WHEEL	1
2	0115001-01	CHAIN COVER TD OUTER	1
3	0107046	CHAIN COVER TD INNER BOTTOM	1
4	0107021-10	CHAIN COVER TD INNER TOP	1
5	0115001-02	CHAIN COVER TD OUTER	1
6	2507001	KNOB - BLACK SCREW	2

TD DRIVE KIT ASSEMBLY



TD 1914
TO
TD 2616

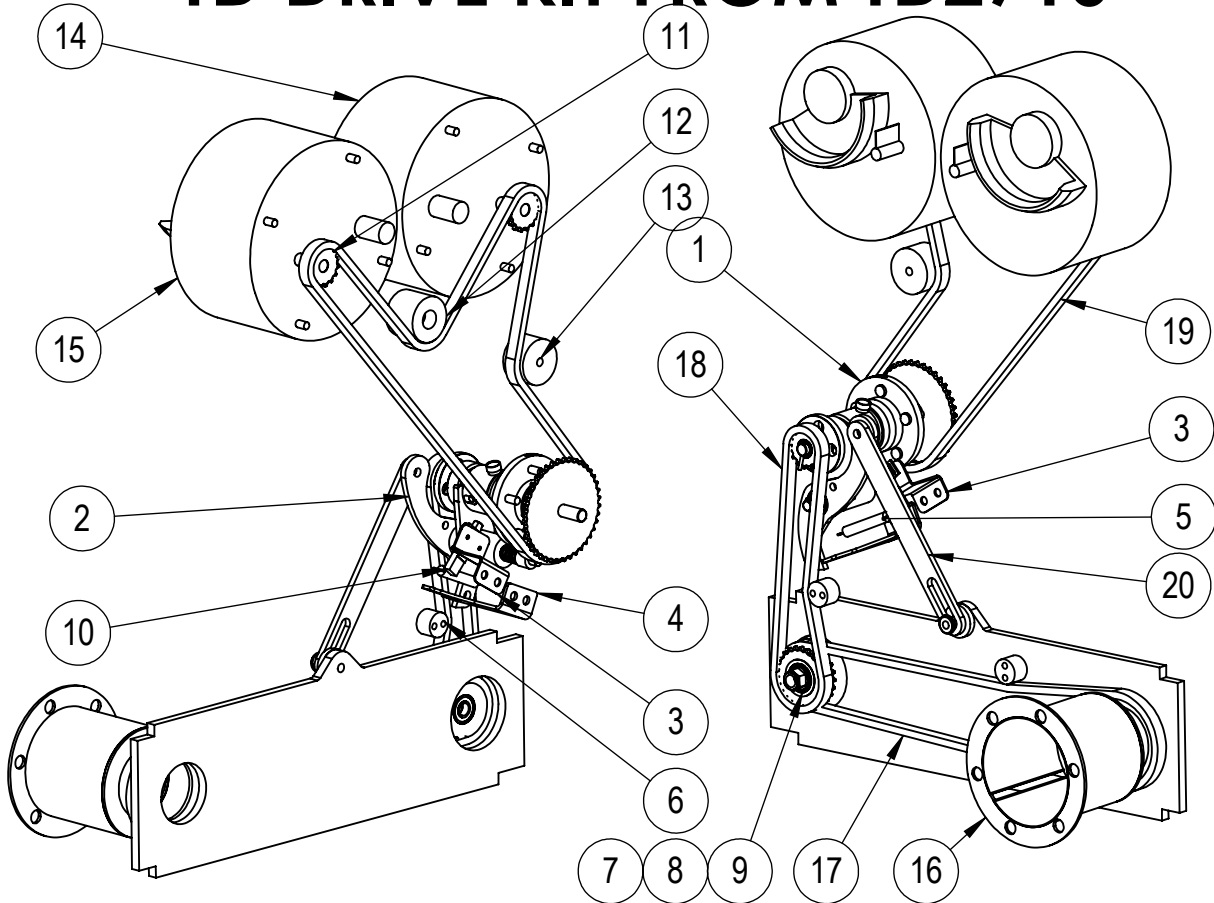


DETAIL E
SCALE 1 : 6

TD DRIVE KIT MATERIAL LIST

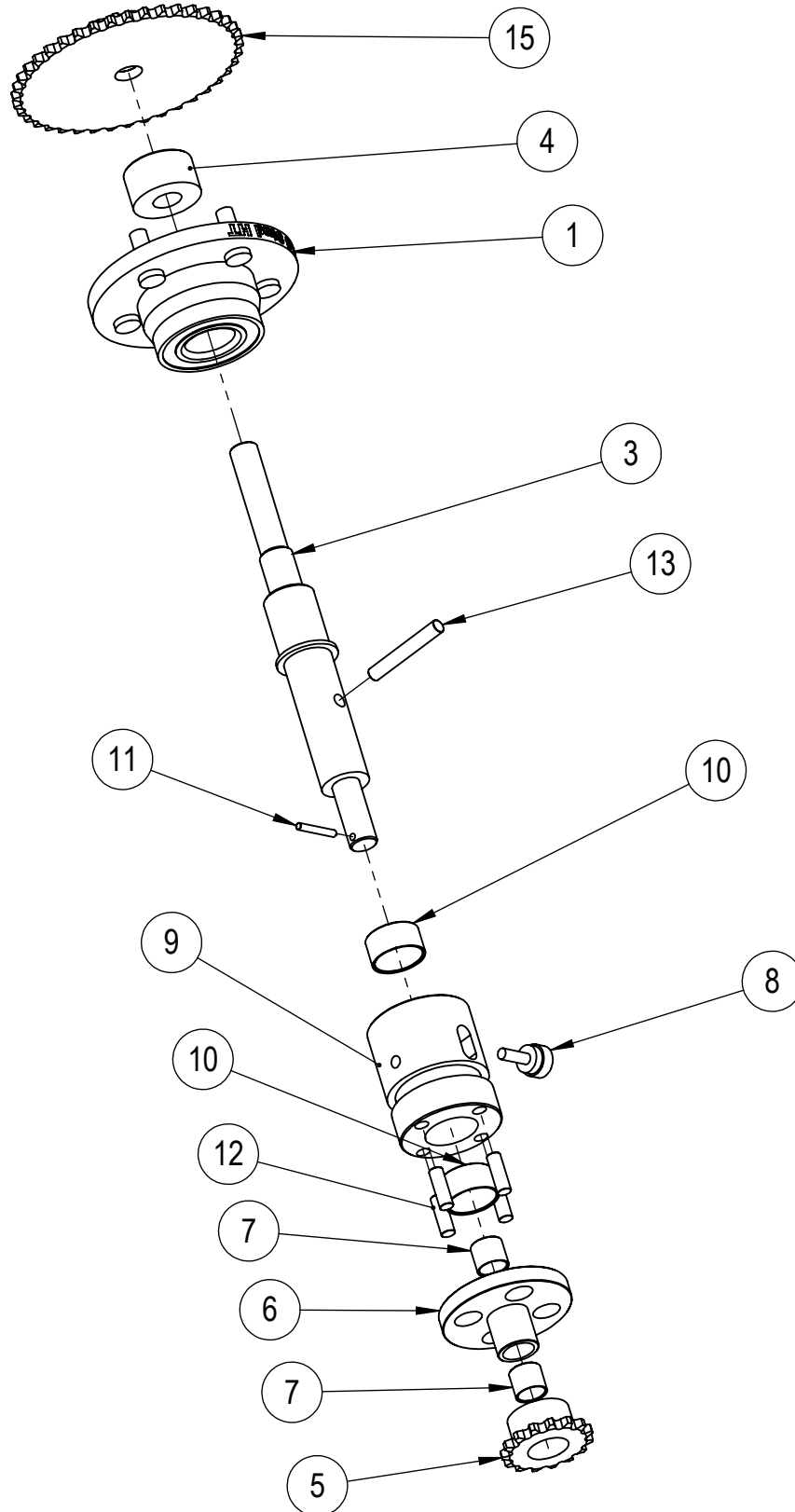
ITEM NO.	PART NUMBER	DESCRIPTION	QTY.
1	0107040	DRIVE FRAME SPINDLE	1
2	0107042	CLUTCH LEVER	1
3	0107040-13	ACRE METRE SENSOR MOUNTING BRACKET	1
4	0107042-05	CLUTCH STOP	1
5	0107043-04	PASTURE SEEDER SPRING	1
6	0107049	NYLON CHAIN TENSIONER	2
7	3020004601	M20 FLAT WASHER ZINC PLATED	1
8	5020004601	M20 HEX NYLOCK NUT ZINC PLATED	1
9	0107047	DOUBLE SPROCKET	1
10	0120024-01	ACRE METRE SENSOR	1
11	2402000-16-20	Simplex 16-20 BORE	2
12	2404000_75X60	CHAIN TENSIONER 75 x 60	1
13	2404000_75X45	CHAIN TENSIONER 75 X 45	1
14	2411001	VARIBOX 2 SPEED RH	1
15	2411001 M	VARIBOX 2 SPEED LH	1
16	0107023	DRIVE GEAR ASSEMBLY	1
17	CHAIN 1	08B CHAIN	1
18	CHAIN 2	08B CHAIN	1
19	CHAIN 3	08B CHAIN	1
20	1012084601	M12 x 40 BOLT GRAD 8.8 ZINC PLATED	1
21	1012124601	M12 x 60 BOLT GRAD 8.8 ZINC PLATED	1
22	2012004601	M12 HEX NUT ZINC PLATED	3
23	0107042-15	NYLON PULLEY	1
24	2528001	4mm WIRE ROPE	1
25	2527001	4mm WIRE ROPE GRIP	2

TD DRIVE KIT FROM TD2716



ITEM NO.	PART NUMBER	DESCRIPTION	QTY
1	0107040	DRIVE FRAME SPINDLE	1
2	0107054	TD CLUTCH LEVER	1
3	0107040-13	ACRE METRE SENSOR MOUNTING BRACKET	1
4	0107042-05	CLUTCH STOP	1
5	0107043-04	PASTURE SEEDER SPRING	1
6	0107049	NYLON CHAIN TENSIONER	2
7	3020004601	M20 FLAT WASHER ZINC PLATED	1
8	5020004601	M20 HEX NYLOCK NUT ZINC PLATED	1
9	0107047	DOUBLE SPROCKET	1
10	0120024-01	ACRE METRE SENSOR	1
11	2402000-16-20	Simplex 16-20 BORE	2
12	2404000_75X60	CHAIN TENSIONER 75 x 60	1
13	2404000_75X45	CHAIN TENSIONER 75 X 45	1
14	2411001	VARIBOX 2 SPEED RH	1
15	2411001 M	VARIBOX 2 SPEED LH	1
16	0107023	DRIVE GEAR ASSEMBLY	1
17	CHAIN 1	08B CHAIN	1
18	CHAIN 2	08B CHAIN	1
19	CHAIN 3	08B CHAIN	1
20	0107054-02	CLUTCH LINK	1
21	0107060	CLUTCH SPACER	1
22	0104016-05	CLUTCH SPACER WASHER	1

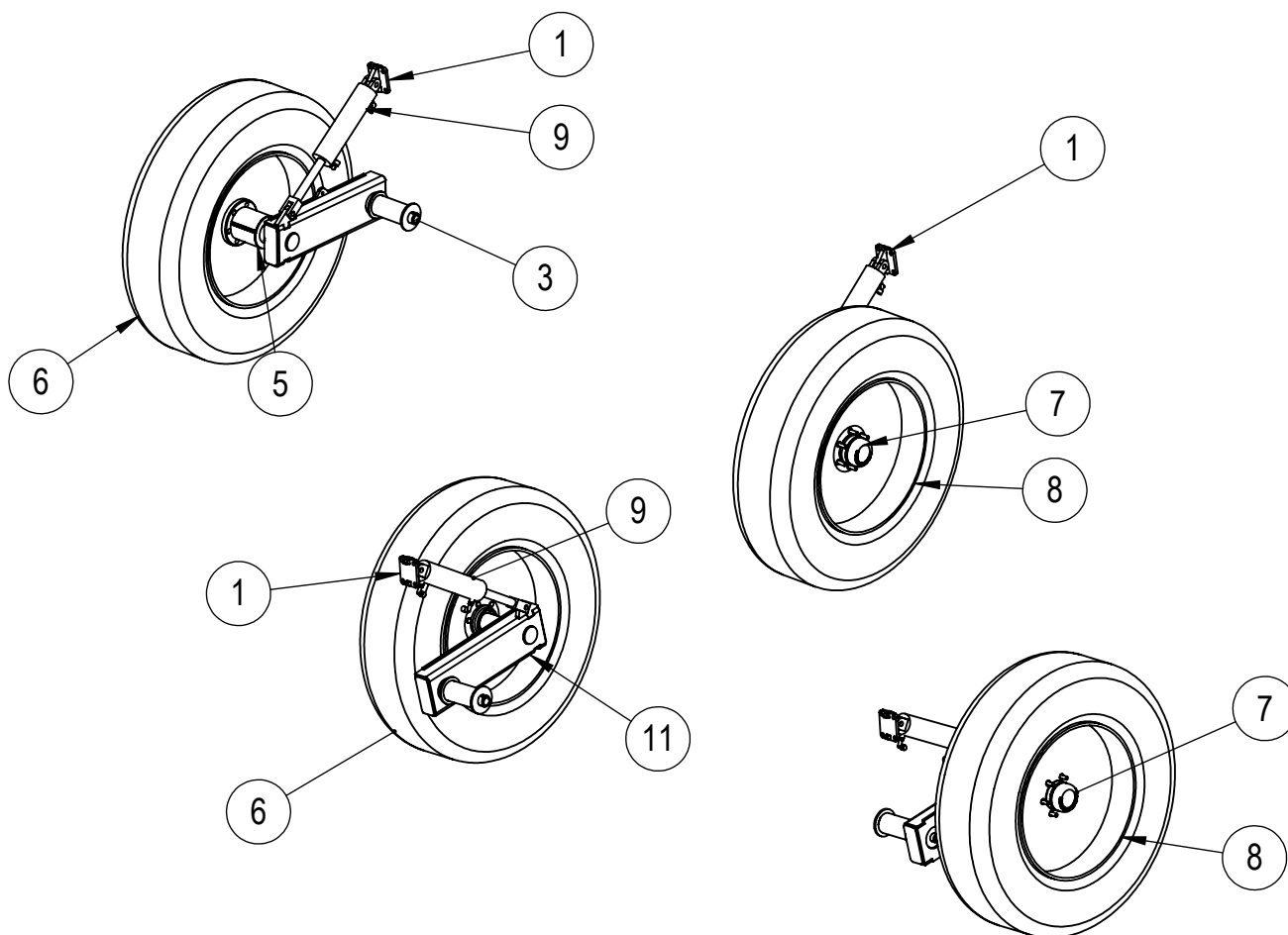
TD DRIVE CLUTCH ASSEMBLY



TD DRIVE CLUTCH MATERIAL

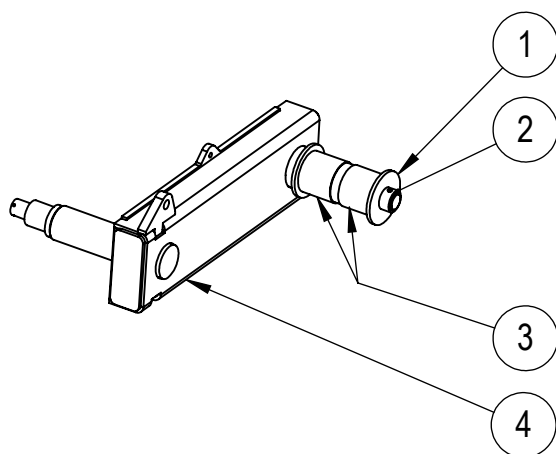
ITEM NO.	PART NUMBER	DESCRIPTION	TD 250mm/QTY.	TD 175mm/QTY.	TD 225mm/QTY.
1	2203002	37mm 5 STUD HUB	1	1	1
2	0107040-01	CLUTCH DRIVE SHAFT	1	1	1
3	0107010-01	M24 SPACER	1	1	1
4	2402000-15-30	Simplex 15-30 BORE	1	-	-
4	2402000-22-30	Simplex 22 -30 BORE	-	1	-
4	2402000-17-30	Simplex 17-30 BORE	-	-	1
5	0107040-12	CLUTCH DRIVE FREE	1	1	1
6	GSM-2023-20	ID20xOD23x20Lg	2	2	2
7	GSM-3539-20	ID35xOD39x20Lg	2	2	2
8	0120024-02	ACRE METRE MAGNET	1	1	1
9	0107040-14	CLUTCH DRIVE FIXED	1	1	1
10	8005060001	SPRING ROLL PIN DIA 5 x 36LG	1	1	1
11	8010050001	SPRING ROLL PIN DIA 10 x 30 LG	4	4	4
12	8010140001	SPRING ROLL PIN DIA 10 x 70 LG	1	1	1
13	0108033	DRIVE FRAME SPROCKET ASSEMBLY	1	1	1

TD AXLE ASSEMBLY

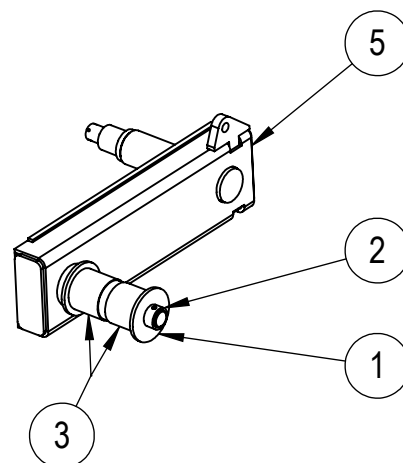


ITEM NO.	PART NUMBER	DESCRIPTION	QTY	PAGE
1	0120013	CYLINDER TOP MOUNT	2	—
3	0104016	TD - AXLE LH	1	13
5	0107023	DRIVE GEAR ASSEMBLY	1	-
6	2202010_TD	TYRE - SIZE 380/85 R24	2	-
7	2203011	6 STUD BEDFORD HUB	2	-
8	2201008_34R	WHEEL - 610 DIA x 300	2	-
11	0104017	TD - AXLE RH	1	13
9	0104018	TD HYDRAULIC CYLINDER	2	

TD AXLE RH AND LH



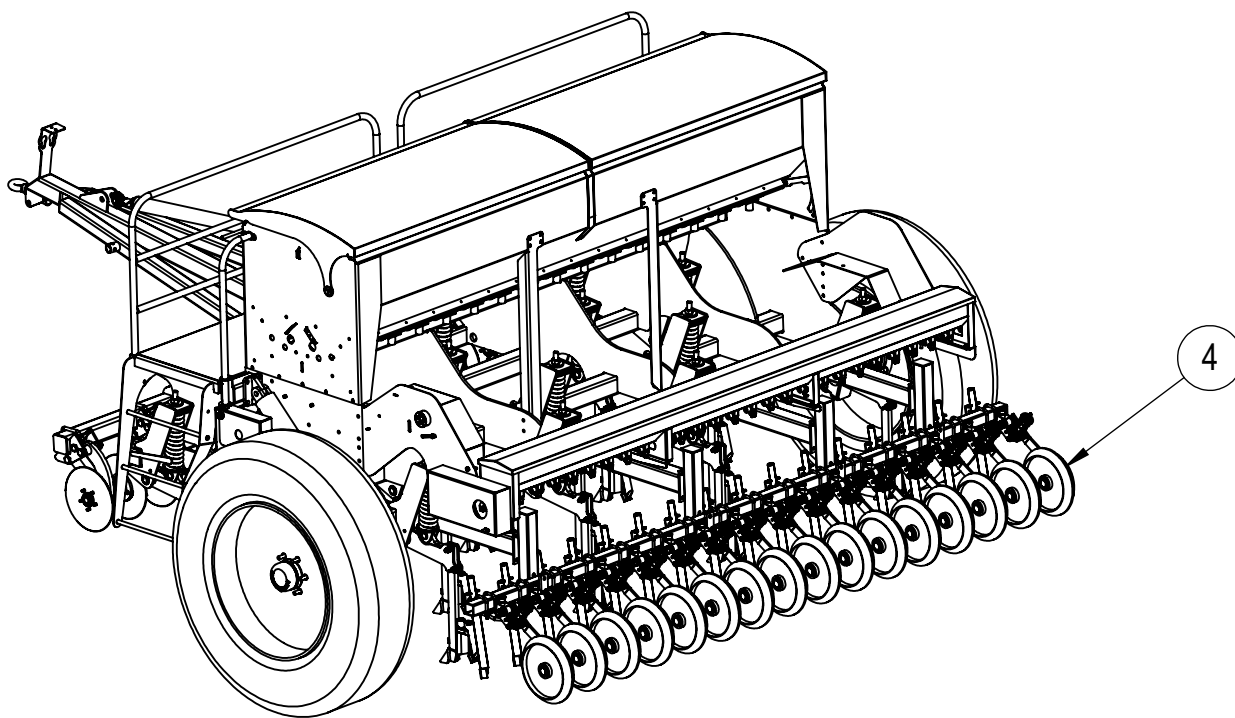
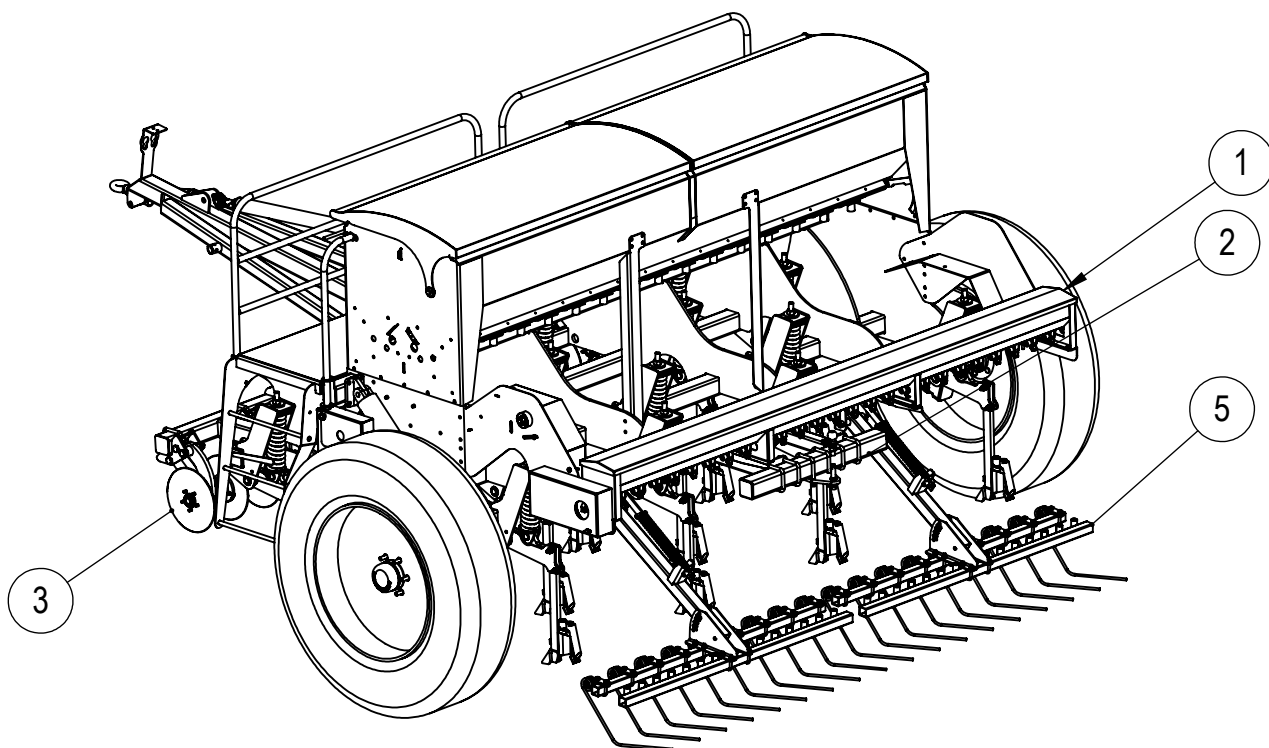
TD - AXLE LH
0104016



TD - AXLE RH
0104017

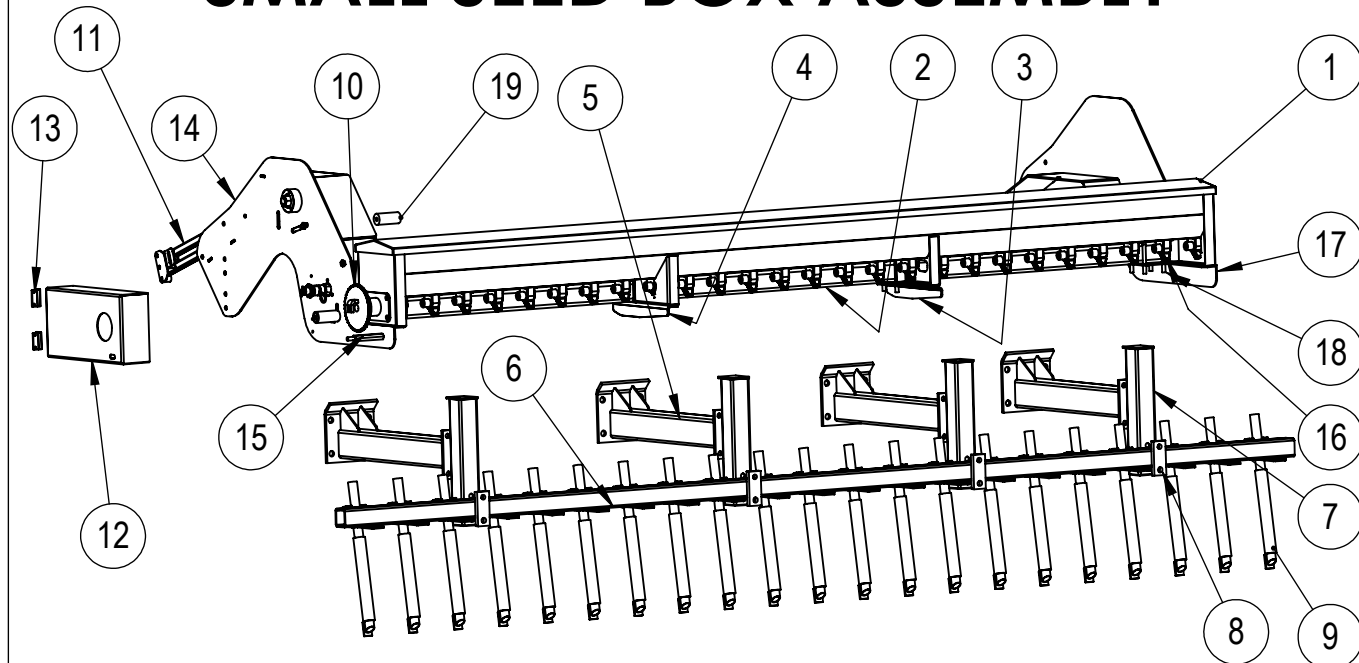
ITEM NO.	PART NUMBER	DESCRIPTION	QTY LH	QTY RH
1	0104016-03	AXEL WASHER	1	1
2	0104016-04	AXEL BUSH	1	1
3	GSM-110115-100	BEARING	2	2
4	0104016 W	AXEL WELDED ASSEMBLY LH	1	-
5	0104017 W	AXEL WELDED ASSEMBLY RH	-	1

OPTIONAL ACCESSORIES



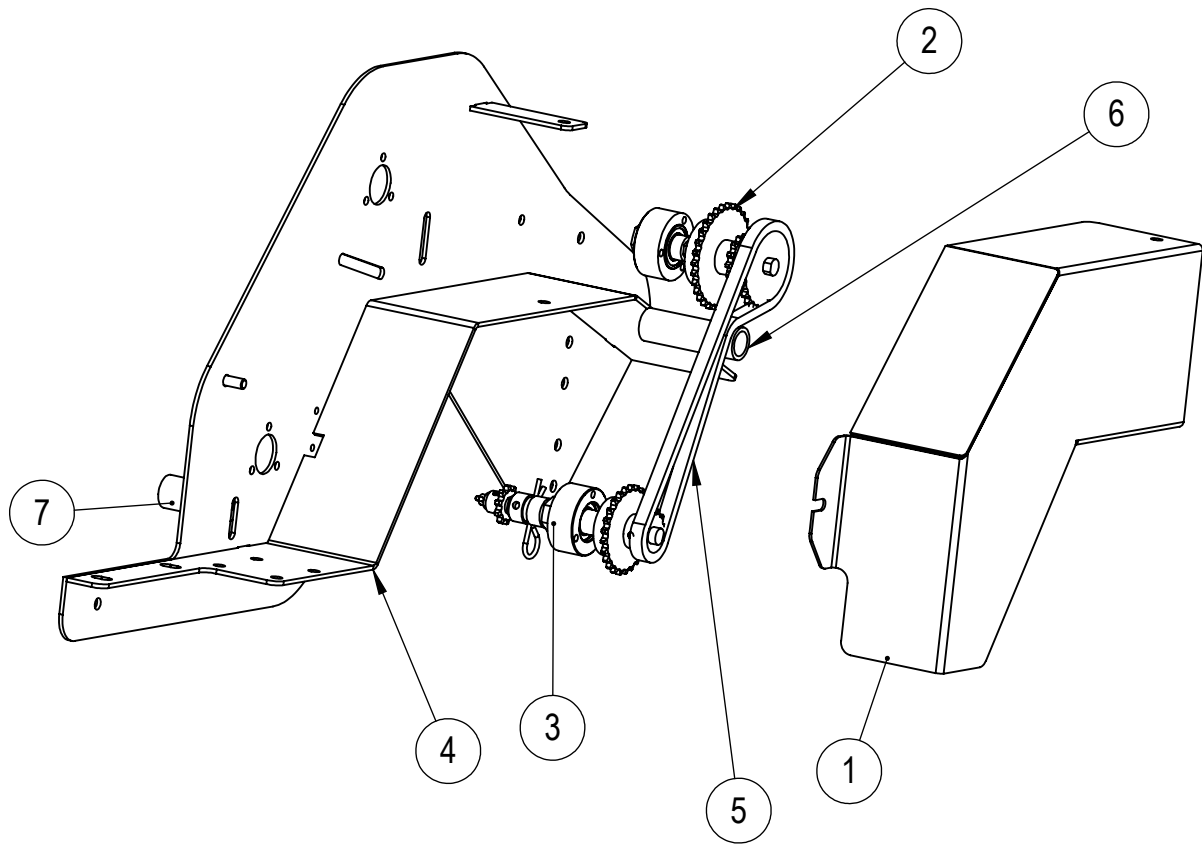
ITEM NO.	PART NUMBER	DESCRIPTION	QTY	PAGE
1	0108005	SMALL SEED BOX	1	19-22
2	0103006	TOW BAR ASSEMBLY	1	23
3	0110038	COULTER BAR ASSEMBLY	1	24
4	0111033	PRESS WHEEL ASSEMBLY	1	REFER TO OWNERS MANUAL
5	0101001	HARROW ASSEMBLY	2	REFER TO OWNERS MANUAL

SMALL SEED BOX ASSEMBLY



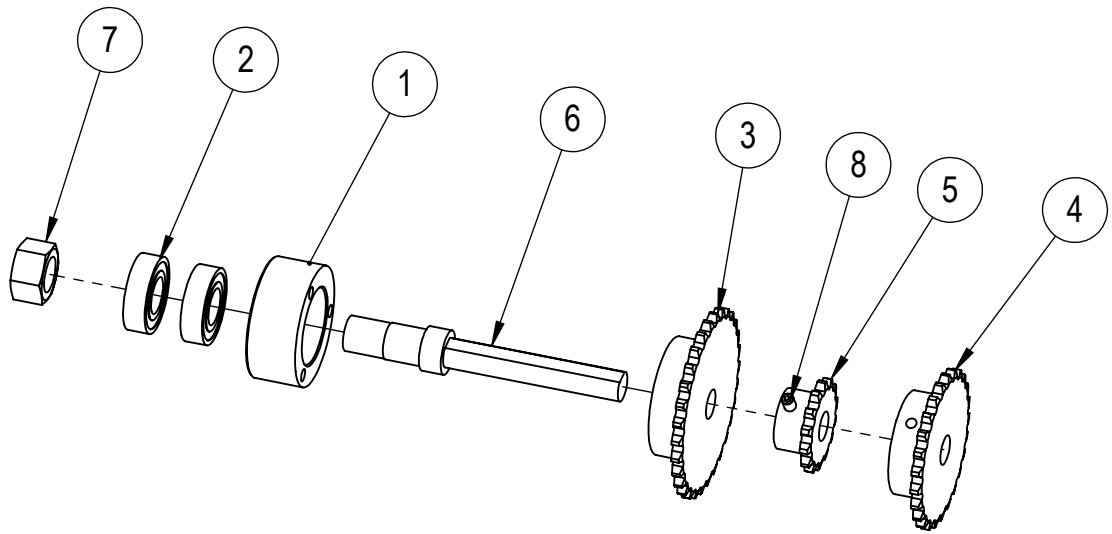
ITEM NO.	PART NUMBER	DESCRIPTION	QTY.
1	0108000	SMALL SEED BOX	1
2	0108023-10	SMALL SEED BOX MOUNTING RHS	1
3	0108004-01	SMALL SEED BOX RH MIDDLE MOUNT	1
4	0108004-02	SMALL SEED BOX LH MIDDLE MOUNT	1
5	0111003	PRESSWHEEL SUPPORT BEAM	4
6	0111005	PRESSWHEEL CROSS BEAM	1
7	0111004	PRESSWHEEL POST	4
8	0111006	PRESSWHEEL LOCKING PLATE	4
9	0108010	SMALL SEED FLEXI BOOTS OPTIONAL	16-28
10	0108030	SMALL SEED BOX DRIVE	1
11	0108034	CHAIN GUIDE	1
12	0108032-10	CHAIN COVER SMALL SEED BOX OUTER	1
13	2501001	HINGE – BUTT	2
14	0108032	SMALL SEED BOX DRIVE ASSEMBLY	1
15	2005064-118	HEX BAR STANDOFF 118Lg	1
16	0120076	SMALL FEEDER ROLLER	16-28
17	0108044	SSB RH MOUNTING	1
18	1212152201	U BOLT M12 x 75 ZINC PLATED	6
19	2404000_40X90	CHAIN TENSIONER 40 X 90	1

SMALL SEED BOX DRIVE



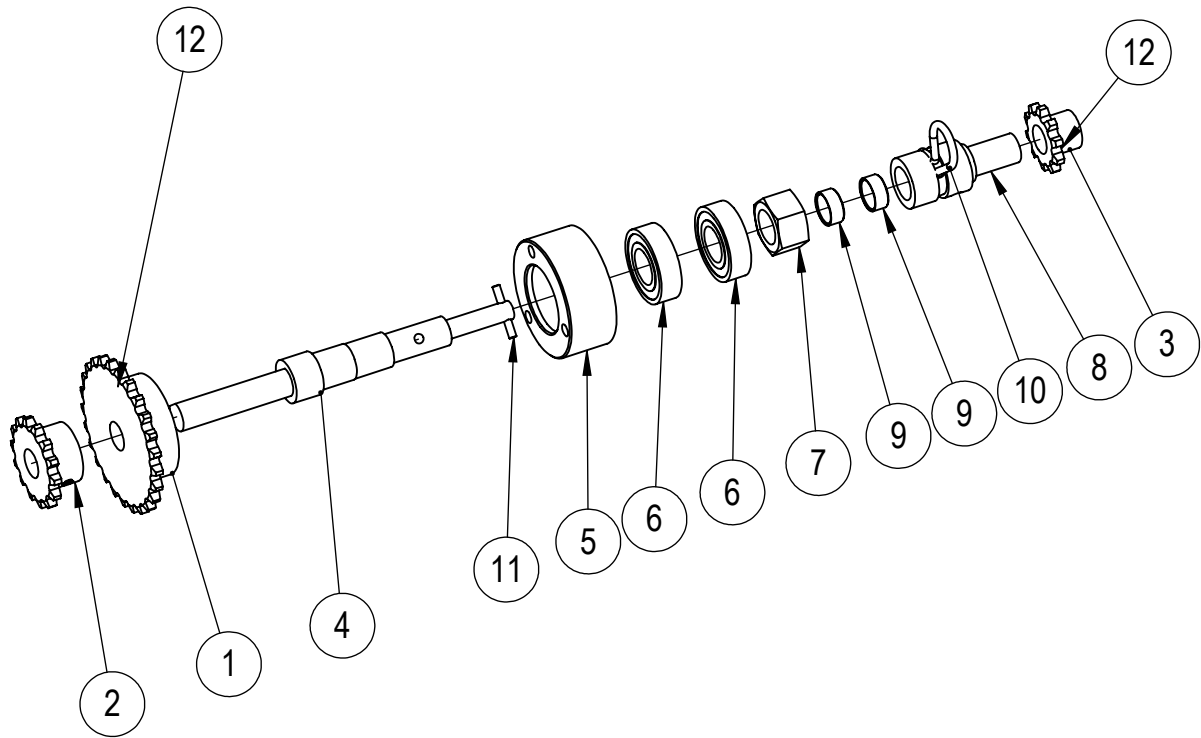
ITEM NO.	PART NUMBER	DESCRIPTION	QTY
1	0108035	INNER CHAIN COVER	1
2	0108037	FRONT SPROCKET ASSEMBLY	1
3	0108036	SMALL SEED BOX REAR SPROCKET ASSEMBLY	1
4	0108043	SML SEED BOX MOUNTING	1
5	CHAIN	CHAIN 08B	1
6	2404000_40X130	CHAIN TENSIONER 40 X 130	1
7	2404000_40X90	CHAIN TENSIONER 40 X 90	1

FRONT SPROCKET ASSEMBLY



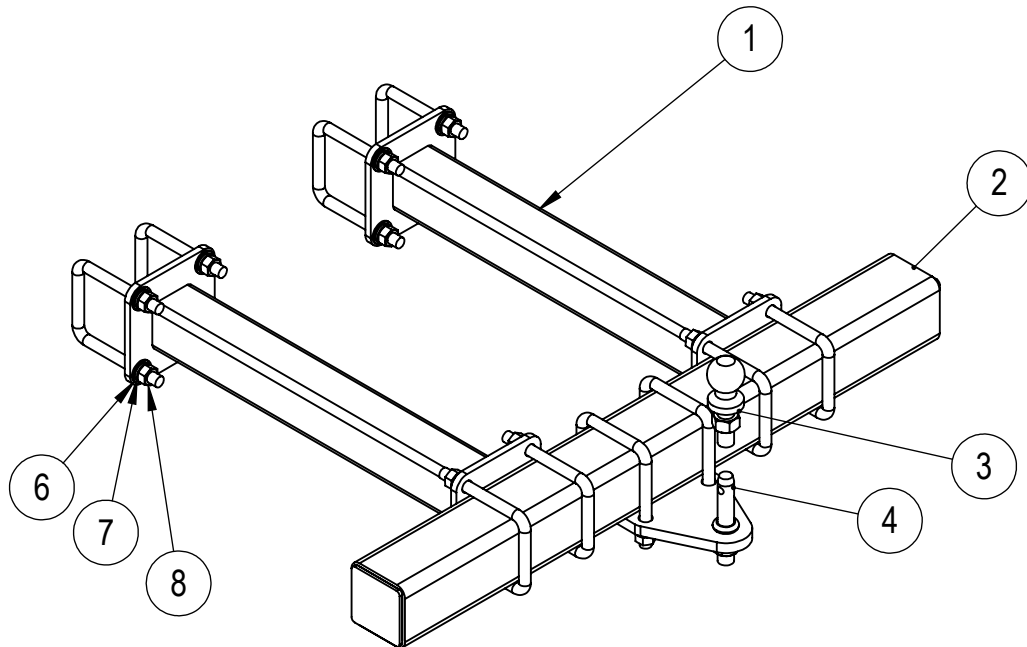
ITEM NO.	PART NUMBER	DESCRIPTION	QTY
1	0104011-01	BEARING HOUSING	1
2	0108023-05	SMALL SEED BOX BEARING	2
3	2402000-30-20	Simplex 30 -20 BORE	1
4	2402000-25-20	Simplex 25-20 BORE	1
5	2402000-14-20	Simplex 14-20 BORE	1
6	0107041-01	SHAFT	1
7	2024004601	M24 HEX NUT	1
8	1608128801	GRUB SCREW M8 x 12	3

REAR SPROCKET ASSEMBLY



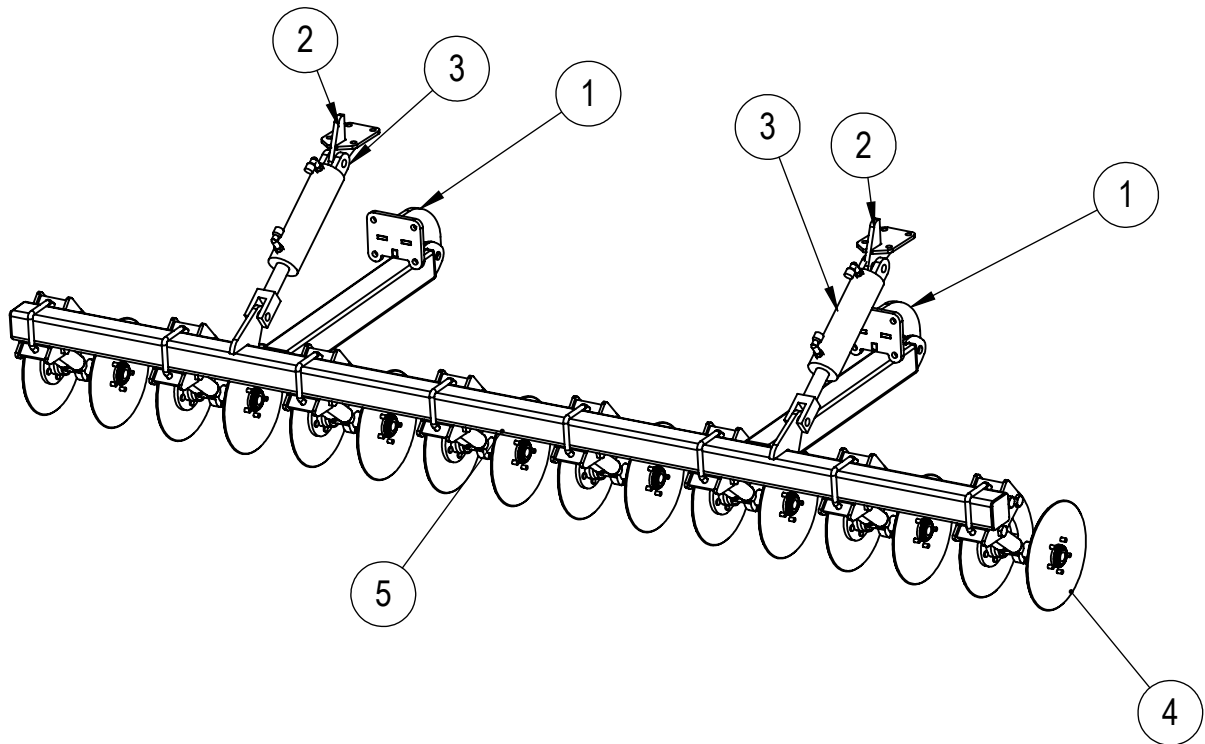
ITEM NO.	PART NUMBER	DESCRIPTION	QTY
1	2402000-25-20	Simplex 25-20 BORE	1
2	2402000-14-20	Simplex 14-20 BORE	1
3	240200-10-20	Simplex 10-20 BORE	1
4	0107041-02	SHAFT	1
5	0104011-01	BEARING HOUSING	1
6	0108023-05	SMALL SEED BOX BEARING	2
7	2024004601	M24 HEX NUT	1
8	0108032-03	SMALL SEED BOX CLUTCH	1
9	GSM-2023-10	ID20xOD23x10Lg	2
10	2509002-03	5mm R CLIP	1
11	8005060001	SPRING ROLL PIN DIA 5 x 36LG	1
12	1608128801	GRUB SCREW M8 x 12	3

TOW BAR



ITEM NO.	PART NUMBER	DESCRIPTION	QTY
1	0120105	TOW BAR EXTENSION	2
2	0120106	TOW BAR	1
3	2508005	50mm BALL	1
4	2508004	B200 PIN	1
5	1316202901	U BOLT M16 x 100 ZINC PLATED	10
6	3016004601	M16 FLAT WASHER ZINC PLATED	20
7	4016004601	M16 SPRING WASHER ZINC PLATED	20
8	2016004601	M16 HEX NUT ZINC PLATED	20

COULTER BAR ASSEMBLY

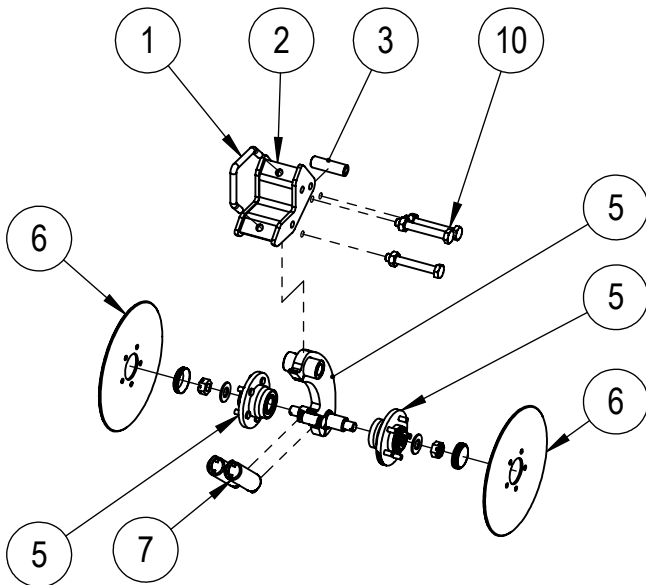


ITEM NO.	PART NUMBER	DESCRIPTION	QTY
1	0110030	COULTER BRACKET BOTTOM	2
2	0110035	COULTER CYLINDER LUG	2
3	2101013	DISC COULTER HYDRAULIC CYLINDER	2
4	0110023	DISC COULTER UNIT	8 - 14
5	0110037	DISC COULTER FRAME	1

DISC COULTER ASSEMBLY

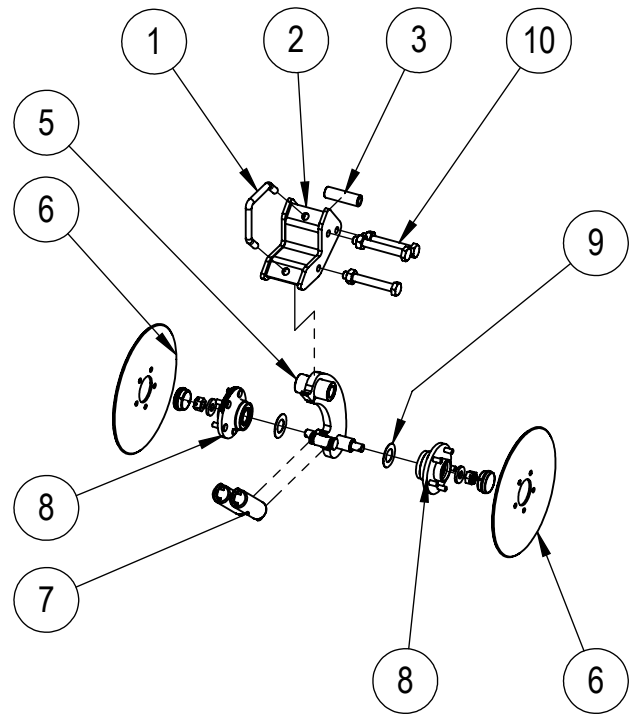
DEFAULT

- 150mm
- 175mm
- 225mm
- 250mm
- 300mm



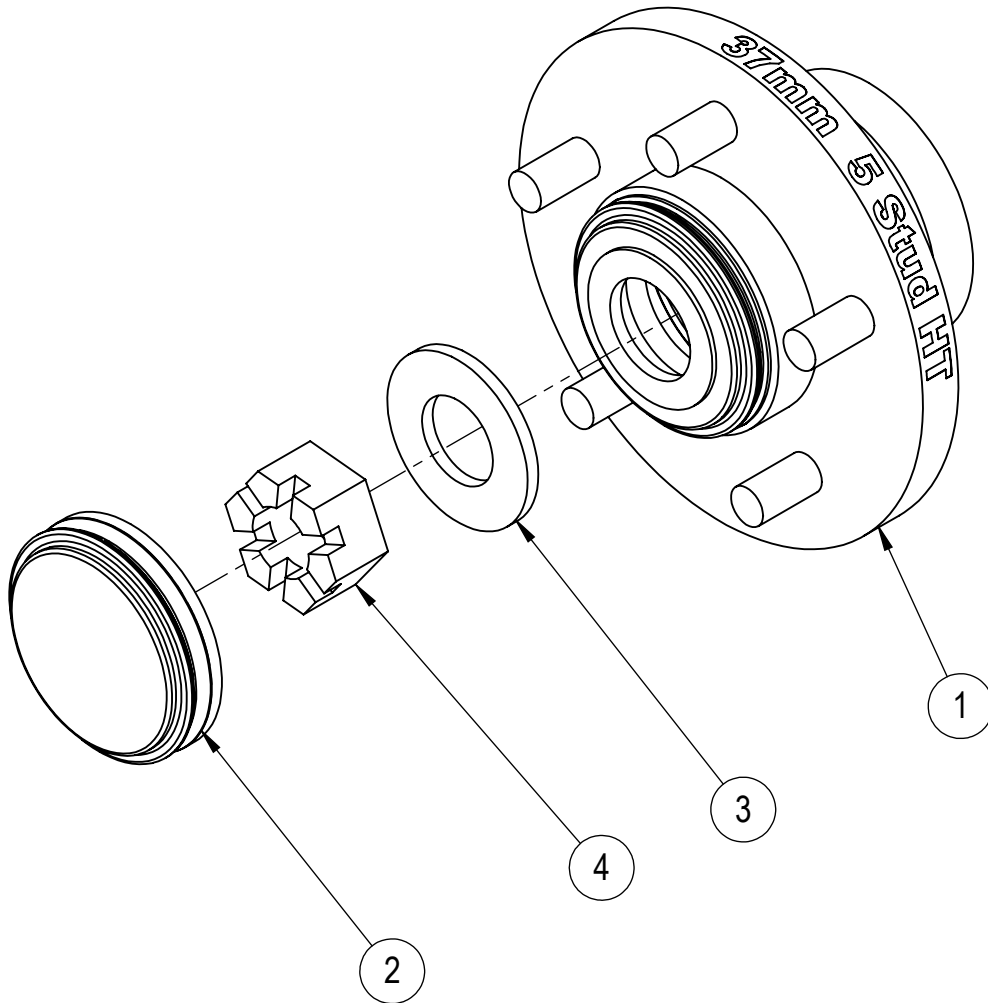
ALTERNATE

- 125mm



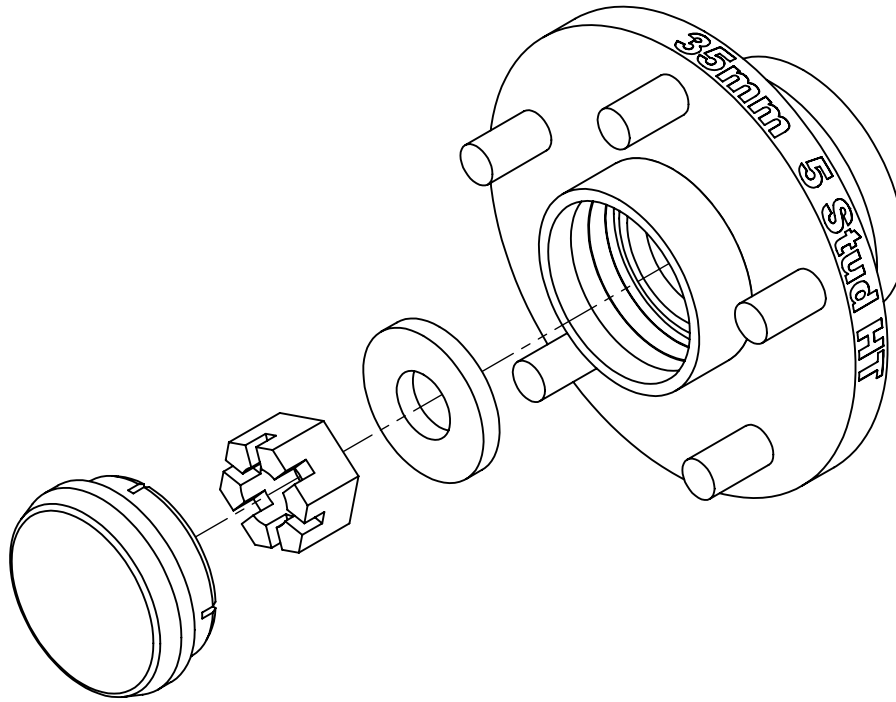
ITEM NO.	PART NUMBER	DESCRIPTION	150mm Pitch/Q TY.	175mm Pitch/Q TY.	250mm Pitch/Q TY.	225mm Pitch/Q TY.	125mm Pitch/Q TY.
1	1616322901	V-BOLT M16x157x144 ZINC PLATED	1	1	1	1	1
2	0110040	DISC COULTER MOUNT	1	1	1	1	1
3	0110024	COULTER BUSH	1	1	1	1	1
4	0110022	150mm COULTER ARM	1	-	-	-	-
4	0110022	175mm COULTER ARM	-	1	-	-	-
4	0110022	250mm COULTER ARM	-	-	1	-	-
4	0110022	225mm COULTER ARM	-	-	-	1	-
5	0110022	125mm COULTER ARM	-	-	-	-	1
5	2203002	37mm 5 STUD HUB	2	2	2	2	-
6	0110025	DISC 12", 14" or 16" DIA	2	2	2	2	2
7	0110007	DISC-TENSION SPRING	2	2	2	2	2
8	2203017	35mm, 5 STUD, HUB	-	-	-	-	2
9	0110023-03	SPACER	-	-	-	-	2
10	0110023-04	HARDWARE	3	3	3	3	3

37mm 5 STUD HUB



ITEM NO.	PART NUMBER	DESCRIPTION	QTY
1	2203002-01	37mm 5 STUD HUB	1
2	2203002-04	DUST CAP	1
3	2203002-07	WASHER	1
4	2203002-06	CASTLE NUT	1
5	2203002-02	26	1
6	2203002-03		1

35mm 5 STUD HUB



ITEM NO.	PART NUMBER	DESCRIPTION	QTY
1	2203017-01	35mm 5 STUD HUB	1
2	2203017-02	DUST COVER	1
3	2203017-03	WASHER	1
4	2203017-04	CASTEL NUT	1