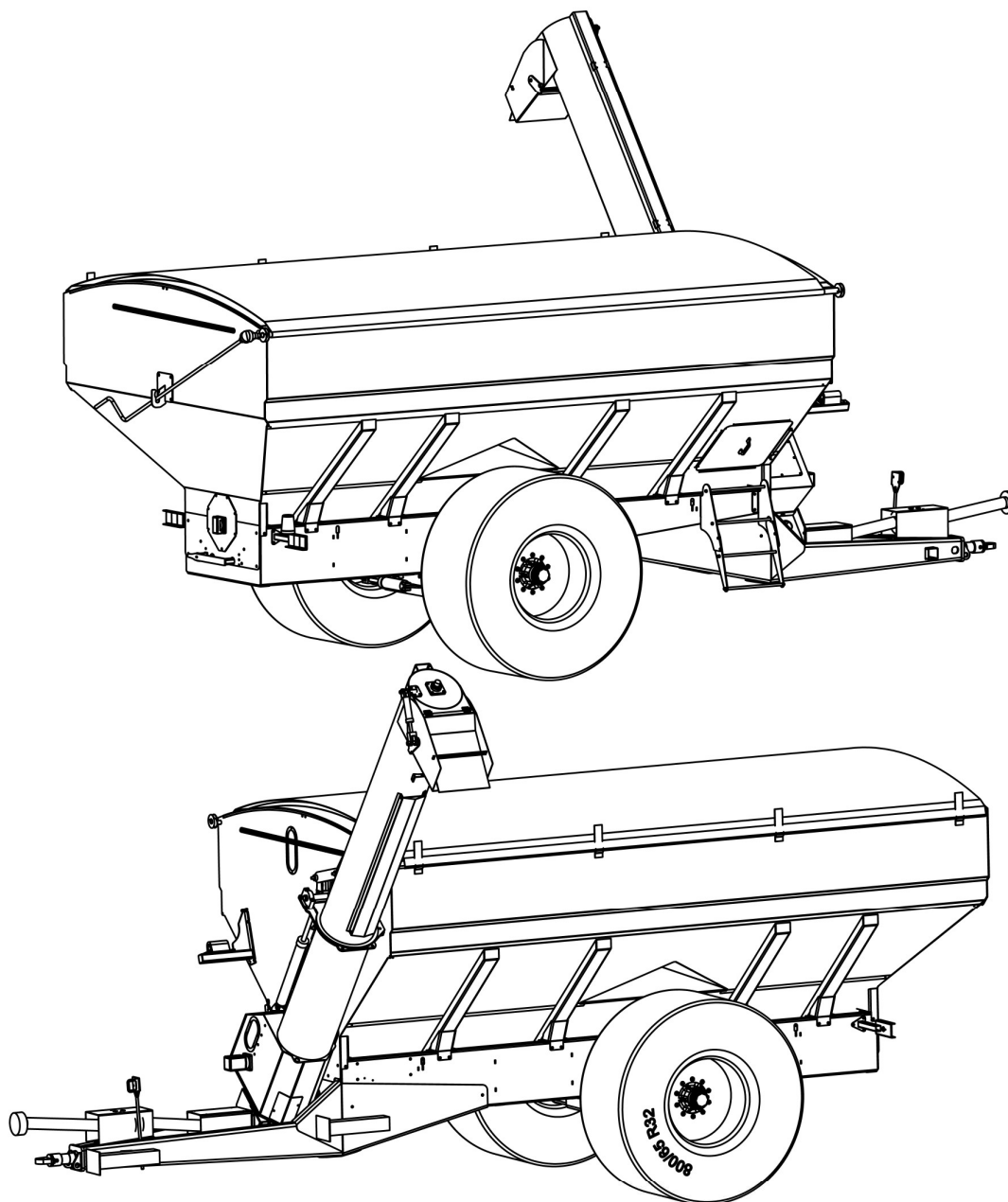


DAVIMAC CHASER BIN PARTS LIST

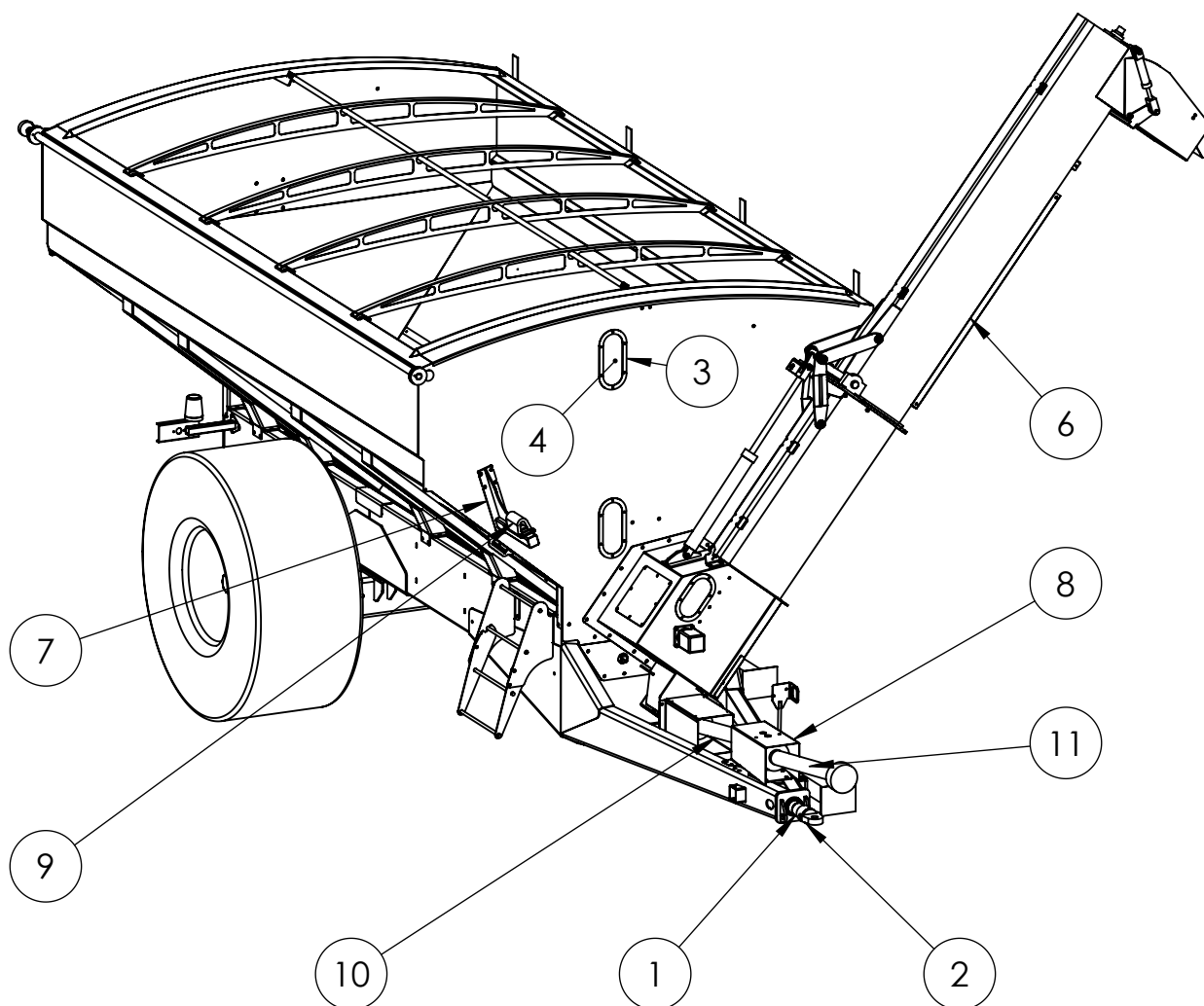


FROM: CB6613 TO CB10015

DAVIMAC
MANUFACTURING

DAVIMAC PTY LTD
55 WELLINGTON STREET
MOLONG NSW

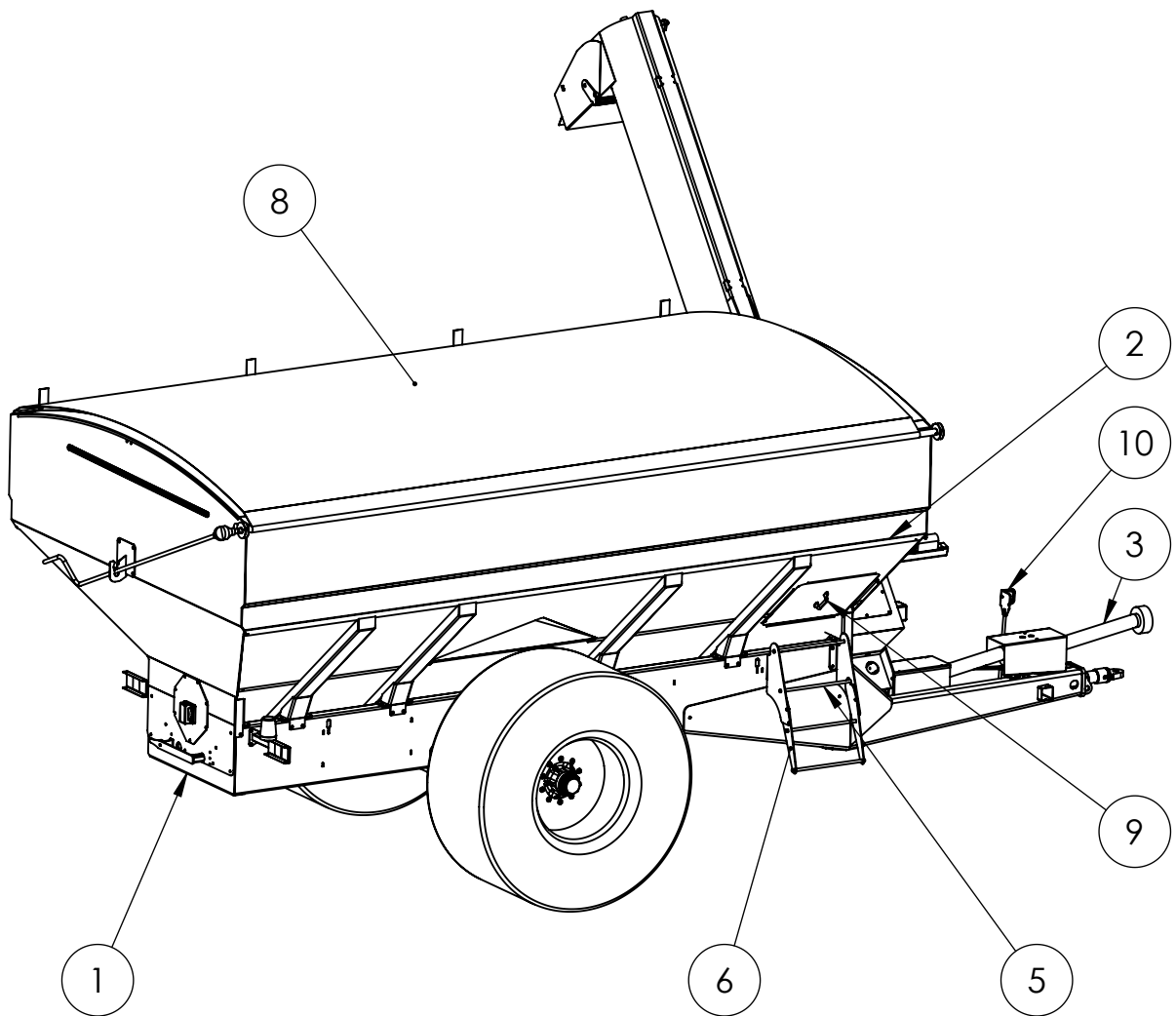
STANDARD CHASER BIN - FRONT



ITEM NO.	PART NUMBER		DESCRIPTION	QTY.	PAGE
1	0202009-01	25001	STANDARD TOW SWIVEL LOAD CELL TOW SWIVEL	1	-
2	0202009-06		TOW HITCH	1	-
3	0205011		WINDOW SURROUND	4	-
4	0205012		WINDOW	2	-
6	0207019-02		UPPER AUGER ASSEMBLY	1	3
7	0207009		AUGER CATCH BRACKET	1	-
8	0207017-02		PTO GUARD	1	8
9	0220014		AUGER CATCH RUBBER	1	-
10	0220022		REAR PTO SHAFT	1	-
11	0220033		JACK STAND - B9696	2	-

Issue:

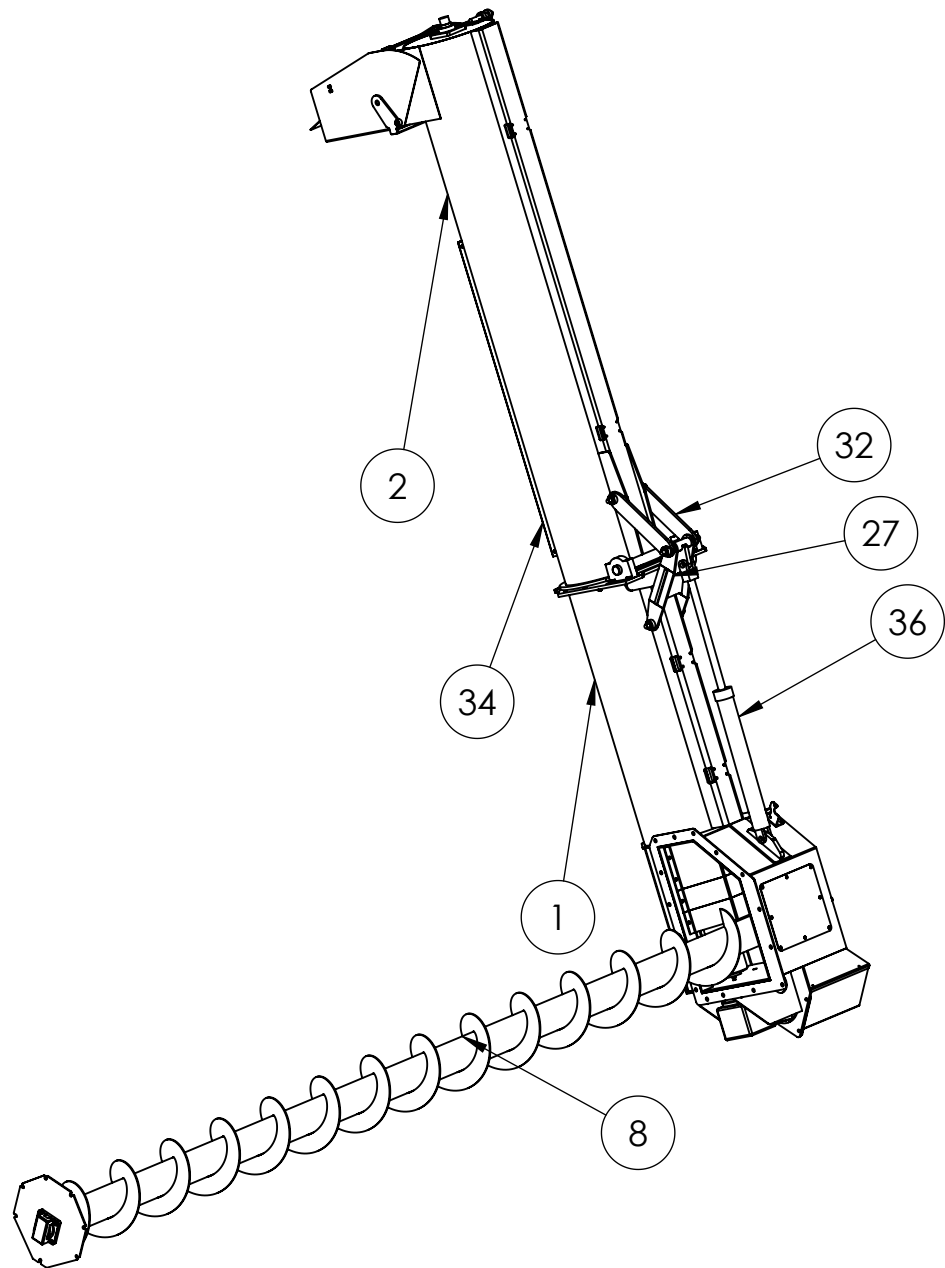
STANDARD CHASER BIN - REAR



ITEM NO.	PART NUMBER	DESCRIPTION	QTY.	PAGE
1	0202001	CHASSIS	1	-
2	0205001	BIN	1	-
3	0220031	FRONT PTO SHAFT	1	-
5	0220040	TOP LADDER	4	-
6	0220041-01	BOTTOM LADDER	2	-
8	-	TARP ASSEMBLY	4	10
9	0220038	MAN HOLE	1	
10	0220034-01	POGO	2	

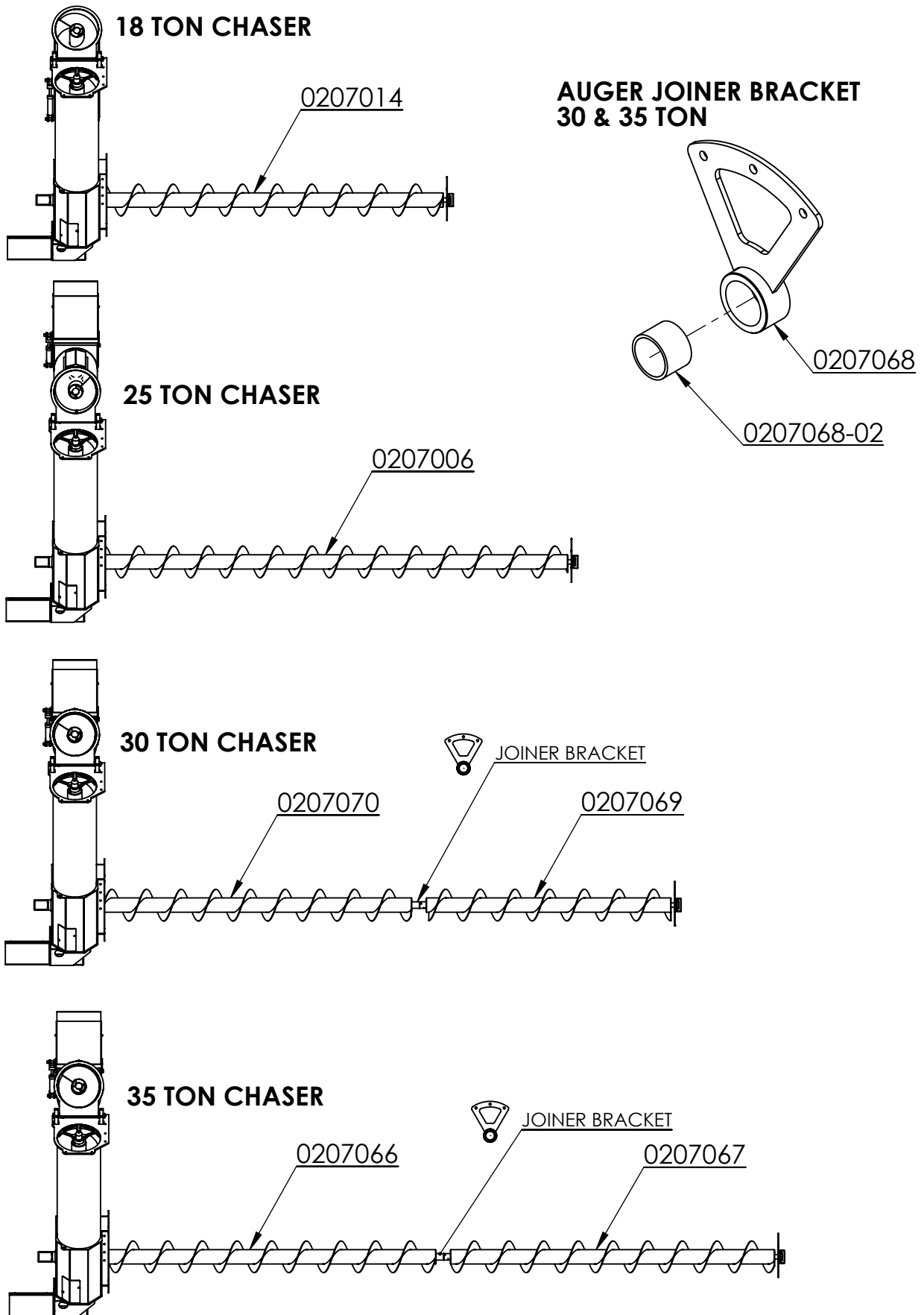
Issue:

AUGER ASSEMBLY

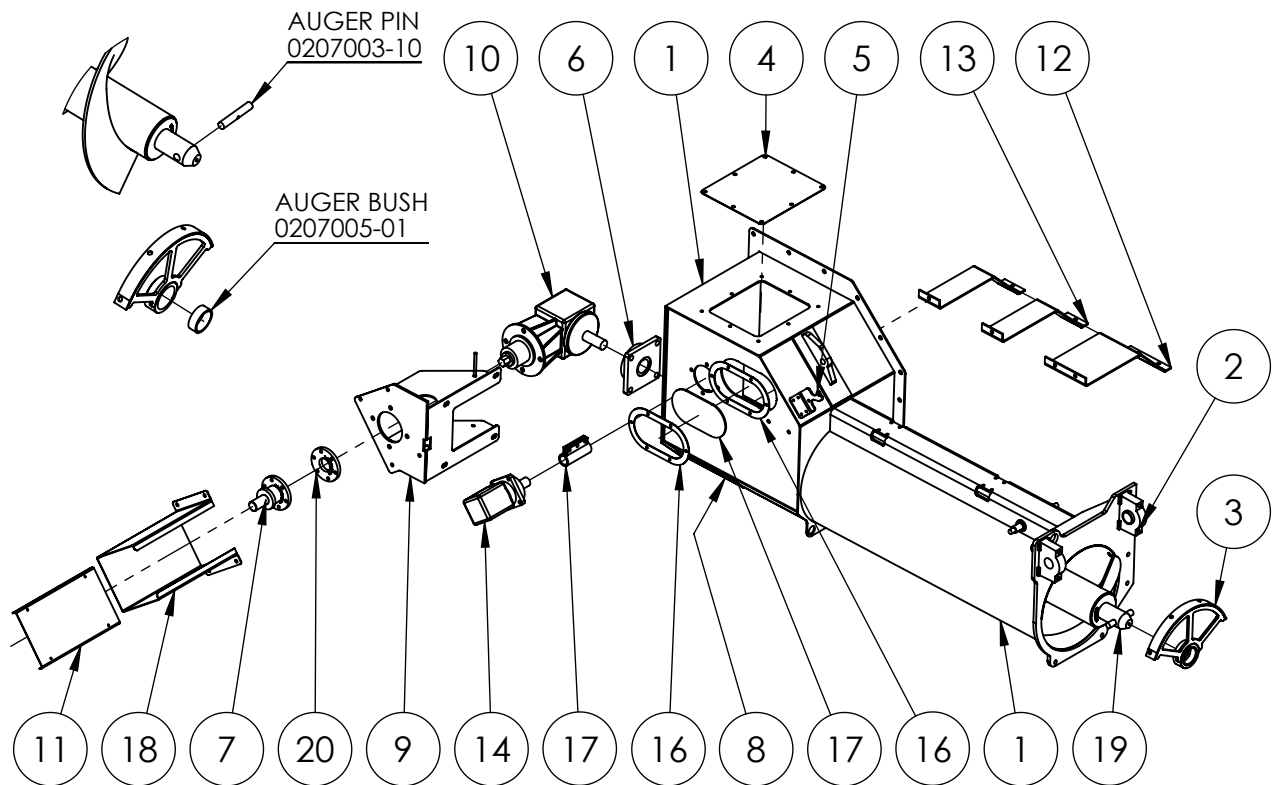


ITEM NO.	PART NUMBER	DESCRIPTION	Auger Up/QTY.
1	0207001	LOWER AUGER BODY	1
2	0207019	UPPER AUGER BODY	1
8	0207006	AUGER	1
27	0207074	LOWER LINKAGE	1
32	0207075	UPPER LINKAGE	2
34	0207071-01	AUGER GUARD	1
36	2101003 3x24	HYDRAULIC CYLINDER	1

CROSS AUGER OPTIONS

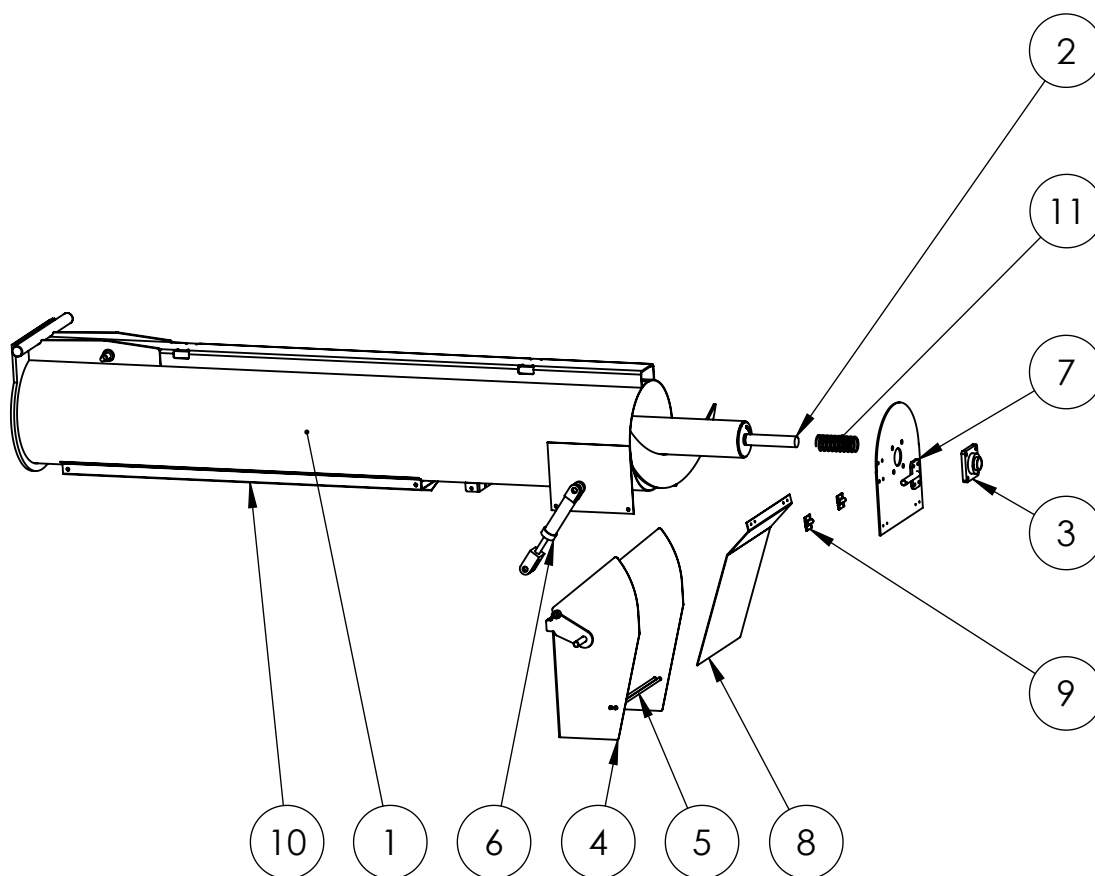


LOWER AUGER ASSEMBLY



ITEM NO.	PART NUMBER	DESCRIPTION	Lower Auger/QTY.
1	0207001	LOWER AUGER BODY	1
2	2602001		2
3	0207005		1
4	0207002-10		1
5	0220004		1
6	2601009	UCF 313	1
7	0207015		1
8	0207024-01		1
9	0207008		1
10	2410001		1
11	0207046		1
12	0207048		1
13	0207049		2
14	2102002	HYDRAULIC MOTOR - HT 315	1
17	0207007		1
16	0207058		2
17	0207059-Window Template		1
18	0207045		1
19	0207003		1
20	0207015-01		1

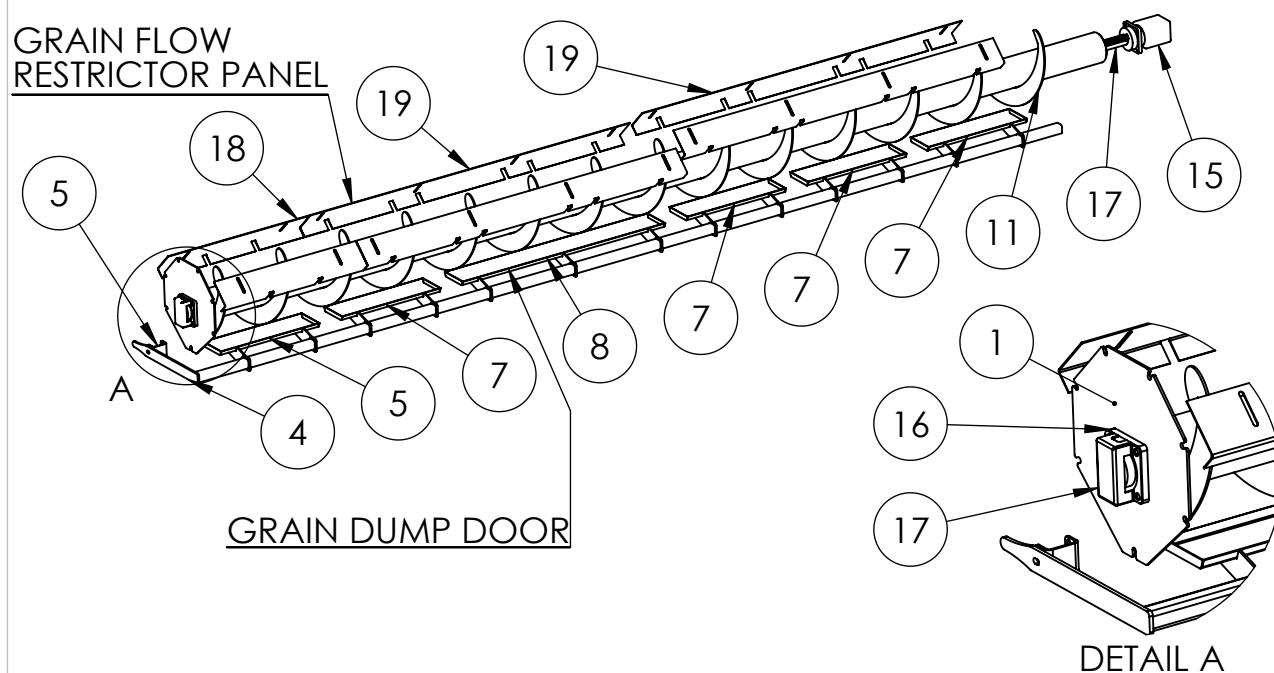
UPPER AUGER ASSEMBLY



ITEM NO.	PART NUMBER	DESCRIPTION	Upper Auger/QTY.
1	0207019	UPPER AUGER BODY	1
2	0207076	UPPER AUGER	1
3	2601002	BEARING – UCF210	1
4	0220008	SPOUT	1
5	0220008-08	BAR	2
6	2101002	UPPER AUGER CYLINDER	1
7	0220007	UPPER CYLINDER LUG	1
8	0220008-03	DEFLECTOR	1
9	2501001	HINGE – BUTT	2
10	0207071-01	AUGER GUARD	1
11	0207019-08	UPPER AUGER SPRING	1

Issue:

25T CROSS AUGER ASSEMBLY

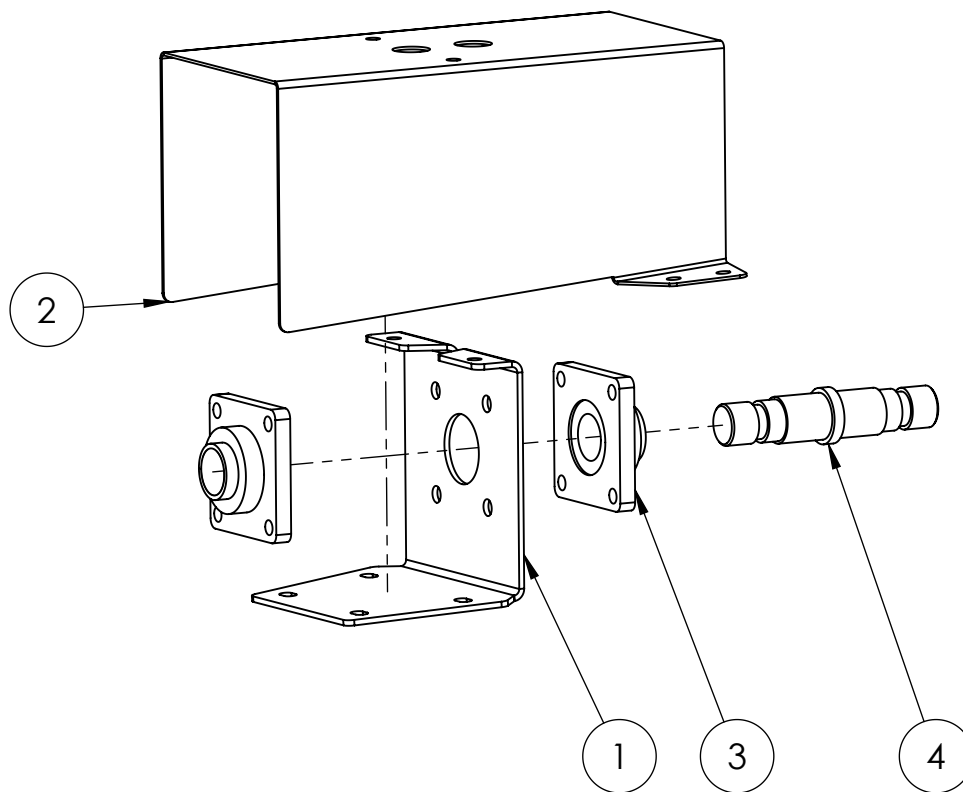


ITEM NO.	PART NUMBER	DESCRIPTION	QTY.
1	0205007	END PLATE	1
4	0205023-02	DUMP DOOR HANDLE	1
5	0205023-03	DUMP DOOR BRACKET	1
7	0205027	DUMP DOOR 25T FRONT GATE	5
8	0205028	DUMP DOOR 25T CENTRE GATE	1
11	0207006-04	AUGER THREAD	1
13	0207050	BEARING CAP	1
14	2601002	BEARING – UCF210	1
15	2102002	HYDRAULIC MOTOR - HT 315	1
17	0207007-01	COUPLING	1
18	0205030-LH	25T FRONT RESTRICTOR PLATE	2
19	0205030-LH	25T REAR RESTRICTOR PLATE	4

TABLE OF GRAIN RESTRICTOR PLATES AND DUMP DOORS

FRONT OF CHASER BIN							
18 TON		25 TON		30 TON		35 TON	
GRAIN RESTRICTOR PLATES	GRAIN DUMP DOORS	GRAIN RESTRICTOR PLATES	GRAIN DUMP DOORS	GRAIN RESTRICTOR PLATES	GRAIN DUMP DOORS	GRAIN RESTRICTOR PLATES	GRAIN DUMP DOORS
0205055-07	0205022	0205055-02	0205027	0205055-04	0205042	0205055-01	0205042
0205055-07	0205022	0205055-02	0205027	0205055-05	0205042	0205055-08	0205042
0205055-07	0205024	0205055-02	0205027	0205055-06	0205042	0205055-08	0205042
	0205025		0205028	0205055-04	0205042	0205055-09	0205042
			0205027		0205042		0205042
			0205027		0205047		0205042
							0205042
							0205043
BACK OF CHASER BIN							

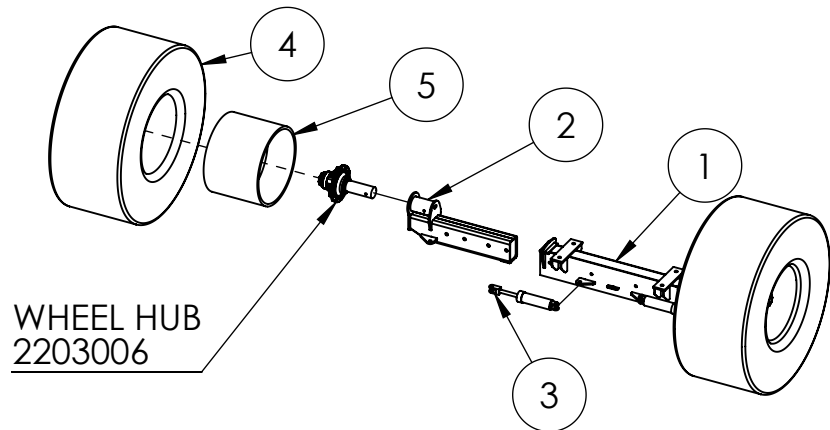
PTO COUPLING ASSEMBLY



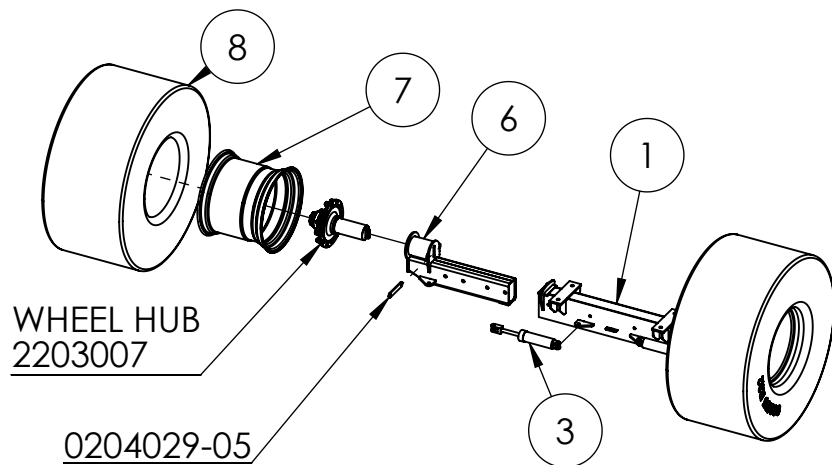
ITEM NO.	PART NUMBER	DESCRIPTION	QTY.
1	0207017-01	PTO HOUSING	1
2	0207017-02	PTO GUARD	1
3	2601002	BEARING – UCF210	2
4	0207018	PTO SHAFT	1

AXLE OPTIONS

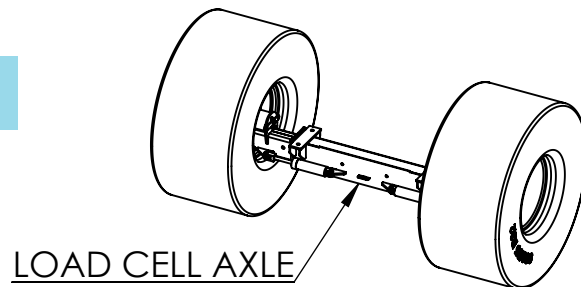
18 & 25 Ton



30 Ton



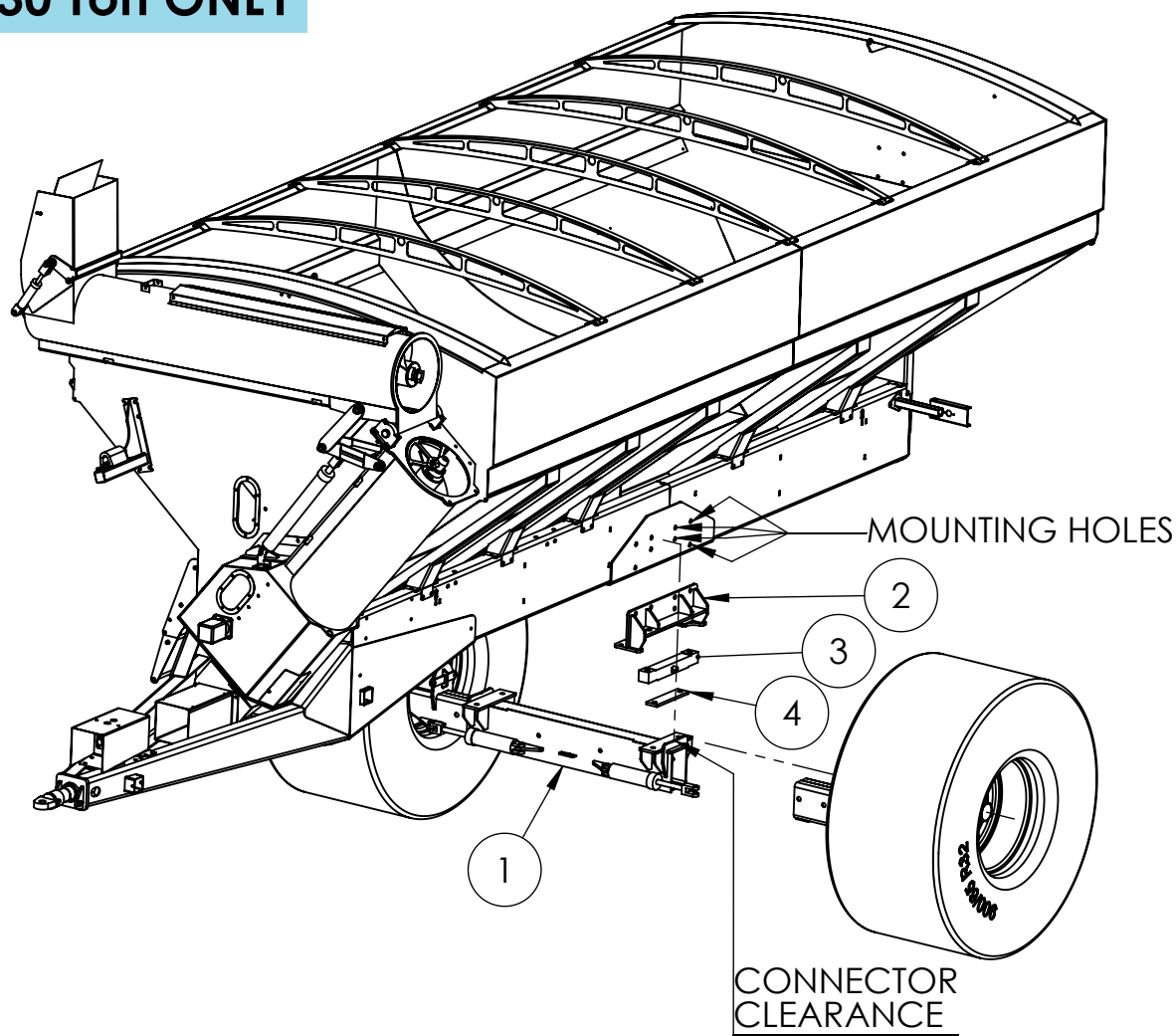
30 Ton with LOAD CELL



ITEM NO.	PART NUMBER	DESCRIPTION	18 & 25 /QTY.	30 Ton /QTY.	30 Ton Load Cell/QTY.
1	0204027	AXLE CENTRE	1	1	-
1	0204027	AXLE CENTRE-LOAD CELL	-	-	1
2	0204026	AXLE - 18 & 25 Ton	2	-	-
3	2101006 3.25x8	HYDRAULIC	2	2	2
4	2202009-800mm	TYRE	2	-	-
5	2201002-32R	RIM	2	-	-
6	0204029	AXLE - 30 TON	-	2	2
7	2201007	RIM	-	2	2
8	2202004_900mm	900mm TYRE	-	2	2

LOAD CELL ASSEMBLY

30 Ton ONLY



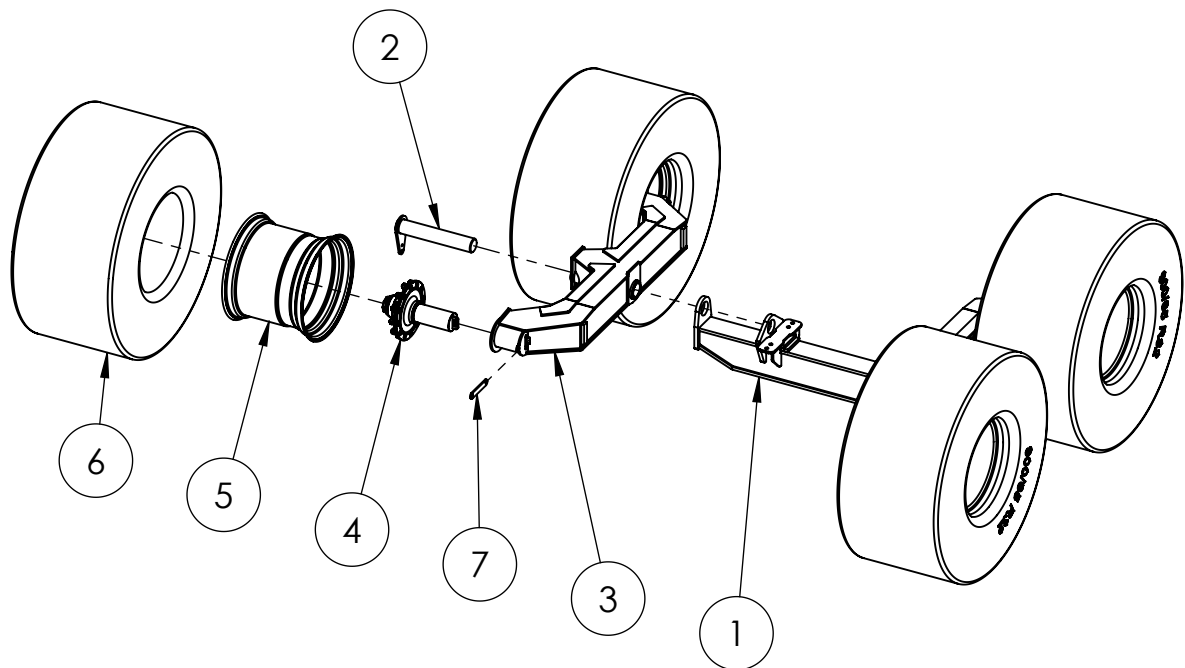
NOTE:
 THE 30 TON CHASER BIN WITH LOAD CELLS HAS:

- MOUNTING HOLES IN THE CHASSIS
- CONNECTOR CLEARANCE ADDED TO THE AXLE ASSEMBLY

ITEM NO.	PART NUMBER	DESCRIPTION	QTY.
1	0204027	30 TON LOAD CELL AXLE JOINER	1
2	0204025	LOAD CELL MOUNT	4
3	0204025-04	LOAD CELL	2
4	0204025-07	LOAD CELL PAD	2

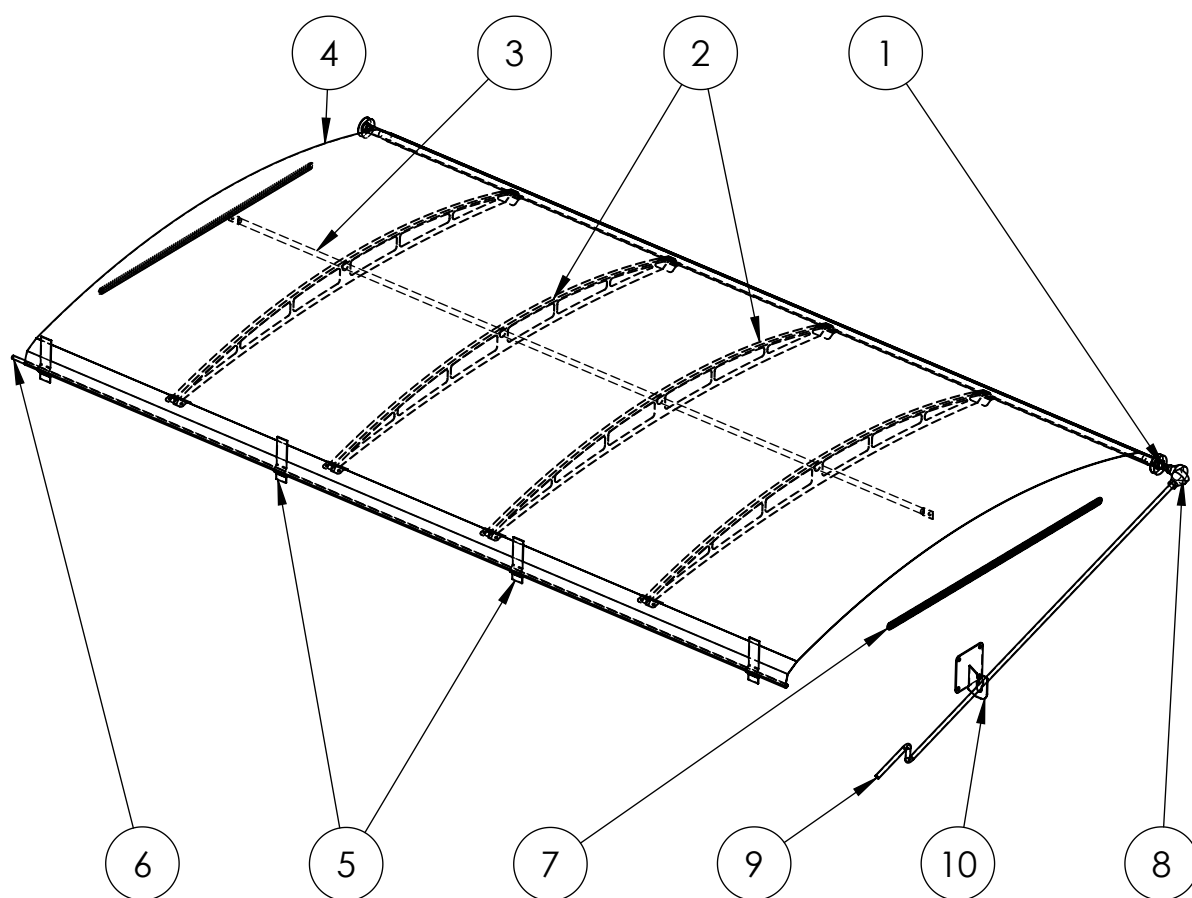
BOGIE AXLE

35 Ton ONLY



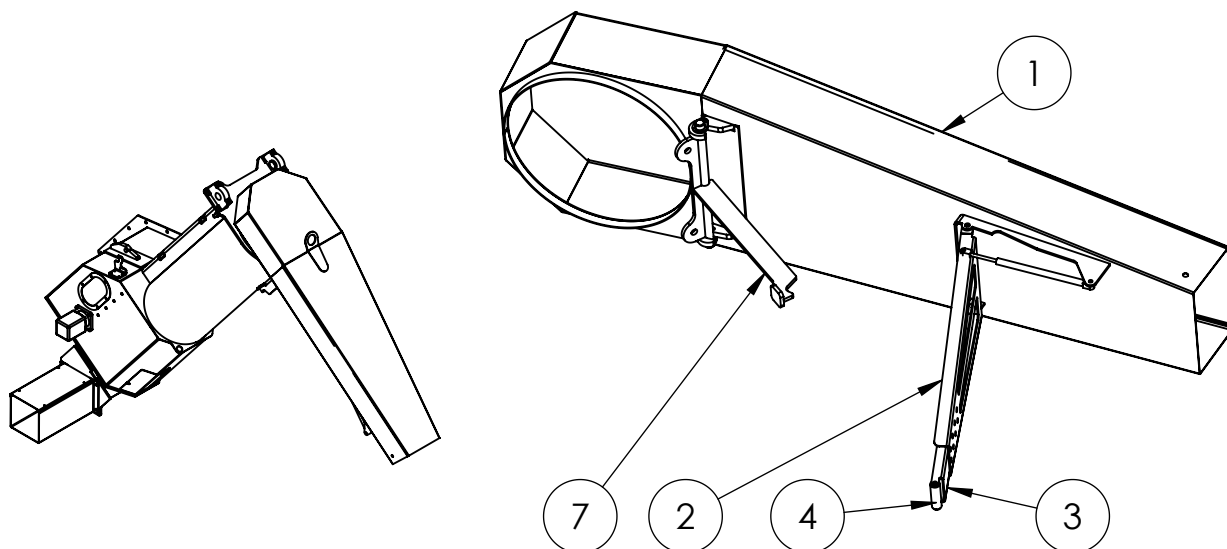
ITEM NO.	PART NUMBER	DESCRIPTION	QTY.
1	0204015	35 TON AXLE JOINER	1
2	0204017	35 TON BOGIE AXLE	2
3	0204016	35 TON BOGIE	2
4	2203007	WHEEL HUB	4
5	2201007	RIM	4
6	2202004_900mm	900mm TYRE	4
7	0204029-05	WHEEL HUB LOCK	4

TARP ASSEMBLY



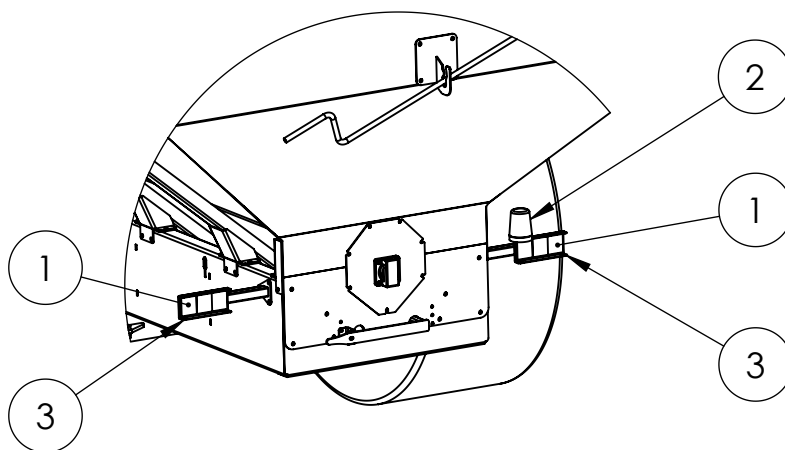
ITEM NO.	PART NUMBER	DESCRIPTION	Tarp Assembly/QTY.
1	0220019	TARP ROLL	1
2	0205008	TARP BRIDGE	4
3	0205009	TARP CENTRE ROD	1
4	0220030	TARP CANVAS	1
5	0205038	TARP CATCHER	4
6	0220027	TARP RETAINING ROD	1
7	0220024	TARP SPRING	2
8	0220026	UNIVERSAL JOINT	1
9	0220025	TARP HANDLE	1
10	0220023	TARP HANDLE HOOK	1

OPTIONAL HOPPER SPOUT



ITEM NO.	PART NUMBER	DESCRIPTION	QTY.
1	0220004	HOPPER SPOUT	1
2	0220011-01	OUTER STAY ARM	1
3	0220011-03	INNER STAY ARM	1
4	0220011-04	PLASTIC BUSH	1
7	0220002	SPOUT MOUNTING BRACKET	1

OPTIONAL TRANSPORT LIGHTING



ITEM NO.	PART NUMBER	DESCRIPTION	Standard/QTY.
1	23-001	REFLECTORS	2
2	23-002	REAR FLASHING TURRET	1
3	0220003	REAR REFLECTOR MOUNT	2