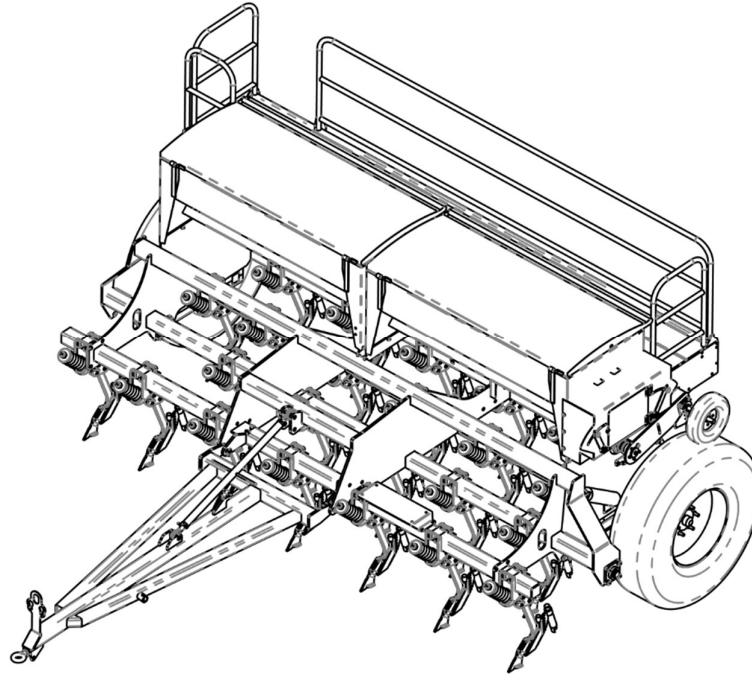
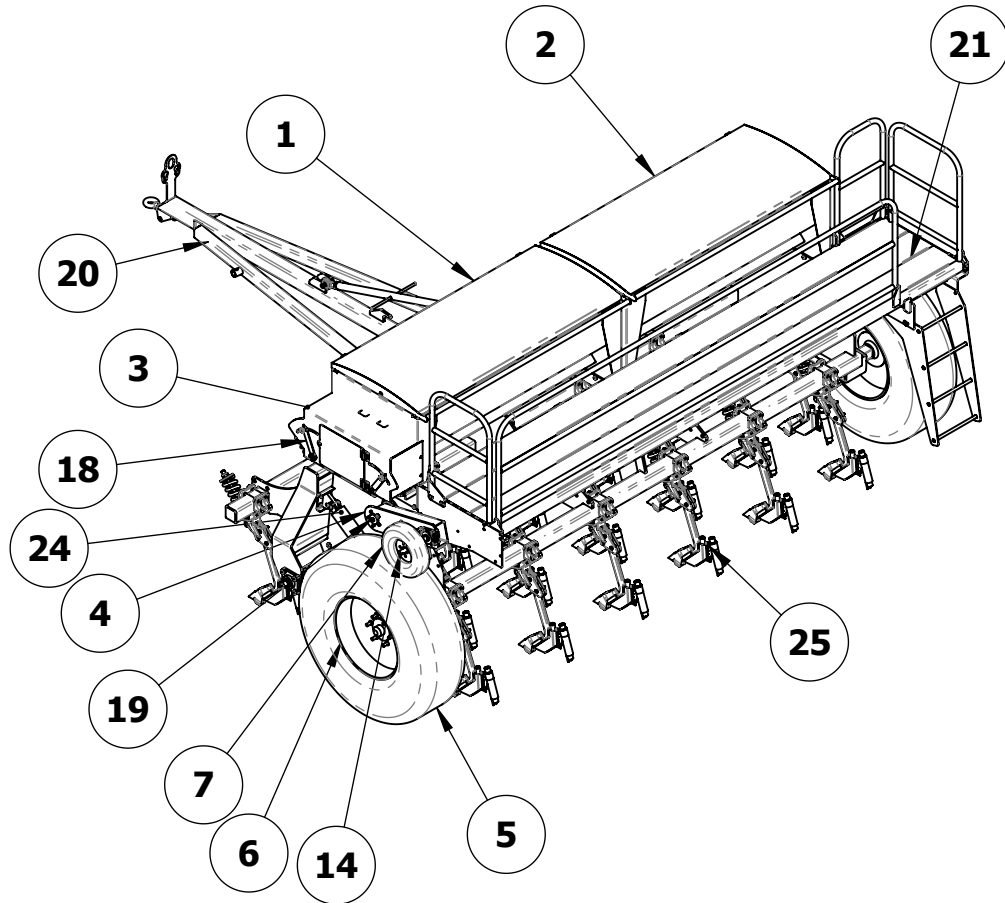


# DAVIMAC 'TD' SEED DRILL PARTS LIST



**FROM: TD 0110 TO TD 1814**

## TD SEED DRILL BASIC CONFIGURATION

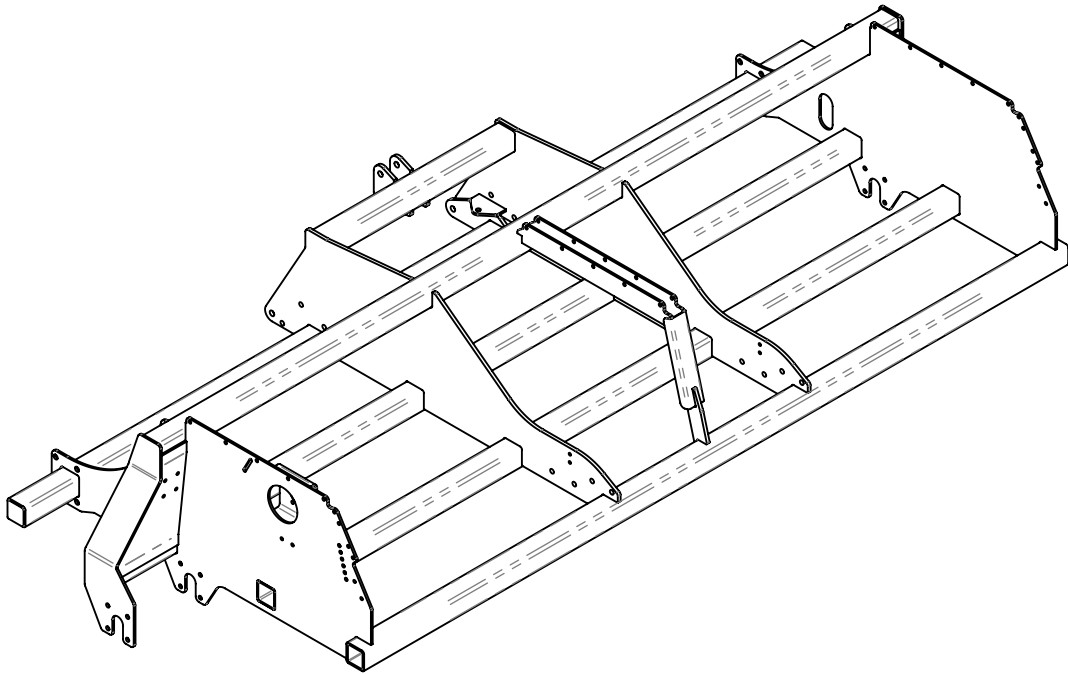


ITEM NO.	PART NUMBER	DESCRIPTION	SHEET	3850-24/QTY.
1	0105005	BOX SINGLE LID - DRIVE END	5	1
2	0105012	BOX SINGLE LID - PLAIN END	6	1
3	0107002	GEAR BOX GUARD	7	1
4	0107004	DRIVE ARM	9	1
5	2202005	TYRE - SIZE 380/85 R24	1	2
6	2201003	WHEEL HUB - 610 DIA x 300	1	2
7	2202002	TYRE - SIZE - 375 DIA x 100	1	1
14	0107014	SMALL WHEEL AXLE	12	1
18	Drive Kit	DRIVE KIT	10	1
19	0107006	DRIVE GEAR CLUSTER	11	1
20	FRAME	FRAME	2	1
21	PLATFORM	PLATFORM	13	1
22	0104001	AXLE TD DRILL RH	8	1
23	0104002	AXLE TD DRILL LH	8	1
24	2101001	CLINDER ASSY 3" x 10" STROKE LH-3.5" x 10" RH	1	1
25		TYNE OPTIONS	14	24

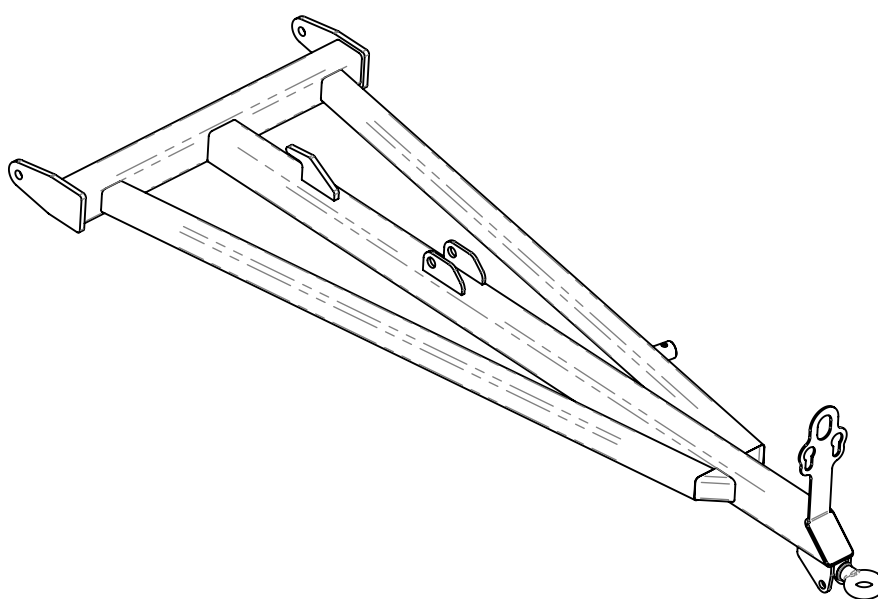
Issue:

1

**FRAME**  
**PART No. 0102001**

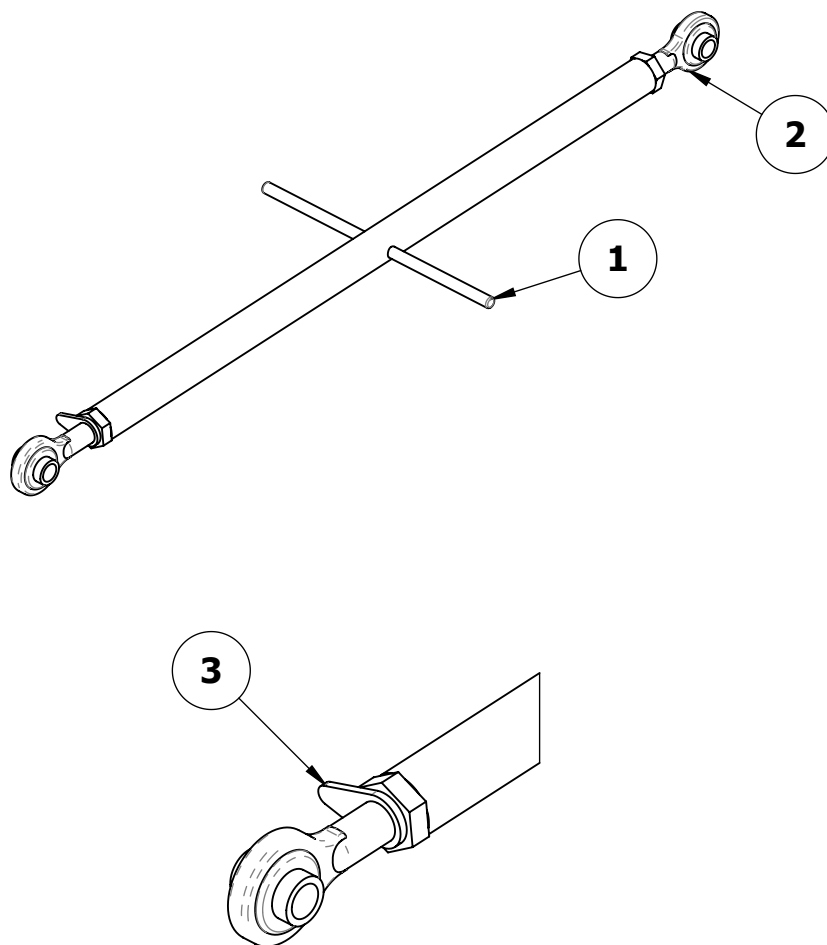


**HITCH - TD DRILL  
PART No. 0103001**



# HITCH LEVELLING BAR

## PART No. 0120070

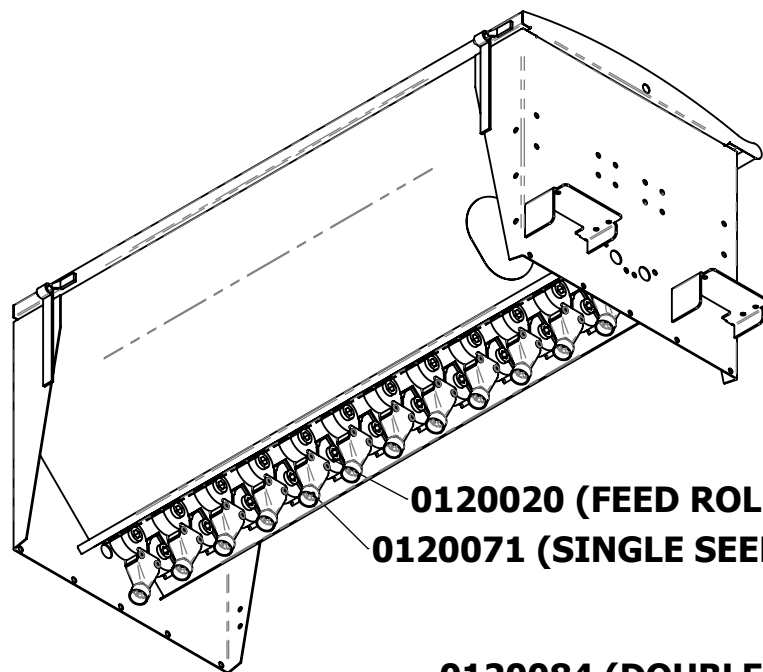
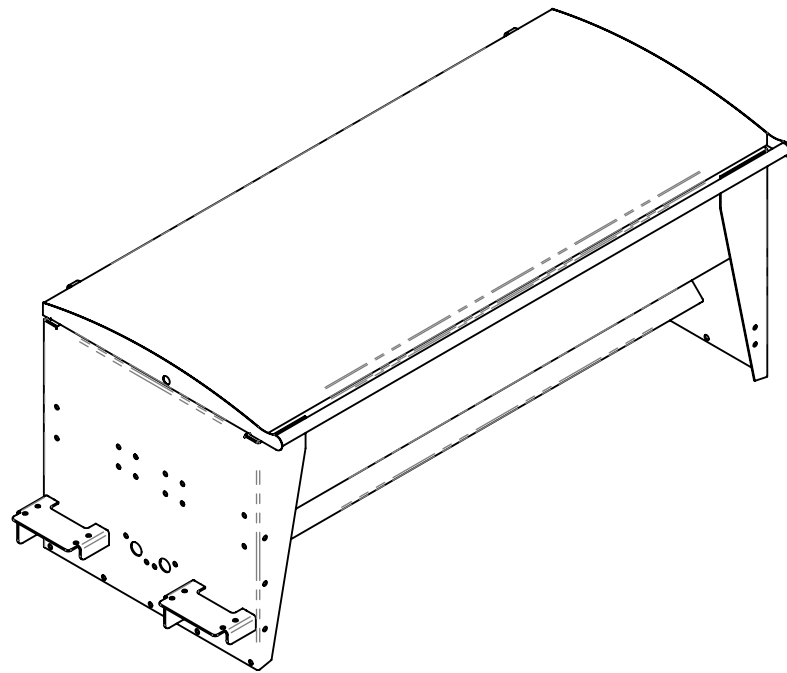


ITEM NO.	PART NUMBER	DESCRIPTION	QTY.
1	0120072	HITCH LEVELLING BAR-BODY	1
2	0120073	ROD END	2
3	0120074	LOCK WASHER	1

Issue:

4

**BOX SINGLE LID- DRIVE END  
PART No. 0105005**

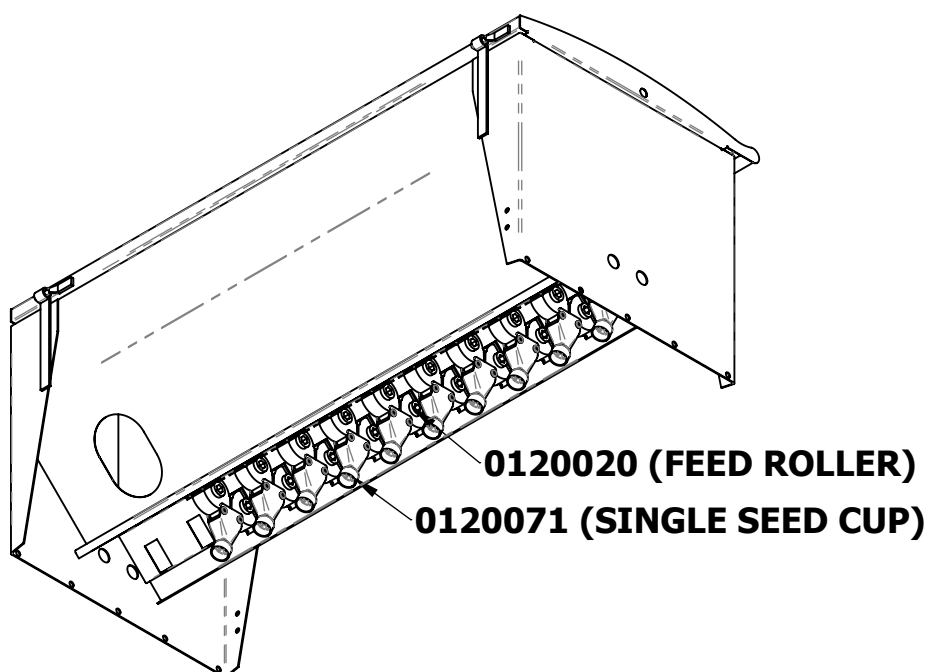
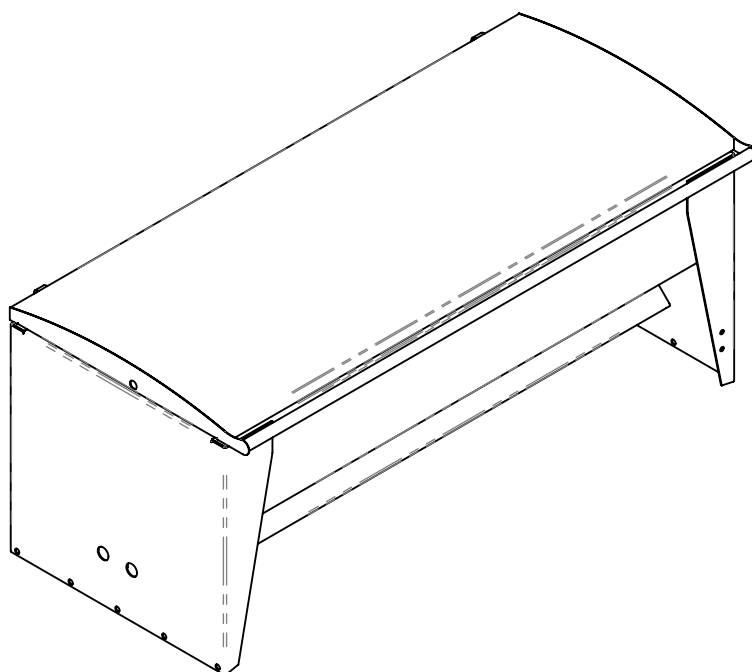


**0120020 (FEED ROLLER)  
0120071 (SINGLE SEED CUP)**



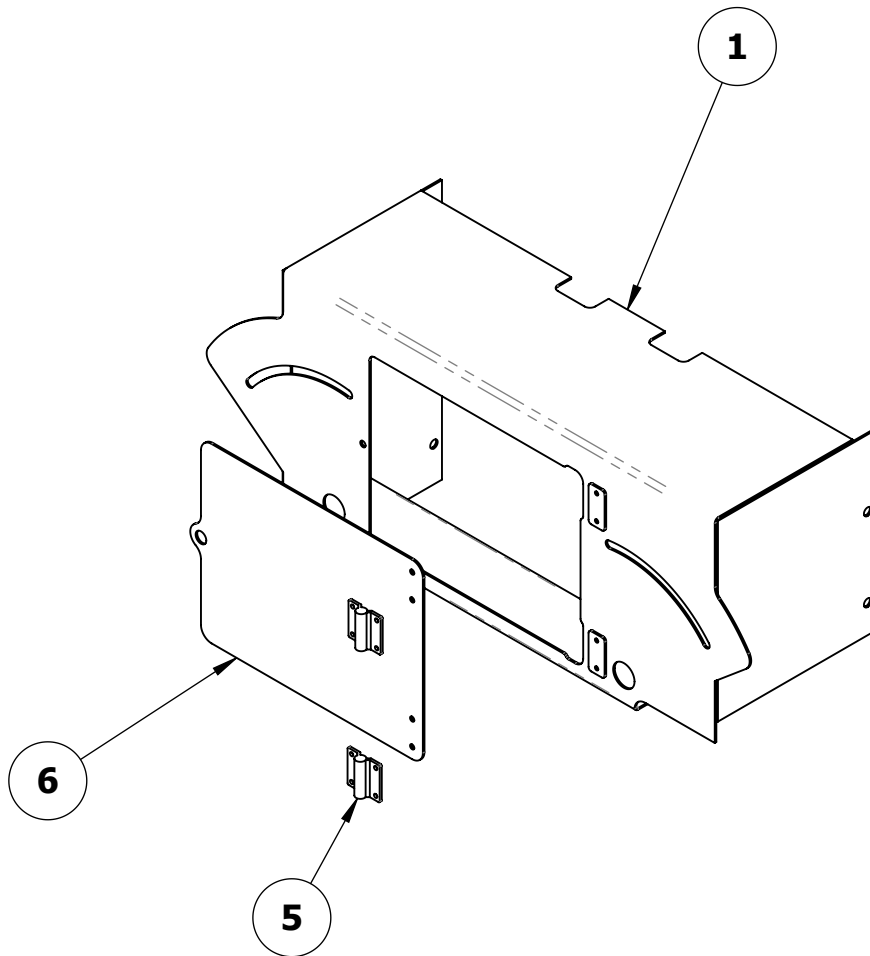
**0120084 (DOUBLE SEED CUP)  
AVAILABLE AS AN OPTION**

**BOX SINGLE LID- PLAIN END**  
**PART No. 0105012**



# GEARBOX GUARD

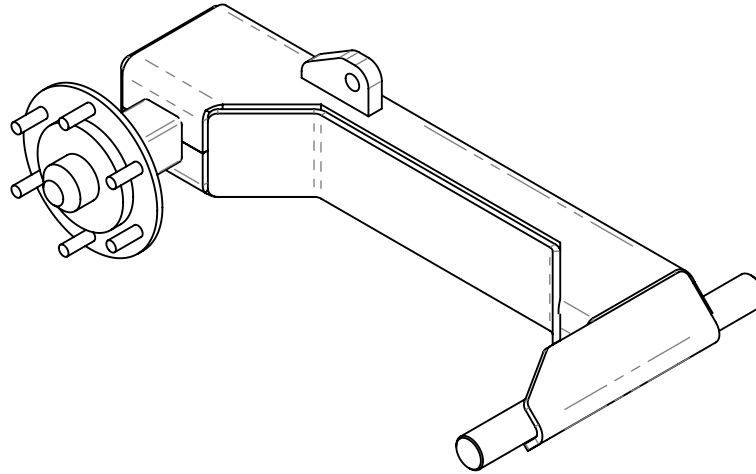
## PART No. 0107002



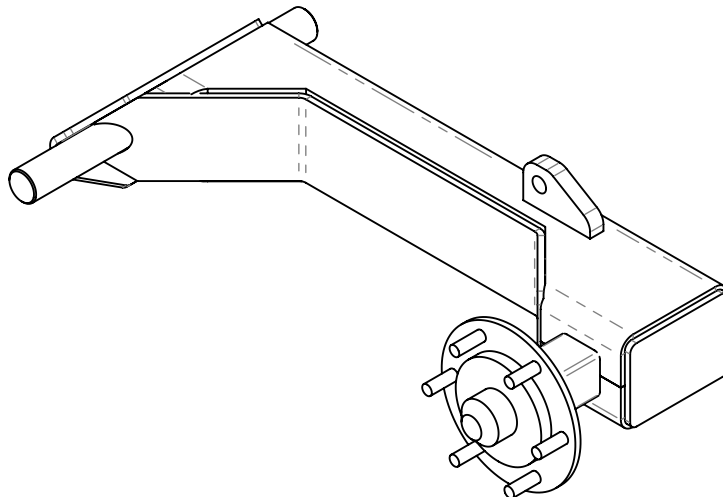
ITEM NO.	PART NUMBER	DESCRIPTION	QTY.
1	0107002-01	MAIN BODY	1
5	2501001	HINGE – BUTT	2
6	0107003	GEAR BOX GUARD DOOR	1

Issue:

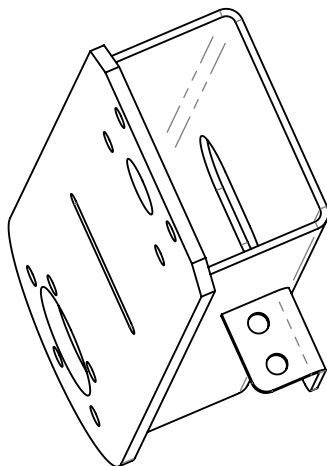
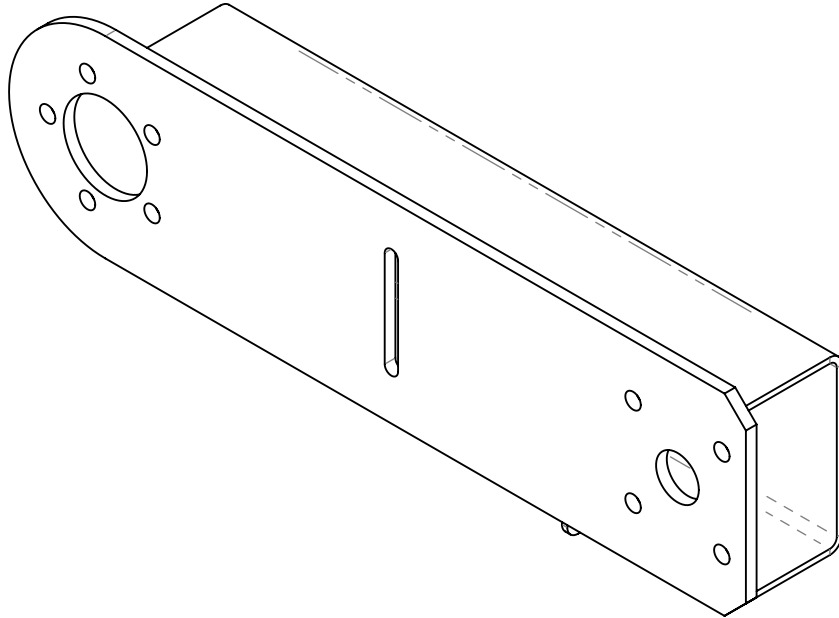
**AXLE TD DRILL-RH  
PART No. 0104001**



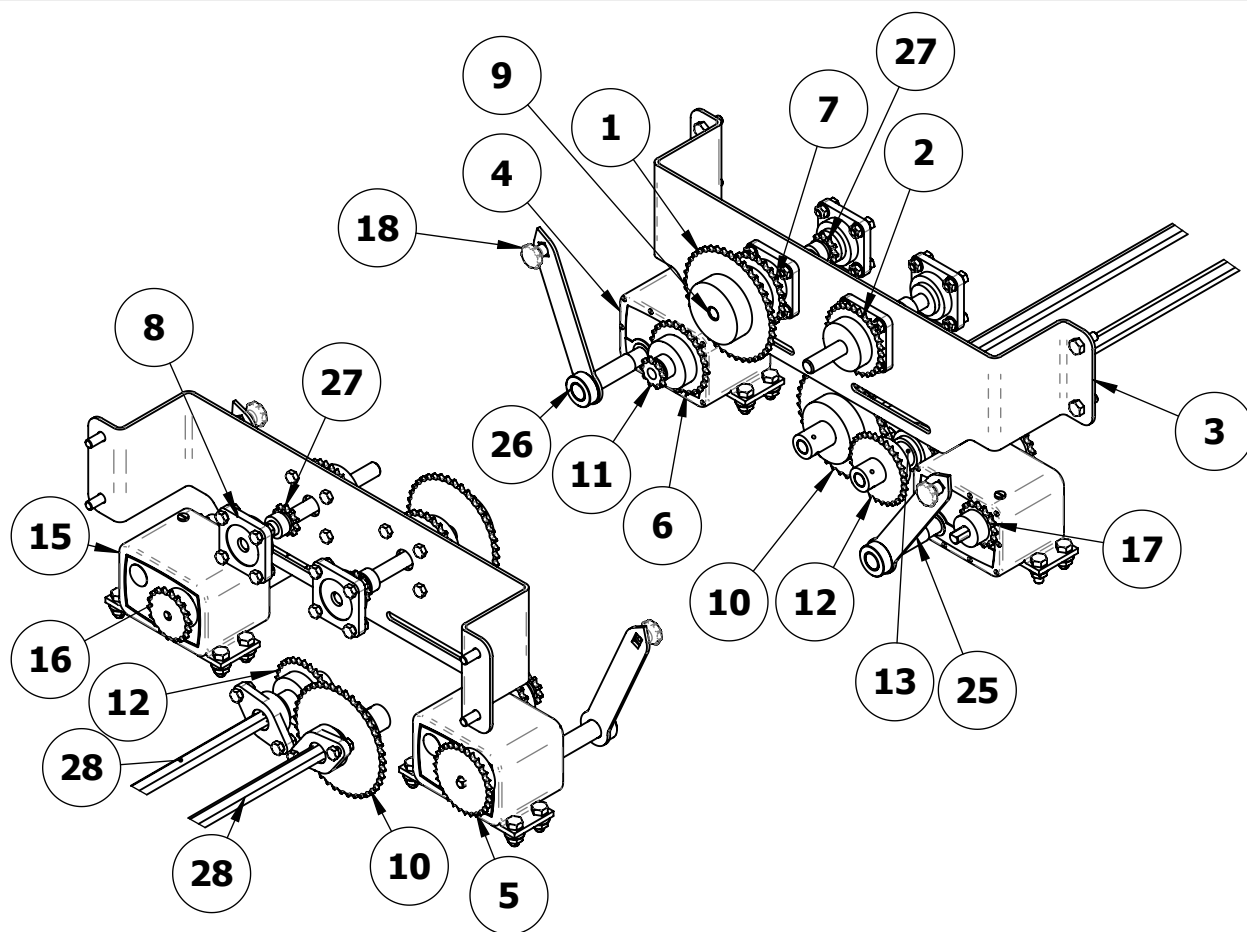
**AXLE TD DRILL-LH  
PART No. 0104002**



**DRIVE ARM**  
**PART No. 0107004**

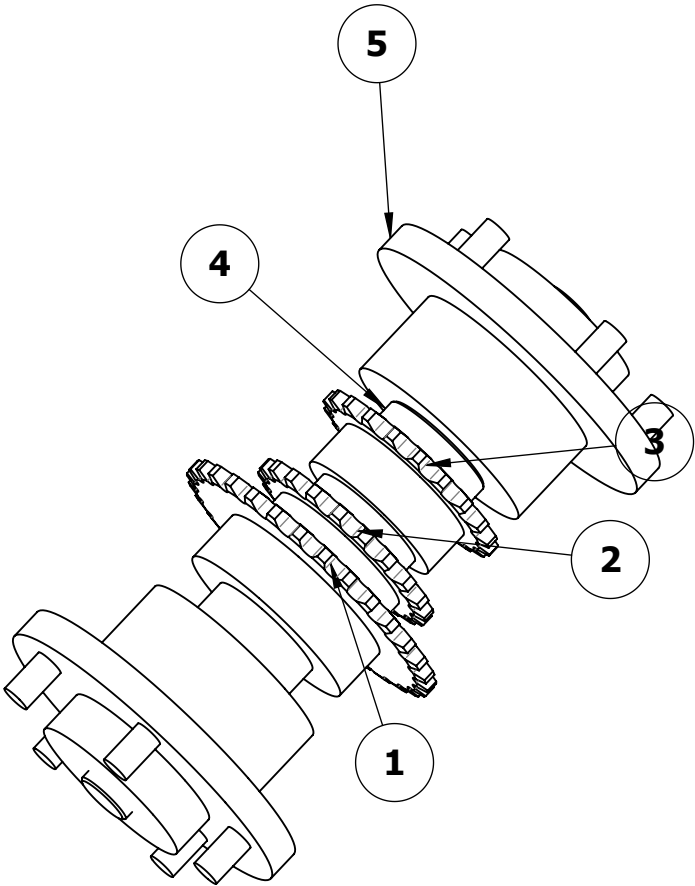


## DRIVE KIT



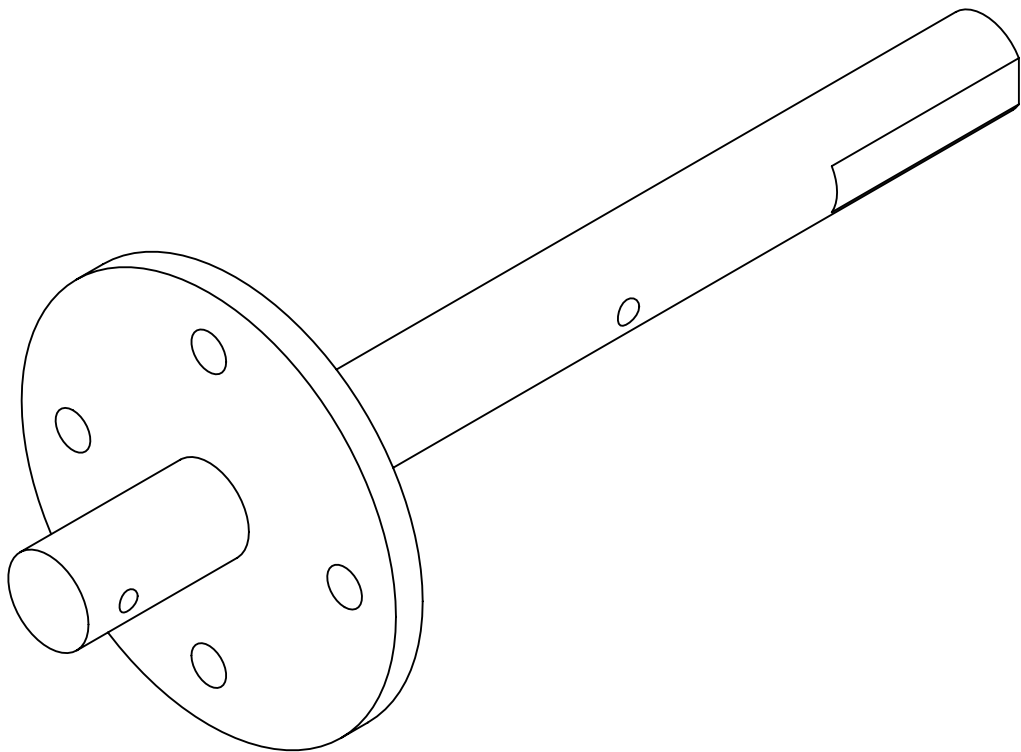
ITEM NO.	PART NUMBER	DESCRIPTION	QTY.
1	2402020	SPROCKET - 40T x 20 BORE	1
2	2402015	SPROCKET - 30T x 20 BORE	1
3	0107001	DRIVE SHAFT SUPPORT	1
4	2410002	ZERO MAX – Y1	1
5	2402014	SPROCKET - 30T x 1/2 BORE	1
6	2402013	SPROCKET - 25T x 5/8 BORE	1
7	2402012	SPROCKET - 25T x 20 BORE	1
8	2601006	BEARING FLANGED - UCF204	4
9	0107011	BOX IDLER SHAFT	2
10	2402021	SPROCKET - 40T x 35 BORE	1
11	2402002	SPROCKET - 10T x 5/8 BORE	1
12	2402017	SPROCKET - 30T x 35 BORE	1
13	0107010	CLUTCH BUSH	2
14	2601007	BEARING FLANGED - UCFL204	2
15	2410003	ZERO MAX – Y2	1
16	2402006	SPROCKET - 18T x 1/2 BORE	1
17	2402004	SPROCKET - 15T x 5/8 BORE	1
18	2507001	KNOB - BLACK SCREW	2
25	0107013	GEAR LEVER	2
26	0107013-01	GEAR LEVER ARM	2
27	2402022	SPROCKET - 10T x 5/8 BORE	2
28	0107015	BOX SHAFT HEX	2

**DRIVE GEAR CLUSTER**  
**PART No. 0107006**

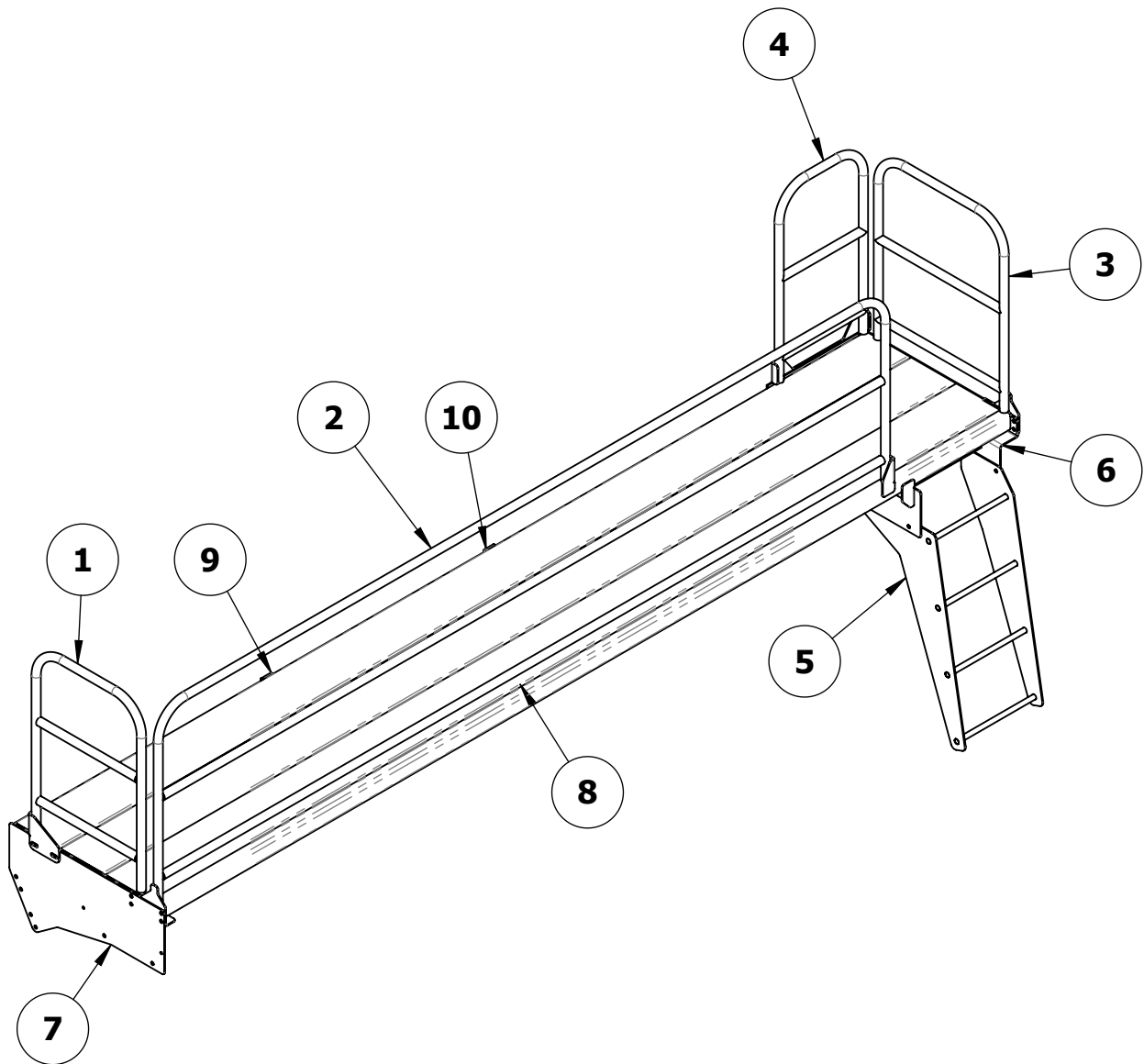


ITEM NO.	PART NUMBER	DESCRIPTION	QTY.
1	2402018	SPROCKET-30T x 50 BORE	1
2	2402009	SPROCKET-20T x 50 BORE x 13 BOSS	1
3	2402008	SPROCKET- 20T x 50 BORE x 21 BOSS	1
4	0107006	DRIVE SHAFT-PIVOT	1
5	2203002	PIVOT HUB	2

**SMALL DRIVE WHEEL AXLE  
PART No. 0107014**



## PLATFORM ASSEMBLY



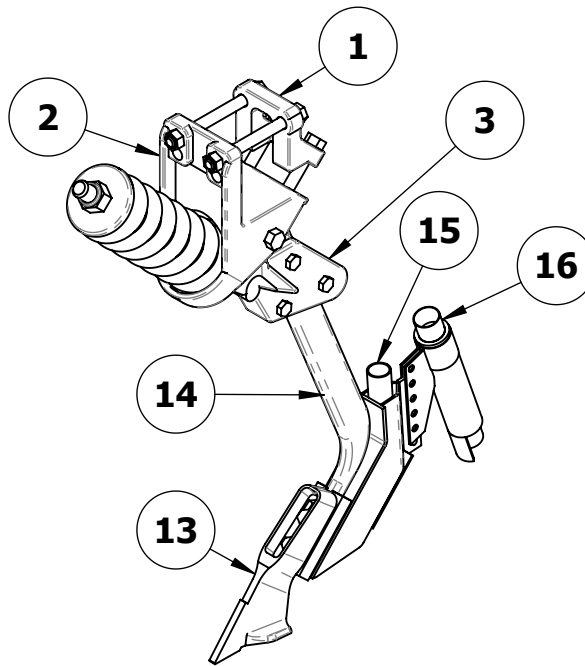
ITEM NO.	PART NUMBER	DESCRIPTION	QTY.
1	0106014	HANDRAIL LH – TD DRILL	1
2	0106004	HANDRAIL MAIN – TD DRILL	1
3	0106019	HANDRAIL RH END – TD DRILL	1
4	0106018	HANDRAIL RH – TD DRILL	1
5	0106001	STEPS – TD DRILL	1
6	0106002	STEP SUPPORT – RH - TD DRILL	1
7	0106003	STEP SUPPORT – LH - TD DRILL	1
8	0106006	PLATFORM DECK	3
9	0106005	PLATFORM CENTRE SUPPORT - LH	1
10	0106005-RH	PLATFORM CENTRE SUPPORT - RH	1

Issue:

13

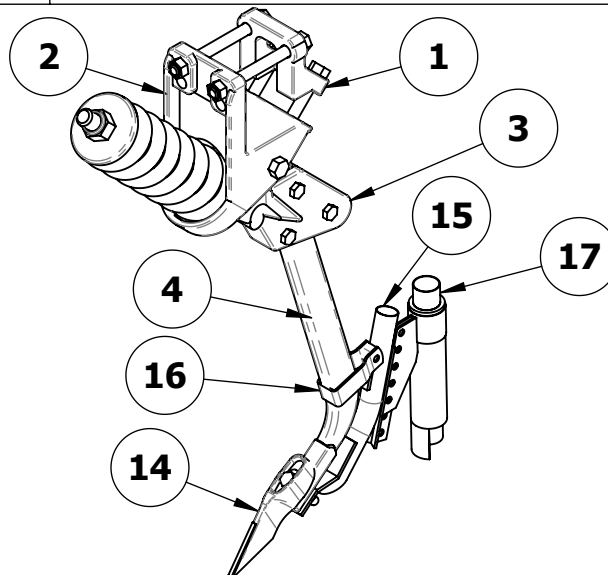
## TYNE OPTIONS

### TYNE DUAL BOLT



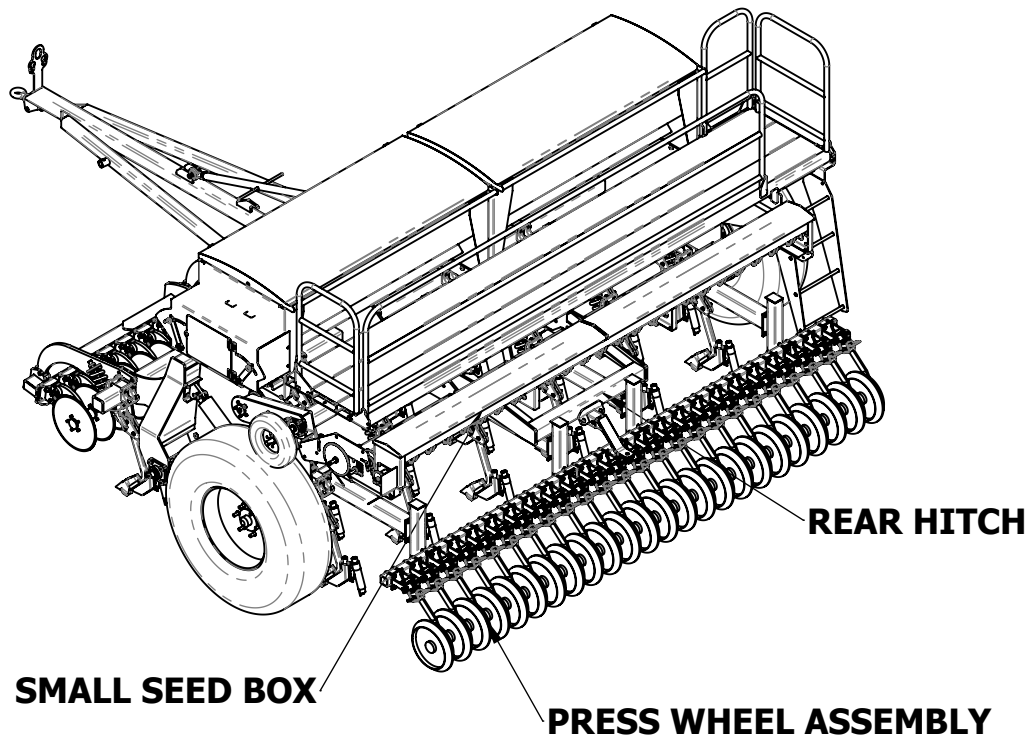
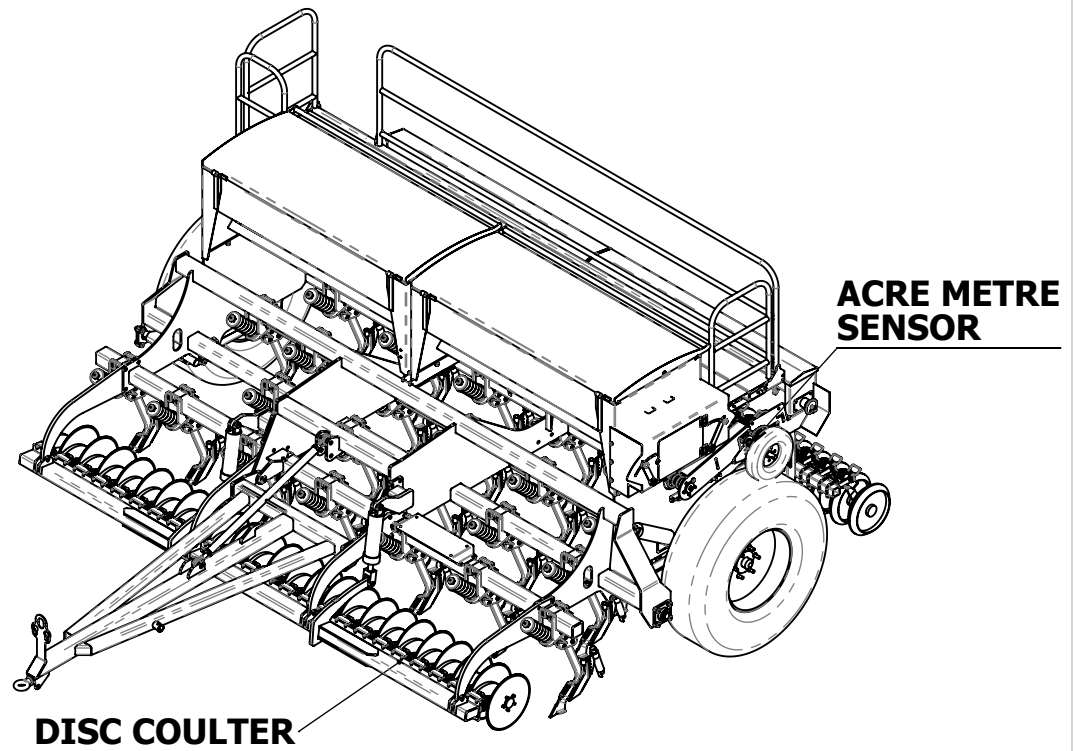
ITEM NO.	PART NUMBER	DESCRIPTION	dual bolt/QT Y.
1	0120050	CLAMP - BRACKET	1
2	0120051	CLAMP - SPRINGBASE	1
3	0120052	SHANK ADAPTOR	1
13	0120080	DUAL BOLT POINT	1
14	0120053-dual bolt	DUAL BOLT SHANK	1
15	0120069	SINGLE SHOOT BOOT - DUAL BOLT TYNE	1
16	0120085	DUAL SHOOT BOOT	1

### TYNE SINGLE BOLT

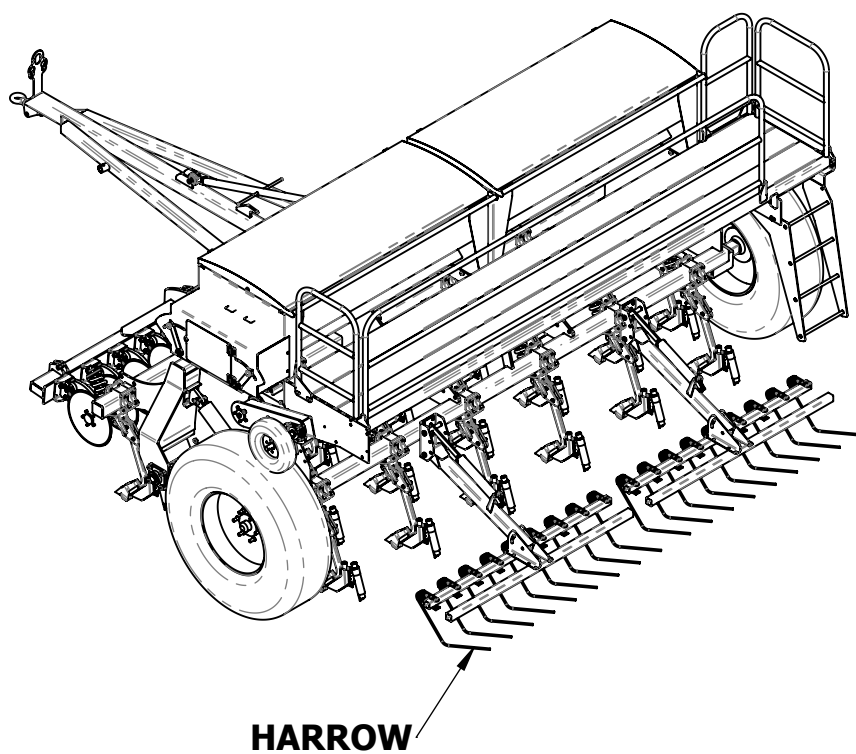


ITEM NO.	PART NUMBER	DESCRIPTION	dual bolt/QT Y.
1	0120050	CLAMP - BRACKET	1
2	0120051	CLAMP - SPRINGBASE	1
3	0120052	SHANK ADAPTOR	1
4	0120053	SINGLE BOLT SHANK	1
14	0120082	SINGLE BOLT POINT	1
15	0120081	SINGLE SHOOT BOOT - SINGLE BOLT TYNE	1
16	0120083	SHOOT BOOT HINGE	1
17	0120085	DUAL SHOOT BOOT	1

## 'TD' SEED DRILL OPTIONS

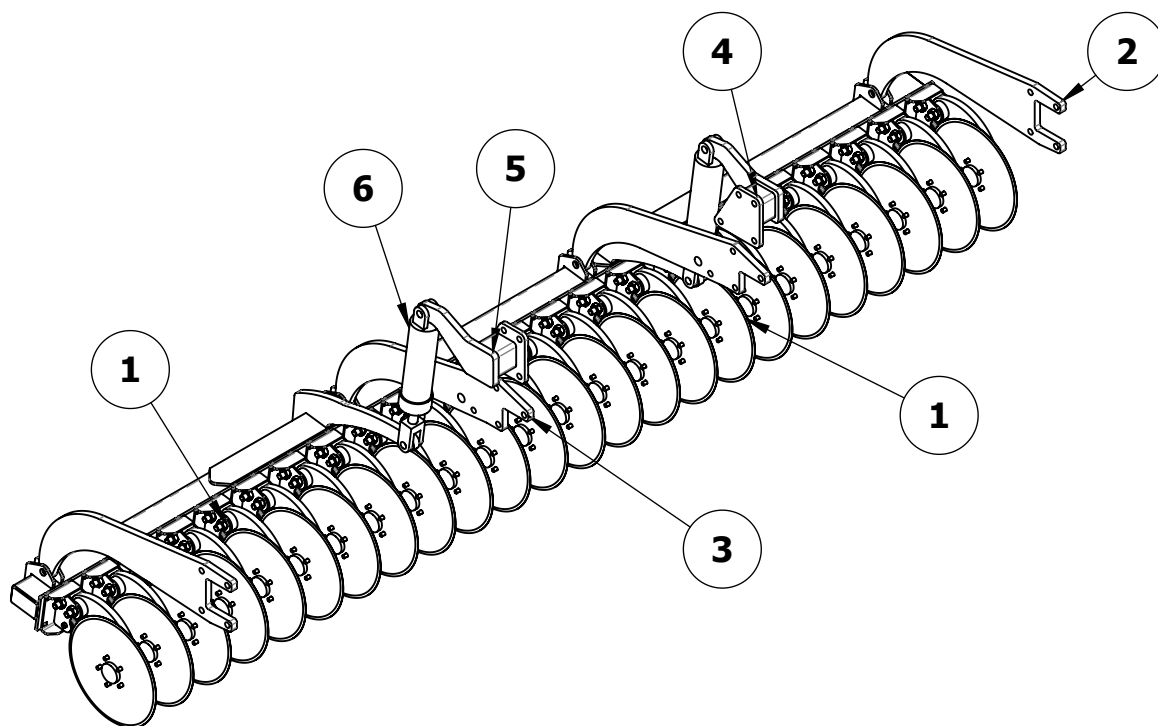


## 'TD' SEED DRILL OPTIONS



## OPTION - TD SEED DRILL

### DISC COULTER ASSEMBLY(COMPLETE)

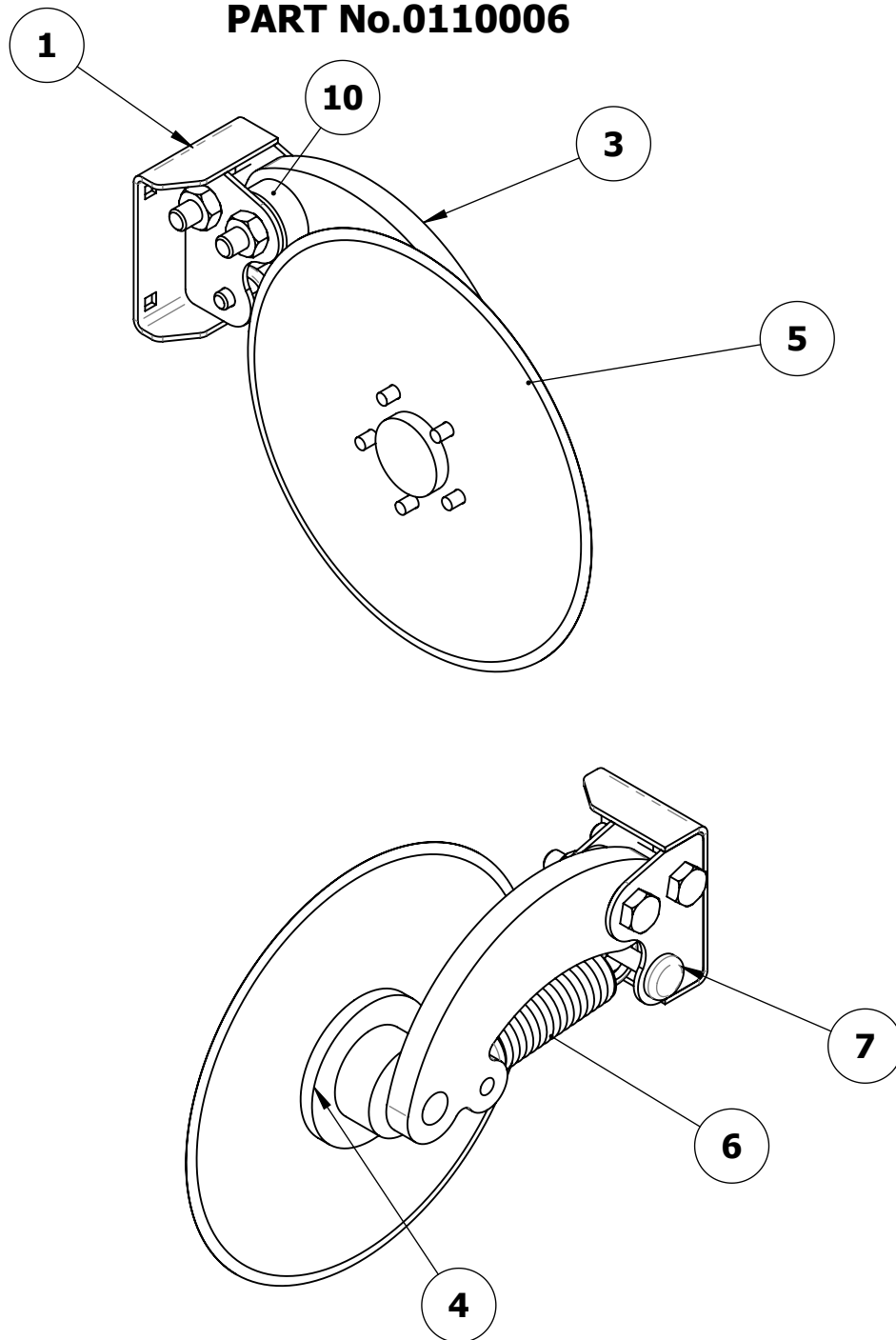


ITEM NO.	PART NUMBER	DESCRIPTION	SHEET	QTY.
1	0110014	DISC COULTER UNIT	2	1
2	0110012	DISC COULTER ARM OUTSIDE	1	2
3	0110013	DISC COULTER ARM INSIDE	1	2
4	0110019	CYLINDER TOP LUG R.H.	1	1
5	0110018	CYLINDER TOP LUG L.H.	1	1
6	2101006-B	HYDRAULIC CYLINDER BODY	1	2
7	2101006-R	HYDRAULIC CYLINDER PISTONROD	1	2

Issue:

1

## DISC ASSEMBLY PART No.0110006



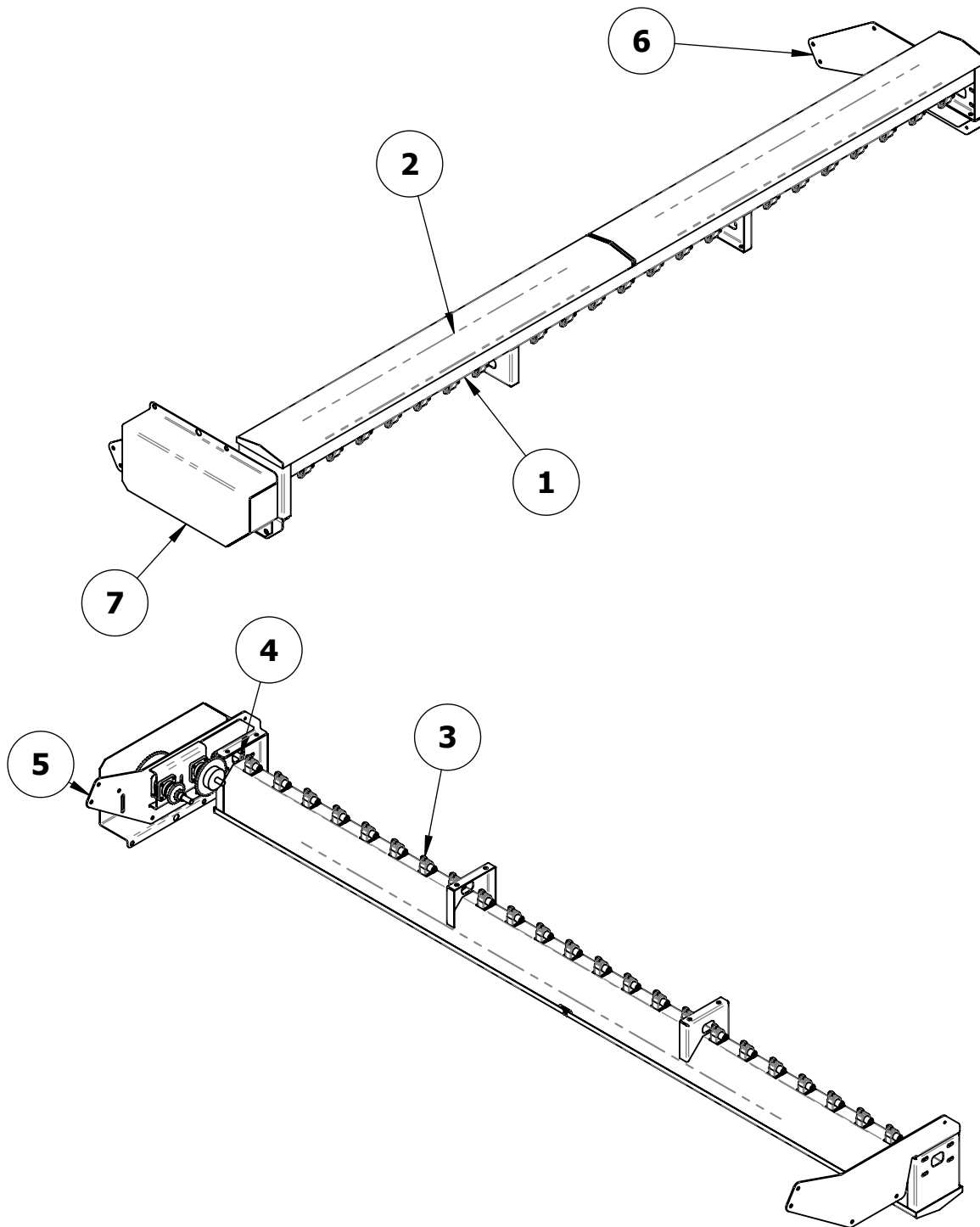
ITEM NO.	PART NUMBER	DESCRIPTION	QTY.
1	0110006-05	BASE PLATE	1
3	0110006-04	DISC - ARM	1
4	2203002	PIVOT HUB	1
5	disc 16inch	DISC-16" DIA	1
6	0110007	DISC-TENSION SPRING	1
7	pin	PIN	1
10	GE30ET-2RS	30 DIA BORE BUSH	1

Issue:

2

## OPTION - TD SEED DRILL

### SMALL SEED BOX ASSEMBLY

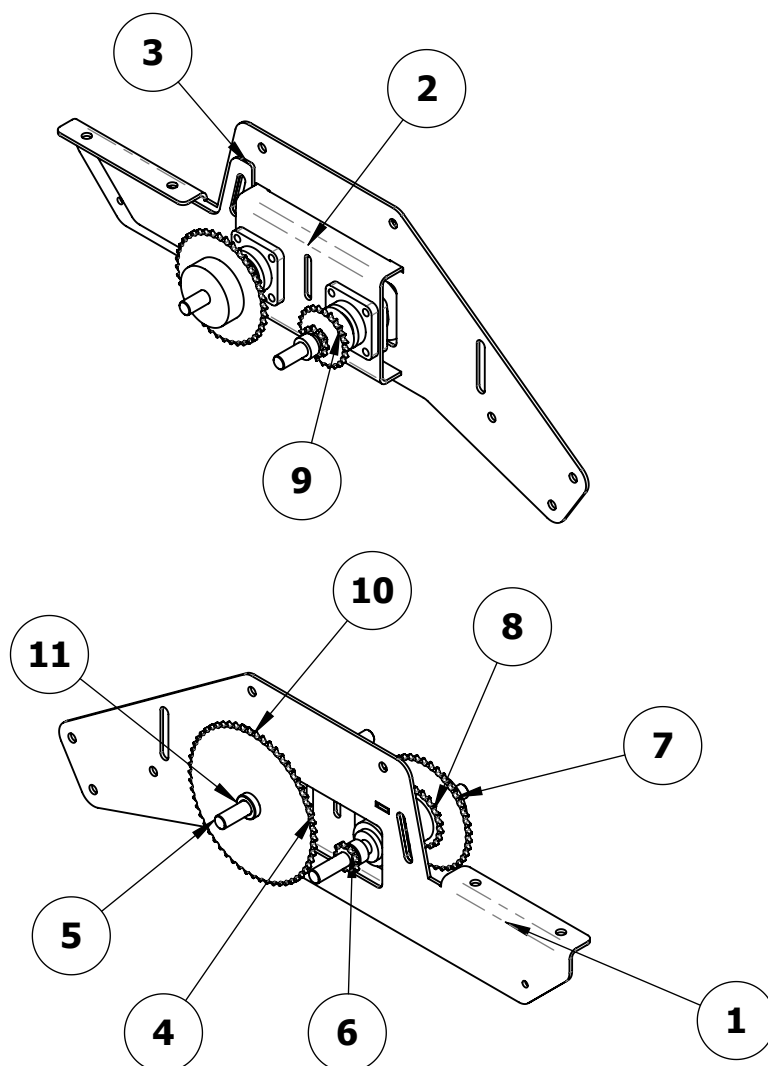


ITEM NO.	PART NUMBER	DESCRIPTION	SHEET	QTY.
1	08001 3850	BOX BOTTOM ASSY	3	1
2	08002 0	LID	3	2
3	0120076	FEEDER	3	24
4	0120071	DRIVE ASSY	5	1
5	0108002	SMALL SEED BOX LH MOUNT WITH GEARBOX	4	1
6	0108001	SMALL SEED BOX RH MOUNT	3	1
7	0108003	SMALL SEED BOX GUARD	3	1

Issue:

3

## SMALL SEED BOX LH MOUNT WITH GEARBOX PART No. 0108002

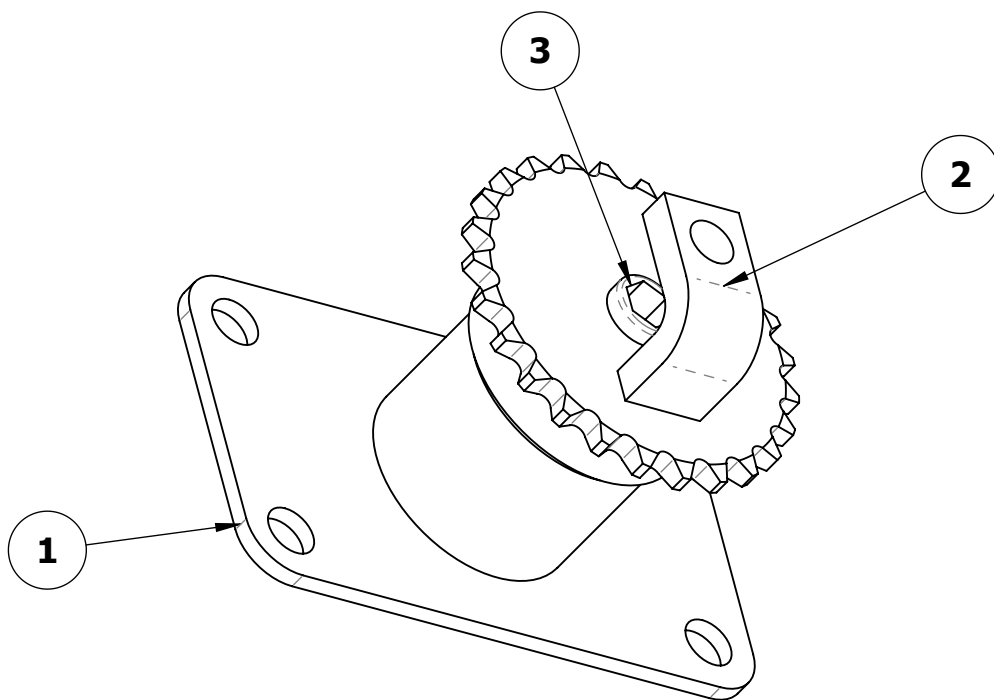


ITEM NO.	PART NUMBER	DESCRIPTION	QTY.
4	2601006	BEARING FLANGED - UCF204	4
5	0120075	DRIVESHAFT	2
6	2402001	SPROCKET - 10T x 20 BORE	2
7	2402020	SPROCKET - 40T x 20 BORE	1
8	2402010	SPROCKET- 21 TEETH x 20 BORE	1
9	2402011	SPROCKET - 24 TEETH x 20 BORE	1
10	2402024	SPROCKET - 40T x 35 BORE	1
11	0120079	BUSH 20 I.D. x 35O.D.	1

Issue:

4

**DRIVE ASSEMBLY**  
**PART No.0120071**



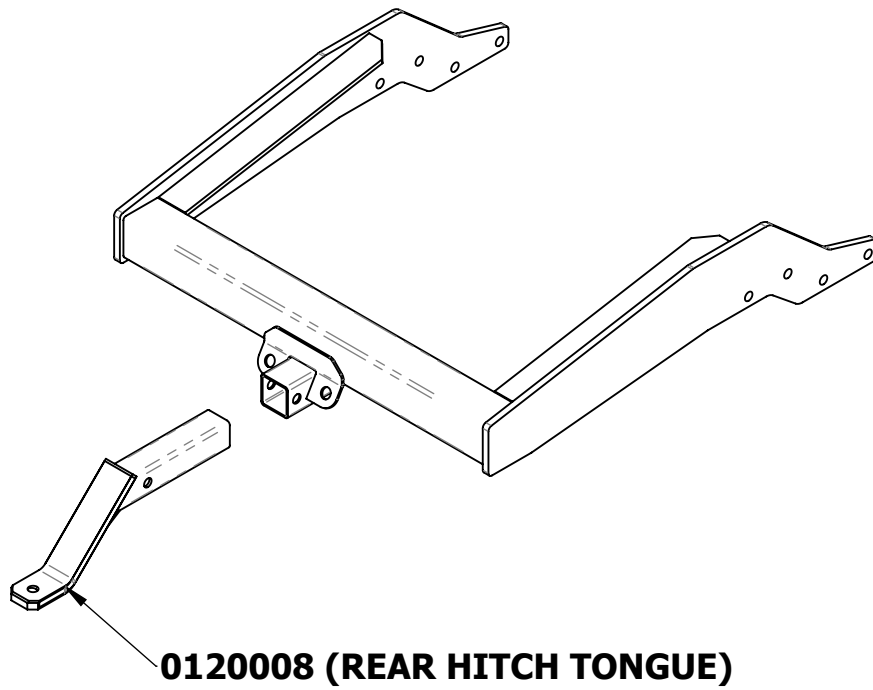
ITEM NO.	PART NUMBER	DESCRIPTION	QTY.
1	0120077	DRIVE ASSY - BODY	1
2	2402025	SPROCKET - 25T x 20 BORE	1
3	0120078	DRIVE SHAFT	1

**Issue:**

**5**

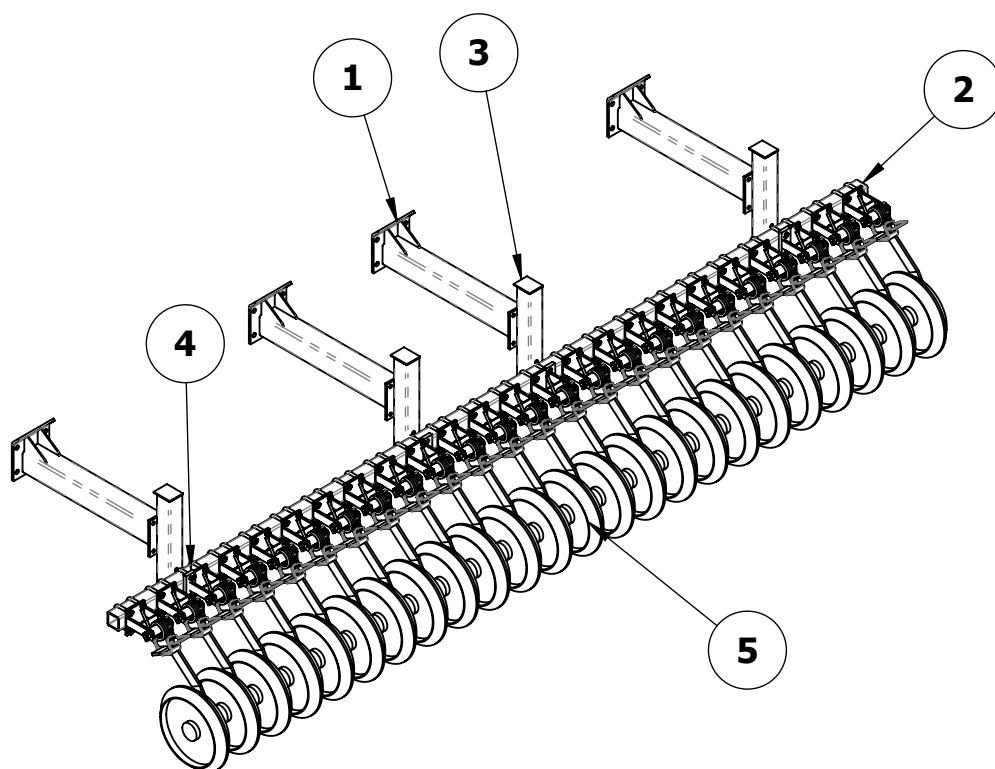
## OPTION - TD SEED DRILL

### REAR HITCH PART No. 0120007



## OPTION - TD SEED DRILL

### PRESS WHEEL ASSEMBLY

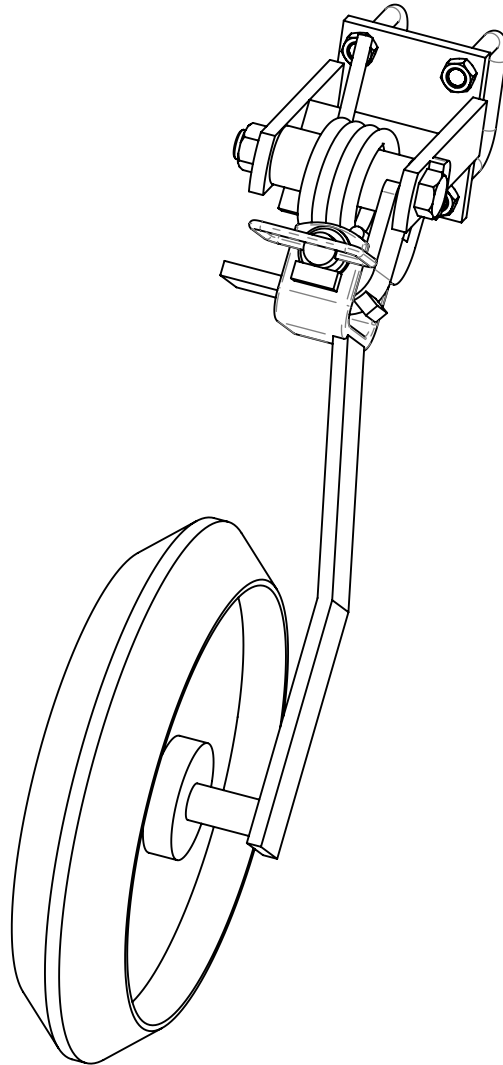


ITEM NO.	PART NUMBER	DESCRIPTION	SHEET	QTY.
1	0111003	PRESSWHEEL SUPPORT BEAM	7	4
2	0111005	PRESSWHEEL CROSS BEAM	7	1
3	0111004	PRESSWHEEL POST	7	4
4	0111006	PRESSWHEEL LOCKING PLATE	7	4
5	01110100	PRESSWHEEL	8	24

Issue:

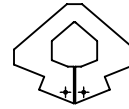
7

**PRESS WHEEL  
PART No. 01110100**



**PRESS WHEEL SHOWN WITH  
SEMI-PNEUMATIC WEDGE  
PROFILE TYRE-WIDTH 80mm**

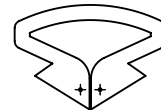
**AVAILABLE TYRE  
PROFILES**



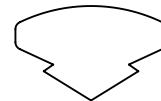
**SEMI-PNEUMATIC WEDGE  
PROFILE TYRE WIDTH 80mm**



**SEMI-PNEUMATIC WEDGE  
PROFILE TYRE WIDTH 55mm**



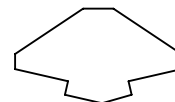
**SEMI-PNEUMATIC FLAT  
PROFILE TYRE WIDTH 100mm**



**SOLID FLAT PROFILE  
TYRE WIDTH 100mm**



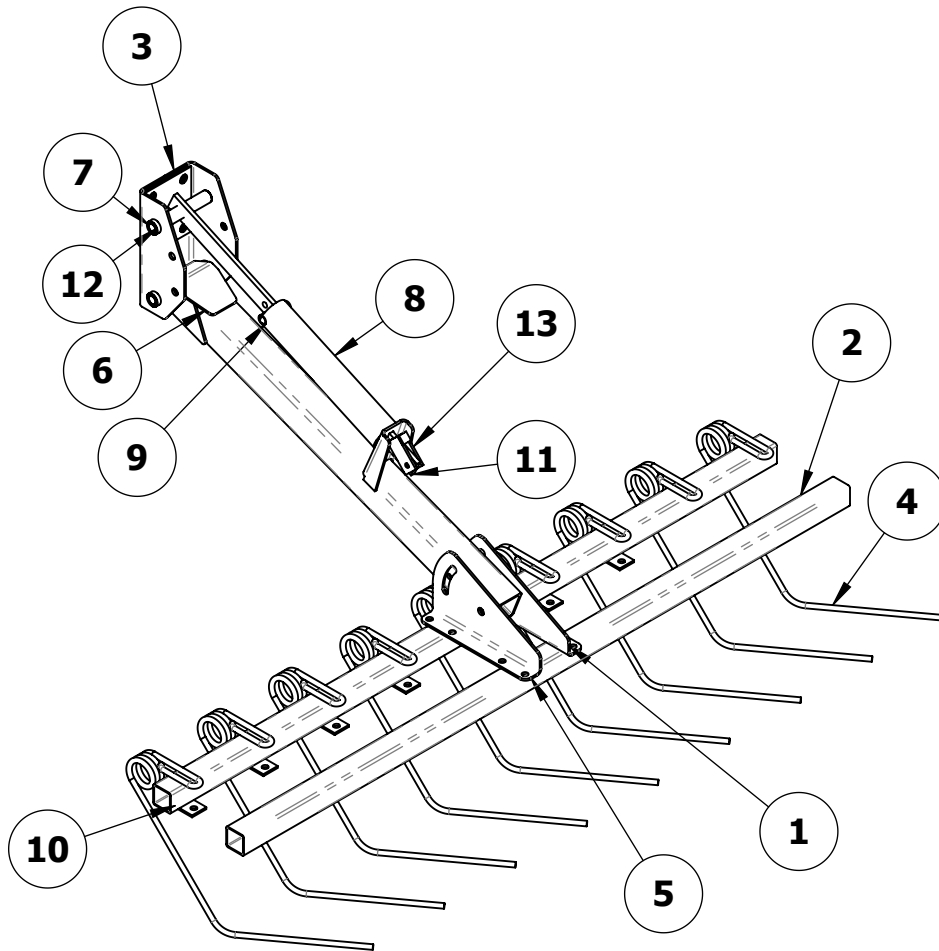
**SOLID WEDGE PROFILE  
TYRE WIDTH 55mm**



**SOLID WEDGE/BANKED PROFILE  
TYRE WIDTH 80mm**

## OPTION - TD SEED DRILL

### HARROW



ITEM NO.	PART NUMBER	DESCRIPTION	QTY.
1	0702002-01	BOTTOM PIVOT PLATE -RH	1
2	0703001-01	50 x 5 SHS	2
3	0702003	TOP PIVOT ASSEMBLYS	1
4	0704001	HARROW TYNE	9
5	0702002-01-LH	BOTTOM PIVOT PLATE-LH	1
6	0702001	MAIN ARM	1
7	0702004	PIN	2
8	0702006-19098A	SPRING 56 OD, 6.4mm, 400 LONG	1
9	0702007	SPACER	2
10	0702008	HARROW-BOLT PLATE	9
11	07002005	SPRING ARM	1
12	0702003-02	BUSH-20.2 BORE	2
13	07002009	PIN UP BRACKET	1