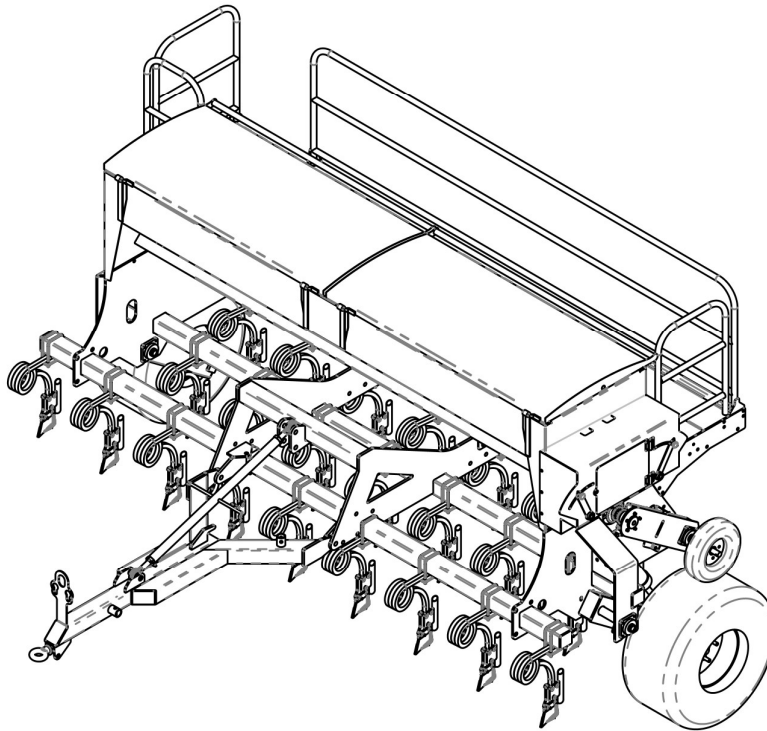
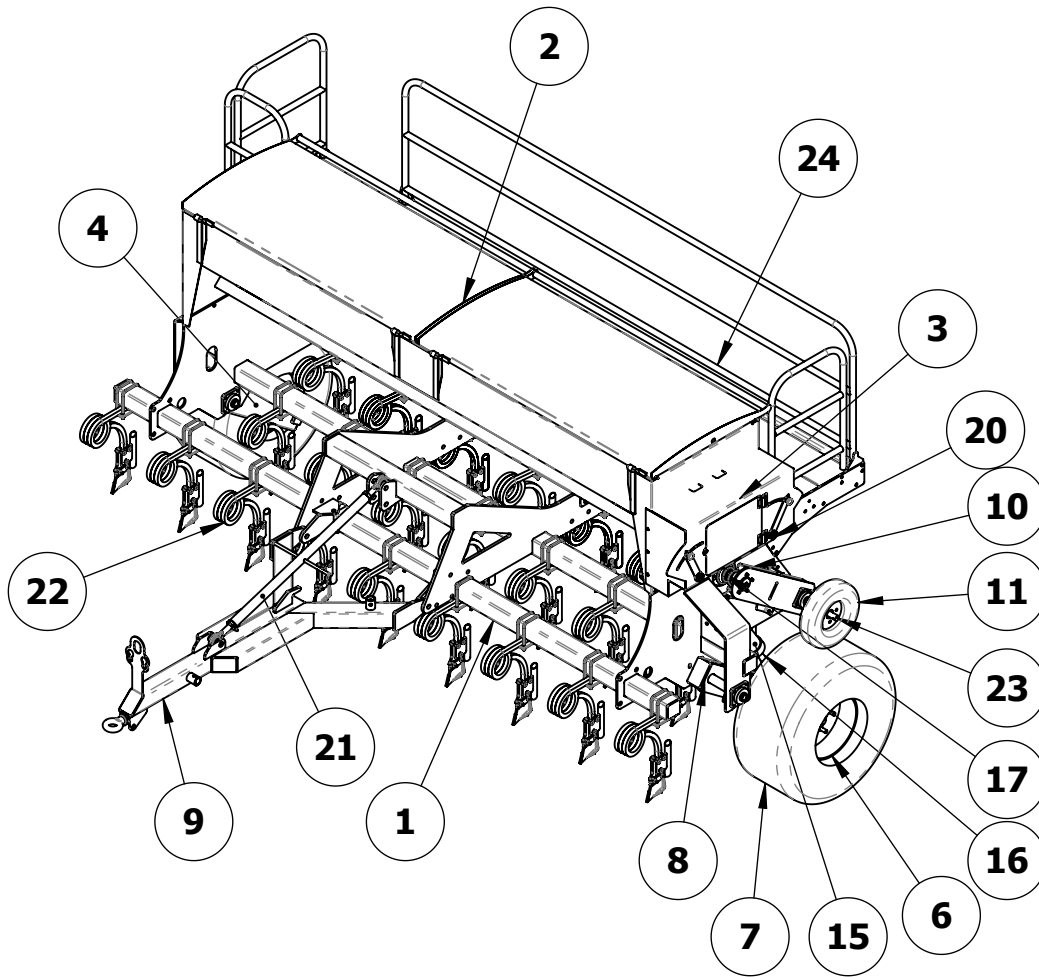


DAVIMAC 'SD' SEED DRILL PARTS LIST



FROM: SD 0110 TO SD 1314

DAVIMAC 'SD' BASIC CONFIGURATION



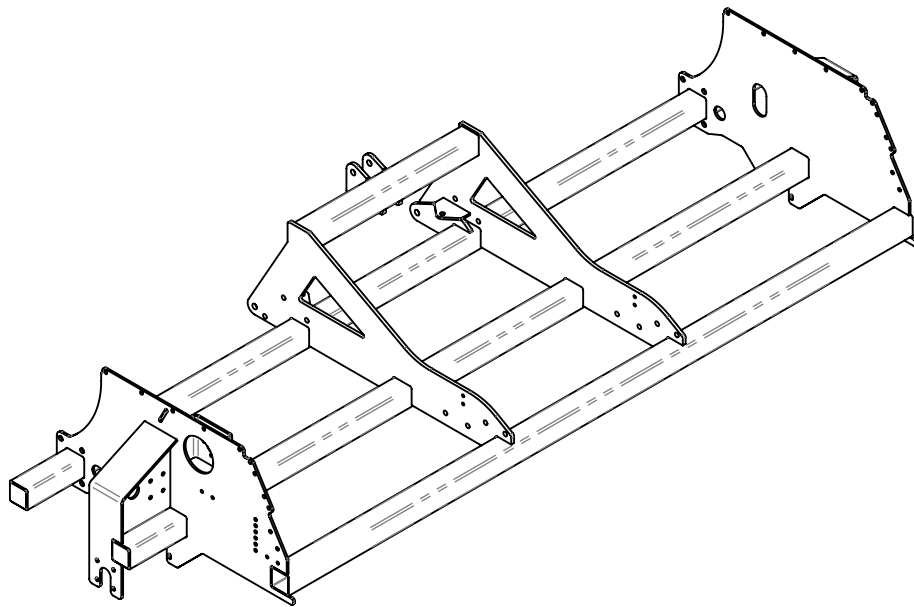
**NOTE: 3 1/4" DIA HYDRAULIC CYLINDER USED ON THE LEFT SIDE
3" DIA HYDRAULIC CYLINDER USED ON THE RIGHT SIDE.**

ITEM NO.	PART NUMBER	DESCRIPTION	SHEET	3500-22/QT Y.
1	0102003	FRAME	2	1
2	0105009	SEED BOX	5	1
3	0107002	GEAR BOX GUARD	6	1
4	0104005	SD - AXLE LH	7	1
6	2201001	WHEEL HUB	1	2
7	2202003	TYRE SIZE 400/60-15.5	1	2
8	0104006	SD - AXLE RH	7	1
9	0103003	DF HITCH	3	1
10	0107004	DRIVE ARM	8	1
11	2202002	375 DIA x 100 TYRE	1	1
15	2101006-B	3 1/4" HYDRAULIC CYLINDER	1	1
16	2101006-R	3 1/4" HYDRAULIC CYLINDER PISTON	1	1
17	0107006	DRIVE GEAR CLUSTER	10	1
20	Drive Kit	DRIVE KIT	9	1
21	HITCH LEVEL BAR	HITCH LEVELLING BAR	4	1
22		TYNE OPTION	13/14	32
23	0107014	SMALL WHEEL AXLE	11	1
24	PLATFORM-SD	SD - PLATFORM	12	1

Issue:

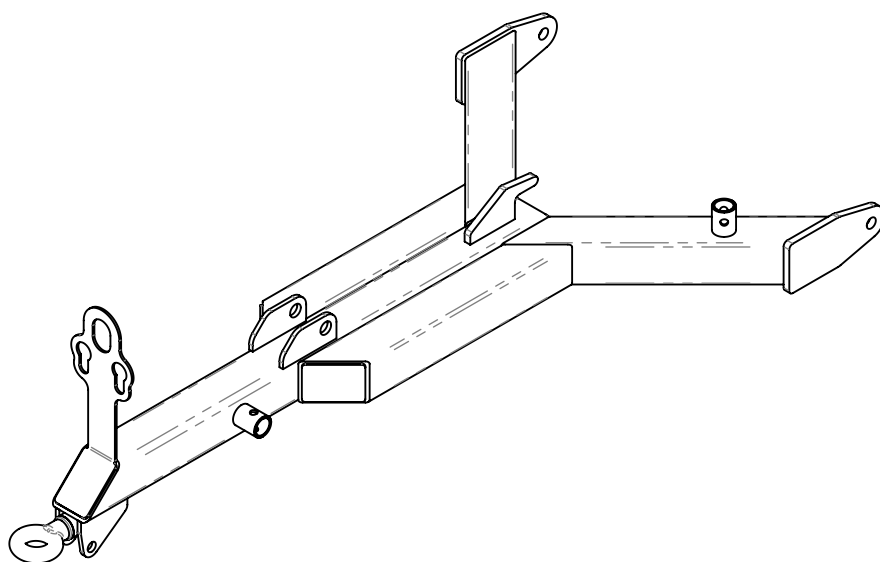
1

**'DS' FRAME
PART No. 0102003**

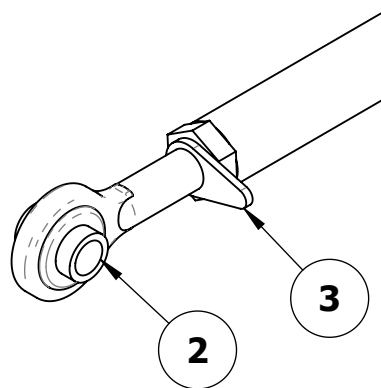
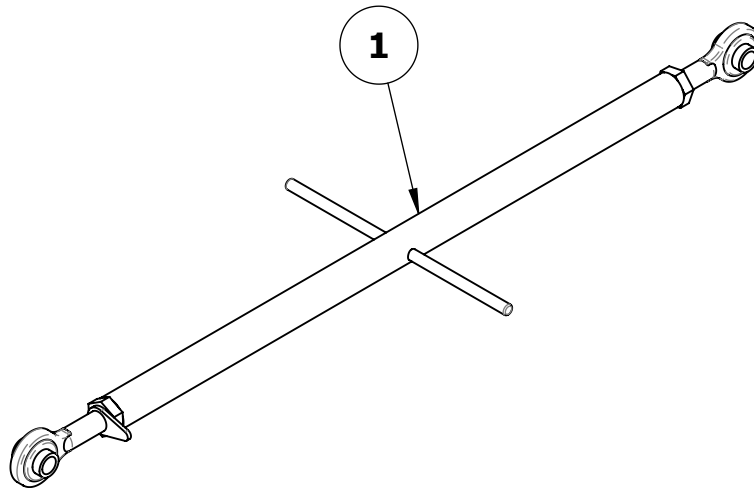


HITCH

PART No. 0103003



HITCH LEVELLING BAR

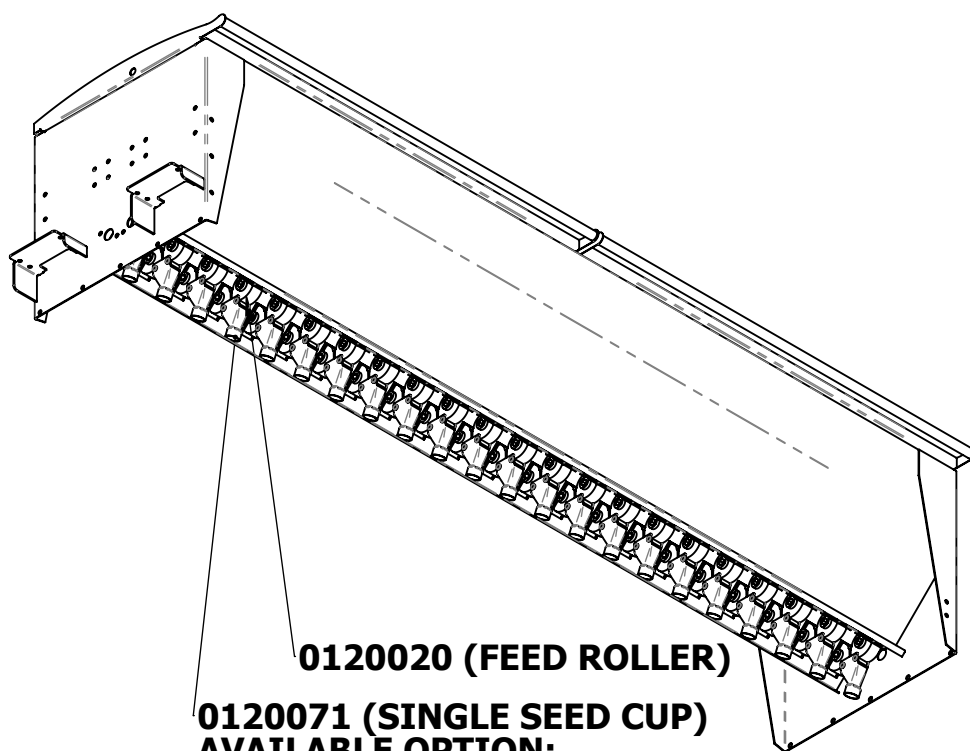
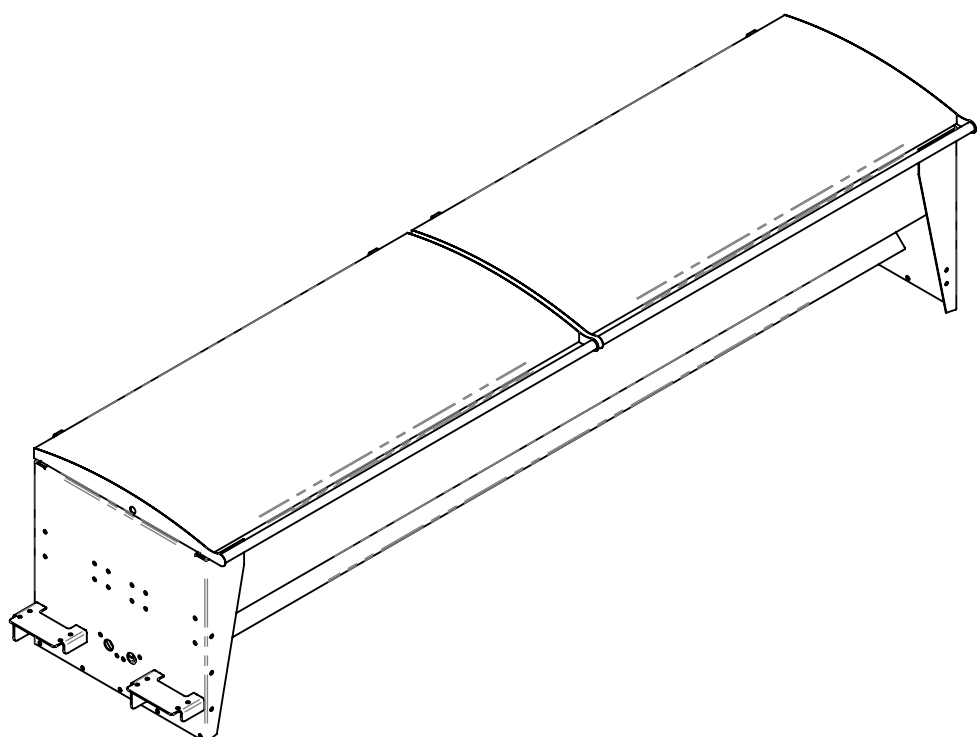


ITEM NO.	PART NUMBER	DESCRIPTION	QTY.
1	0120072	HITCH LEVELLING BAR-BODY	1
2	0120073	ROD END	2
3	0120074	LOCK WASHER	1

Issue:

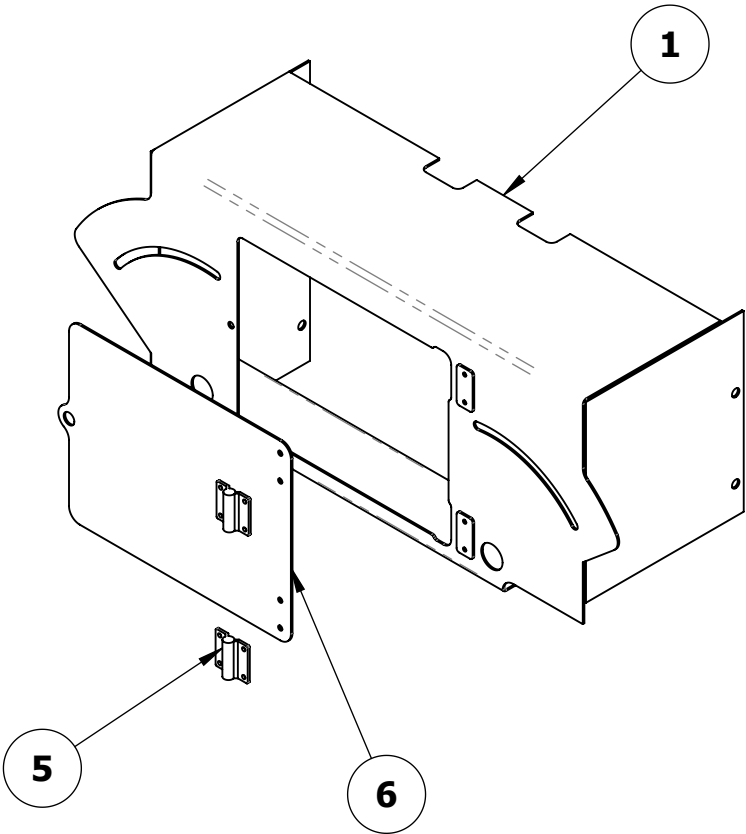
4

**SEED BOX
PART No.0105009**



0120020 (FEED ROLLER)
0120071 (SINGLE SEED CUP)
AVAILABLE OPTION:
DUAL SEED CUP - PART No.0120084

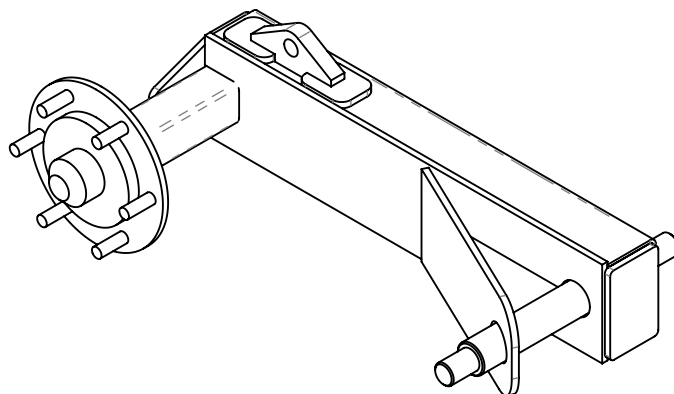
GEAR BOX GUARD
PART No. 0107002



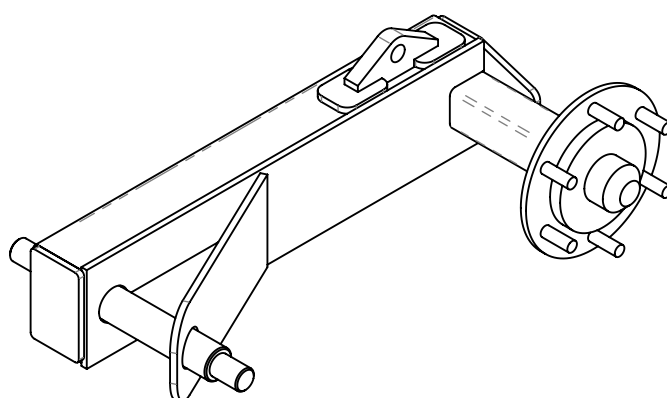
ITEM NO.	PART NUMBER	DESCRIPTION	QTY.
1	0107002-01	MAIN BODY	1
5	2501001	HINGE – BUTT	2
6	0107003	GEAR BOX GUARD DOOR	1

Issue:

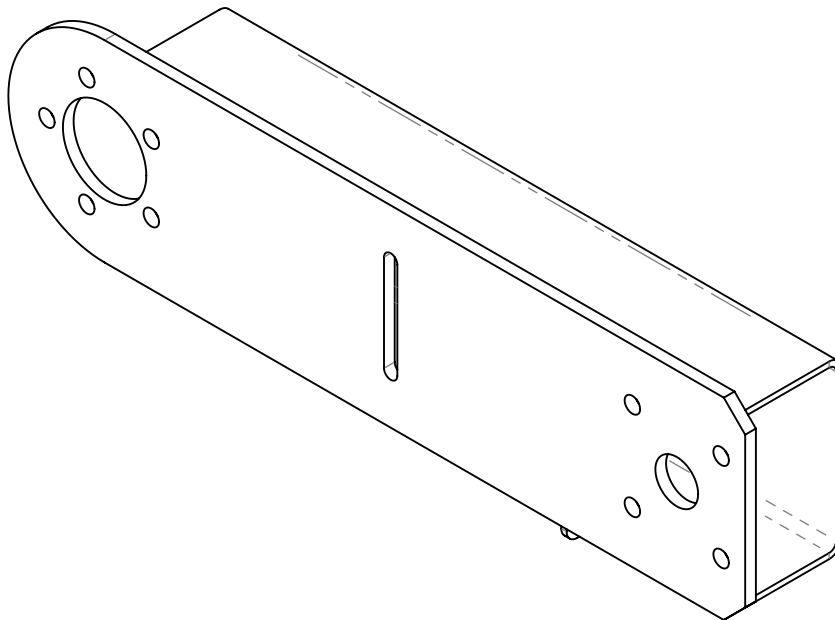
AXLE LH
PART No. 0104005



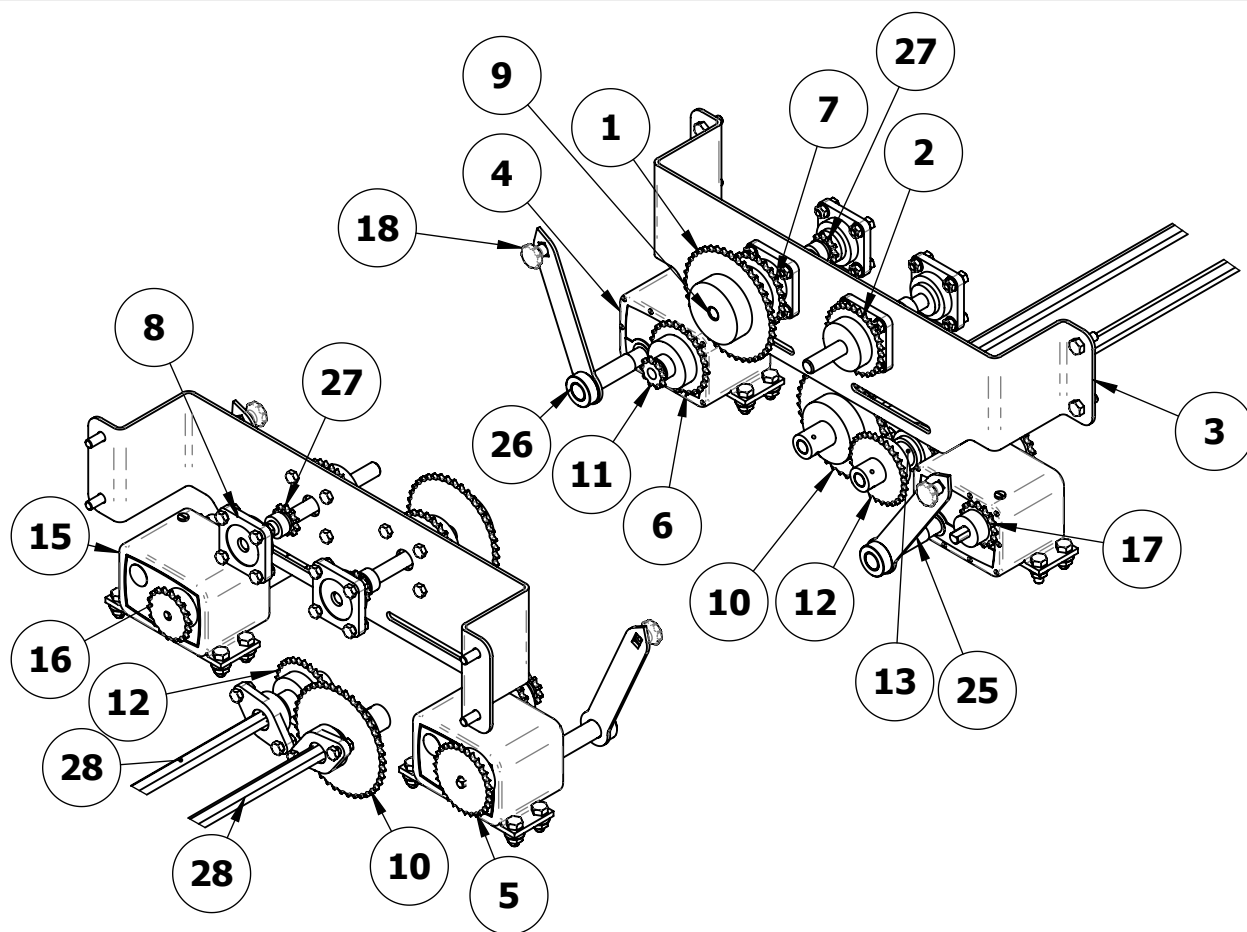
AXLE RH
PART No. 0104006



DRIVE ARM
PART No. 0107004

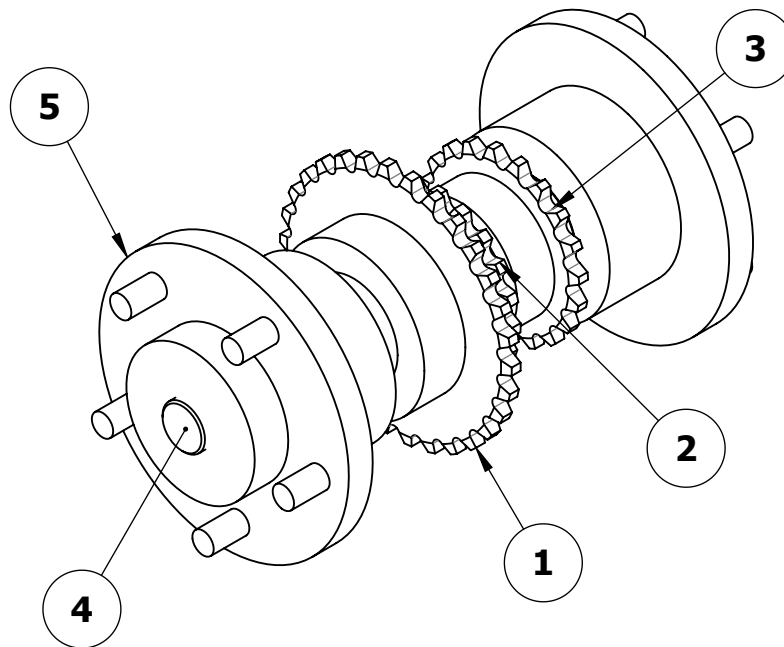


DRIVE KIT



ITEM NO.	PART NUMBER	DESCRIPTION	QTY.
1	2402020	SPROCKET - 40T x 20 BORE	1
2	2402015	SPROCKET - 30T x 20 BORE	1
3	0107001	DRIVE SHAFT SUPPORT	1
4	2410002	ZERO MAX - Y1	1
5	2402014	SPROCKET - 30T x 1/2 BORE	1
6	2402013	SPROCKET - 25T x 5/8 BORE	1
7	2402012	SPROCKET - 25T x 20 BORE	1
8	2601006	BEARING FLANGED - UCF204	4
9	0107011	BOX IDLER SHAFT	2
10	2402021	SPROCKET - 40T x 35 BORE	1
11	2402002	SPROCKET - 10T x 5/8 BORE	1
12	2402017	SPROCKET - 30T x 35 BORE	1
13	0107010	CLUTCH BUSH	2
14	2601007	BEARING FLANGED - UCFL204	2
15	2410003	ZERO MAX - Y2	1
16	2402006	SPROCKET - 18T x 1/2 BORE	1
17	2402004	SPROCKET - 15T x 5/8 BORE	1
18	2507001	KNOB - BLACK SCREW	2
25	0107013	GEAR LEVER	2
26	0107013-01	GEAR LEVER ARM	2
27	2402022	SPROCKET - 10T x 5/8 BORE	2
28	0107015	BOX SHAFT HEX	2

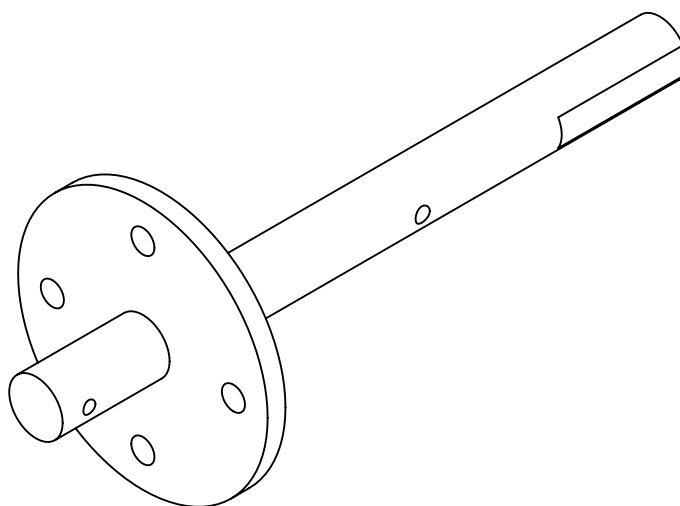
DRIVE GEAR CLUSTER **PART No. 0107006**



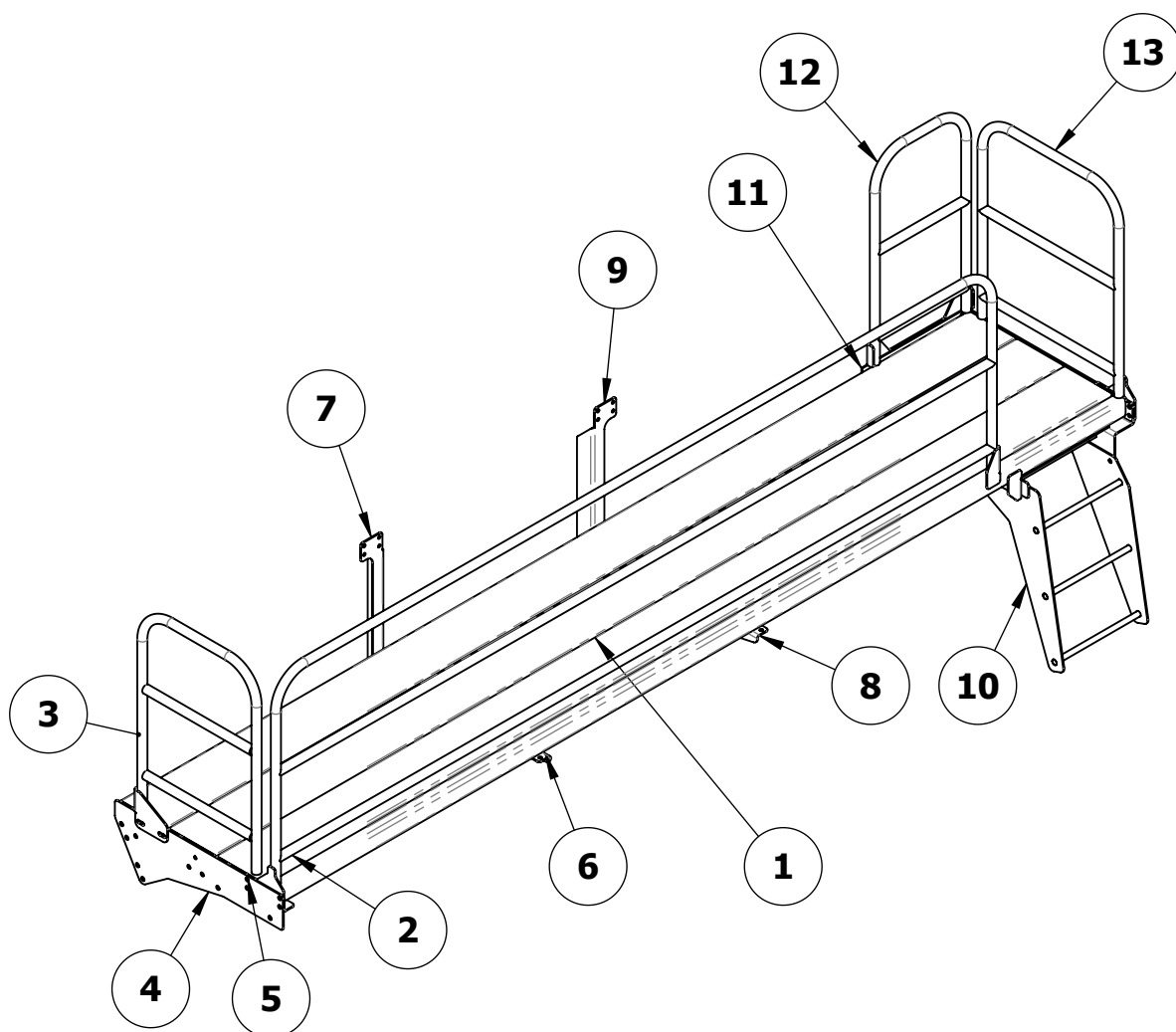
ITEM NO.	PART NUMBER	DESCRIPTION	QTY.
1	2402018	SPROCKET-30T x 50 BORE	1
2	2402009	SPROCKET-20T x 50 BORE x 13 BOSS	1
3	2402008	SPROCKET- 20T x 50 BORE x 21 BOSS	1
4	0107006	DRIVE SHAFT-PIVOT	1
5	2203002	PIVOT HUB	2

Issue:

**SMALL WHEEL AXLE
PART No. 0107014**



SD-PLATFORM



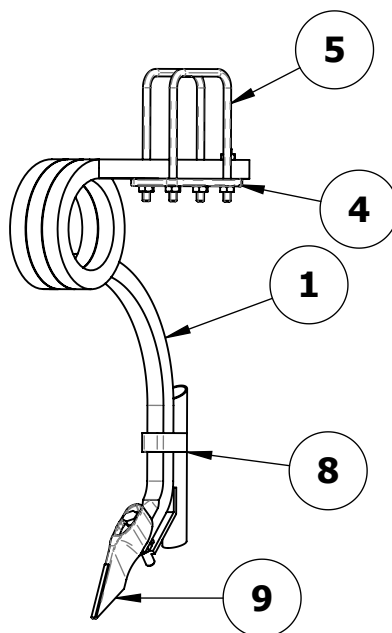
ITEM NO.	PART NUMBER	DESCRIPTION	QTY.
1	01060021	PLATFORM DECK	3
2	0106022	HANDRAIL MAIN - SD DRILL	1
3	0106014	HANDRAIL LH - TD DRILL	1
4	0106008-01	PLATFORM SUPPORT LH - SD DRILL	1
5	0106008-02	PLATFORM SUPPORT	1
6	0106013-LH	PLATFORM CENTRE SUPPORT- LH	1
7	0106012	PLATFORM END SUPPORT- LH	1
8	0106013-RH	PLATFORM CENTRE SUPPORT- RH	1
9	0106012-RH	PLATFORM END SUPPORT - RH	1
10	0106023	STEPS - SD DRILL	1
11	0106016	STEP SUPPORT - SD DRILL	1
12	0106018	HANDRAIL RH - TD DRILL	1
13	0106019	HANDRAIL RH END - TD DRILL	1

Issue:

12

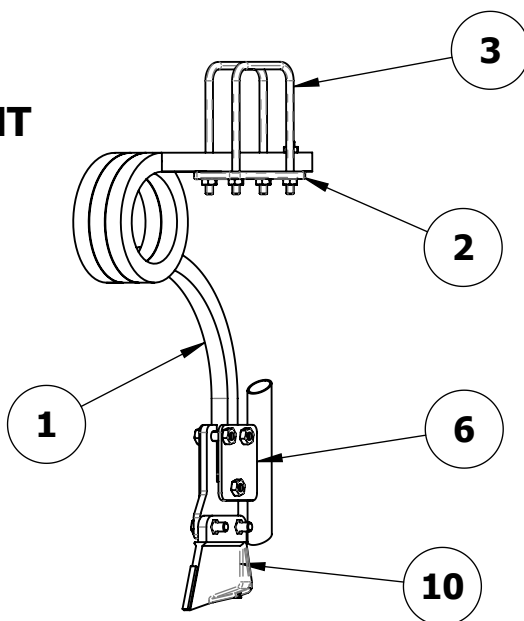
TYNE OPTIONS

COIL TYNE SINGLE BOLT SHANK



ITEM NO.	PART NUMBER	DESCRIPTION	QTY.
1	0120064	SINGLE BOLT SHANK	1
4	0120065	LOCKING PLATE	1
5	0120066	100 x100 U-BOLT	2
8	0120086	SHOOT BOOT	1
9	0120082	SINGLE BOLT POINT	1

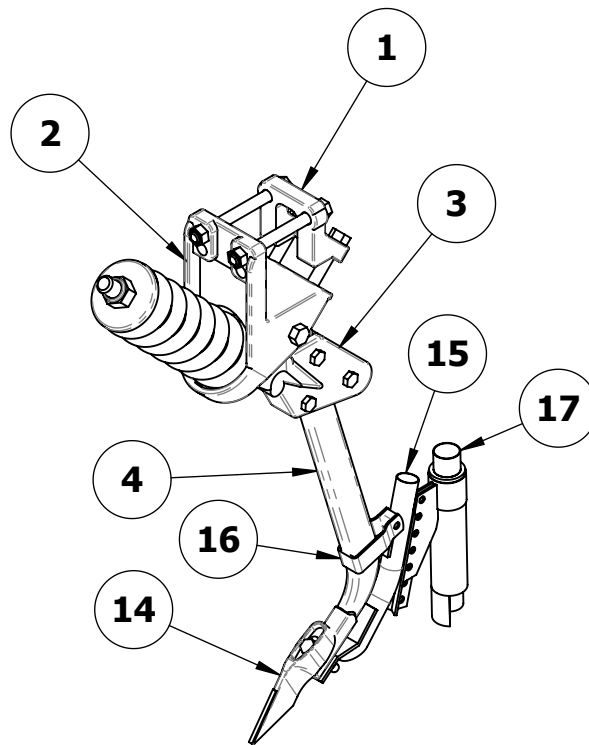
COIL TYNE ADAPTOR POINT



ITEM NO.	PART NUMBER	DESCRIPTION	QTY.
1	0120087	SHANK	1
2	0120065	LOCKING PLATE	1
3	0120066	100 x100 U-BOLT	2
6	0120006	POINT ADAPTOR & SINGLE SHOOT BOOT	1
10	0120088	POINT	1

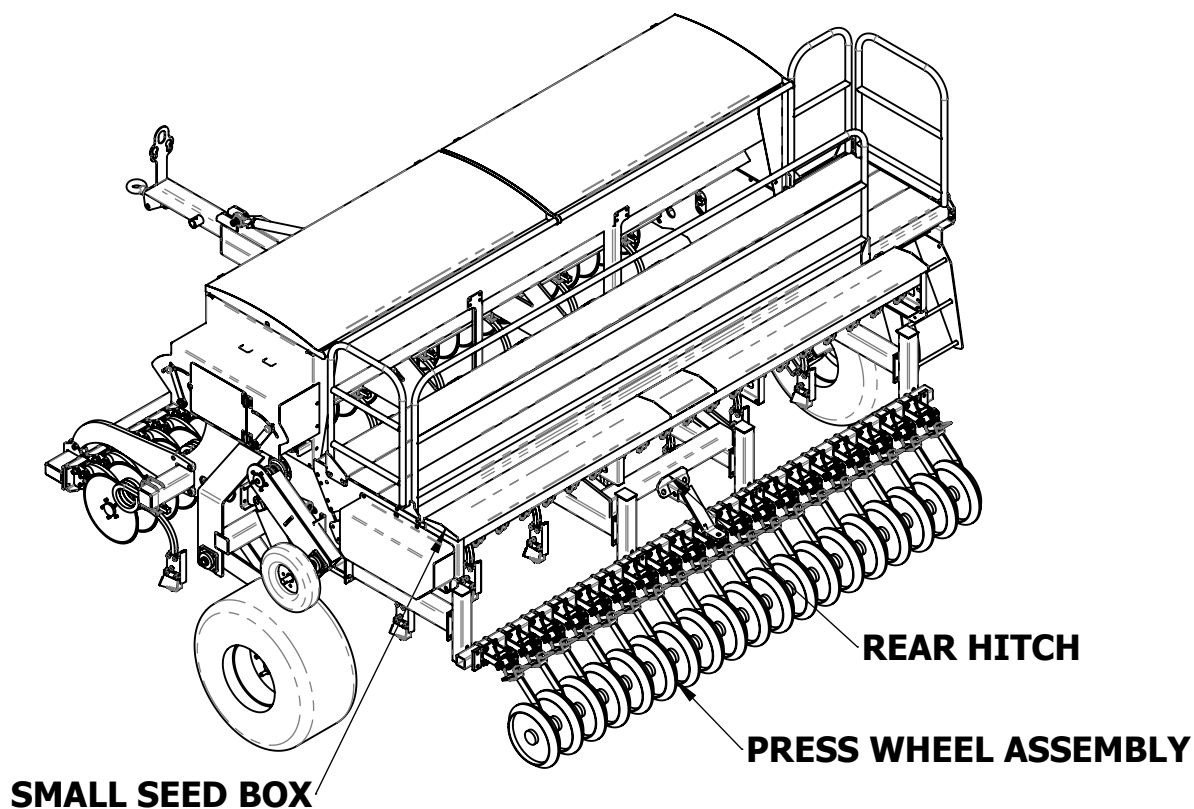
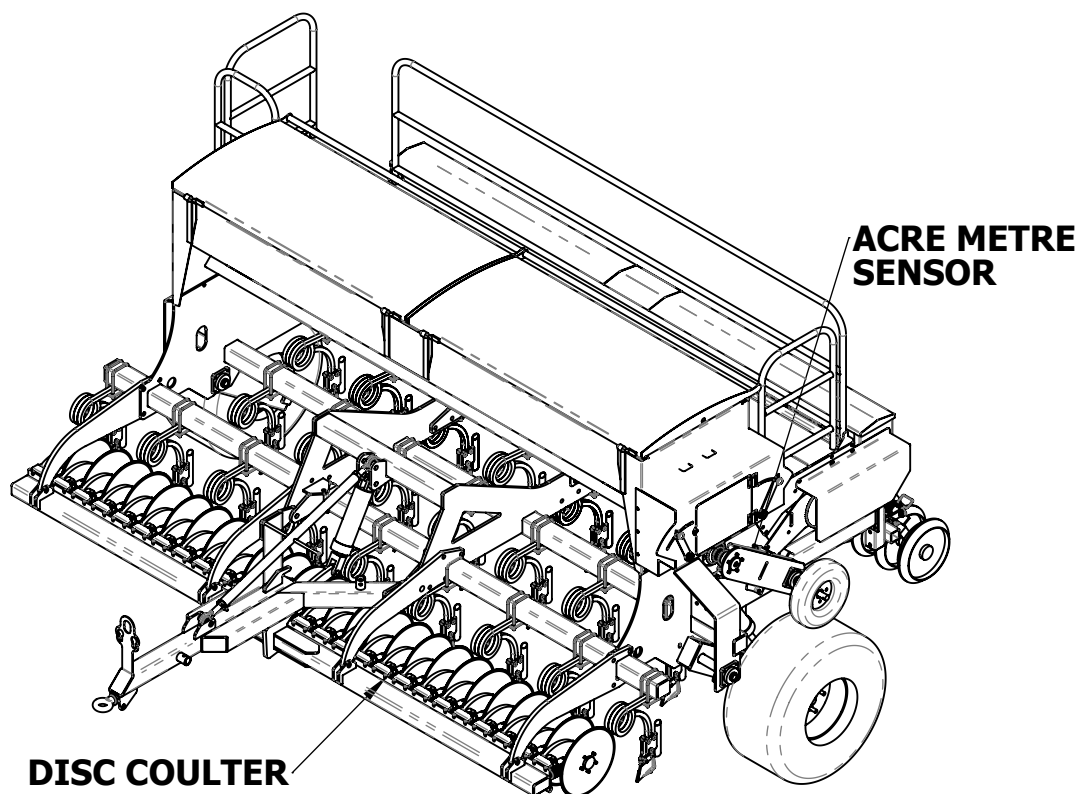
TYNE OPTION

TYNE SINGLE BOLT

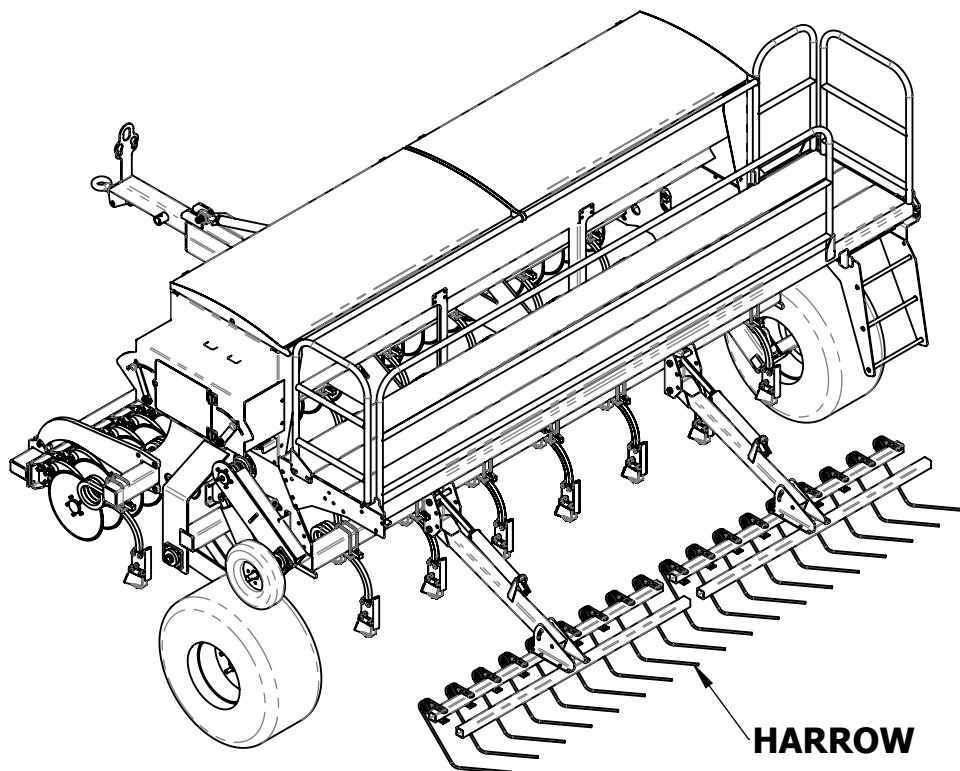


ITEM NO.	PART NUMBER	DESCRIPTION	dual bolt/Q TY.
1	0120050	CLAMP - BRACKET	1
2	0120051	CLAMP - SPRINGBASE	1
3	0120052	SHANK ADAPTOR	1
4	0120053	SINGLE BOLT SHANK	1
14	0120082	SINGLE BOLT POINT	1
15	0120081	SINGLE SHOOT BOOT - SINGLE BOLT TYNE	1
16	0120083	SHOOT BOOT HINGE	1
17	0120085	DUAL SHOOT BOOT	1

'SD' SEED DRILL OPTIONS

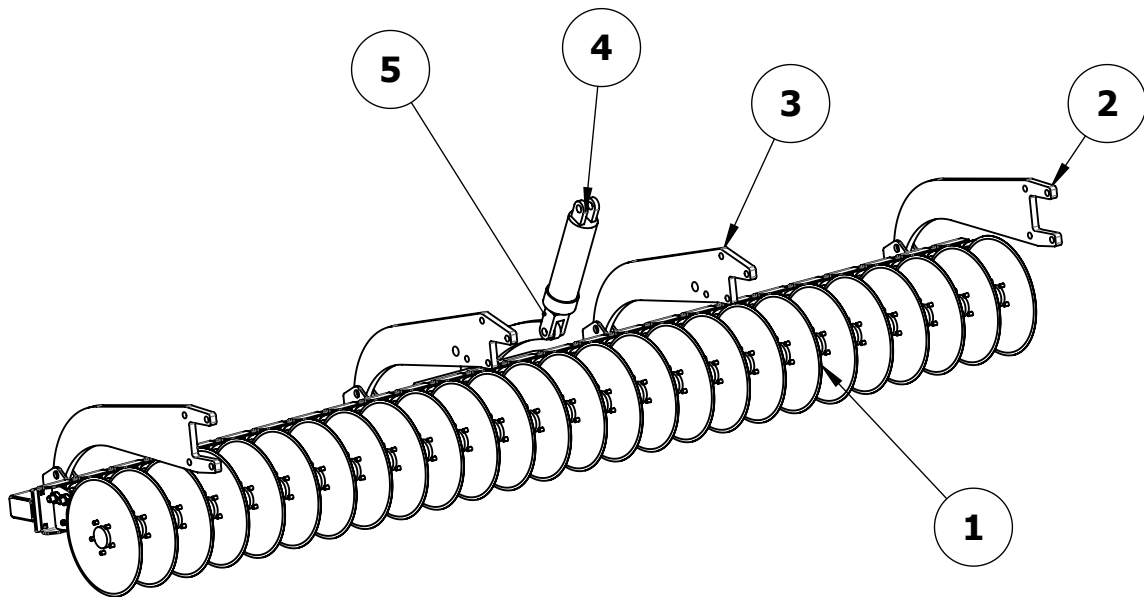


'SD' SEED DRILL OPTION



OPTION - SD SEED DRILL

DISC COULTER ASSEMBLY (COMPLETE)

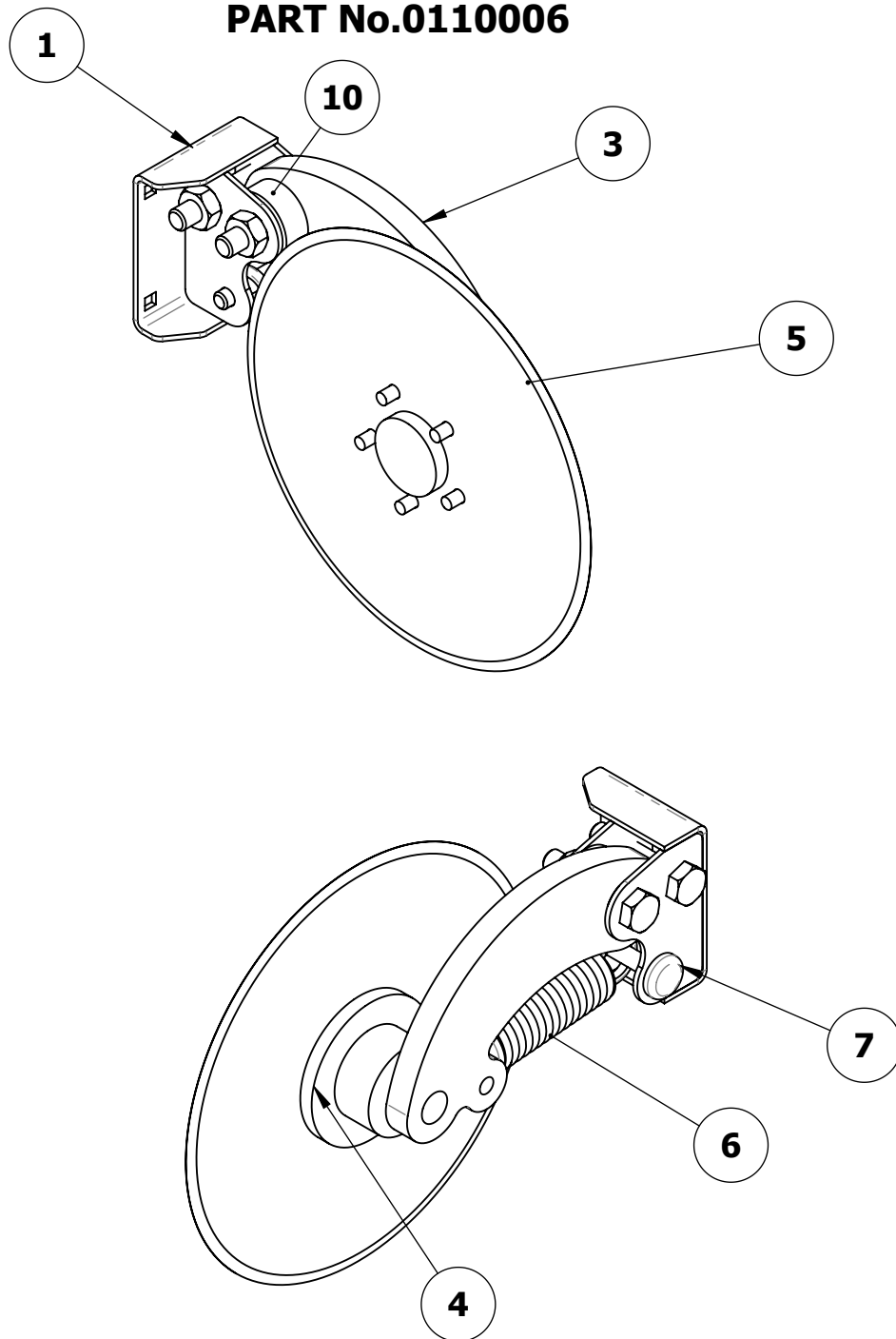


ITEM NO.	PART NUMBER	DESCRIPTION	SHEET	QTY.
1	0110006	DISC COULTER UNIT	2	1
2	0110004	DISC COULTER ARM - OUTSIDE	1	2
3	0110005	DISC COULTER ARM - INSIDE	1	2
4	2101006-B	3 1/4" HYDRAULIC CYLINDER	1	1
5	2101006-R	3 1/4" HYDRAULIC CYLINDER PISTON	1	1

Issue:

1

DISC ASSEMBLY **PART No.0110006**



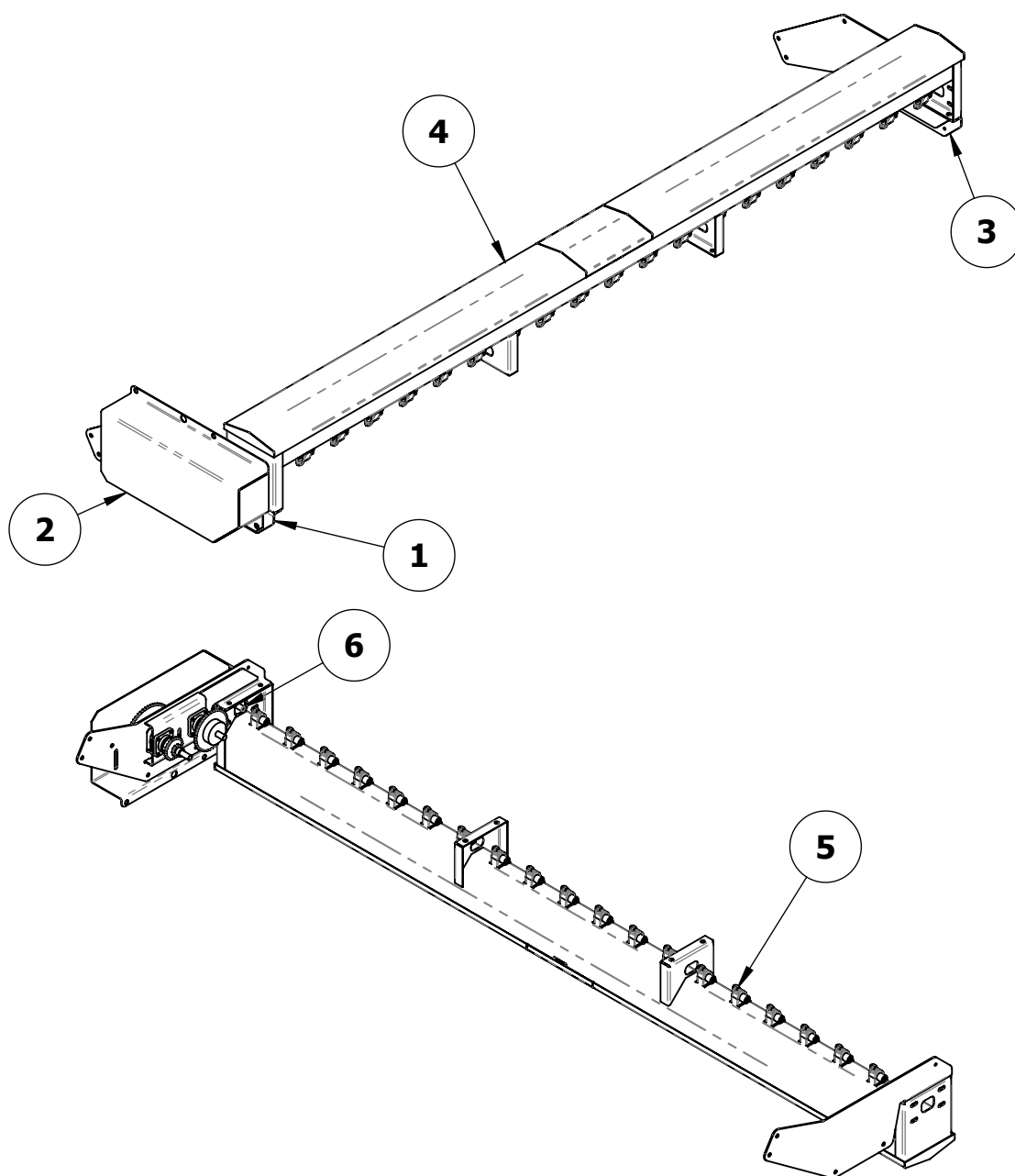
ITEM NO.	PART NUMBER	DESCRIPTION	QTY.
1	0110006-05	BASE PLATE	1
3	0110006-04	DISC - ARM	1
4	2203002	PIVOT HUB	1
5	disc 16inch	DISC-16" DIA	1
6	0110007	DISC-TENSION SPRING	1
7	pin	PIN	1
10	GE30ET-2RS	30 DIA BORE BUSH	1

Issue:

2

OPTION - SD SEED DRILL

SMALL SEED BOX ASSEMBLY

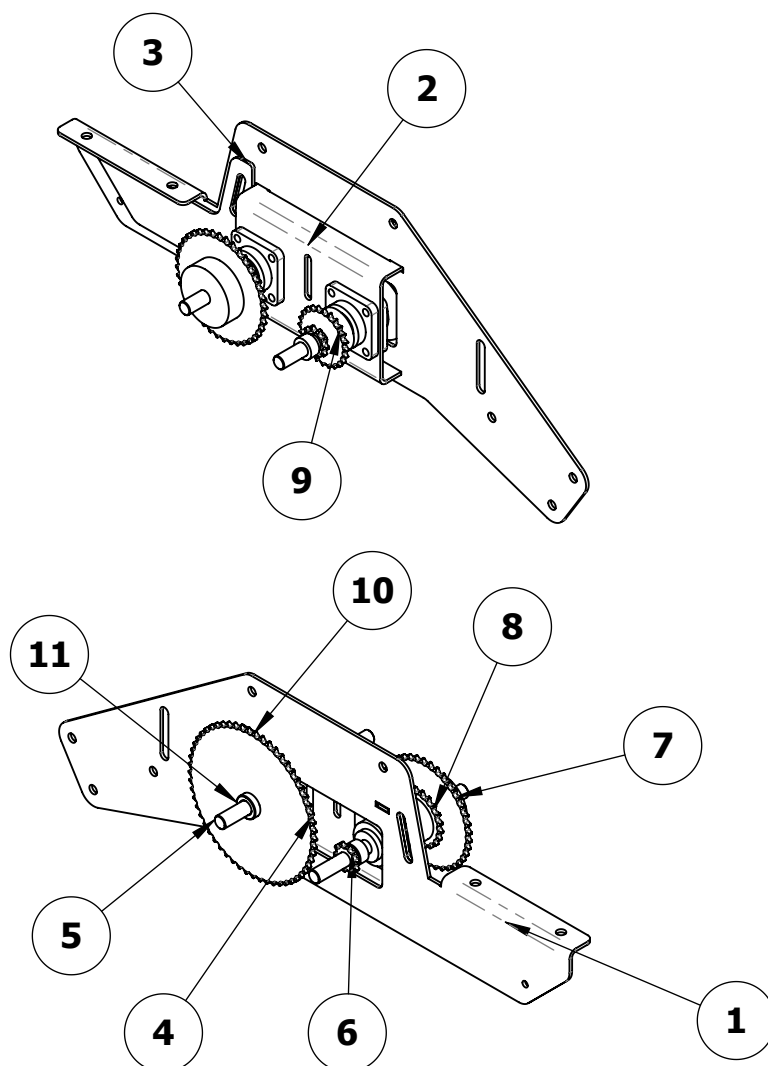


ITEM NO.	PART NUMBER	DESCRIPTION	SHEET	QTY.
1	0108002	SMALL SEED BOX LH MOUNT WITH GEARBOX	4	1
2	0108003	SMALL SEED BOX GUARD	3	1
3	0108001	SMALL SEED BOX RH MOUNT	3	1
4	08_STANDARD BOX 3500	SD -SMALL SEED BOX	3	1
5	0120076	FEEDER	3	20
6	0120071	DRIVE ASSY	5	1

Issue:

3

SMALL SEED BOX LH MOUNT WITH GEARBOX PART No. 0108002

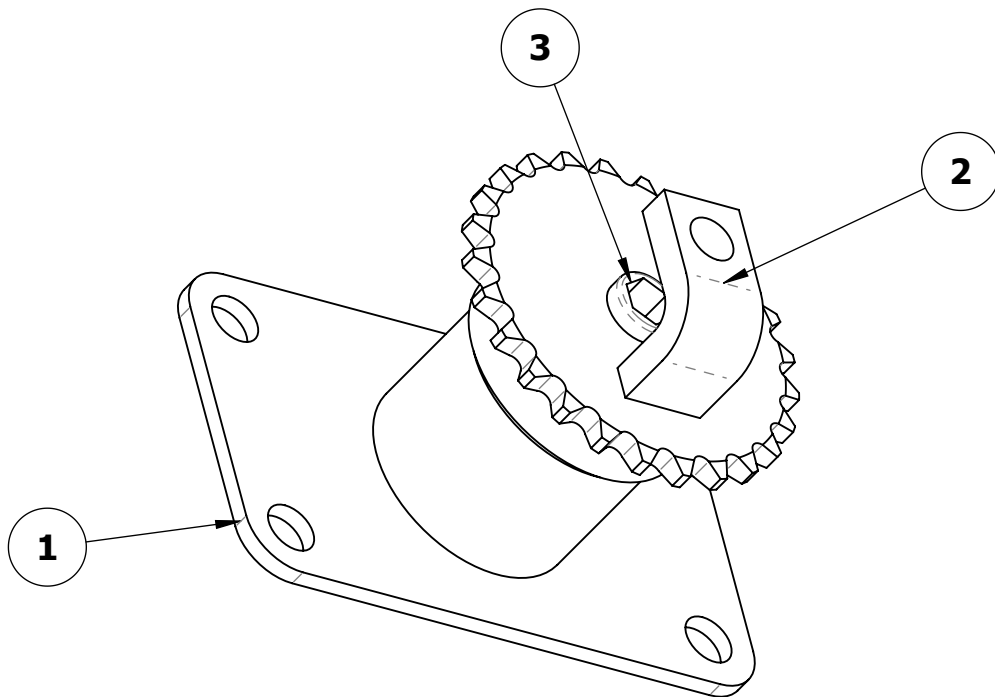


ITEM NO.	PART NUMBER	DESCRIPTION	QTY.
4	2601006	BEARING FLANGED - UCF204	4
5	0120075	DRIVESHAFT	2
6	2402001	SPROCKET - 10T x 20 BORE	2
7	2402020	SPROCKET - 40T x 20 BORE	1
8	2402010	SPROCKET- 21 TEETH x 20 BORE	1
9	2402011	SPROCKET - 24 TEETH x 20 BORE	1
10	2402024	SPROCKET - 40T x 35 BORE	1
11	0120079	BUSH 20 I.D. x 35O.D.	1

Issue:

4

**DRIVE ASSEMBLY
PART No.0120071**



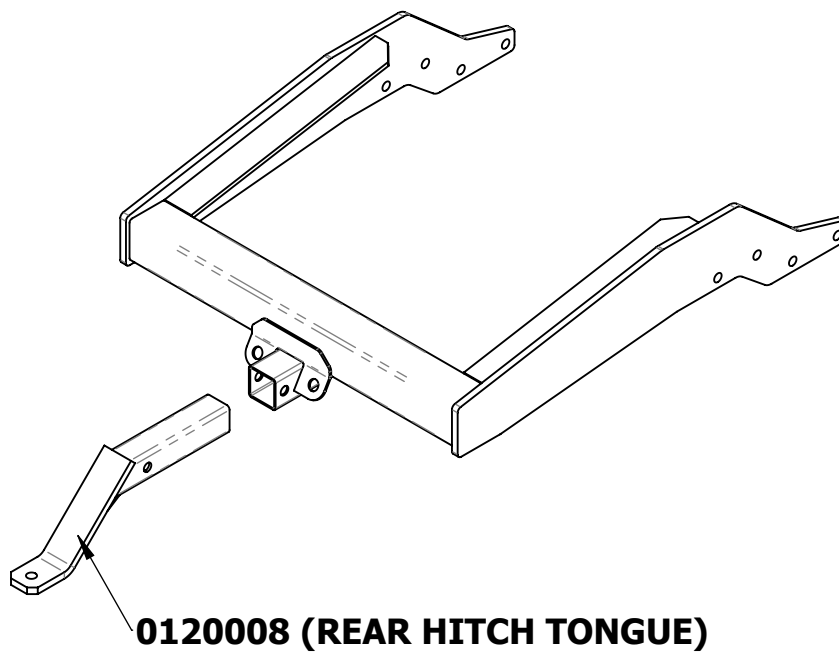
ITEM NO.	PART NUMBER	DESCRIPTION	QTY.
1	0120077	DRIVE ASSY - BODY	1
2	2402025	SPROCKET - 25T x 20 BORE	1
3	0120078	DRIVE SHAFT	1

Issue:

5

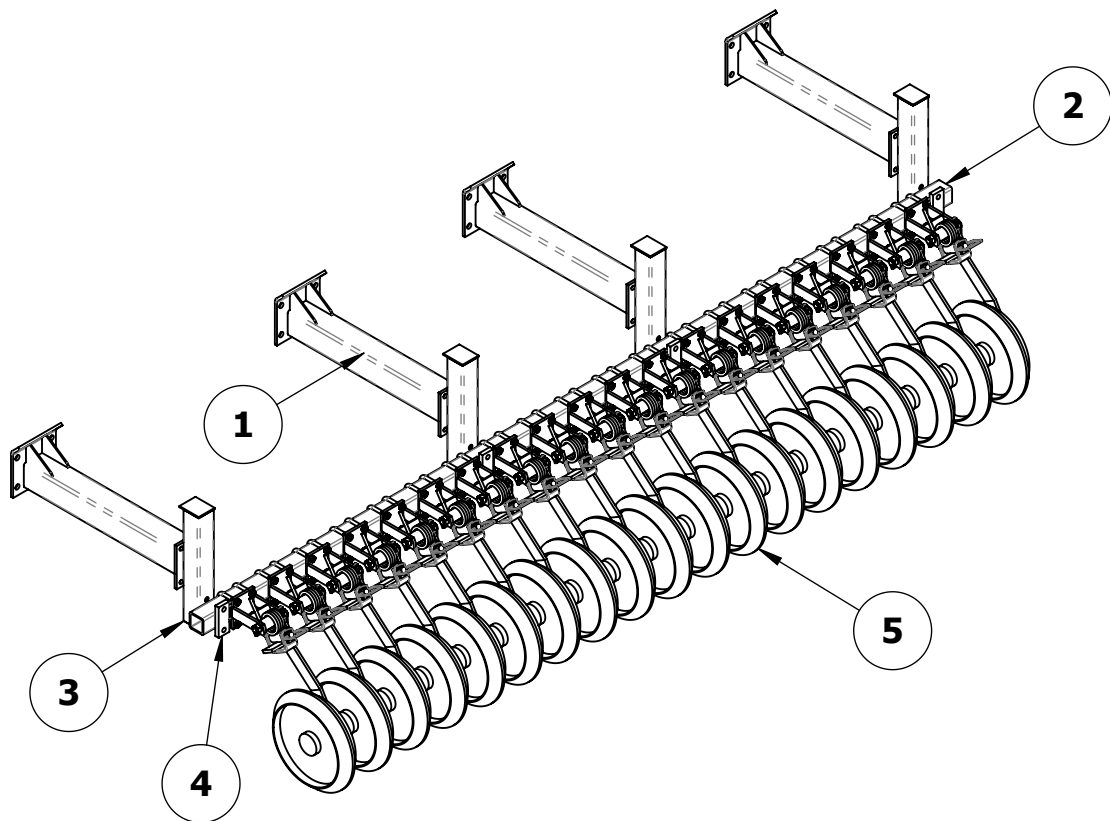
OPTION - TD SEED DRILL

REAR HITCH PART No. 0120010



OPTION - SD SEED DRILL

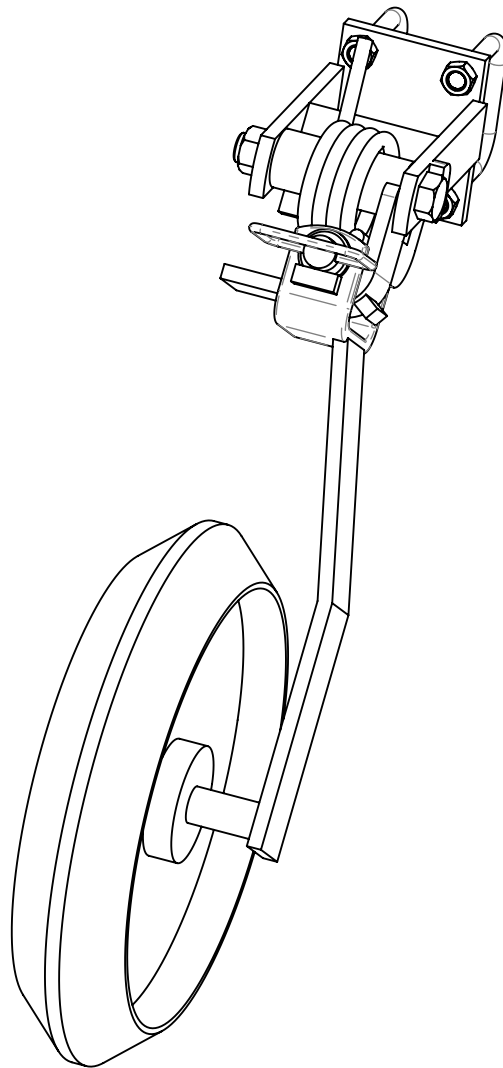
PRESS WHEEL ASSEMBLY



ITEM NO.	PART NUMBER	DESCRIPTION	SHEET	QTY.
1	0111003	PRESSWHEEL SUPPORT BEAM	7	4
2	0111005	PRESSWHEEL CROSS BEAM	7	1
3	0111004	PRESSWHEEL POST	7	4
4	0111006	PRESSWHEEL LOCKING PLATE	7	4
5	01110100	PRESSWHEEL	8	19

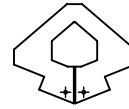
Issue:

**PRESS WHEEL
PART No. 01110100**



**PRESS WHEEL SHOWN WITH
SEMI-PNEUMATIC WEDGE
PROFILE TYRE-WIDTH 80mm**

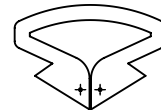
**AVAILABLE TYRE
PROFILES**



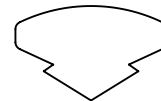
**SEMI-PNEUMATIC WEDGE
PROFILE TYRE WIDTH 80mm**



**SEMI-PNEUMATIC WEDGE
PROFILE TYRE WIDTH 55mm**



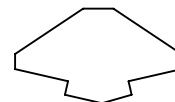
**SEMI-PNEUMATIC FLAT
PROFILE TYRE WIDTH 100mm**



**SOLID FLAT PROFILE
TYRE WIDTH 100mm**



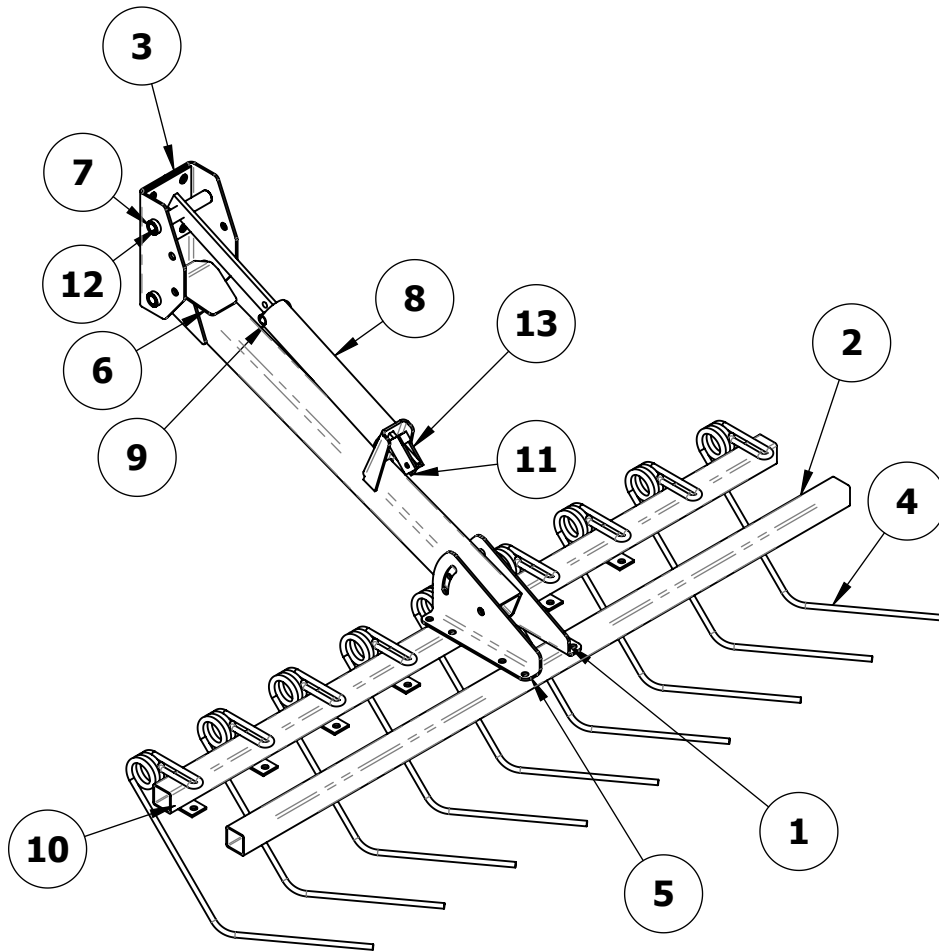
**SOLID WEDGE PROFILE
TYRE WIDTH 55mm**



**SOLID WEDGE/BANKED PROFILE
TYRE WIDTH 80mm**

OPTION - TD SEED DRILL

HARROW



ITEM NO.	PART NUMBER	DESCRIPTION	QTY.
1	0702002-01	BOTTOM PIVOT PLATE -RH	1
2	0703001-01	50 x 5 SHS	2
3	0702003	TOP PIVOT ASSEMBLYS	1
4	0704001	HARROW TYNE	9
5	0702002-01-LH	BOTTOM PIVOT PLATE-LH	1
6	0702001	MAIN ARM	1
7	0702004	PIN	2
8	0702006-19098A	SPRING 56 OD, 6.4mm, 400 LONG	1
9	0702007	SPACER	2
10	0702008	HARROW-BOLT PLATE	9
11	07002005	SPRING ARM	1
12	0702003-02	BUSH-20.2 BORE	2
13	07002009	PIN UP BRACKET	1