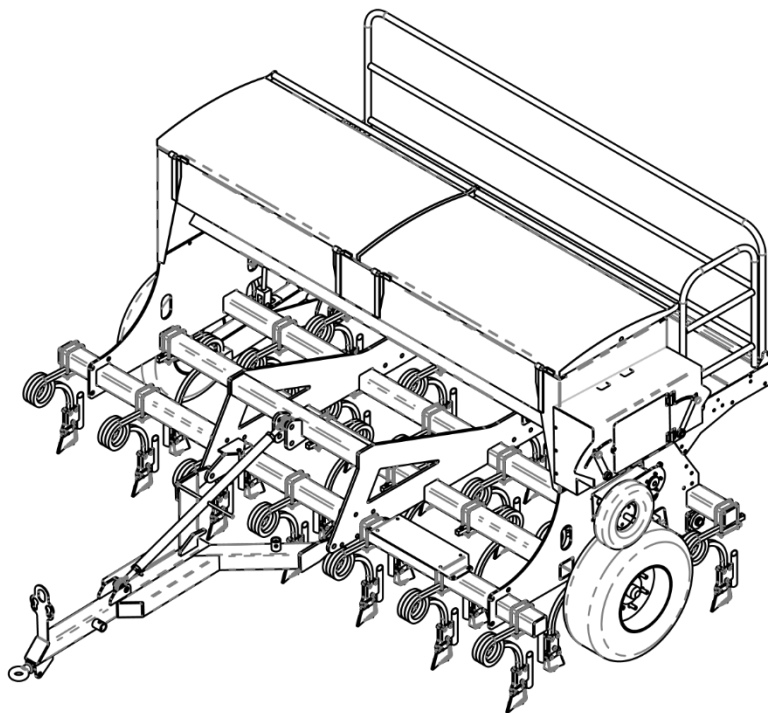
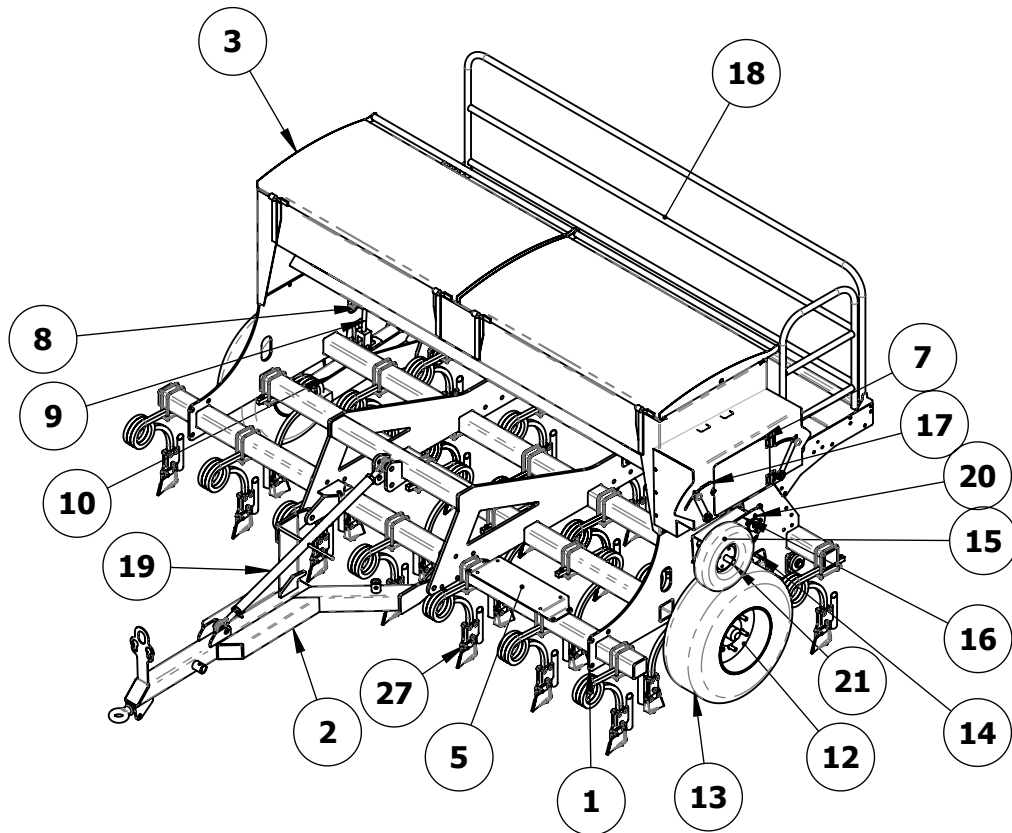


# DAVIMAC 'DF' SEED DRILL PARTS LIST



**FROM: DF 0110 TO DF 1014**

## DAVIMAC 'DF' BASIC CONFIGURATION



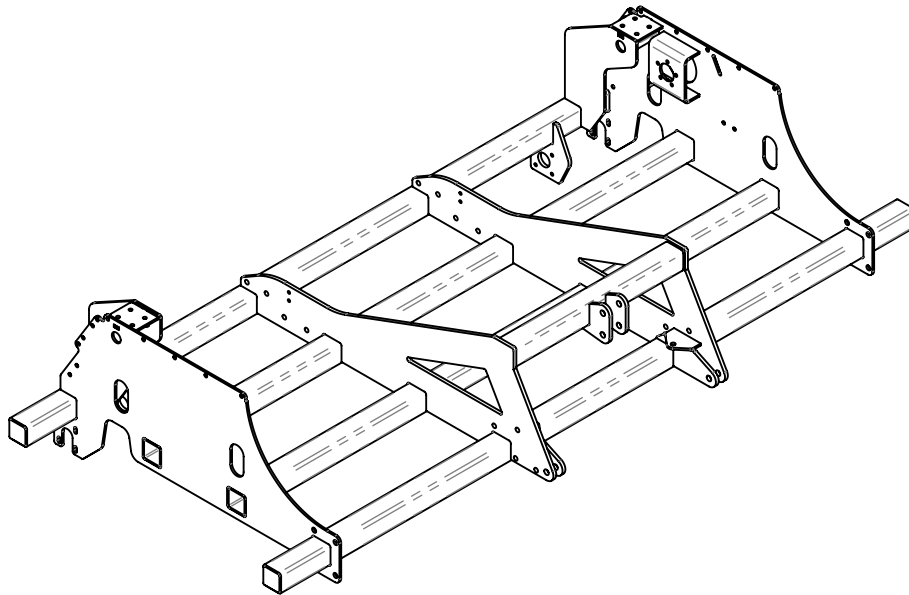
**NOTE: 3 1/4" DIA HYDRAULIC CYLINDER USED ON THE LEFT SIDE  
3" DIA HYDRAULIC CYLINDER USED ON THE RIGHT SIDE.**

ITEM NO.	PART NUMBER	DESCRIPTION	SHEET	3000-24/QTY.
1	0102002	FRAME - ASSEMBLY	2	1
2	0103003	DF HITCH	3	1
3	0105009	SEED BOX	5	1
5	0120002	TOOL BOX BRACKET	1	1
7	0107002	GEAR BOX GUARD	6	1
8	2101002-B	3 1/4" HYDRAULIC CYLINDER	1	2
9	2101002-R	3 1/4" HYDRAULIC CYLINDER PISTON	1	2
10	0104003	DF_AXLE LH	7	1
12	2201001	WHEEL HUB	1	2
13	2202001	TYRE - SIZE 10/75 - 15.3	1	2
14	0104004	DF- AXLE RH	7	1
15	2202002	375 DIA x 100 TYRE	1	1
16	0107009	DF - DRIVE ARM	8	1
17	Drive Kit	DRIVE KIT	9	1
18	PLATFORM	DF_PLATFORM	12	1
19	HITCH LEVEL BAR	HITCH LEVELLING BAR	4	1
20	0107006	DRIVE GEAR CLUSTER	10	1
21	0107014	SMALL WHEEL AXLE	11	1
27		TYNE OPTIONS	13	28

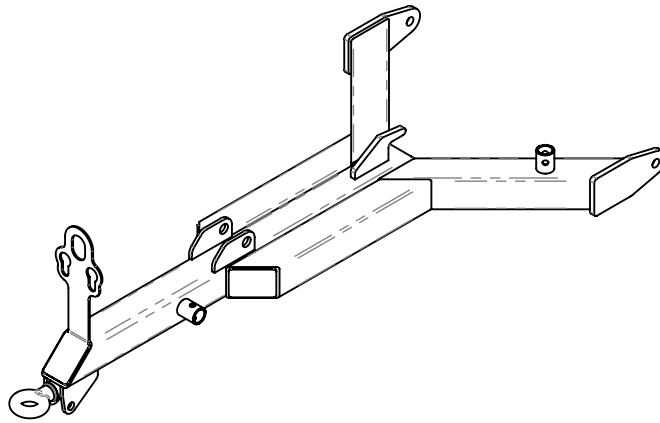
Issue:

1

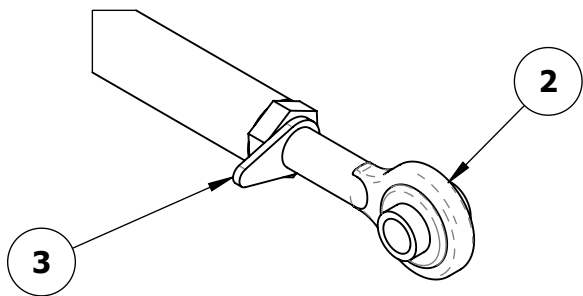
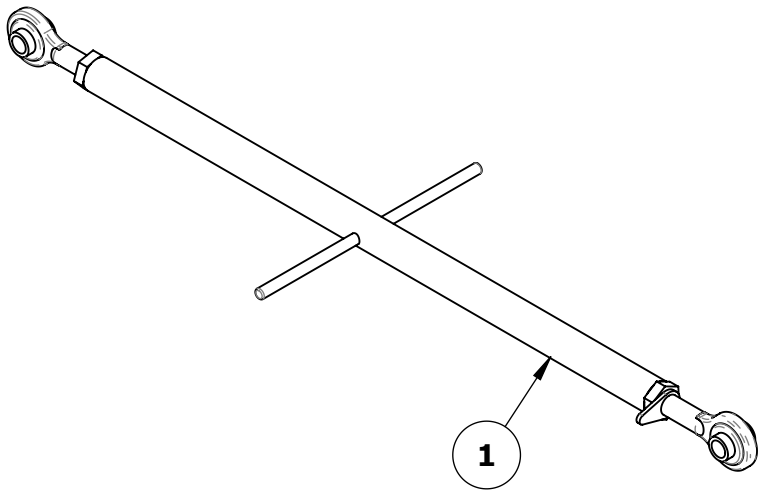
**'DF' - FRAME**  
**PART No. 0102002**



**'DF' - HITCH**  
**PART No. 0103003**



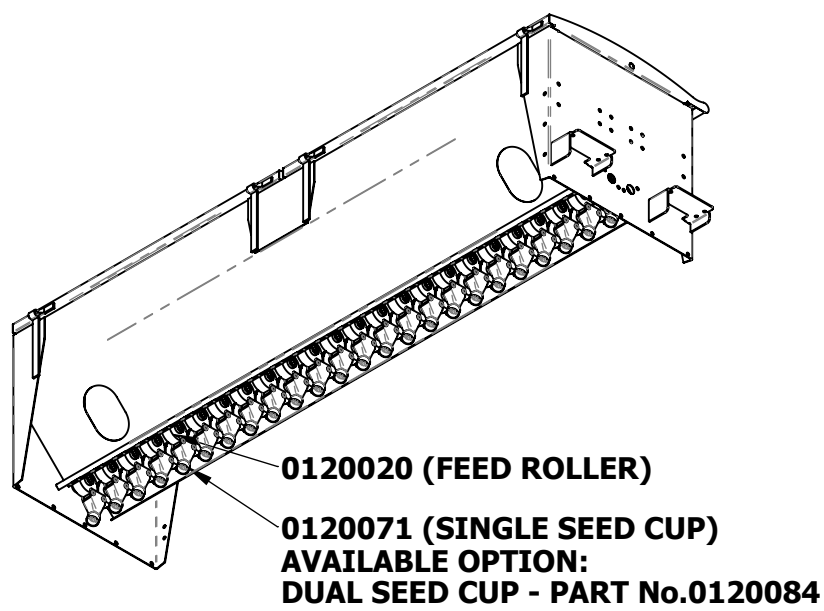
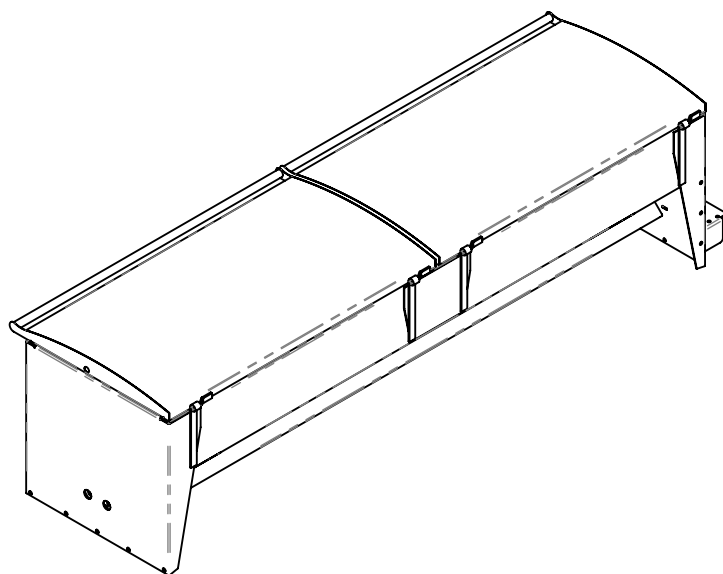
# HITCH LEVELLING BAR



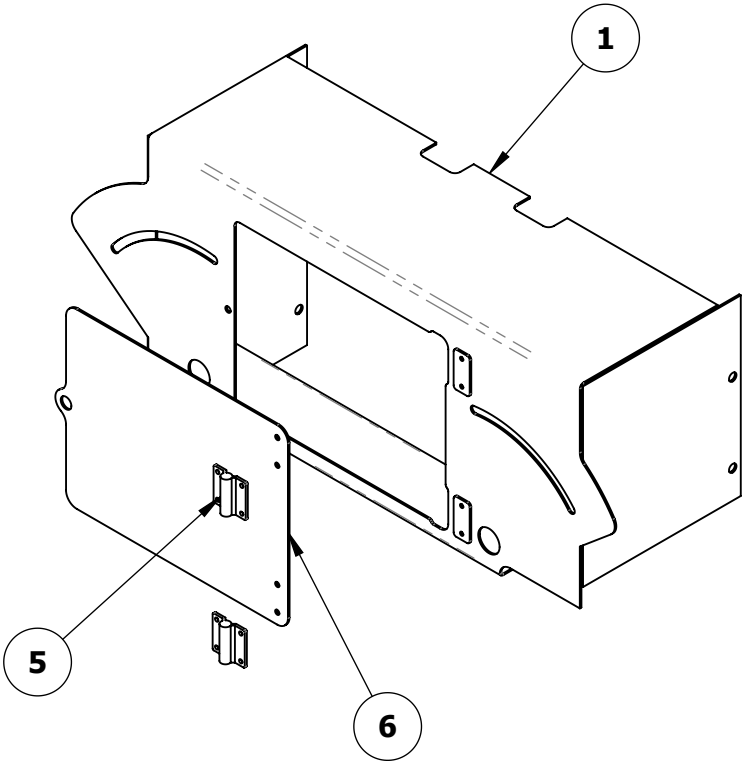
ITEM NO.	PART NUMBER	DESCRIPTION	QTY.
1	0120072	HITCH LEVELLING BAR-BODY	1
2	0120073	ROD END	2
3	0120074	LOCK WASHER	1

Issue:

**SEED BOX  
PART No.0105009**

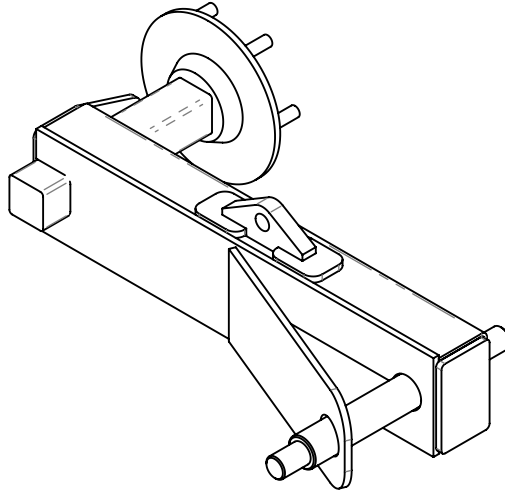


**GEAR BOX GUARD**  
**PART No. 0107002**

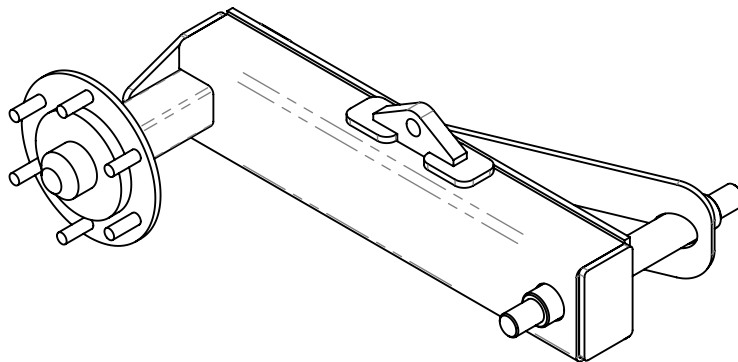


ITEM NO.	PART NUMBER	DESCRIPTION	QTY.
1	0107002-01	MAIN BODY	1
5	2501001	HINGE – BUTT	2
6	0107003	GEAR BOX GUARD DOOR	1

**AXLE L.H.  
PART No. 0104003**

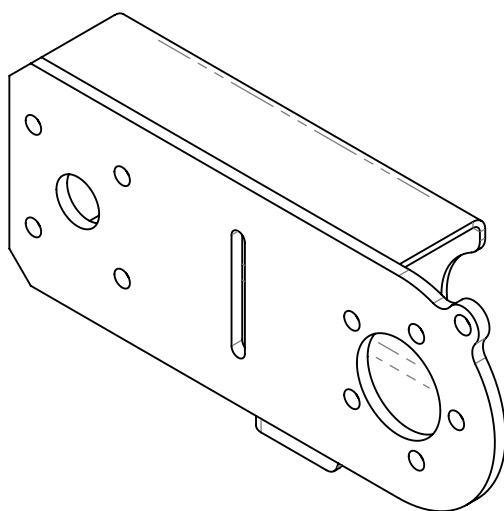


**AXLE R.H.  
PART No. 0104004**

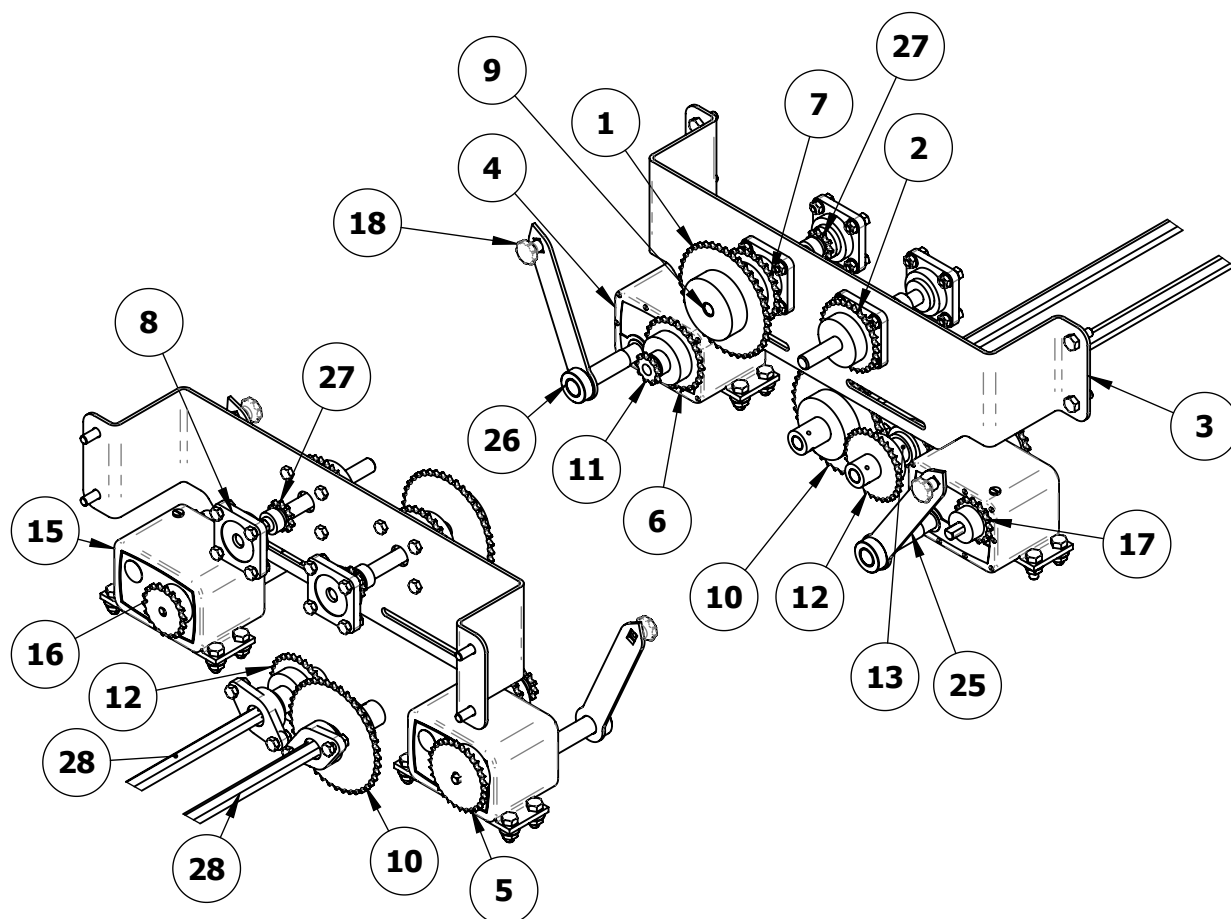




**DRIVE ARM**  
**PART No. 0107009**



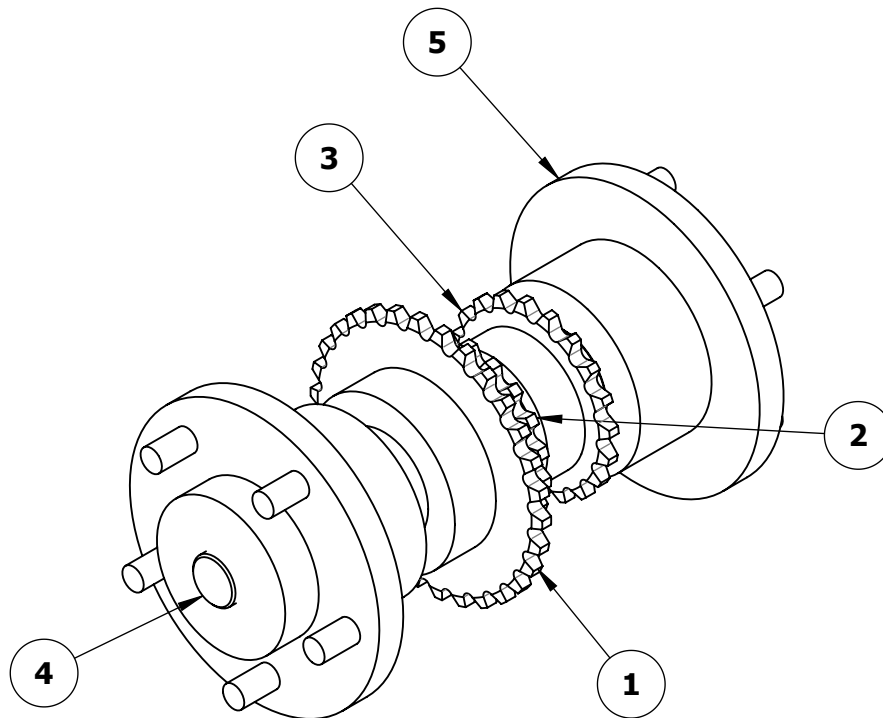
## DRIVE KIT



ITEM NO.	PART NUMBER	DESCRIPTION	QTY.
1	2402020	SPROCKET - 40T x 20 BORE	1
2	2402015	SPROCKET - 30T x 20 BORE	1
3	0107001	DRIVE SHAFT SUPPORT	1
4	2410002	ZERO MAX - Y1	1
5	2402014	SPROCKET - 30T x 1/2 BORE	1
6	2402013	SPROCKET - 25T x 5/8 BORE	1
7	2402012	SPROCKET - 25T x 20 BORE	1
8	2601006	BEARING FLANGED - UCF204	4
9	0107011	BOX IDLER SHAFT	2
10	2402021	SPROCKET - 40T x 35 BORE	1
11	2402002	SPROCKET - 10T x 5/8 BORE	1
12	2402017	SPROCKET - 30T x 35 BORE	1
13	0107010	CLUTCH BUSH	2
14	2601007	BEARING FLANGED - UCFL204	2
15	2410003	ZERO MAX - Y2	1
16	2402006	SPROCKET - 18T x 1/2 BORE	1
17	2402004	SPROCKET - 15T x 5/8 BORE	1
18	2507001	KNOB - BLACK SCREW	2
25	0107013	GEAR LEVER	2
26	0107013-01	GEAR LEVER ARM	2
27	2402022	SPROCKET - 10T x 5/8 BORE	2
28	0107015	BOX SHAFT HEX	2

Issue:

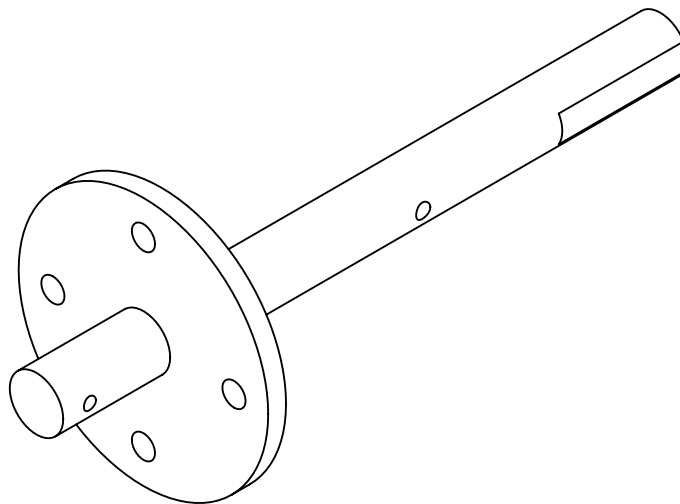
## DRIVE GEAR CLUSTER PART No. 0107006



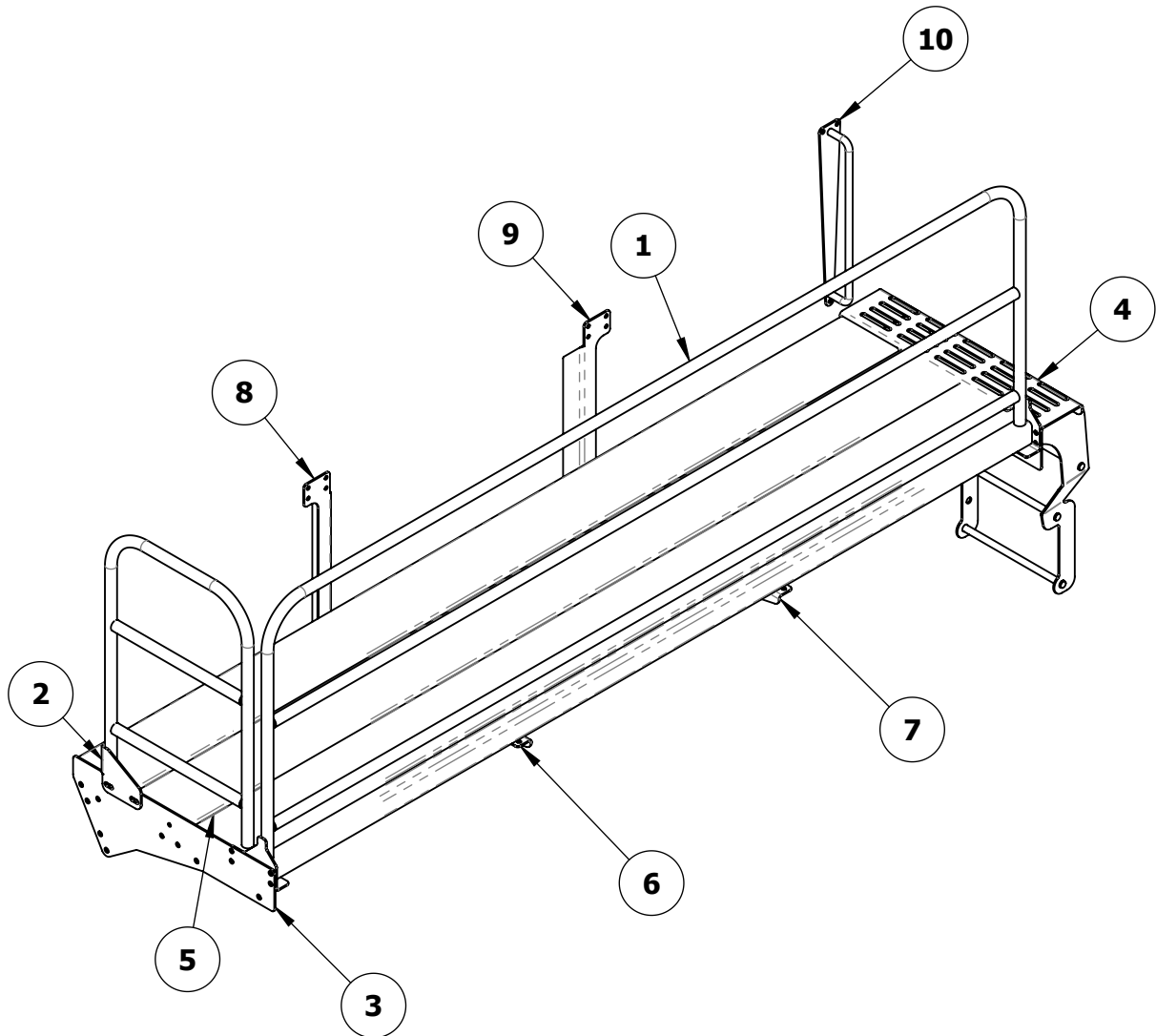
ITEM NO.	PART NUMBER	DESCRIPTION	QTY.
1	2402018	SPROCKET-30T x 50 BORE	1
2	2402009	SPROCKET-20T x 50 BORE x 13 BOSS	1
3	2402008	SPROCKET- 20T x 50 BORE x 21 BOSS	1
4	0107006	DRIVE SHAFT-PIVOT	1
5	2203002	PIVOT HUB	2

Issue:

**SMALL WHEEL AXLE  
PART No. 0107014**



## PLATFORM

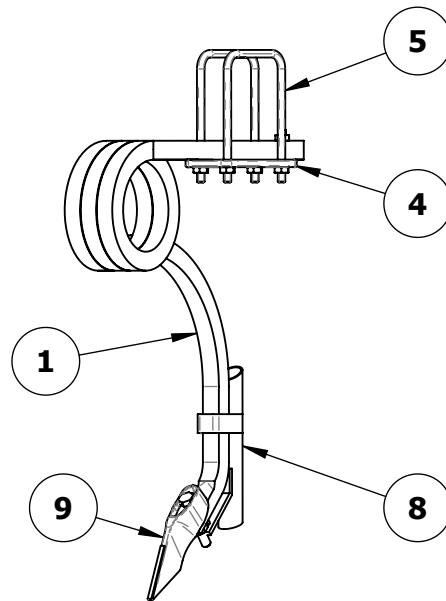


ITEM NO.	PART NUMBER	DESCRIPTION	QTY.
1	0106009	HANDRAIL MAIN - DF DRILL	1
2	0106014	HANDRAIL LH - TD DRILL	1
3	0106008	STEP SUPPORT -LH DF DRILL	1
4	0106007	STEPS - DF DRILL	1
5	0106010	PLATFORM DECK	3
6	0106013-LH	PLATFORM CENTRE SUPPORT- LH	1
7	0106013-RH	PLATFORM CENTRE SUPPORT- RH	1
8	0106012	PLATFORM END SUPPORT- LH	1
9	0106012-RH	PLATFORM END SUPPORT - RH	1
10	0106015	HAND RAIL- RH	1

Issue:

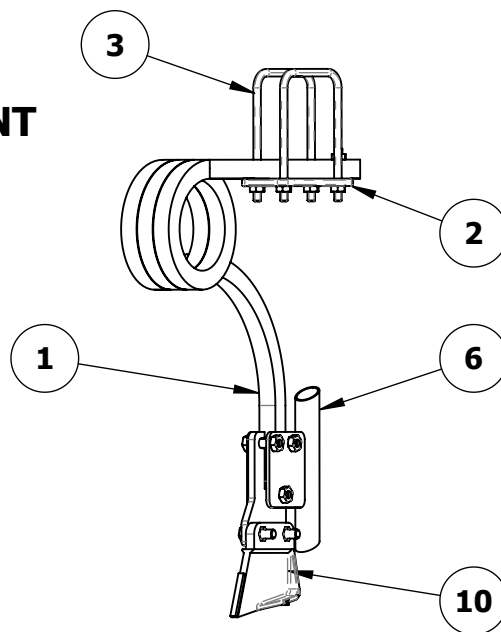
## TYNE OPTIONS

### COIL TYNE SINGLE BOLT



ITEM NO.	PART NUMBER	DESCRIPTION	QTY.
1	0120064	SINGLE BOLT SHANK	1
4	0120065	LOCKING PLATE	1
5	0120066	100 x100 U-BOLT	2
8	0120086	SHOOT BOOT	1
9	0120082	SINGLE BOLT POINT	1

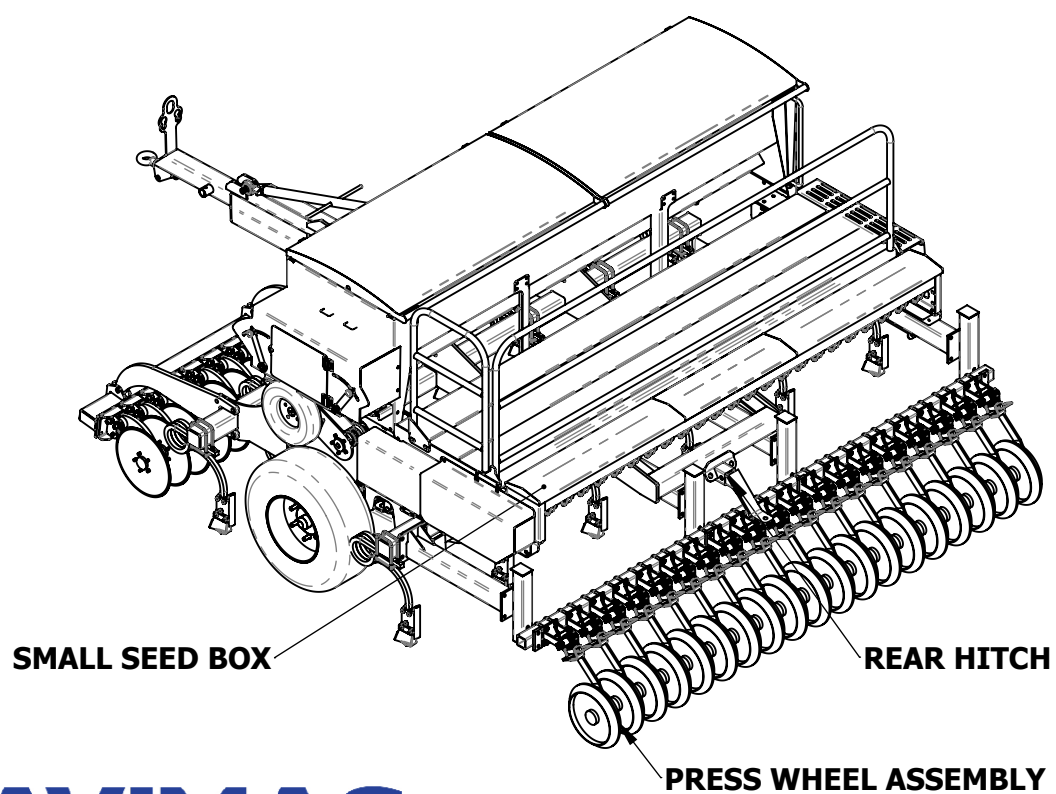
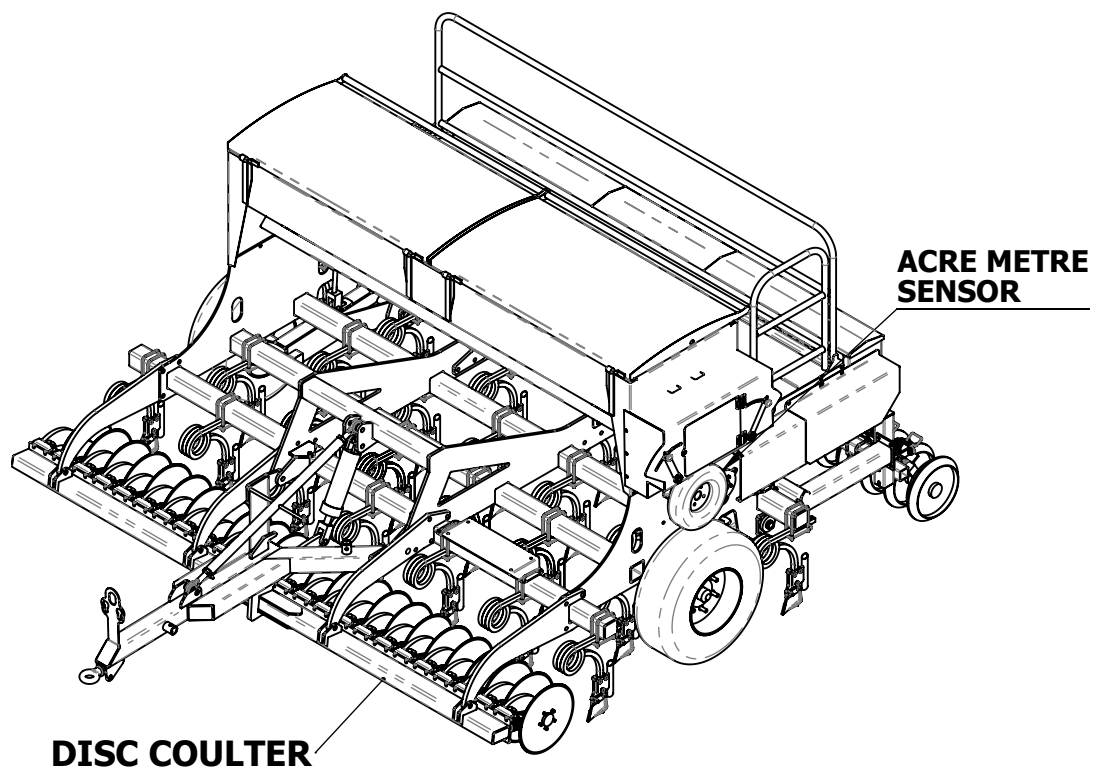
### COIL TYNE ADAPTOR POINT



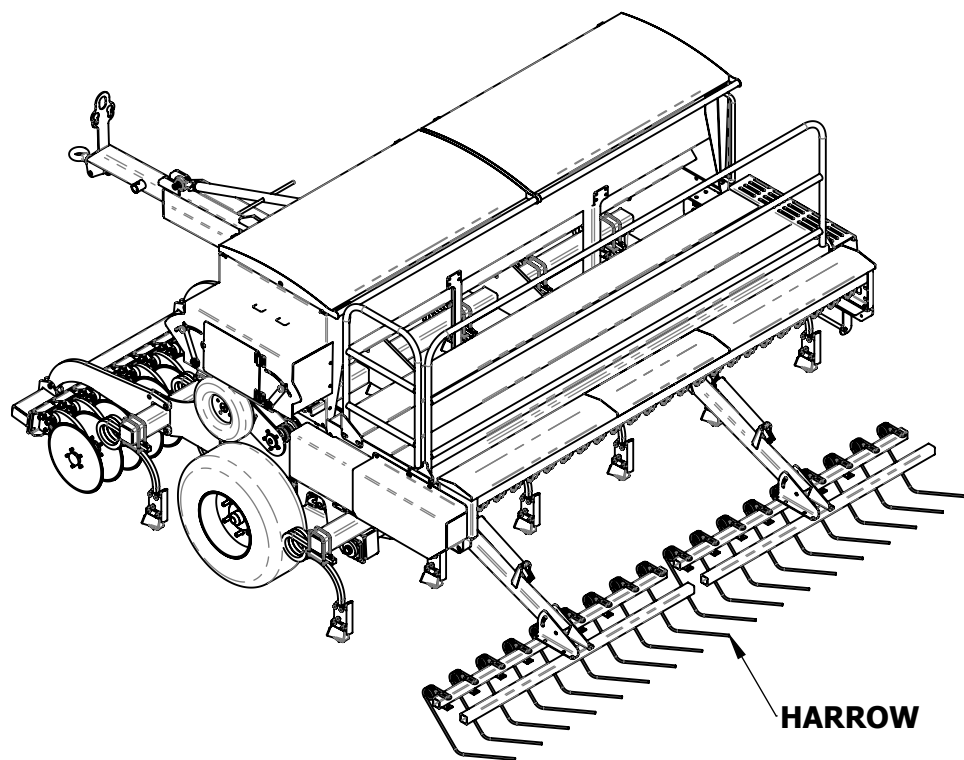
ITEM NO.	PART NUMBER	DESCRIPTION	QTY.
1	0120087	SHANK	1
2	0120065	LOCKING PLATE	1
3	0120066	100 x100 U-BOLT	2
6	0120006	POINT ADAPTOR & SINGLE SHOOT BOOT	1
10	0120088	POINT	1

Issue:

## 'DF' SEED DRILL OPTIONS

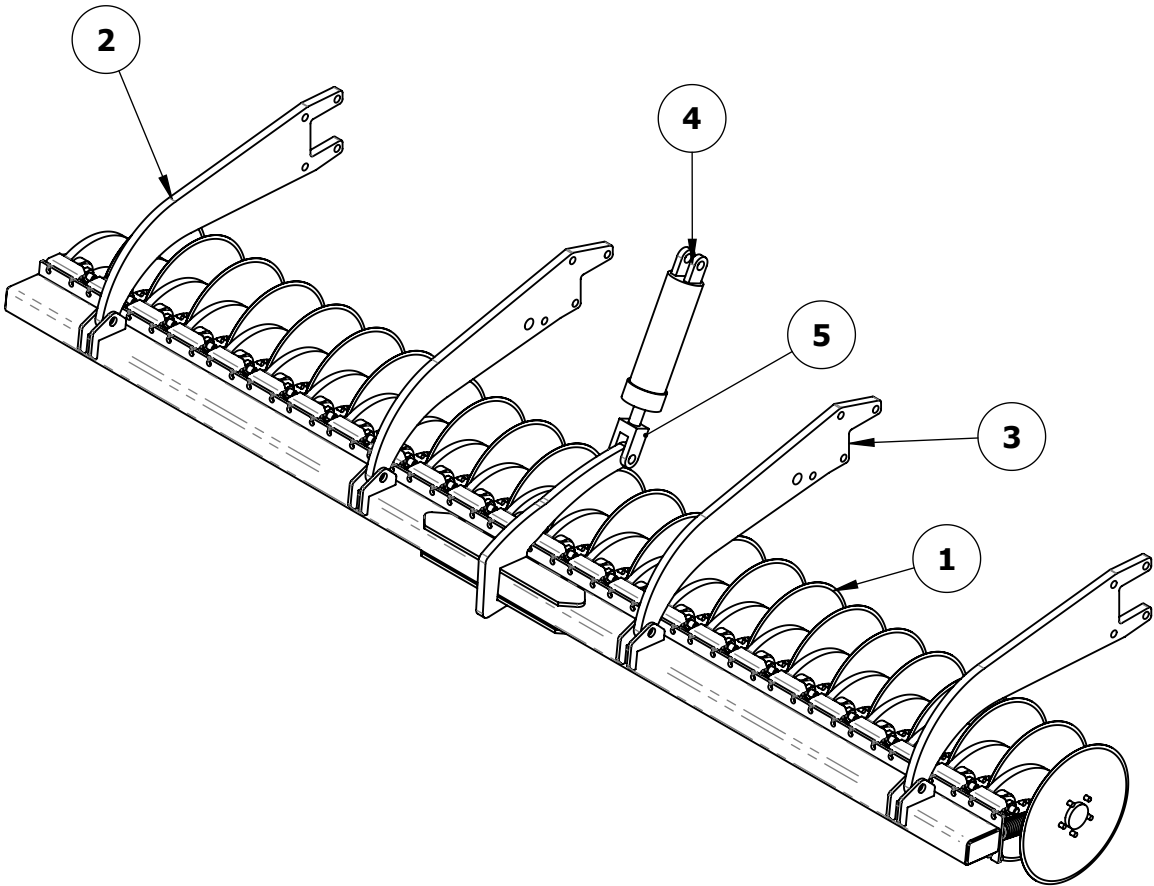


## 'DF' SEED DRILL OPTIONS





# DISC COULTER ASSEMBLY (COMPLETE)

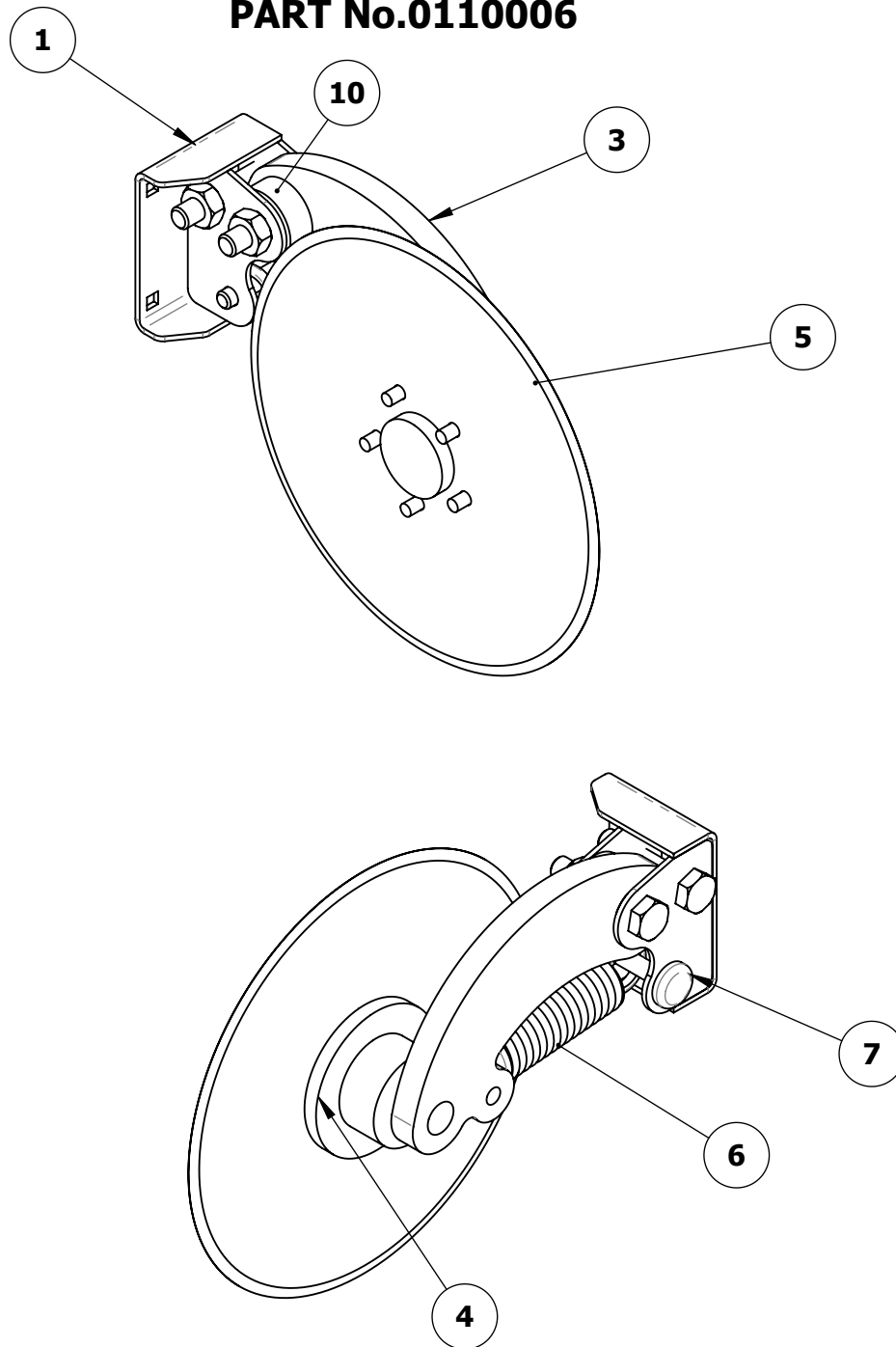


ITEM NO.	PART NUMBER	DESCRIPTION	SHEET	QTY.
1	0110006	DISC COULTER UNIT	2	1
2	0110004	DISC COULTER ARM - OUTSIDE	1	2
3	0110005	DISC COULTER ARM - INSIDE	1	2
4	2101006-B	HYDRAULIC CYLINDER BODY	1	1
5	2101006-R	HYDRAULIC CYLINDER PISTONROD	1	1

Issue:

1

## DISC ASSEMBLY PART No.0110006

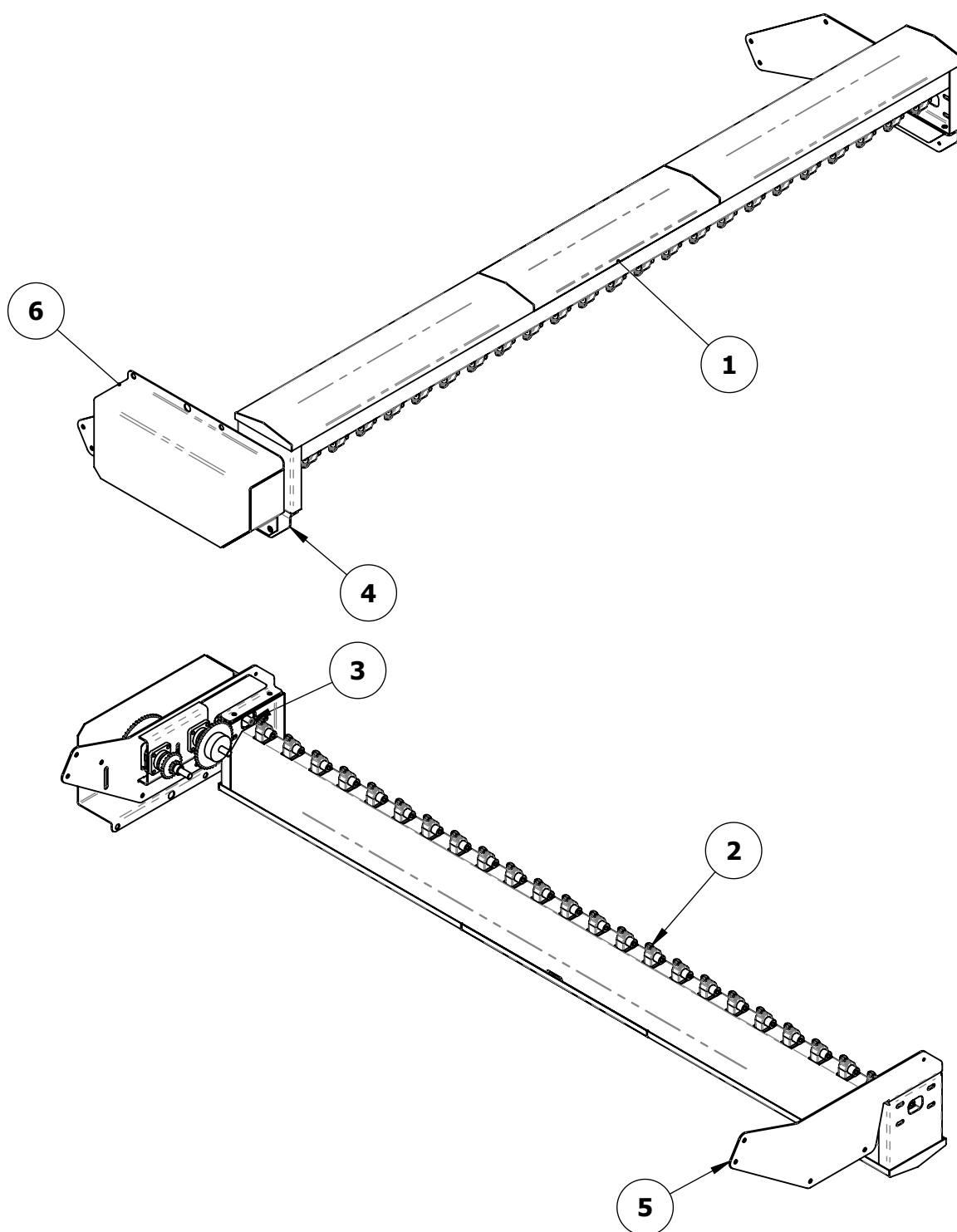


ITEM NO.	PART NUMBER	DESCRIPTION	QTY.
1	0110006-05	BASE PLATE	1
3	0110006-04	DISC - ARM	1
4	2203002	PIVOT HUB	1
5	disc 16inch	DISC-16" DIA	1
6	0110007	DISC-TENSION SPRING	1
7	pin	PIN	1
10	GE30ET-2RS	30 DIA BORE BUSH	1

Issue:

2

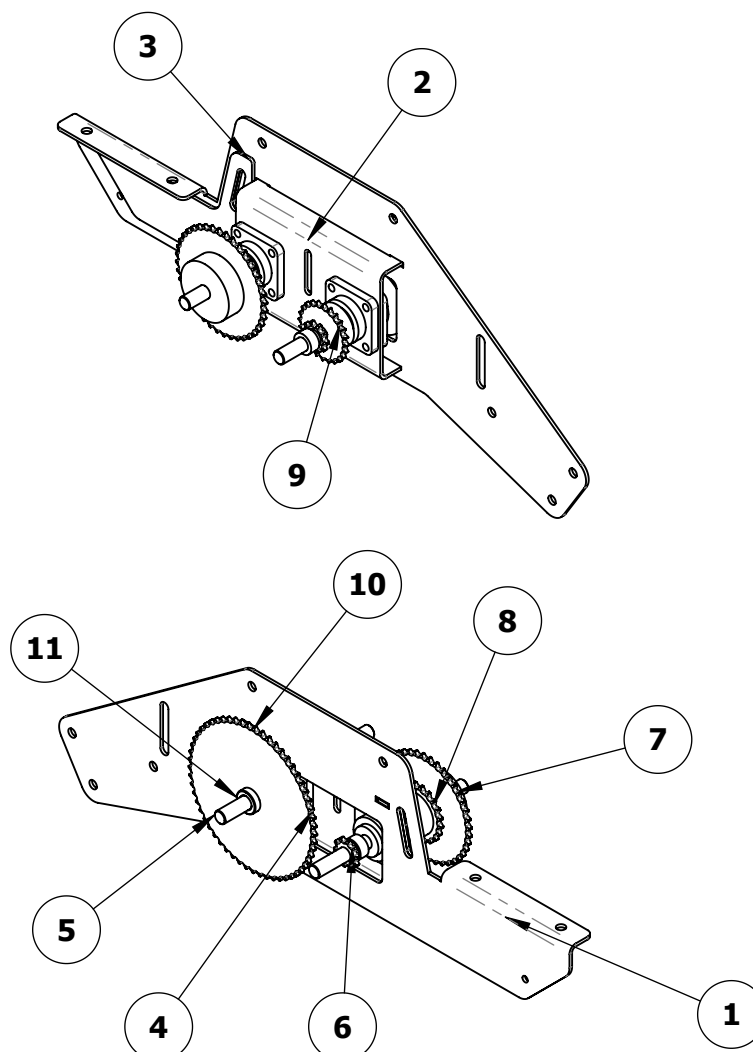
## SMALL SEED BOX



ITEM NO.	PART NUMBER	DESCRIPTION	SHEET	QTY.
1	08_STANDARD BOX 3000	STANDARD SEED BOX - DF	3	1
2	0120076	FEEDER	3	24
3	0120071	DRIVE ASSY	5	1
4	0108002	SMALL SEED BOX LH MOUNT WITH GEARBOX	4	1
5	0108001	SMALL SEED BOX RH MOUNT	3	1
6	0108003	SMALL SEED BOX GUARD	3	1

Issue:

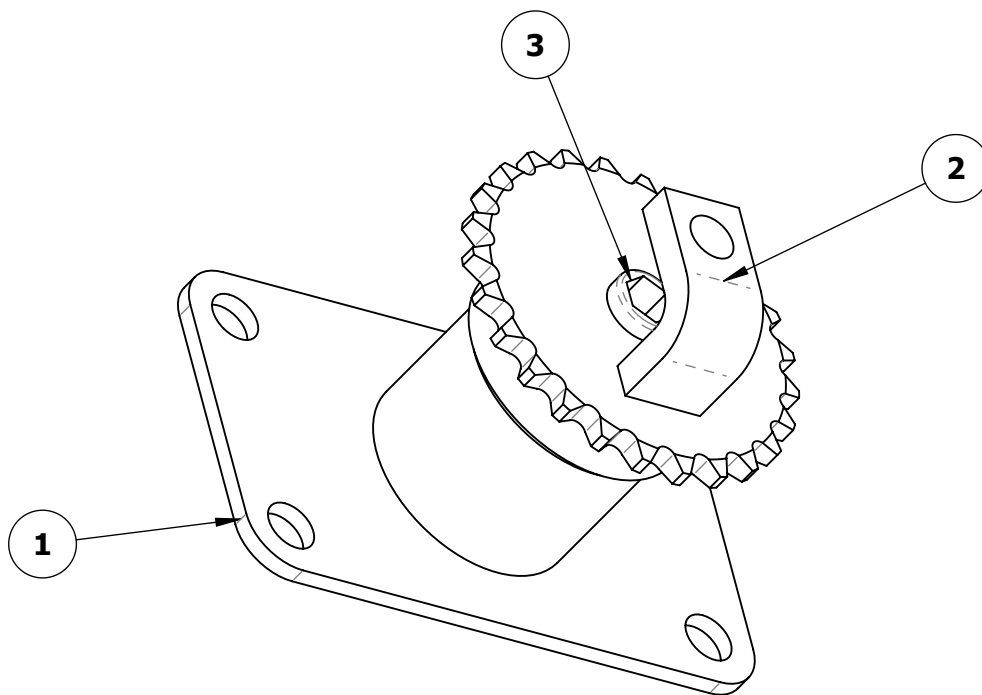
## SMALL SEED BOX LH MOUNT WITH GEARBOX PART No. 0108002



ITEM NO.	PART NUMBER	DESCRIPTION	QTY.
4	2601006	BEARING FLANGED - UCF204	4
5	0120075	DRIVESHAFT	2
6	2402001	SPROCKET - 10T x 20 BORE	2
7	2402020	SPROCKET - 40T x 20 BORE	1
8	2402010	SPROCKET- 21 TEETH x 20 BORE	1
9	2402011	SPROCKET - 24 TEETH x 20 BORE	1
10	2402024	SPROCKET - 40T x 35 BORE	1
11	0120079	BUSH 20 I.D. x 35O.D.	1

Issue:

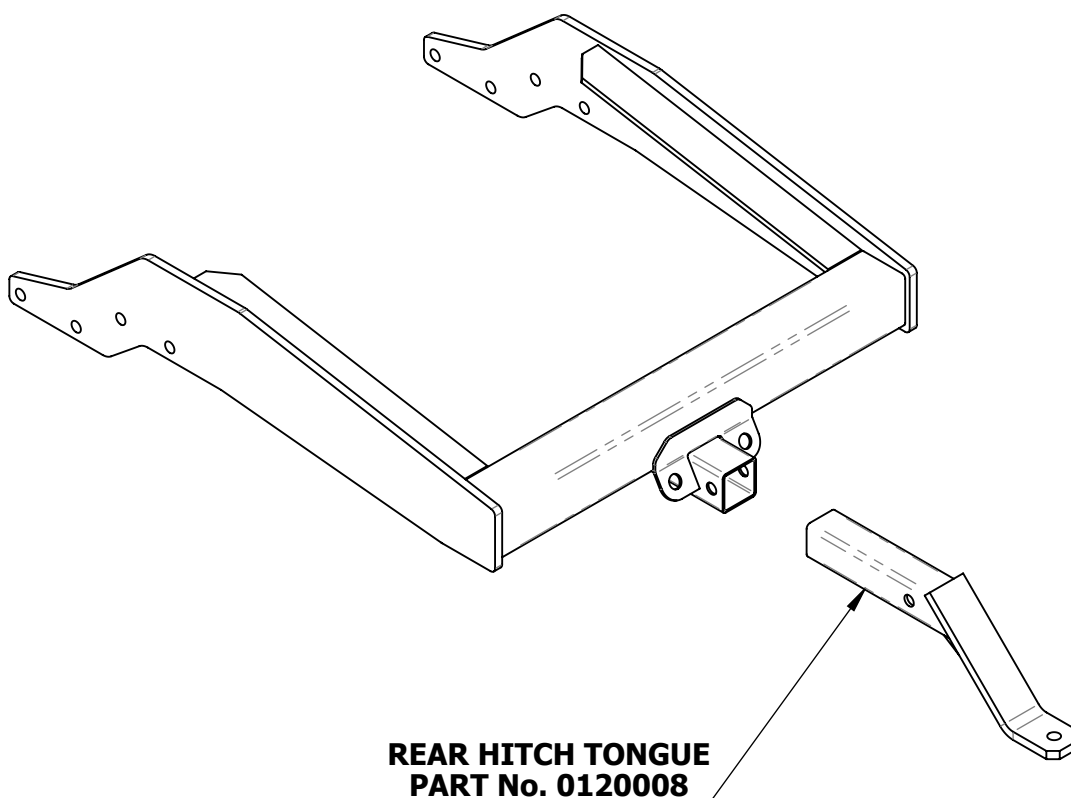
**DRIVE ASSEMBLY  
PART No.0120071**



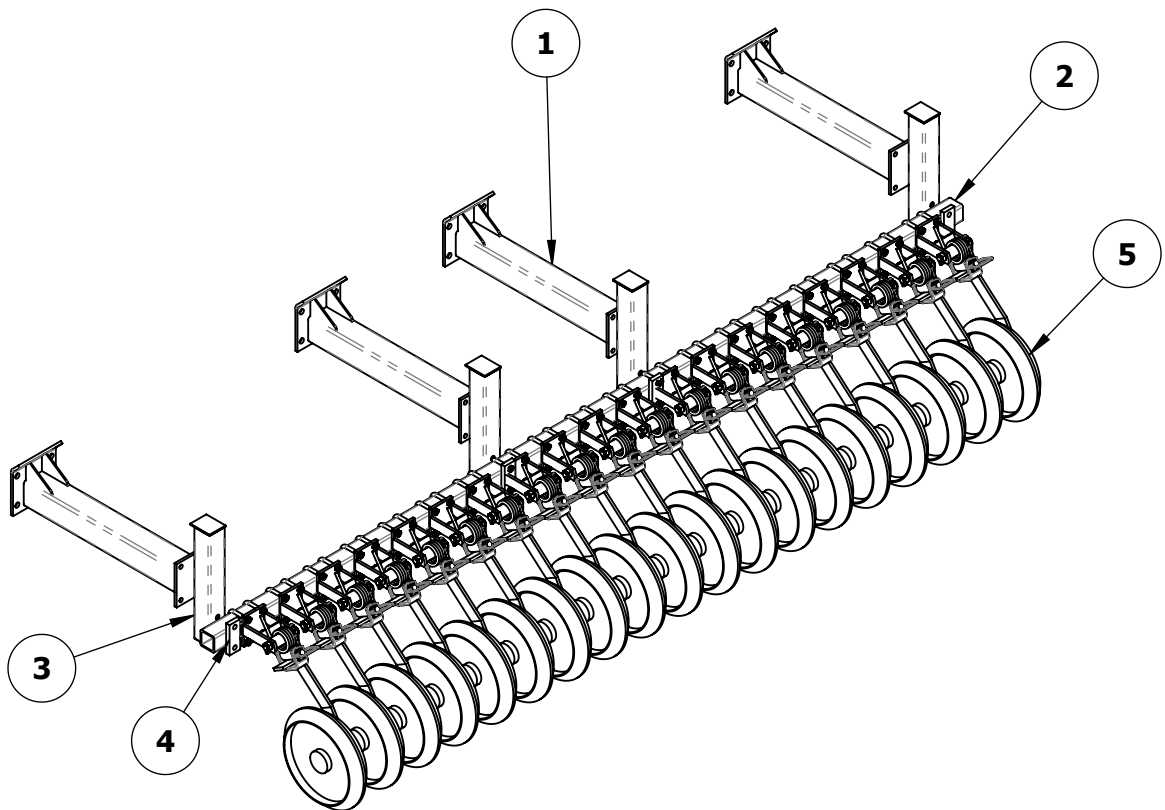
ITEM NO.	PART NUMBER	DESCRIPTION	QTY.
1	0120077	DRIVE ASSY - BODY	1
2	2402025	SPROCKET - 25T x 20 BORE	1
3	0120078	DRIVE SHAFT	1

**Issue:**

**REAR HITCH  
PART No. 0120007**



## PRESS WHEEL ASSEMBLY - DF

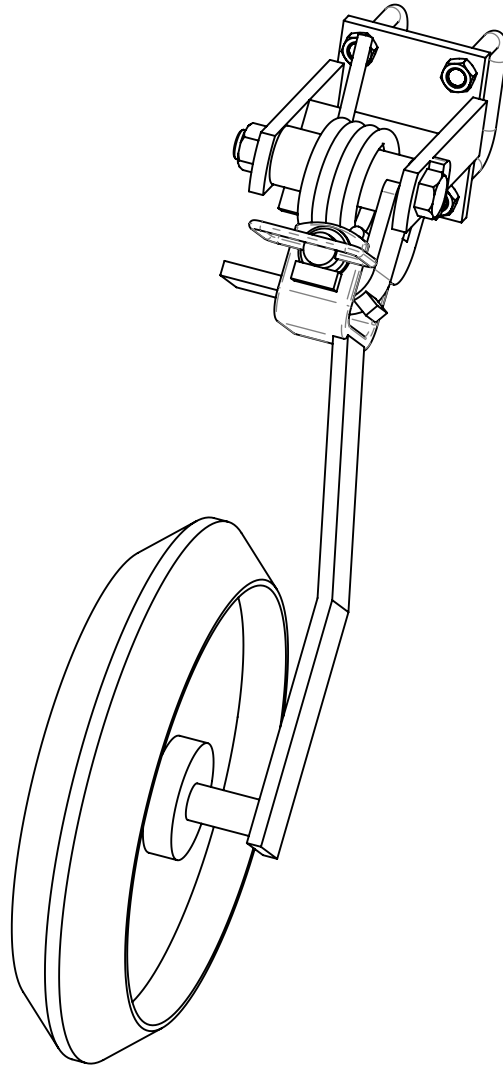


ITEM NO.	PART NUMBER	DESCRIPTION	SHEET	QTY.
1	0111003	PRESSWHEEL SUPPORT BEAM	7	4
2	0111005	PRESSWHEEL CROSS BEAM	7	1
3	0111004	PRESSWHEEL POST	7	4
4	0111006	PRESSWHEEL LOCKING PLATE	7	4
5	01110100	PRESSWHEEL	8	19

Issue:

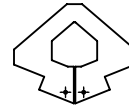
7

# **PRESS WHEEL PART No. 01110100**



**PRESS WHEEL SHOWN WITH  
SEMI-PNEUMATIC WEDGE  
PROFILE TYRE-WIDTH 80mm**

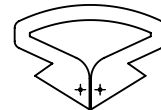
## **AVAILABLE TYRE PROFILES**



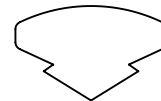
**SEMI-PNEUMATIC WEDGE  
PROFILE TYRE WIDTH 80mm**



**SEMI-PNEUMATIC WEDGE  
PROFILE TYRE WIDTH 55mm**



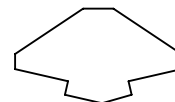
**SEMI-PNEUMATIC FLAT  
PROFILE TYRE WIDTH 100mm**



**SOLID FLAT PROFILE  
TYRE WIDTH 100mm**



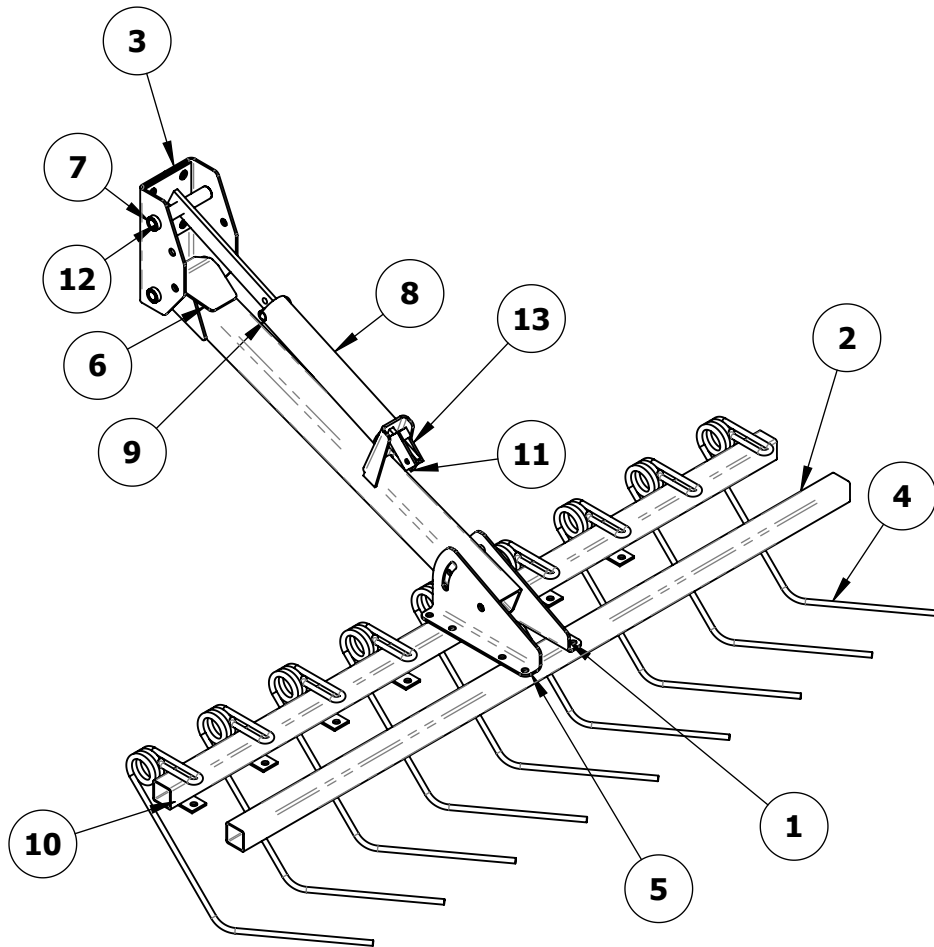
**SOLID WEDGE PROFILE  
TYRE WIDTH 55mm**



**SOLID WEDGE/BANKED PROFILE  
TYRE WIDTH 80mm**



# HARROW



ITEM NO.	PART NUMBER	DESCRIPTION	QTY.
1	0702002-01	BOTTOM PIVOT PLATE -RH	1
2	0703001-01	50 x 5 SHS	2
3	0702003	TOP PIVOT ASSEMBLYS	1
4	0704001	HARROW TYNE	9
5	0702002-01-LH	BOTTOM PIVOT PLATE-LH	1
6	0702001	MAIN ARM	1
7	0702004	PIN	2
8	0702006-19098A	SPRING 56 OD,6.4mm, 400 LONG	1
9	0702007	SPACER	2
10	0702008	HARROW-BOLT PLATE	9
11	07002005	SPRING ARM	1
12	0702003-02	BUSH-20.2 BORE	2
13	07002009	PIN UP BRACKET	1

Issue: